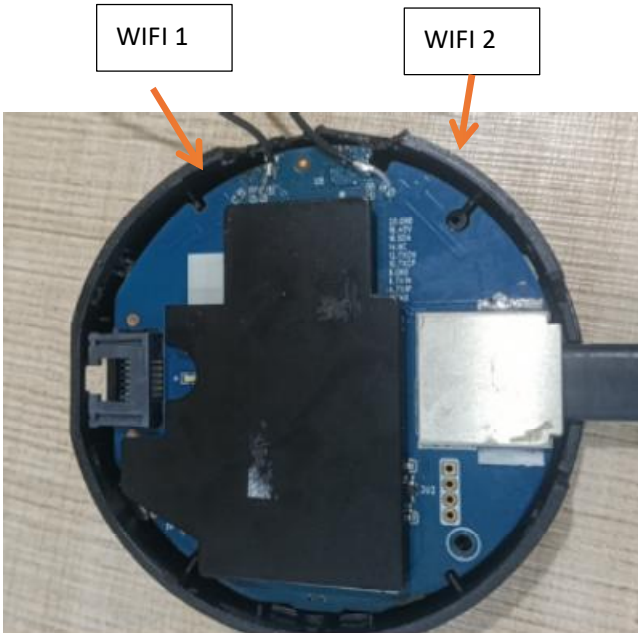
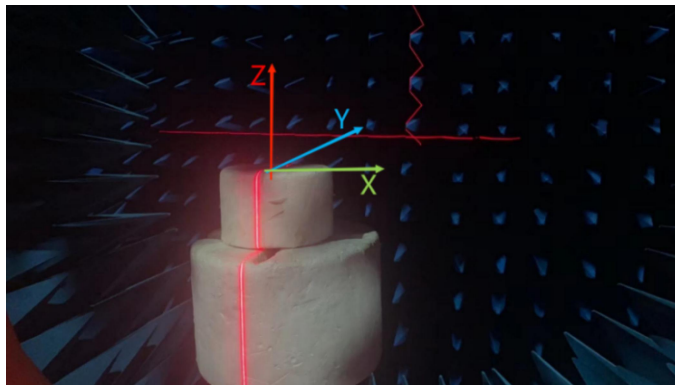


# 天线测试数据报告

## 一、整机和天线装配图

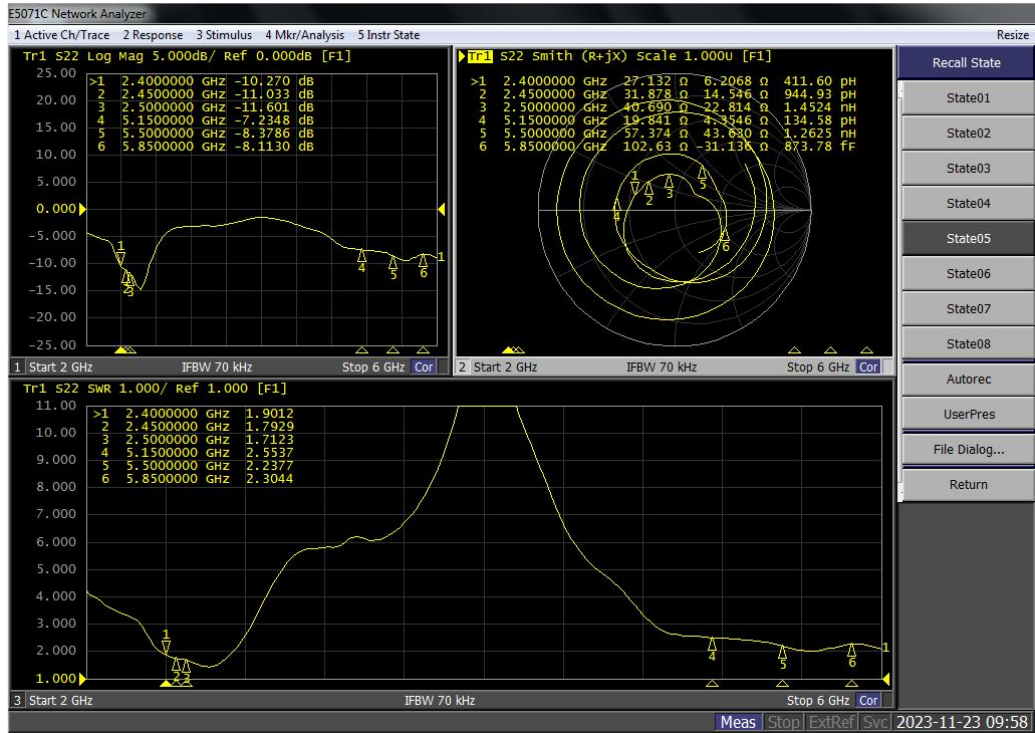


## 测试环境

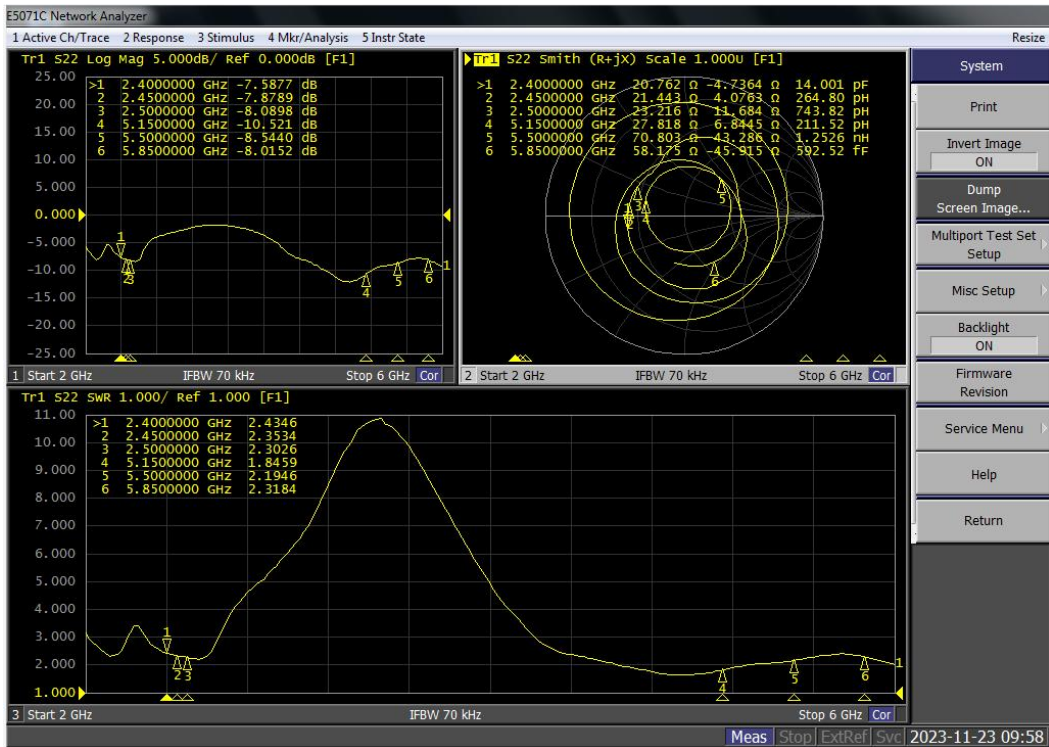


## 二、天线驻波图

#1



#2



二、无源效率

Gain&Efficiency 增益、效率		
frequency 频率(MHz)	gain 增益(dBi)	efficiency 效率(%)
2400	2.03	54.67
2410	2.13	56.48
2420	2.12	55.05
2430	2.26	55.38
2440	2.28	55.79
2450	2.33	56.9
2460	2.39	57.1
2470	2.34	57.72
2480	2.09	56.98
2490	1.92	56.78
2500	1.52	56.8

Gain&Efficiency 增益、效率		
frequency 频率(MHz)	gain 增益(dBi)	efficiency 效率(%)
5150	-1.67	41.79
5200	-1.55	43.7
5250	-1.46	43.84
5300	-1.37	44.61
5350	-1.37	44.37
5400	-1.39	43.59
5450	-1.47	42.65
5500	-1.36	42.93
5550	-1.37	42.03
5600	-1.36	41.08
5650	-1.17	41.35
5700	-0.93	42.06
5750	-0.91	41.55
5800	-0.63	42.7
5850	-0.9	41.11

## WIFI2

Gain&Efficiency 增益、效率		
frequency 频率(MHz)	gain 增益(dBi)	efficiency 效率(%)
2400	1.14	52.43
2410	1.1	51.66
2420	1.07	51.34
2430	1.17	52.17
2440	1.27	53.54
2450	1.4	55.34
2460	1.58	55.05
2470	1.59	55.92
2480	1.42	55.71
2490	1.27	55.23
2500	0.85	55.76

Gain&Efficiency 增益、效率		
frequency 频率(MHz)	gain 增益(dBi)	efficiency 效率(%)
5150	-1.45	41.39
5200	-1.8	42.92
5250	-2.09	43.52
5300	-2.33	44.29
5350	-2.53	44.53
5400	-2.57	44.61
5450	-2.64	44.15
5500	-2.49	44.73
5550	-2.39	44.54
5600	-2.26	44.34
5650	-2.19	44.2
5700	-2.02	44.36
5750	-1.97	43.98
5800	-1.88	44
5850	-1.89	43.7

### 三、整机有源 OTA 暗室测试数据

#### A 模

Test	Wifi 5G TRP				Test	Wifi 5G TIS		
CH	36	100	161		CH	36	100	161
Frequency (MHz)	5180	5500	5805		Frequency (MHz)	5180	5500	5805
TRP(dBm)	9.32	9.35	9.89		TIS(dBm)	-67.23	-68.66	-67.85

#### B 模

Test	Wifi 2.4G TRP				Test	Wifi 2.4G TIS		
CH	1	6	11		CH	1	6	11
Frequency (MHz)	2412	2437	2462		Frequency (MHz)	2412	2437	2462
TRP(dBm)	11.62	11.61	11.23		TIS(dBm)	68.42	-67.02	-66.73