

生产要求:

- * 说明书/SPF-PB-01-C 球形芯片喂食器
- * 材质: 铜版纸印刷

刀线 折线 (不印刷)

折叠参考:



正面

178mm

Operating Instructions

Feeding Plan

1. Free mode (Default mode)
Anytime identify the RFID tag, the door will open
Menu> Feeding Plan> Free Mode> Confirm

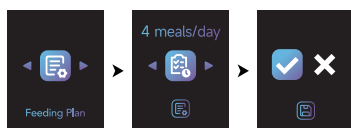


2. 3 meals/day
Menu> Feeding Plan> 3 meals/day> Confirm



● The three meals are set at 7:00-11:30 12:00-17:30 18:00-6:30+1
During each feeding period, the door will open 2 minutes when identify the RFID tag.

3. 4 meals/day
Menu> Feeding Plan> 3 meals/day> Confirm



● The four meals are set at 7:00-11:30 12:00-17:30 18:00-21:30 22:00-6:30+1
During each feeding period, the door will open 2 minutes when identify the RFID tag.

6

Operating Instructions

4. Custom Mode
Menu> Feeding Plan> Custom mode> Add> Choose 1-9 meals> Set feeding time> Set how long can eat(1-10min)> Confirm

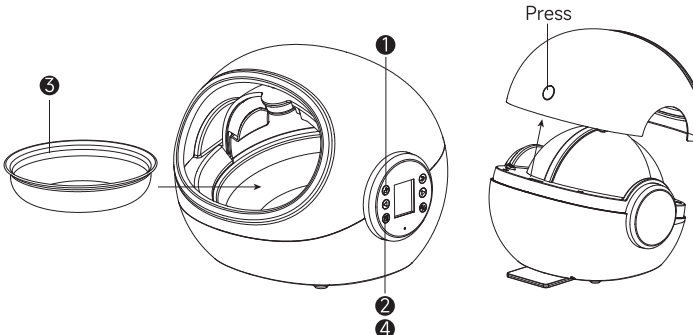


● When set the feeding plan, the door can be identified open once within the next half hour.
For example: set 08:30, during 08:30-09:00, can identify the ID once, and the door open 1-10 minutes (based on your set)

Note: Under Custom Mode, each feeding time set needs to be at least 30 minutes apart.

Take out/Put in food bowl

- Press and hold the unlock button for 2 seconds.
- Press and hold the open/close button for 1 second.
- After taking out the food bowl to fill it with food or cleaning it, put it back again.
- Press and hold the open/close button again for 1 second.



● In order not to affect the normal operation of the feeder, do not add the food beyond the mouth of the bowl.

7

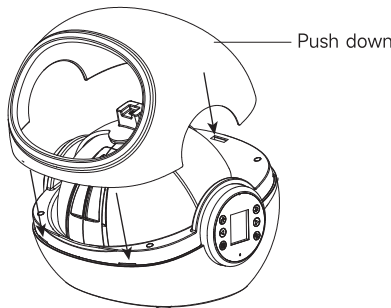
Take off the cover

Press the upper cover unlock button, wait until the upper cover pops open, and then separate it from the feeder body.

Operating Instructions

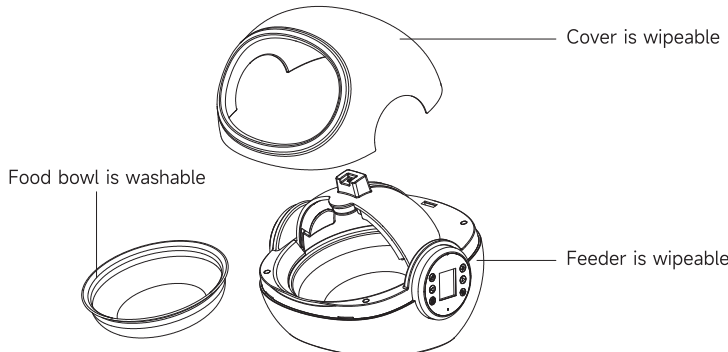
Cover installation

Align the cover with the feeder, press down until you hear the cover click into place.
● Please be sure to turn off the power while taking off cover and install cover.



Cleaning &Maintenance

- Make sure to turn off the power and remove the battery while cleaning & maintenance.



8

Suggested Training Mode

If your pet is hesitant or scared of the feeder, we suggest you open the door and unpower the feeder to allow the pet to get comfortable during the feeding process. After a few meals you can power the feeder back on to enable 'only allowed pets to eat'. Please note this process will allow other pets to eat while training is in process.

Troubleshooting

Button is not working	Make sure the Control Panel is unlocked. The 'Unlock' button and the 'Open/Close Door' Button need to long press.
Unable to open door by RFID tag	Make sure the power cable is connected properly and the power switch turns on. Make sure whether it is over the sensing range. Make sure whether the tag has been written successfully. Make sure there is no large area of metal around the feeder. If you have more than one microchip feeder, please ensure that each unit is used at least 1 meter apart.
Unable to open and close the door manually	Make sure there are no objects blocking the revolving door. Restart the feeder. Make sure long press the 'Open/Close Door' Button.

NOTES

- Please use the power adapter that comes with the machine.
- It is FORBIDDEN to place the whole feeder into dishwasher or disinfection cabinet.
- It is FORBIDDEN to use microwave ovens to heat the bowl.
- It is FORBIDDEN to use steel balls to clean the bowl.
- The water content should not exceed half a bowl while adding wet food.
- Please do not drop or hit the bowl. If the food bowl is cracked or damaged due to falling or impact, please stop using it.

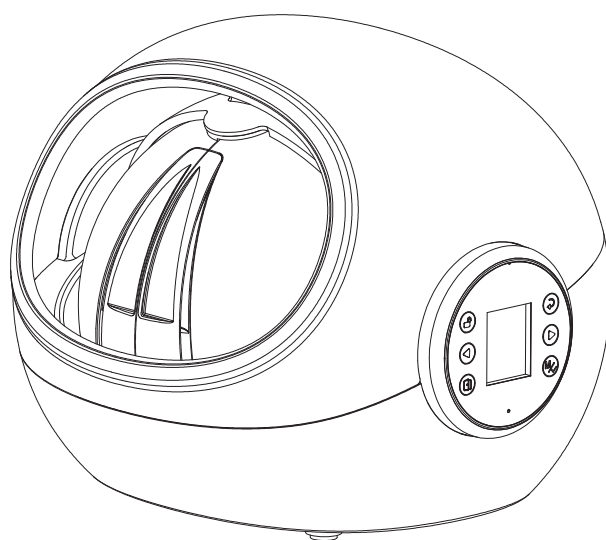


9

Sphere Microchip Pet Feeder

SPF-PB-01-C User Manual

RFID Identification	Recognize for the assigned pet	Dual power supply	Keep the food fresh
Easy clean	Anti-fall design	Diet control	Voice recording



Thank you very much for purchasing our products. Please read the user manual and all related information carefully and keep it for future reference.

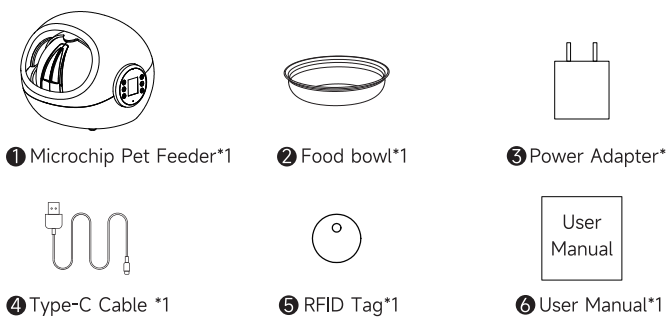
背面

178mm

Specifications

Name	Sphere Microchip Pet Feeder	Model	SPF-PB-01-C
Power	Type-C 5V/1A & 4*AA batteries	Input	DC5V = 1A
Cable Length	1.3m	Power	5W
Material	ABS+Melamine Bowl	Capacity	700mL
Feeding Mode	4 feeding modes to Choice	Voice Recording	10s
Dimensions	W255*D270*H227m	Weight	1.5kg

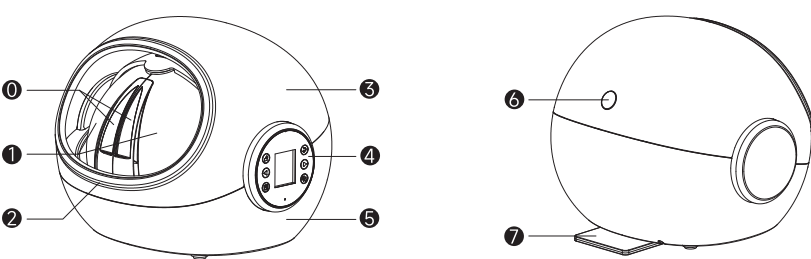
Accessories Details



*Due to product upgrades and optimization, if the product image is slightly different from the actual product, please refer to the actual product.

1

Product Composition

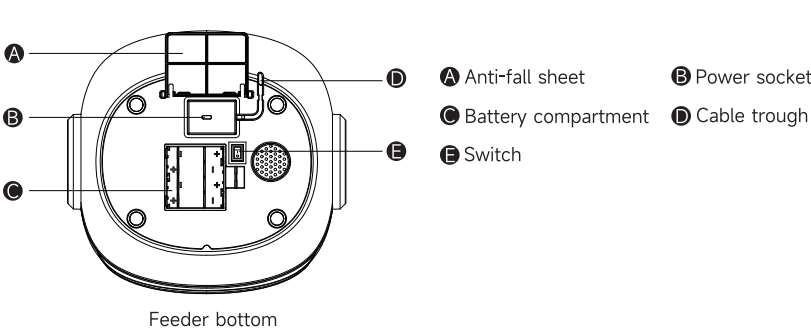


- Anti-pinch strip
- Revolving door
- Food window
- Feeder upper cover
- Control Panel
- Feeder base
- Cover unlock button
- Anti-fall sheet

Operating Instructions

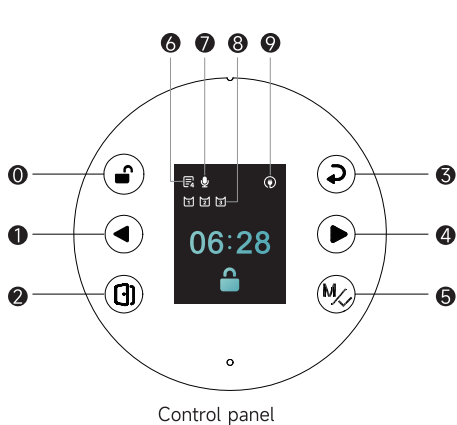
Connecting power

Open the anti-fall sheet, insert the power cord into the power socket at the bottom, snap the cord into the slot and turn on the power switch. It's recommended to install 4pcs new AA batteries at the same time(batteries not included), which will automatically switch after a power outage.ensure the normal operation of the feeder.
Note: The power of 4pcs AA battery is limited, can last about 48 hours depending on use.



2

Operating Instructions



Unlock/Lock button

Press and hold for 2 seconds to unlock, short press to lock

Left key

Page left,digital adjustment decrease

Open/Close door key

Press and hold for 1 second to open or close the door

Return key

Return to the previous action or previous menu

Right key

Page right,digital adjustment increase

Menu/Confirm key

Click to enter the menu on the home page, and click to confirm in the menu

Feeding plan mode

Shows the current feeding mode or feeding plan

Voice recording status

Shows whether voice recording has been set up

Tag identification status

Shows written RFID tag

Power supply

Shows the current power supply or battery supply mode

3

Operating Instructions

Time Setting

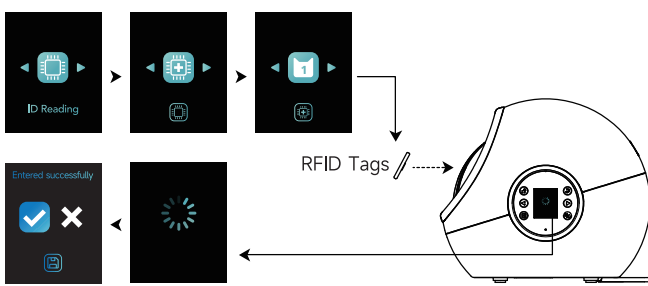
Menu> Time setting> Hour setting> Minute setting> Confirm



- In order to execute the feeding plan normally under the three feeding plans, please be sure to set the local time.

RFID Writing

Menu> Adding ID> Choose the ID number> Place the RFID tag near the feeder door> Enter Successfully> Confirm



- Feeder support writing up to 3 tags .

RFID Deleting

Menu> Adding ID> Delete ID> Choose the ID number> Delete ID Successfully> Confirm



- Deleting the ID does not require the RFID tag to be close the feeding window.

4

Operating Instructions

Voice Recording

Menu>Voice Recording>Start to record voice(longest 10s)> Confirm



- If the recording is less than 10 seconds, you can directly press the menu button to jump to the next step.
After successful written, the corresponding icon will be shown in the upper left corner of the homepage.
The voice message will be played while the feeding plan is executed.
Re-written will cover the last voice.

Voice playback

Menu>Voice Recording>Voice playback



FCC Statement
This equipment has been tested and found to comply with the limits for a Class B digital device, pursuant to part 15 of the FCC Rules. These limits are designed to provide reasonable protection against harmful interference in a residential installation. This equipment generates, uses and can radiate radio frequency energy and, if not installed and used in accordance with the instructions, may cause harmful interference to radio communications. However, there is no guarantee that interference will not occur in a particular installation. If this equipment does cause harmful interference to radio or television reception, which can be determined by turning the equipment off and on, the user is encouraged to try to correct the interference by one or more of the following measures:
•Reorient or relocate the receiving antenna.
•Increase the separation between the equipment and receiver.
•Connect the equipment into an outlet on a circuit different from that to which the receiver is connected.
•Consult the dealer or an experienced radio/TV technician for help.
Caution: Any changes or modifications to this device not explicitly approved by manufacturer could void your authority to operate this equipment.
This device complies with part 15 of the FCC Rules. Operation is subject to the following two conditions: (1) This device may not cause harmful interference, and (2) this device must accept any interference received, including interference that may cause undesired operation.
RF Exposure Information
This equipment complies with FCC radiation exposure limits set forth for an uncontrolled environment. This equipment should be installed and operated with minimum distance 20cm between the radiator and your body..

5