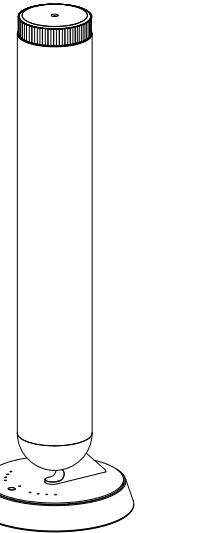


INSTRUCTION



Scent Diffuser User Manual
(Battery version)

Introduction

This device adopts all-metal, double-threaded design, which is easy to operate. The product has a exquisite appearance and is perfectly integrated with various styles. It adopts touch and Bluetooth dual control modes. It can be placed independently, and the fragrance is accurate and stable. Its main function is to create different fragrance styles for life, suitable for KTV, sales offices, shopping malls, 4S stores, hotels, airports, homes and health centers and other places.

Attentions

Please read this manual in detail before using the device and keep it carefully.

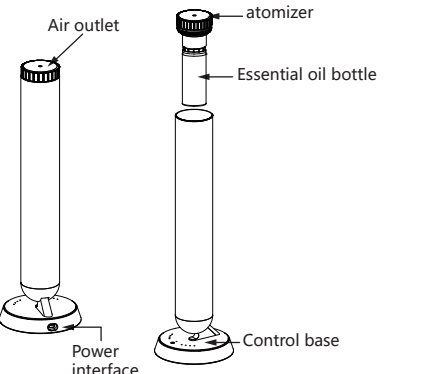
1. Please do not use overloaded power sockets, broken wire and charger. It may endanger your safety and cause a fire, please replace in time if it happens.
2. Please do not try to modify, disassemble or repair the device in order to avoid damage to the device, if you are not a technician. If the device is abnormal, please check whether it is operated normally according to the user manual, or check according to the Malfunction Debugging. If it cannot be solved, please contact seller timely.
3. Please do not invert or tilt the device when used. If the device needs to be transported to other sites, please maintain and clean the device (see Maintenance for details) first before package and transportation, in case of oil leakage to damage the device.
4. Please maintain and clean the device regularly to ensure the device in best working states.

Instruction of Essential Oil

1. Before refill canister with essential oil, please turn off the device for 2 minutes till oil of atomizer back to canister then take off the oil canister.
2. It's recommended to control the amount of essential oil and run out within 45 days, in order to avoid the deterioration of essential oils by oxidation.

Parameters

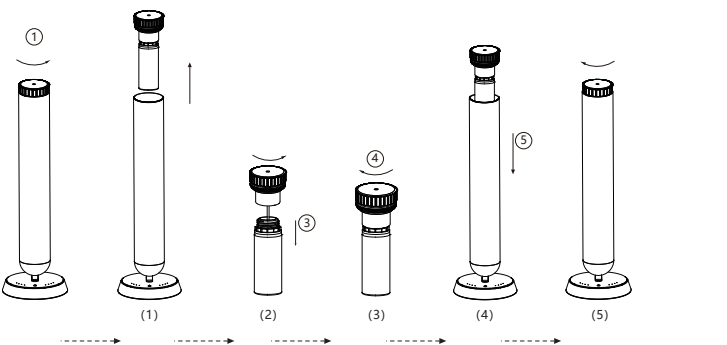
Size	Φ125*412(mm)
Capacity	110ml
N.W	1.35KG
Coverage	300m ³
Voltage	Type-C 5V-2A
Power	6.0W
Noise	≤38db
Package	W437*D183*H153(mm)
Lithium battery	10400mAh



Accessories

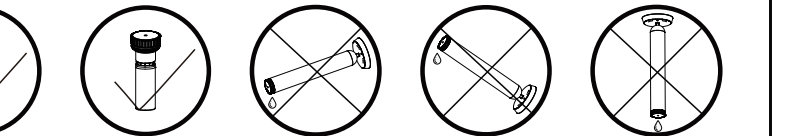
Item	Power cable	User manual
Diagram		

Installation

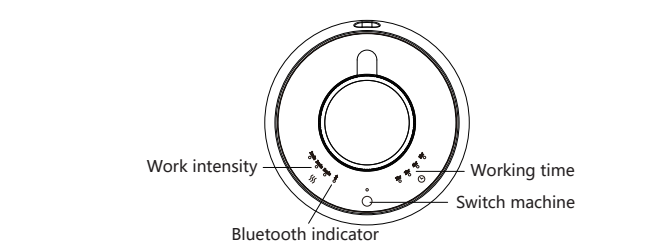


1. Rotate the atomizer counterclockwise ①, lift up the atomizer and essential oil bottle, and take out the atomizer and essential oil bottle. ②
2. Hold the essential oil bottle and rotate it counterclockwise to take out the essential oil bottle to separate it from the atomizer, and fill it with essential oil (110ml, the upper limit). ③
3. Tighten the essential oil bottle and contain the essential oil clockwise with the atomizer. ④
4. Put the essential oil bottle and the atomizer into the machine, and tighten it clockwise (no need to correct the direction). ⑤
5. Set working hours and start using the equipment.

Precautions



Description of LCD display



1. **Operating instructions:**
 - ① Connect the power cord to the power adapter (5V-2A), this device has charging function.
 - ② Connect the cord to the Type-C IN.
 - ③ The power adapter is plugged into the power socket, and the device is powered on.

2. **Controlling instruction:**

In the default shutdown state, the battery will be charged when the battery is low, and the \$\$\$ key light flashes progressively. Then the light goes out when the battery is sufficient.

When the machine is turned on and working while charging, the gear light is normally displayed. If there is no operation within 5 seconds, the indicator light will show charging status(the \$\$\$ key light will flash progressively).

The indicator light will return to the gear position light during operation.

Turn on: 'ON/OFF' button is blue light;
Turn off: 'ON/OFF' button is no light.
Low battery: 'ON/OFF' button is red and unable to turn on by tapping the key.

- Touch mode:
- ① Timer indicator lights on and Bluetooth indicator lights off .
Long press the '\$\$\$' button to change from touch mode to bluetooth mode.
 - ② Set the countdown time 1/2/4/8 hours in turn by touching '⌚' with corresponding indicator lights on.
 - ③ Set the 3 gears by touching '\$\$\$' in turn with corresponding lights on.
1st gear: work for 60 seconds/pause for 60 seconds
2nd gear: work for 60 seconds/pause for 180 seconds
3rd gear: work for 60 seconds/pause for 300 seconds
 - ④ Last settings will be reserved for next use.

Bluetooth mode:

- ① Bluetooth indicator lights on and Timer indicator lights off Long press the '\$\$\$' button to change from bluetooth mode to touch mode.
- ② Turn on the GPS & Bluetooth on the phone.
- ③ The Bluetooth indicator light flash slowly when connect your phone to the device.
- ④ The Bluetooth indicator flash quickly during data transferring.
- ⑤ Last settings will be reserved for next use.

Work Frequency: Spray time 5s - 300s(can be adjusted, 5s per beat)
Pause time 5s - 300s(can be adjusted, 5s per beat)

Work Day : Default everyday, can be set as your like on the APP.

Maintenance

In order to ensure the best diffusive effect, please check and maintain the device every six months, or when you replace a new fragrance, or when the diffusing effect get weak as the following steps.

1. Take off the oil canister which is spent.
2. Fill industrial alcohol into the canister and clean it.
3. After clean the oil canister, refill canister with little alcohol and install it on the device then make the device stay in working status for 5-8 minutes.
4. Turn off the power when finish cleaning.

Malfunction Debugging

Please try to solve the problem as below before fixing the machine.

Breakdown	Solution	Breakdown	Solution
Not working	-Please check that the power adapter is USB 5V-2A and that the Type-C and USB ports are plugged in correctly. -Check if device is not in work period.	Oil leakage	-Check if canister connects to atomizer closely. -Check if seal ring is deformed or damaged -Check if atomizer is damaged.
No mist Mist gets weak	-Check if pump works or not, and if airflow from air outlet. -Check if atomizer core and oil tube are loose or blocked. -Check if seal ring gets damaged or fall off.	Abnormal noise	-Check if air pump is loose, please fix it correctly. -Check if air pump is damage, please replace a new one.

After-sale Service

The warranty is 1 year from the date of sale, not including device shell, adapter, electric wires, seal ring and the other vulnerable parts, as well as the damage caused by human or accident. Permanent maintaining for value will be provided if the machine exceed the warranty.

If there is any issue of after-sales, please contact authorized sales service in corresponding area, or contact Sales Center directly.

Warranty Card

This card is the warranty for device's quality, please fill it with actual information.

Warranty card one		Warranty card two	
Start Date of Warranty Period		Start Date of Warranty Period	
Malfunction Description		Malfunction Description	
Date of Verify		Date of Verify	
Maintenance Result		Maintenance Result	
Maintainer's Signature		Maintainer's Signature	

FCC Warning:

This equipment has been tested and found to comply with the limits for a Class B digital device, pursuant to part 15 of the FCC Rules. These limits are designed to provide reasonable protection against harmful interference in a residential installation. This equipment generates, uses and can radiate radio frequency energy and, if not installed and used in accordance with the instructions, may cause harmful interference to radio communications. However, there is no guarantee that interference will not occur in a particular installation. If this equipment does cause harmful interference to radio or television reception, which can be determined by turning the equipment off and on, the user is encouraged to try to correct the interference by one or more of the following measures:

- Reorient or relocate the receiving antenna.
- Increase the separation between the equipment and receiver.
- Connect the equipment into an outlet on a circuit different from that to which the receiver is connected.
- Consult the dealer or an experienced radio/TV technician for help.

Caution: Any changes or modifications to this device not explicitly approved by manufacturer could void your authority to operate this equipment.

This device complies with part 15 of the FCC Rules. Operation is subject to the following two conditions:

(1) This device may not cause harmful interference, and (2) this device must accept any interference received, including interference that may cause undesired operation.

This equipment complies with FCC radiation exposure limits set forth for an uncontrolled environment. This equipment should be installed and operated with minimum distance 0cm between the radiator and your body.