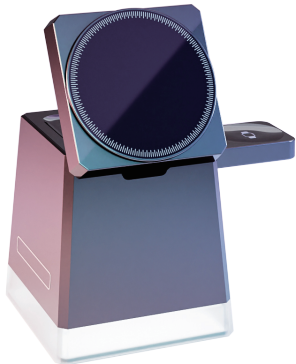


3-in-1 Wireless Charging Station



User Manual

Thank you for choosing the Wireless Charger. Please read this user manual carefully before use and keep this manual in a safe place for future reference.

Safety Precautions

1.DO NOT place or use the product in the high-tempera-ture environment such as intense sunlight and fire(Note: There may be explosion if the product is in the environment over 212F/100 C) .

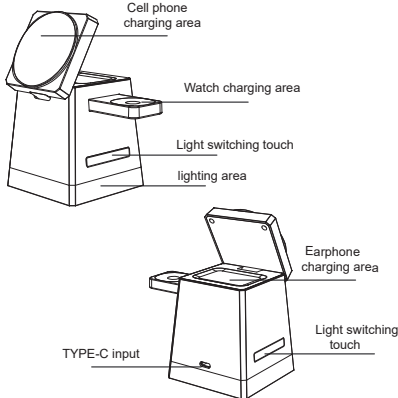
2.DO NOT use the product in excess of its output rating to avoid fire or injury.

3.DO NOT expose the product to rain or snow.

4.Non-professional personnel are not allowed to modify, repair or disassemble the product without authorization.

5.Please remove your phone case before charging if the thickness >4mm/0.16in.

6.Keep out of reach of infants and children.
Note: To ensure the safe and efficient charging of 3 devices, it is imperative to utilize a 9V/3A adapter(Qualcomm Quick Charger 2.0 or 3.0)in conjunction with a quick charging cable. Failure to employ the suitable adapter and cable may result in the charger's inability to charge a phone or 3 devices simultaneously.and could potentially lead to charger damage.



Specifications

Input : 9V=3A
Output : For Phone 15W Max
(For iPhone 7.5W Max)
For Airpods 5W Max
For iWatch 3W Max

Package Contents

3-in-1 Wireless Charger * 1
Type-C Charging Cable (1m/39.4in) * 1
User Manual * 1

Compatible Devices

- 1. Phone:
iPhone 15 Plus/ 15 Pro Max/15 Pro/ 15/ 14 Plus/14 Pro Max/14 Pro/ 14/13 Pro Max/13 Pro/13/13Mini/12/12 Pro/12 Pro Max/12 Mini
- 2. Watch:
Apple Watch Series 2/3/4/5/SE/6/7/SE 2nd Generation/8/ Ultra Series 9/ Ultra2
- 3.Earbuds:
AirPods Pro 2nd Generation/AirPods 3 MagSafe/AirPods Pro MagSafe/AirPods Pro/AirPods 2nd Generation (Model: A1938)

*Note: The earbuds charging area is only designed for charging AirPods with wireless charging capability, it is not recommended to use a protective case while charging the earbuds case.

How to Solve Abnormal Charging

- 1. Please use an adapter that meets the requirements.
- 2.Confirm whether your device has magnetic wireless charging function before use.
- 3.Check whether your phone wears a magnetic protective case. (Note: The thickness of the protective case is recommended not to exceed 4mm/0.16in.)
- 4.If there are foreign objects on the charging area, the charger will auto detect them and provide power off protection. (Note: Please remove foreign objects.)
- 5.When the temperature of the wireless charger is too high, it will automatically start the protection, Please unplug the power supply first and use the charger after it recovers the temperature.
- 6.When the abnormal charging situation occurs, please restart your phone or watch, Wait for the wireless charger to cool down, and try to remove the protective case of your phone to charge.
- 7. When charging your cell phone/headset or watch, place them in their respective charging areas.

About Indicator Lights

Power Status:
Default setting is lights off.

Warm Light:
Press the light button for the first time.

Cool Light:
Press the light button for the second time.

Natural Light:
Press the light button for the third time.

No Light Display:
Press the light button for the fourth time to turn off the indicator light.

Note:
No indicator light will be displayed when the wireless charger charges your devices.

FAQS

Q: Why is my phone not able to attach and charge on the wireless charger properly?
A: The wireless charger is only compatible with Apple's MagSafe series phones (12-15 series). To charge your phone, you must use it without a protective case or with a MagSafe-compatible phone case otherwise, your phone will not attach to the wireless charger.

Q: Why does the product heat up?
A: it is normal if the product heats up slightly during charging, which won't affect its safety and service life.

Q: What safety protections does this product have?
A: It has overcurrent protection, overvoltage protection, short circuit protection, overheating protection, and more.

Q: Why can't the wireless charger charge my AirPods 2?
A: 1.AirPods 2nd Generation (case) has two version: A1602 and A1938. The A1938 AirPods support wireless charging, while the A1602 AirPods do not support wireless charging. If your AirPods model is A1602,the wireless charger cannot charge it.

There are two versions of the AirPods 2 case, with one version having the indicator light inside the shell and lacking wireless charging function.However, our wireless charger can only charge another version of the AirPods 2 case that has wireless charging function and an indicator light located outside the shell. Please make sure to differentiate between the two versions.



Made in China

FCC Warning

This device complies with part 15 of the FCC Rules. Operation is subject to the following two conditions: (1) This device may not cause harmful interference, and (2) this device must accept any interference received, including interference that may cause undesired operation. Any changes or modifications not expressly approved by the party responsible for compliance could void the user's authority to operate the equipment.

NOTE: This equipment has been tested and found to comply with the limits for a Class B digital device, pursuant to Part 15 of the FCC Rules. These limits are designed to provide reasonable protection against harmful interference in a residential installation. This equipment generates, uses and can radiate radio frequency energy and, if not installed and used in accordance with the instructions, may cause harmful interference to radio communications. However, there is no guarantee that interference will not occur in a particular installation.

If this equipment does cause harmful interference to radio or television reception, which can be determined by turning the equipment off and on, the user is encouraged to try to correct the interference by one or more of the following measures:

- Reorient or relocate the receiving antenna.
- Increase the separation between the equipment and receiver.
- Connect the equipment into an outlet on a circuit different from that to which the receiver is connected.
- Consult the dealer or an experienced radio/TV technician for help.

FCC Radiation Exposure Statement
This equipment complies with FCC radiation exposure limits set forth for an uncontrolled environment. This equipment should be installed and operated with a minimum distance of 20 cm between the radiator and your body.