

产品规格书

SPECIFICATION

客户:

CUSTOMER:

制造商

深圳市扬程通电子有限公司

SUPPLIER:

Shenzhen Yangcheng Tong Electronics Co., LTD

地址

深圳市龙岗区横岗街道西坑社区梧岗路24号8楼

Add:

8 F, No. 24, Wugang Road, Xikeng Community, Henggang Street,
Longgang District, Shenzhen

产品名称:

WIFI单极天线 (5G)

DESCRIPTION:

WIFI monopole antenna

产品编码:

MATERIAL CODE:

供应商产品名称: WiFi单极天线 (5G)

SUPPLIER PRODUCT NAME:WIFI monopole antenna

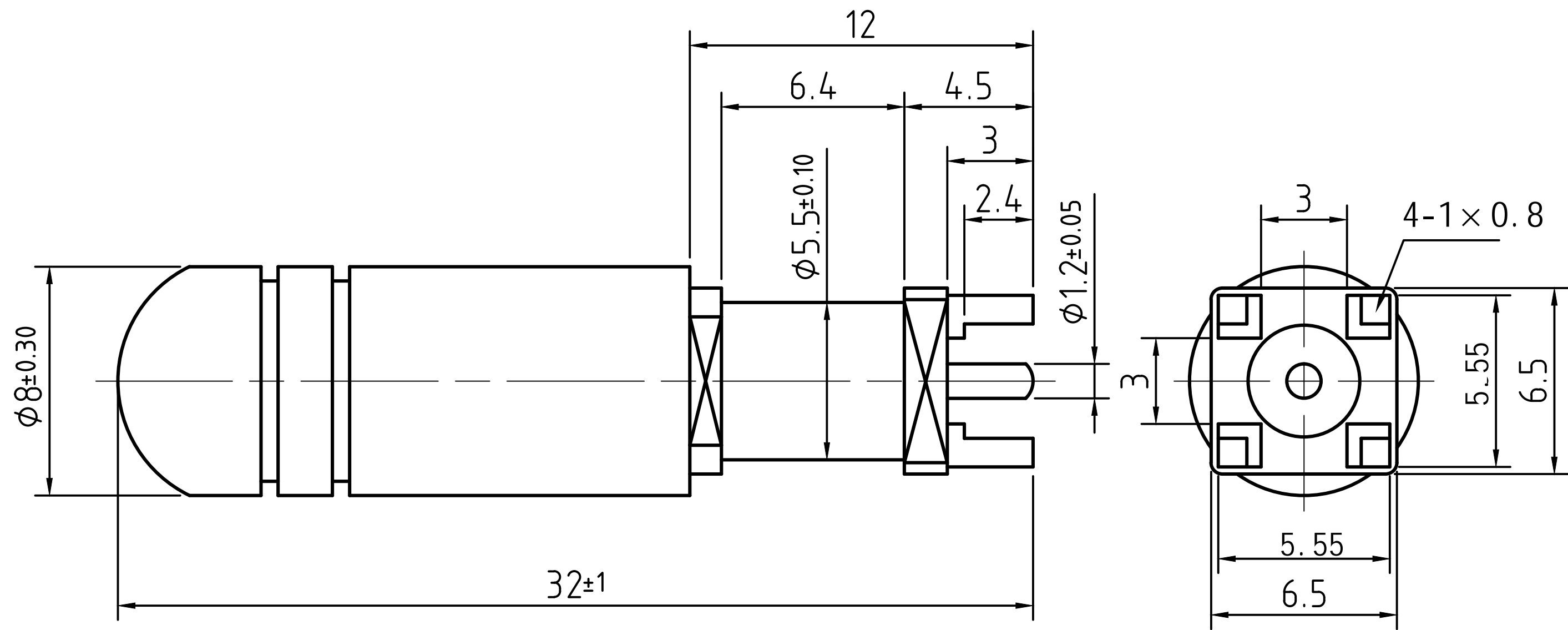
供应商物料编码:

SUPPLIER MATERIAL CODE:

日期:

2022.9.7

DATE:



电气特性Electrical

特性阻抗Characteristic Impedance	50 ohm
频率范围Frequency Range	5150-5850Mhz
电压驻波比VSWR	≤ 2.0
储存温度Storage Temperature	$-40^{\circ}\text{C} \sim +85^{\circ}\text{C}$
极化方式polarization	垂直vertical
雷电保护Lightning Protection	直流接地DC Ground
工作温度Operation Temperature	$-40^{\circ}\text{C} \sim +85^{\circ}\text{C}$

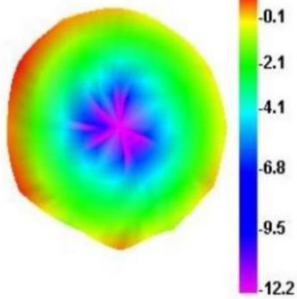
材料及涂镀 Material and plating

	Material	plating
外壳Body	黄铜Brass	金 Au/镍NI
绝缘子Insulator	聚四氟乙烯PTFE	-
内导体Center conductor	黄铜Brass	金 Au
护套 Sheath	胶棒Glue stick	-

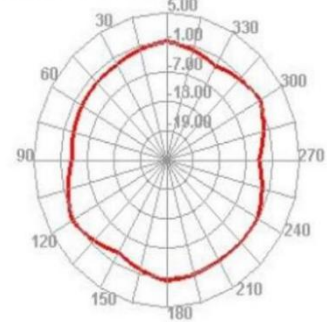
六：暗室测试报告

Passive Test For 5150-5850									
Freq (MHz)	Effi (%)	Effi (dB)	Gain (dBi)	UHS (%)	DHIS (%)	Max (dB)	Min (dB)	Attenut Hor	Attenut Ver
5150	57.5	-2.4	1.29	35.8	21.768	1.29	-12.22	59.04	58.22
5220	61.2	-2.13	1.67	37.7	23.494	1.67	-11.29	58.69	58.07
5290	63	-2.01	1.75	37.7	25.293	1.75	-11.12	58.96	58.16
5360	52.7	-2.78	1.51	30.7	22.058	1.51	-17.05	59.02	58.59
5430	75.9	-1.2	2.95	42	33.867	2.95	-23.77	60.59	59.65
5500	64.2	-1.93	2.26	34.7	29.484	2.26	-19.56	60.82	59.59
5570	48.2	-3.17	1.17	25.7	22.509	1.17	-17.07	62.12	60.71
5640	76.9	-1.14	2.8	41.1	35.811	2.8	-12.97	62.52	61.91
5710	63.6	-1.96	1.55	33.3	30.287	1.55	-14.87	62.36	61.76
5780	59.8	-2.24	1.12	31.4	28.336	1.12	-12.43	62.8	62.24
5850	52.9	-2.77	0.73	28.2	24.658	0.73	-11.96	63.41	62.86

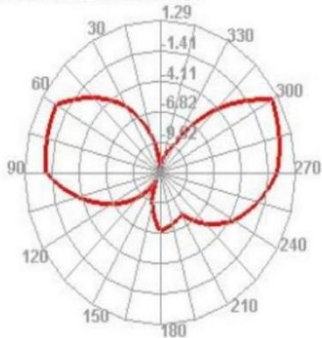
5150.000MHz



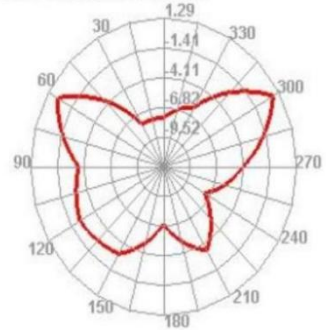
5150.000MHz H



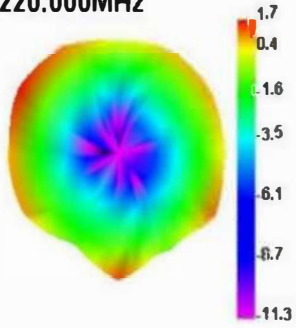
5150.000MHz E1



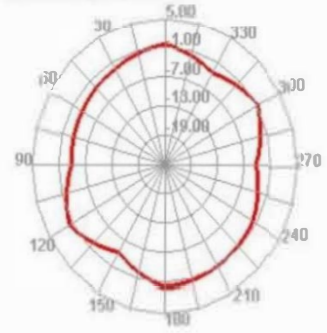
5150.000MHz E2



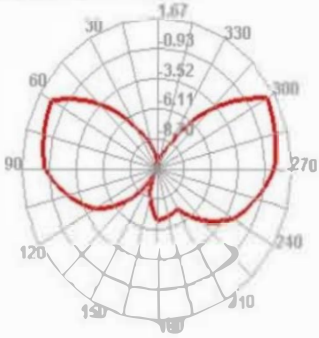
5220.000MHz



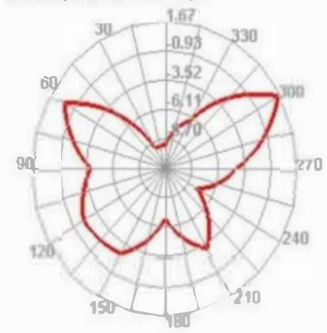
5220.000MHz H



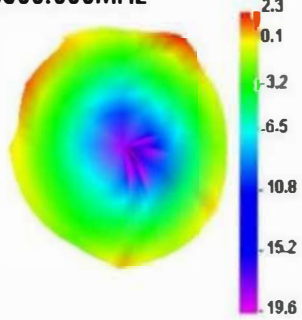
5220.000MHz E1



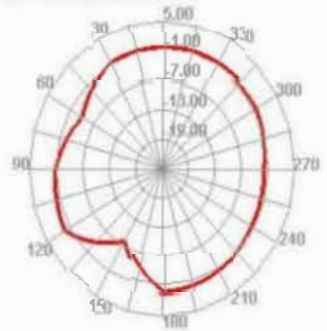
5220.000MHz E2



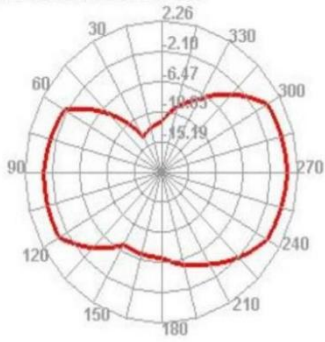
5500.000MHz



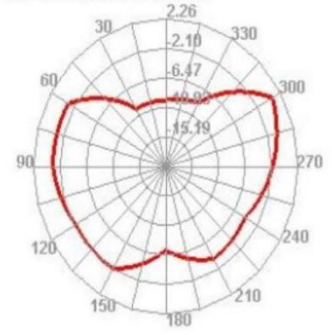
5500.000MHz H



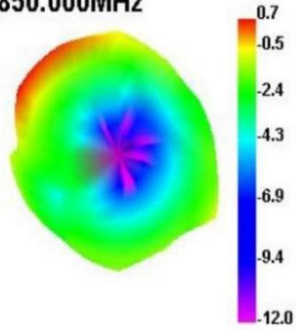
5500.000MHz E1



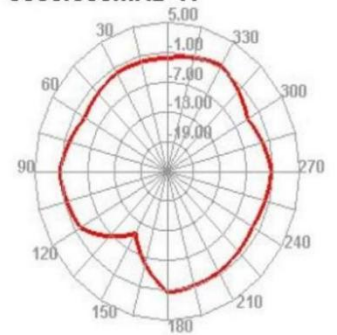
5500.000MHz E2



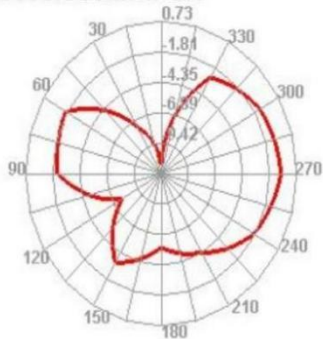
5850.000MHz



5850.000MHz H



5850.000MHz E1



5850.000MHz E2

