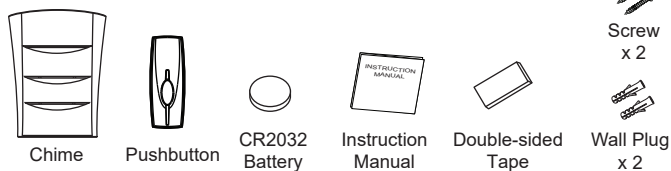


EN Instruction Manual

IQ30 Portable Wireless Door Chime Kit



This package contains:



Battery Caution & Disposal Information:

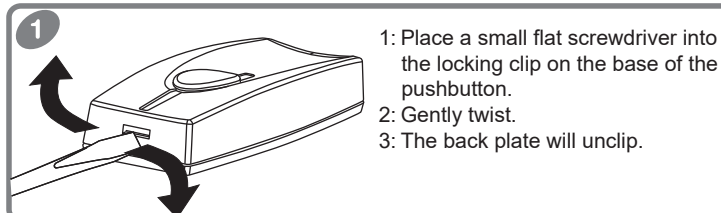
1. Do not mix old and new batteries.
2. Do not mix Alkaline, Standard (Carbon-Zinc) or Rechargeable (Ni-Cad, NiMH, or Lithium) batteries.
3. Do not dispose of batteries in fire.
4. Batteries should be recycled or disposed of as per local guidelines.

WARNING

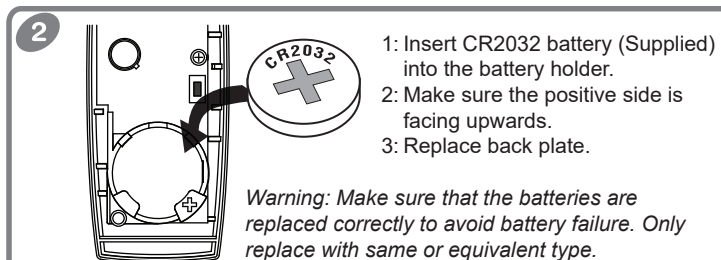
- **INGESTION HAZARD:** This product contains a button cell or coin battery.
- **DEATH** or serious injury can occur if ingested.
- A swallowed button cell or coin battery can cause **Internal Chemical Burns** in as little as **2 hours**.
- **KEEP** new and used batteries **OUT OF REACH** of **CHILDREN**.
- **Seek immediate medical attention** if a battery is suspected to be swallowed or inserted inside any part of the body.



Setup:

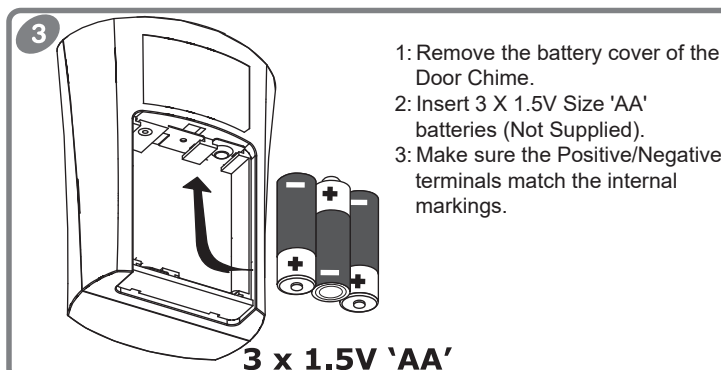


- 1: Place a small flat screwdriver into the locking clip on the base of the pushbutton.
- 2: Gently twist.
- 3: The back plate will unclip.



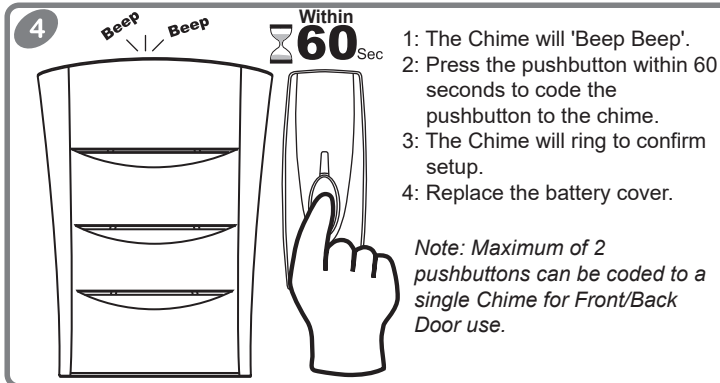
- 1: Insert CR2032 battery (Supplied) into the battery holder.
- 2: Make sure the positive side is facing upwards.
- 3: Replace back plate.

Warning: Make sure that the batteries are replaced correctly to avoid battery failure. Only replace with same or equivalent type.



- 1: Remove the battery cover of the Door Chime.
- 2: Insert 3 X 1.5V Size 'AA' batteries (Not Supplied).
- 3: Make sure the Positive/Negative terminals match the internal markings.

3 x 1.5V 'AA'

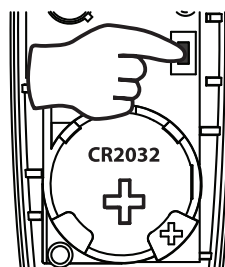


- 1: The Chime will 'Beep Beep'.
- 2: Press the pushbutton within 60 seconds to code the pushbutton to the chime.
- 3: The Chime will ring to confirm setup.
- 4: Replace the battery cover.

Note: Maximum of 2 pushbuttons can be coded to a single Chime for Front/Back Door use.

Functions:

Melody Selection



To select a melody for the Door Chime

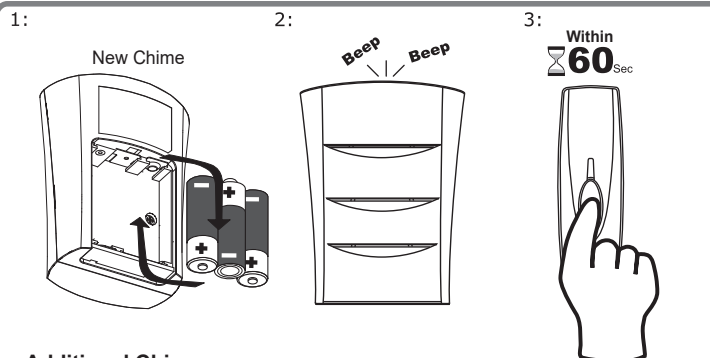
- 1: Remove the Back Plate from the pushbutton.
- 2: Press the Melody Select button.
- 3: The chime will play the newly selected sound.
- 4: Press again to select the next melody.

Note: For Front/Back door setup, select a different melody in one of the pushbuttons.

4 Selectable Melodies

- | | |
|-----------------------|-------------------|
| 1: Ding Dong (Repeat) | 3: Alarm |
| 2: Westminster | 4: Ding Dong Ding |

Adding Additional Chime / Pushbutton



Additional Chime

To add an additional Chime unit to the Door Chime kit

- 1: Remove the batteries on your NEW Door Chime and wait for 10 seconds.
- 2: Replace the batteries, making sure the Positive/Negative terminals match the internal markings.
- 3: The Chime will 'Beep Beep' to indicate that it has entered the learning mode.
- 4: Press the Pushbutton within 60 seconds, to pair the additional Chime to the Pushbutton.
- 5: Chime will ring to confirm setup, wait 60 seconds for the Chime to exit the learning mode before pressing the pushbutton again.

Additional Pushbutton

To add an additional Pushbutton to the Door Chime kit

- 1: Remove the batteries on your Door Chime and wait for 10 seconds.
- 2: Replace the batteries, making sure the Positive/Negative terminals match the internal markings.
- 3: The Chime will 'Beep Beep' to indicate that it has entered the learning mode.
- 4: Press both Pushbuttons within 60 seconds, to pair the additional Pushbutton to the Chime.
- 5: Chime will ring to confirm setup, wait 60 seconds for Chime to exit the learning mode before pressing the pushbutton again. For Front/Back door setup, select a different melody in one of the pushbuttons - See Melody Selection.

Front Door

1



2

Back Door

Note: Maximum of 2 pushbuttons can be coded to a single Door Chime.

Installation Guide

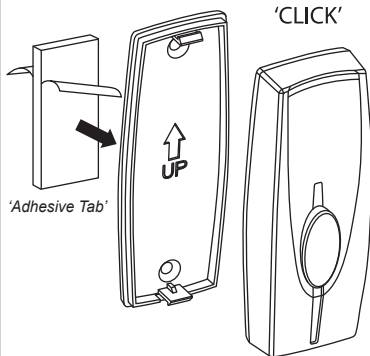


1 Avoid locating the Pushbutton/Chime on or directly near metallic surfaces as this may reduce the operation range.
UPVC Door Frames:
When locating the bell push onto a UPVC door, always check the operating performance before final installation, internal metal frame may affect performance.

Note: Try adjusting the location of the Pushbutton to the Left/Right or place on external wall.

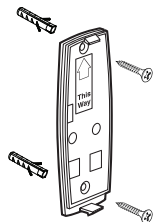
Installation Guide: Pushbutton

2

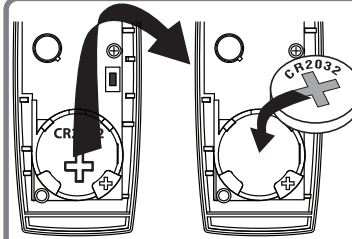


- 1: Using back plate as a template.
- 2: Make sure UP arrows point UP.
- 3: Select ideal position for best performance.
- 4: Stick adhesive tab to back plate & stick into position.
- 5: Clip the Pushbutton on to the back plate making sure the Pushbutton "Clicks" into place.

NOTE: Pushbutton can be screwed into position using the two hole marks as guides on the back plate.



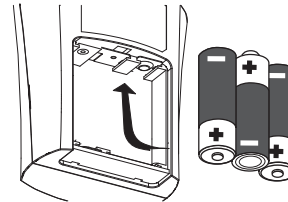
Changing Batteries



1 x 3V CR2032

Pushbutton

- 1: Remove back plate from the Pushbutton.
- 2: Remove old battery from the holder.
- 3: Replace with new 'CR2032' 3V battery.
- 4: Insert into holder making sure '+' is facing up.
- 5: Test Chime Kit.



3 x 1.5V 'AA'

Chime Unit

- 1: Remove Batteries.
- 2: Insert new batteries, 3 X 1.5V size 'AA'.
- 3: Make sure Positive/Negative match the internal markings.
- 4: Wait 60 seconds before testing the Chime Kit.

Always dispose of old batteries in an environmentally friendly way.

Trouble Shooting

In case the door chime does not sound, please check the following:

- a) Dead batteries in either Pushbutton or Door Chime.
- b) Wrong battery polarity in either Pushbutton or Door Chime.
- c) Pushbutton and Door Chime are not paired together, see setup guide.
- d) Materials in between the Pushbutton & Chime will reduce the operating range, move the Door Chime closer to the Pushbutton.
- e) Wireless devices can be affected by external sources e.g. wireless home alarms or power transformers/adapters.

Installation Guide: Chime

3

Place the door Chime within the operating range of the pushbutton. The transmission range of the wireless signal may be reduced while passing through Walls, Doors and Ceilings, etc. Chime unit for INDOOR use only.

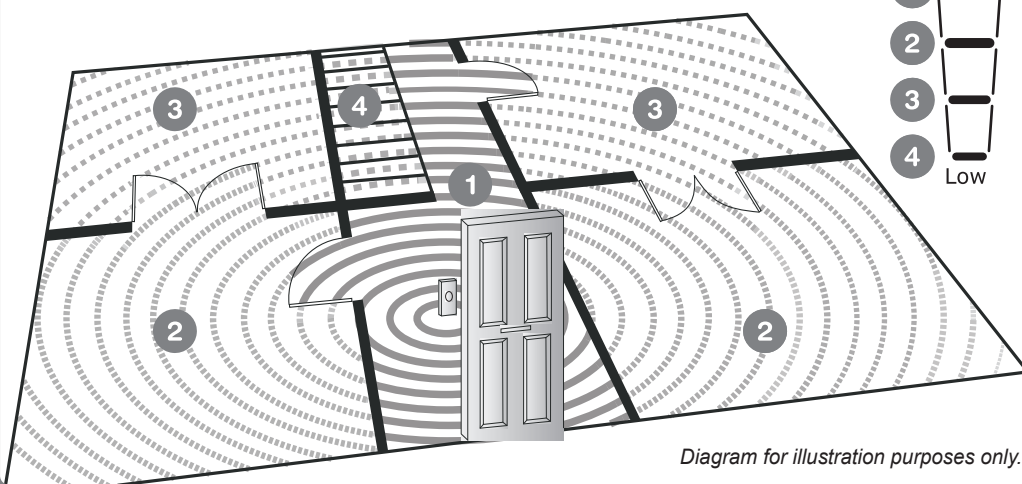


Diagram for illustration purposes only.

IMPORTANT:

There are no serviceable parts, do not repair. The appliance is not to be used by children or persons with reduced physical, sensory or mental capabilities, or lack of experience and knowledge, unless they have been given supervision or instruction. Children should be supervised to ensure that they do not play with the appliance.

Specification



Pushbutton
Power: 1 x CR2032 3V DC
Battery (Included)
IP44 Weather Resistant



Portable Door Chime
Power: 3 x 'AA'/LR6 1.5V
Batteries
Range: 200 ft (60 m)
Indoor Use Only

IQ America Three Year Warranty

This is a "Limited Warranty" which gives you specific legal rights. You may also have other rights which vary from state to state and province to province.

For a period of three years from the date of purchase, any malfunction caused by factory defective parts or workmanship will be corrected at no charge to you. To obtain a refund or a replacement, return the product to the place of purchase.

NOT COVERED: Repair service, adjustment and calibration due to misuse, abuse or negligence. Unauthorized service or modification of the product or of any furnished component will void this warranty. This warranty does not include reimbursement for inconvenience, installation, setup time, loss or use or unauthorized service.

This warranty covers only IQ America products and is not extended to other equipment and components that a customer uses in conjunction with our products.

This warranty is expressly in lieu of all other warranties, express or implied, including any warranty, representation or condition of merchant ability of that the products are fit for any particular purpose or use, and specifically in lieu of all special, indirect or incidental or consequential damages.

Repair or replacement shall be the sole remedy of the customer and there shall be no liability on the part of IQ America for any special, indirect, incidental or consequential damages, including but not limited to any loss of business or profit, whether or not foreseeable. Some states or provinces do not allow the exclusion or limitation of incidental or consequential damages, so the above limitation or exclusion may not apply to you. Retain receipt for warranty claims.

Note:

This device complies with part 15 of FCC Rules. Operation is subject to the following two conditions:

- (1) This device may not cause harmful interference, and
- (2) This device must accept any interference received, including interference that may cause undesired operation.

The changes or modifications not expressly approved by the party responsible for compliance could void the user's authority to operate the equipment. To comply with FCC RF exposure requirements, this device and its antenna must not be co-located or operated in conjunction with any other antenna or transmitter.

Helpline

Customer service number:

For problems or questions, please call us at **1-800-296-1869**

Instructions: Please retain this instruction manual for future reference