

# WIFI Antenna

## 1. Explanation of Product number :

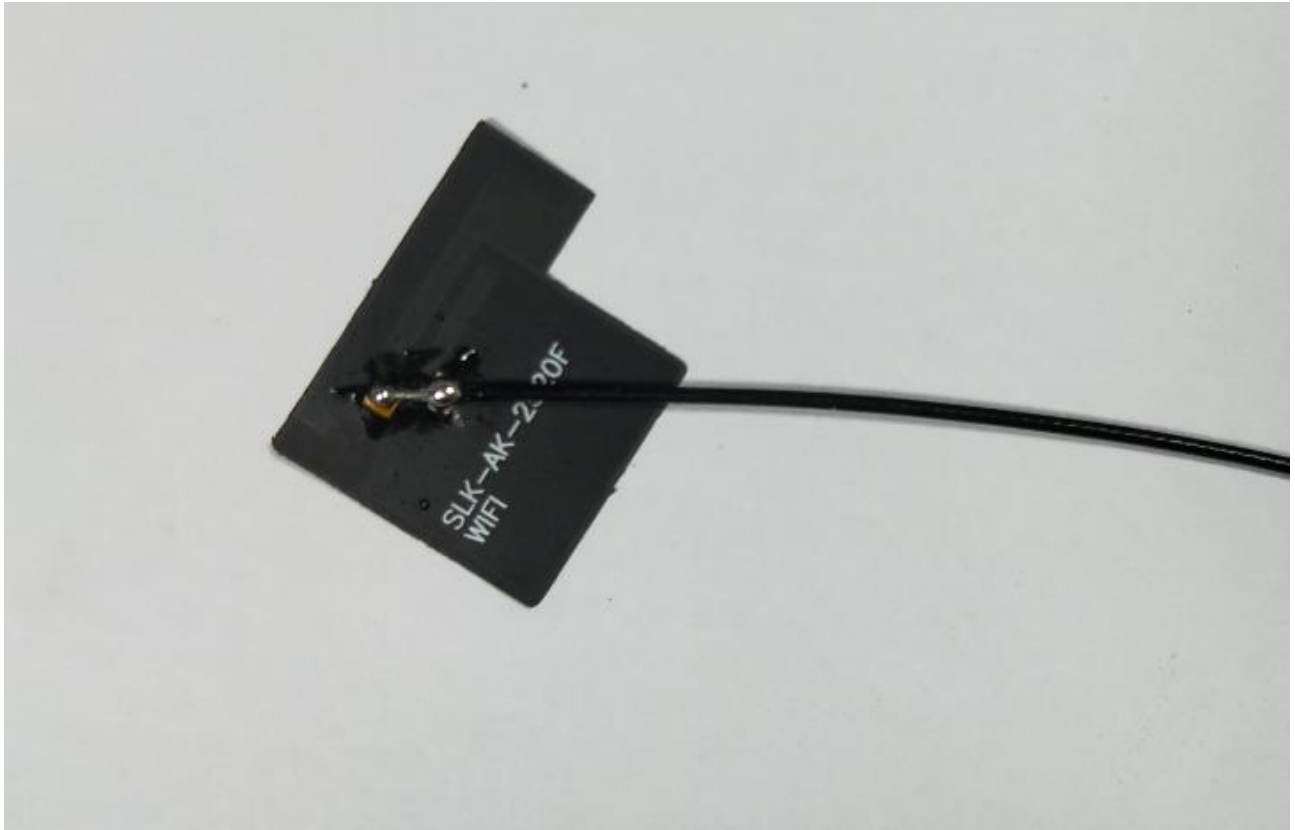
**S L K - 2 5 2 0 F - R - 3 5 0 I - B**

**1**

**2**

**3**

**4**



Product Code:

(1) Project:

Model: 2520F: SLK-2520F(WIFI antenna 2.4~2.5+5.15~5.85GHz)

(2) Welding Position

R:Right

(3) Cable Length:

350I: 350\*1.13MM一代

(4)Cable Color

B: Black

## 2. Features

\*Stable and reliable in performances

\*Compact size

\*RoHS compliance

### 3. Applications

- \* IEEE802.11 (a/b/g/n)
- \* Hand-held devices when WIFI (802.11a/b/g/n) functions are needed

### 4. Description

Holy bond's External antenna series are specially designed for WIFI (802.11 a/b/g/n) applications. Based on Holy bond's proprietary design and processes, this External antenna has excellent stability and sensitivity to consistently provide high signal reception efficiency.

### 5. Electrical Specifications

#### 5-1

Characteristics	Specifications	Unit
Outline Dimensions	25.43*20.09*0.12	mm
Bandwidth(under-10dB return loss)	130min	MHz
VSWR	3max	
Impedance	50	$\Omega$
Polarization	Linear Polarization	

#### 5-2

VSWR



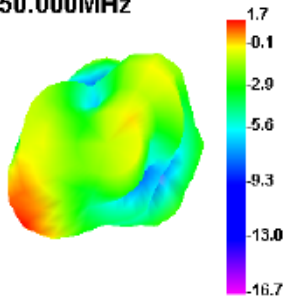
S11



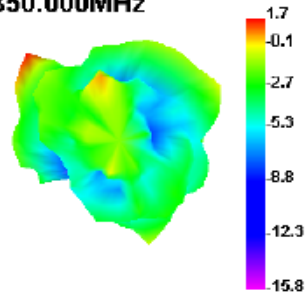
### 5-3.WIFI Antenna Gain/Efficiency/Radiation Pattern of 3D

Freq (MHz)	Effi (%)	Effi (dB)	Gain (dBi)
2400	45.48	-3.42	1.73
2410	44.03	-3.56	1.75
2420	46.19	-3.35	1.73
2430	47.29	-3.25	1.69
2440	48.23	-3.17	1.62
2450	46.76	-3.3	1.74
2460	48.52	-3.14	1.97
2470	46.04	-3.37	1.83
2480	47.65	-3.22	1.95
2490	44.88	-3.48	1.72
2500	48.55	-3.14	2.31
5150	40.47	-3.93	1.61
5350	41.3	-3.84	1.01
5550	40.37	-3.94	1.48
5750	41.48	-3.82	2.45
5850	41.79	-3.79	1.67

2450.000MHz



5850.000MHz



## 6. Antenna Dimensions (unit: mm)

