

Shanghai Shangyuan Communication Technology Co., LTD

Antenna admission book

Customer name: Yunjia		Project name: V114	
Working frequency band: WiFi2.4G&5G			
Hardware version: V114_ETH_V0.1			
Shangyuan material specifications			
specifications and models	Shang Yuan material number	Customer material number	
WIFI ant	SZ24225IA70	2.1.09.12.010601	

Change the resume			
Preparation / change date	Change the content	Change the person	edition
2024.07.19	A new release	XUWEI	A

Shang Yuan will sign the column				
research and development	structure:	examine and verify:	Quality Engineer:	ratify:
	radio frequency:	examine and verify:		

The customer will sign the column			
electronic engineer	project manager	construction engineer	Quality engineer

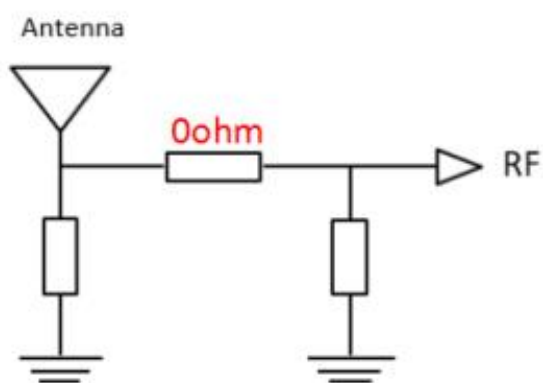
Antenna admission book.....	1
1. item information	3
2. Antenna matching circuit.....	3
3. Complete machine test data	4
3.4 Active test data	5
4. The prototype environment processing mode	6
5. Antenna mounting position	7
Vi. Mass production antenna index	7
Vii. Engineering drawing	8
Viii. ROHS restricted substance composition questionnaire	9
Ix. Reliability test report	10
X. Size inspection report	11
Eleven, material proof	12
Xii. Packaging method	11

一、 item information

.11 Schematic diagram



二、 Antenna matching circuit



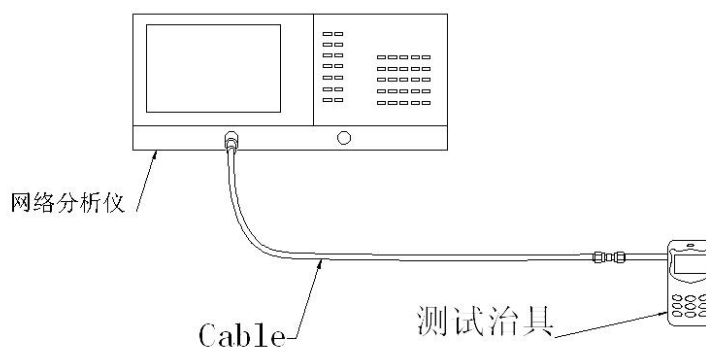
三、 Complete machine test data

3.1 S11 Description of the test method

Test Equipment: Network Analyzer (Agilent E5071C)

Test method: Export a 50 Ohm CABLE cable from the instrument test port, connect the SMA connector of the test device after the calibrator, and record the echo loss and standing wave ratio corresponding to the relevant frequency point.

The test schematic diagram is as follows:



Schematic diagram of the test

3.2 Test environment

Test System: MPS 6450 Multi-sensor OTA Measurement System (XH-IoT)

Test environment: temperature $22^{\circ}\text{C} \pm 3^{\circ}\text{C}$, humidity $50\% \pm 15\%$

Test equipment: Use the network analyzer R & S ZND / Agilent E5071C when testing the passive data

When testing active data, use the comprehensive meter Agilent 8960 / CMW500 / S P9500E / SP 8315

OTA实验室	综测仪器	其他设备
	 SP9500-CTS-5G	 OTA head hand
	 CMW500	 OTA ear hand
	 SP8315 NB-IoT /eMTC	 OTA arm hand

3.3 The passive test parameters

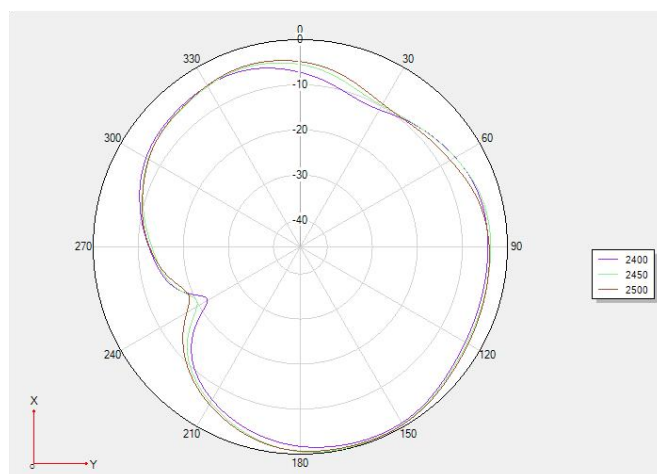
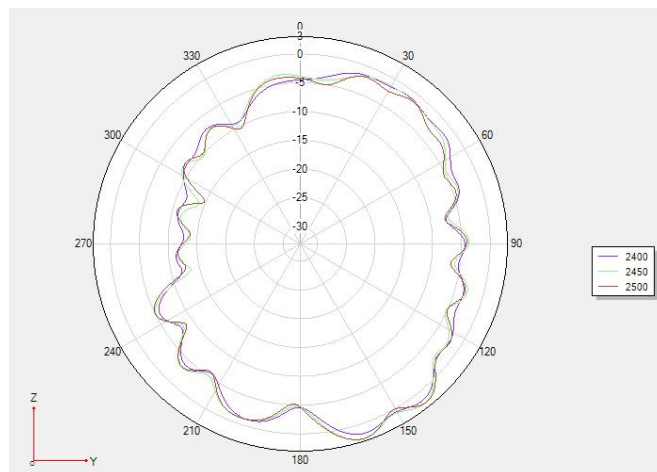
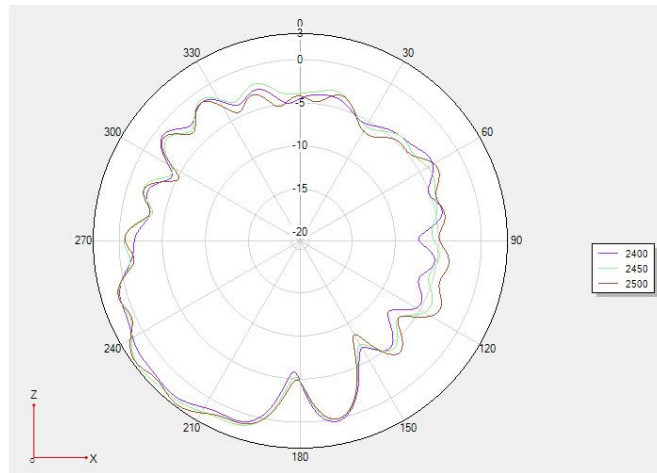
standing-wave ratio VSWR

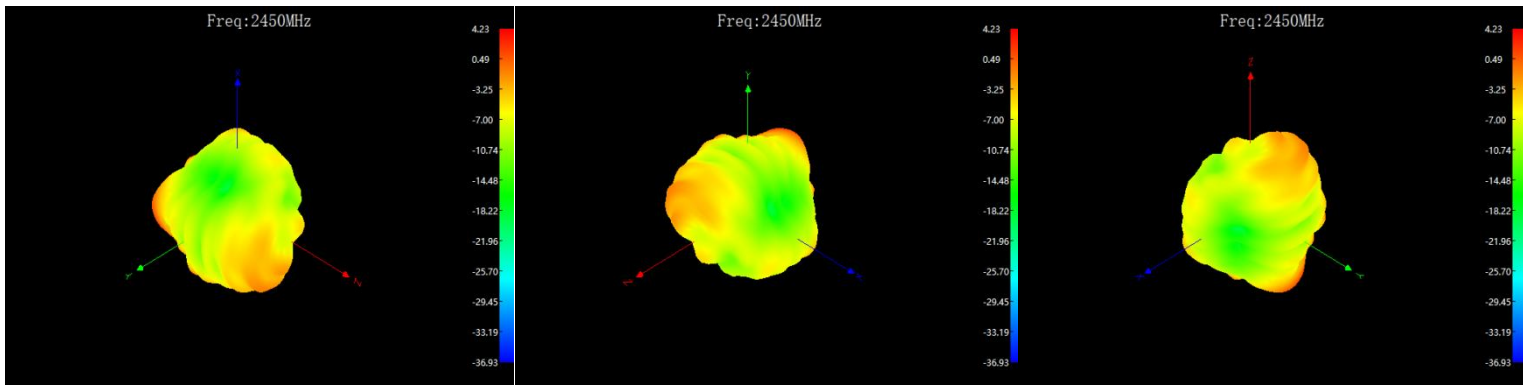


Passive efficiency

Frequency/Mhz	MaxGain/dBi	Efficiency / %
2400	3.05	44.87
2410	3.25	44.98
2420	3.19	43.15
2430	3.64	45.08
2440	3.88	46.56
2450	4.23	47.21
2460	4.16	45.39
2470	4.55	47.21
2480	4.51	48.08
2490	4.54	47.21
2500	4.25	45.39

Passive direction diagram





3.4 Active test data

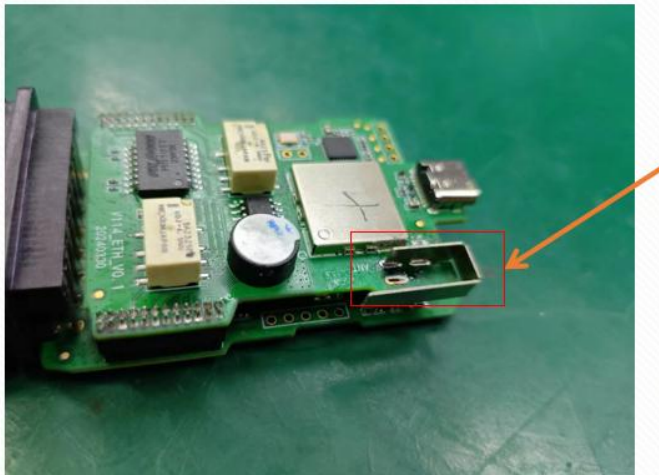
Measurement	Band	Channel	Total
TRP	WIFI_B (1M)	1	15.33
TRP	WIFI_B (1M)	7	15.28
TRP	WIFI_B (1M)	13	15.16
TIS(EIRP)	WIFI_B (11M)	13	-82.54
TRP	WIFI_G (6M)	1	15.82
TRP	WIFI_G (6M)	7	15.36
TRP	WIFI_G (6M)	13	15.26
TIS(EIRP)	WIFI_G (54M)	13	-70.13
TRP	WIFI_N_ISM (6.5M)	1	14.26
TRP	WIFI_N_ISM (6.5M)	7	14.06
TRP	WIFI_N_ISM (6.5M)	13	14.37
TIS(EIRP)	WIFI_N_ISM (65M)	13	-68.1

四、 The prototype environment processing mode

No environmental treatment was added

五、 Antenna loading position

The antenna is assembled in the following figure



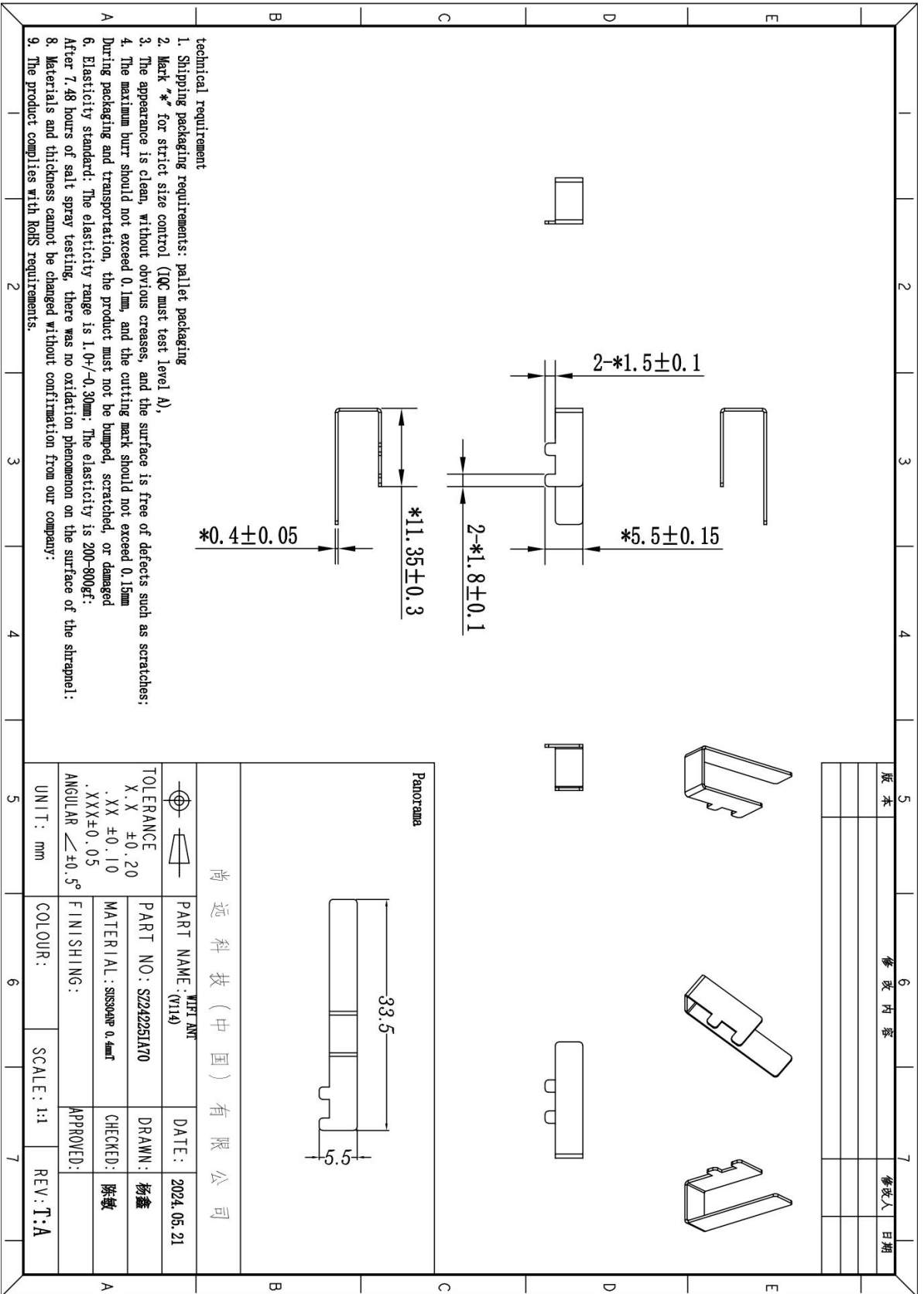
六、 Mass production antenna index

When the antenna is in mass production, the standing wave ratio is used as the test standard for mass production.

Based on the differences of the project itself, the following criteria are given:

Frequency (MHz)	Mass production standards
2400-2450MHz	VSWR (mass production performance) <VSWR (recognized performance) + 0.5

七、 schedule drawing



八、 ROHS restricted substance composition questionnaire

RoHS限用物质成分表 List of RoHS restricted substances



SALEABLE PART																		
零件料号/Part number		零件名称/型号/Part name / model			供应商料号/Supplier item number		制造商名称/Name of manufacturer											
		V114 弹片天线			SZ24225 IAT0		深圳市尚远科技有限公司											
SUB-PART																		
序号 Serial number	名称/name		料号 Item No	单件产品 使用量 /Usage of single product(g)	供应商/supplier	检测 报告 /Test report	限用物质含量PPM/Content of restricted substances ppm						控制方法 /Control method	SGS Report			备注 /re marks	
	单体 /Monomer	成分 /Component					有/yes /no	铅 /Pb	镉 /Cd	汞/Hg	六价 铬 /Cr6+	PBB		PBDE	审核SGS报告 /Review SGS report	编号/number		生效日期 /effective date
1	弹片	不锈钢 /SUS304			huaxin	有/yes no	N.D	N.D	N.D	N.D	N.D	N.D	审核SGS报告 /Review SGS report	SZNEC24000882402	2024/4/2	www.sgsgroup.com.cn	/	
2																		
3																		
4																		
5																		
6																		
7																		
8																		
9																		
10																		
11																		
12																		
13																		

制表/Tabulation: 陈小平

制表者部门/Tabulator Department: 品质部/品质工程师 Quality Department

日期/Date: 2022/09/05

九、 manner of packing

Parts packing instructions report			
customer name	Yunjia	manufacturer	SUNNYWAY
entry name	SZ24225IA70	product name	<u>antenna module</u>
Bale quantity	50 PCS * 1 <input type="checkbox"/> bundle <input checked="" type="checkbox"/> PE bag <input type="checkbox"/> disc <input type="checkbox"/> layer <input type="checkbox"/> other _____		
Moisture-proof & slow walking	<input type="checkbox"/> desiccant <input type="checkbox"/> Vacuum bag <input type="checkbox"/> Bubble pack <input type="checkbox"/> foam <input type="checkbox"/> Paper wood <input checked="" type="checkbox"/> other _____		
内包装方式及标签			<div style="border: 1px solid black; padding: 5px;"> Customer Name: Yunjia Product Name: WiFi Antenna Order number: Manufacturer code: SZ24225IA70 Customer code: Quantity: Inspector: Delivery date: __ Year __ Month __ day Precautions: moisture-proof, shockproof, pressure resistant, handle with care </div>
	50pcs / PE bag		Carton label
外包装方式示意图及标签	<div style="border: 1px solid black; padding: 5px;"> Customer Name: Yunjia Product Name: WiFi Antenna Order number: Manufacturer code: SZ24225IA70 Customer code: Quantity: Inspector: Delivery date: __ Year __ Month __ day Precautions: moisture-proof, shockproof, pressure resistant, handle with care </div>		
	Carton label		Check packaging, paste product
		manufacturer	
		XUWEI	
* The packaging picture is a schematic, does not mean that the picture is the actual product.			