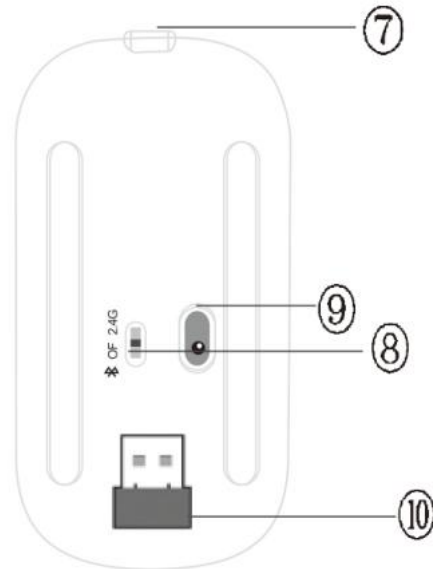
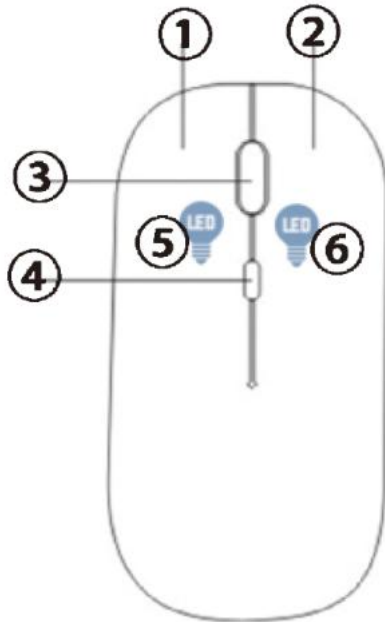


Product Features



① Left click

② Right click

③ Flip pages

④ DPI

⑤ Charging indicator led

⑥ Bluetooth Code matching LED

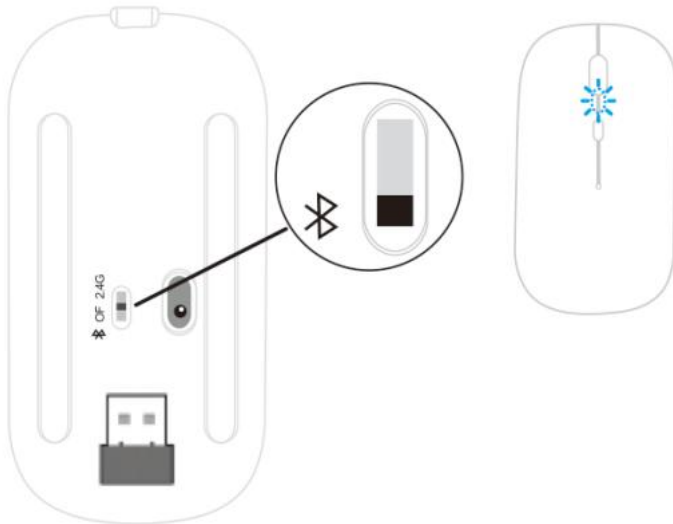
⑦ Chargingport

⑧ PowerOFF/ON

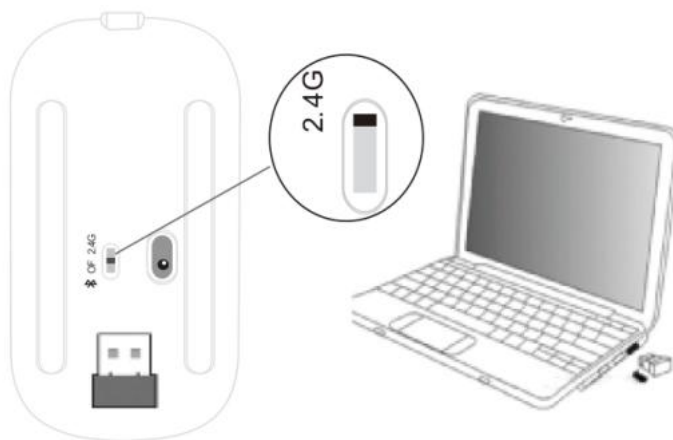
⑨ Sensors

⑩ 2.4G Receiver

Mouse connection method



1. Switch to Bluetooth tag position Code checking indicator flashing, entering code checking
2. Bluetooth mode: Turn on device Bluetooth to connect



3. 2.4G mode: Insert the receiver into the computer USB, then power on the mouse again
4. 1. Charging input voltage 5V, current<1A, fast charging prohibited
2. Mandatory code matching: After dialing the Bluetooth gear, press and hold the DPI button for 6 seconds. Alternatively, press the left button, right button, and scroll wheel simultaneously.

FCC Warning Statement: Changes or modifications to this unit not expressly approved by the party responsible for compliance could void the user's authority to operate the equipment. This equipment has been tested and found to comply with the limits for a Class B digital device, pursuant to Part 15 of the FCC Rules. These limits are designed to provide reasonable protection against harmful interference in a residential installation. This equipment generates, uses and can radiate radio frequency energy and, if not installed and used in accordance with the instructions, may cause harmful interference to radio communications.

However, there is no guarantee that interference will not occur in a particular installation. If this equipment does cause harmful interference to radio or television reception, which can be determined by turning the equipment off and on, the user is encouraged to try to correct the interference by one or more of the following measures:

- Reorient or relocate the receiving antenna.
- Increase the separation between the equipment and receiver.
- Connect the equipment into an outlet on a circuit different from that to which the receiver is connected.
- Consult the dealer or an experienced radio/TV technician for help.

This device complies with Part 15 of the FCC Rules. Operation is subject to the following two conditions: (1) this device may not cause harmful interference, and (2) this device must accept any interference received, including interference that may cause undesired operation.

FCC Radiation Exposure Statement

The device has been evaluated to meet general RF exposure requirement. The device can be used in portable exposure condition without restriction.