

70mm*100mm折页



智能点击器

JX-05pro



智能点击器说明书

按键功能说明

图1



1. 长按开机，单击开启
2. 长按调数加，单击调数减

功能使用说明4个部份

第一部份, 如图1, 产品单独使用JX 点击器手机点赞, 调整点击次数, 单击开启键, (不能打开遥控器JX-05pro, 两者会相互连接, 不能连接手机蓝牙)。如遇平台限制可慢慢速进行点击, 快手/抖音点赞使用推荐1秒4次-18次, 淘宝点赞推荐使用1秒3次-6次, 每个手机能接受的最大点击不一样, 可自由调节, 99个单位随意切换。

第二部份是JX-05pro单独开机连接蓝牙操作手机刷视频, 手机电子书翻页, 如图2功能。(JX点击器不能开机, 两者相互连接导致JX-05pro不能正常控制刷视频)

第三部份是Kindle使用, 两者打开会自动连接, JX 点击器配对后熄屏, JX点击器夹到Kindle电子书上, 使用遥控器, 每个按键单击都可点击翻页。

第四部份是, JX点击器单独连接手机蓝牙耳机使用, JX (BLE)。点击器夹到Kindle或其它电子书上, 按2号键设置好数值, 多少秒后自动点击一次(翻页), 按1号键启动。

图2



1. 长按开关机，单击暂停，双击点赞，短按拍照
2. 单击上翻页，长按加音量，短按拍照
3. 单击下翻页，长按减音量，短按拍照
4. 单击左翻页，长按返回首页
5. 单击右翻页，长按锁屏
6. 指示灯

使用说明

操作如下(手机型号: iPhone X, iOS14.8):

长按3秒1键开机, 蓝色指示灯闪烁时, 在手机蓝牙中搜索, 蓝牙设备名称: JX-05pro, 与手机蓝牙配对成功后, 进入短视频APP, 以抖音短视频APP为例: 按下①键播放或暂停视频, 双击①键给视频点赞, 按下②③④⑤键可实现视频上下左右(以实际为准)的翻动, 详情参照功能键操作。

关于苹果手机

使用苹果手机/平板时, 请注意以下几点:

1. 确保手机iOS软件为14.8以上
 2. 辅助触控功能必须打开
- iOS14.8以上版本需设置方可使用。设置如下: 设置→辅助功能→触控→辅助触控→打开, 出现圆点即可。如圆点不在拍照键上, 可调整鼠标圆点, 设置如下:



注: iOS系统用户如遇触控辅助圆点指标持续往上跳动后无法上下操作, 应调节跟踪灵敏度 从左到右调节到适应位置便可以正常使用, (执行触控手势)必须打开, 如下图



跟踪灵敏度调节滑动, 调节之后必须把辅助触控关闭再重新打开辅助触控

3. 以上2项如果确认OK, 还是不能正常使用请把手机关机再开机一次
4. 打开辅助触控后, 会出现2个点。大的圆圈是可以移动的, 小的没有办法移动的, 不刷视频时30秒消失, 安卓和鸿蒙没有这个点。
5. 苹果问题: 点击鼠标点跳动, 不能刷屏, 请把辅助触控关闭再开启就可以正常使用

放入仓内自动关机, 拿起自动开机连接。

Android版本手机蓝牙耳机即可使用, 如鼠标或圆点不在拍照键上, 可参考设置1。

提示: 如因iOS系统升级造成本产品不能使用, 属不可抗力。



微信扫描二维码进入JX-05pro视频使用教程

合格证

型号: _____

检验员: _____

出厂日期: _____



Intelligent clicker

JX-05pro



Intelligent Click User Manual

Button function description

Figure 1



1. Hold down to power on the device and click Start
2. Hold down the number plus and click the number minus

Function description 4 parts

In the first part, as shown in Figure 1, the product uses the JX clicker to like on the phone, adjust the number of clicks, and click the enable button (the remote control). JX-05pro cannot be opened, and the two will be connected to each other and cannot be connected to the phone's Bluetooth. If the platform is limited, you can click at an adjustable slow speed. Kwa/TikTok likes are recommended to be used 3 times to 6 times per second. The maximum number of clicks that each mobile phone can accept is different, which can be adjusted freely, and 99 units can be switched at will.

The second part is the JX-05pro, which is powered on separately and connected to Bluetooth to operate the mobile phone for flashing videos and flipping e-books, as shown in Figure 2. (The JX clicker cannot be turned on, and the connection between the two causes JX-05pro to not be able to control video flashing properly)

The third part is about using Kindle. The two will automatically connect when opened. The JX clicker will pair and turn off the screen. The JX clicker will be clipped onto the Kindle e-book, and using the remote control, each button can be clicked to turn pages.

The fourth part is to connect the JX clicker separately to the phone's Bluetooth for use, JX (BLE). Clip the clicker onto a Kindle or other e-book, press the 2nd key to set the value, and after a few seconds, automatically click once (page flipping), then press the 1st key to start.

Figure 2



1. Long press to turn on/off, click to pause, double-click to like, and short press to take a picture
2. Click on page up, long press to increase volume, short press to take a photo
3. Click page down, long press to

- reduce volume, short press to take a photo
4. Click to turn left and long press to return to the home page
5. Click to turn the page right and hold the lock screen
6. indicator light

Instructions for use

The operation is as follows (iPhone X, iOS14.8):

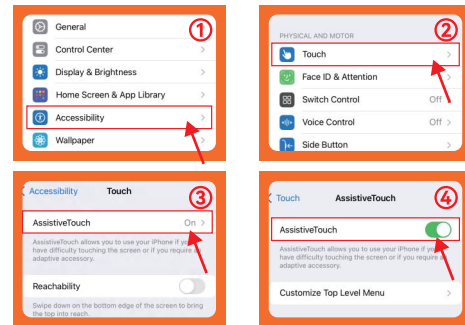
Press and hold the ① button for 3 seconds to turn on the power, when the blue indicator flashes, search in the Bluetooth of the mobile phone, the Bluetooth device name: JX-05pro, after successfully pairing with the Bluetooth of the mobile phone, enter the short video APP, take the Douyin short video APP as an example: Press the ① button to play or pause the video, double-click the ① button to like the video, and press the ②③④⑤ button to flip the video up, down, left and right (subject to the actual situation). For details, refer to the function key operation.

About iPhone

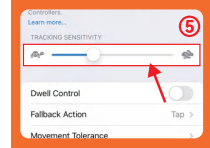
When using an iPhone/tablet, please note a few things:

1. Ensure that the iOS software of the mobile phone is 14.8 or higher
2. Auxiliary touch function must be turned on

iOS14.8 and above versions need to be set before use. The settings are as follows: Settings → Accessibility → Touch → Assistive Touch → On, and a dot appears. If the dot is not on the camera button, you can adjust the mouse dot, and the settings are as follows:



Note: If the iOS system user is unable to operate up and down after the touch assisted dot indicator continues to jump up and down, he should adjust the tracking sensitivity from left to right to the adaptive position for normal use. (Execute touch gesture) must be turned on, as shown in the following figure



Tracking sensitivity adjustment sliding, after adjustment, the auxiliary touch must be turned off and then turned on again

3. If the above two items are OK and still cannot be used normally, please turn off the phone and turn it on again
4. After opening the auxiliary touch, 2 dots will appear. The big circle can be moved, and the small one cannot be moved. It disappears in 30 seconds without brushing the video. Android and Hongmeng do not have this point.
5. Apple problem: Click the mouse to beat, can not brush the screen, please turn the auxiliary touch off and on can be used normally

Certificate of conformity

Model: _____

Inspectors: _____

Date of manufacture: _____



FCC Caution:

This device complies with part 15 of the FCC Rules. Operation is subject to the following two conditions: (1) This device may not cause harmful interference, and (2) this device must accept any interference received, including interference that may cause undesired operation. Any changes or modifications not expressly approved by the party responsible for compliance could void the user's authority to operate the equipment. NOTE: This equipment has been tested and found to comply with the limits for a Class B digital device, pursuant to Part 15 of the FCC Rules. These limits are designed to provide reasonable protection against harmful interference in a residential installation. This equipment generates, uses and can radiate radio frequency energy and, if not installed and used in accordance with the instructions, may cause harmful interference to radio communications. However, there is no guarantee that interference will not occur in a particular installation. If this equipment does cause harmful interference to radio or television reception, which can be determined by turning the equipment off and on, the user is encouraged to try to correct the interference by one or more of the following measures: -- Reorient or relocate the receiving antenna. -- Increase the separation between the equipment and receiver. -- Connect the equipment into an outlet on a circuit different from that to which the receiver is connected. -- Consult the dealer or an experienced radio/TV technician for help. The device has been evaluated to meet general RF exposure requirement. The device can be used in portable exposure condition without restriction.