

ShenZhen QiXinTongDa Technology Co.,Ltd.

Antenna Test Report

Client Name: KEYONGTAI

Project Name: SP1-4G

Frequency Band: GSM B2/3/5/8+WCDMA B2/4/

5+FDD B2/3/4/5/7/12/13/20/66/71

RF: LI HAI LONG (137 6025 5827)

2024-07-22

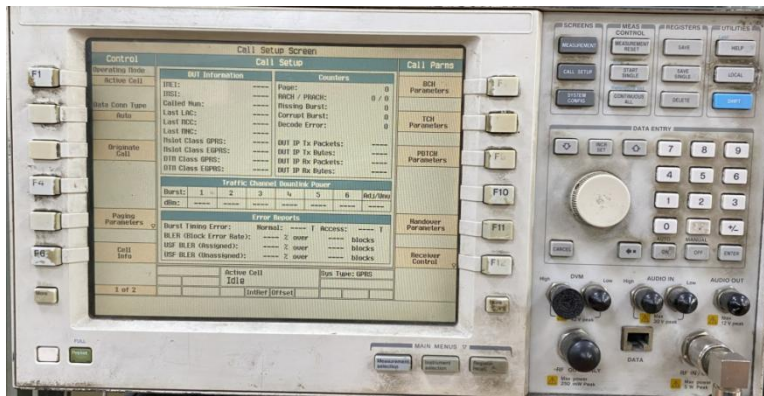
1.Test Project

	Test Project	Equipment
1. S Parameter	1. Return Loss (RL) 2. VSWR	Network Analyzer: Agilent 5071B
2. RF Test (2G+3G+4G+5G)	1. power 2. level 3. TRP/TIS	Comprehensive Test: CMW500/8960 Test Environment: Anechoic Chamber

2. Test Equipment



Agilent 5071B (S Parameter (RL/VSWR) Test Equipment)

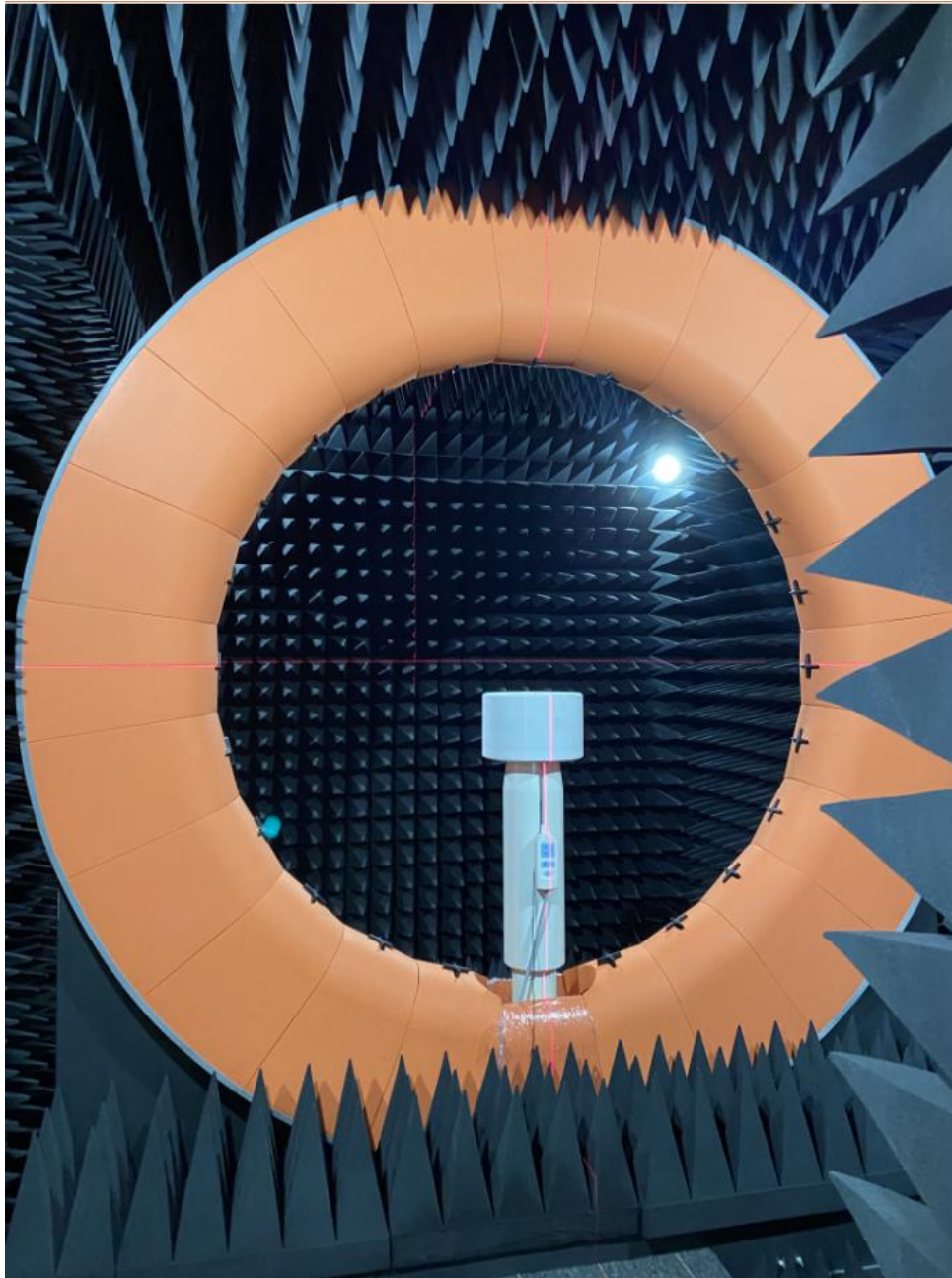


Agilent 8960 (2G/3G Test Equipment)



CMW 500 (2G/3G/4G Test Equipment)

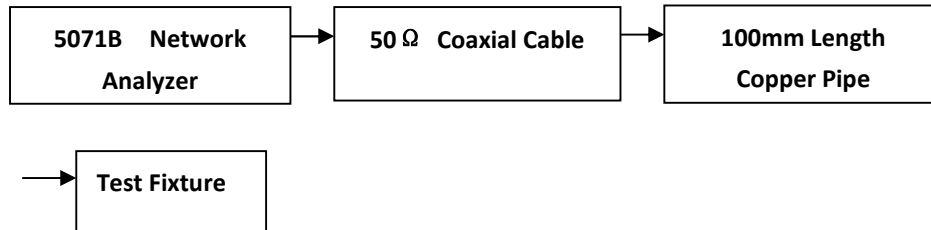
3. TestEnvironment



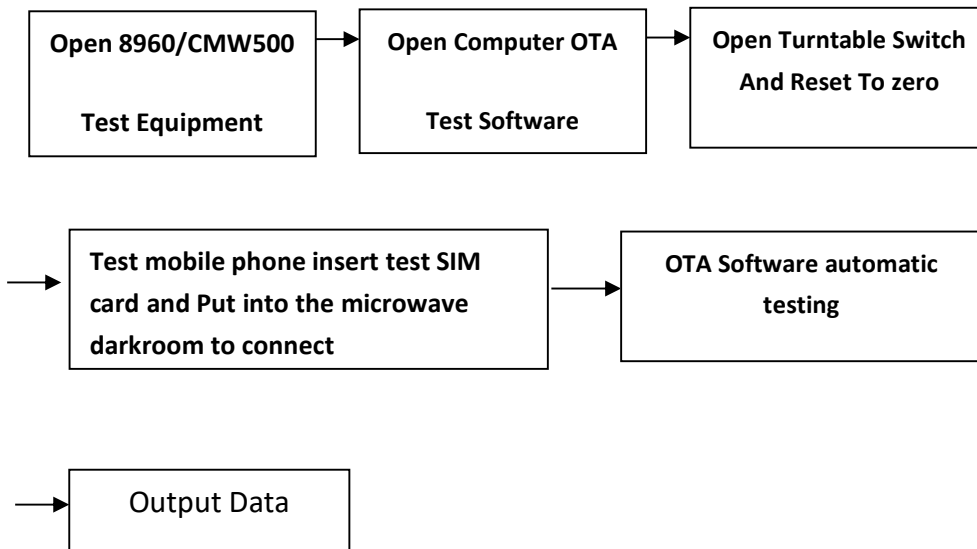
Anechoic Chamber

4. Test Steps

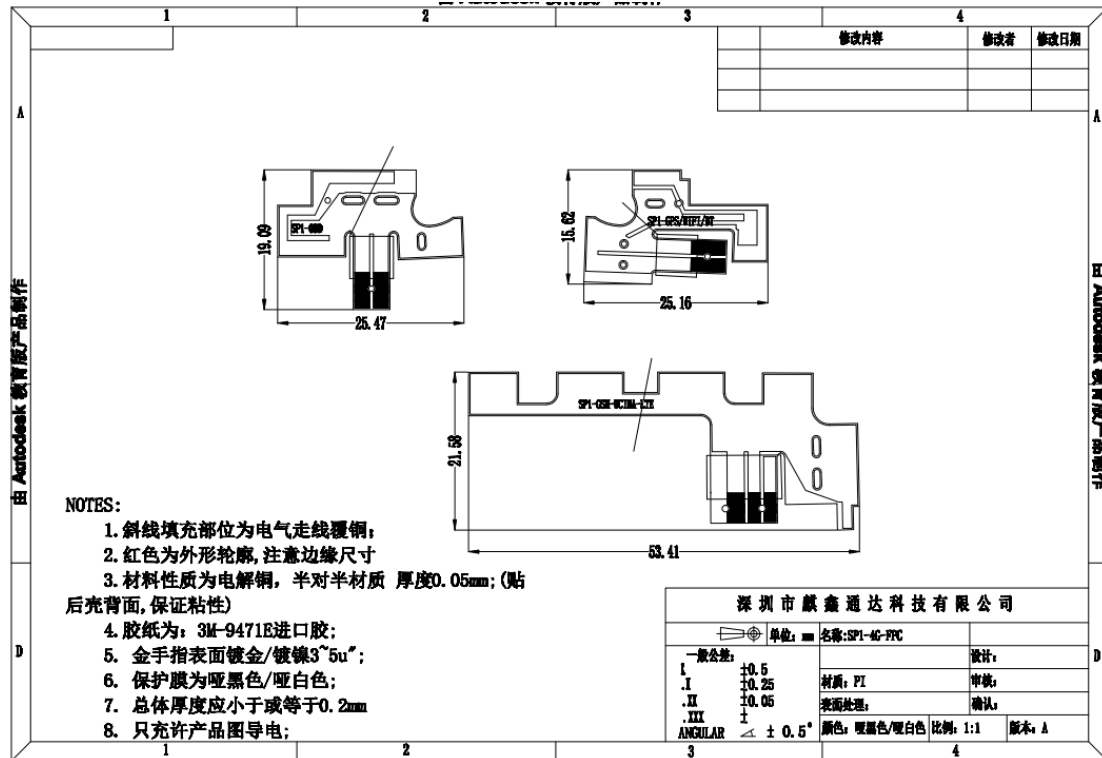
Passive VSWR/RL Test Steps:



Active TRP/TIS Test Steps:



5. Antenna Dimensions

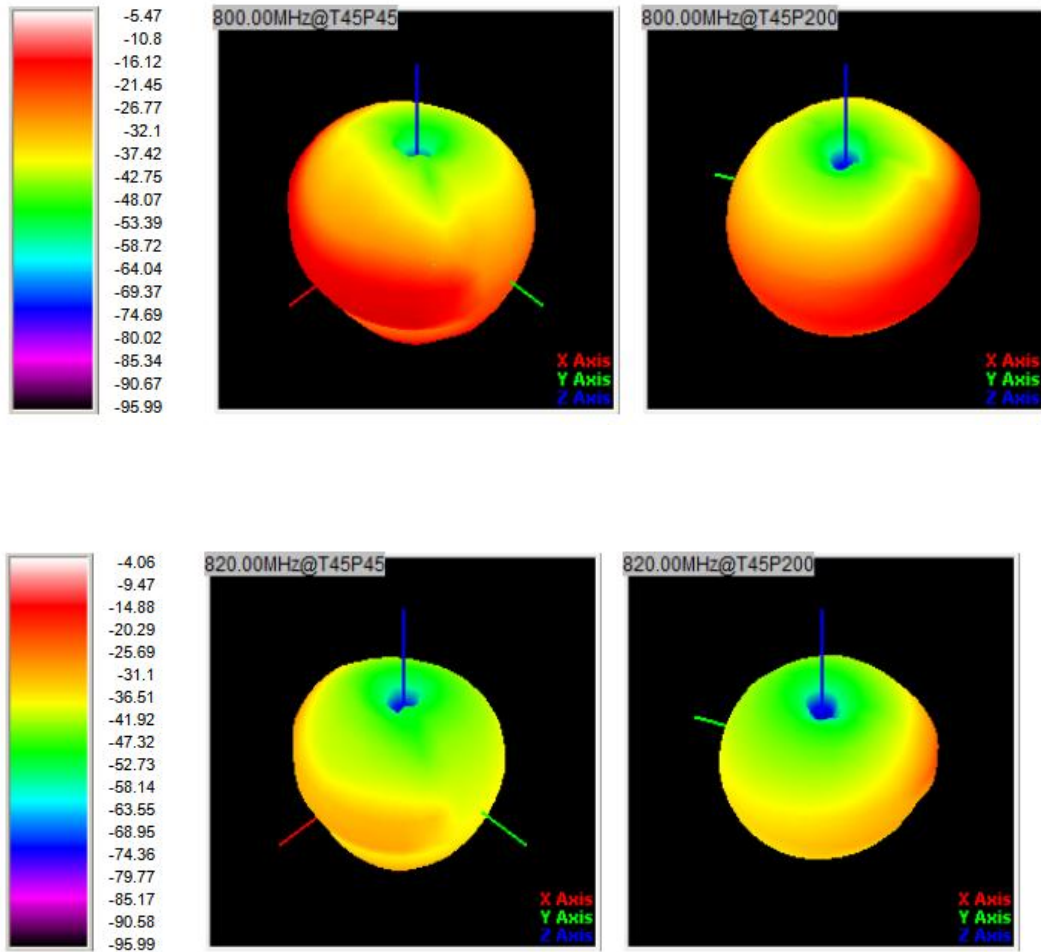


6. Antenna Gain

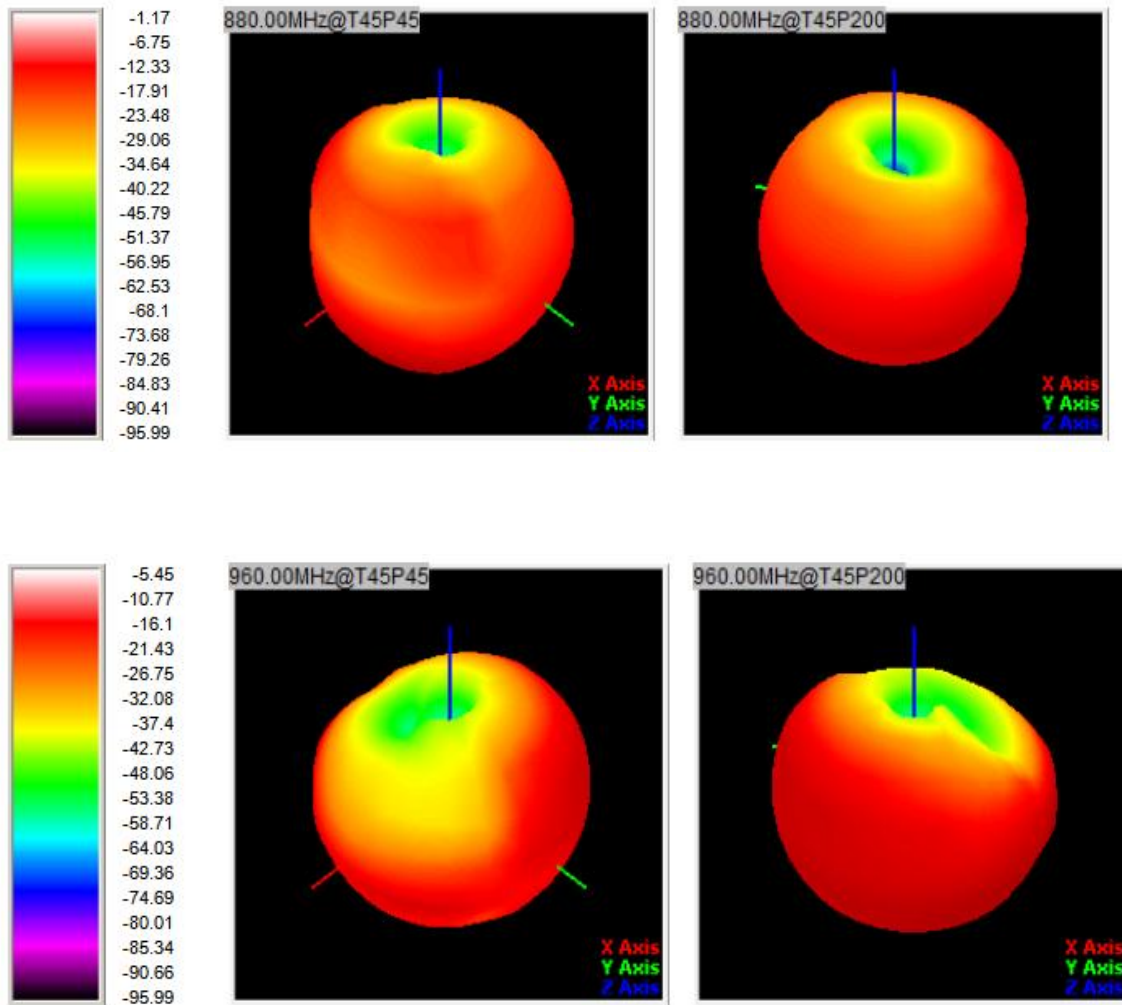
Frequency Band	Gain (dBi)
GSM850 (824-894MHz)	-2.31
GSM900 (880-960MHz)	-1.22
DCS1800 (1710-1880MHz)	0.21
PCS1900 (1850-1990MHz)	0.16
WCDMA850 (824-894MHz)	-2.32
WCDMA1700 (1710-2155MHz)	0.22
WCDMA1900 (1850-1990MHz)	0.16
FDD B 2 (1850-1990MHz)	0.16
FDD B 3 (1710-1880MHz)	0.22
FDD B 4 (1710-2155MHz)	0.23
FDD B 5 (824-894MHz)	-2.27
FDD B 7 (2500-2690MHz)	0.36

FDD B 12 (699-746MHz)	-2.48
FDD B 13 (746-787MHz)	-2.47
FDD B 20 (791-862MHz)	-2.29
FDD B 66 (1700-2200MHz)	0.24
FDD B 71 (627-673MHz)	-2.61
Bluetooth	0.29
WIFI-2.4G	0.29
GPS	0.12

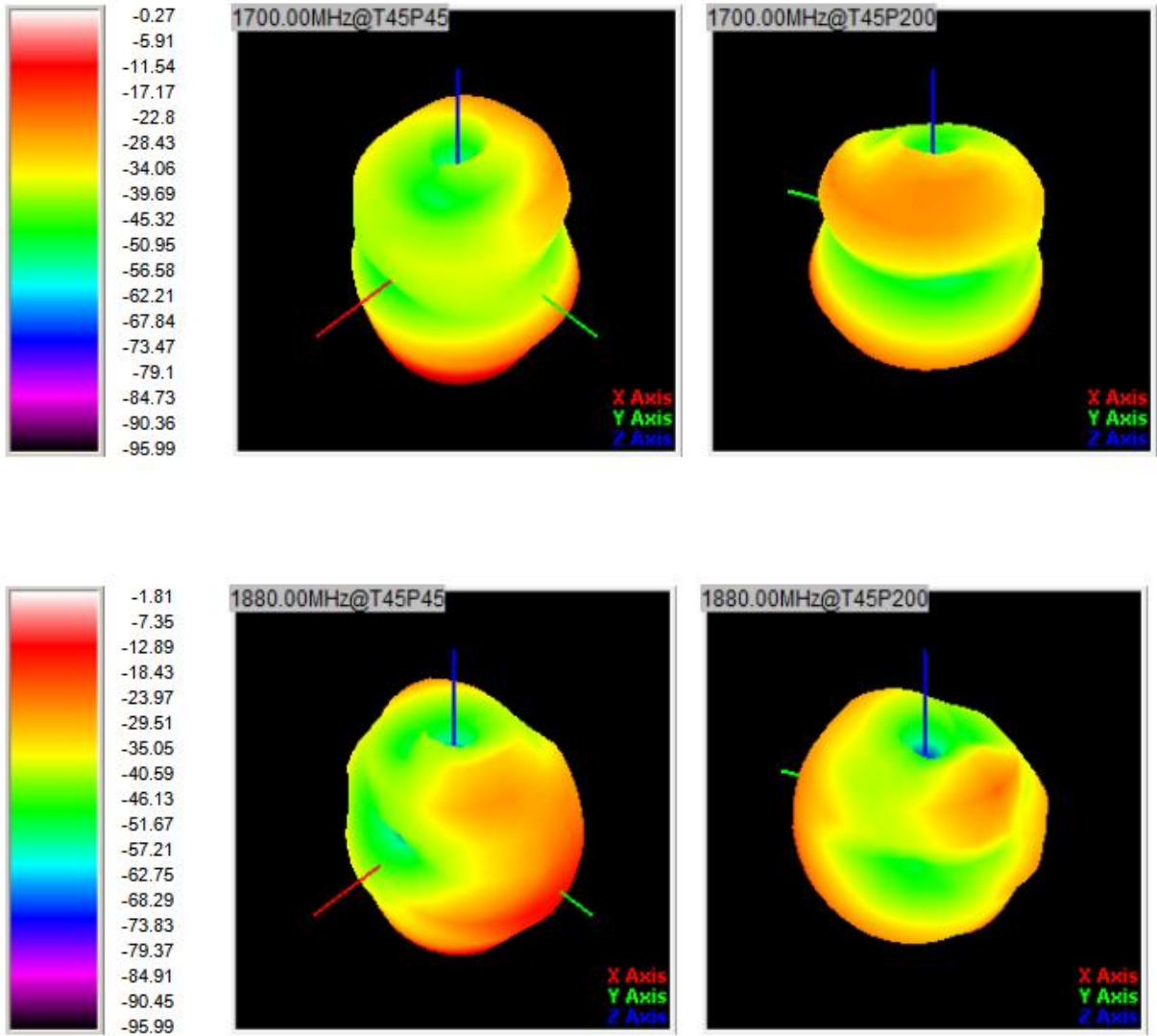
7. 3D Lobe Diagram (1)



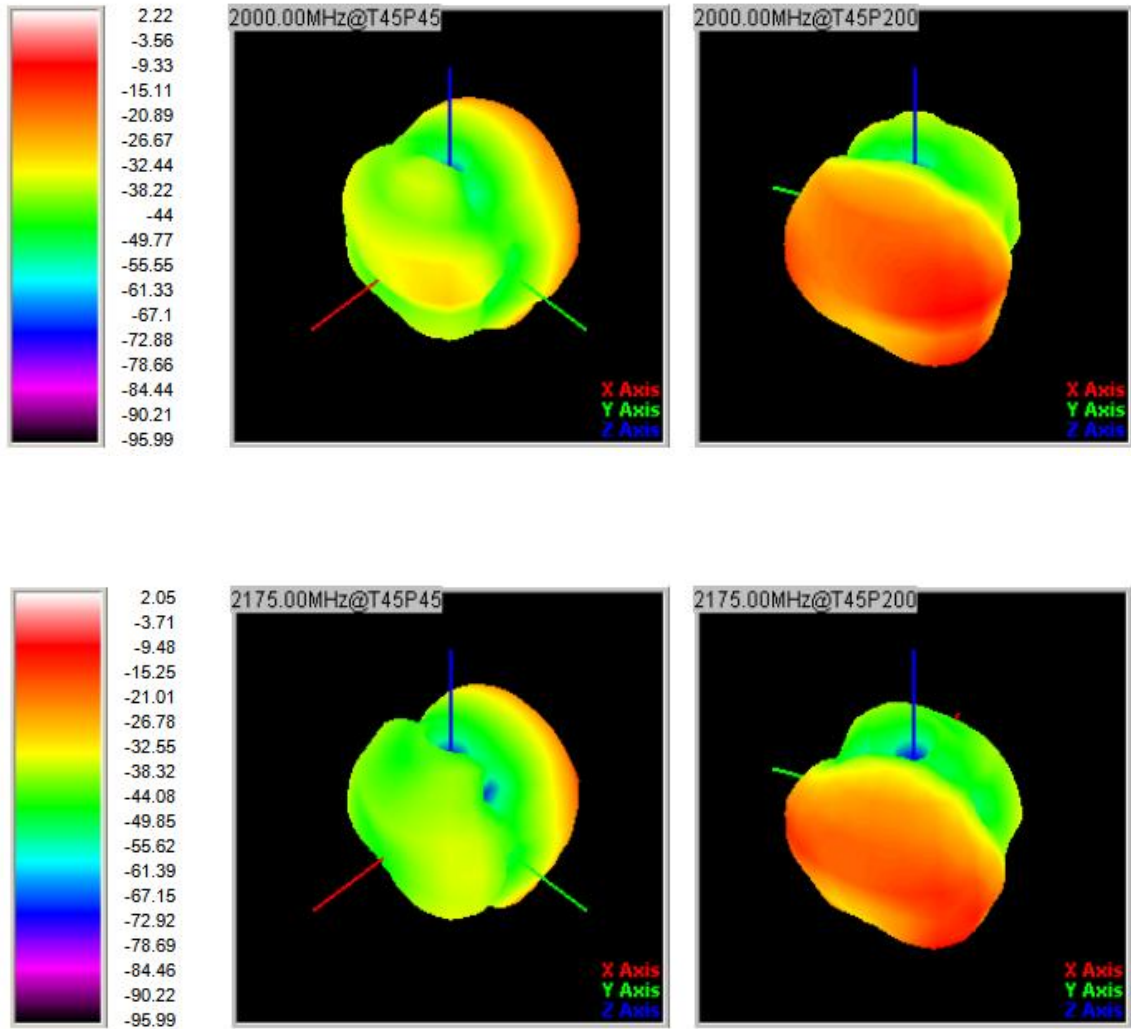
8. 3D Lobe Diagram (2)



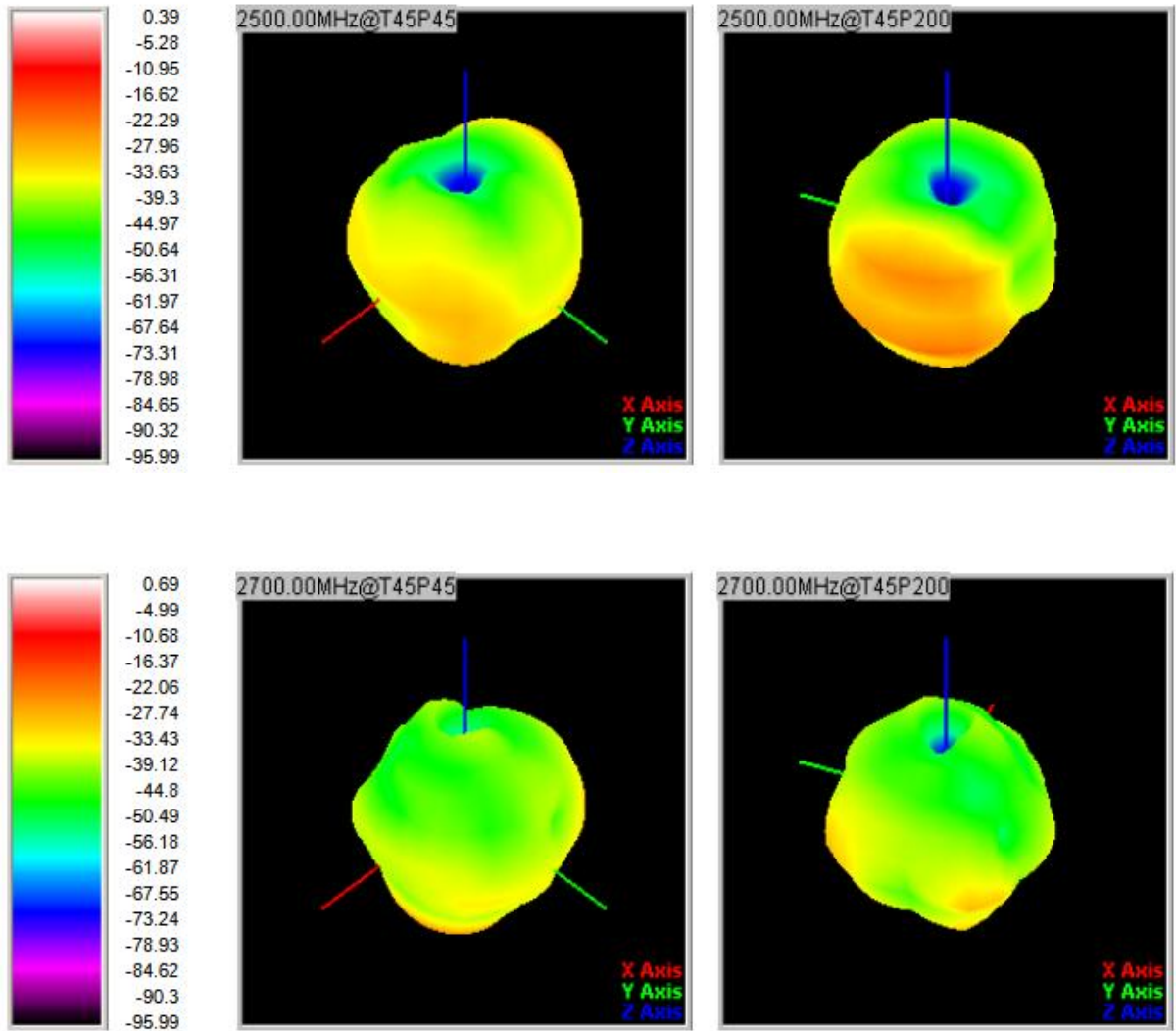
9. 3D Lobe Diagram (3)



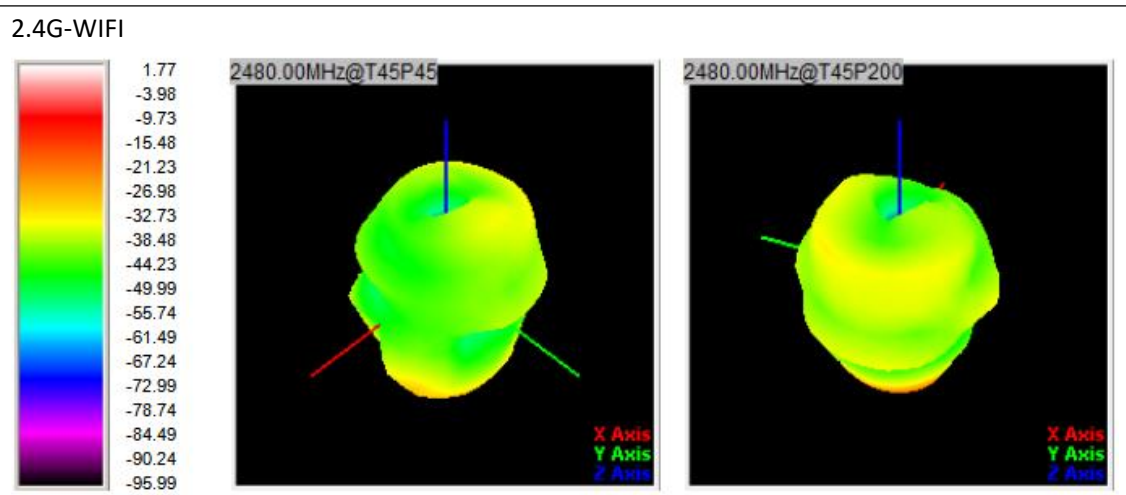
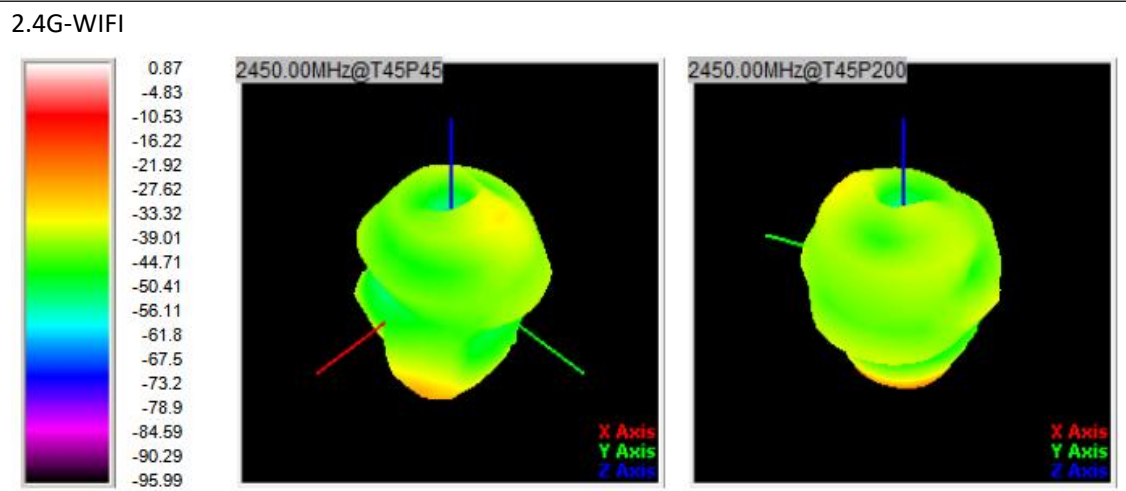
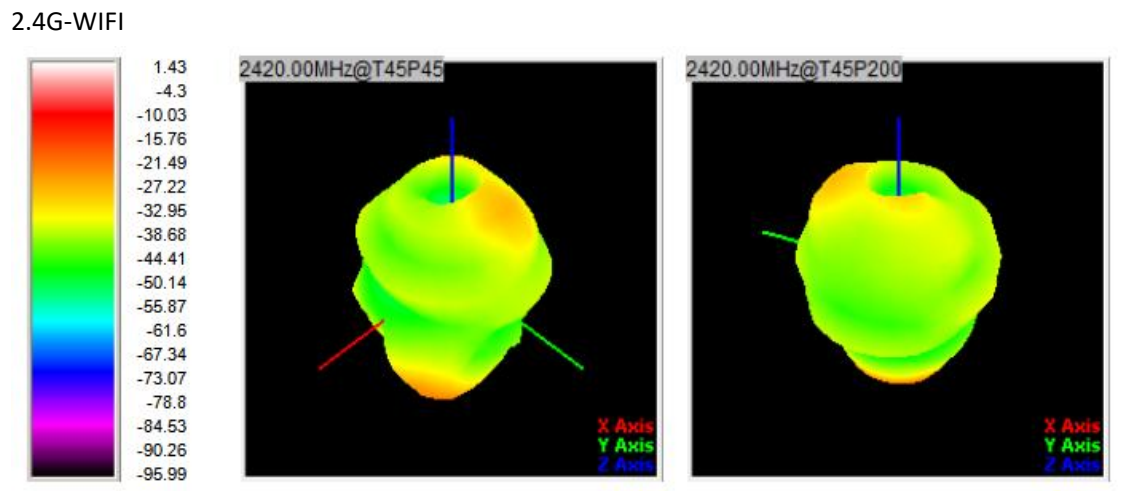
10. 3D Lobe Diagram (4)



11. 3D Lobe Diagram (5)



12. 3D Lobe Diagram (6)



GPS-L1

