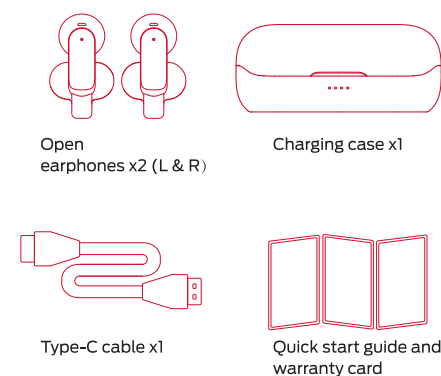


## QUICK START GUIDE

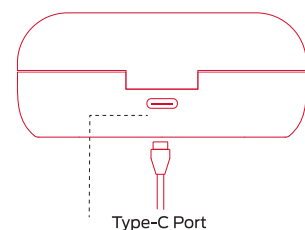
Please read this Quick Start Guide carefully and keep it for future use.

### Product Overview



### Charging

Before using the **Open AC601**, please connect the Type-C cable to a power adapter to begin charging. Fully charge the earphones and the charging case before the first use.



### Power On/Off

When taken out of the charging case, the earphones will turn on and pair with each other automatically. To turn off the earphones, put them in the charging case, then the earphones will be turned off and start charging.

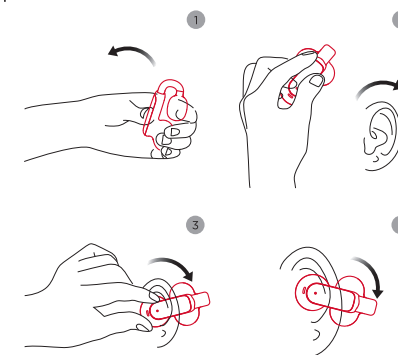
### Pairing

The earphones will turn on when taken out of the charging case.

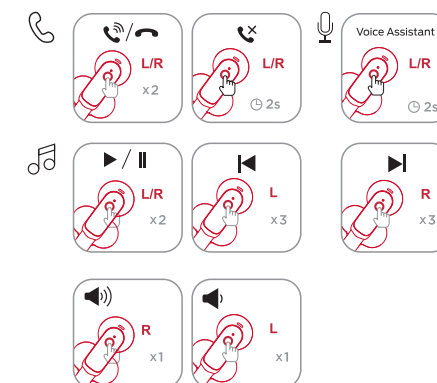
For new device connection, turn on the Bluetooth in your device and choose "**Open AC601**" from the Bluetooth list to connect. You will hear System prompts after the earphones are connected to the device. If the earphones have been connected before, they will connect to the last connected device automatically after being turned on.

### Wearing

Put the **Open AC601** onto your ears and rotate to fit comfortably to get the best wearing and sound quality experience.



### MFB Operation



### Reset

In the power on state, touch the MFB of the earphones 5 times (two earphones at the same time), and the earphones will automatically enter the pairing mode to reset.

### Additional Operation

|                                      |  |
|--------------------------------------|--|
| Answer call                          | Press L or R twice   |
| End call                             | Press L or R twice   |
| Reject call                          | Press MFB on the left or right earphone for 2 seconds  |
| <b>LED indicator (earphone)</b>      |  |
| Power on                             | The white light is on  |
| Power off                            | The red light on 2s and then turn off  |
| Pairing is successful                | The white light on 1s and then turn off  |
| Pairing timed out                    | The red light on 2s and then turn off  |
| Connection is over distance          | White flashes  |
| Disconnect the phone                 | White flashes  |
| Low battery                          | Red light flashes slowly   |
| Low power off                        | The red light on 2s and then turn off  |
| <b>LED indicator (charging case)</b> |  |
| Charging                             | White light flash slowly   |
| Full charged                         | Four white lights are light on when full charged   |
| Discharge                            | The left 1 light of the left earphone flashes slowly and goes out when it is fully charged, and the right 1 light of the right earphone flashes slowly and goes out when it is fully charged |
| Low battery                          | The first light from the left flashes 5 times  |

### Attention

\*Private replacement of batteries without permission is not recommended.  
\*Batteries [battery packs or battery combinations] should not be exposed to lighting, baking or similar overheating environments.  
\*The input voltage and current standard  $\leq 5V/1A$  when charging the headset charging compartment from an external power source;

FCC Statement  
Note: This equipment has been tested and found to comply with the limits for a Class B digital device, pursuant to part 15 of the FCC Rules. These limits are designed to provide reasonable protection against harmful interference in a residential installation. This equipment generates, uses and can radiate radio frequency energy and, if not installed and used in accordance with the instructions, may cause harmful interference to radio communications. However, there is no guarantee that interference will not occur in a particular installation. If this equipment does cause harmful interference to radio or television reception, which can be determined by turning the equipment off and on, the user is encouraged to try to correct the interference by one or more of the following measures:  
—Reorient or relocate the receiving antenna.  
—Increase the separation between the equipment and receiver.  
—Connect the equipment into an outlet on a circuit different from that to which the receiver is connected.  
—Consult the dealer or an experienced radio/TV technician for help.

This device complies with part 15 of the FCC Rules. Operation is subject to the following two conditions: (1) This device may not cause harmful interference, and (2) this device must accept any interference received, including interference that may cause undesired operation.

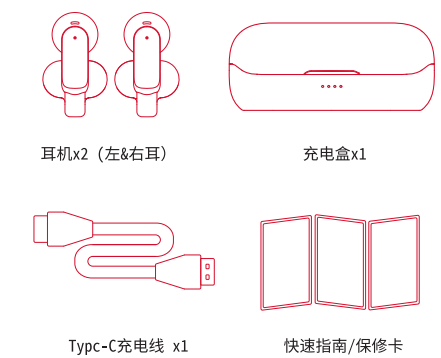
Any changes or modifications not expressly approved by the party responsible for compliance could void the user's authority to operate the equipment.

The device has evaluated to meet general RF exposure requirement. The device can be used in portable exposure without restriction.

## 快速指南

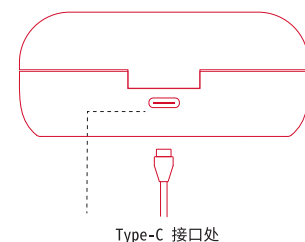
请仔细阅读本快速指南并妥善保存以备将来使用。

### 产品概述



### 充电

请在使用此设备前先给耳机和充电仓充满电，此设备可以通过Type-C USB 接口进行充电。



### 电源开、关

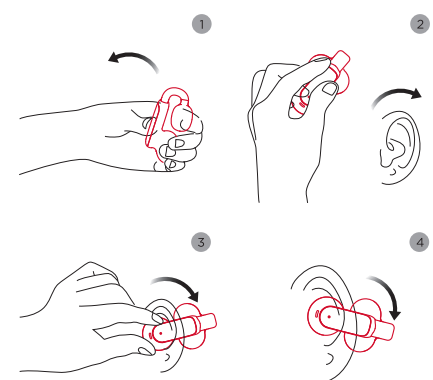
打开充电盒盖，拿出两只耳机，将自动开机。想要关闭耳机，请将耳机放入充电盒，耳机关机同时进行充电。

### 配对

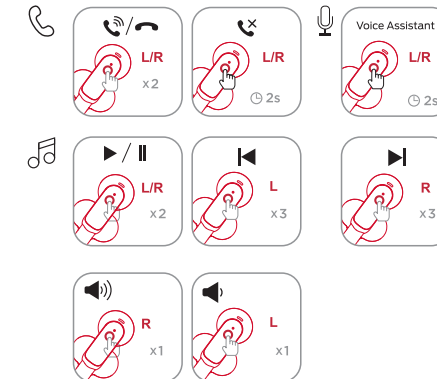
打开充电盒，拿出两只耳机，它将自动开机。对于新设备连接，请打开蓝牙设备并搜索 "**Open AC601**" 进行连接，配对成功后，您会听到系统提示音。如果耳机之前已配对过，开机就会尝试连接上一次的设备。

### 佩戴

拿出耳机，将 **Open AC601** 顺着耳后佩戴，并轻轻旋转至舒适位置，以确保获得最佳的佩戴效果和音质体验。



### 按键操作



### 恢复出厂设置

开机状态下连续5击耳机触控键（双耳同时），耳机将自动进入配对模式，恢复出厂设置。

### 更多操作

|                      |  |
|----------------------|--|
| 接听                   | 双击左或右耳                                   |
| 挂断                   | 双击左或右耳                                   |
| 拒接                   | 长按左或右耳MFB键2秒                             |
| <b>LED 指示灯 (耳机)</b>  |  |
| 开机                   | 白灯亮                                      |
| 关机                   | 红灯长亮2S熄灭                                 |
| 配对成功                 | 白灯长亮1S熄灭                                 |
| 配对超时                 | 红灯长亮2S熄灭                                 |
| 连接超距                 | 白灯快闪                                     |
| 断开手机连接               | 白灯快闪                                     |
| 低电提醒                 | 红灯慢闪                                     |
| 低电关机                 | 红灯长亮2S熄灭                                 |
| <b>LED 指示灯 (充电盒)</b> |  |
| 充电                   | 白灯慢闪                                     |
| 满电                   | 满电4个灯全亮                                  |
| 放电                   | 左耳机入仓充电对应左1灯慢闪，满电熄灭；右耳机入仓充电对应右1灯慢闪，满电熄灭； |
| 低电提醒                 | 左起第1个灯快闪5下                               |

### 注意

\*不建议未经许可私下更换电池。  
\*电池[电池组或电池组合]不得暴露在照明、烘烤或类似过热的环境中。  
\*耳机充电仓在外接电源充电时，输入电压电流标准  $\leq 5V/1A$ ;

封面

75X95MM 105G双胶+1k+1z印刷+风琴折