

4.7. Radiated Spurious Emission Measurement

Test Specification

Test Requirement:	FCC Part15 C Section 15.209					
Test Method:	ANSI C63.10: 2013					
Frequency Range:	9 kHz to 25 GHz					
Measurement Distance:	3 m					
Antenna Polarization:	Horizontal & Vertical					
Operation mode:	Transmitting mode with modulation					
Receiver Setup:	Frequency	Detector	RBW	VBW	Remark	
	9kHz- 150kHz	Quasi-peak	200Hz	1kHz	Quasi-peak Value	
	150kHz- 30MHz	Quasi-peak	9kHz	30kHz	Quasi-peak Value	
	30MHz-1GHz	Quasi-peak	120KHz	300KHz	Quasi-peak Value	
	Above 1GHz	Peak	1MHz	3MHz	Peak Value	
		Peak	1MHz	10Hz	Average Value	
Limit:	Frequency	Field Strength (microvolts/meter)	Measurement Distance (meters)			
	0.009-0.490	2400/F(KHz)	300			
	0.490-1.705	24000/F(KHz)	30			
	1.705-30	30	30			
	30-88	100	3			
	88-216	150	3			
	216-960	200	3			
	Above 960	500	3			
	Frequency	Field Strength (microvolts/meter)	Measurement Distance (meters)	Detector		
	Above 1GHz	500	3	Average		
	5000	3	Peak			
Test setup:	For radiated emissions below 30MHz					
	30MHz to 1GHz					

	<p>Above 1GHz</p>
Test Procedure:	<ol style="list-style-type: none">1. For the radiated emission test below 1GHz: The EUT was placed on a turntable with 0.8 meter above ground. The EUT was set 3 meters from the interference receiving antenna, which was mounted on the top of a variable height antenna tower. The EUT was arranged to its worst case and then tune the antenna tower (from 1 m to 4 m) and turntable (from 0 degree to 360 degrees) to find the maximum reading. A pre-amp and a high PASS filter are used for the test in order to get better signal level.2. For the radiated emission test above 1GHz: Place the measurement antenna on a turntable with 1.5 meter above ground, which is away from each area of the EUT determined to be a source of emissions at the specified measurement distance, while keeping the measurement antenna aimed at the source of emissions at each frequency of significant emissions, with polarization oriented for maximum response. The measurement antenna may have to be higher or lower than the EUT, depending on the radiation pattern of the emission and staying aimed at the emission source for receiving the maximum signal.



	<p>The final measurement antenna elevation shall be that which maximizes the emissions. The measurement antenna elevation for maximum emissions shall be restricted to a range of heights of from 1 m to 4 m above the ground or reference ground plane.</p> <p>3. Corrected Reading: Antenna Factor + Cable Loss + Read Level - Preamp Factor = Level</p> <p>4. For measurement below 1GHz, If the emission level of the EUT measured by the peak detector is 3 dB lower than the applicable limit, the peak emission level will be reported. Otherwise, the emission measurement will be repeated using the quasi-peak detector and reported.</p> <p>5. Use the following spectrum analyzer settings:</p> <p>(1) Span shall wide enough to fully capture the emission being measured;</p> <p>(2) Set RBW=120 kHz for $f < 1$ GHz; VBW \geq RBW; Sweep = auto; Detector function = peak; Trace = max hold;</p> <p>(3) Set RBW = 1 MHz, VBW= 3MHz for $f > 1$ GHz for peak measurement.</p> <p>6. For average measurement: VBW = 10 Hz, when duty cycle is no less than 98 percent. VBW $\geq 1/T$, when duty cycle is less than 98 percent where T is the minimum transmission duration over which the transmitter is on and is transmitting at its maximum power control level for the tested mode of operation.</p>
Test results:	PASS



Test Instruments

Radiated Emission Test Site (966)					
Name of Equipment	Manufacturer	Model	Serial Number	Calibration Date	Calibration Due
Receiver	R&S	ESR-7	HKE-010	Feb. 20, 2024	Feb. 19, 2025
Spectrum analyzer	Agilent	N9020A	HKE-048	Feb. 20, 2024	Feb. 19, 2025
Spectrum analyzer	R&S	FSP40	HKE-025	Feb. 20, 2024	Feb. 19, 2025
High gain antenna	Schwarzbeck	LB-180400KF	HKE-054	Feb. 21, 2024	Feb. 20, 2026
Preamplifier	Schwarzbeck	BBV 9743	HKE-006	Feb. 20, 2024	Feb. 19, 2025
Preamplifier	EMCI	EMC051845S E	HKE-015	Feb. 20, 2024	Feb. 19, 2025
Preamplifier	Agilent	83051A	HKE-016	Feb. 20, 2024	Feb. 19, 2025
Loop antenna	Schwarzbeck	FMZB 1519 B	HKE-014	Feb. 21, 2024	Feb. 20, 2026
Broadband antenna	Schwarzbeck	VULB 9163	HKE-012	Feb. 21, 2024	Feb. 20, 2026
Horn antenna	Schwarzbeck	9120D	HKE-013	Feb. 21, 2024	Feb. 20, 2026
High pass filter unit	Tonscend	JS0806-F	HKE-055	Feb. 20, 2024	Feb. 19, 2025
Antenna Mast	Keleto	CC-A-4M	N/A	N/A	N/A
Position controller	Taiwan MF	MF7802	HKE-011	Feb. 20, 2024	Feb. 19, 2025
Radiated test software	Tonscend	TS+ Rev 2.5.0.0	HKE-082	N/A	N/A
RF cable	Times	9kHz-1GHz	HKE-117	Feb. 20, 2024	Feb. 19, 2025
RF cable	Times	1-40G	HKE-034	Feb. 20, 2024	Feb. 19, 2025
Horn Antenna	Schwarzbeck	BBHA 9170	HKE-017	Feb. 21, 2024	Feb. 20, 2026
RSE Test Software	Tonscend	JS36-RSE 5.0.0	HKE-184	/	/

Note: The calibration interval of the above test instruments is 12 months and the calibrations are traceable to international system unit (SI).



Test Data

All the test modes completed for test. only the worst result of (802.11b at 2412MHz) was reported as below:

Below 1GHz

Horizontal

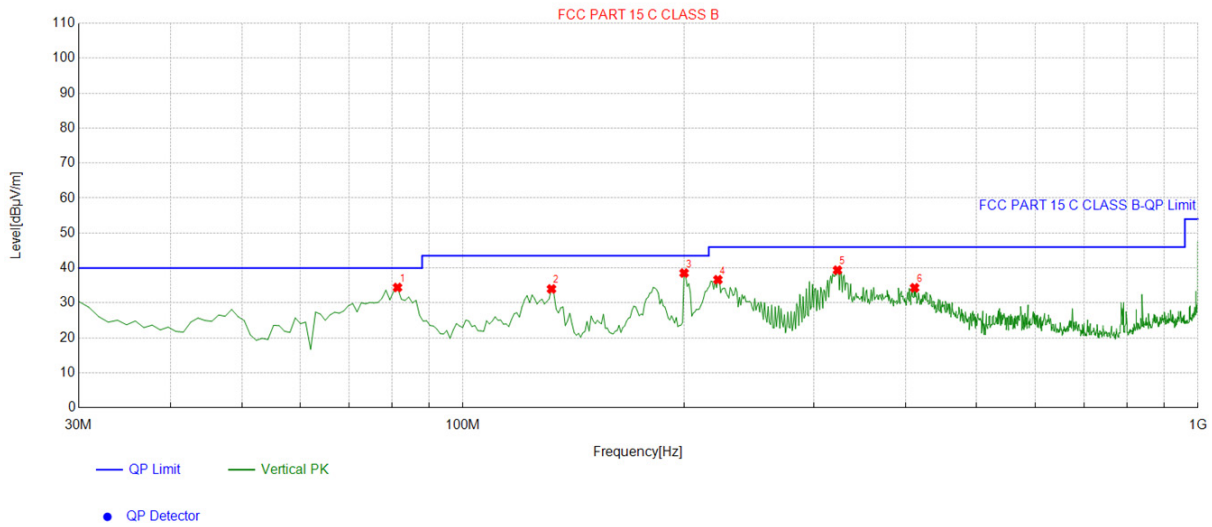


Suspected List									
NO.	Freq. [MHz]	Factor [dB]	Reading [dBµV/m]	Level [dBµV/m]	Limit [dBµV/m]	Margin [dB]	Height [cm]	Angle [°]	Polarity
1	124.18418	-16.66	54.36	37.70	43.50	5.80	100	208	Horizontal
2	183.41341	-15.63	53.44	37.81	43.50	5.69	100	62	Horizontal
3	227.10710	-13.92	52.71	38.79	46.00	7.21	100	98	Horizontal
4	333.91391	-10.67	51.51	40.84	46.00	5.16	100	247	Horizontal
5	599.95996	-5.33	33.08	27.75	46.00	18.25	100	360	Horizontal
6	792.21221	-3.25	37.03	33.78	46.00	12.22	100	181	Horizontal

Remark: Factor = Cable loss + Antenna factor + Attenuator – Pre-amplifier; Level = Reading + Factor; Margin = Limit – Level;



Vertical



Suspected List									
NO.	Freq. [MHz]	Factor [dB]	Reading [dBµV/m]	Level [dBµV/m]	Limit [dBµV/m]	Margin [dB]	Height [cm]	Angle [°]	Polarity
1	81.461461	-18.34	52.76	34.42	40.00	5.58	100	71	Vertical
2	131.95195	-17.33	51.33	34.00	43.50	9.50	100	260	Vertical
3	199.91992	-15.09	53.63	38.54	43.50	4.96	100	38	Vertical
4	222.25225	-14.27	50.92	36.65	46.00	9.35	100	235	Vertical
5	323.23323	-11.07	50.45	39.38	46.00	6.62	100	79	Vertical
6	411.59159	-9.50	43.83	34.33	46.00	11.67	100	327	Vertical

Remark: Factor = Cable loss + Antenna factor + Attenuator – Preamplifier; Level = Reading + Factor; Margin = Limit – Level;

Harmonics and Spurious Emissions

Frequency Range (9kHz-30MHz)

Frequency (MHz)	Level@3m (dBµV/m)	Limit@3m (dBµV/m)
--	--	--
--	--	--
--	--	--
--	--	--

- Note:1. Emission Level=Reading+ Cable loss-Antenna factor-Amp factor.
- 2. The emission levels are 20 dB below the limit value, which are not reported. It is deemed to comply with the requirement.



Above 1GHz

Radiated Emission Test

LOW CH1 (802.11b Mode)/2412

Horizontal:

Frequency (MHz)	Reading Result (dBµV)	Factor (dB)	Emission Level (dBµV/m)	Limits (dBµV/m)	Margin (dB)	Detector Type
4824	52.81	-3.64	49.17	74	-24.83	peak
4824	41.09	-3.64	37.45	54	-16.55	AVG
7236	51.27	-0.95	50.32	74	-23.68	peak
7236	38.16	-0.95	37.21	54	-16.79	AVG

Remark: Factor = Cable loss + Antenna factor + Attenuator – Preamplifier; Level = Reading + Factor; Margin = Level-Limit

Vertical:

Frequency (MHz)	Reading Result (dBµV)	Factor (dB)	Emission Level (dBµV/m)	Limits (dBµV/m)	Margin (dB)	Detector Type
4824	53.07	-3.64	49.43	74	-24.57	peak
4824	41.04	-3.64	37.4	54	-16.6	AVG
7236	49.99	-0.95	49.04	74	-24.96	peak
7236	40.89	-0.95	39.94	54	-14.06	AVG

Remark: Factor = Cable loss + Antenna factor + Attenuator – Preamplifier; Level = Reading + Factor; Margin = Level-Limit



MID CH6 (802.11b Mode)/2437

Horizontal:

Frequency (MHz)	Reading Result (dBμV)	Factor (dB)	Emission Level (dBμV/m)	Limits (dBμV/m)	Margin (dB)	Detector Type
4874	52.44	-3.51	48.93	74	-25.07	peak
4874	42.26	-3.51	38.75	54	-15.25	AVG
7311	48.18	-0.82	47.36	74	-26.64	peak
7311	40.13	-0.82	39.31	54	-14.69	AVG

Remark: Factor = Cable loss + Antenna factor + Attenuator – Preamplifier; Level = Reading + Factor; Margin = Level-Limit

Vertical:

Frequency (MHz)	Reading Result (dBμV)	Factor (dB)	Emission Level (dBμV/m)	Limits (dBμV/m)	Margin (dB)	Detector Type
4874	52.52	-3.51	49.01	74	-24.99	peak
4874	41.25	-3.51	37.74	54	-16.26	AVG
7311	51.64	-0.82	50.82	74	-23.18	peak
7311	39.21	-0.82	38.39	54	-15.61	AVG

Remark: Factor = Cable loss + Antenna factor + Attenuator – Preamplifier; Level = Reading + Factor; Margin = Level-Limit



HIGH CH11 (802.11b Mode)/2462

Horizontal:

Frequency (MHz)	Reading Result (dBμV)	Factor (dB)	Emission Level (dBμV/m)	Limits (dBμV/m)	Margin (dB)	Detector Type
4924	53.28	-3.43	49.85	74	-24.15	peak
4924	40.75	-3.43	37.32	54	-16.68	AVG
7386	49.32	-0.75	48.57	74	-25.43	peak
7386	40.66	-0.75	39.91	54	-14.09	AVG

Remark: Factor = Cable loss + Antenna factor + Attenuator – Preamplifier; Level = Reading + Factor; Margin = Level-Limit

Vertical:

Frequency (MHz)	Reading Result (dBμV)	Factor (dB)	Emission Level (dBμV/m)	Limits (dBμV/m)	Margin (dB)	Detector Type
4924	52.82	-3.43	49.39	74	-24.61	peak
4924	39.46	-3.43	36.03	54	-17.97	AVG
7386	50.98	-0.75	50.23	74	-23.77	peak
7386	38.72	-0.75	37.97	54	-16.03	AVG

Remark: Factor = Cable loss + Antenna factor + Attenuator – Preamplifier; Level = Reading + Factor; Margin = Level-Limit

Remark:

- (1) Measuring frequencies from 1 GHz to the 25 GHz.
- (2) "F" denotes fundamental frequency; "H" denotes spurious frequency; "E" denotes band edge frequency.
- (3) * denotes emission frequency which appearing within the Restricted Bands specified in provision of 15.205, then the general radiated emission limits in 15.209 apply.
- (4) The emissions are attenuated more than 20dB below the permissible limits are not recorded in the report.
- (5) The IF bandwidth of EMI Test Receiver between 30MHz to 1GHz was 120KHz, 1 MHz for measuring above 1 GHz, below 30MHz was 10KHz.
- (6) When the test results of Peak Detected below the limits of Average Detected, the Average Detected is not need completed. For example: Top Channel at Fundamental73.16dBuV/m(PK Value) <93.98(AV Limit), at harmonic 53.20 dBuV/m(PK Value) <54dBuV/m(AV Limit), the Average Detected not need to completed.



LOW CH1 (802.11g Mode)/2412

Horizontal:

Frequency (MHz)	Reading Result (dBμV)	Factor (dB)	Emission Level (dBμV/m)	Limits (dBμV/m)	Margin (dB)	Detector Type
4824	51.74	-3.64	48.1	74	-25.9	peak
4824	43.45	-3.64	39.81	54	-14.19	AVG
7236	50.76	-0.95	49.81	74	-24.19	peak
7236	38.46	-0.95	37.51	54	-16.49	AVG

Remark: Factor = Cable loss + Antenna factor + Attenuator – Preamplifier; Level = Reading + Factor; Margin = Level-Limit

Vertical:

Frequency (MHz)	Reading Result (dBμV)	Factor (dB)	Emission Level (dBμV/m)	Limits (dBμV/m)	Margin (dB)	Detector Type
4824	51.91	-3.64	48.27	74	-25.73	peak
4824	40.91	-3.64	37.27	54	-16.73	AVG
7236	49.56	-0.95	48.61	74	-25.39	peak
7236	38.45	-0.95	37.5	54	-16.5	AVG

Remark: Factor = Cable loss + Antenna factor + Attenuator – Preamplifier; Level = Reading + Factor; Margin = Level-Limit



MID CH6 (802.11g Mode)/2437

Horizontal:

Frequency (MHz)	Reading Result (dBμV)	Factor (dB)	Emission Level (dBμV/m)	Limits (dBμV/m)	Margin (dB)	Detector Type
4874	52.91	-3.51	49.4	74	-24.6	peak
4874	40.47	-3.51	36.96	54	-17.04	AVG
7311	48.37	-0.82	47.55	74	-26.45	peak
7311	38.27	-0.82	37.45	54	-16.55	AVG

Remark: Factor = Cable loss + Antenna factor + Attenuator – Preamplifier; Level = Reading + Factor; Margin = Level-Limit

Vertical:

Frequency (MHz)	Reading Result (dBμV)	Factor (dB)	Emission Level (dBμV/m)	Limits (dBμV/m)	Margin (dB)	Detector Type
4874	53.31	-3.51	49.8	74	-24.2	peak
4874	44.34	-3.51	40.83	54	-13.17	AVG
7311	48.69	-0.82	47.87	74	-26.13	peak
7311	40.64	-0.82	39.82	54	-14.18	AVG

Remark: Factor = Cable loss + Antenna factor + Attenuator – Preamplifier; Level = Reading + Factor; Margin = Level-Limit



HIGH CH11 (802.11g Mode)/2462

Horizontal:

Frequency (MHz)	Reading Result (dBμV)	Factor (dB)	Emission Level (dBμV/m)	Limits (dBμV/m)	Margin (dB)	Detector Type
4924	51.14	-3.43	47.71	74	-26.29	peak
4924	42.09	-3.43	38.66	54	-15.34	AVG
7386	51.62	-0.75	50.87	74	-23.13	peak
7386	40.85	-0.75	40.1	54	-13.9	AVG

Remark: Factor = Cable loss + Antenna factor + Attenuator – Preamplifier; Level = Reading + Factor; Margin = Level-Limit

Vertical:

Frequency (MHz)	Reading Result (dBμV)	Factor (dB)	Emission Level (dBμV/m)	Limits (dBμV/m)	Margin (dB)	Detector Type
4924	52.77	-3.43	49.34	74	-24.66	peak
4924	42.17	-3.43	38.74	54	-15.26	AVG
7386	49.77	-0.75	49.02	74	-24.98	peak
7386	40.02	-0.75	39.27	54	-14.73	AVG

Remark: Factor = Cable loss + Antenna factor + Attenuator – Preamplifier; Level = Reading + Factor; Margin = Level-Limit

Remark:

- (1) Measuring frequencies from 1 GHz to the 25 GHz.
- (2) "F" denotes fundamental frequency; "H" denotes spurious frequency; "E" denotes band edge frequency.
- (3) * denotes emission frequency which appearing within the Restricted Bands specified in provision of 15.205, then the general radiated emission limits in 15.209 apply.
- (4) The emissions are attenuated more than 20dB below the permissible limits are not recorded in the report.
- (5) The IF bandwidth of EMI Test Receiver between 30MHz to 1GHz was 120KHz, 1 MHz for measuring above 1 GHz, below 30MHz was 10KHz.
- (6) When the test results of Peak Detected below the limits of Average Detected, the Average Detected is not need completed. For example: Top Channel at Fundamental73.16dBuV/m(PK Value) <93.98(AV Limit), at harmonic 53.20 dBuV/m(PK Value) <54dBuV/m(AV Limit), the Average Detected not need to completed.



LOW CH1 (802.11n/H20 Mode)/2412

Horizontal:

Frequency (MHz)	Reading Result (dBμV)	Factor (dB)	Emission Level (dBμV/m)	Limits (dBμV/m)	Margin (dB)	Detector Type
4824	52.56	-3.64	48.92	74	-25.08	peak
4824	43.59	-3.64	39.95	54	-14.05	AVG
7236	52.03	-0.95	51.08	74	-22.92	peak
7236	40.58	-0.95	39.63	54	-14.37	AVG

Remark: Factor = Cable loss + Antenna factor + Attenuator – Preamplifier; Level = Reading + Factor; Margin = Level-Limit

Vertical:

Frequency (MHz)	Reading Result (dBμV)	Factor (dB)	Emission Level (dBμV/m)	Limits (dBμV/m)	Margin (dB)	Detector Type
4824	51.01	-3.64	47.37	74	-26.63	peak
4824	38.27	-3.64	34.63	54	-19.37	AVG
7236	48.79	-0.95	47.84	74	-26.16	peak
7236	37.94	-0.95	36.99	54	-17.01	AVG

Remark: Factor = Cable loss + Antenna factor + Attenuator – Preamplifier; Level = Reading + Factor; Margin = Level-Limit



MID CH6 (802.11n/H20 Mode)/2437

Horizontal:

Frequency	Reading Result	Factor	Emission Level	Limits	Margin	Detector Type
(MHz)	(dBμV)	(dB)	(dBμV/m)	(dBμV/m)	(dB)	
4874	52.20	-3.51	48.69	74.00	-25.31	peak
4874	42.08	-3.51	38.57	54.00	-15.43	AVG
7311	47.23	-0.82	46.41	74.00	-27.59	peak
7311	41.13	-0.82	40.31	54.00	-13.69	AVG

Remark: Factor = Cable loss + Antenna factor + Attenuator – Preamplifier; Level = Reading + Factor; Margin = Level-Limit

Vertical:

Frequency	Reading Result	Factor	Emission Level	Limits	Margin	Detector Type
(MHz)	(dBμV)	(dB)	(dBμV/m)	(dBμV/m)	(dB)	
4874	49.26	-3.51	45.75	74.00	-28.25	peak
4874	44.07	-3.51	40.56	54.00	-13.44	AVG
7311	50.01	-0.82	49.19	74.00	-24.81	peak
7311	37.42	-0.82	36.60	54.00	-17.40	AVG

Remark: Factor = Cable loss + Antenna factor + Attenuator – Preamplifier; Level = Reading + Factor; Margin = Level-Limit



HIGH CH11 (802.11n/H20 Mode)/2462

Horizontal:

Frequency (MHz)	Reading Result (dBµV)	Factor (dB)	Emission Level (dBµV/m)	Limits (dBµV/m)	Margin (dB)	Detector Type
4924	51.87	-3.43	48.44	74	-25.56	peak
4924	41.47	-3.43	38.04	54	-15.96	AVG
7386	51.41	-0.75	50.66	74	-23.34	peak
7386	41.07	-0.75	40.32	54	-13.68	AVG

Remark: Factor = Cable loss + Antenna factor + Attenuator – Preamplifier; Level = Reading + Factor; Margin = Level-Limit

Vertical:

Frequency (MHz)	Reading Result (dBµV)	Factor (dB)	Emission Level (dBµV/m)	Limits (dBµV/m)	Margin (dB)	Detector Type
4924	53.24	-3.43	49.81	74	-24.19	peak
4924	41.53	-3.43	38.1	54	-15.9	AVG
7386	51.95	-0.75	51.2	74	-22.8	peak
7386	37.76	-0.75	37.01	54	-16.99	AVG

Remark: Factor = Cable loss + Antenna factor + Attenuator – Preampifier; Level = Reading + Factor; Margin = Level-Limit



LOW CH3 (802.11n/H40 Mode)/2422

Horizontal:

Frequency	Meter Reading	Factor	Emission Level	Limits	Margin	Detector Type
(MHz)	(dBμV)	(dB)	(dBμV/m)	(dBμV/m)	(dB)	
4844	51.01	-3.63	47.38	74	-26.62	peak
4844	42.46	-3.63	38.83	54	-15.17	AVG
7266	49.85	-0.94	48.91	74	-25.09	peak
7266	40.72	-0.94	39.78	54	-14.22	AVG

Remark: Factor = Cable loss + Antenna factor + Attenuator – Preamplifier; Level = Reading + Factor; Margin = Level-Limit.

Vertical:

Frequency	Meter Reading	Factor	Emission Level	Limits	Margin	Detector Type
(MHz)	(dBμV)	(dB)	(dBμV/m)	(dBμV/m)	(dB)	
4844	53.83	-3.63	50.2	74	-23.8	peak
4844	41.28	-3.63	37.65	54	-16.35	AVG
7266	49.24	-0.94	48.3	74	-25.7	peak
7266	40.37	-0.94	39.43	54	-14.57	AVG

Remark: Factor = Cable loss + Antenna factor + Attenuator – Preamplifier; Level = Reading + Factor; Margin = Level-Limit.



MID CH6 (802.11n/H40 Mode)/2437

Horizontal:

Frequency	Meter Reading	Factor	Emission Level	Limits	Margin	Detector Type
(MHz)	(dBμV)	(dB)	(dBμV/m)	(dBμV/m)	(dB)	
4874	51.54	-3.51	48.03	74	-25.97	peak
4874	42.29	-3.51	38.78	54	-15.22	AVG
7311	51.84	-0.82	51.02	74	-22.98	peak
7311	39.87	-0.82	39.05	54	-14.95	AVG

Remark: Factor = Cable loss + Antenna factor + Attenuator – Pre-amplifier; Level = Reading + Factor; Margin = Level-Limit.

Vertical:

Frequency	Meter Reading	Factor	Emission Level	Limits	Margin	Detector Type
(MHz)	(dBμV)	(dB)	(dBμV/m)	(dBμV/m)	(dB)	
4874	50.21	-3.51	46.7	74	-27.3	peak
4874	41.73	-3.51	38.22	54	-15.78	AVG
7311	48.02	-0.82	47.2	74	-26.8	peak
7311	40.06	-0.82	39.24	54	-14.76	AVG

Remark: Factor = Cable loss + Antenna factor + Attenuator – Pre-amplifier; Level = Reading + Factor; Margin = Level-Limit.



HIGH CH9 (802.11n/H40 Mode)/2452

Horizontal:

Frequency (MHz)	Meter Reading (dBμV)	Factor (dB)	Emission Level (dBμV/m)	Limits (dBμV/m)	Margin (dB)	Detector Type
4904	52.23	-3.43	48.8	74	-25.2	peak
4904	40.80	-3.43	37.37	54	-16.63	AVG
7356	50.34	-0.75	49.59	74	-24.41	peak
7356	37.91	-0.75	37.16	54	-16.84	AVG

Remark: Factor = Cable loss + Antenna factor + Attenuator – Preamplifier; Level = Reading + Factor; Margin = Level-Limit.

Vertical:

Frequency (MHz)	Meter Reading (dBμV)	Factor (dB)	Emission Level (dBμV/m)	Limits (dBμV/m)	Margin (dB)	Detector Type
4904	51.41	-3.43	47.98	74	-26.02	peak
4904	41.18	-3.43	37.75	54	-16.25	AVG
7356	50.59	-0.75	49.84	74	-24.16	peak
7356	41.23	-0.75	40.48	54	-13.52	AVG

Remark: Factor = Cable loss + Antenna factor + Attenuator – Preamplifier; Level = Reading + Factor; Margin = Level-Limit.

Remark:

- (1) Measuring frequencies from 1 GHz to the 25 GHz.
- (2) "F" denotes fundamental frequency; "H" denotes spurious frequency; "E" denotes band edge frequency.
- (3) * denotes emission frequency which appearing within the Restricted Bands specified in provision of 15.205, then the general radiated emission limits in 15.209 apply.
- (4) The emissions are attenuated more than 20dB below the permissible limits are not recorded in the report.
- (5) The IF bandwidth of EMI Test Receiver between 30MHz to 1GHz was 120KHz, 1 MHz for measuring above 1 GHz, below 30MHz was 10KHz.
- (6) When the test results of Peak Detected below the limits of Average Detected, the Average Detected is not need completed. For example: Top Channel at Fundamental 73.16dBuV/m(PK Value) <93.98(AV Limit), at harmonic 53.20 dBuV/m(PK Value) <54 dBuV/m(AV Limit), the Average Detected not need to completed.



Test Result of Radiated Spurious at Band edges

Operation Mode:

802.11b Mode TX CH Low (2412MHz)

Horizontal

Frequency (MHz)	Reading Result (dBµV)	Factor (dB)	Emission Level (dBµV/m)	Limits (dBµV/m)	Margin (dB)	Detector Type
2310.00	50.66	-5.81	44.85	74	-29.15	peak
2310.00	40.46	-5.81	34.65	54	-19.35	AVG
2390.00	49.69	-5.84	43.85	74	-30.15	peak
2390.00	39.61	-5.84	33.77	54	-20.23	AVG

Remark: Factor = Cable loss + Antenna factor + Attenuator – Preamplifier; Level = Reading + Factor; Margin = Level-Limit

Vertical:

Frequency (MHz)	Reading Result (dBµV)	Factor (dB)	Emission Level (dBµV/m)	Limits (dBµV/m)	Margin (dB)	Detector Type
2310.00	51.12	-5.81	45.31	74	-28.69	peak
2310.00	43.53	-5.81	37.72	54	-16.28	AVG
2390.00	50.47	-5.84	44.63	74	-29.37	peak
2390.00	37.24	-5.84	31.4	54	-22.6	AVG

Remark: Factor = Cable loss + Antenna factor + Attenuator – Preamplifier; Level = Reading + Factor; Margin = Level-Limit



Operation Mode: TX CH High (2462MHz)

Horizontal

Frequency (MHz)	Reading Result (dBμV)	Factor (dB)	Emission Level (dBμV/m)	Limits (dBμV/m)	Margin (dB)	Detector Type
2483.50	52.33	-5.81	46.52	74	-27.48	peak
2483.50	40.17	-5.81	34.36	54	-19.64	AVG
2500.00	51.52	-6.06	45.46	74	-28.54	peak
2500.00	38.29	-6.06	32.23	54	-21.77	AVG

Remark: Factor = Cable loss + Antenna factor + Attenuator – Preamplifier; Level = Reading + Factor; Margin = Level-Limit

Vertical:

Frequency (MHz)	Reading Result (dBμV)	Factor (dB)	Emission Level (dBμV/m)	Limits (dBμV/m)	Margin (dB)	Detector Type
2483.50	54.32	-5.81	48.51	74	-25.49	peak
2483.50	42.28	-5.81	36.47	54	-17.53	AVG
2500.00	50.19	-6.06	44.13	74	-29.87	peak
2500.00	40.33	-6.06	34.27	54	-19.73	AVG

Remark: Factor = Cable loss + Antenna factor + Attenuator – Preamplifier; Level = Reading + Factor; Margin = Level-Limit

Remark: All the other emissions not reported were too low to read and deemed to comply with FCC limit.



Operation Mode: 802.11g Mode TX CH Low (2412MHz)

Horizontal

Frequency	Reading Result	Factor	Emission Level	Limits	Margin	Detector Type
(MHz)	(dBμV)	(dB)	(dBμV/m)	(dBμV/m)	(dB)	
2310.00	48.74	-5.81	42.93	74	-31.07	peak
2310.00	42.42	-5.81	36.61	54	-17.39	AVG
2390.00	47.39	-5.84	41.55	74	-32.45	peak
2390.00	39.44	-5.84	33.6	54	-20.4	AVG

Remark: Factor = Cable loss + Antenna factor + Attenuator – Preamplifier; Level = Reading + Factor; Margin = Level-Limit

Vertical:

Frequency	Reading Result	Factor	Emission Level	Limits	Margin	Detector Type
(MHz)	(dBμV)	(dB)	(dBμV/m)	(dBμV/m)	(dB)	
2310.00	52.26	-5.81	46.45	74	-27.55	peak
2310.00	44.51	-5.81	38.7	54	-15.3	AVG
2390.00	52.12	-5.84	46.28	74	-27.72	peak
2390.00	41.08	-5.84	35.24	54	-18.76	AVG

Remark: Factor = Cable loss + Antenna factor + Attenuator – Preamplifier; Level = Reading + Factor; Margin = Level-Limit



Operation Mode: TX CH High (2462MHz)

Horizontal

Frequency	Reading Result	Factor	Emission Level	Limits	Margin	Detector Type
(MHz)	(dBµV)	(dB)	(dBµV/m)	(dBµV/m)	(dB)	
2483.50	52.52	-5.65	46.87	74	-27.13	peak
2483.50	42.19	-5.65	36.54	54	-17.46	AVG
2500.00	48.68	-5.65	43.03	74	-30.97	peak
2500.00	38.21	-5.65	32.56	54	-21.44	AVG

Remark: Factor = Cable loss + Antenna factor + Attenuator – Preamplifier; Level = Reading + Factor; Margin = Level-Limit

Vertical:

Frequency	Reading Result	Factor	Emission Level	Limits	Margin	Detector Type
(MHz)	(dBµV)	(dB)	(dBµV/m)	(dBµV/m)	(dB)	
2483.50	51.49	-5.65	45.84	74	-28.16	peak
2483.50	41.47	-5.65	35.82	54	-18.18	AVG
2500.00	52.92	-5.65	47.27	74	-26.73	peak
2500.00	40.42	-5.65	34.77	54	-19.23	AVG

Remark: Factor = Cable loss + Antenna factor + Attenuator – Preamplifier; Level = Reading + Factor; Margin = Level-Limit

Remark: All the other emissions not reported were too low to read and deemed to comply with FCC limit.



Operation Mode: 802.11n/H20 Mode TX CH Low (2412MHz)

Horizontal

Frequency	Reading Result	Factor	Emission Level	Limits	Margin	Detector Type
(MHz)	(dBµV)	(dB)	(dBµV/m)	(dBµV/m)	(dB)	
2310.00	51.32	-5.81	45.51	74	-28.49	peak
2310.00	43.23	-5.81	37.42	54	-16.58	AVG
2390.00	49.16	-5.84	43.32	74	-30.68	peak
2390.00	40.11	-5.84	34.27	54	-19.73	AVG

Remark: Factor = Cable loss + Antenna factor + Attenuator – Preamplifier; Level = Reading + Factor; Margin = Level-Limit

Vertical:

Frequency	Reading Result	Factor	Emission Level	Limits	Margin	Detector Type
(MHz)	(dBµV)	(dB)	(dBµV/m)	(dBµV/m)	(dB)	
2310.00	54.39	-5.81	48.58	74	-25.42	peak
2310.00	42.58	-5.81	36.77	54	-17.23	AVG
2390.00	50.11	-5.84	44.27	74	-29.73	peak
2390.00	39.87	-5.84	34.03	54	-19.97	AVG

Remark: Factor = Cable loss + Antenna factor + Attenuator – Preamplifier; Level = Reading + Factor; Margin = Level-Limit



Operation Mode: TX CH High (2462MHz)

Horizontal

Frequency	Reading Result	Factor	Emission Level	Limits	Margin	Detector Type
(MHz)	(dBμV)	(dB)	(dBμV/m)	(dBμV/m)	(dB)	
2483.50	54.75	-5.65	49.1	74	-24.9	peak
2483.50	40.94	-5.65	35.29	54	-18.71	AVG
2500.00	49.97	-5.65	44.32	74	-29.68	peak
2500.00	39.88	-5.65	34.23	54	-19.77	AVG

Remark: Factor = Cable loss + Antenna factor + Attenuator – Preamplifier; Level = Reading + Factor; Margin = Level-Limit

Vertical:

Frequency	Reading Result	Factor	Emission Level	Limits	Margin	Detector Type
(MHz)	(dBμV)	(dB)	(dBμV/m)	(dBμV/m)	(dB)	
2483.50	52.71	-5.65	47.06	74	-26.94	peak
2483.50	40.65	-5.65	35	54	-19	AVG
2500.00	47.38	-5.65	41.73	74	-32.27	peak
2500.00	38.31	-5.65	32.66	54	-21.34	AVG

Remark: Factor = Cable loss + Antenna factor + Attenuator – Preamplifier; Level = Reading + Factor; Margin = Level-Limit

Remark: All the other emissions not reported were too low to read and deemed to comply with FCC limit.



Operation Mode: 802.11n/H40 Mode TX CH Low (2422MHz)

Horizontal

Frequency	Reading Result	Factor	Emission Level	Limits	Margin	Detector Type
(MHz)	(dBμV)	(dB)	(dBμV/m)	(dBμV/m)	(dB)	
2310.00	54.12	-5.81	48.31	74	-25.69	peak
2310.00	/	-5.81	/	54	/	AVG
2390.00	51.81	-5.84	45.97	74	-28.03	peak
2390.00	/	-5.84	/	54	/	AVG

Remark: Factor = Cable loss + Antenna factor + Attenuator – Preamplifier; Level = Reading + Factor; Margin = Level-Limit

Vertical:

Frequency	Reading Result	Factor	Emission Level	Limits	Margin	Detector Type
(MHz)	(dBμV)	(dB)	(dBμV/m)	(dBμV/m)	(dB)	
2310.00	56.62	-5.81	50.81	74	-23.19	peak
2310.00	/	-5.81	/	54	/	AVG
2390.00	56.62	-5.84	50.78	74	-23.22	peak
2390.00	/	-5.84	/	54	/	AVG

Remark: Factor = Cable loss + Antenna factor + Attenuator – Preamplifier; Level = Reading + Factor; Margin = Level-Limit



Operation Mode: TX CH High (2452MHz)

Horizontal

Frequency	Reading Result	Factor	Emission Level	Limits	Margin	Detector Type
(MHz)	(dBµV)	(dB)	(dBµV/m)	(dBµV/m)	(dB)	
2483.50	53.17	-5.65	47.52	74	-26.48	peak
2483.50	/	-5.65	/	54	/	AVG
2500.00	51.03	-5.65	45.38	74	-28.62	peak
2500.00	/	-5.65	/	54	/	AVG

Remark: Factor = Cable loss + Antenna factor + Attenuator – Preamplifier; Level = Reading + Factor; Margin = Level-Limit

Vertical:

Frequency	Reading Result	Factor	Emission Level	Limits	Margin	Detector Type
(MHz)	(dBµV)	(dB)	(dBµV/m)	(dBµV/m)	(dB)	
2483.50	52.41	-5.65	46.76	74	-27.24	peak
2483.50	/	-5.65	/	54	/	AVG
2500.00	57.21	-5.65	51.56	74	-22.44	peak
2500.00	/	-5.65	/	54	/	AVG

Remark: Factor = Cable loss + Antenna factor + Attenuator – Preamplifier; Level = Reading + Factor; Margin = Level-Limit

Remark: All the other emissions not reported were too low to read and deemed to comply with FCC limit.

Remark:

1. If the PK measured levels comply with average limit, then the average level were deemed to comply with average limit.
2. In restricted bands of operation, the spurious emissions below the permissible value more than 20dB.
3. The amplitude of spurious emissions which are attenuated by more than 20dB below the permissible value has no need to be reported.

4.8. Antenna Requirement

Standard Applicable

For intentional device, according to FCC 47 CFR Section 15.203, an intentional radiator shall be designed to ensure that no antenna other than that furnished by the responsible party shall be used with the device. And according to FCC 47 CFR Section 15.247, if transmitting antennas of directional gain greater than 6dBi are used, the power shall be reduced by the amount in dB that the directional gain of the antenna exceeds 6dBi.

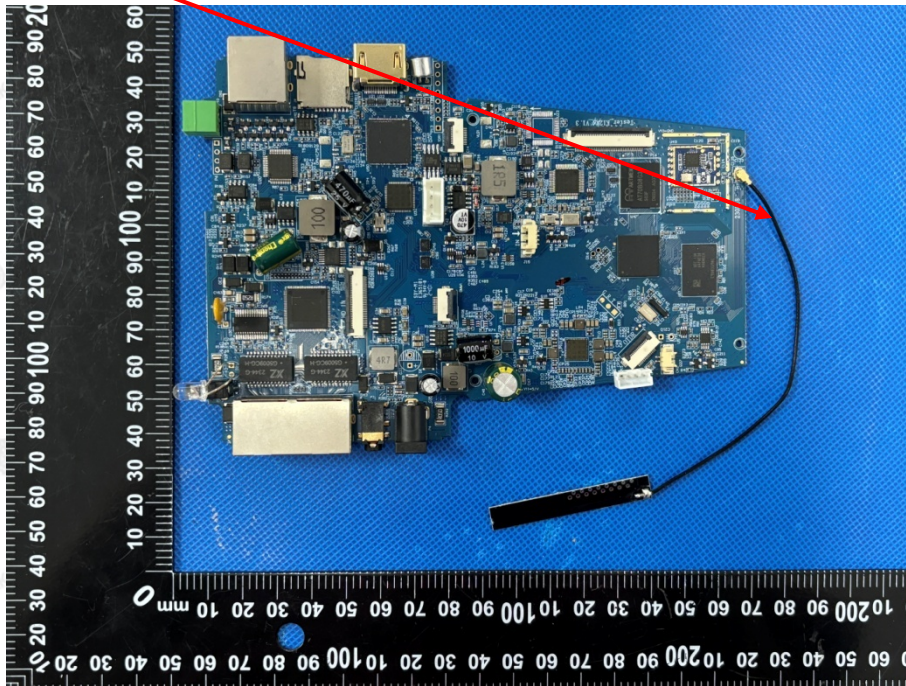
Refer to statement below for compliance.

The manufacturer may design the unit so that the user can replace a broken antenna, but the use of a standard antenna jack or electrical connector is prohibited. Further, this requirement does not apply to intentional radiators that must be professionally installed.

Antenna Connected Construction

The antenna used in this product is an Internal antenna, need professional installation, not easy to remove. It conforms to the standard requirements. The directional gains of antenna used for transmitting is 2dBi.

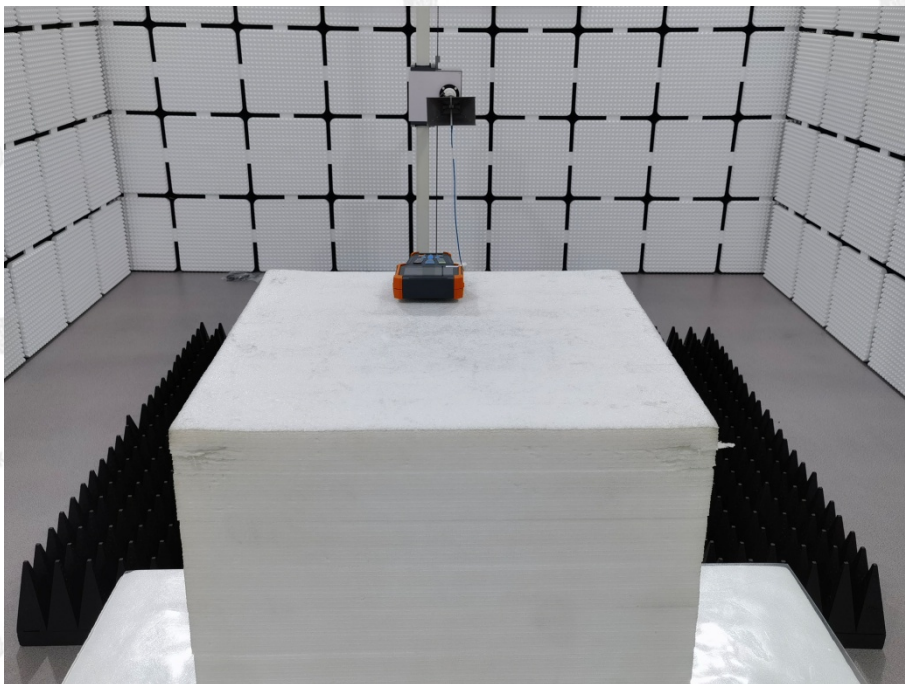
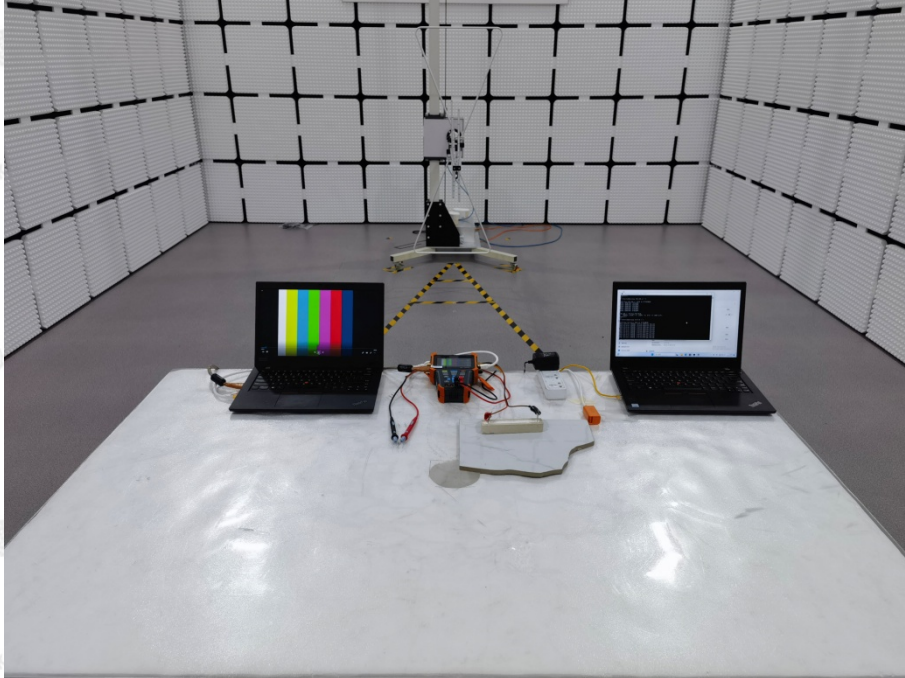
Antenna





5. Photograph of Test

Radiated Emissions



The results shown in this test report refer only to the sample(s) tested unless otherwise stated and the sample(s) are retained for 30 days only. The document is issued by HUAK, this document cannot be reproduced except in full with our prior written permission. The more details and the authenticity of the report will be confirmed at <http://www.cer-mark.com>.

TEL : +86-755 2302 9901 FAX : +86-755 2302 9901 E-mail : service@cer-mark.com

Addr: 1-2F., Building B2, Junfeng Zhongcheng Zhizao Innovation Park, Heping Community, Fuhai Street, Bao'an District, Shenzhen, Guangdong, China



Conducted Emission



The results shown in this test report refer only to the sample(s) tested unless otherwise stated and the sample(s) are retained for 30 days only. The document is issued by HUAK, this document cannot be reproduced except in full with our prior written permission. The more details and the authenticity of the report will be confirmed at <http://www.cer-mark.com>.

TEL : +86-755 2302 9901 FAX : +86-755 2302 9901 E-mail : service@cer-mark.com

Addr: 1-2F., Building B2, Junfeng Zhongcheng Zhizao Innovation Park, Heping Community, Fuhai Street, Bao'an District, Shenzhen, Guangdong, China



6. Photos of the EUT

Reference to the report: ANNEX A of external photos and ANNEX B of internal photos.

-----End of test report-----