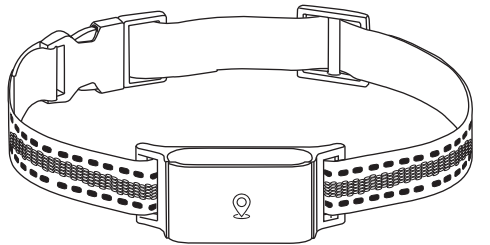


100-80mm

User Manual

C09



Please read the instructions carefully before use

Device Introduction

Thank you for choosing our pet locator. This device is a smart device for real-time tracking of pet locations, designed to ensure the safety of your pets and help you find them quickly when they are lost.

Features

1. Real-time positioning: Accurate positioning through GPS, Wi-Fi and LBS.
2. Trajectory record: Record the historical activity trajectory of your pet.
3. Safety fence: Set a virtual fence and receive instant alerts when your pet leaves the set area.
4. Extremely long battery life: Highly efficient and energy-saving design, it can be used continuously for several days after being fully charged.
5. Waterproof design: Suitable for all weather and environments.

Notes

1. Check the battery level: Check the battery level of the locator frequently to ensure that the positioning function will not fail due to low battery during use. It is recommended to charge it every few days.
2. Ensure fastening: Check regularly whether the locator is firmly fixed to the pet's collar or harness to prevent it from falling off or getting lost during the pet's activities.
3. Avoid water immersion: Although most locators are waterproof, it is recommended to avoid long-term immersion in water or contact with high-pressure water flow to avoid affecting the performance of the device.
4. Update software: Check and update the application and device firmware regularly to ensure that you are using the latest version for optimal performance and the latest features.
5. Usage environment: The accuracy of the locator may be affected in areas with weak signals, such as basements, dense urban buildings, or remote mountainous areas. Try to use it in open areas to ensure good signal reception.
6. Safety fence: Set up appropriate safety fences according to the pet's range of activities and living environment. When the pet leaves the safe area, receive notifications in time and take corresponding measures.
7. Anti-tampering design: If your pet likes to scratch or bite things, choose a locator with an anti-tampering design to prevent the pet from damaging the device.
8. Response notification: When you receive a notification that your pet has left the safe area or a low battery reminder, take appropriate measures in time to ensure the safety of your pet and the normal operation of the device.

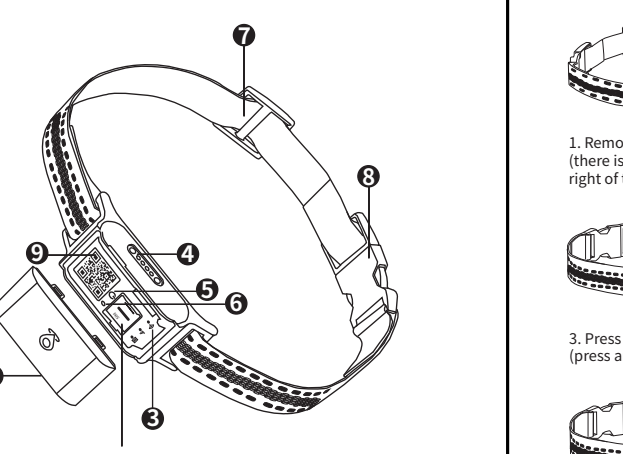
Common Problems

1. The locator cannot connect to the app: Check that the locator has sufficient battery, make sure Bluetooth is turned on, and try again within the device range.
2. Unable to obtain positioning information: Confirm that the locator is in an open environment with good signal strength. Weak signal areas such as indoors or in basements may affect the positioning effect.
3. Application push delay: Check that the mobile network connection is stable and make sure that notifications are allowed in the application settings.

Maintenance

1. Regular charging: Keep the battery fully charged to ensure the normal operation of the locator.
2. Cleaning equipment: Wipe the locator with a clean soft cloth regularly to prevent dust and dirt from accumulating and affecting the normal operation of the equipment.
3. Environmental factors: Do not expose the locator to extremely high or low temperatures for a long time to avoid damaging the internal circuit.
4. Wear: Regularly check the wear of the fixing belt and locator, and replace damaged parts in time to ensure the safety and reliability of the equipment.

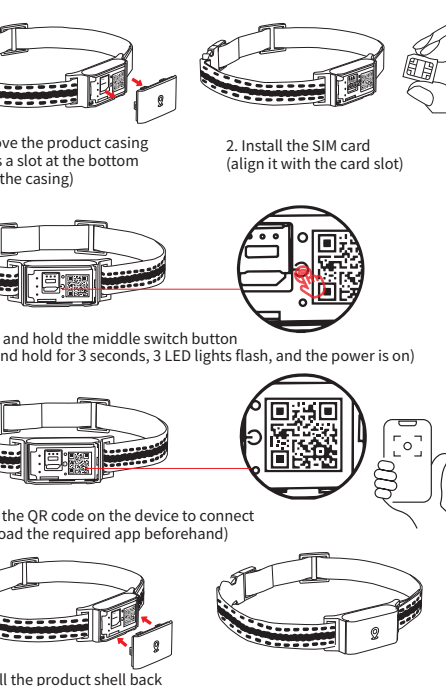
Product description



Function details:

1. Removable shell
2. SIM card slot
3. Function indicator light
4. Magnetic charging port
5. Switch
6. Charging indicator light
7. Length adjustment
8. Unlock button
9. Product QR code

Steps for usage



Installation steps

1. Unpacking inspection: Confirm that the package contains the locator host, charging cable, fixing belt and user manual.
2. Device charging: Use the included charging cable to charge the locator. The indicator light will light up during the charging process and turn off when fully charged.
3. Download the app: Search and download the "365GPS" app in the mobile app store, which supports iOS and Android systems.
4. Register an account: Open the app, use the account or QR code included in the manual, and follow the prompts to complete the registration process.
5. Bind device: Select "Bind device" in the app and follow the prompts to bind the locator to your account. Make sure the locator is turned on and within the Bluetooth range.
6. Fix the Positioner: Use the fixing strap to firmly fix the positioner in the appropriate position of your pet to ensure that it will not fall off.

User Notice:

1. Please use our GPS positioning device in compliance with relevant national laws and regulations and pay attention to protecting user privacy. Any user who illegally disassembles, modifies and uses the product for other illegal purposes and occasions will be held legally responsible in accordance with the law.
2. To protect your personal privacy, please do not disclose your GPS device IMEI number and password to anyone. If necessary, please change the password in time. If you accidentally forget the device login password, please contact after-sales customer service in time.
3. Since the GPS locator requires your local telecom operator network to provide data communication, GPS communication may be delayed in some areas with unstable signals.

Device power on

Open the SIM card slot, insert the SIM card when the device is turned off (LED lights are all off), then press and hold the power button for 3 seconds until 3 LED lights are on, and after about 2 seconds, the 3 LEDs will flash alternately (when the yellow light flashes slowly, it means that the GPS device is online on the APP).

Power on: Press and hold the power button for 3 seconds (until 3 LED lights are on).

Power off: 1. (with SIM card): Press and hold the power button for 8 seconds until 3 LED lights are on together, and then 3 LEDs are off together. It means that the device is turned off.

2. (without SIM card): Press and hold the power button for 3 seconds (release when 3 lights are on together, and LEDs are off together).

Tip: If the device cannot be turned on (LED is not on), please charge the device first. The device will automatically turn on after charging for a period of time.

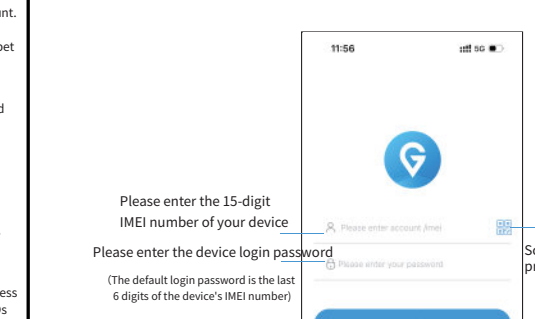
If the yellow light does not flash after the device is turned on, it means that the SIM card is invalid or in arrears. Please turn off the device and replace it with another valid SIM card.

Account Login

Login method:

1. Manually enter IMEI and password to log in. (If the user forgets the password after changing the password or accidentally loses and forgets the IMEI, please contact customer service in time)
2. Scan the code to log in to the APP. After the code is successfully scanned, the system automatically jumps to the main interface of the APP.

Tip: Each device has a QR code on the body (do not damage it). This QR code is the unique identification code of the device and contains the device 15-digit IMEI number, which is also the only credential for APP login. The default login password is the last 6 digits of IMEI.



Positioning interface

Location information: In the center of the main interface, you can see the current location information of your pet. The accurate address display allows you to know the location of your pet at a glance.

Battery power: The upper right corner of the interface displays the remaining power of the device, monitors the battery status in real time, ensures that the device continues to work, and does not interrupt the positioning function due to insufficient power.

Network signal: The device network signal strength is displayed next to the battery power to help you understand the connection status between the device and the network and ensure accurate transmission of positioning information.

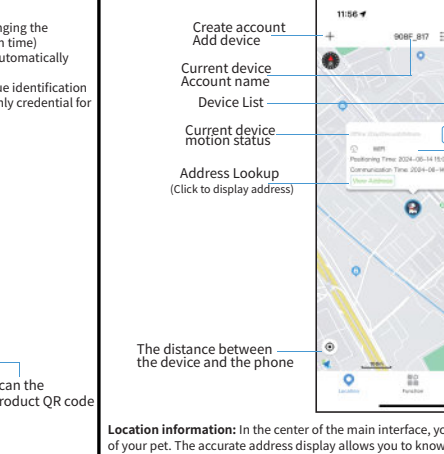
Positioning method: The upper left corner of the main interface displays the current positioning method (such as GPS, Wi-Fi or cellular network), which automatically switches according to different environments to ensure the best positioning effect.

Movement status: The current movement status of the pet is displayed below the location information, such as "stationary" or "moving", to help you understand the activity of the pet.

Movement speed: Displays the real-time movement speed of the pet, allowing you to grasp the movement dynamics of the pet and understand its activity intensity.

Altitude information: If the device uses GPS positioning, the altitude of the current location will be displayed at the bottom of the interface to provide more comprehensive location information (only supported when GPS positioning).

APP function interface



APP function interface

Users can find other related functions of the product in this menu, such as contacts, electronic fence, track, find device (activate this function, products with speakers will ring), power saving, etc. Click to enter the relevant function interface to directly set and view. Note: The contact menu supports adding up to three groups of SOS emergency contacts and 50 whitelist numbers (only emergency contacts and whitelist numbers can call the device).

Historical tracks and electronic fences

The equipment monitor can view the movement track of the equipment at any time through the mobile phone APP and set the appropriate range of electronic fences. The direction of equipment movement is shown by the arrow in the track in the figure below.

1. The start-end time of the track query cannot exceed 24 hours.
2. To query the historical track of many days ago, you can select it in the calendar in the upper left corner of the interface.
3. Users can freely adjust the track playback speed.
4. Please refer to the left figure above for the track display method, and users can switch it at will.
5. The system supports querying the product movement track within up to 90 days.
6. Users can select the required location on the map and then set the corresponding range of electronic fences. For example, if the user sets a push message in "Settings" -> "Console", when the device positioning shows that it has left the set range of the electronic fence, the APP will receive an alarm message pushed by the electronic fence.

Set up

Users can set the following functions in this interface: positioning mode (upload interval setting), map, password modification, console, etc. In the "Console" interface, users can refer to the following figure to set the corresponding functions according to their needs. Note: After the device is turned off in the "Console" interface, it will be completely turned off. Manually turning on the device or charging the device will restart the device.

Map settings:

You can choose different map options according to your needs.

Positioning mode:

You can choose different positioning modes and location upload intervals according to your needs.

Accurate mode:

The default position is automatically refreshed every minute, which is suitable for emergency searches and has high power consumption.

Power saving mode:

Users can set the positioning refresh interval between 3-120 minutes according to their needs. The longer the interval, the lower the power consumption.

Sleep mode:

The device will enter sleep mode and will not actively upload the position. It is super power-saving and users can change the positioning mode at will.

Change password:

After changing the default password, please keep the password properly.

Console:

Please enable/disable the necessary options according to your needs.

Restore factory settings:

Users can set the positioning refresh interval between 3-120 minutes according to their needs. The longer the interval, the lower the power consumption.

Console:

Please enable/disable the necessary options according to your needs.

Restore factory settings:

When the GPS tracker is online in the APP, you can use this option to clear all device data and restore it to factory settings. The password will also be restored to the default settings when the device left the factory.

LED indicator light

Red light: battery indicator light, slow flashing means normal, fast flashing means low battery, off when in standby mode, always on when charging.

Yellow light: SIM signal light, slow flashing means normal, fast flashing means searching for signal, off when in standby mode.

Blue light: GPS signal light, slow flashing means normal, fast flashing means searching for signal, off when in standby mode.

Information (alarm information)

Users can view the alarm information of the device in the "Information" menu. If the user turns on the push message in "Settings" -> "Console", the mobile phone will receive the corresponding push and alarm information of the device in the notification bar, as shown in the figure below:



Product Parameters

Charging type	USB to magnetic
Charging voltage	DC5V/1A
Battery capacity	3.7V/500MAH
Charging time	2H
Battery life	About 7 days (depending on usage)
Waterproof level	IP66
Operating temperature	-20—60°C
Material	ABS+ PC
Network	GSM/GPRS/GPS
APP	365GPS

FCC Statement

This equipment has been tested and found to comply with the limits for a Class B digital device, pursuant to part 15 of the FCC Rules. These limits are designed to provide reasonable protection against harmful interference in a residential installation. This equipment generates, uses and can radiate radio frequency energy and, if not installed and used in accordance with the instructions, may cause harmful interference to radio communications. However, there is no guarantee that interference will not occur in a particular installation. If this equipment does cause harmful interference to radio or television reception, which can be determined by turning the equipment off and on, the user is encouraged to try to correct the interference by one or more of the following measures:

- Reorient or relocate the receiving antenna.
- Increase the separation between the equipment and receiver.
- Connect the equipment into an outlet on a circuit different from that to which the receiver is connected.
- Consult the dealer or an experienced radio/TV technician for help.

Caution: Any changes or modifications to this device not explicitly approved by manufacturer could void your authority to operate this equipment.

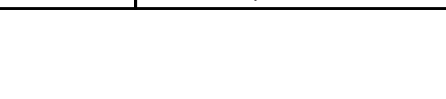
This device complies with part 15 of the FCC Rules. Operation is subject to the following two conditions:

- (1) This device may not cause harmful interference,
- (2) this device must accept any interference received, including interference that may cause undesired operation.

Specific Absorption Rate (SAR) information:

This device meets the government's requirements for exposure to radio waves. The guidelines are based on standards that were developed by independent scientific organizations through periodic and thorough evaluation of scientific studies. The standards include a substantial safety margin designed to assure the safety of all persons regardless of age or health. FCC RF Exposure Information and Statement the SAR limit of USA (FCC) is 1.6 W/kg averaged over one gram of tissue. Device types: Laptop has also been tested against this SAR limit. This device was tested for typical body-worn operations with the back of the device kept 0mm from the body. To maintain compliance with FCC RF exposure requirements, use accessories that maintain an 0 mm separation distance between the user's body and the back of the device. The use of belt clips, holsters and similar accessories should not contain metallic components in its assembly. The use of accessories that do not satisfy these requirements may not comply with FCC RF exposure requirements, and should be avoided.

365GPS



APP QR code

You can download it by searching on Android and Apple stores

