

成品尺寸: 85*111mm

展开尺寸: 170*111mm

请仔细校对文字、图案、内容、尺寸, 若要修改请书面说明, 若无异议请确认! !

Setting Clock

1. To set the clock, hold MODE (M) button for 3 seconds and use the up and down arrow keys to set the hour. Tap mode again to adjust the minutes. Hold MODE again to exit time setting mode.

Setting Alarm

1. Short press the mode button for one second until the alarm clock starts to flash. Use the up and down arrow keys to set the hour. Tap mode again to adjust the minutes. Hold MODE again to exit alarm setting mode.
2. Press and hold the up arrow to turn the alarm function on. Press and hold the down arrow to turn the alarm off. Press any button to turn off alarm when it sounds.

Replacing Backup Battery

1. This clock is equipped with a backup battery that will hold time settings during power outages.
2. Clock requires 1 "CR2025" 3V lithium battery (included). To replace, use a screwdriver to open the battery compartment and replace the battery following the polarity markings.

Fast wireless charging works with most standard thickness protective cases made of plastic. Remove any metal case or metal plate adhered to the back of your phone prior to charging. Metal cases and metal plates will cause interference that could damage your device.

CAUTION! Device must have Qi enabled charging. Check with manufacturer for compatibility.

Never use the charger to charge smartphones with metal cases or metal plates between the case and the phone. Some additional non-metal protective cases may also interfere with proper charging.

The charger, phone and accessories will feel warm during or after charging.

WARNING! IMPORTANT CARE AND SAFEGUARDS

Failure to follow the safety instructions can lead to fire, electrical shock, personal injury or property damage and damage to this product.

- Do not use this wireless charger for anything other than it's intended use
This product is not intended charge batteries or other devices
If you have an electrical device, such as a pacemaker, consult a physician before using this product
Do not place magnetic cards or similar items near this product
Keep all foreign objects, small metal pieces and debris away from charging surfaces at all times
Make sure charging surfaces are clear prior to use and at all times
Always use the specified power source and voltage
Do not use a voltage converter / travel adapter
Always place the charging clock on a sturdy and level surface
This product contains small parts and is not suitable for children
Do not expose this product to rain, water or excessive humidity
If the charger becomes wet, immediately unplug it from the power source
Keep charging clock away from heat sources and direct sunlight
Always use this product in operating temperatures of 32°F (0°C) 95°F (35°C)
Do not handle charging dock, USB power cord or power source with wet hands
Do not let dust or other things accumulate on charging dock and power cord
Do not use the charging clock if it has been dropped or damaged in any way
Never take this device apart and always get repaired by a qualified technician
Always unplug the charging clock when not in use for a long period of time

FCC Disclaimer: This device complies with part 15 of the FCC Rules. Operation is subject to the following two conditions: (1) This device may not cause harmful interference, and (2) this device must accept any interference received, including interference that may cause undesired operation. NOTE: THE MANUFACTURER IS NOT RESPONSIBLE FOR ANY RADIO OR TV INTERFERENCE CAUSED BY UNAUTHORIZED MODIFICATIONS TO THIS EQUIPMENT. SUCH MODIFICATIONS COULD VOID THE USER AUTHORITY TO OPERATE THE EQUIPMENT.

The 'Qi' symbol is a trademark of the Wireless Power Consortium. iPhone, Apple Watch, AirPods and MagSafe are registered trademarks of Apple Inc., registered in the U.S. and other countries. Android is a trademark of Google Inc.



SAVE THESE INSTRUCTIONS FOR FUTURE REFERENCE

Any questions, please call customer service at 1-800-254-0111

2434 Research Dr., Livermore, CA 94550

8:30am - 5pm, PST, Monday - Friday, or email us at customerservice@jilgear.com

© 2024 JLR Gear - Made in China

3 in 1 Wireless Charging Clock



Plug into any USB power source 5V 3A or greater. For faster charging speeds, combine with a 9V 3A USB power source. USB power source not included.

Product Instruction Manual

Please read carefully prior to use.



WARNING

- INGESTION HAZARD: This product contains a button cell or coin battery.
DEATH or serious injury can occur if ingested.
A swallowed button cell or coin battery can cause Internal Chemical Burns in as little as 2 hours.
KEEP new and used batteries OUT OF REACH OF CHILDREN
Seek immediate medical attention if a battery is suspected to be swallowed or inserted inside any part of the body.

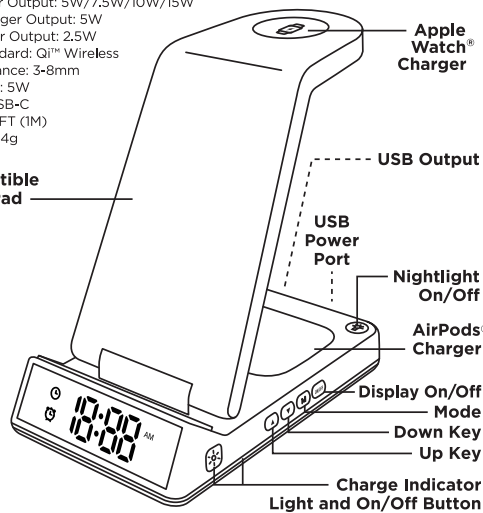
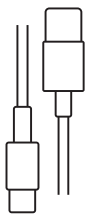


Specifications

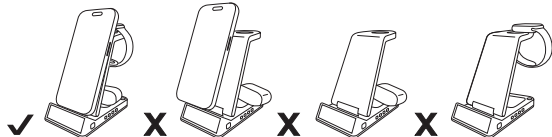
Input: 5V 3A / 9V 3A
Phone Charger Output: 5W/7.5W/10W/15W
AirPods® Charger Output: 5W
Watch Charger Output: 2.5W
Charging Standard: Qi™ Wireless
Charging Distance: 3-8mm
USB-A Output: 5W
Power Port: USB-C
Power Cord: 3FT (1M)
Net Weight: 124g



Qi® Compatible Charging Pad



Proper Charge Positioning



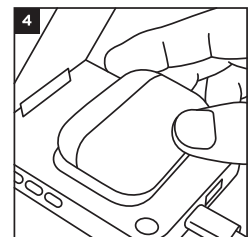
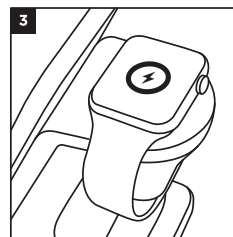
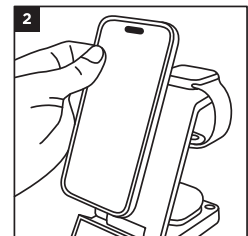
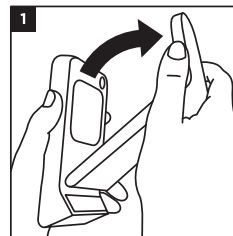
Care Tip: Unplug charger and wipe with a soft cloth. Never use any abrasive cleaning agents or get wet. Periodically wipe off accumulated dust.

Connecting Power

- Connect USB cable to USB-C port on bottom back of charging clock.
2. Connect to USB power source 5V 3A or greater. For best results and faster charging speeds, connect to 9V 3A USB power source.

Charging Your Devices

- Fold stand open and place on flat surface.
2. Place smartphone on the phone charging pad to charge wirelessly. LED light will indicate device is charging. Your device will display the charging progress on screen.
3. Place Apple Watch® flat on top of the watch charger as shown.
4. Place AirPods® on the bottom charging pad of the clock to charge wirelessly.
5. Connect to USB-A output to charge or power other small devices.



FCC Statement

This equipment has been tested and found to comply with the limits for a Class B digital device, pursuant to part 15 of the FCC Rules. These limits are designed to provide reasonable protection against harmful interference in a residential installation. This equipment generates, uses and can radiate radio frequency energy and, if not installed and used in accordance with the instructions, may cause harmful interference to radio communications. However, there is no guarantee that interference will not occur in a particular installation. If this equipment does cause harmful interference to radio or television reception, which can be determined by turning the equipment off and on, the user is encouraged to try to correct the interference by one or more of the following measures:

- Reorient or relocate the receiving antenna.
- Increase the separation between the equipment and receiver.
- Connect the equipment into an outlet on a circuit different from that to which the receiver is connected.
- Consult the dealer or an experienced radio/TV technician for help.

Caution: Any changes or modifications to this device not explicitly approved by manufacturer could void your authority to operate this equipment.

This device complies with part 15 of the FCC Rules. Operation is subject to the following two conditions: (1) This device may not cause harmful interference, and (2) this device must accept any interference received, including interference that may cause undesired operation.

RF Exposure Information

This equipment complies with FCC radiation exposure limits set forth for an uncontrolled environment. This equipment should be installed and operated with minimum distance 20cm between the radiator and your body.