

红点信息科技（深圳）有限公司

RED DOT INFORMATION TECHNOLOGY SHE NI Z ENCO, LTD

产品规格书

PRODUCT SPECIFICATION

客户 customer	
客户编码 customers part number	
产品料号 product Materialcode	
工作频段 working Band	2400MHz-2500MHz
发行日期 Issue Date	2024-06-22
发行版本 Releaseversion	A1
作者 Author	邹杨辰

目录

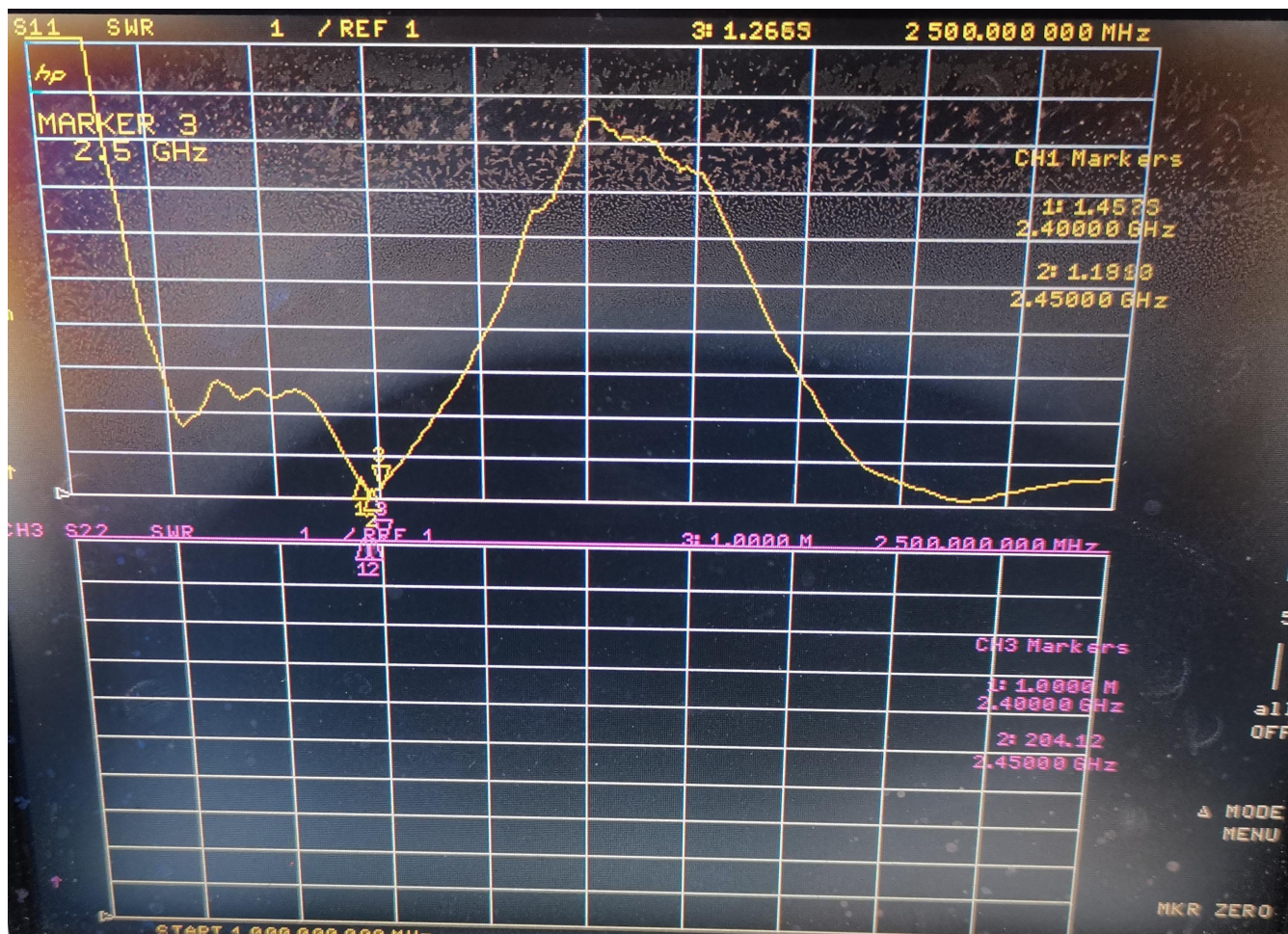
封面.....	1
目录.....	2
产品参数.....	3
驻波比.....	4
效率/增益.....	5
方向性图.....	6
产品图纸.....	7

一、产品技术指标 (Product technical indicators)

电性能指标 Electrical Specifications	
频率范围 Frequency Range (MHz)	2400-2500
输入阻抗 Input Impedance (Ω)	50
频带宽度 Bandwidth (MHz)	100
电压驻波比 VSWR	<2
增益 Gain (dBi)	2.4G:1.39DBI
极化形式 Polarization Type	线极化
机械指标 Mechanical Specifications	
工作温度 OperatinTemp ($^{\circ}\text{C}$)	-40~85
储存温度 Storing Temp ($^{\circ}\text{C}$)	-40~85

二、驻波比 (VSWR)

Frequency(MHz)	2400	2450	2500
VSWR	1.45	1.19	1.26

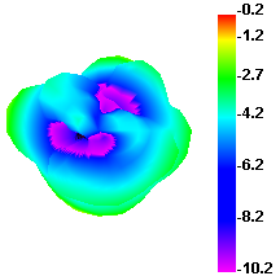


三、效率/增益 (Efficiency/Gain)

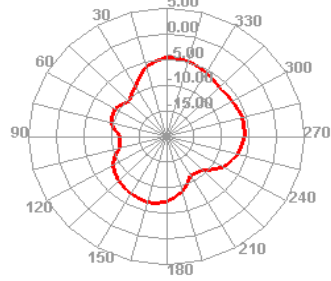
Passive Test For WiFi2.4									
Freq (MHz)	Effi (%)	Effi (dB)	Gain (dBi)	Gain (dBd)	UHIS (%)	DHIS (%)	Max (dB)	Min (dB)	Directivity (dBi)
2400	23.26	-6.33	-0.18	-2.33	7.26	15.999	-0.18	-17.97	6.15
2410	26.44	-5.78	0.32	-1.83	8.367	18.071	0.32	-16.46	6.1
2420	26.83	-5.71	0.29	-1.86	8.649	18.177	0.29	-16.66	6.01
2430	26.33	-5.8	0.01	-2.14	8.694	17.633	0.01	-19	5.8
2440	28.22	-5.49	0.1	-2.05	9.538	18.685	0.1	-20.04	5.59
2450	30.59	-5.14	0.34	-1.81	10.572	20.019	0.34	-19.56	5.49
2460	31.85	-4.97	0.48	-1.67	11.196	20.655	0.48	-18.33	5.44
2470	32.37	-4.9	0.59	-1.56	11.545	20.821	0.59	-17.51	5.49
2480	33.43	-4.76	0.82	-1.33	12.127	21.303	0.82	-17.26	5.58
2490	36.78	-4.34	1.27	-0.88	13.58	23.203	1.27	-16.53	5.62
2500	38.55	-4.14	1.39	-0.76	14.454	24.099	1.39	-16.57	5.53

四、方向性图(Directivity diagram)

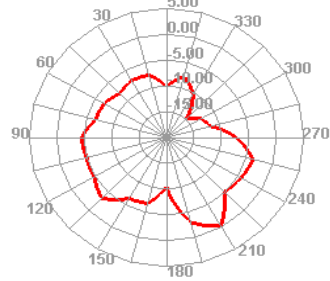
2400.000MHz



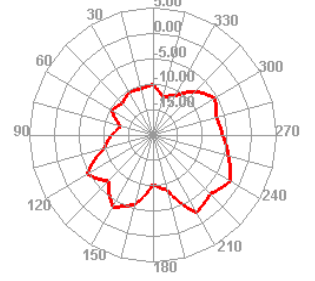
2400.000MHz H



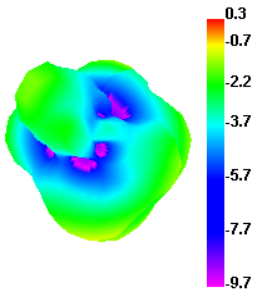
2400.000MHz E1



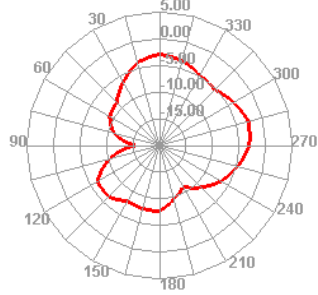
2400.000MHz E2



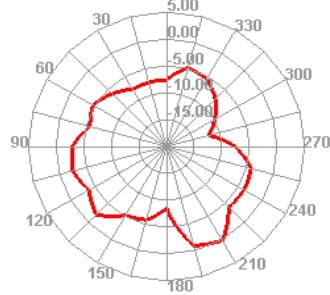
2450.000MHz



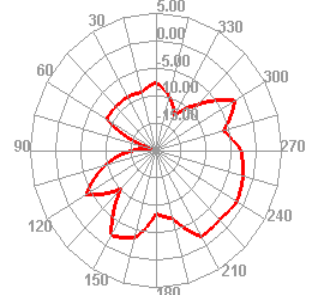
2450.000MHz H



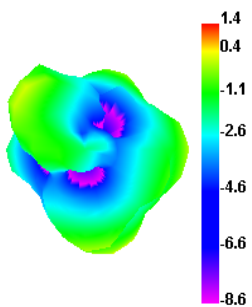
2450.000MHz E1



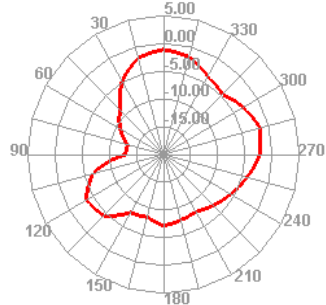
2450.000MHz E2



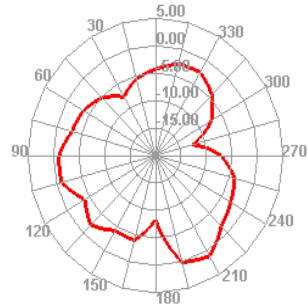
2500.000MHz



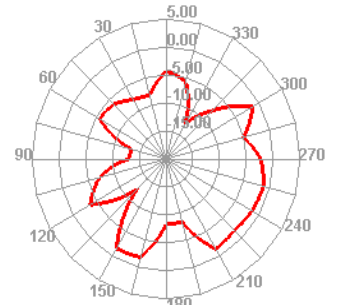
2500.000MHz H



2500.000MHz E1



2500.000MHz E2



五、产品图纸 (Product drawing)

