

Anti gravity sound humidifier

Before use: please use purified water
Donotuse alcoholesentialoilaromatherapy.etc

Instruction manual

Thank you for choosing this product.
In order to give full play to the product functions,
Please read this manual carefully before use,
And please keep it securely for easy reference.

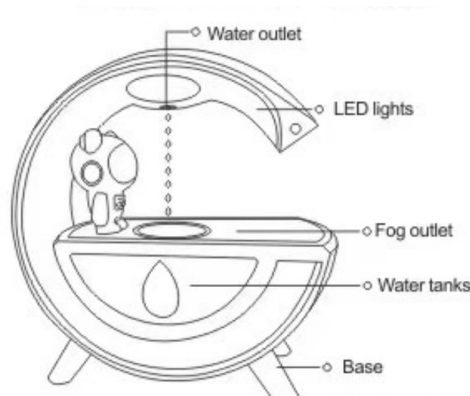
Important points to Note

▲ In order to ensure the quality of the product, before leaving the factory will be solid water test, after receiving the product has a small amount of water droplets residue, is a normal phenomenon.

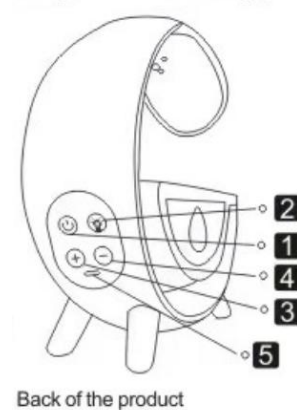
▲ The shape and spacing of each water droplet in the product are different, and it is normal that the water droplet produced by each product is different.

▲ As the gas in the water pipe is not exhausted, it is normal for the water droplet to have a delay (water droplet does not form) when starting the machine, and the delay is about 30s-60s. Let and right, the water will form naturally, please be patient.

Product schematic diagram



Front of the product



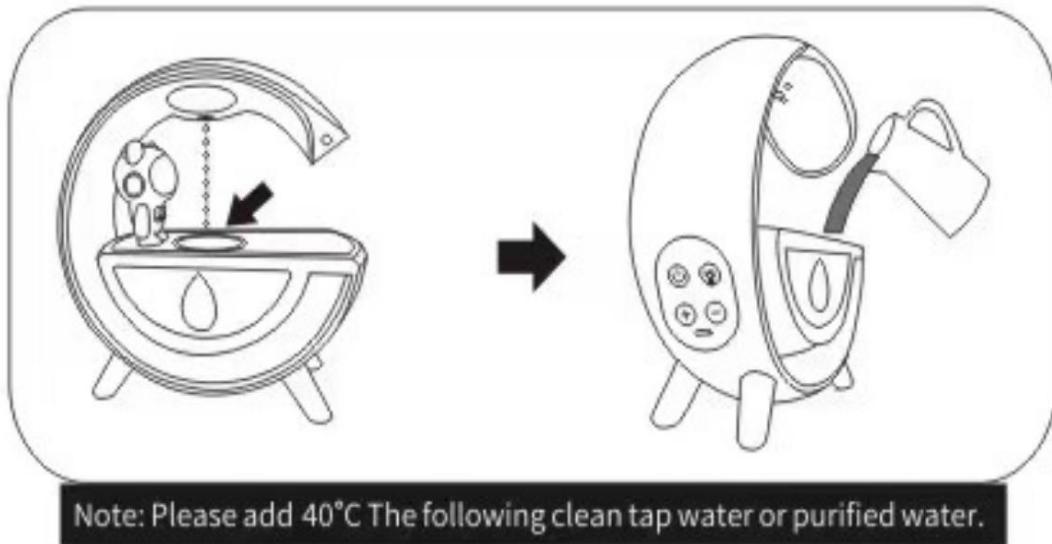
- ① Press the power button to turn on and then turn off;
- ② Press the light button to change the color of the colored lights;
- ③ Press the "+" button to move on to the next song, and long press to increase the sound;
- ④ Press and hold the "-" button to go back to the previous song, then press and hold to decrease the volume.
- ⑤ Charging port;
- ⑥ Can connect to Bluetooth to play music (Bluetooth name: T00K8)

Technical parameters

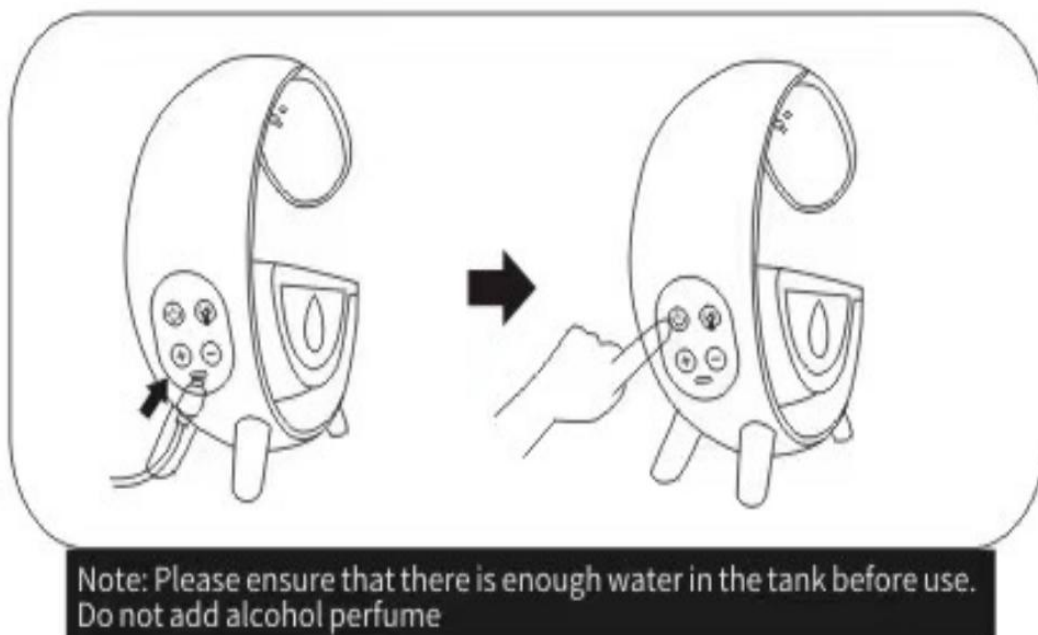
Name: Anti gravity sound humidifier	Model: T00K8
Water tank capacity: 350ml	Size: 235x238x80mm
Running time :8 hours	Color: White
Rated power :5w	Weight: 650g
Rated voltage :5V	Material :ABS+ silica gel
Power supply :5V=2A	Fog quantity: 60-80ml/h
Bluetooth function: T00K8	

Product operation instructions

1. Unscrew the top cover.
2. Fill the tank with pure water.



3. Power on the adapter.
4. Touch the button and fog begins.



Content list

Anti-gravity humidifier*1 Charge Cable*1 Instruction Manual*1

Common Failures and Troubleshooting

Malfunction	Reason	Solution
Can not start	Wrong poweradapter	Use a 5V-2A power adapter before turing it on again
Can not generate Mistsubstantaly little mist	There may be dirtin the atomizer piece that is clogging the hole atthe bottom of the atomization plece.	Use a cotton swab dipped in white vinegar to gentiywipethe atomnization plece to clean the dirt, and replace a newultrasonic atomization piece
Can not from Water drops	Not sufficientwater in the watertank	Fill waterinto the tan k until it reaches the water line
	Delayed start-up,empty pump	Restart again
	Wrong power adapter	Use a 5V-2A power adapter beforetumingit on again
LED does not light up	Motherboard bumed out	Contact after-sales semvice
	Cable not connected property	Reconnect the cable or change the poweradapter
Button can notbe pressed	The button is jamred	Contact after-sales service
ButtonMatfunction	Motherboard burned out	Contact after-sales service

After-sales service card

Product Name:.....

Date of Purchase:.....

Name:.....

ContactAddress:.....

DistributorAddress:.....

Distributor Name:.....

Distributor Contact Number:.....

We implement paid services for the following situations: users modify or install other functions. The damage caused by the repair and disassembly of the faulty machine; Improper transportation and storage by the user or failure to follow the instructions. Damage caused by required use; The warranty certificate is altered; Without warranty certificate and valid invoice or major parts exceeding the corresponding warranty period.

Tips:

1. This product warranty card is the only proof of product warranty. Please keep it properly.
2. The relevant product warranty regulations shall be subject to the terms of After-sales Service.

FCC Statement

This equipment has been tested and found to comply with the limits for a Class B digital device, pursuant to part 15 of the FCC Rules. These limits are designed to provide reasonable protection against harmful interference in a residential installation. This equipment generates, uses and can radiate radio frequency energy and, if not installed and used in accordance with the instructions, may cause harmful interference to radio communications. However, there is no guarantee that interference will not occur in a particular installation. If this equipment does cause harmful interference to radio or television reception, which can be determined by turning the equipment off and on, the user is encouraged to try to correct the interference by one or more of the following measures:

- Reorient or relocate the receiving antenna.
- Increase the separation between the equipment and receiver.
- Connect the equipment into an outlet on a circuit different from that to which the receiver is connected.
- Consult the dealer or an experienced radio/TV technician for help.

Caution: Any changes or modifications to this device not explicitly approved by manufacturer could void your authority to operate this equipment.

This device complies with part 15 of the FCC Rules. Operation is subject to the following two conditions: (1) This device may not cause harmful interference, and (2) this device must accept any interference received, including interference that may cause undesired operation.

RF Exposure Information

This equipment complies with FCC radiation exposure limits set forth for an uncontrolled environment. This equipment should be installed and operated with minimum distance 20cm between the radiator and your body.