

USER'S MANUAL



This manual is general instructions. The pictures and functions in this manual should subject to the actual product. Our company is devoting to improve product performance. We reserve the right to modify product functions and interfaces described in this manual without notice.



Important safety precautions

Announcements

Thank you for purchasing this digital projector series. Please read through this manual for proper use of this product. After reading, please put this manual together with the warranty card in a safe place for reference. Please read this instruction manual if you need to know something or have any problems.

⚠ ANOTICE
To prevent electric shock, do not open the chassis. There are no parts in the machine that the customer can repair. Please entrust qualified professional maintenance personnel to carry out maintenance.

⚠ This sign reminds the user that great care must be taken in operation and repair, therefore, it must be read carefully to prevent any failures.

⚠ This sign warns the user that uninsulated voltages in the unit may cause electric shock from the surface magnetic field, and therefore it is dangerous to contact any part of the unit.

WARNING
To prevent fire or electric shock, do not expose the unit to rain or moisture. Do not open the case.

⚠ Warning: Do not look directly at or stare at the light beam from the lens. Strong light may cause eye discomfort or damage. Parents should supervise and educate children to use it properly.

⚠ Suitable for altitude less than 2000 m and non-hot climate

Important safety precautions

Identification of electronic information product pollution control labeling requirements. (1) Contains the name of 6 kinds of harmful substances, contains the amount, contains part. This product is contained in the name of the 6 kinds of harmful substances, contains quantity, containing the part shown in the table below:
Name and content of toxic and harmful substances or elements in the product.

Part name	Toxic or harmful substance or element					
	Pb	Hg	Cd	Cr(VI)	PBB	PBDE
Actual substrate	o	o	o	o	o	o
Framework	o	o	o	o	o	o
Light source	o	o	o	o	o	o
Connecting wires between machines	o	o	o	o	o	o

Note (meaning of o or x)
o indicates that the content of the toxic and harmful substance in all homogeneous materials of the component is below the limit requirements specified in SJ/T11363-2006 standard. x means that the content of the toxic and harmful substance in at least one homogeneous material of the component exceeds the limit requirements specified in SJ/T11363-2006 standard.
1. "Frame" of part name, including external frame and internal component.

(2) Pollution control label of electronic information products.
The environmental protection service life of this product is marked according to the national Pollution Control and Management Measures for Electronic Information Products published on 2/28, 2006. As long as the product can comply with the safety and use of matters needing attention, from the production date within the number of years, will not have a profound impact on environmental pollution, human body, property.

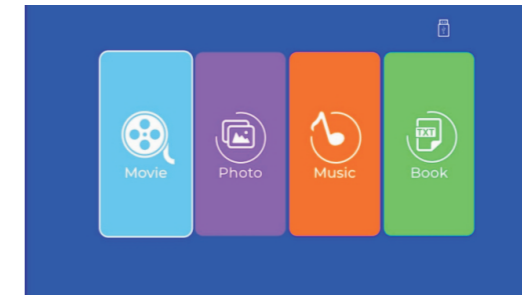
When the product is discarded after normal use, the recycling and reuse of electronic information products should comply with the requirements of local laws and regulations.

(3) Packaging recycling mark (GB18455-2001)
According to the packaging recycling mark (GB18455-2001), each packaging material of the product is identified.
When discarding packaging materials, please comply with local laws and regulations on recycling and reuse of packaging materials.

Check before use Use of remote control



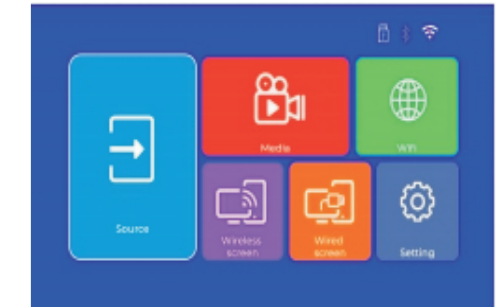
Check before use Turn on the projector, please check your projector UI Edition (UI 1)



This UI is the Basic function model UI. It can support play Video, Music, Photo. You also can connect it with your smart phone via the USB original cable.

Users need to select the correct signal input source before accessing the computer, TV, set-top box, game box, dvd etc.

Check before use Turn on the projector, please check your projector UI Edition (UI 2)

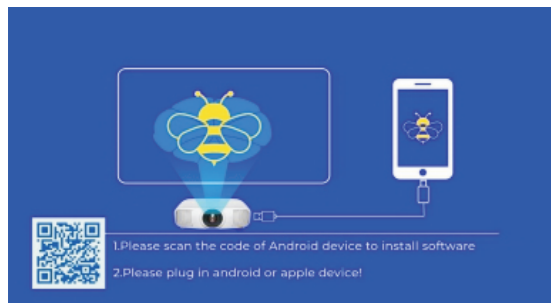


This UI support wireless screen mirroring function. It can support play Video, Music, Photo. You also can connect it with your smart phone via the USB original cable.

Users need to select the correct signal input source before accessing the computer, TV, set-top box, game box, dvd etc.

Wired Screen Function

Press Source button or press Wired screen function under UI two. Then choose Wired Screen function. Then the below UI will show UP.



iOS connect by Cables

1. Connect your iPhone to the projector via the original iPhone charging cable. (Cable has a USB port and Lighting Port)
2. Please click "Trust" when the iPhone shows a pop-up window.
3. Enter device password.

Android cable is on the same screen

1. Connect your Android phone to the projector via the original Android phone cable. (The data cable must have a USB port and be connected to a computer to read the contents of the phone)

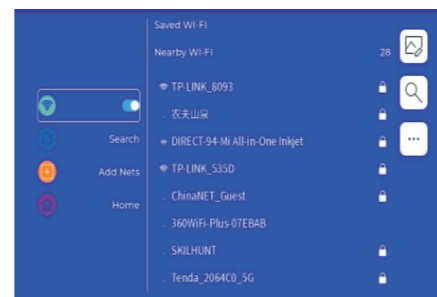
2. Install the APK required for the same screen according to the prompt, or scan the two-dimensional code on the projector screen interface to download and install.

3. After the APK is installed successfully, the same screen function can be realized.

4. Note that when Android phones are on the same screen, the sound is coming from the phone, not from the projector.

Setting WIFI

1. Press setting button on remote control or enter setting function on first page of the second UI.
2. After enter the wifi setting interface, open the "wireless and internet" button.
3. Choose a WiFi and input the password, then connect it.



Wireless screen

Wireless screen support for Apple and Android devices

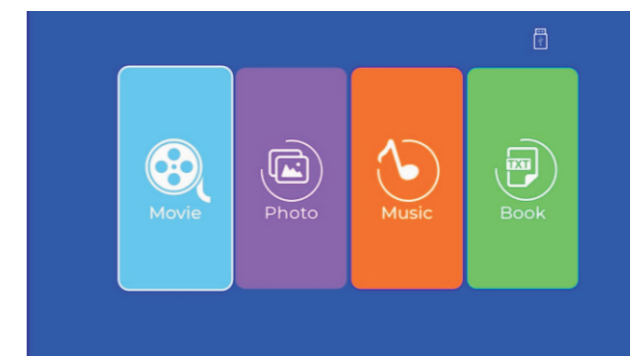
1. Turn on WiFi of the mobile phone.
2. Turn on the "wireless display"/"screen mirroring" function in the phone settings and choose the device name. Then connect it.



Please make sure your smart phone and projector connect to the same WiFi.

Media under the second UI

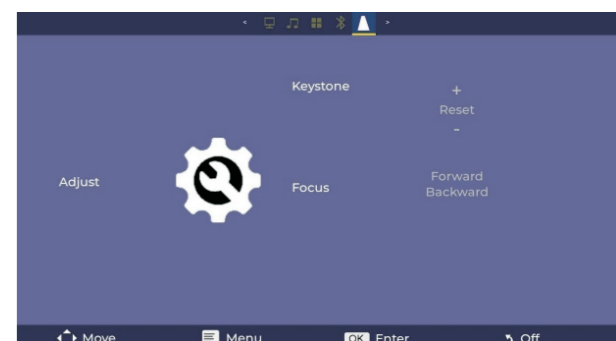
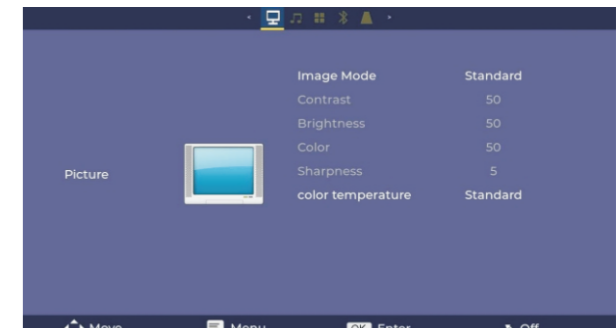
This page can play video, music, photos and e-books as well.



You can use remote control to choose and play after connect to a USB driver or hard disk.

Setting

You can setting language, image, color or keystone etc. here.



FCC Warning:

This equipment has been tested and found to comply with the limits for a Class B digital device, pursuant to part 15 of the FCC Rules. These limits are designed to provide reasonable protection against harmful interference in a residential installation. This equipment generates, uses and can radiate radio frequency energy and, if not installed and used in accordance with the instructions, may cause harmful interference to radio communications. However, there is no guarantee that interference will not occur in a particular installation. If this equipment does cause harmful interference to radio or television reception, which can be determined by turning the equipment off and on, the user is encouraged to try to correct the interference by one or more of the following measures:

- Reorient or relocate the receiving antenna.
- Increase the separation between the equipment and receiver.
- Connect the equipment into an outlet on a circuit different from that to which the receiver is connected.
- Consult the dealer or an experienced radio/TV technician for help.

Caution: Any changes or modifications to this device not explicitly approved by manufacturer could void your authority to operate this equipment.

This device complies with part 15 of the FCC Rules. Operation is subject to the following two conditions:

(1) This device may not cause harmful interference, and (2) this device must accept any interference received, including interference that may cause undesired operation.

This equipment complies with FCC radiation exposure limits set forth for an uncontrolled environment. This equipment should be installed and operated with minimum distance 20cm between the radiator and your body.