



THE DISPLAY CHOICE  
OF PROFESSIONALS™

IFP6504E-AE 4K UHD Interactive Display

[www.agneovo.com](http://www.agneovo.com)

# User Manual

# IMPORTANT SAFETY INSTRUCTIONS



This lightning flash with arrowhead symbol within an equilateral triangle is intended to alert the user to the presence of non-insulated "dangerous voltage" within the product's enclosure that may be of sufficient magnitude to constitute a risk of electric shock.

## WARNING

1. To reduce the risk of electric shock, do not remove cover (or back) as there are no user-serviceable parts inside. Refer servicing to qualified personnel.
2. The exclamation point within an equilateral triangle is intended to alert the user to the presence of important operating and maintenance instructions in the literature accompanying the appliance.
3. Do not install this equipment in a confined or building-in space such as a book case or similar unit, and remain a well ventilation conditions at open site. The ventilation should not be impeded by covering the ventilation openings with items such as newspaper, table-cloths, curtains etc.
4. Please refer the information on exterior bottom enclosure for electrical and safety information before installing or operating the apparatus.
5. The mains plug/appliance couple is used as disconnect device, the disconnect device shall remain readily operable.
6. To reduce the risk of fire or electric shock, do not expose this apparatus to rain or moisture. The apparatus shall not be exposed to dripping or splashing and that objects filled with liquids, such as vases, shall not be placed on apparatus.
7. The battery (battery or batteries or battery pack) shall not be exposed to excessive heat such as sunshine, fire or the like.
8. Never place a equipment set in an unstable location. A equipment set may fall, causing serious personal injury or death. Many injuries, particularly to children, can be avoided by taking simple precautions such as:
  - Using cabinets or stands recommended by manufacturer of the equipment set.
  - Only using furniture that can safely support the equipment set.
  - Not placing the equipment set on tall furniture (for example, cupboards or bookcases) without anchoring both the furniture and equipment set to a suitable support.
  - Not placing the equipment set on cloth or other materials that may be located between the equipment set and supporting furniture.
  - Educating children about the dangers of climbing on furniture to reach the equipment set or its controls. If your existing equipment set is being retained and located, the same considerations are above should be applied.
9. No naked flame sources, such as lighted candles, should be placed on the apparatus.
10. Keep a minimum distance of 5 cm around all edges of the display for sufficient ventilation.

### Notes for battery disposal

The batteries used with this product contain chemicals that are harmful to the environment. To preserve our environment, dispose of used batteries according to your local laws or regulations. Do not dispose of batteries with normal household waste. For more information, please contact the local authority or your retailer where you purchased the product. All trademarks are the property of their respective owners and all rights are acknowledged.



To prevent the spread of fire, keep candles or other open flames away from this product at all times.



Correct Disposal of this product. This marking indicates that this product should not be disposed with other household wastes throughout the EU. To prevent possible harm to the environment or human health from uncontrolled waste disposal, recycle it responsibly to promote the sustainable reuse of material resources. To return your used device, please use the return and collection systems or contact the retailer where the product was purchased. They can take this product for environmental safe recycling.

#### WARNING:

- replacement of a battery with an incorrect type may defeat a safeguard;
- disposal of a battery into fire or a hot oven, or mechanically crushing or cutting of a battery, may result in an explosion;
- leaving a battery in an extremely high temperature surrounding environment, such as sunshine, fire, or hot surface may result in an explosion or the leakage of flammable liquid or gas;
- a battery subjected to extremely low air pressure may result in an explosion or the leakage of flammable liquid or gas.

#### CAUTION

*Risk of fire or explosion if the battery is replaced by an incorrect type!*

# Table of Contents

## Chapter 1: Introduction

Sockets .....	4
Precautions .....	6
Product .....	6
Power and Plug .....	6
Power Cord and Signal Cable .....	6
Use Environment .....	6
Cleaning .....	6
Hanging the machine Set on the Wall .....	6

## Chapter 2: General Operation

Switching on .....	7
Switching off .....	7
Network connection .....	8

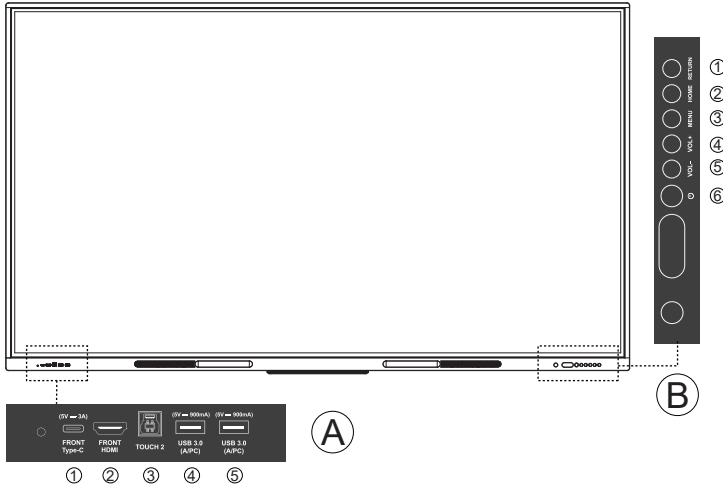
## Chapter 3: Other Information

Troubleshooting .....	9
-----------------------	---

Accessories list: HDMI cable x1, USB cable x2, power cable x1, wall mounted x1, QSGx1, warranty card x1, remote control x1, battery x2, writing pen x2, alarm card x1

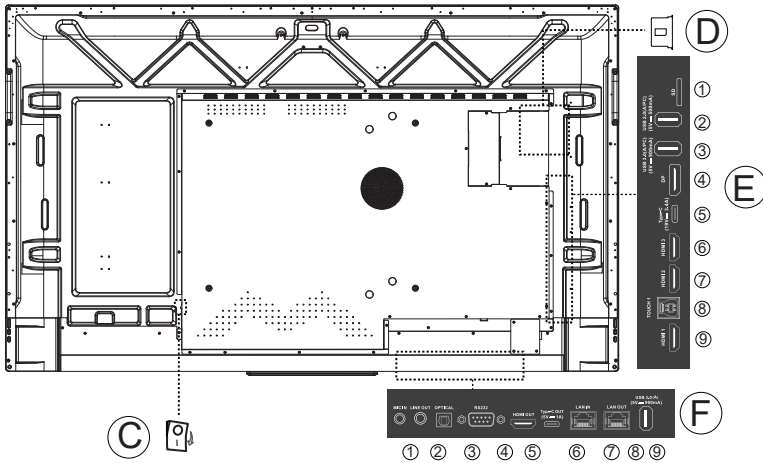
**Sockets**


Note: The location and names of the sockets on the Interactive Flat Panel may vary according to the Interactive Flat Panel model, and some sockets may not be available for some models.




- ① **FRONT Type-C**  
The TYPE C socket can be used to connect to PC or external devices.  
(Maximum supported voltage and current 5V 3A).
- ② **FRONT HDMI**
- ③ **TOUCH 2**  
TOUCH USB and FRONT HDMI cable connected to the same computer.
- ④ **USB 3.0** **USB socket (input)**
- ⑤ **USB 3.0** This socket can be used to connect a USB device.

- ① **RETURN**
- ② **HOME**
- ③ **MENU**
- ④ **VOL+**
- ⑤ **VOL-**
- ⑥ **Button**  
Turns the Interactive Flat Panel on or standby.  
Note: The button is on in standby mode.



**C**  **Button**  
Turn on the power switch.

**D**  **OPS**  
Port ( *Tip: This is an optional module* )

- E**
  - ① **SD**
  - ② **USB 3.0 USB socket (input)**
  - ③ **USB 2.0** This socket can be used to connect a USB device.
  - ④ **DP**
  - ⑤ **Type-C**  
The TYPE C socket can be used to connect to PC or external devices.  
(Maximum supported voltage and current 19V  $\approx$  3.4A).
  - ⑦ **HDMI 1or HDMI 2 or HDMI3 socket (input)** The HDMI (High-Definition Multimedia Interface)  
- Number of HDMI ports may vary.
  - ⑧ **TOUCH 1**  
TOUCH USB and HDMI1/2/3/DP cable connected to the same computer.
- F**
  - ① **MIC IN**
  - ② **LINE OUT**
  - ③ **OPTICAL socket**  
This socket can be used to connect a compatible digital audio receiver.
  - ④ **RS232 socket**  
This socket actually used for factory debugging.
  - ⑤ **HDMI OUT socket**
  - ⑥ **Type-C OUT**  
Maximum supported voltage and current 5V  $\approx$  1A .
  - ⑦ **LAN IN / LAN OUT**
  - ⑧ This socket can be used to connect to external modem or network access equipment.
  - ⑨ **USB 3.0 socket**  
This socket can be used to connect a USB device.

## Precautions

Read all of the instructions before operating the set. Keep these instructions well for future use.

## Product

- Do not block or cover the ventilation openings on the back cover.
- Do not push objects of any kind into this unit through the cabinet slots as they could touch the current carrying parts or short-circuit parts, resulting in fire, electric shock, or damage to the unit.
- Do not attempt to open the cabinet as this may cause damage. There are no parts inside you can service by yourself. Refer all servicing to qualified personnel.
- Do not impact the machine screen with hard pressure as this may damage the machine screen severely.

## Power and Plug

- Unplug the set under the following conditions:
  - If the set will not be used for a long period of time.
  - If the power cord or the power outlet/plug is damaged.
  - Follow the instructions to install and adjust the product. Adjust those controls that are covered in this operating instructions as improper adjustment of other controls may result in damage. If this happens, unplug the set and refer to the service personnel.
  - If the set is subject to impact or has been dropped to have the cabinet damaged.

## Power Cord and Signal Cable

- Do not allow anything to rest on or roll over the power cord and the signal cable.
- Protect the power cord and the signal cable from being trampled.
- Do not overload the power cord or the power outlet.
- Do not expose the power cord and the signal cable to moisture.

## Use Environment

- Do not place the set on an unstable cart, stand, or table.
- Place the set on a place that allows good ventilation.

- Do not use the set near damp, and cold areas. Protect the set from overheating.
- Keep the set away from direct sunlight.
- Apparatus shall not be exposed to dripping or splashing and no objects filled with liquids, such as vases, shall be placed on the apparatus.
- Do not use the set near dust place.

## Cleaning

- Dust the set by wiping the screen and the cabinet with a soft, clean cloth or some special liquid cleaner.
- Do not apply excessive force to the screen when cleaning.
- Do not use water or other chemical cleaner to clean the screen as this may damage the surface of the machine screen.

## Hanging the machine Set on the Wall

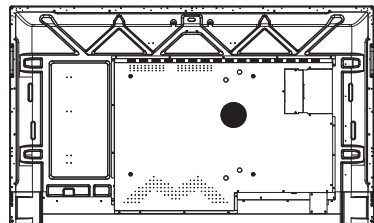
Warning: This operation requires two people.

To ensure a safe installation, observe the following safety notes:

- Check that the wall can support the weight of the machine set and wall mount assembly.
- Follow the mounting instructions provided with the wall mount.
- The machine set must be installed on a vertical wall.
- Make sure to use only screws suitable for the material of the wall.
- Make sure that the machine set cables are placed so that there is not danger of tripping over them.
- The mounting holes on the back of your machine take type **four M8X20** screws.

All other safety instructions about our machine sets are also applicable here.

Note: *Illustrations within this publication are provided for reference only.*



## Switching on

Follow the instructions on this page on how to switch on your machine set and the remote control before going on to following pages describing how to use the channel set-up procedure.

1. Insert two batteries in the remote control.


Precautions on using batteries:

- Only use the battery types specified.
- Make sure you use the correct polarity.
- Do not mix new and used batteries.
- Do not use rechargeable batteries.
- Do not expose batteries to excessive heat such as sunshine, fire or the like, throw them in a fire, recharge them or try to open them, as this could cause them to leak or explode.
- Remove the batteries from the remote control if you are not using it for a long period of time.

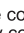
2. Connect the power cable FIRST to the television, THEN to a mains socket.  
(Note: If the power cable is connected to the television, please only connect the power cable to the mains socket.)

- If your machine is connected to an AC supply  
Your machine set should only be connected to an AC supply. It must not be connected to a DC supply. If the plug is detached from the cable, do not, under any circumstances, connect it to a mains socket, as there is a risk of electric shock.
- If your machine is connected to a DC supply  
Your machine set should only be connected to a DC supply. It must not be connected to a AC supply. If the plug is detached from the cable, do not, under any circumstances, connect it to a mains socket, as there is a risk of electric shock.

3. When powered on, the machine will be turned on directly or be in standby.  
Note: For some models, switch the machine on by pressing the power button.

If the power indicator lights up, the machine set is in standby mode. Press the  button on the remote control or on the machine set to turn on the machine.

## Switching off

- To put the machine set into standby mode, press the  button on the remote control or on the machine, the machine set remains powered up, but with low energy consumption.
- To switch off the machine set, unplug the mains socket from the mains outlet.  
Note: For some models, press the power button to switch off the machine set .



## Network Connection

To access the internet, you must subscribe high speed broadband internet service from your internet service provider.

Your machine can be connected to your home network in two ways:

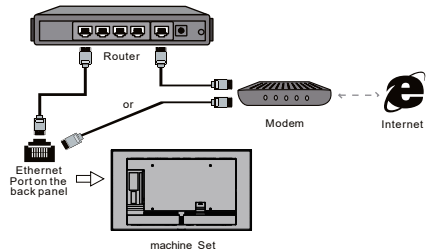
- Wired, using the RJ45 (LAN) connector on the back panel.
- Wireless, using the internal wireless or external wireless USB adapter and your home wireless network.

**Note: This function is not available for certain models. Instructions below are just the usual ways to connect your machine to the wired or wireless network. The connection method may be different depending on your actual network configuration. If you have any questions about your home network, please refer to your ISP (Internet Service Provider).**

### Connecting to a wired network

To connect to a wired network:

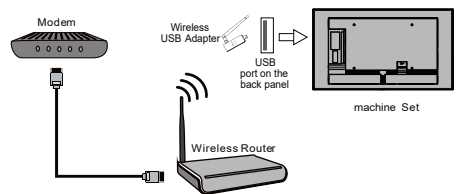
1. Ensure you have:
  - An ethernet cable long enough to reach your machine
  - A router or modem with an available Ethernet port
  - A high-speed internet connection
  - An Ethernet (LAN) port on the back of the machine
2. Connect your ethernet cable to the router and to the Ethernet port on the back of the machine.
3. Use the Network Settings to configure the machine.



### Connecting to a wireless network

To connect to a wireless network:

1. Ensure you have:
  - A router broadcasting a high-speed wireless signal
  - A high-speed internet connection
  - A wireless USB Adapter (not need for a built-in wireless connection).
2. The machine set with Wi-Fi Module.
3. Use the Network menu to configure the machine.



Note: Some models may have internal wireless module, then the wireless USB adapter is unnecessary. Some external wireless adapters cannot be compatible with the machine.

## Troubleshooting

Most problems you encounter with your machine can be corrected by consulting the following troubleshooting list.

### No picture, no sound

1. Check if the fuse or circuit breaker is working.
2. Power plug is in a bad contact with the outlet.
3. Check the signal source.

### Remote control does not work

1. Change the batteries.
2. Batteries are not installed correctly.
3. Main power is not connected.

### No picture, normal sound

Adjust the brightness and contrast.

### Normal picture, no sound

1. Press the **Vol+** button to increase volume.
2. Volume is set to mute, press the mute button to restore sound.
3. Change the sound system.

### Unorderly ripples on the picture

It is usually caused by local interference, such as cars, daylight lamps and hair driers.

### Ignition

Black spots or horizontal streaks appear, or the picture flutters or drifts. This is usually caused by interference from car ignition system, neon lamps, electric drills, or other electrical appliance.

### Radio frequency interference

This interference produces moving ripples or diagonal streaks, and in some case, loss of contrast in the picture. Find out and remove the radio interference source.

### If the machine is crashed

1. Press the **Power** button to turn off machine, then press the **Power** button again to reset machine.
2. Unplug the power cord, then press the **Power** button to reset machine.

*Note: If these 2 methods can not be resolved, please contact the after-sales to solve.*

## **FCC STATEMENT**

1. This device complies with Part 15 of the FCC Rules. Operation is subject to the following two conditions:

(1) This device may not cause harmful interference, and  
(2) This device must accept any interference received, including interference that may cause undesired operation.

2. Changes or modifications not expressly approved by the party responsible for compliance could void the user's authority to operate the equipment.

NOTE: This equipment has been tested and found to comply with the limits for a Class B digital device, pursuant to Part 15 of the FCC Rules. These limits are designed to provide reasonable protection against harmful interference in a residential installation.

This equipment generates uses and can radiate radio frequency energy and, if not installed and used in accordance with the instructions, may cause harmful interference to radio communications. However, there is no guarantee that interference will not occur in a particular installation. If this equipment does cause harmful interference to radio or television reception, which can be determined by turning the equipment off and on, the user is encouraged to try to correct the interference by one or more of the following measures:

Reorient or relocate the receiving antenna.

Increase the separation between the equipment and receiver.

Connect the equipment into an outlet on a circuit different from that to which the receiver is connected.

Consult the dealer or an experienced radio/TV technician for help.

## **Radiation Exposure Statement**

This equipment complies with FCC/IC radiation exposure limits set forth for an uncontrolled environment. This equipment should be installed and operated with minimum distance 20cm between the radiator & your body.

## **IC warning**

- English:

This device contains licence-exempt transmitter(s)/receiver(s) that comply with Innovation, Science and Economic Development Canada's licence-exempt RSS(s). Operation is subject to the following two conditions:

(1) This device may not cause interference.  
(2) This device must accept any interference, including interference that may cause undesired operation of the device.

- French:

L'émetteur/récepteur exempt de licence contenu dans le présent appareil est conforme aux CNR d'Innovation, Sciences et Développement économique Canada applicables aux appareils radio exempts de licence. L'exploitation est autorisée aux deux conditions suivantes :

1) L'appareil ne doit pas produire de brouillage;  
2) L'appareil doit accepter tout brouillage radioélectrique subi, même si le brouillage est susceptible d'en compromettre le fonctionnement.