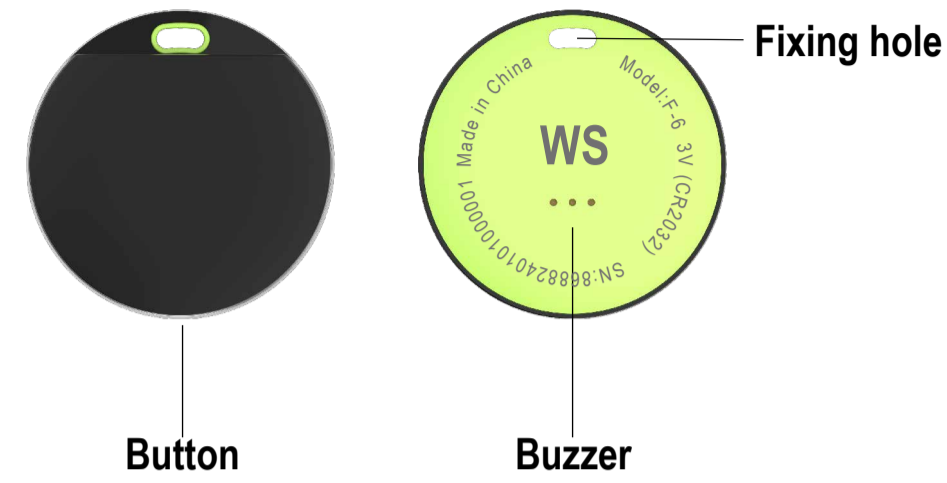


User Manual



Mode:WS Finder

1.Equipment schematic diagram

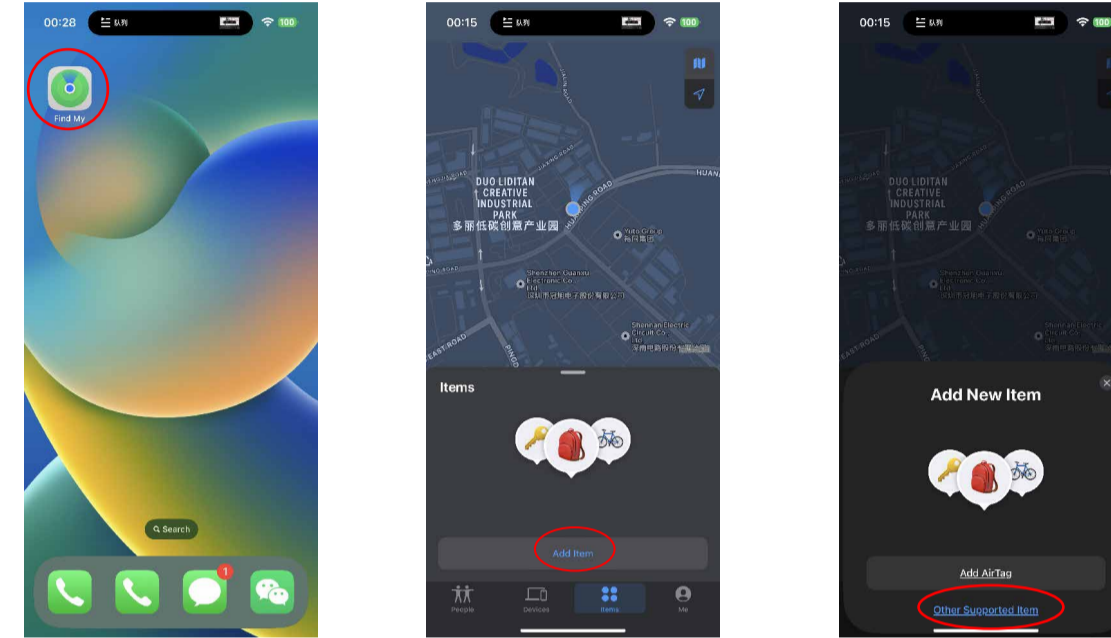


2.Button function description

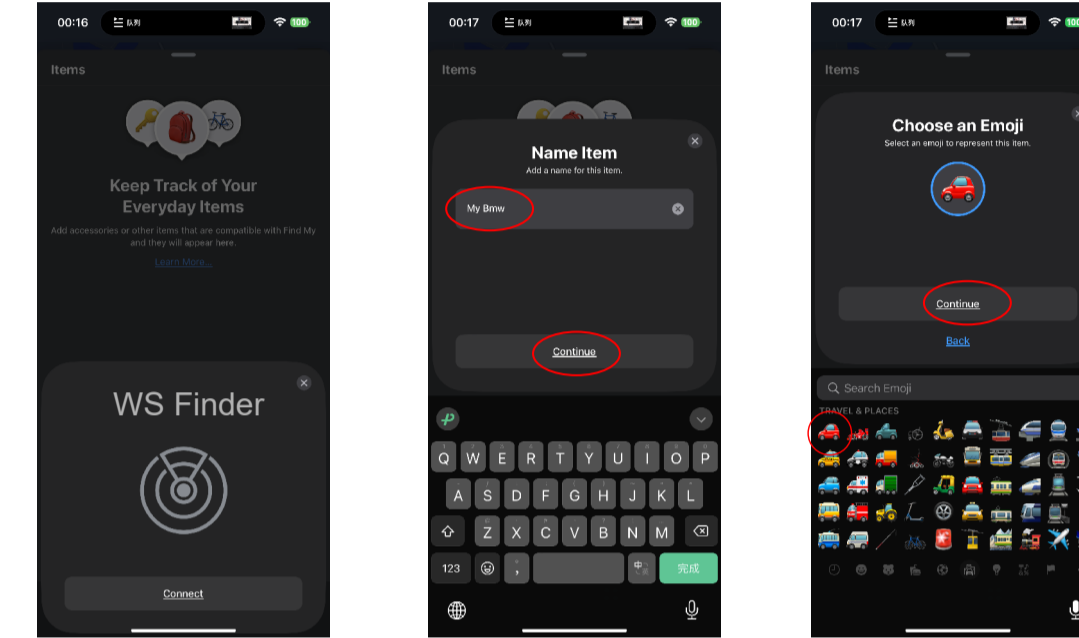
SN	Function	Operation	Button functions
1	Power on	Press the button, until one beep	Release after a "DI" sound
2	Power off	Long press the button, Release after three beeps	Release after "DI DI DI" sound
3	Reset	Long press the button, Release after four beeps	Release after "DI DI DI DI" sound

3.Connection steps

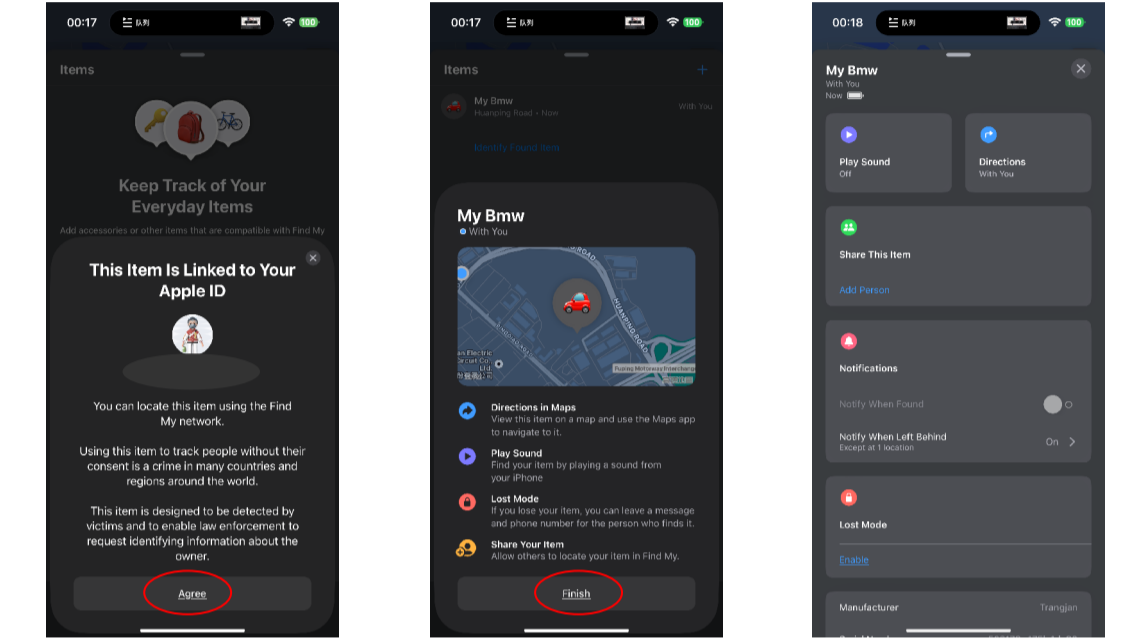
- Power on, Press the button "DI" once and release it, Placed next to the phone.
- Open the "Find my" App on your phone, click on the "Items" menu, and select "Other Supported Items".



- After discovering a new item, click "Connect",
- Change the item name, click "Connect",
- Change the item identification and connect it again.



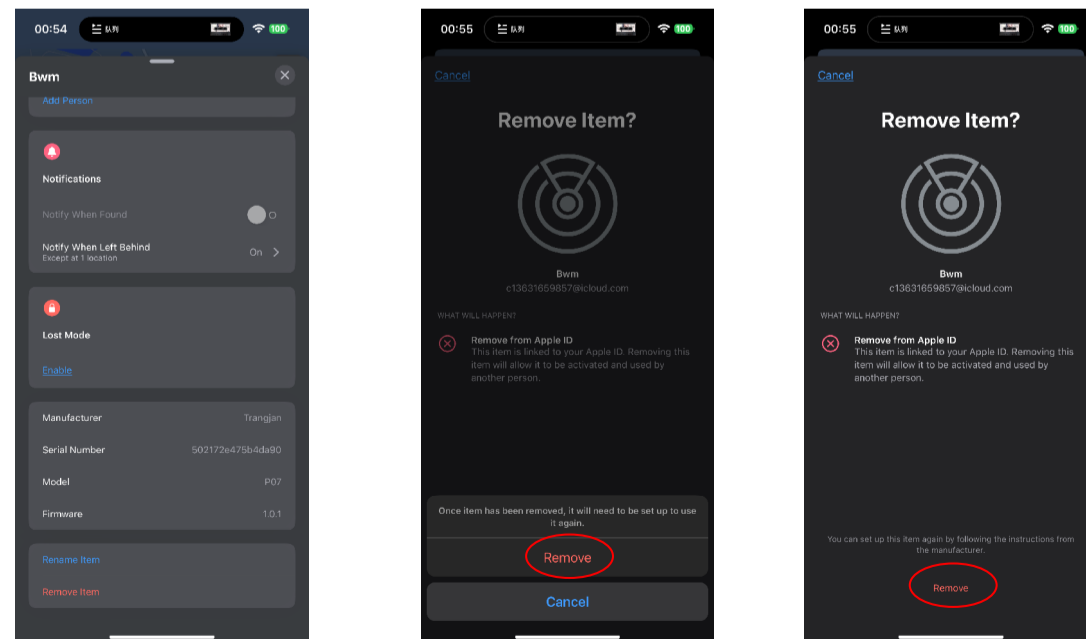
- Click "agree" and finally click "Finish".
- After completion, the following functions can be used



4.Remove item

- On the connected interface, drag to the bottom of the menu and click "Remove".

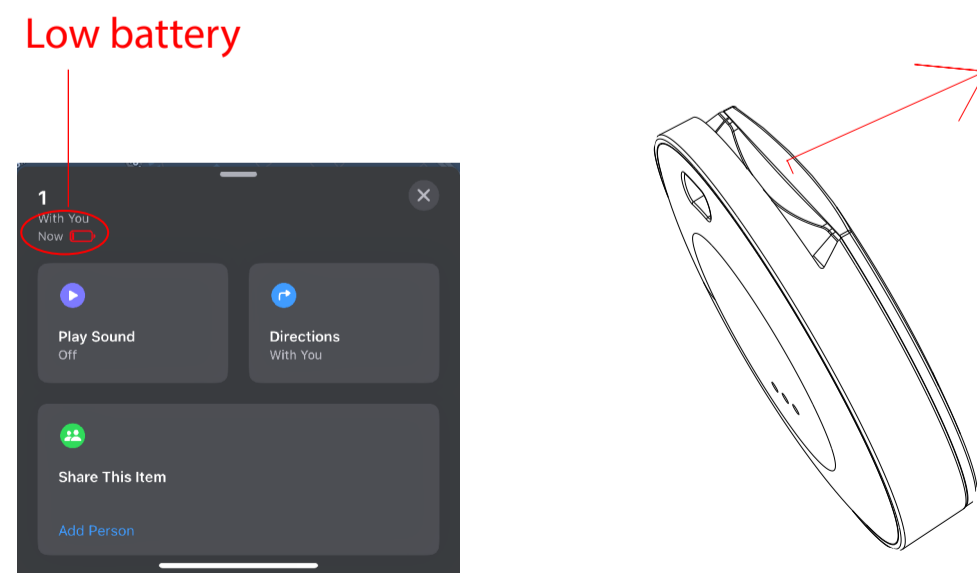
When removing, items can only be placed closest to the phone.



5.Battery replacement steps

When the battery symbol is displayed in red, the battery should be replaced. Remove the front cover.

The battery specification: **CR2032 3V**.

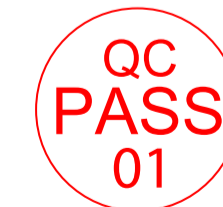


Warranty Service Terms

Warranty service terms:

- The product has any -function problem, can enjoy the warranty service, the warranty period limits 6 months.
- Artificial damage, fall, artificial scratch, no warranty repair card is not within the scope of warranty.
- We are not responsible for the cost of the locks during the warranty period.
- The warranty service must have the warranty card and can be operated according to the requirement, otherwise no warranty.

checker
This product has
passed the inspection



FCC Warning

This device complies with part 15 of the FCC Rules. Operation is subject to the following two conditions: (1) This device may not cause harmful interference, and (2) this device must accept any interference received, including interference that may cause undesired operation. Any Changes or modifications not expressly approved by the party responsible for compliance could void the user's authority to operate the equipment.

This equipment has been tested and found to comply with the limits for a Class B digital device, pursuant to part 15 of the FCC Rules. These limits are designed to provide reasonable protection against harmful interference in a residential installation. This equipment generates uses and can radiate radio frequency energy and, if not installed and used in accordance with the instructions, may cause harmful interference to radio communications. However, there is no guarantee that interference will not occur in a particular installation. If this equipment does cause harmful interference to radio or television reception, which can be determined by turning the equipment off and on, the user is encouraged to try to correct the interference by one or more of the following measures:

- Reorient or relocate the receiving antenna.
- Increase the separation between the equipment and receiver.

- Connect the equipment into an outlet on a circuit different from that to which the receiver is connected.
 - Consult the dealer or an experienced radio/TV technician for help.
- The device has been evaluated to meet general RF exposure requirement. The device can be used in portable exposure condition without restriction.