

G61

FCC Caution:

This device complies with part 15 of the FCC Rules. Operation is subject to the following two conditions: (1) This device may not cause harmful interference, and (2) this device must accept any interference received, including interference that may cause undesired operation.

Any changes or modifications not expressly approved by the party responsible for compliance could void the user's authority to operate the equipment. NOTE: This equipment has been tested and found to comply with the limits for a Class B digital device, pursuant to Part 15 of the FCC Rules. These limits are designed to provide reasonable protection against harmful interference in a residential installation. This equipment generates, uses and can radiate radio frequency energy and, if not installed and used in accordance with the instructions, may cause harmful interference to radio communications. However, there is no guarantee that interference will not occur in a particular installation. If this equipment does cause harmful interference to radio or television reception, which can be determined by turning the equipment off and on, the user is encouraged to try to correct the interference by one or more of the following measures:

- Reorient or relocate the receiving antenna.
 - Increase the separation between the equipment and receiver.
 - Connect the equipment into an outlet on a circuit different from that to which the receiver is connected.
 - Consult the dealer or an experienced radio/TV technician for help.
- The device has been evaluated to meet general RF exposure requirement. The device can be used in portable exposure condition without restriction.

INSTRUCTION

1. Basic parameters

Product model: G61

Battery parameters: 3.7V 2000mAh (does not support fast charging! Please connect to a computer for charging)

Input: 5V 200mA

Connection modes: wired connection, Bluetooth connection (5.0), 2.4G connection

Wireless version: 2.4G, BLE 5.0

Wireless connection distance: 10 meters (in unobstructed open environments)

Charging port: Type-C

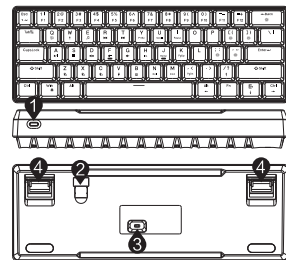
Supported systems: Windows MacOS、 iOS、 Android

Product size: 42mm * 293mm * 102mm

Manual measurement of relevant parameters. In case of any discrepancies, the actual product shall prevail!

Note: The wireless function is only available in the the third mock examination version!

- 1 Type-C interface
- 2 2.4G receiver storage (only three templates)
- 3 Power switch ON/OFF (only three templates)
- 4 Double section foot brace



2. Power indication (only three templates)

When charging, the fn key stays on, when fully charged, the fn key follows the light effect, and the low voltage fn key light flashes.

3. Sleep mechanism (only three templates)

In wireless mode connection, if there is no operation status, the backlight will turn off after 2 minutes, and the keyboard will still be in working state. When any key is triggered, the backlight will light up in a timely manner; After 10 minutes of inactivity, enter deep sleep mode and trigger any key to wake up the keyboard.

English

4. Lighting settings

FN+Space Long press for three seconds to restore factory settings

FN+Back switch lighting effects:

- 1: Constant light mode (default) 2: Breathing mode 3: Press and extinguish as you go
 - 4: Flow with the flow 5: Drip ripples 6: Flowing light overflow 7: Flowing light
 - 8: Dazzling dot color 9: Instant trigger 10: No trace on snow 11: Button ripples
 - 12: Blossoming wealth 13: Running lantern effect 14: Rotating storm
 - 15: Serpentine running horse 16: Abundant star dots 17: Endless flow
 - 18: Diagonal pulling and changing 19: Sinusoidal light wave
- FN+[Light Brightness - FN+] Light Brightness+
FN+; Light speed - FN+'Light speed+

5. Combination key function

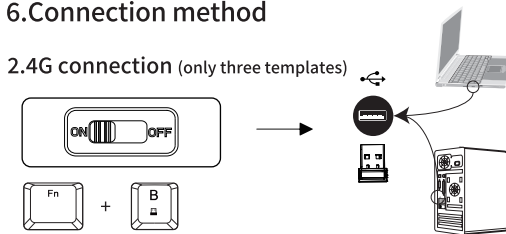
Windows

Combination	Function	Combination	Function
FN+ESC	`	FN+Y	Prtsc
FN+SHIFT+ESC	~	FN+U	Scroll lock
FN+1!	F1	FN+I	Pause
FN+2@	F2	FN+H	Insert
FN+3#	F3	FN+J	Home
FN+4\$	F4	FN+K	PGUP
FN+5%	F5	FN+N	DEL
FN+6^	F6	FN+M	END
FN+7&	F7	FN+,<	PGDN
FN+8*	F8	FN+Ait-R	←
FN+9(F9	FN+⇧	↓
FN+0)	F10	FN+Ctrl-R	→
FN+~_	F11	FN+/?	↑
FN+=+	F12	FN+WIN	Lock WIN and ⇧ keys

FN+Q	switch windows	FN+A	play/pause
FN+W	microphone	FN+S	cease
FN+E	multi-media	FN+D	mute
FN+R	Previous song	FN+F	Vol-
FN+T	Next song	FN+G	Vol+

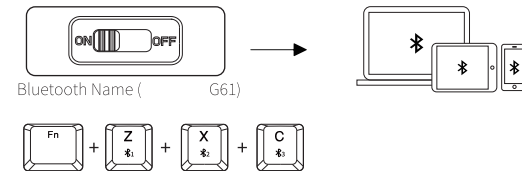
6.Connection method

2.4G connection (only three templates)



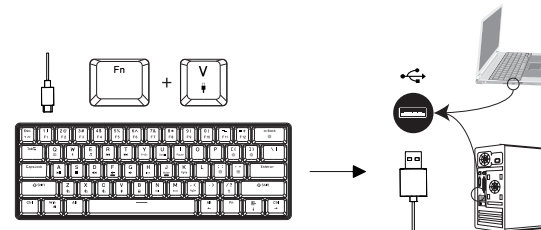
2.4G mode: Insert the dedicated receiver that has been paired with the code, turn the switch to the "ON" state, **FN+B** will enable 2.4G mode, and the keyboard can be used normally.

Bluetooth connectivity(only three templates)



Bluetooth mode: When the switch is turned to the "ON" state, There are three Bluetooth channels: **FN+Z**: Bluetooth 1 **FN+X**: Bluetooth 2 **T**: Bluetooth 3. Turn on the Bluetooth pairing of the device, and the keyboard can be used normally.

Wired



Wired mode: First, insert the connecting cable into the TYPE-C interface, then connect the other end to the computer. Turn on the wired mode with **FN+V** (plug in the wired version), and the keyboard can be used normally.

7.List of Items

1. One keyboard
2. One TYPE-C cable
3. 2.4G receiver (only three templates)
4. One instruction manual



G61 keyboard



TYPE-C charging cable



2.4G receiver

Manufacturer: Jiangxi Jichi Technology Co., Ltd
Building 3, Godfrey Industrial Park, Lvba Avenue, Qingyuan District, J'an City, Jiangxi Province
Contact phone number: 400-1191-696
Website: www.eleadn.cn
Product execution standard number: Keyboard GB/T 14081-2010
Attention: Product images are for reference only and may differ from the actual product. Please refer to the actual product. We apologize for any inconvenience caused!

