

Product specification

Quick Reference Date

	Antenna module on the system board	
Frequenc Range	2400 ~ 2500MHz	
Gain (dBi)	2.7 (Peak Gain)	

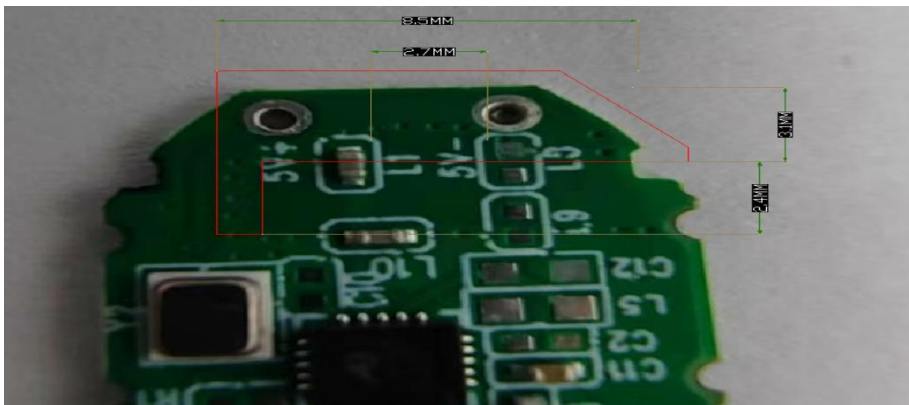
Huizhou Jinhui Xingwang electronic Technology Co., LTD

105, Floor 1, Building 1, Plant No. 1 Park, Licheng Industrial Zone, Shuikou Office, Huicheng District, Huizhou City

0755-28332114

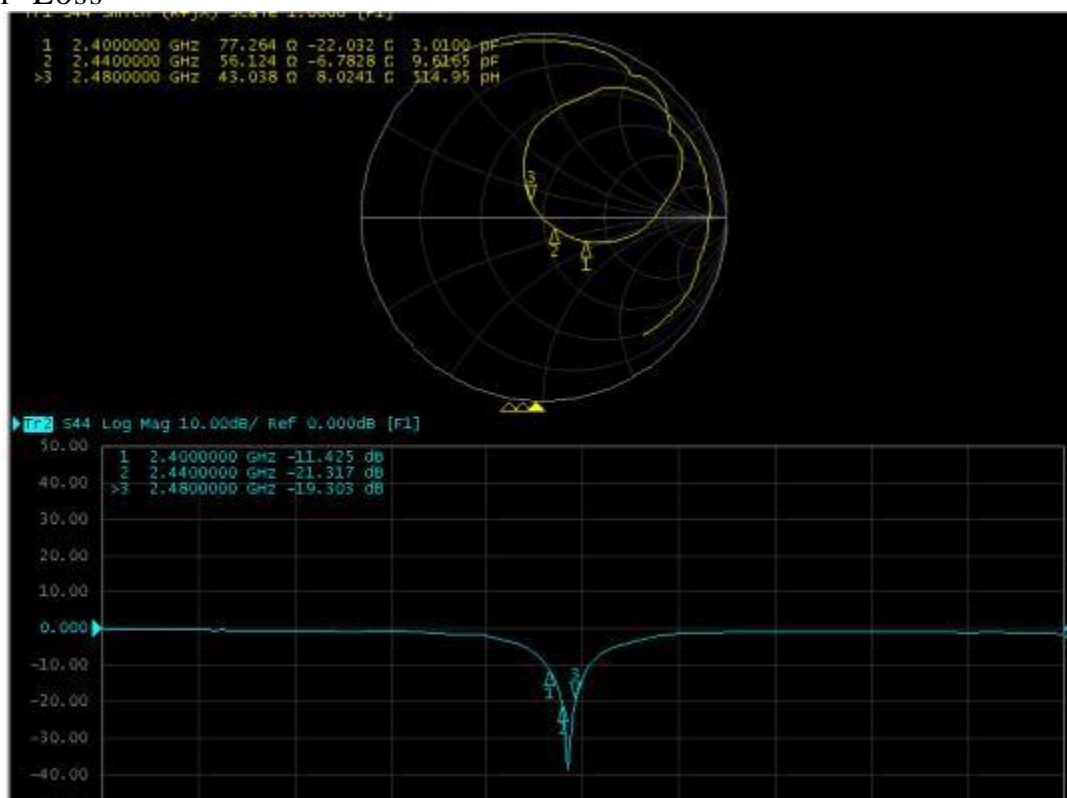
All the technical data and information contained herein are subject to change without prior notice

Antenna Layout & module on the system board

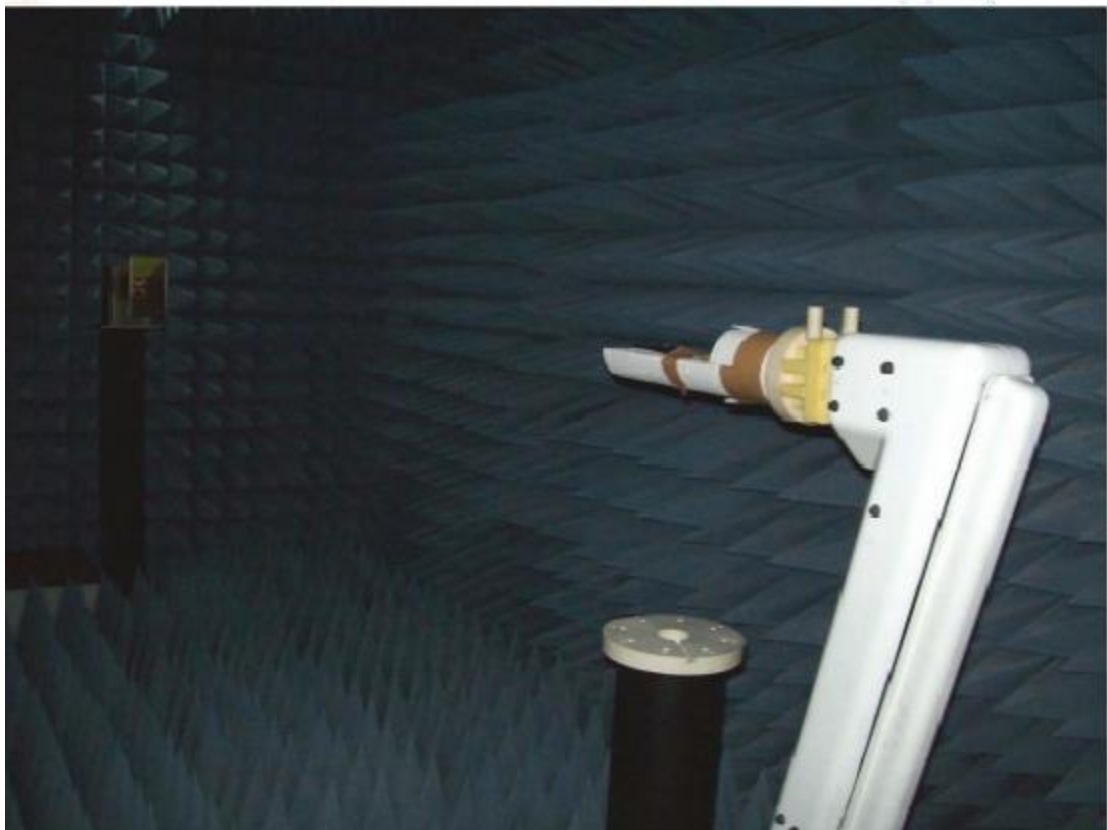
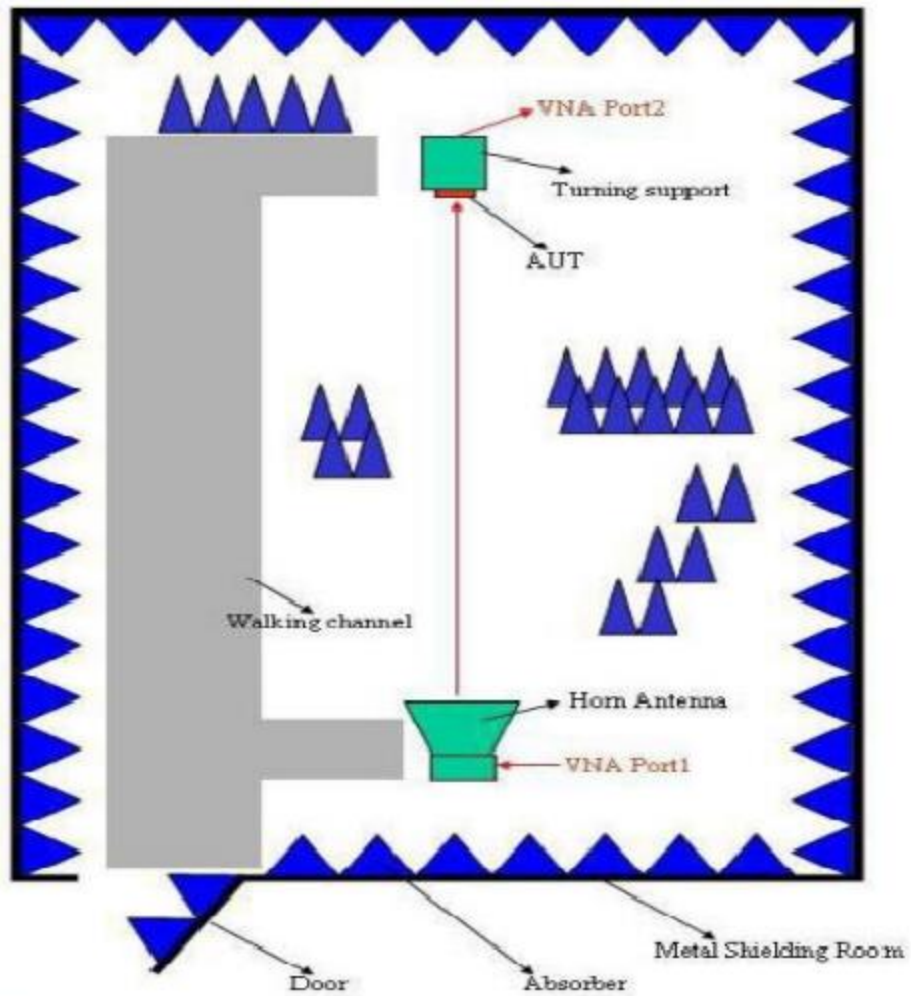


Antenna Gain

Return Loss

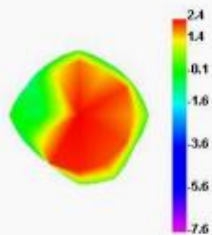


The Environment of Antenna Radiation Pattern



Radiation

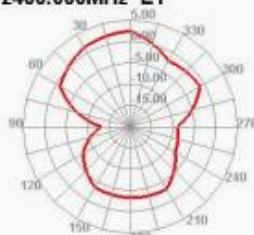
2400.000MHz



2400.000MHz H



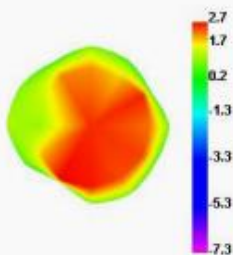
2400.000MHz E1



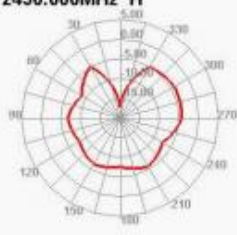
2400.000MHz E2



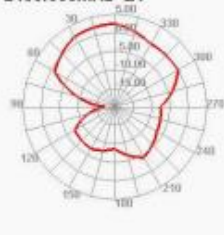
2450.000MHz



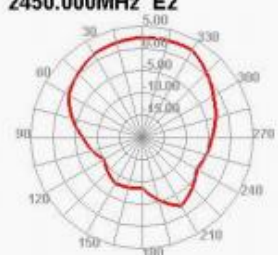
2450.000MHz H



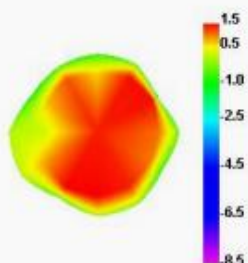
2450.000MHz E1



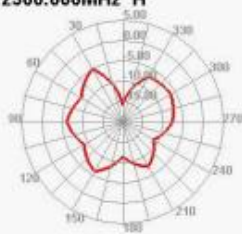
2450.000MHz E2



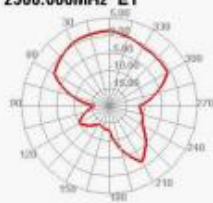
2500.000MHz



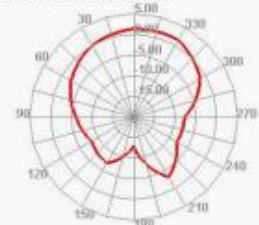
2500.000MHz H



2500.000MHz E1



2500.000MHz E2



Frequency(MHz)	2400	2450	2500
Efficiency(dB)	-0.91	-0.61	-1.01
Efficiency(%)	62	65	60
Gain(dBi)	2.4	2.7	1.5