



SAR Test Report

For

Applicant Name: SHENZHEN VELAIG ONE TECHNOLOGY CO., LITD.
Address: B4-807, Internet e Era, No.4 Zhongxing Road, Ma' an Tang Community, Bantian Street, Longgang District, Shenzhen
EUT Name: Smart Watch (TD-LTE Wireless Data Terminal)
Model Number: TL66

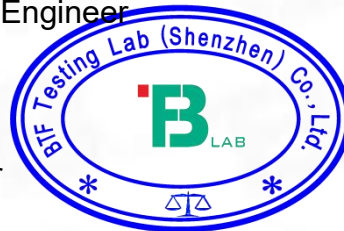
Issued By

Company Name: BTF Testing Lab (Shenzhen) Co., Ltd.
Address: F101, 201 and 301, Building 1, Block 2, Tantou Industrial Park, Tantou Community, Songgang Street, Bao'an District, Shenzhen, China

Report Number: BTF240403R00201
47 CFR Part 2.1093 IEEE C95.1-2019
Test Standards: EN IEC/IEEE 62209-1528: 2021 KDB447498 D04
KDB865664 D01 KDB865664 D02 KDB941225 D05
KDB648474 D04 KDB690783 D01
FCC ID: 2BFM9-TL66
Test Conclusion: Pass
Test Date: 2024-04-10
Date of Issue: 2024-04-11

Prepared By: Amenda Zhong
Amenda Zhong / Project Engineer
Date: 2024-04-11

Approved By: Ryan.CJ
Ryan.CJ / EMC Manager
Date: 2024-04-11



Note: All the test results in this report only related to the testing samples. Which can be duplicated completely for the legal use with approval of applicant; it shall not be reproduced except in full without the written approval of BTF Testing Lab (Shenzhen) Co., Ltd., All the objections should be raised within thirty days from the date of issue. To validate the report, you can contact us.

Revision History		
Version	Issue Date	Revisions Content
R_V0	2024-04-11	Original
<i>Note:</i>	<i>Once the revision has been made, then previous versions reports are invalid.</i>	

Table of Contents

1. Introduction	4
1.1 Identification of Testing Laboratory	4
1.2 Identification of the Responsible Testing Location	4
1.3 Laboratory Condition	4
1.4 Announcement	4
2. Product Information	5
2.1 Application Information	5
2.2 Manufacturer Information	5
2.3 Factory Information	5
2.4 General Description of Equipment under Test (EUT)	5
2.5 Equipment under Test Ancillary Equipment	5
2.6 Technical Information	5
3. Summary of Test Results	6
3.1 Test Standards	6
3.2 Device Category and SAR Limit	7
3.3 Test Result Summary	7
3.4 Test Uncertainty	8
4. Measurement System	10
4.1 Specific Absorption Rate (SAR) Definition	10
4.2 MVG SAR System	10
5. System Verification	14
5.1 Purpose of System Check	14
5.2 System Check Setup	15
6. TEST POSITION CONFIGURATIONS	15
6.1 Head Exposure Conditions	15
6.2 Body-worn Position Conditions	17
6.3 Hotspot Mode Exposure Position Conditions	18
6.4 Product Specific 10g Exposure Consideration	18
7. Measurement Procedure	19
7.1 Measurement Process Diagram	19
7.2 SAR Scan General Requirement	20
7.3 Measurement Procedure	21
7.4 Area & Zoom Scan Procedure	21
8. Conducted RF Output Power	22
8.1 LTE	22
8.2 Bluetooth	25
9. Test Exclusion Consideration	26
9.1 SAR Test Exclusion Consideration Table	26
10. Test Result	27
11. SAR Measurement Variability	28
12. Simultaneous Transmission	29
12.1 Simultaneous Transmission Mode Considerations	29
12.2 Sum SAR of Simultaneous Transmission	29
13. Test Equipment List	30
ANNEX A Simulating Liquid Verification Result	31
ANNEX B System Check Result	31
ANNEX C Test Data	34
ANNEX D SAR Test Setup Photos	42
ANNEX E EUT External and Internal Photos	43
ANNEX F Calibration Information	43

1. Introduction

1.1 Identification of Testing Laboratory

Company Name:	BTF Testing Lab (Shenzhen) Co., Ltd.
Address:	F101, 201 and 301, Building 1, Block 2, Tantou Industrial Park, Tantou Community, Songgang Street, Bao'an District, Shenzhen, China
Phone Number:	+86-0755-23146130
Fax Number:	+86-0755-23146130

1.2 Identification of the Responsible Testing Location

Test Location:	BTF Testing Lab (Shenzhen) Co., Ltd.
Address:	F101, 201 and 301, Building 1, Block 2, Tantou Industrial Park, Tantou Community, Songgang Street, Bao'an District, Shenzhen, China
Description:	All measurement facilities used to collect the measurement data are located at F101,201 and 301, Building 1, Block 2, Tantou Industrial Park, Tantou Community, Songgang Street, Bao'an District, Shenzhen, China
FCC Registration Number	518915
Designation Number	CN1330

1.3 Laboratory Condition

Ambient Temperature:	21°C to 25°C
Ambient Relative Humidity:	48% to 59%
Ambient Pressure:	100 kPa to 102 kPa

1.4 Announcement

- (1) The test report reference to the report template version v0.
- (2) The test report is invalid if not marked with the signatures of the persons responsible for preparing, reviewing and approving the test report.
- (3) The test report is invalid if there is any evidence and/or falsification.
- (4) This document may not be altered or revised in any way unless done so by BTF and all revisions are duly noted in the revisions section.
- (5) Content of the test report, in part or in full, cannot be used for publicity and/or promotional purposes without prior written approval from the laboratory.
- (6) The laboratory is only responsible for the data released by the laboratory, except for the part provided by the applicant.

2. Product Information

2.1 Application Information

Company Name:	SHENZHEN VELAIG ONE TECHNOLOGY CO., LITD.
Address:	B4-807, Internet e Era, No.4 Zhongxing Road, Ma' an Tang Community, Bantian Street, Longgang District, Shenzhen

2.2 Manufacturer Information

Company Name:	SHENZHEN VELAIG ONE TECHNOLOGY CO., LITD.
Address:	B4-807, Internet e Era, No.4 Zhongxing Road, Ma' an Tang Community, Bantian Street, Longgang District, Shenzhen

2.3 Factory Information

Company Name:	SHENZHEN VELAIG ONE TECHNOLOGY CO., LITD.
Address:	B4-807, Internet e Era, No.4 Zhongxing Road, Ma' an Tang Community, Bantian Street, Longgang District, Shenzhen

2.4 General Description of Equipment under Test (EUT)

EUT Name	Smart Watch (TD-LTE Wireless Data Terminal)
Under Test Model Name	TL66
Sample No.	BTFSN240403003/1

2.5 Equipment under Test Ancillary Equipment

Ancillary Equipment 1	Rechargeable Li-ion Battery	
	Capacity	260mAh
	Rated Voltage	3.7V

2.6 Technical Information

Network and Wireless connectivity	4G Network TDD LTE Band 38/41 BT (EDR+BLE)
-----------------------------------	---

The requirement for the following technical information of the EUT was tested in this report:

Operating Mode	LTE, Bluetooth	
Frequency Range	LTE Band 38	2570 ~ 2620 MHz
	LTE Band 41	2496 ~ 2690 MHz
	Bluetooth	2402 ~ 2480 MHz
Antenna Type	Integrated Antenna	
Hotspot Function	Not Support	
Power Reduction	Not Support	
Exposure Category	General Population/Uncontrolled exposure	
EUT Stage	Portable Device	
Product	Type	
	<input type="checkbox"/> Production unit	<input checked="" type="checkbox"/> Identical prototype

3. Summary of Test Results

3.1 Test Standards

No.	Identity	Document Title
1	47 CFR Part 2.1093	Radiofrequency radiation exposure evaluation: portable devices
2	EN IEC/IEEE 62209-1528: 2021	Measurement procedure for the assessment of specific absorption rate of human exposure to radio frequency fields from hand-held and body-worn wireless communication devices – Human models, instrumentation and procedures (Frequency range of 4 MHz to 10 GHz)
3	IEEE C95.1-2019	IEEE Standard for Safety Levels with Respect to Human Exposure to Electric, Magnetic, and Electromagnetic Fields, 0 Hz to 300 GHz
4	KDB447498 D04	Interim General RF Exposure Guidance v01
5	KDB865664 D01	SAR measurement 100MHz to 6GHz v01r04
6	KDB865664 D02	RF Exposure Reporting v01r02
7	KDB941225 D05	SAR for LTE Devices v02r05
8	KDB648474 D04	Handset SAR v01r03
9	KDB690783 D01	SAR Listings on Grant v01r03

3.2 Device Category and SAR Limit

This device belongs to portable device category because its radiating structure is allowed to be used within 20 centimeters of the body of the user. Limit for General Population/Uncontrolled exposure should be applied for this device, it is 1.6 W/kg as averaged over any 1 gram of tissue.

Body Position	SAR Value (W/Kg)	
	General Population/ Uncontrolled Exposure	Occupational/ Controlled Exposure
Whole-Body SAR (averaged over the entire body)	0.08	0.4
Partial-Body SAR (averaged over any 1 gram of tissue)	1.60	8.0
SAR for hands, wrists, feet and ankles (averaged over any 10 grams of tissue)	4.0	20.0

NOTE:
General Population/Uncontrolled Exposure: Locations where there is the exposure of individuals who have no knowledge or control of their exposure. General population/uncontrolled exposure limits are applicable to situations in which the general public may be exposed or in which persons who are exposed as a consequence of their employment may not be made fully aware of the potential for exposure or cannot exercise control over their exposure. Members of the general public would come under this category when exposure is not employment-related; for example, in the case of a wireless transmitter that exposes persons in its vicinity.
Occupational/Controlled Exposure: Locations where there is exposure that may be incurred by persons who are aware of the potential for exposure. In general, occupational/controlled exposure limits are applicable to situations in which persons are exposed as a consequence of their employment, who have been made fully aware of the potential for exposure and can exercise control over their exposure. This exposure category is also applicable when the exposure is of a transient nature due to incidental passage through a location where the exposure levels may be higher than the general population/uncontrolled limits, but the exposed person is fully aware of the potential for exposure and can exercise control over his or her exposure by leaving the area or by some other appropriate means.

3.3 Test Result Summary

The maximum results of Specific Absorption Rate (SAR) found during test as follows:

<Highest Reported standalone SAR Summary>

Frequency Band		Maximum Reported SAR (W/kg) 1 g	Maximum Reported SAR (W/kg) 10 g
		Next-to-mouth SAR (Separation 10 mm)	Wrist-worn SAR (Separation 0 mm)
WWAN	LTE FDD Band 38	0.051	0.361
	LTE FDD Band 40	0.024	0.445
Limits (W/kg)		1.6	4.0
Test Verdict		Pass	

<Highest Reported Simultaneous SAR>

Exposure Position	Simultaneous Configuration	Highest Reported Simultaneous Transmission SAR (W/kg)	Limit (W/kg)	Verdict
Next-to-mouth SAR (Separation 10 mm)	LTE Band 38 + BT	0.080	1.6	Pass
Wrist-worn SAR (Separation 0 mm)	LTE Band 41 + BT	0.482	4.0	Pass

3.4 Test Uncertainty

3.4.1 Measurement uncertainty evaluation for SAR test

Measurement uncertainty evaluation for SAR test (300MHz to 6GHz)

Uncertainty Component	Tol (+-%)	Prob. Dist.	Div.	Ci (1g)	Ci (10g)	1g Ui (+-%)	10 g Ui (+-%)	Vi veff
Measurement System								
Probe calibration	5.8	N	1	1	1	5.80	5.80	∞
Axial Isotropy	3.5	R	√3	√0.5	√0.5	1.43	1.43	∞
Hemispherical Isotropy	5.9	R	√3	√0.5	√0.5	2.41	2.41	∞
Boundary effect	1.0	R	√3	1	1	0.58	0.58	∞
Linearity	4.7	R	√3	1	1	2.71	2.71	∞
System detection limits	1.0	R	√3	1	1	0.58	0.58	∞
Modulation response	3.0	R	√3	1	1	1.73	1.73	∞
Readout Electronics	0.5	N	1	1	1	0.50	0.50	∞
Response Time	0	R	√3	1	1	0.00	0.00	∞
Integration Time	1.4	R	√3	1	1	0.81	0.81	∞
RF ambient Conditions - Noise	3.0	R	√3	1	1	1.73	1.73	∞
RF ambient Conditions - Reflections	3.0	R	√3	1	1	1.73	1.73	∞
Probe positioner Mechanical Tolerance	1.4	R	√3	1	1	0.81	0.81	∞
Probe positioning with respect to Phantom Shell	1.4	R	√3	1	1	0.81	0.81	∞
Extrapolation, interpolation and integration Algorithms for Max. SAR Evaluation	2.3	R	√3	1	1	1.33	1.33	∞
Test sample Related								
Test sample positioning	2.6	N	1	1	1	2.60	2.60	11
Device Holder Uncertainty	3.0	N	1	1	1	3.00	3.00	7
Output power Variation - SAR drift measurement	5.0	R	√3	1	1	2.89	2.89	∞
SAR scaling	2.0	R	√3	1	1	1.15	1.15	∞
Phantom and Tissue Parameters								
Phantom Shell Uncertainty - Shape, Thickness and Permittivity	4	R	√3	1	1	2.31	2.31	∞
Uncertainty in SAR correction for deviation in permittivity and conductivity	2.0	N	1	1	0.84	2.00	1.68	∞
Liquid conductivity measurement	4.0	N	1	0.78	0.71	3.12	2.84	5
Liquid permittivity measurement	5.0	N	1	0.23	0.26	1.15	1.30	5
Liquid Conductivity - Temperature Uncertainty	2.5	R	√3	0.78	0.71	1.13	1.02	∞
Liquid permittivity - Temperature Uncertainty	2.5	R	√3	0.23	0.26	0.33	0.38	∞
Combined Standard Uncertainty		RSS				10.47	10.34	
Expanded Uncertainty (95% Confidence interval)		k				20.95	20.69	

* This uncertainty represents an expanded uncertainty expressed at approximately the 95% confidence level using a coverage factor of k=2.

3.4.2 Measurement uncertainty evaluation for system check

Uncertainty Component	Tol (+- %)	Prob. Dist.	Div.	Ci (1g)	Ci (10 g)	1g Ui (+-%)	10 g Ui (+-%)	Vi veff
Measurement System								
Probe calibration	5.8	N	1	1	1	5.80	5.80	∞
Axial Isotropy	3.5	R	√3	1	1	2.02	2.02	∞
Hemispherical Isotropy	5.9	R	√3	0	0	0.00	0.00	∞
Boundary effect	1	R	√3	1	1	0.58	0.58	∞
Linearity	4.7	R	√3	1	1	2.71	2.71	∞
System detection limits	1	R	√3	1	1	0.58	0.58	∞
Modulation response	0	N	√3	0	0	0.00	0.00	∞
Readout Electronics	0.5	N	1	1	1	0.50	0.50	∞
Response Time	0	R	√3	0	0	0.00	0.00	∞
Integration Time	1.4	R	√3	0	0	0.00	0.00	∞
RF ambient Conditions - Noise	3	R	√3	1	1	1.73	1.73	∞
RF ambient Conditions - Reflections	3	R	√3	1	1	1.73	1.73	∞
Probe positioner Mechanical Tolerance	1.4	R	√3	1	1	0.81	0.81	∞
Probe positioning with respect to Phantom Shell	1.4	R	√3	1	1	0.81	0.81	∞
Extrapolation, interpolation and integration Algorithms for Max. SAR Evaluation	2.3	R	√3	1	1	1.33	1.33	∞
Dipole								
Deviation of experimental source from numerical source	5	N	1	1	1	5.00	5.00	∞
Input Power and SAR drift measurement	0.5	R	√3	1	1	0.29	0.29	∞
Dipole Axis to Liquid Dist.	2.0	R	√3	1	1	1.15	1.15	∞
Phantom and Tissue Parameters								
Phantom Shell Uncertainty - Shape, Thickness and Permittivity	4	R	√3	1	1	2.31	2.31	∞
Uncertainty in SAR correction for deviation in permittivity and conductivity	2.0	N	1	1	0.84	2.00	1.68	∞
Liquid conductivity measurement	4	N	1	0.78	0.71	3.12	2.84	5
Liquid permittivity measurement	5.0	N	1	0.23	0.26	1.15	1.30	5
Liquid Conductivity - Temperature Uncertainty	2.5	R	√3	0.78	0.71	1.13	1.02	∞
Liquid permittivity - Temperature Uncertainty	2.5	R	√3	0.23	0.26	0.33	0.38	∞
Combined Standard Uncertainty		RSS				10.16	10.03	
Expanded Uncertainty (95% Confidence interval)		k				20.32	20.06	

4. Measurement System

4.1 Specific Absorption Rate (SAR) Definition

SAR is related to the rate at which energy is absorbed per unit mass in an object exposed to a radio field. The SAR distribution in a biological body is complicated and is usually carried out by experimental techniques or numerical modeling. The standard recommends limits for two tiers of groups, occupational/controlled and general population/uncontrolled, based on a person's awareness and ability to exercise control over his or her exposure. In general, occupational/controlled exposure limits are higher than the limits for general population/uncontrolled.

The SAR definition is the time derivative (rate) of the incremental energy (dW) absorbed by (dissipated in) an incremental mass (dm) contained in a volume element (dv) of a given density (ρ). The equation description is as below:

$$SAR = \frac{d}{dt} \left(\frac{dW}{dm} \right) = \frac{d}{dt} \left(\frac{dW}{\rho dv} \right)$$

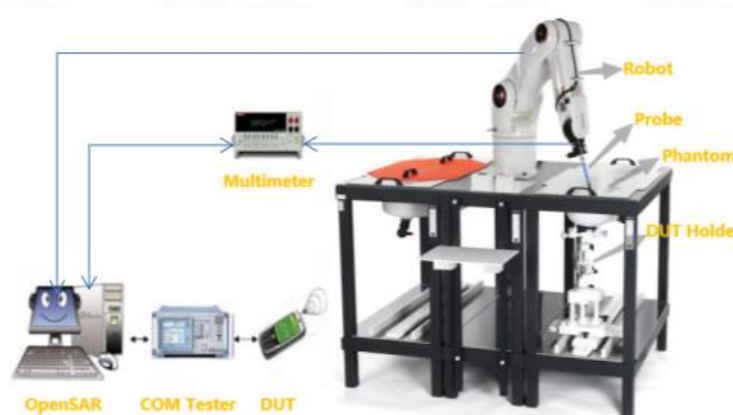
SAR is expressed in units of Watts per kilogram (W/kg) SAR measurement can be related to the electrical field in the tissue by

$$SAR = \frac{\sigma E^2}{\rho}$$

Where: σ is the conductivity of the tissue,
 ρ is the mass density of the tissue and E is the RMS electrical field strength.

4.2 MVG SAR System

4.2.1 SAR system diagram



4.2.2 Robot



- A standard high precision 6-axis robot (Denso) with teaches pendant with Scanning System
- It must be able to scan all the volume of the phantom to evaluate the tridimensional distribution of SAR.
 - Must be able to set the probe orthogonal of the surface of the phantom ($\pm 30^\circ$).
 - Detects stresses on the probe and stop itself if necessary to keep the integrity of the probe.

4.2.3 E-Field Probe

For the measurements, the Specific Dosimetric SSE2 E-Field Probe with following specifications is used:

- Dynamic range: 0.01-100 W/kg
- Tip diameter: 2mm for SSE2
- Distance between probe tip and sensor centre: 1mm for SSE2
- Distance between sensor centre and the inner phantom surface: 2mm for $f \geq 4\text{GHz}$.
- Probe linearity: $< 0.25\text{dB}$.
- Axial Isotropy: $< 0.25\text{dB}$.
- Spherical Isotropy: $< 0.50\text{dB}$.
- Calibration range: 150 to 6000 MHz for head & body simulating liquid
- Angle between probe axis (evaluation axis) and surface normal line: less than 20° .



4.2.4 Phantoms

SAM Phantom

For the measurements the Specific Anthropomorphic Mannequin (SAM) defined by the IEEE SCC-34/SC2 group is used. The probe scanning of the E-Field is done in the 2 halves of the normalized head. The normalized shape of the phantom corresponds to the dimensions of 90% of an adult head size. It enables the dosimetric evaluation of left and right-hand phone usage and includes an additional flat phantom part for the simplified body performance check. The phantom set-up includes a cover, which prevents the evaporation of the liquid.



SAM Phantom

The thickness of the phantom amounts to $2\text{ mm} \pm 0.2\text{ mm}$. The materials for the phantom do not affect the radiation of the device under test (DUT) : $\epsilon_r' < 5$
The head is filled with tissue simulating liquid. The hand do not have to be modeled.

TWIN SAM phantom

	Mechanical	Electrical	
Overall thickness	$2 \pm 0.2\text{ mm}$ (except ear area)	Relative permittivity	3.4
Dimensions	1000 mm(L) x 500 mm(W) x 200 mm(H)	Loss tangent	0.02
Maximum volume	27 L		
Material	Fiberglass based		

ELLIPTICAL Phantom

The phantom is for Body performance check filled with tissue-equivalent liquid to a depth of at least 150 mm, whose shell material is resistant to damage or reaction with tissue-equivalent liquid chemicals.



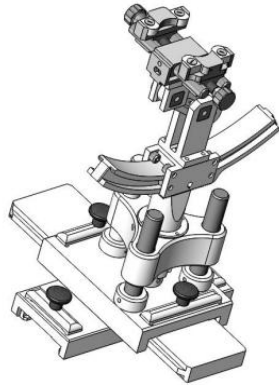
ELLI Phantom

The shape of the phantom is an ellipse with length $600\text{ mm} \pm 5\text{ mm}$ and width $400\text{ mm} \pm 5\text{ mm}$. The phantom shell is made of low-loss and low-permittivity material, having loss tangent $\tan \delta \leq 0.05$ and relative permittivity:
 $\epsilon_r' \leq 5$ for $f \leq 3\text{ GHz}$
 $3 \leq \epsilon_r' \leq 5$ for $f > 3\text{ GHz}$
 The thickness of the bottom-wall of the flat phantom is 2.0 mm with a tolerance of $\pm 0.2\text{ mm}$.

Technical & mechanical characteristics

Shell thickness	$2\text{ mm} \pm 0.2\text{ mm}$
Filling volume	25 L
Dimensions	600 mm x 400 mm x 200mm
Permittivity	4.4
Loss tangent	0.017

4.2.5 Device Holder



System Material	Permittivity	Loss tangent
Delrin	3.7	0.005

System Material	Permittivity	Loss tangent
PMMA	2.9	0.028

(The positioning system allows obtaining cheek and tilting position with a very good accuracy. In compliance with CENELEC, the tilt angle uncertainty is lower than 1°.)

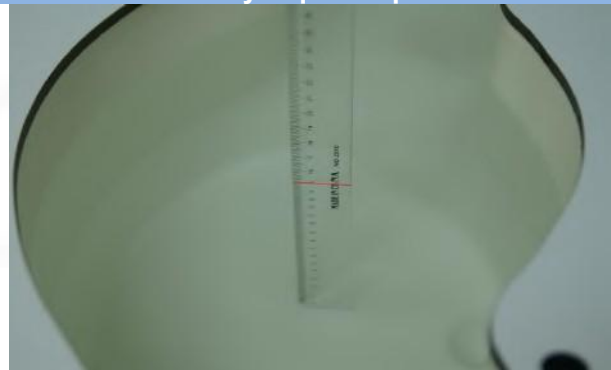
4.2.6 Simulating Liquid

For SAR measurement of the field distribution inside the phantom, the phantom must be filled with homogeneous tissue simulating liquid to a depth of at least 15 cm. For head SAR testing, the liquid height from the ear reference point (ERP) of the phantom to the liquid top surface is larger than 15 cm. For body SAR testing, the liquid height from the center of the flat phantom to the liquid top surface is larger than 15 cm. The nominal dielectric values of the tissue simulating liquids in the phantom and the tolerance of 5%.

Head Liquid Depth



Body Liquid Depth



The following table gives the recipes for tissue simulating liquid and the theoretical Conductivity/Permittivity.

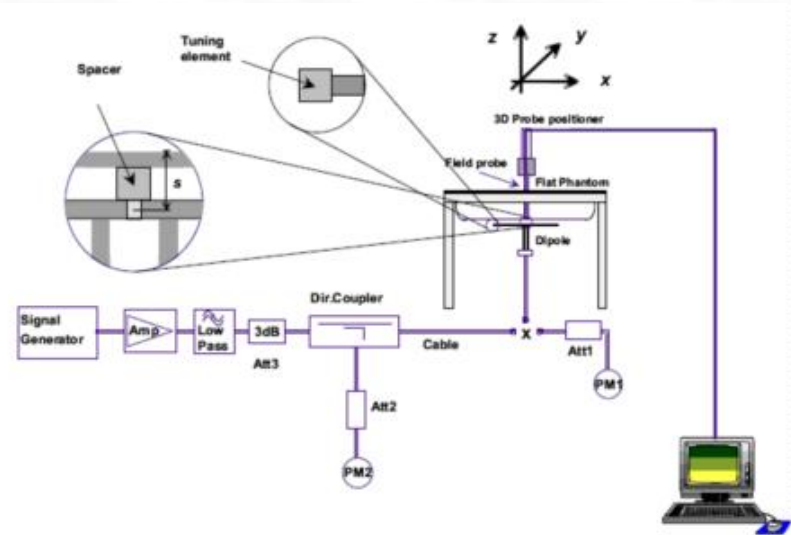
Head (Reference IEEE1528)								
Frequency (MHz)	Water (%)	Sugar (%)	Cellulose (%)	Salt (%)	Preventol (%)	DGBE (%)	Conductivity σ (S/m)	Permittivity ϵ
750	41.1	57.0	0.2	1.4	0.2	0	0.89	41.9
835	40.3	57.9	0.2	1.4	0.2	0	0.90	41.5
900	40.3	57.9	0.2	1.4	0.2	0	0.97	41.5
1800, 1900, 2000	55.2	0	0	0.3	0	44.5	1.4	40.0
2450	55.0	0	0	0.1	0	44.9	1.80	39.2
2600	54.9	0	0	0.1	0	45.0	1.96	39.0
Frequency (MHz)	Water (%)	Hexyl Carbitol (%)			Triton X-100 (%)		Conductivity σ (S/m)	Permittivity ϵ
5200	62.52	17.24			17.24		4.66	36.0
5800	62.52	17.24			17.24		5.27	35.3
Body (From instrument manufacturer)								
Frequency (MHz)	Water (%)	Sugar (%)	Cellulose (%)	Salt (%)	Preventol (%)	DGBE (%)	Conductivity σ (S/m)	Permittivity ϵ
750	51.7	47.2	0	0.9	0.1	0	0.96	55.5
835	50.8	48.2	0	0.9	0.1	0	0.97	55.2
900	50.8	48.2	0	0.9	0.1	0	1.05	55.0
1800, 1900, 2000	70.2	0	0	0.4	0	29.4	1.52	53.3
2450	68.6	0	0	0.1	0	31.3	1.95	52.7
2600	68.2	0	0	0.1	0	31.7	2.16	52.5
Frequency(MHz)	Water	DGBE (%)			Salt (%)		Conductivity σ (S/m)	Permittivity ϵ
5200	78.60	21.40			/		5.30	49.00
5800	78.50	21.40			0.1		6.00	48.20

5. System Verification

5.1 Purpose of System Check

The system performance check verifies that the system operates within its specifications. System and operator errors can be detected and corrected. It is recommended that the system performance check be performed prior to any usage of the system in order to guarantee reproducible results. The system performance check uses normal SAR measurements in a simplified setup with a well characterized source. The setup was selected to give a high sensitivity to all parameters that might fail or vary over time. The system check does not intend to replace the calibration of the components, but indicates situations where the system uncertainty is exceeded due to drift or failure.

5.2 System Check Setup



6. TEST POSITION CONFIGURATIONS

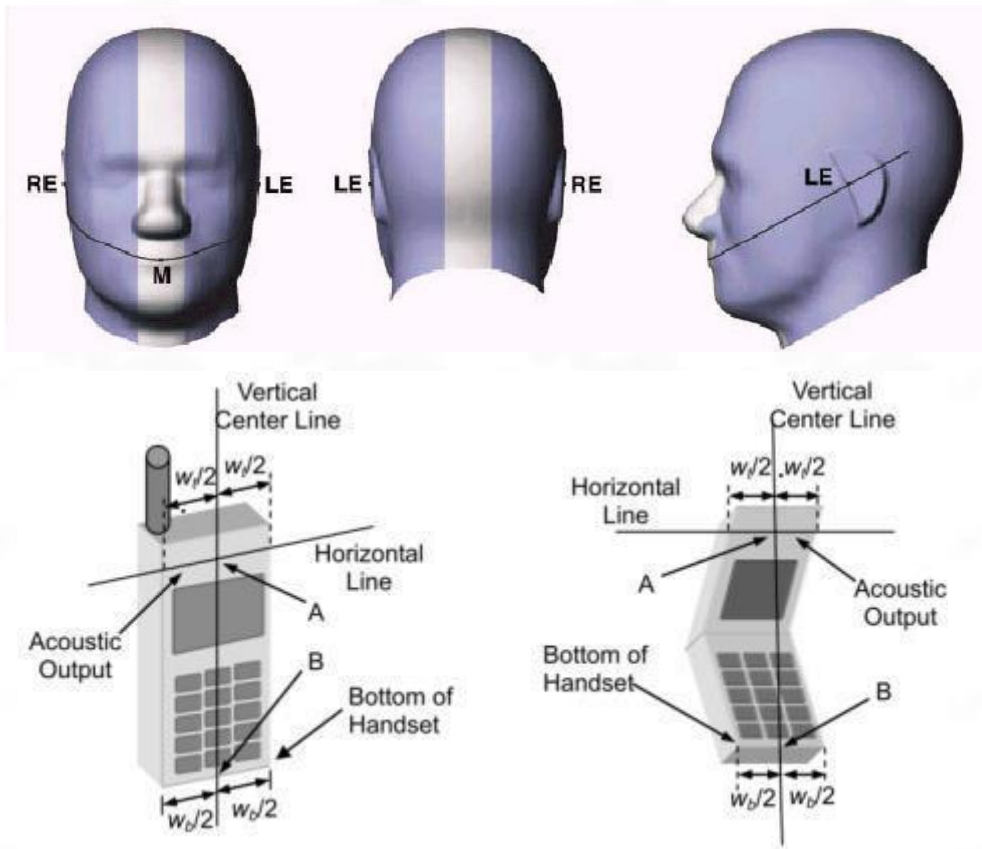
According to KDB 648474 D04 Handset, handsets are tested for SAR compliance in head, body-worn accessory and other use configurations described in the following subsections.

6.1 Head Exposure Conditions

Head exposure is limited to next to the ear voice mode operations. Head SAR compliance is tested according to the test positions defined in IEEE Std 1528-2013 using the SAM phantom illustrated as below.

6.1.1 Two Imaginary Lines on the Handset

- The vertical center line passes through two points on the front side of the handset - the midpoint of the width w_t of the handset at the level of the acoustic output, and the midpoint of the width w_b of the bottom of the handset.
- The horizontal line is perpendicular to the vertical center line and passes through the center of the acoustic output. The horizontal line is also tangential to the face of the handset at point A.
- The two lines intersect at point A. Note that for many handsets, point A coincides with the center of the acoustic output; however, the acoustic output may be located elsewhere on the horizontal line. Also note that the vertical center line is not necessarily parallel to the front face of the handset, especially for clamshell handsets, handsets with flip covers, and other irregularly shaped handsets.



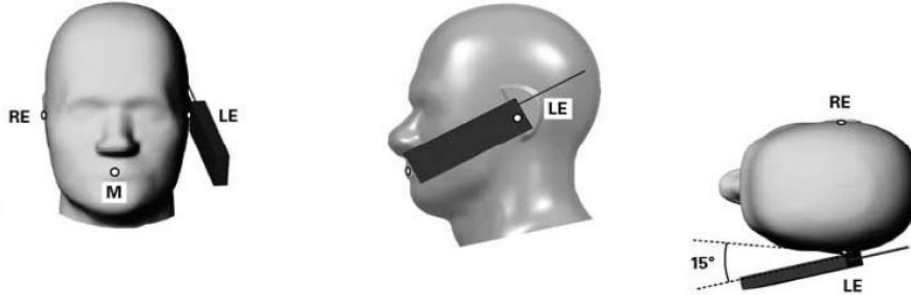
6.1.2 Two Imaginary Lines on the Handset

- (a) To position the device with the vertical center line of the body of the device and the horizontal line crossing the center piece in a plane parallel to the sagittal plane of the phantom. While maintaining the device in this plane, align the vertical center line with the reference plane containing the three ear and mouth reference point (M: Mouth, RE: Right Ear, and LE: Left Ear) and align the center of the ear piece with the line RE-LE.
- (b) To move the device towards the phantom with the ear piece aligned with the line LE-RE until the phone touched the ear. While maintaining the device in the reference plane and maintaining the phone contact with the ear, move the bottom of the phone until any point on the front side is in contact with the cheek of the phantom or until contact with the ear is lost.



6.1.3 Titled Position

- (a) To position the device in the “cheek” position described above.
- (b) While maintaining the device the reference plane described above and pivoting against the ear, moves it outward away from the mouth by an angle of 15 degrees or until contact with the ear is lost.

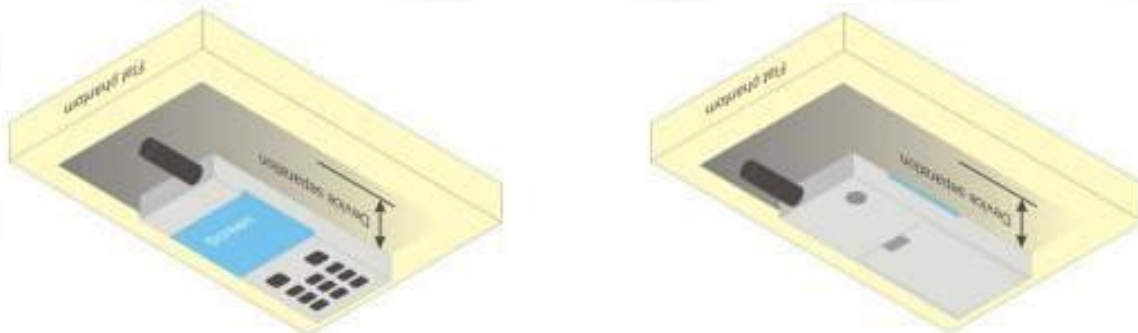


6.2 Body-worn Position Conditions

Body-worn accessory exposure is typically related to voice mode operations when handsets are carried in body-worn accessories. The body-worn accessory procedures in KDB 447498 are used to test for body-worn accessory SAR compliance, without a headset connected to it. This enables the test results for such configuration to be compatible with that required for hotspot mode when the body-worn accessory test separation distance is greater than or equal to that required for hotspot mode. When the reported SAR for a body-worn accessory.

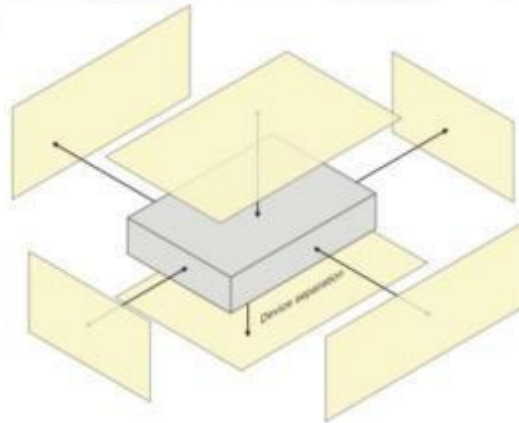
Body-worn accessories that do not contain metallic or conductive components may be tested according to worst-case exposure configurations, typically according to the smallest test separation distance required for the group of body-worn accessories with similar operating and exposure characteristics. All body-worn accessories containing metallic components are tested in conjunction with the host device.

Body-worn accessory SAR compliance is based on a single minimum test separation distance for all wireless and operating modes applicable to each body-worn accessory used by the host, and according to the relevant voice and/or data mode transmissions and operations. If a body-worn accessory supports voice only operations in its normal and expected use conditions, testing of data mode for body-worn compliance is not required. A conservative minimum test separation distance for supporting off-the-shelf body-worn accessories that may be acquired by users of consumer handsets is used to test for body-worn accessory SAR compliance. This distance is determined by the handset manufacturer, according to the requirements of Supplement C 01-01. Devices that are designed to operate on the body of users using lanyards and straps, or without requiring additional body-worn accessories, will be tested using a conservative minimum test separation distance ≤ 5 mm to support compliance.



6.3 Hotspot Mode Exposure Position Conditions

For handsets that support hotspot mode operations, with wireless router capabilities and various web browsing functions, the relevant hand and body exposure conditions are tested according to the hotspot SAR procedures in KDB 941225. A test separation distance of 10 mm is required between the phantom and all surfaces and edges with a transmitting antenna located within 25 mm from that surface or edge. When the form factor of a handset is smaller than 9 cm x 5 cm, a test separation distance of 5 mm (instead of 10 mm) is required for testing hotspot mode. When the separation distance required for body-worn accessory testing is larger than or equal to that tested for hotspot mode, in the same wireless mode and for the same surface of the phone, the hotspot mode SAR data may be used to support body-worn accessory SAR compliance for that particular configuration (surface).



6.4 Product Specific 10g Exposure Consideration

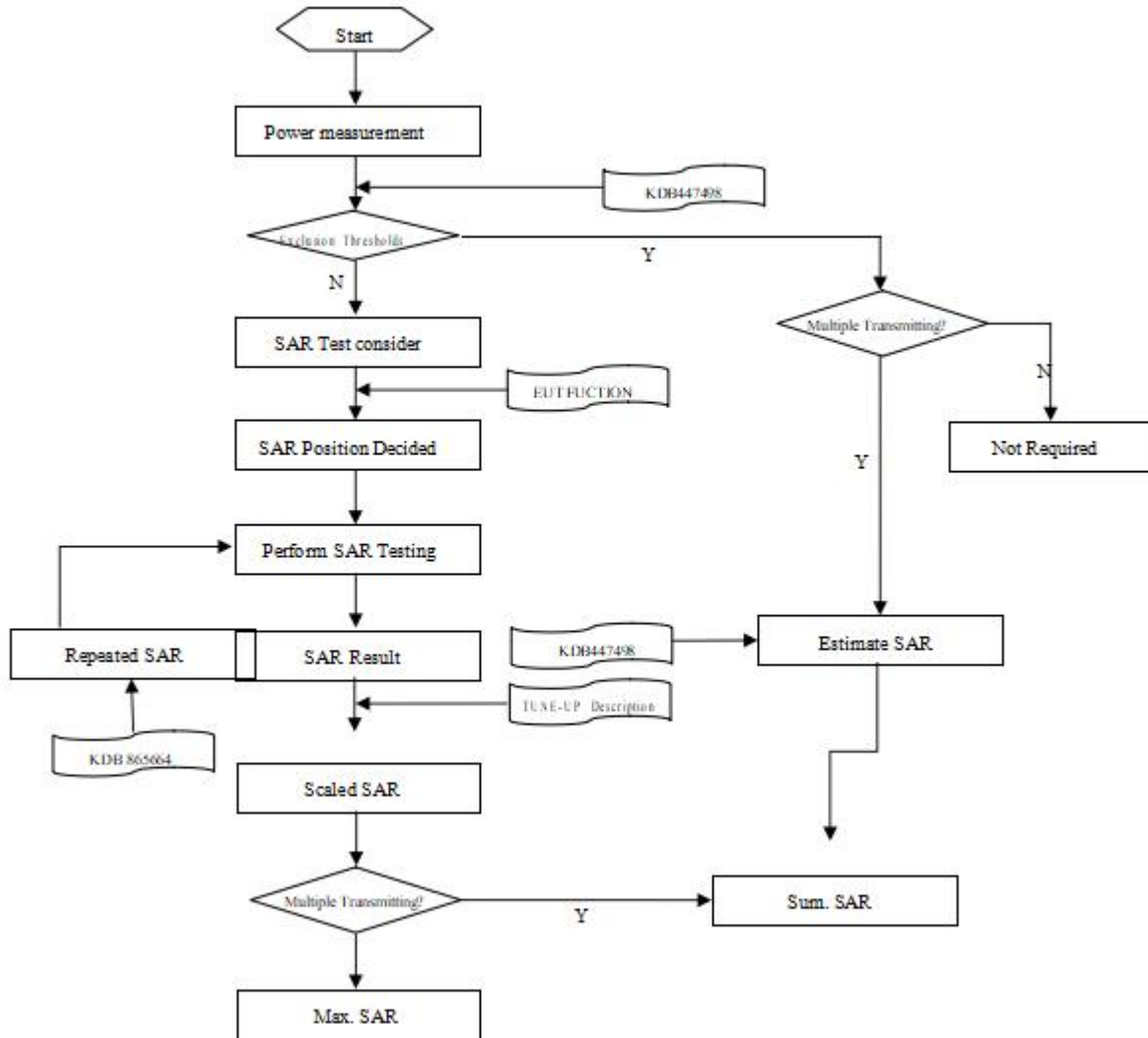
According with FCC KDB 648474 D04, for smart phones with a display diagonal dimension > 15.0 cm or an overall diagonal dimension > 16.0 cm that provide similar mobile web access and multimedia support found in mini-tablets or UMPC mini-tablets that support voice calls next to the ear, unless it is confirmed otherwise through KDB inquiries, the following phablet procedures should be applied to evaluate SAR compliance for each applicable wireless modes and frequency band. Devices marketed as phablets, regardless of form factors and operating characteristics must be tested as a phablet to determine SAR compliance;

The UMPC mini-tablet procedures must also be applied to test the SAR of all surfaces and edges with an antenna located at ≤ 25 mm from that surface or edge, in direct contact with a flat phantom, for 10-g extremity SAR according to the body-equivalent tissue dielectric parameters in KDB 865664 to address interactive hand use exposure conditions. The UMPC mini-tablet 1-g SAR at 5 mm is not required. When hotspot mode applies, 10-g extremity SAR is required only for the surfaces and edges with hotspot mode 1-g reported SAR > 1.2 W/kg.

7. Measurement Procedure

7.1 Measurement Process Diagram

Body SAR



7.2 SAR Scan General Requirement

Probe boundary effect error compensation is required for measurements with the probe tip closer than half a probe tip diameter to the phantom surface. Both the probe tip diameter and sensor offset distance must satisfy measurement protocols; to ensure probe boundary effect errors are minimized and the higher fields closest to the phantom surface can be correctly measured and extrapolated to the phantom surface for computing 1 g SAR. Tolerances of the post-processing algorithms must be verified by the test laboratory for the scan resolutions used in the SAR measurements, according to the reference distribution functions specified in IEC/IEEE 62209-1528: 2020.

Table 3 – Area scan parameters

Parameter	DUT transmit frequency being tested	
	$f \leq 3$ GHz	3 GHz < $f \leq 10$ GHz
Maximum distance between the measured points (geometric centre of the sensors) and the inner phantom surface (z_{M1} in Figure 20 in mm)	5 ± 1	$\delta \ln(2)/2 \pm 0,5^a$
Maximum spacing between adjacent measured points in mm (see O.8.3.1) ^b	20, or half of the corresponding zoom scan length, whichever is smaller	60/f, or half of the corresponding zoom scan length, whichever is smaller
Maximum angle between the probe axis and the phantom surface normal (α in Figure 20) ^c	5° (flat phantom only) 30° (other phantoms)	5° (flat phantom only) 20° (other phantoms)
Tolerance in the probe angle	1°	1°
^a δ is the penetration depth for a plane-wave incident normally on a planar half-space. ^b See Clause O.8 on how Δx and Δy may be selected for individual area scan requirements. ^c The probe angle relative to the phantom surface normal is restricted due to the degradation in the measurement accuracy in fields with steep spatial gradients. The measurement accuracy decreases with increasing probe angle and increasing frequency. This is the reason for the tighter probe angle restriction at frequencies above 3 GHz.		

Table 4 – Zoom scan parameters

Parameter	DUT transmit frequency being tested	
	$f \leq 3$ GHz	3 GHz < $f \leq 10$ GHz
Maximum distance between the closest measured points and the phantom surface (z_{M1} in Figure 20 and Table 3, in mm)	5	$\delta \ln(2)/2^a$
Maximum angle between the probe axis and the phantom surface normal (α in Figure 20)	5° (flat phantom only) 30° (other phantoms)	5° (flat phantom only) 20° (other phantoms)
Maximum spacing between measured points in the x- and y-directions (Δx and Δy , in mm)	8	24/f ^b
For uniform grids: Maximum spacing between measured points in the direction normal to the phantom shell (Δz_1 in Figure 20, in mm)	5	10/(f - 1)
For graded grids: Maximum spacing between the two closest measured points in the direction normal to the phantom shell (Δz_1 in Figure 20, in mm)	4	12/f
For graded grids: Maximum incremental increase in the spacing between measured points in the direction normal to the phantom shell ($R_z = \Delta z_2/\Delta z_1$ in Figure 20)	1,5	1,5
Minimum edge length of the zoom scan volume in the x- and y-directions (L_z in O.8.3.2, in mm)	30	22
Minimum edge length of the zoom scan volume in the direction normal to the phantom shell (L_n in O.8.3.2 in mm)	30	22
Tolerance in the probe angle	1°	1°
^a δ is the penetration depth for a plane-wave incident normally on a planar half-space. ^b This is the maximum spacing allowed, which might not work for all circumstances.		

7.3 Measurement Procedure

The following steps are used for each test position

- a. Establish a call with the maximum output power with a base station simulator. The connection between the mobile and the base station simulator is established via air interface
- b. Measurement of the local E-field value at a fixed location. This value serves as a reference value for calculating a possible power drift.
- c. Measurement of the SAR distribution with a grid of 8 to 16mm * 8 to 16 mm and a constant distance to the inner surface of the phantom. Since the sensors cannot directly measure at the inner phantom surface, the values between the sensors and the inner phantom surface are extrapolated. With these values the area of the maximum SAR is calculated by an interpolation scheme.
- d. Around this point, a cube of 30 * 30 * 30 mm or 32 * 32 * 32 mm is assessed by measuring 5 or 8 * 5 or 8*4 or 5 mm. With these data, the peak spatial-average SAR value can be calculated.

7.4 Area & Zoom Scan Procedure

First Area Scan is used to locate the approximate location(s) of the local peak SAR value(s). The measurement grid within an Area Scan is defined by the grid extent, grid step size and grid offset. Next, in order to determine the EM field distribution in a three-dimensional spatial extension, Zoom Scan is required. The Zoom Scan is performed around the highest E-field value to determine the averaged SAR-distribution over 10 g. Area scan and zoom scan resolution setting follows KDB 865664 D01v01r04 quoted below.

When the 1 g SAR of the highest peak is within 2 dB of the SAR limit, additional zoom scans are required for other peaks within 2 dB of the highest peak that have not been included in any zoom scan to ensure there is no increase in SAR.

8. Conducted RF Output Power

8.1 LTE

Band 38

LTE-TDD Band 38				Maximum Tune-up(dBm)	Conducted Power(dBm)			
Bandwidth	Modulation	RB allocation	RB offset		37775	38000	38225	
					2572.5MHz	2595.0MHz	2617.5MHz	
5MHz	QPSK	1	0	23.50	23.18	23.09	23.27	
			12	23.50	23.25	23.18	23.29	
			24	23.50	23.34	23.22	23.31	
		12	0	23.50	23.33	23.28	23.17	
			6	23.50	23.11	23.13	23.35	
			13	23.50	23.37	23.34	23.14	
	16QAM	25	0	23.50	23.13	23.07	23.17	
			1	0	22.50	22.26	22.23	22.27
			12	22.50	22.34	22.30	22.30	
		12	24	22.50	22.25	22.19	22.44	
			0	22.50	22.41	22.40	22.30	
			6	22.50	21.96	21.97	22.23	
16QAM	25	13	22.50	22.20	22.24	21.97		
		0	22.00	21.81	21.81	21.92		
		25	22.00	21.81	21.81	21.92		
	50	0	22.00	21.81	21.81	21.82		
		24	23.00	22.48	22.51	22.50		
		49	22.50	22.23	22.27	22.31		
16QAM	25	0	22.00	21.95	21.95	21.98		
		12	22.50	22.01	22.00	21.99		
		25	22.50	22.25	22.30	22.25		
	50	25	22.50	22.25	22.30	22.25		
		0	22.50	22.23	22.29	22.22		
		0	22.50	22.23	22.29	22.22		

LTE-TDD Band 38				Maximum Tune-up(dBm)	Conducted Power(dBm)				
Bandwidth	Modulation	RB allocation	RB offset		37825	38000	38175		
					2577.5MHz	2595.0MHz	2612.5MHz		
15MHz	QPSK	1	0	23.50	23.25	23.28	23.20		
			38	23.50	23.19	23.22	23.23		
			74	23.50	23.20	23.24	23.22		
		36	0	23.50	23.11	23.15	23.15		
			19	23.50	23.23	23.16	23.30		
			39	23.50	23.30	23.16	23.22		
		75	0	23.50	23.25	23.12	23.24		
			16QAM	1	0	23.00	22.51	22.58	22.51
					38	22.50	22.26	22.24	22.22
	74	22.50			22.40	22.41	22.37		
	36	0	22.50	22.15	22.17	22.15			
		19	23.00	22.25	22.37	22.53			
		39	23.00	22.53	22.20	22.31			
	75	16QAM	75	0	22.50	22.26	22.24	22.37	

Bandwidth	Modulation	RB allocation	RB offset	Maximum Tune-up(dBm)	37850	38000	38150	
					2580.0MHz	2595.0MHz	2610.0MHz	
20MHz	QPSK	1	0	23.50	23.25	23.23	23.22	
			49	23.50	23.21	23.11	23.16	
			99	23.50	23.14	23.12	23.14	
		50	0	23.50	23.21	23.16	23.27	
			25	23.50	23.31	23.25	23.17	
			50	23.50	23.11	23.16	23.39	
		100	0	23.50	23.23	23.15	23.24	
		16QAM	1	0	22.50	22.36	22.23	22.23
				49	22.50	22.16	22.26	22.32
	99			22.50	22.30	22.17	22.17	
	50		0	22.50	22.43	22.29	22.32	
			25	22.50	22.36	22.29	22.12	
			50	22.50	22.31	22.47	22.41	
	100		0	22.50	22.49	22.25	22.31	

Band 41

LTE-TDD Band 41				Maximum Tune-up(dBm)	Conducted Power(dBm)				
Bandwidth	Modulation	RB allocation	RB offset		39675	40620	41565		
					2498.5MHz	2593.0MHz	2687.5MHz		
5MHz	QPSK	1	0	23.00	22.76	22.78	22.93		
			13	23.50	23.02	23.02	22.77		
			24	23.50	23.23	23.21	22.31		
		12	0	23.50	23.34	23.31	23.29		
			6	23.00	22.96	22.96	22.89		
			13	23.00	22.96	22.93	22.95		
		25	0	23.00	22.70	22.77	22.80		
		16QAM	1	0	22.50	21.79	21.80	22.08	
				13	22.50	22.11	22.14	21.81	
	24			22.50	22.25	22.22	22.28		
	12		0	22.50	22.35	22.31	22.32		
			6	22.50	21.89	21.89	22.08		
			13	22.50	22.15	22.16	21.96		
	25	0	22.50	22.20	22.25	22.11			
	Bandwidth	Modulation	RB allocation	RB offset	Maximum Tune-up(dBm)	39700	40620	41540	
10MHz	QPSK	1	0	23.00	22.70	22.83	22.80		
			25	23.50	23.31	23.35	23.31		
			49	23.50	23.25	23.29	23.32		
		25	0	23.00	22.89	22.93	22.94		
			13	23.00	22.91	22.91	22.94		
			25	23.00	22.81	22.96	22.99		
		50	0	23.00	22.65	22.80	22.75		
		16QAM	1	0	22.00	21.77	21.90	21.81	
				25	23.00	22.54	22.61	22.59	
	49			22.50	22.33	22.37	22.29		
	25		0	22.50	22.16	22.16	22.20		
			13	22.00	21.88	21.87	21.95		
			25	22.50	22.26	22.41	22.14		
	50		0	22.00	21.70	21.84	21.79		
	Bandwidth		Modulation	RB allocation	RB offset	Maximum Tune-up(dBm)	2501.0MHz	2593.0MHz	2685.0MHz

LTE-TDD Band 41				Maximum Tune-up(dBm)	Conducted Power(dBm)			
Bandwidth	Modulation	RB allocation	RB offset		39725	40620	41515	
					2503.5MHz	2593.0MHz	2682.5MHz	
15MHz	QPSK	1	0	23.50	23.25	23.33	23.24	
			38	23.50	23.20	23.25	23.24	
			74	23.00	22.83	22.90	22.88	
		36	0	23.00	22.87	22.90	22.87	
			19	23.00	22.80	22.59	22.79	
			39	23.00	22.79	22.63	22.84	
		75	0	23.50	23.25	23.13	23.28	
		16QAM	1	0	23.00	22.54	22.34	22.41
				38	22.50	22.23	22.29	22.25
	74			22.50	22.08	22.15	22.15	
	36		0	22.00	21.91	21.95	21.90	
			18	22.50	21.82	22.34	22.08	
			39	22.50	22.04	21.66	21.89	
	75	0	22.50	22.18	22.26	22.39		
	Bandwidth	Modulation	RB allocation	RB offset	Maximum Tune-up(dBm)	39750	40620	41490
20MHz	QPSK	1	0	23.50	23.28	23.21	23.21	
			50	23.00	22.88	22.82	22.70	
			99	23.00	22.71	22.75	22.82	
		50	0	23.50	23.03	22.84	22.91	
			25	23.50	23.18	23.11	23.27	
			50	23.50	22.98	23.01	23.18	
		100	0	23.50	23.22	23.19	22.99	
		16QAM	1	0	22.50	22.39	22.01	22.23
				50	22.50	21.87	22.01	21.92
	99			22.00	21.92	21.80	21.86	
	50		0	22.50	22.03	22.12	21.87	
			25	22.50	21.79	22.18	22.26	
			50	22.50	21.79	22.12	22.27	
	100	0	22.50	21.88	22.17	21.93		
	Bandwidth	Modulation	RB allocation	RB offset	Maximum Tune-up(dBm)	2506.0MHz	2593.0MHz	2680.0MHz

8.2 Bluetooth

Mode	Maximum Tune-up(dBm)	Average Conducted Output Power (dBm)			
		0	39	78	
		2402MHz	2441MHz	2480MHz	
EDR	GFSK	2.00	1.97	1.52	1.77
	π/4QPSK	-0.50	-0.78	-1.02	-0.59
	8DPSK	0.00	-0.14	-0.37	-0.07
Mode	Maximum Tune-up(dBm)	Average Conducted Output Power (dBm)			
		0	20	39	
		2402MHz	2440MHz	2480MHz	
BLE	1Mbps	2.50	2.38	1.63	1.89

Channel	Frequency (GHz)	Max. Tune-up Power (dBm)	Max. Power (mW)	Test distance (mm)	Exclusion thresholds for 1-g SAR(mW)	RF exposure evaluation required
0	2.402	2.50	1.78	0	2.79	No
0	2.402	2.50	1.78	10	10.39	No

Note

- Per KDB 447498 D04 Interim General RF Exposure Guidance v01, the 1-g SAR test exclusion thresholds for 300 MHz to 6 GHz at *test separation distances* ≤ 40 cm are determined by:

$$P_{th} \text{ (mW)} = \begin{cases} ERP_{20 \text{ cm}}(d/20 \text{ cm})^x & d \leq 20 \text{ cm} \\ ERP_{20 \text{ cm}} & 20 \text{ cm} < d \leq 40 \text{ cm} \end{cases} \quad \text{(B. 2)}$$

where

$$P_{th} \text{ (mW)} = ERP_{20 \text{ cm}} \text{ (mW)} = \begin{cases} 2040f & 0.3 \text{ GHz} \leq f < 1.5 \text{ GHz} \\ 3060 & 1.5 \text{ GHz} \leq f \leq 6 \text{ GHz} \end{cases} \quad \text{(B. 1)}$$

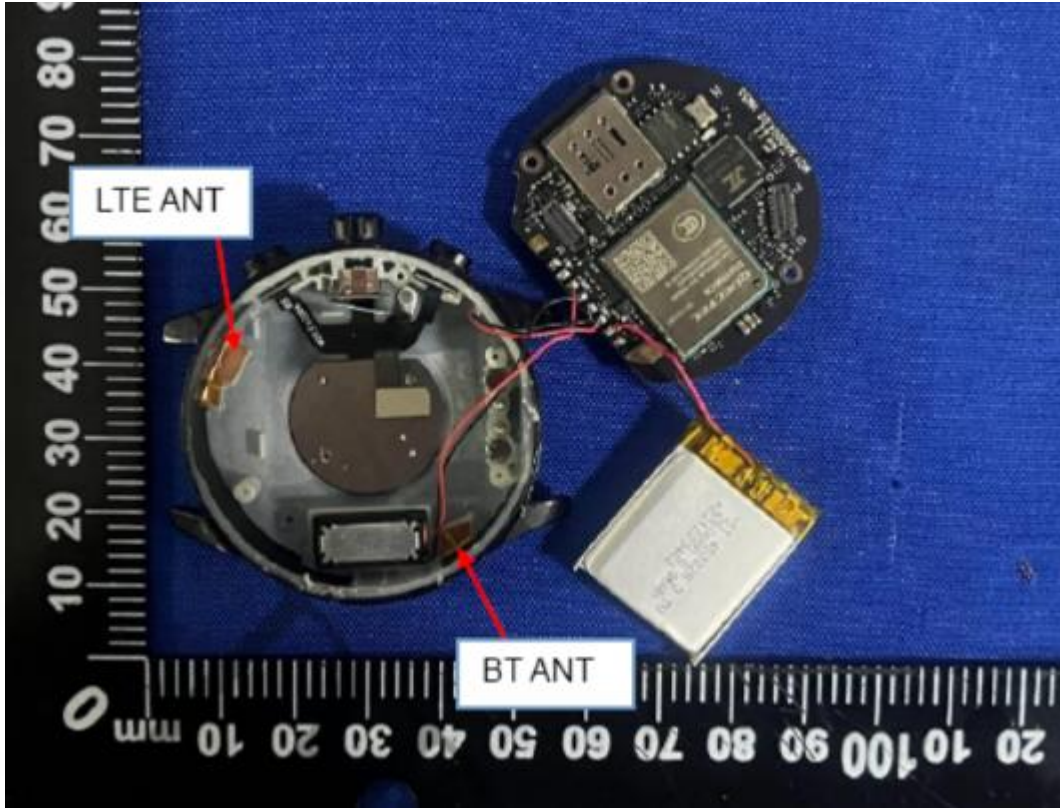
$$x = -\log_{10} \left(\frac{60}{ERP_{20 \text{ cm}} \sqrt{f}} \right)$$

and *f* is in GHz, *d* is the separation distance (cm), and *ERP*_{20cm} is per Formula (B.1).

- *When the minimum test separation distance is < 5 mm, a distance of 5 mm is applied to determine estimated SAR.
- Per KDB 248227 D01 v02r02, choose the highest output power channel to test SAR and determine further SAR exclusion.
 - The output power of all data rate were prescan, just the worst case (the lowest data rate) of all mode were shown in report.

9. Test Exclusion Consideration

Antenna information:



LTE Antenna	LTE TX/RX
WLAN/BT Antenna	WLAN/BT TX/RX
Note: 1. KDB 447498 D04v01, Transmitters that are built-in within a wrist watch or similar wrist-worn devices typically operate in speaker mode for voice communication, with the device worn on the wrist and positioned next to the mouth. Next to the mouth exposure requires 1-g SAR and the wrist-worn condition requires 10-g extremity SAR.	

9.1 SAR Test Exclusion Consideration Table

Per KDB 447498 requires when the standalone SAR test exclusion of section 4.3.1 is applied to an antenna that transmits simultaneously with other antennas, the standalone SAR must be estimated according to the following format to determine simultaneous transmission SAR test exclusion:

$$(\text{max.power of channel, including tune-up tolerance, mW}) / (\text{min. test separation distance, mm}) \cdot [\sqrt{f(\text{GHz})} / x]$$

W/kg for test separation distances ≤ 50 mm;

where $x = 7.5$ for 1-g SAR, and $x = 18.75$ for 10-g SAR.

0.4 W/Kg for 1-g SAR and 1.0 W/kg for 10-g SAR, when the test separation distances is > 50 mm

Mode	Position	Channel	Frequency (GHz)	Max. Tune-up Power (dBm)	Max. Power (mW)	Test distance (mm)	Estimated SAR (W/kg)	Limit
Bluetooth	Body	0	2.402	2.50	1.78	10	0.029	(1.6 W/kg)
Bluetooth	Body	0	2.402	2.50	1.78	0	0.037	(2.0 W/kg)

10. Test Result

LTE

Next-to-mouth(10mm gap)													
Mode	Channel Type	Position	Ch.	Freq. (MHz)	Power Drift (%)	1g Meas. SAR (W/kg)	Duty cycle (%)	Duty cycle Factor	Meas. Power (dBm)	Max. tune-up power (dBm)	Scaling Factor	1g Reported SAR (W/kg)	Meas. No.
Band 38 (BW: 20MHz)	1RB	Front	37850	2580.0	1.450	0.048	100.00	1.000	23.25	23.50	1.059	0.051	1#
	50%RB	Front	37850	2580.0	1.078	0.043	100.00	1.000	23.31	23.50	1.045	0.045	/
Wrist-worn(0mm Gap)													
Mode	Channel Type	Position	Ch.	Freq. (MHz)	Power Drift (%)	10g Meas. SAR (W/kg)	Duty cycle (%)	Duty cycle Factor	Meas. Power (dBm)	Max. tune-up power (dBm)	Scaling Factor	10g Reported SAR (W/kg)	Meas. No.
Band 38 (BW: 20MHz)	1RB	Back	37850	2580.0	-1.500	0.341	100.00	1.000	23.25	23.50	1.059	0.361	2#
	50%RB	Back	37850	2580.0	2.840	0.325	100.00	1.000	23.31	23.50	1.045	0.340	/

Next-to-mouth(10mm gap)													
Mode	Channel Type	Position	Ch.	Freq. (MHz)	Power Drift (%)	1g Meas. SAR (W/kg)	Duty cycle (%)	Duty cycle Factor	Meas. Power (dBm)	Max. tune-up power (dBm)	Scaling Factor	1g Reported SAR (W/kg)	Meas. No.
Band 41 (BW: 20MHz)	1RB	Front	39750	2506.0	-1.470	0.023	100.00	1.000	23.28	23.50	1.052	0.024	3#
	50%RB	Front	39750	2506.0	1.994	0.020	100.00	1.000	23.18	23.50	1.076	0.022	/
Wrist-worn(0mm Gap)													
Mode	Channel Type	Position	Ch.	Freq. (MHz)	Power Drift (%)	10g Meas. SAR (W/kg)	Duty cycle (%)	Duty cycle Factor	Meas. Power (dBm)	Max. tune-up power (dBm)	Scaling Factor	10g Reported SAR (W/kg)	Meas. No.
Band 41 (BW: 20MHz)	1RB	Back	39750	2506.0	-2.300	0.423	100.00	1.000	23.28	23.50	1.052	0.445	4#
	50%RB	Back	39750	2506.0	2.957	0.405	100.00	1.000	23.18	23.50	1.076	0.436	/

Note:

- The maximum SAR Value of each test band is marked bold.
- SAR plot is provided only for the highest measured SAR in each exposure configuration, wireless mode and frequency band combination.
- Per KDB 447498 D04 v01, for each exposure position, if the highest output power channel Reported SAR $\leq 0.8W/kg$, other channels SAR testing is not necessary.
- Per KDB 447498 D04 v01, next-to-mouth/wrist-worn use is evaluated with the device positioned at 10/0mm from a flat phantom respectively filled with head tissue-equivalent medium.
- Per KDB 447498 D04 v01, the report SAR is measured SAR value adjusted for maximum tune-up tolerance. Scaling Factor= $10^{(tune-up\ limit\ power(dBm) - Ave.power\ power(dBm))/10}$, where tune-up limit is the maximum rated power among all production units.
Reported SAR(W/kg)=Measured SAR (W/kg)*Scaling Factor.

11. SAR Measurement Variability

According to KDB 865664 D01, SAR measurement variability was assessed for each frequency band, which is determined by the SAR probe calibration point and tissue-equivalent medium used for the device measurements. When both head and body tissue-equivalent media are required for SAR measurements in a frequency band, the variability measurement procedures should be applied to the tissue medium with the highest measured SAR, using the highest measured SAR configuration for that tissue-equivalent medium. Alternatively, if the highest measured SAR for both head and body tissue-equivalent media are ≤ 1.45 W/kg and the ratio of these highest SAR values, i.e., largest divided by smallest value, is ≤ 1.10 , the highest SAR configuration for either head or body tissue-equivalent medium may be used to perform the repeated measurement. These additional measurements are repeated after the completion of all measurements requiring the same head or body tissue-equivalent medium in a frequency band. The test device should be returned to ambient conditions (normal room temperature) with the battery fully charged before it is re-mounted on the device holder for the repeated measurement(s) to minimize any unexpected variations in the repeated results. 10g factor

SAR repeated measurement procedure:

1. When the highest measured SAR is < 0.80 W/kg, repeated measurement is not required.
2. When the highest measured SAR is ≥ 0.80 W/kg, repeat that measurement once.
3. If the ratio of largest to smallest SAR for the original and first repeated measurements is > 1.20 , or when the original or repeated measurement is ≥ 1.45 W/kg, perform a second repeated measurement.
4. If the ratio of largest to smallest SAR for the original, first and second repeated measurements is > 1.20 , and the original, first or second repeated measurement is ≥ 1.5 W/kg, perform a third repeated measurement.

For 10g SAR, the 10-g Extremity SAR are 2.5 times higher than the 1-g SAR assessment indicated above.

As the above result shows, the highest measured 1g SAR is $0.048 < 0.8$ W/kg and 10g SAR is $0.423 < 2.0$ W/kg, so repeated measurement is not required.

12. Simultaneous Transmission

Simultaneous transmission SAR test exclusion is determined for each operating configuration and exposure condition according to the reported standalone SAR of each applicable simultaneous transmitting antenna. When the sum of SAR 1g of all simultaneously transmitting antennas in an operating mode and exposure condition combination is within the SAR limit (SAR 1g 1.6 W/kg/SAR 10g 4.0 W/kg), the simultaneous transmission SAR is not required. When the sum of SAR 1g is greater than the SAR limit (SAR 1g 1.6 W/kg/SAR 10g 4.0 W/kg), SAR test exclusion is determined by the SAR to Peak Location Ratio (SPLSR)

12.1 Simultaneous Transmission Mode Considerations

Simultaneous transmission SAR test exclusion is determined for each operating configuration and exposure condition according to the reported standalone SAR of each applicable simultaneous transmitting antenna. The device has 2 Tx antennas, WWAN main antenna and Wi-Fi/BT Ant. supporting 2.4G Wi-Fi & BT. Among that, 2x antennas can always transmit simultaneously. The work mode combination is showed as below table.

Simultaneous Transmission information:

NO.	Configuration	Next-to-mouth	Wrist-worn
1	WWAN+BT	Yes	Yes

12.2 Sum SAR of Simultaneous Transmission

Next-to-mouth

Band	Test Position	RB allocation	Reported SAR(W/kg)		Σ SAR (W/kg) WWAN + BT	SPLSR	Remark
			WWAN	BT			
LTE Band 38 QPSK (20MHz)	Front	1RB	0.051	0.029	0.080	N/A	N/A
	Front	50%RB	0.045	0.029	0.074	N/A	N/A

Wrist-worn

Band	Test Position	RB allocation	Reported SAR(W/kg)		Σ SAR (W/kg) WWAN + BT	SPLSR	Remark
			WWAN	BT			
LTE Band 41 QPSK (20MHz)	Back	1RB	0.445	0.037	0.482	N/A	N/A
	Back	50%RB	0.436	0.037	0.473	N/A	N/A

13. Test Equipment List

Description	Manufacturer	Model	Serial No./Version	Cal. Date	Cal. Due
E-Field Probe	MVG	SSE2	04/22 EPG0365	2024/02/06	2025/02/05
6 1/2 Digital Multimeter	Keithley	DMM6500	4527164	2023/11/16	2024/11/15
Wideband Radio Communication Tester	ROHDE & SCHWARZ	CMW500	161997	2023/11/16	2024/11/15
MXG Vector Signal Generator	Agilent	N5182A	MY46240163	2023/11/16	2024/11/15
E-Series Avg. Power Sensor	KEYSIGHT	E9300A	MY55050017	2024/03/20	2025/03/19
EPM Series Power Meter	KEYSIGHT	E4418B	MY41293435	2024/03/20	2025/03/19
10dB Attenuator	MIDWEST MICROWAVE	263-10dB	/	2024/03/20	2025/03/19
Coupler	MERRIMAC	CWM-10R-10.8G	LOT-83391	2024/03/20	2025/03/19
2600MHz Validation Dipole	MVG	SID2600	07/22 DIP 2G600-663	2023/02/06	2025/02/05
LIMESAR Dielectric Probe	MVG	SCLMP	06/22 OCPG88	/	/
ENA Series Network Analyzer	Agilent	E5071B	MY42301221	2023/11/16	2024/11/15
Thermometer	Riters	DT-232	21A11	2024/03/20	2025/03/19
Antenna network emulator	MVG	ANTA 74	07/22 ANTA 74	/	/
SAM Phantom	MVG	SAM	07/22 SAM149	/	/
Mobile Phone Positioning System	MVG	MSH 118	07/22 MSH 118	/	/
Mechanical Calibration Kit	PNA	/	/	/	/
Open SAR test software	MVG	/	V5.3.5	/	/

Note: For dipole antennas, BTF has adopted 3 years as calibration intervals, and on annual basis, every measurement dipole has been evaluated and is in compliance with the following criteria:

1. There is no physical damage on the dipole;
2. System validation with specific dipole is within 10% of calibrated value;
3. Return-loss in within 20% of calibrated measurement.
4. Impedance (real or imaginary parts) in within 5 Ohms of calibrated measurement.

ANNEX A Simulating Liquid Verification Result

The dielectric parameters of the liquids were verified prior to the SAR evaluation using an SCLMP Dielectric Probe Kit.

Dielectric performance of tissue simulating liquid									
Frequency (MHz)	ϵ_r		σ (s/m)		Delta (ϵ_r)	Delta (σ)	Limit	Temp (°C)	Date
	Target	Measured	Target	Measured					
2600	39.00	38.88	1.96	1.97	-0.31%	0.51%	±5%	20.0	10/4/2024
NOTE: The dielectric parameters of the tissue-equivalent liquid should be measured under similar ambient conditions and within 2 °C of the conditions expected during the SAR evaluation to satisfy protocol requirements.									

ANNEX B System Check Result

Comparing to the original SAR value provided by MVG, the validation data should be within its specification of 10 %(for 10 g).

Frequency (MHz)	Input Power (mW)	1g SAR (W/Kg)	10g SAR (W/Kg)	1g SAR 1W input power normalized (W/Kg)	10g SAR 1W input power normalized (W/Kg)	1g SAR Standard target (1W) (W/Kg)	10g SAR Standard target (1W) (W/Kg)	1g SAR Deviation	10g SAR Deviation
2600	16	0.421	0.866	26.56	54.64	24.60	55.30	-0.08%	0.01%

System Performance Check Data (2600 MHz)

System check at 2600 MHz

Date of measurement: 10/4/2024

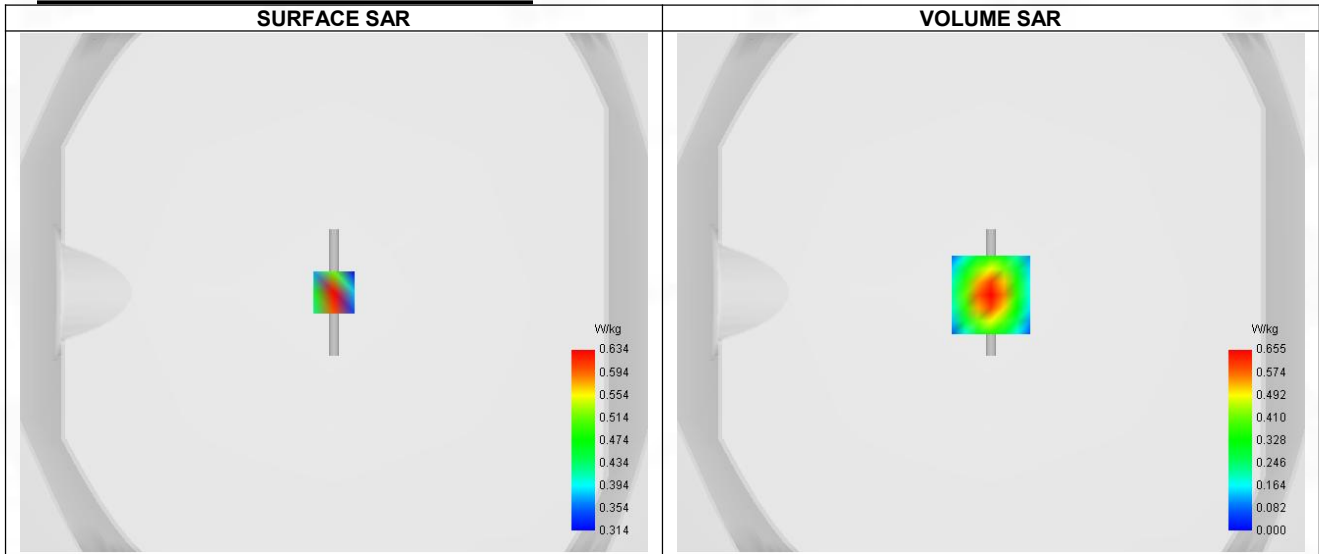
A. Experimental conditions.

Probe	SN 04/22 EPG0365
ConvF	2.40
Area Scan	dx=8mm dy=8mm, Adaptive 1 max
Zoom Scan	5x5x7, dx=8mm dy=8mm dz=5mm, Complete
Phantom	Validation plane
Device Position	Dipole
Band	CW2600
Channels	Middle
Signal	CW

B. Permittivity

Frequency (MHz)	2600.000
Relative permittivity (real part)	38.880
Relative permittivity (imaginary part)	12.690
Conductivity (S/m)	1.970

C. SAR Surface and Volume



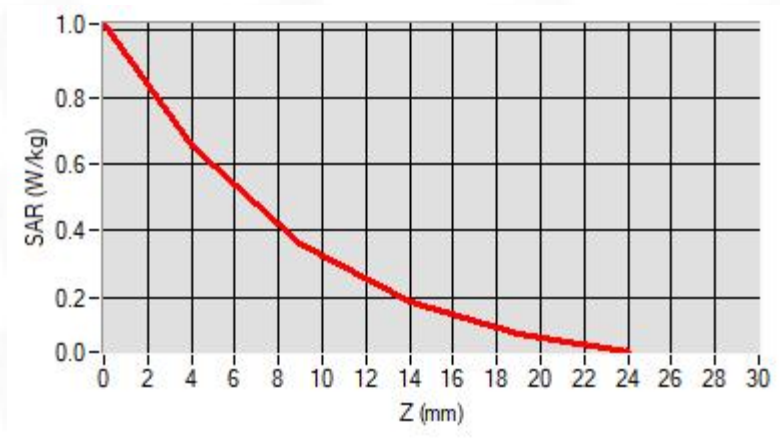
Maximum location: X=0.00, Y=-1.00 ; SAR Peak: 1.02 W/kg

D. SAR 1g & 10g

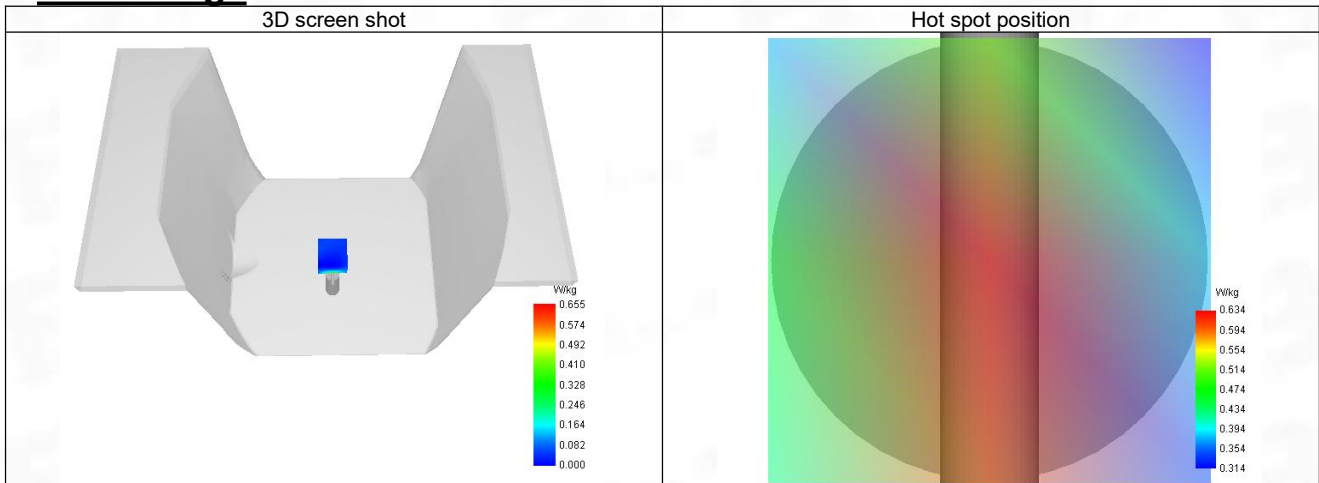
SAR 10g (W/Kg)	0.421
SAR 1g (W/Kg)	0.866
Variation (%)	2.980
Horizontal validation criteria: minimum distance (mm)	0.000000
Vertical validation criteria: SAR ratio M2/M1 (%)	0.000000

E. Z Axis Scan

Z (mm)	0.00	4.00	9.00	14.00	19.00
SAR (W/Kg)	1.020	0.655	0.359	0.187	0.091



F. 3D Image



ANNEX C Test Data

1-Next-to-mouth: front position in dist. 10mm Channel 37850 in LTE Band 38

SAR Measurement at LTE band 38 (Body, Validation Plane)

Date of measurement: 10/4/2024

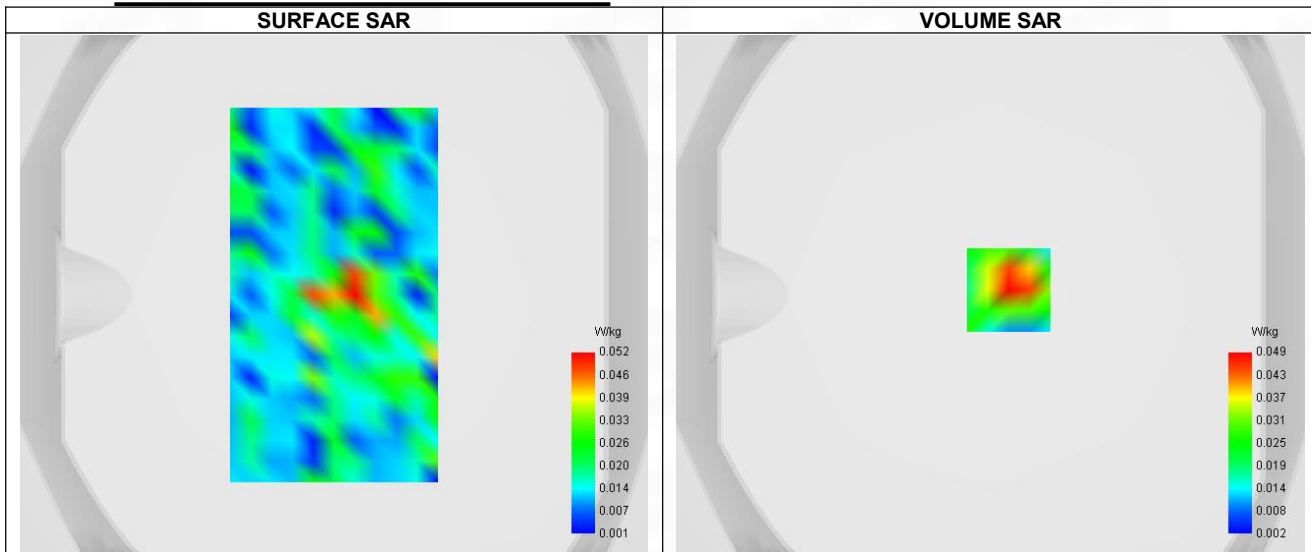
A. Experimental conditions.

Probe	SN 04/22 EPGO365
ConvF	2.40
Area Scan	dx=8mm dy=8mm, Adaptive 1 max
Zoom Scan	5x5x7,dx=8mm dy=8mm dz=5mm,Complete
Phantom	Validation plane
Device Position	Body
Band	LTE band 38
Channels	Lower (37850)
Signal	LTE TDD
Cell Bandwidth	20 Mhz
Modulation	SC-OFDM - QPSK
RB offset	0
RB size	1
Subframe configuration	0
Special subframe configuration	0
Cyclic prefix	Normal
Duty Cycle (%)	0.61

B. Permittivity

Frequency (MHz)	2571.090
Relative permittivity (real part)	38.919
Relative permittivity (imaginary part)	12.815
Conductivity (S/m)	1.939

C. SAR Surface and Volume



Maximum location: X=7.00, Y=2.00 ; SAR Peak: 0.09 W/kg

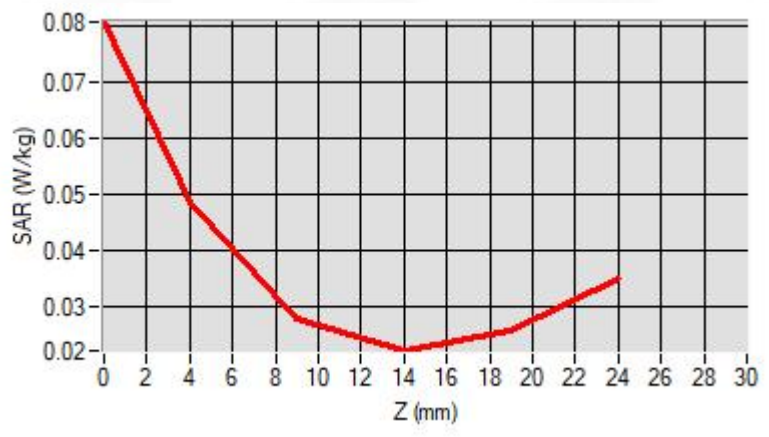
D. SAR 1g & 10g

SAR 10g (W/Kg)	0.032
SAR 1g (W/Kg)	0.048

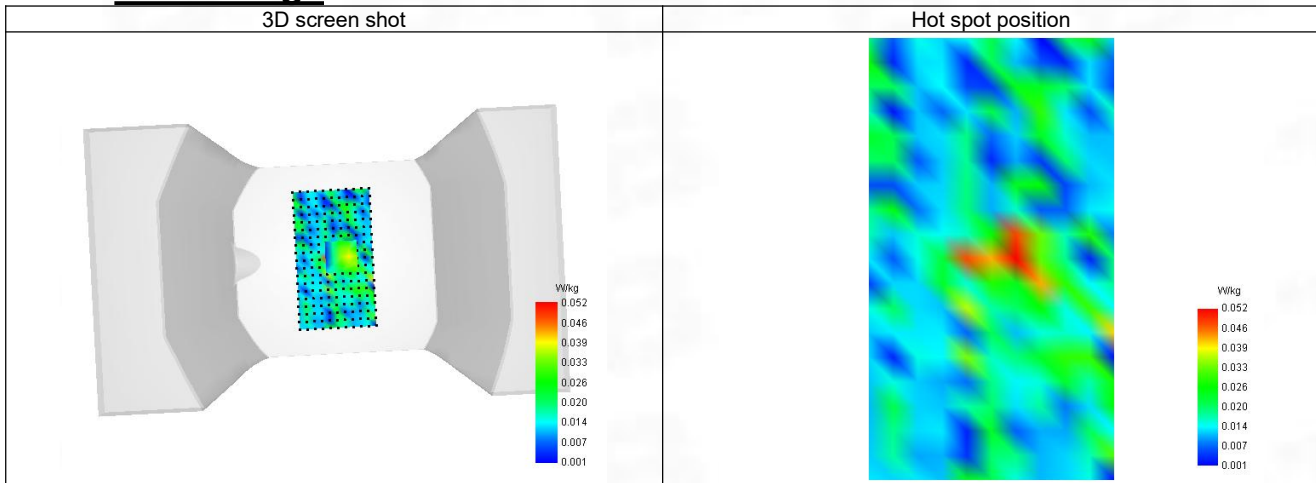
Variation (%)	1.450
---------------	-------

E. Z Axis Scan

Z (mm)	0.00	4.00	9.00	14.00	19.00
SAR (W/Kg)	0.081	0.049	0.028	0.022	0.026



F. 3D Image



2-wrist-worn: back position in dist. 0mm Channel 37850 in LTE Band 38

SAR Measurement at LTE band 38 (Body, Validation Plane)

Date of measurement: 10/4/2024

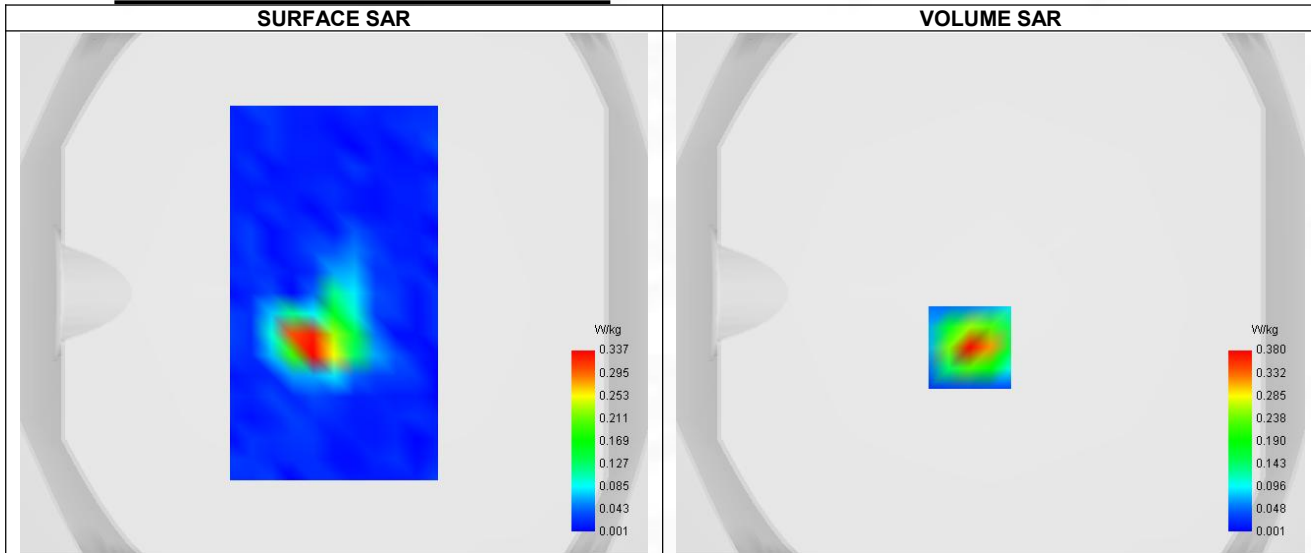
A. Experimental conditions.

Probe	SN 04/22 EPG0365
ConvF	2.40
Area Scan	dx=8mm dy=8mm, Adaptative 1 max
Zoom Scan	5x5x7,dx=8mm dy=8mm dz=5mm,Complete
Phantom	Validation plane
Device Position	Body
Band	LTE band 38
Channels	Lower (37850)
Signal	LTE TDD
Cell Bandwidth	20 Mhz
Modulation	SC-OFDM - QPSK
RB offset	0
RB size	1
Subframe configuration	0
Special subframe configuration	0
Cyclic prefix	Normal
Duty Cycle (%)	0.61

B. Permittivity

Frequency (MHz)	2571.090
Relative permittivity (real part)	38.919
Relative permittivity (imaginary part)	12.815
Conductivity (S/m)	1.939

C. SAR Surface and Volume



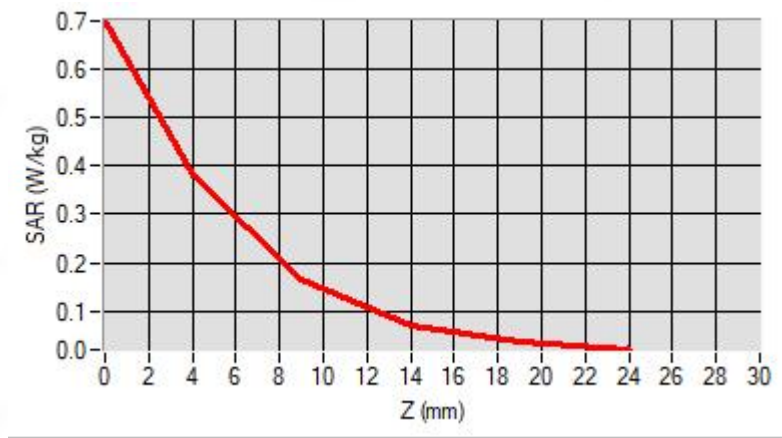
Maximum location: X=-8.00, Y=-21.00 ; SAR Peak: 0.71 W/kg

D. SAR 1g & 10g

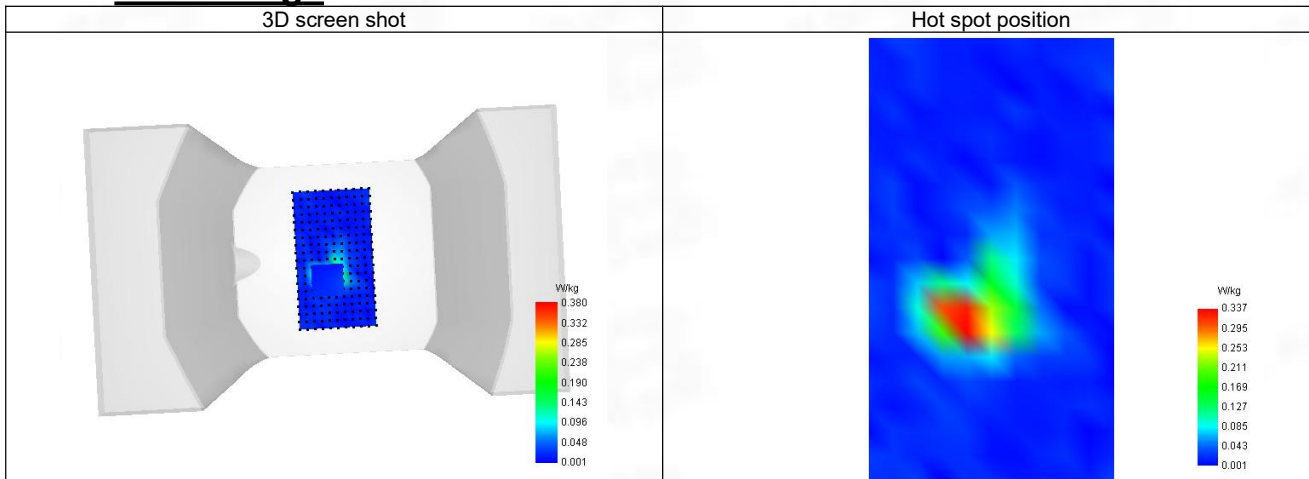
SAR 10g (W/Kg)	0.144
SAR 1g (W/Kg)	0.341
Variation (%)	-1.500

E. Z Axis Scan

Z (mm)	0.00	4.00	9.00	14.00	19.00
SAR (W/Kg)	0.698	0.380	0.165	0.071	0.036



F. 3D Image



3-Next-to-mouth: front position in dist. 10mm Channel 39750 in LTE Band 41

SAR Measurement at LTE band 41 (Body, Validation Plane)

Date of measurement: 10/4/2024

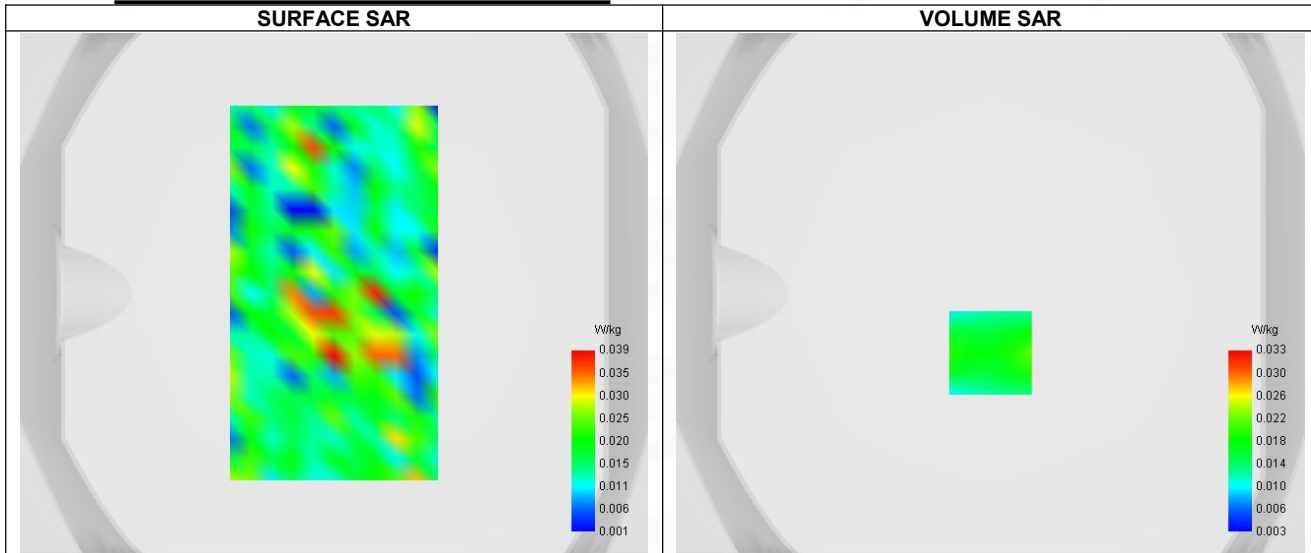
A. Experimental conditions.

Probe	SN 04/22 EPG0365
ConvF	2.36
Area Scan	dx=8mm dy=8mm, Adaptative 1 max
Zoom Scan	5x5x7,dx=8mm dy=8mm dz=5mm,Complete
Phantom	Validation plane
Device Position	Body
Band	LTE band 41
Channels	Lower (39750)
Signal	LTE TDD
Cell Bandwidth	20 Mhz
Modulation	SC-OFDM - QPSK
RB offset	0
RB size	1
Subframe configuration	0
Special subframe configuration	0
Cyclic prefix	Normal
Duty Cycle (%)	0.61

B. Permittivity

Frequency (MHz)	2497.090
Relative permittivity (real part)	39.017
Relative permittivity (imaginary part)	13.136
Conductivity (S/m)	1.860

C. SAR Surface and Volume



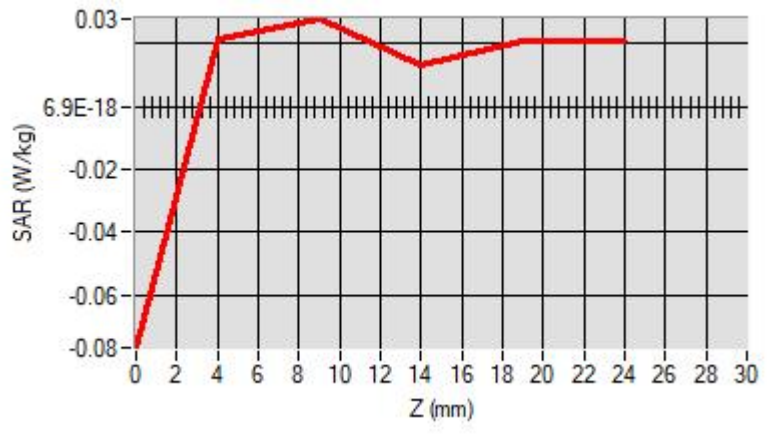
Maximum location: X=0.00, Y=-23.00 ; SAR Peak: 0.03 W/kg

D. SAR 1g & 10g

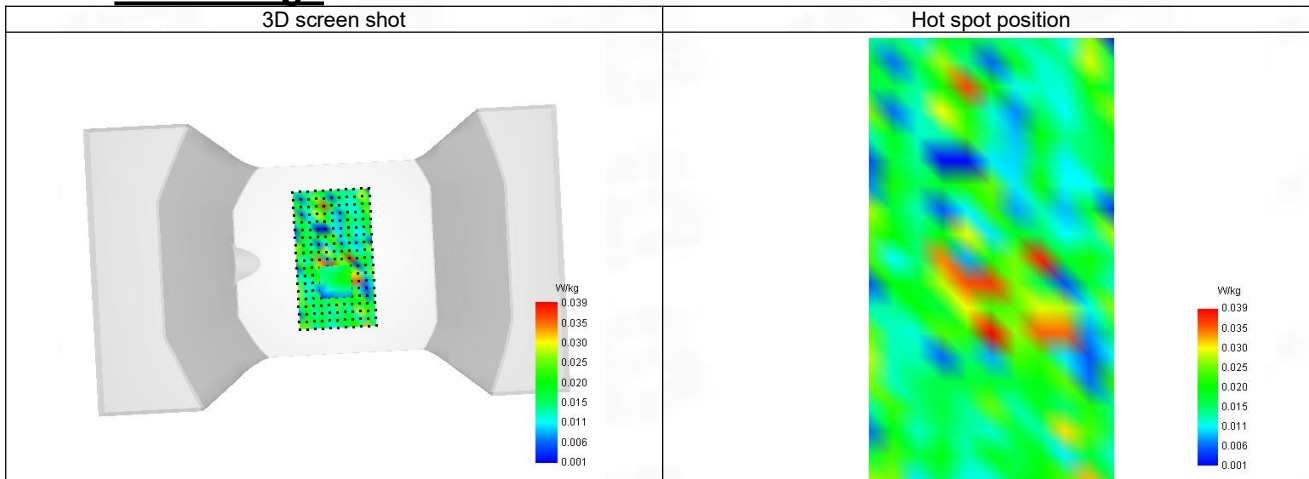
SAR 10g (W/Kg)	0.023
SAR 1g (W/Kg)	0.023
Variation (%)	-1.470

E. Z Axis Scan

Z (mm)	0.00	4.00	9.00	14.00	19.00
SAR (W/Kg)	-0.077	0.021	0.028	0.013	0.021



F. 3D Image



4-wrist-worn: back position in dist. 0mm Channel 39750 in LTE Band 41

SAR Measurement at LTE band 41 (Body, Validation Plane)

Date of measurement: 10/4/2024

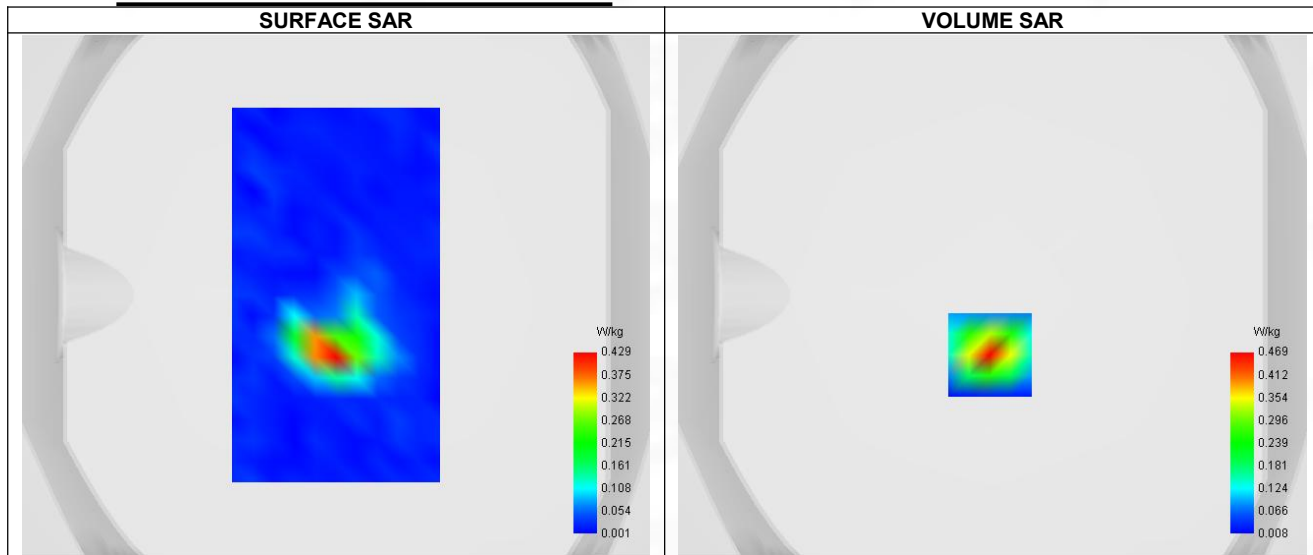
A. Experimental conditions.

Probe	SN 04/22 EPG0365
ConvF	2.36
Area Scan	dx=8mm dy=8mm, Adaptative 1 max
Zoom Scan	5x5x7,dx=8mm dy=8mm dz=5mm,Complete
Phantom	Validation plane
Device Position	Body
Band	LTE band 41
Channels	Lower (39750)
Signal	LTE TDD
Cell Bandwidth	20 Mhz
Modulation	SC-OFDM - QPSK
RB offset	0
RB size	1
Subframe configuration	0
Special subframe configuration	0
Cyclic prefix	Normal
Duty Cycle (%)	0.61

B. Permittivity

Frequency (MHz)	2497.090
Relative permittivity (real part)	39.017
Relative permittivity (imaginary part)	13.136
Conductivity (S/m)	1.860

C. SAR Surface and Volume



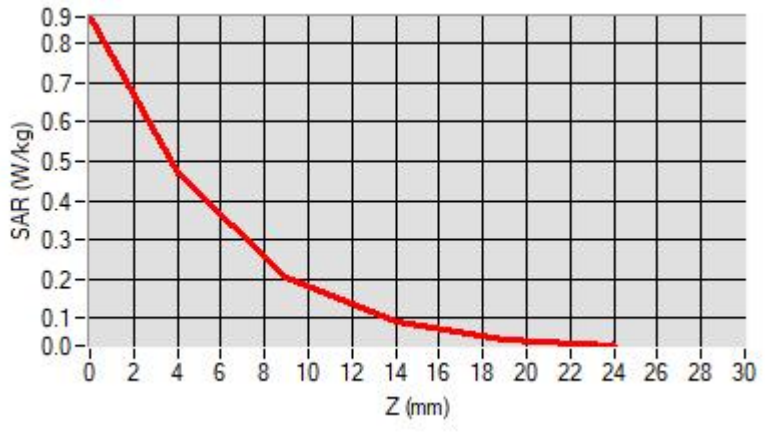
Maximum location: X=-1.00, Y=-23.00 ; SAR Peak: 0.88 W/kg

D. SAR 1g & 10g

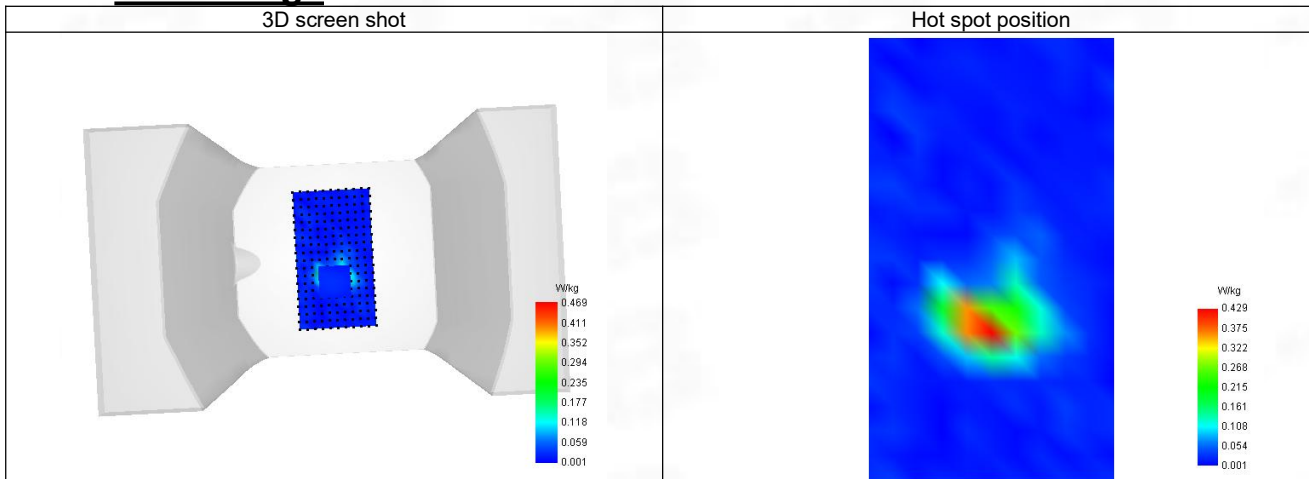
SAR 10g (W/Kg)	0.177
SAR 1g (W/Kg)	0.423
Variation (%)	-2.300

E. Z Axis Scan

Z (mm)	0.00	4.00	9.00	14.00	19.00
SAR (W/Kg)	0.867	0.469	0.203	0.090	0.048

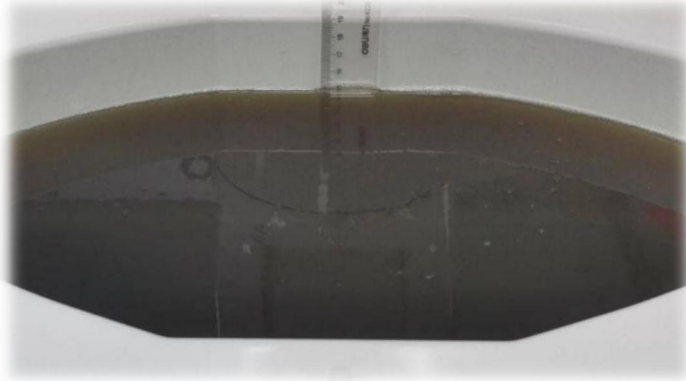


F. 3D Image



ANNEX D SAR Test Setup Photos

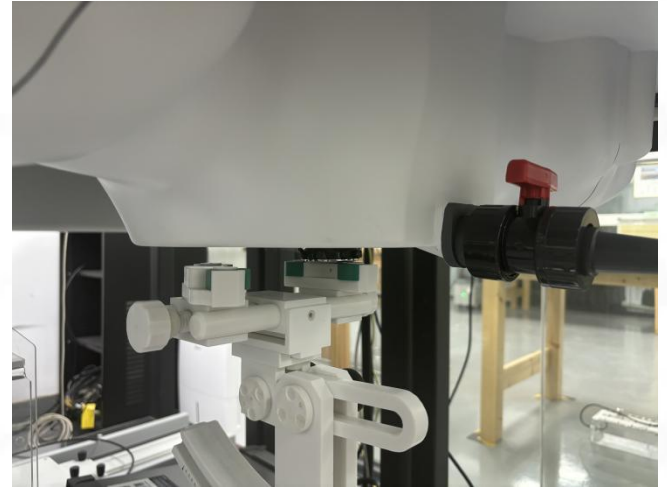
Reference Photo: simulation liquid depth 15cm



Reference Photos



Next-to-mouth Front (dist. 10mm)



Wrist-worn Back (dist. 0mm)

ANNEX E EUT External and Internal Photos

Please refer to RF Report.

ANNEX F Calibration Information

Please refer to the document "Calibration.pdf".



BTF Testing Lab (Shenzhen) Co., Ltd.

F101, 201 and 301, Building 1, Block 2, Tantou Industrial Park, Tantou Community, Songgang Street,
Bao'an District, Shenzhen, China

www.btf-lab.com

--END OF REPORT--