





# 1. Graphic for reference

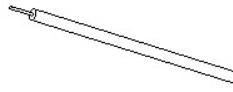


Figure 2 0.8\*20mmBT

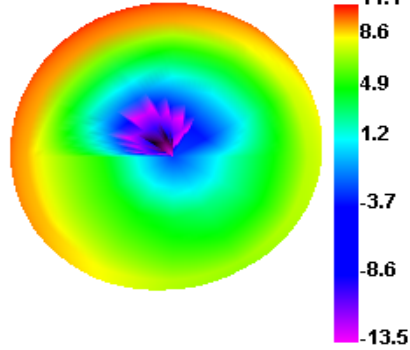
Name	ANTENNA
Model	LT13
Frequency	2.4Ghz
Input impedance	50Ω
Allowed power	5mW
Working temp.	-25 ~ +65 °C
Storage temp.	-40 ~ +85 °C
Weight	0.25g
Antenna gain天线增益	-1dBi

# 2.OTA(Free Space)

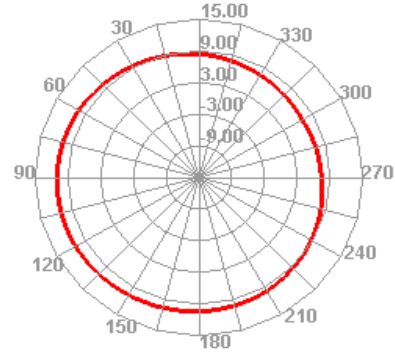
Channel	TRP (dBm)	TIS (dBm)
0	6.3	-91.1
39	6.5	-91.3
78	6.6	-91.2

### 3.Field

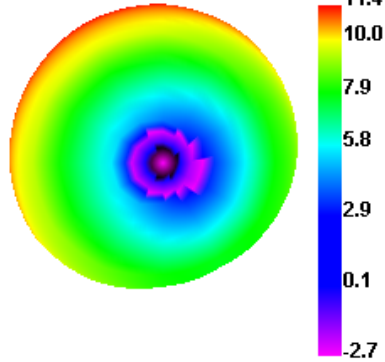
**Bluetooth 0 TRP**



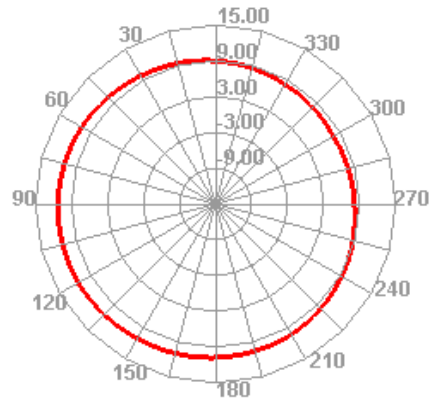
**Bluetooth 0 TRP H**



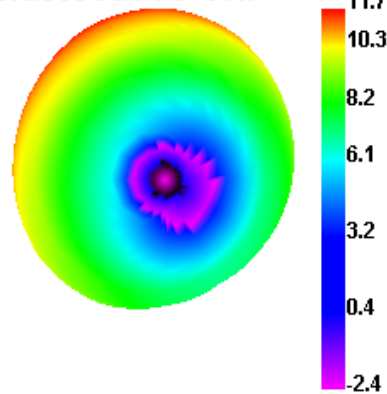
**Bluetooth 39 TRP**



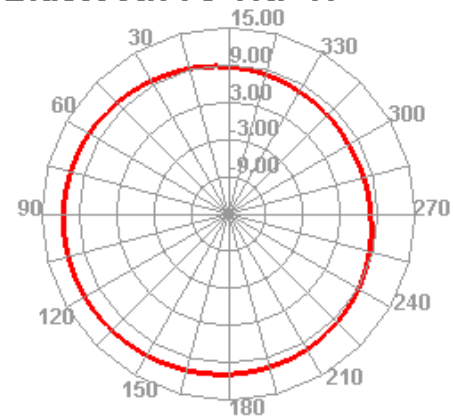
**Bluetooth 39 TRP H**



**Bluetooth 78 TRP**



**Bluetooth 78 TRP H**



### 4. BT Test

Test term	Environment	Max pairing distance	BT Call distance	
BT	Office	16-18m	10-12m	

### 5. Blueprint

