

## BT12C helmet Bluetooth headset



### an instruction manual

(1000)

Welcome to use this helmet Bluetooth headset. I hope you can read this manual carefully to make it easier to operate and install.

#### Product introduction:

This product uses the latest 5.3 Bluetooth chip, uses the latest Bluetooth technology, stereo and strong. Ultra-strong signal transmission, ultra-low power consumption, and support for all Bluetooth devices, the automatic answering function of incoming calls, no longer need to answer calls manually, safe and fast. Use 40MM strong magnetic high-quality speaker.

#### Power on/off:

Press the telephone symbol key “☎” Two to three seconds and the machine can be started. At this time, the indicator light will flash alternately red and blue, and the machine is in the starting state. Press the phone symbol key to turn off “☎” Two to three seconds later, if it can be turned off, there will be a prompt tone, and the light will not light up after turning off.

#### How to switch between Chinese and English voice:

After power-on, the indicator light flashes red and blue alternately. At this time, do not connect with the mobile phone, and When you call, there will be a mobile phone number broadcast. You can answer the call automatically after broadcast or press the “☎” to answer the call manually.

#### Connect two mobile phones at the same time:

After the Bluetooth headset is turned on, connect with the mobile phone A first, then turn off the Bluetooth of the mobile phone A, and then turn on the Bluetooth of the mobile phone B, and then connect two mobile phones at the same time.

#### How to connect with mobile phone:

After power-on, the indicator light flashes red and blue alternately. At this time, turn on the Bluetooth device on the mobile phone, search for the Bluetooth device on the mobile phone, find the "BT12C" point and connect it after a few seconds. Connected successfully. Once connected, the next time you use it, the phone Bluetooth and Bluetooth headset will be automatically connected when both are turned on.

#### Volume up/down/song switching:

Long press the "+" and "-" button to adjust the volume, Click the "+" or "-" button to switch songs

#### Answer the phone

When you call, there will be a mobile phone number broadcast, and then you can answer the call automatically, or you can press the telephone symbol key “☎” Answer the call manually.

#### Product charging:

The low power of the product will give a voice prompt for charging. It can be fully charged for 3-4 hours. The red light will be on when charging, and the red light will be off when fully charged.

#### Product parameters:

1. Bluetooth version: V5.3+EDR
2. Frequency range: 2.4026GHz - 2.480GHz
3. Transmission distance: above 10M
4. MIC distance: ≤ 1m
5. Lithium battery: 3.7V/1000 mAh
6. Charging time: 3-4 hours
7. Standby time: about 240 hours
8. Continuous working time: about 15-20 hours
9. Bluetooth name: BT12C

#### How to activate Siri function of mobile phone

Press the minus key "-" twice in succession to activate the Siri function.

#### Switch between automatic answering and non-automatic answering

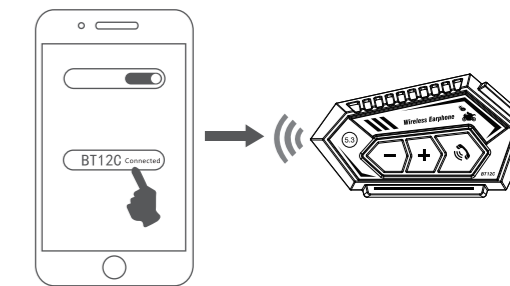
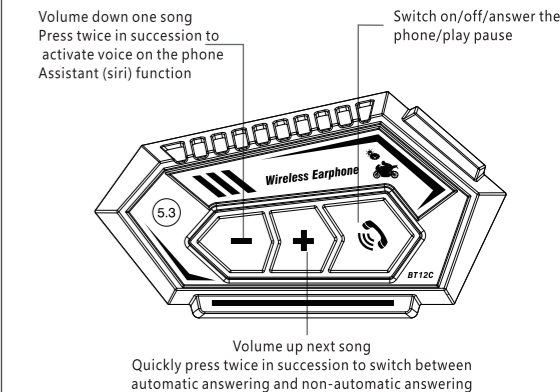
Press the minus button "-" quickly and continuously twice to switch between automatic answering and non-automatic answering

#### Package content:

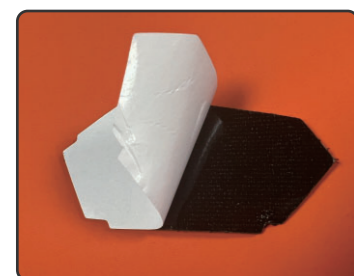
1. A helmet Bluetooth headset.
2. One charging cable.
3. A manual.
4. Two spare surgical stickers.
5. One spare cotton.



#### Equipment appearance and function introduction:



#### Installation instructions for helmets with thin edges:



Tick the velcro and remove the white release paper.



Stick to the position where the helmet is to be installed

#### installation diagram



#### Installation rendering



Installation of left horn:  
Spare fur round magicPaste and tear the white release paper



The spare hairy round velcro is torn off the white release paper and pasted on the ear space of the helmet.



See the left figure for installation. The horn is close to the ear, and the microphone rod is installed at a suitable position.



Installation of right horn:  
Spare wool round velcro tape, tear off white release paper



The spare round velcro with rough surface can tear off the white release paper, and the horn can be pasted on the right position.



The left and right horn connecting wires are hidden in the interior.

#### Applicable to the following helmets



#### Applicable to the following Bluetooth devices



#### Precautions for use of helmet Bluetooth headset

1. In order to protect your eardrum and hearing, do not turn the volume to the maximum.
2. Don't listen to music continuously for a long time.
3. Try to avoid collision.
4. Dust prevention, fire prevention and moisture prevention.
5. Remember to fully charge before using when going out.

**FCC Warning:**

This equipment has been tested and found to comply with the limits for a Class B digital device, pursuant to part 15 of the FCC Rules. These limits are designed to provide reasonable protection against harmful interference in a residential installation. This equipment generates, uses and can radiate radio frequency energy and, if not installed and used in accordance with the instructions, may cause harmful interference to radio communications. However, there is no guarantee that interference will not occur in a particular installation. If this equipment does cause harmful interference to radio or television reception, which can be determined by turning the equipment off and on, the user is encouraged to try to correct the interference by one or more of the following measures:

- Reorient or relocate the receiving antenna.
- Increase the separation between the equipment and receiver.
- Connect the equipment into an outlet on a circuit different from that to which the receiver is connected.
- Consult the dealer or an experienced radio/TV technician for help.

**Caution:** Any changes or modifications to this device not explicitly approved by manufacturer could void your authority to operate this equipment.

This device complies with part 15 of the FCC Rules. Operation is subject to the following two conditions:

(1) This device may not cause harmful interference, and (2) this device must accept any interference received, including interference that may cause undesired operation.

This equipment complies with FCC radiation exposure limits set forth for an uncontrolled environment. This equipment should be installed and operated with minimum distance 0cm between the radiator and your body.