

User Manual



1. The product is a Tuya Bluetooth lock, the administrator of the APP is the ultimate administrator of the lock, and the operation function of the lock end is an auxiliary operation, please be sure to download the Smart Life APP to bind the administrator, unless it can be ensured that the lock will not be used by unrelated people APP is bundled.
2. The square bar of the product needs to be positioned to unlock normally. Please be sure to insert the square bar into the front handle to the end, and then position the square bar correctly according to the instruction manual.
3. Before it is installed on the door, be sure to insert the square rod into the bottom of the front handle and position it correctly before trying to twist the key to unlock it. After the product is installed on the door, make sure the square rod is positioned correctly before twisting key. WARNING: Blindly twisting the key can cause mechanical failure of the product.
4. The front handle connecting wire terminal needs to be inserted into the female seat of the rear handle setting plate according to the marking (red to red), otherwise it will cause a short circuit.



Parameters

Cover: D70mm / Lever: L150mm / Height:62mm

Material:
Aluminum alloy+Acrylic

Available Thickness:
35mm ~ 55mm

Unlock Way:
Key/Fingerprint/password/Tuya APP

Power Supply:
4 x AAA Alkaline Batteries

Emergency Supply:
USB(Type-C Interface)

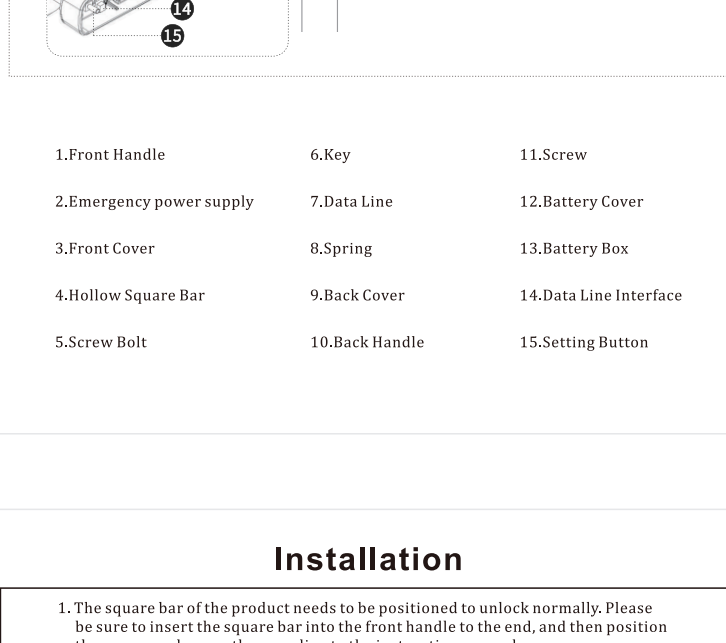
Working Voltage: 6V

Alarm Voltage: 4.8V

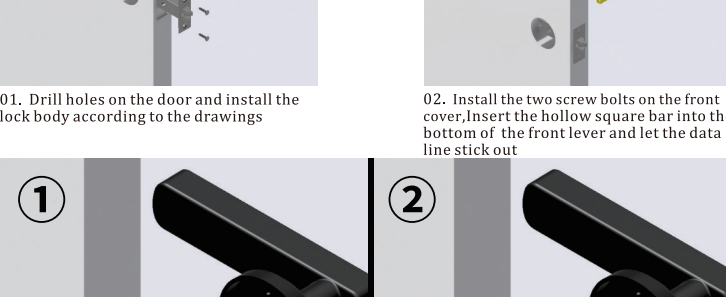
Capacity:
Fingerprint——50sets

Password——100sets

Parts list



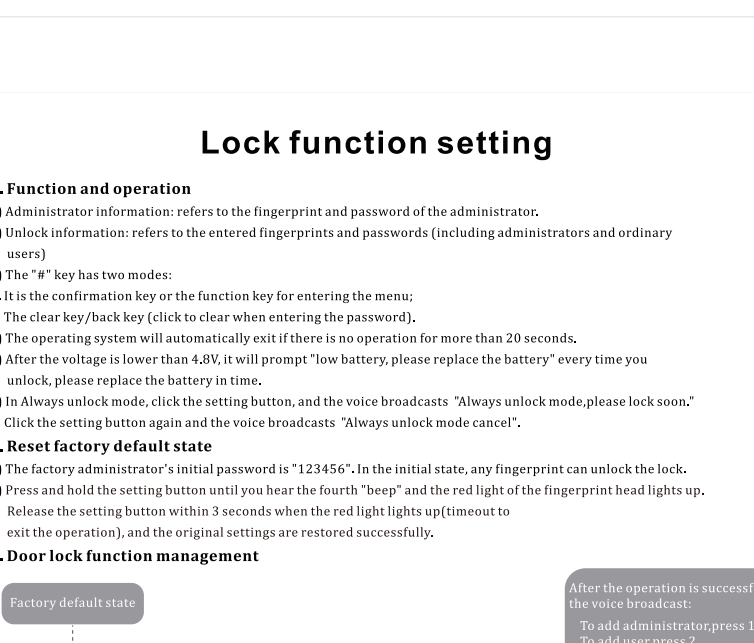
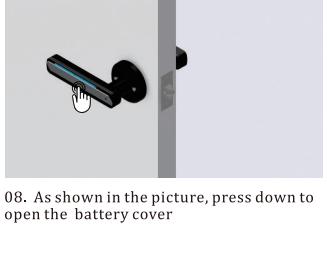
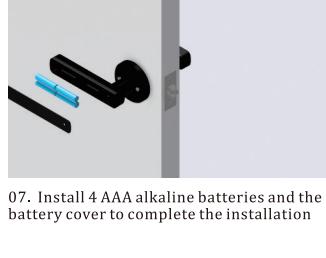
Overall



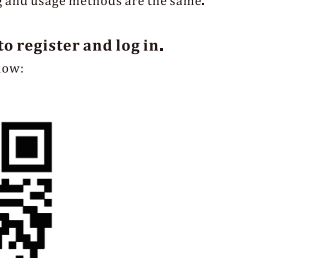
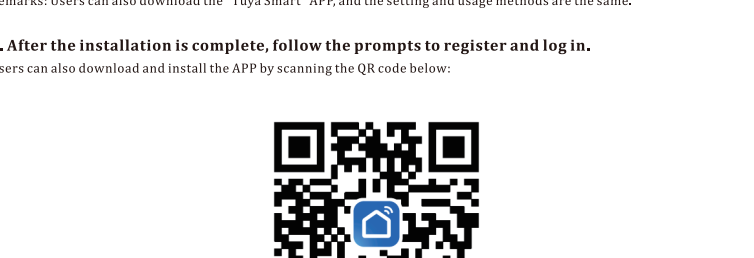
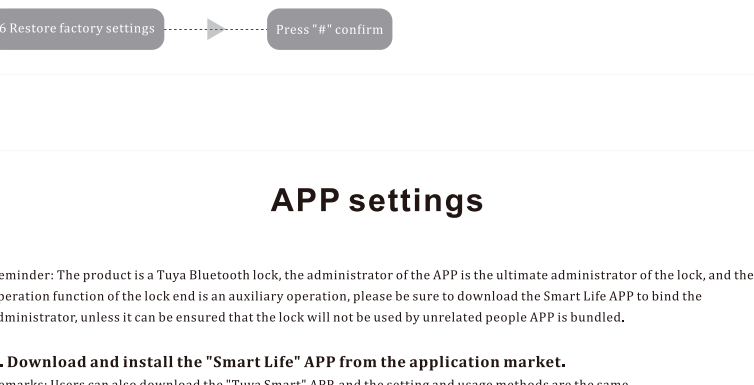
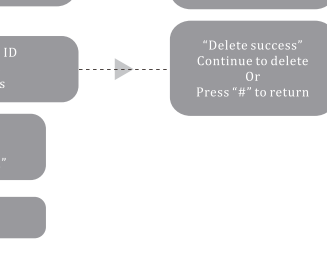
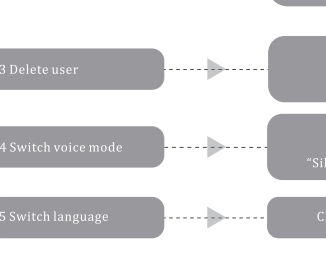
- | | | |
|--------------------------|----------------|------------------------|
| 1.Front Handle | 6.Key | 11.Screw |
| 2.Emergency power supply | 7.Data Line | 12.Battery Cover |
| 3.Front Cover | 8.Spring | 13.Battery Box |
| 4.Hollow Square Bar | 9.Back Cover | 14.Data Line Interface |
| 5.Screw Bolt | 10.Back Handle | 15.Setting Button |

Installation

1. The square bar of the product needs to be positioned to unlock normally. Please be sure to insert the square bar into the front handle to the end, and then position the square rod correctly according to the instruction manual.
2. Before it is installed on the door, be sure to insert the square rod into the bottom of the front handle and position it correctly before trying to twist the key to unlock it. After the product is installed on the door, make sure the square rod is positioned correctly before twisting key. WARNING: Blindly twisting the key can cause mechanical failure of the product.
3. The front handle connecting wire terminal needs to be inserted into the female seat of the rear handle setting plate according to the marking (red to red), otherwise it will cause a short circuit.



Installation



Lock function setting

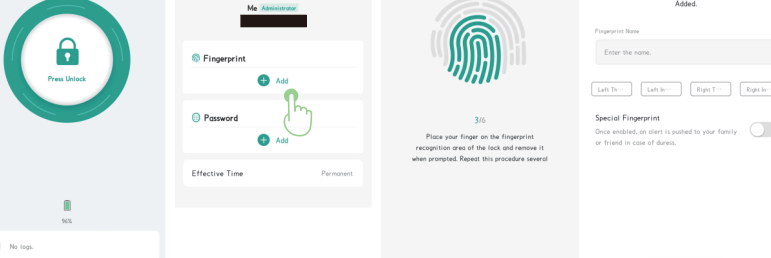
1. Function and operation

- 1) Administrator information: refers to the fingerprint and password of the administrator.
- 2) Unlock information: refers to the entered fingerprints and passwords (including administrators and ordinary users)
- 3) The "H" key has two modes:
A. It is the confirmation key or the function key for entering the menu;
B. The clear key/back key (click to clear when entering the password);
- 4) The operating system will automatically exit if there is no operation for more than 20 seconds.
- 5) After the voltage is lower than 4.8V, it will prompt "low battery, please replace the battery" every time you unlock, please replace the battery in time.
- 6) In Always unlock mode, click the setting button, and the voice broadcasts "Always unlock mode, please lock soon." Click the setting button again and the voice broadcasts "Always unlock mode cancel".

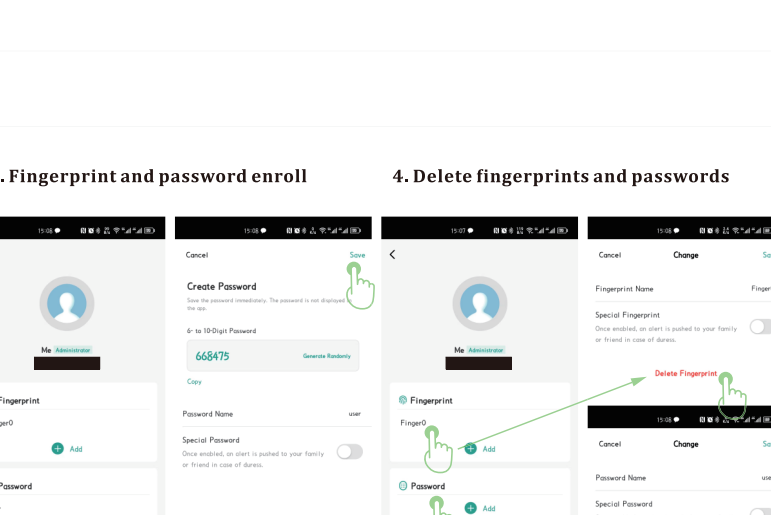
2. Reset factory default state

- 1) The factory administrator's initial password is "123456". In the initial state, any fingerprint can unlock the lock.
- 2) Press and hold the setting button until you hear the fourth "beep" and the red light of the fingerprint head lights up. Release the setting button within 3 seconds when the red light lights up (timeout to exit the operation), and the original settings are restored successfully.

3. Door lock function management



4. Menu list



APP settings

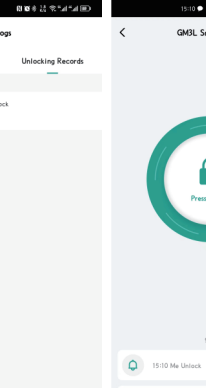
Reminder: The product is a Tuya Bluetooth lock, the administrator of the APP is the ultimate administrator of the lock, and the operation function of the lock end is an auxiliary operation, please be sure to download the Smart Life APP to bind the administrator, unless it can be ensured that the lock will not be used by unrelated people APP is bundled.

1. Download and install the "Smart Life" APP from the application market.

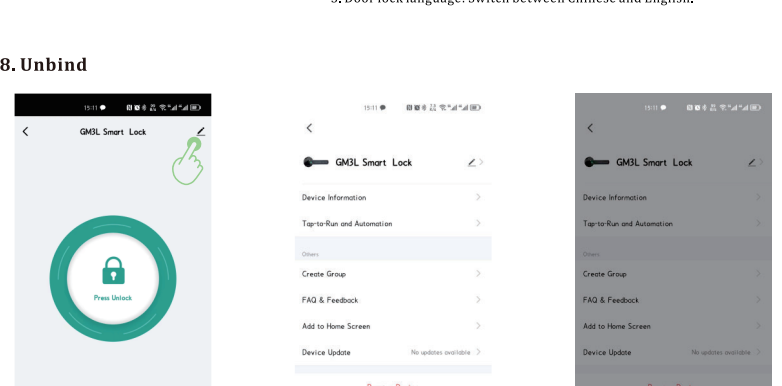
Remarks: Users can also download the "Tuya Smart" APP and the setting and usage methods are the same.

2. After the installation is complete, follow the prompts to register and log in.

Users can also download and install the APP by scanning the QR code below:



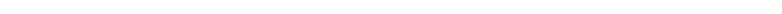
1. Register an account and add devices



Register an account with a mobile phone number

a. Click to add this device.
b. After the addition is successful, the voice prompts "connected".

2. Improve family information



Quickly select and complete family information

3. Fingerprint and password enroll

a. Enter the fingerprint, password and card information registration in the family.

b. To register a fingerprint, you need to press 6 times, and you can add a name note after entering the fingerprint.

3. Fingerprint and password enroll

c. The password can be randomly generated or fixed, and the password needs to be copied or remembered.

5. One-time password

6. Log

7. More

1. Automatic locking: Normally open door switch;
2. Door lock volume: Mute setting, lock end entering menu will broadcast voice;
3. Door lock language: Switch between Chinese and English.

8. Unbind

1. Unbind: The unlocking record is still retained;
2. Release and clear data: Restore factory settings, clear all information.

FCC warning:

1. This device should be installed and operated with minimum distance 0cm between the radiator&your body.
2. This device complies with part 15 of the FCC Rules. Operation is subject to the following two conditions:
 - (1) This device may not cause harmful interference, and
 - (2) This device must accept any interference received, including interference that may cause undesired operation.
3. Changes or modifications not expressly approved by the party responsible for compliance could void the user's authority to operate the equipment.
4. This equipment has been tested and found to comply with the limits for a Class B digital device, pursuant to part 15 of the FCC Rules. These limits are designed to provide reasonable protection against harmful interference in a residential installation. This equipment generates, uses and can radiate radio frequency energy and, if not installed and used in accordance with the instructions, may cause harmful interference to radio communications. However, there is no guarantee that interference will not occur in a particular installation. If this equipment does cause harmful interference to radio or television reception, which can be determined by turning the equipment off and on, the user is encouraged to try to correct the interference by one or more of the following measures:
 - Reorient or relocate the receiving antenna.
 - Increase the separation between the equipment and receiver.
 - Connect the equipment into an outlet on a circuit different from that to which the receiver is connected.
 - Consult the dealer or an experienced radio/TV technician for help.