

尺寸: 70\*70 mm

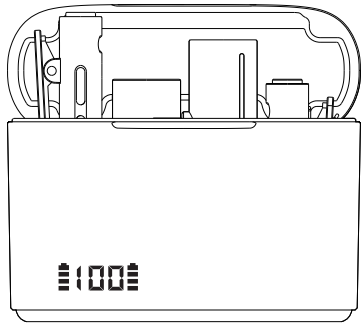
材质: 105g铜版纸

印刷:

折叠方式: 风琴折页

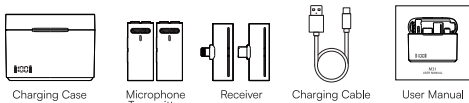
70MM

70MM



M31  
USER MANUAL

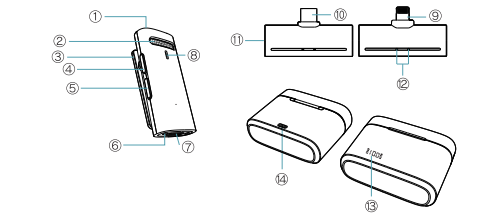
**Packing List**



- Package Contents:**
1. Microphone Transmitter x2
  2. Receiver x2
  3. Charging Case x1
  4. Charging Cable x1
  5. User Manual x1

**Note:**  
This product is a smart wireless microphone that provides professional-grade recording output. Plug and play, no app required.

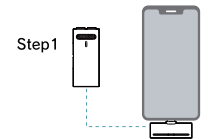
**Product Overview**



- ① Pickup Microphone
- ② Windproof net /MIC
- ③ Microphone clip
- ④ Power button of microphone
- ⑤ Function button
- ⑥ Charging pin
- ⑦ Type-c charging port of microphone
- ⑧ Indicator light of microphone
- ⑨ Lightning port to connect phone
- ⑩ Type-c port to connect phone
- ⑪ Receiver charging port
- ⑫ Indicator light of receiver
- ⑬ Battery indicator light of case
- ⑭ Type-c charging port of case

**How to use**

**Step1:** Connect the receiver to phone with port, the indicator light is flash blue

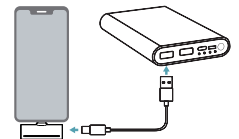


**Step2:** Press power button of microphone, the indicator light flashes blue and red alternately, means the microphone is turned on



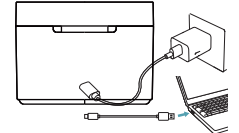
**Step3:** After receiver connected with transmitter, the indicator blue light of receiver and indicator blue and red light of transmitter keeps always on, then open the phone camera, live APP or other APPs, and then to use the microphone to receive sound.

**Special Note:**  
For the use of port: there is no battery in receiver, and no need to recharge during live. If the phone is low power during live, it can be recharged directly through the receiver's port.

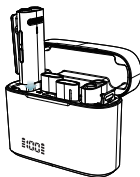


**How to charging**

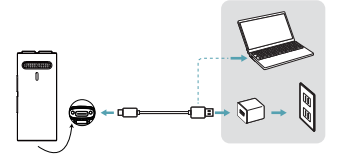
1. Charging the case: Use the type-c charging cable (provided) to connect your computer (with power on) or an adapter (not provided) to your charging case. The display flashes single-digit numbers while charging.



2. Charging the Microphone Transmitter: A. Put the microphone transmitter into the charging case and close the case. The charge case indicator number lights up and the corresponding battery symbol flashes.



B. Use the type-c charging cable (provided) to connect your computer (with power on) or an adapter (not provided) to your microphone transmitter. The red light is always on and light off after fully charged.



**About UI**

**Microphone Transmitter**

Function	Button	LED
Power on (Unconnected)	Long Press ④	Blinking alternately red and green
Power off	Long Press ④	All the lights go out
Connected		Blue and red light always on
Noise reduction on	Automatically on	Blue and red light always on
Noise reduction off	Press once ⑤	Blue light always on
Reverberation	Long Press ⑤	Red light blinks once then the blue and red light always on
Silent mode on	Press twice ⑤	Blue light is blinks
Silent mode off	Press twice ⑤	Blue and red light always on
Switch the volume level	Press the ④ key to switch cycle up to 3 levels	Level 1: the indicator light blinks once Level 2: the indicator light blinks twice Level 3: the indicator light blinks 3 times

**Receiver**

Function		LED
Power on (Not paired with the microphone transmitter)	Automatically power on after plugging in the mobile phone port	Blue light blinks
Power off	Automatically shut down after unplugging	Lights is off
Paired with the microphone transmitter		Blue light is always on

**Note:** some Android phone OTG functions need to be opened manually to use, and most mobile phone OTG functions need not be opened manually by default.

**Specification**

Frequency: 2.4Ghz Digital Frequency  
 Frequency response: 20Hz-20kHz  
 Sampling frequency: 48kHz  
 Transmission range: up to 20m (w/o any obstacle)  
 Signal to noise ratio: ≥ 75dB  
 Sensitivity: -38dB ± 3dB  
 Battery capacity: 140mAh (Transmitter)  
 500mAh (Charging case)  
 Working duration: up to 7h  
 Interface: USB-C  
 Weight: 95g  
 Dimension: 83\*32\*61mm



Certificate	QC QC PASS	warranty card	Model: _____
			QC: _____
			Date: _____

FCC Warning:

This equipment has been tested and found to comply with the limits for a Class B digital device, pursuant to part 15 of the FCC Rules. These limits are designed to provide reasonable protection against harmful interference in a residential installation. This equipment generates, uses and can radiate radio frequency energy and, if not installed and used in accordance with the instructions, may cause harmful interference to radio communications. However, there is no guarantee that interference will not occur in a particular installation. If this equipment does cause harmful interference to radio or television reception, which can be determined by turning the equipment off and on, the user is encouraged to try to correct the interference by one or more of the following measures:

- Reorient or relocate the receiving antenna.
- Increase the separation between the equipment and receiver.
- Connect the equipment into an outlet on a circuit different from that to which the receiver is connected.
- Consult the dealer or an experienced radio/TV technician for help.

Caution: Any changes or modifications to this device not explicitly approved by manufacturer could void your authority to operate this equipment.

This device complies with part 15 of the FCC Rules. Operation is subject to the following two conditions:

(1) This device may not cause harmful interference, and (2) this device must accept any interference received, including interference that may cause undesired operation.

This equipment complies with FCC radiation exposure limits set forth for an uncontrolled environment. This equipment should be installed and operated with minimum distance 0cm between the radiator and your body.