

PLEGBLE

Foldable Drone User Manual



Model: PL-510

If there is any issue with your order,
please contact below email to ask for warranty

Email: PL_Business@outlook.com



24 Months Coverage



Made in China

✉ PL_Business@outlook.com

📧 plbusiness@outlook.com

📍 810021 Building 1, Gdewen Business Apartment, Longgang District, Shenzhen, China

Table of Contents

Part 1	Disclaimer & Safety Guidelines	01
Part 2	General Information	02
2.1	Packing List	
2.2	Product Overview	
2.3	Button Functions	
Part 3	Product Specifications	06
Part 4	Installation	06
4.1	Remote Controller Battery Installation	
4.2	Drone Battery Installation	
4.3	Propeller Replacement	
4.4	Phone Holder	
Part 5	Charging the Battery of Drone	08
Part 6	Using the APP	09
6.1	Download APP	
6.2	Connect to Wi-Fi	
Part 7	Operation Guide	10
7.1	Pair the controller with the Drone	
7.2	Arbitrate Operation	
7.3	Calibrating the Drone	
7.4	One Button Take-Off / Land & Emergency Landing	
Part 8	Function Details	13
8.1	Mode of High / Medium / Low Speed	
8.2	360° Flips	
8.3	Camera Angle Adjustment	
8.4	Headless Mode	
8.5	Trimmer	
8.6	Optical Flow Positioning	
Part 9	Troubles Shooting	17
Part 10	Maintenance and Care	18
Part 11	FAQs	18
Part 12	18 Month Limited Warranty	19
Part 13	FCC Statement	20

Part 1 Disclaimer & Safety Guidelines

Please read the disclaimer carefully before using this product. By using it, you hereby agree to this disclaimer and signify that you have read them fully.

1. Disclaimer & Safety Guidelines

1. Fly in open areas. 2. Maintain line of sight. 3. Fly below 164 feet (50m).

2. Fly above or near obstacles, crowds, cars, open water, public road, high voltage power lines, trees or airport.

5. DO NOT fly the drone in the magnetic interference area, radio interference area, and government regulated no-fly zones.

4. DO NOT use this product in severe environments such as rain, snow, fog and wind, etc.

5. Please always stay away from the rotating propellers and motors.

6. Always keep small and electrical parts out of the reach of children.

7. Battery charging should be done in a location out of reach of children. When charging it must be kept away from flammable materials such as bed, carpetwood floor etc.

8. DO NOT reverse polarity or puncture batteries. DO NOT store the batteries near any heat source.

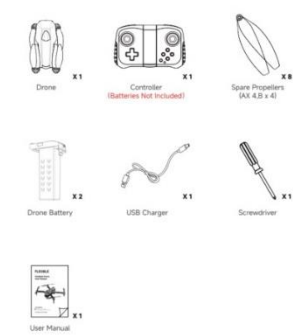
9. Dispose of the drone and batteries in accordance with local regulations. DO NOT treat it as household waste.

PLEGBLE accepts no liability for damage, injury, or any legal responsibility incurred directly or indirectly from the use of this product. The user shall observe safe and lawful practices, including but not limited to those set forth in these Safety Guidelines. PLEGBLE reserves the right to update this user manual.

01

Part 2 General Information

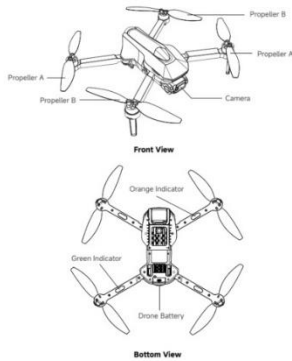
2.1 Packing List



02

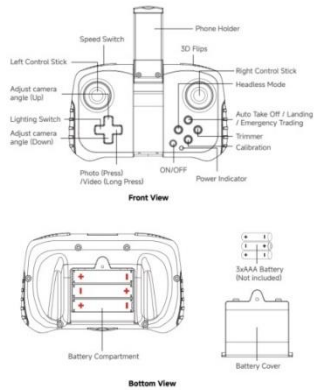
2.2 Product Overview

Drone Details



03

Controller Details



04

2.3 Button Functions

Button	Function	Operation Instruction
⏻	Power On / Off	Long press to enter Power On/Off
⬆️	Camera Adjustment	Adjust the camera angle up
⬇️	Camera Adjustment	Adjust the camera angle down
⬅️	Lighting Switch	Press the LIGHTING key to enter On/Off drone light
📷	Photo/Video Mode	When connected to the APP press to enter photo taking mode, and long press to enter video recording mode
🛬	Auto Take Off / Landing	Press enter auto Take Off/Landing mode. Long press enter Emergency Landing mode.
🌀	Headless Mode	Press to Enter/Exit Headless Mode
⚙️	Calibration	Press enter Calibration Mode
🔧	Trimmer	Long press to enter Trimmer Mode
🌀	360° Flips	Press the flip button to initiate up-and-down and left-and-right tumbling motions while operating the maneuvering controls.
🔊	Speed Switch	The drone is set to low speed by default. Press the Speed button down once for medium speed and there are two beeps from the remote. Press it down again for high speed and there are three beeps from the remote. A third press will get back to low speed and there is one beep from the remote.

05

Part 3 Product Specifications

Max Flight Distance	About 262 feet / 80m
FPV Transmission Distance	About 164 feet / 50m
Flight Time	About 26 Mins (2 Battery)
Photo Resolution	1080P HD Camera
Battery Capacity	1200mAh/3.7V
Charging Time	About 60 Mins
Product Size	216*178*66mm
Product Weight	165g

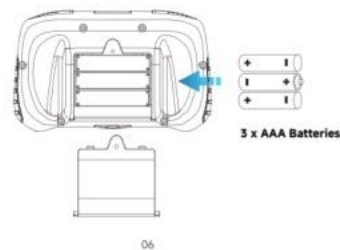
Part 4 Installation

4.1 Remote Controller Battery Installation

Open the battery cover on the back of the controller; insert the three AAA batteries (not included) into the battery compartment, and close the battery cover to complete the installation.

Important Note:

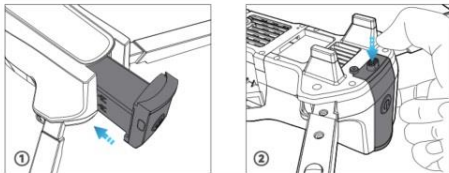
When installing the batteries, please pay attention to the Positive and negative polarity of the battery to ensure the correct installation of the batteries. Do not mix old and new batteries. When the remote controller's battery run low, the controller will start beeping, and its indicator light will blink.



4.2 Drone Battery Installation

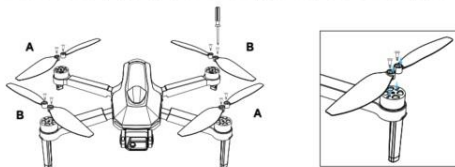
Before battery installation, please remove the supplied 2 batteries from the kit and fully charge them (Refer to Part 5 Charging the Battery of Drone).

1. Please push the battery to the end until you hear a click sound. Once you hear the click, the battery installation is complete. Long-press the ON/OFF button to start. The LEDs on the drone will flash (As shown in figure ①).
2. If the battery is depleted, please press the button and pull it out for taking out the battery (As shown in figure ②).



4.3 Propeller Replacement

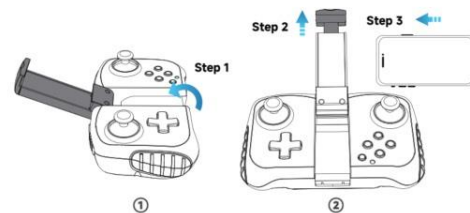
If the drone is not flying stably after a crash or drop, please replace all damaged propellers.



Important Notes:

Every propeller has indicated alphabet A and B. Please install the propellers in correspondence with blade A and blade B as shown above. Otherwise the drone will fail to take off.

4.4 Phone Holder

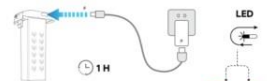


Part 5 Charging the Battery of Drone

When the drone battery is low, both the indicator lights on the drone and the remote control will blink continuously, accompanied by a continuous 'Di Di' beep from the remote control. In this situation, the drone will automatically land after about 40 seconds.

To recharge the battery:

- Plug the USB charging cable into a USB charging port on the computer, power bank, or USB adapter.
- The indicator lights will be steady red during the charging process.
- Charging is complete in approximately 1 hour when the lights turn steady green.



Tips:

- Please always use the usb cables provided.
- Keep the charger current minimum 5V/1-2A.
- If not used for a long time, recharge every 3 months to keep the battery active.

Part 6 Using the App

6.1 Download APP



IOS

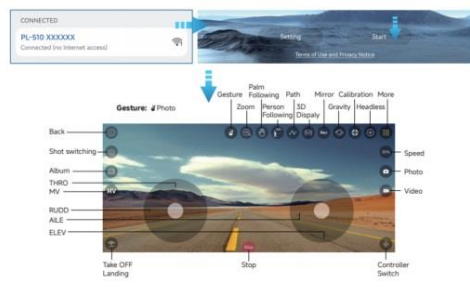


Android on Google play

Scan the QR code, connect to the App Store or Google Play and download the WIFI UAV application for free. Required Operating Systems: IOS 9.0 or later / Android 5.0 or later.

6.2 Connect to WIFI

- Turn on the product power switch.
- Go to the WIFI settings of your mobile device.
- Locate the device's WIFI hotspot named "PL-510 Drone XXXXXX" in the WIFI settings. Click on the connection until the connection is successful.
- Open the app, and click the start icon to enter the real-time interface.

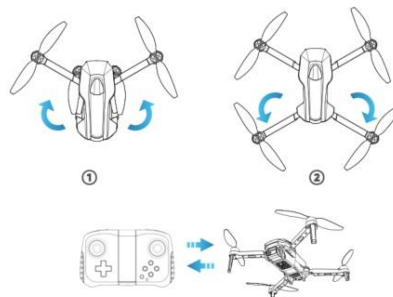


09

Part 7 Operation Guide

7.1 Pair the controller with the Drone

1. First, open the wings by unfolding the front arms and then opening the rear arms (as shown in figures ① and ②).
2. Turn on the drone first and place it on a flat surface with the head forward (the LEDs on the drone will flash).

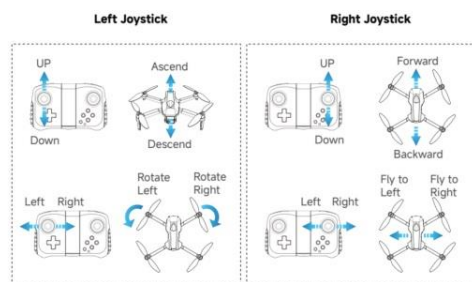


Important Note

- Ensure that the drone is placed on a leveled surface; otherwise, it will fail to pair with the controller.
- Before turning on the controller, make sure the power indicator of the drone is turned on; otherwise, a successful pairing cannot be achieved.
- If the drone keeps blinking and fails to take off after powering on the controller, it indicates low battery. Please charge it.
- In case of pairing failure, turn off both the drone and the controller, and then repeat the steps.

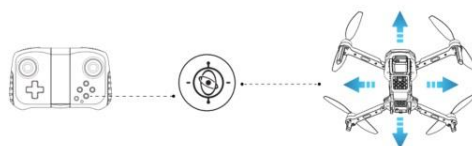
10

7.2 Joystick Operation



7.3 Calibrating the Drone

In the power-on state, press the calibration button to enter calibration mode. The remote control will beep 'Di', and the indicator on the drone will start flashing. Wait until the indicator stops flashing; the calibration process is now complete.



Note:

- If the drone is not flying stably, please land it on a level surface and calibrate.
- For a better flying experience, perform a calibration of the drone before each flight.

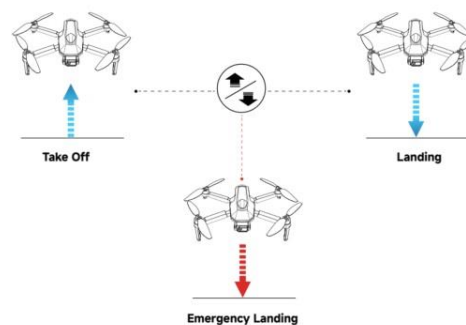
11

7.4 One Button Take-Off / Landing & Emergency Landing

Button	Function	Operation Instruction
	Take Off	Long press to enter Power On/Off
	Landing	While in the air, press the same button and the drone will land automatically.
	Emergency Landing	In an event of an emergency where the drone needs to be stopped immediately, LONG PRESS the button.

Note:

Press the One Key Take-off button, and the drone will ascend and hover at approximately 1.5 meters in height. Ensure the drone is placed on a flat surface with enough climbing space before taking off.



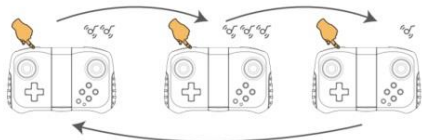
12

Part 8 Function Details

8.1 Mode of High / Medium / Low Speed

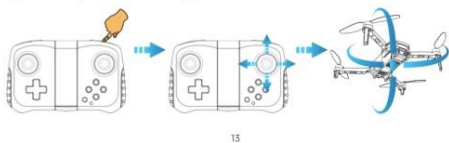
By default, the drone is set at a low-speed level. To increase the speed, press the 'Speed Switch' button on the controller; it will emit a 'beep beep' sound, indicating it is now at medium speed level. Press it again, and it will emit a 'beep beep beep', indicating high-speed level.

Speed	Flying for the environment	Gear Adjustment Sound
Low Speed	Flight speed 3.6m/s, suitable for indoor and outdoor use in windless conditions.	Beep
Medium Speed	Flight speed 5.0m/s, suitable for outdoor use in light wind conditions	Beep,Beep
High speed	Flight speed 6.6m/s, suitable for high speed flights.	Beep,Beep,Beep



8.2 360° Flips

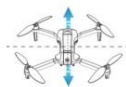
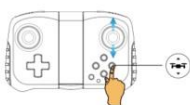
After flying the drone to a height of over 2 meters, press down the ring joystick to activate the 360° flips function. Then, move the right control stick forward, backward, leftward, or rightward to flip the drone accordingly.



13

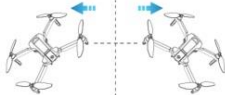
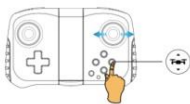
While in Headless Mode, pushing the right joystick forward will make the drone fly in the direction its head faced during takeoff. To maintain awareness of the drone's direction, we recommend the pilot stays facing the same direction as the drone's head during takeoff. This ensures that when the pilot pushes the right joystick forward or backward, the drone moves in the corresponding direction relative to the pilot. Similarly, if the pilot pushes the right joystick left or right, the drone will move left or right relative to the pilot.

8.5 Trimmer



F/B Sideways Drift Trim:

If the drone tends to drift forward, press down the Trimmer button and do not release it while pushing the right joystick down to re-balance the drone. If the drone tends to drift backward, press down the Trimmer button and do not release it while pushing the right joystick up to re-balance the drone.



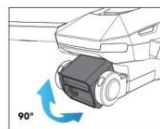
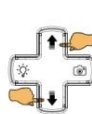
L/R Sideways Drift Trim:

If the drone tends to drift left, press down the Trimmer button and hold it while pushing the right joystick to the right to re-balance the drone. Conversely, if the drone tends to drift right, press down the Trimmer button and hold it while pushing the right joystick to the left to re-balance the drone.

15

8.3 Camera Angle Adjustment

During the flight, you can press the camera button to adjust the camera title up/down (The camera has 90° tilt angle).

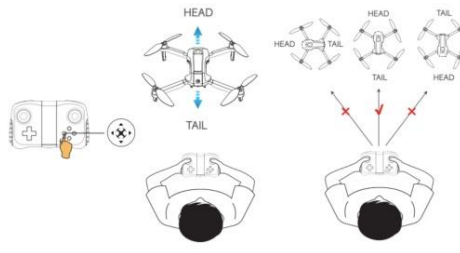


8.4 Headless Mode

Important Note:

Please familiarize yourself with the Headless Mode function before using it. Otherwise, there is a risk of losing the drone and incurring unnecessary loss.

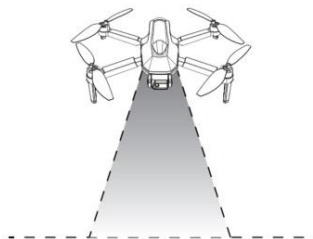
1. After pairing or calibration, short-press the Headless Mode button on the remote controller. In Headless Mode, the indicator light of the drone will keep flashing, and the remote controller will beep once.
2. Short-press the Headless Mode button again; the indicator light on the drone will turn solid, indicating that the drone has exited Headless Mode.



14

8.6 Optical Flow Positioning

The drone is equipped with Optical Flow Positioning function. When not operated, the Optical Flow Positioning function is automatically activated within 2 seconds and the drone will hover steadily within a fixed range.



Tips:

- When controlling the drone to the left or right, the Optical Flow Positioning function will be automatically disabled. When not operating, the Optical Flow Positioning function will automatically activate within 2 seconds.
- Keep the sensor clean at all times. The vision system is only effective when the drone is within the altitude range of 10 meters.
- Ensure that the light is bright enough, and the surfaces have clear textures so that the vision system can acquire movement information by recognizing the ground textures.
- Note that the vision system may not function properly when the drone is flying over water, low-light ground, and surfaces without clear patterns or textures.

16

Part 9 Troubles Shooting

Problems	Reasons	Solutions
The light on the drone are flashing and the drone is not responding	Insufficient battery power	Fully charge the battery
	Controller is NOT connected to the drone	Turn off the drone and controller.Reconnect them by turning on the drone first then the controller.
	Unbalanced position	Place the drone on a horizontal flat surface and reconnect them
	Cannot pair due to the drone being powered on for a long time.	Turn off the drone and controller.Reconnect them by turning on the drone first
The propellers spin but doesn't take off	Insufficient battery power	Fully charge the battery
	Propellers NOT installed correctly	Check the propellers installation (A to A, B to B).
	Damage propellers	Replace new propellers
	Something being caught in the propellers or gears.	Clear gears and propellers
The drone doesn't fly properly after a crash	Propellers NOT installed correctly;	Check the propellers (A to A, B to B).
	Damaged propellers	Replace new propellers
	The balance of gyro is confused;	Calibrate the drone or press trim button to fine tune the direction
	Propellers have hit the Blade Guard	Make sure blades work well
	Motor burnt out	Replace motors
Drone shaking during flight / noisy propeller	Damaged propeller	Check the propellers (A to A, B to B).
		Replace new propellers
	Jibs not fully open	Open the propeller arm completely.

17

Q: What are the three speeds of drone regulation?

A: The drone regulation includes three speeds: 3.6m/s, 5.0m/s, and 6.6m/s. For an optimal flight experience, it is advised to use the first speed for indoor flying and the second or third speed for outdoor flights.

Q: Can I control two drones simultaneously with one remote control?

A: Unfortunately, this is not possible. Our remote control and drone operate on a one-to-one frequency pairing system. Once successfully paired, the remote control cannot be matched with another drone, and vice versa.

Q: I can't view the drone screen when I open the app what's wrong?

A: If the drone's battery is too low, successful connection may not be possible. If you encounter any further issues or have additional questions, please reach out to our online customer service for detailed assistance.

Part 12 Limited 18-Month Warranty



What this warranty covers?

PLEGBLE warrants to the original purchaser of the product that the product shall be free of defects in design, assembly, material, or workmanship.

What the period of coverage is?

PLEGBLE warrants the product for 18 Months.

What will we do to correct problems?

PLEGBLE will repair or replace, at its option, any defective product free of charge (except for shipping charges for the product).

What is not covered by this warranty?

All above warranties are null and void if the PLEGBLE product is not provided to PLEGBLE for inspection upon PLEGBLE's request at the sole expense of the purchaser, or if PLEGBLE determines that the PLEGBLE product has been improperly installed, altered in any way, or tampered with. The PLEGBLE Product Warranty does not protect against acts of God such as flood, earthquake, lightning, war, vandalism, theft, normal use wear and tear, erosion, depletion, obsolescence, abuse, damage due to low voltage disturbances (e.g. brownouts or sags), non-authorized program, or system equipment modification or alteration.

How to claim the warranty?

Please contact retailers or visit PL_Business@outlook.com for more information. To extend the warranty period, please visit our website and register as our member within 1 month of purchasing the product.

Disclaimer

While every effort has been made to ensure that the information and procedures in this guide are accurate and complete, no liability can be accepted for any errors or omissions. We reserve the right to make changes without further notice to any products mentioned herein.

19

Part 10 Maintenance and Care

1. Check thoroughly, including the propellers, every time after a crash or violent impact.
2. Before the first flight, learn how to apply the "Emergency Land" function, which is on page 8 of this manual.
3. Do not charge the battery if it is hot. Let it cool down first.
4. If you do not plan to use your drone for an extended period, remove the batteries from the controller to avoid battery leakage, which may damage the controller.
5. Keep the drone and the controller in a location where is cool and dry, and avoid longtime exposure to direct sunlight.

Part 11 FAQs

Q: Why won't my drone take off?

A: To troubleshoot the issue, please follow these steps:

1. Ensure that the propellers are undamaged, and the batteries are fully charged.
2. Connect both the drone and the remote control to the same frequency. Turn on both devices, and after a few seconds, you should hear a 'drop' sound, indicating successful frequency pairing. Once paired, the blinking on the drone and remote control should cease.
3. Push the left joystick of the remote control upward, or utilize the one-touch takeoff function on the remote. If you still encounter difficulties taking off, feel free to reach out to our online customer service. We are committed to providing you with detailed after-sales assistance.

Q: How can I tell when the battery is low, and will the RC drone suddenly drop from a height?

A: When the battery is nearly depleted, the drone signals low battery with rapid flashing lights, accompanied by the remote control emitting a 'di, di, di' sound to warn you. Additionally, the app will provide a notification urging you to either return the RC drone to its takeoff point or fly at a lower altitude. Simultaneously, the drone will gradually descend when the battery is low.

Q: My drone takes off and drifts, what should I do?

A: If your drone tends to drift after takeoff, follow these steps to address the issue:

1. Place the drone on a flat, horizontal surface to ensure stability.
2. Before flying, perform a gyroscope calibration. This helps the drone sense its own attitude, providing enhanced stability during flight.

18

Part 13 FCC Statement

Note: This equipment has been tested and found to comply with the limits for a Class B digital device, pursuant to Part 15 of the FCC Rules. These limits are designed to provide reasonable protection against harmful interference in a residential installation.

This equipment generates uses and can radiate radio frequency energy and, if not installed and used in accordance with the instructions, may cause harmful interference to radio communications. However, there is no guarantee that interference will not occur in a particular installation. If this equipment does cause harmful interference to radio or television reception, which can be determined by turning the equipment off and on, the user is encouraged to try to correct the interference by one or more of the following measures:

- Reorient or relocate the receiving antenna.
- Increase the separation between the equipment and receiver.
- Connect the equipment into an outlet on a circuit different from that to which the receiver is connected.
- Consult the dealer or an experienced radio/TV technician for help.

This device complies with part 15 of the FCC Rules. Operation is subject to the following two conditions:

- (1) This device may not cause harmful interference.
- (2) This device must accept any interference received, including interference that may cause undesired operation.

Caution!

Changes or modifications not expressly approved by the party responsible for compliance could void the user's authority to operate the equipment.

**The device has been evaluated to meet general RF exposure requirement.
The device can be used in portable exposure condition without restriction.**

20