



Print Server

LP-N110W Instruction Manual



User Manual Contents

User Manual Contents.....	1
I.Product Introduction.....	2
II.Product Specifications.....	2
III.Product Display.....	3
IV.Product Packaging Details.....	3
V.System Requirements.....	3
VI. Hardware Installation.....	4
VII.Configure Print Server to Connect to the Local Network.....	4
1.Configure Wired Network Connection.....	4
2.Configure Wireless(WiFi) Network Connection.....	4
VIII.Add Printer to Computer.....	7
1. Add Printer on Windows Computer Using the Installation Tool.....	7
2.Manual Addition of Printer on Windows.....	10
3.Add a printer to a macOS computer.....	16

I. Product Introduction

1.1 Product Introduction

The Quxas Print Server enables traditional USB printers to become network printers, allowing multiple computers to print using the same printer within the same network. This enhances printing efficiency and convenience. The print server is compatible with over 90% of printers.

Setting up the print server is simple and involves three main steps: hardware installation, print server configuration, and configuring "Add Printer" on the computer.

Refer to item II for hardware installation.

Refer to item III for print server configuration.

Refer to item IV for configuring "Add Printer" on the computer.

*If any of the above items are missing or damaged, please get in touch with us.

*If this user manual is not clear enough for you, please download a more clear

Tool download/video on our website: www.quxas.com

II. Product Specifications

Model Name	Print Server
Hardware Configuration	CPU: 580MHz, Memory: 128MB, Flash: 16MB
Network Protocols	Wi-Fi: 2.4GHz, IEEE 802.11b/g/n, 10M/100 Adaptive LAN Ports x2; Compliance with Standards: IEEE 802.3, IEEE 802.3u
Interfaces	One USB 2.0, two 10M/100 Adaptive LAN Ports, one factory reset button, one power port
Indicators	PWR;SYS;USB;WIFI;LAN1;LAN2
Current Voltage	DC 5V ~ 1A
Management Functions	Supports
Print Protocols	RAW protocol, IPP protocol
Operating Temperature	0-40 °C
Operating Humidity	10% - 90% RH (Non-condensing)
Storage Temperature	-40-70 °C
Storage Humidity	5%-90%RH(Non-condensing)

III.Product Display



- 1** USB2.0-Connect printer
- 2** LAN1 port-configure print server or wired network connection
- 3** LAN2 port-wired network connection
- 4** 5V/1A power port
- 5** Factory reset button
- 6** Power, system, WiFi, LAN1, LAN2, USB indicators

IV.Product Packaging Details

Print Server*1

Power Adapter*1

Power Cord*1

Ethernet Cable*1

User Manual*1

V.System Requirements

The print server is compatible with Windows, Linux, and macOS operating systems. It requires the printer to have the corresponding drivers for these systems.

VI. Hardware Installation

Retrieve the print server and its power adapter. Connect the power adapter to the print server, then use a USB data cable to connect the printer to the USB port on the print server.

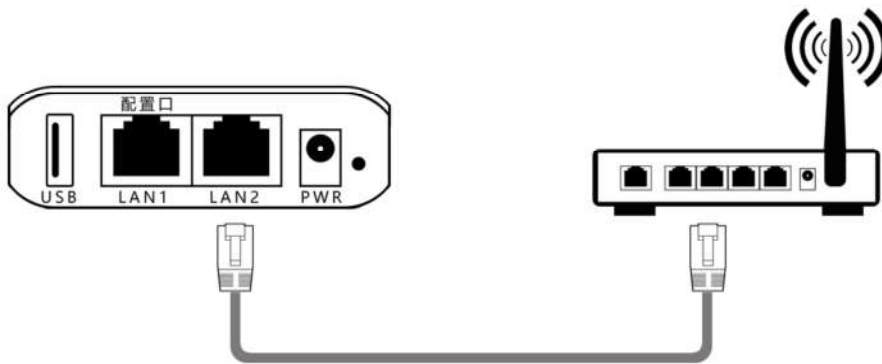
VII. Configure Print Server to Connect to the Local Network

The print server can be connected to the network either through a wired or wireless connection. Please do not configure both methods simultaneously.

1. Configure Wired Network Connection

After powering on the print server and connecting the USB device, use an Ethernet cable to connect the LAN2 port to the router or switch.

Note: If the local network does not use DHCP to assign IP addresses, manually set the IP address for the print server. Refer to the official website's video tutorial for specific instructions.

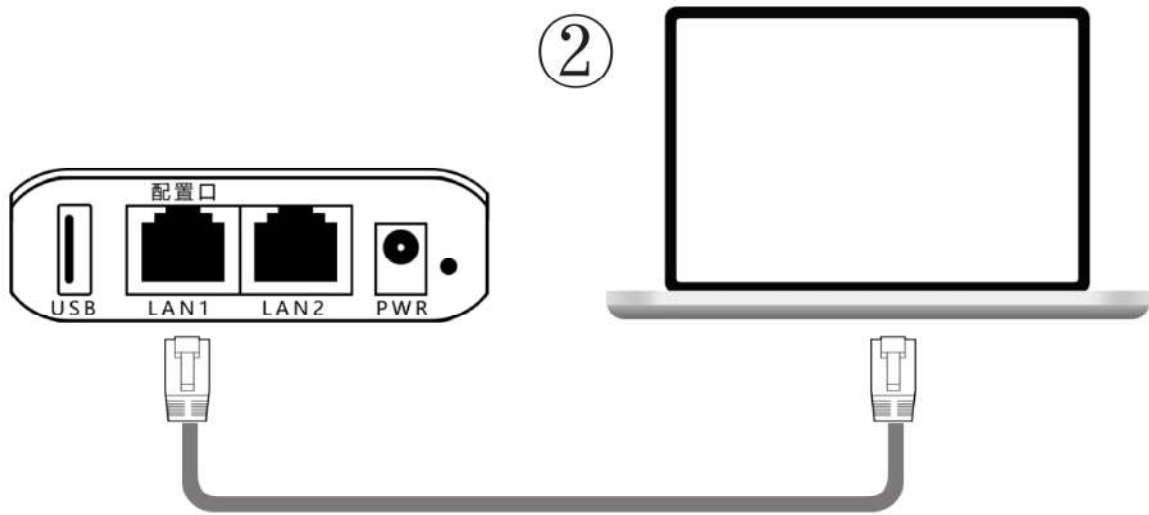


2. Configure Wireless(WiFi) Network Connection

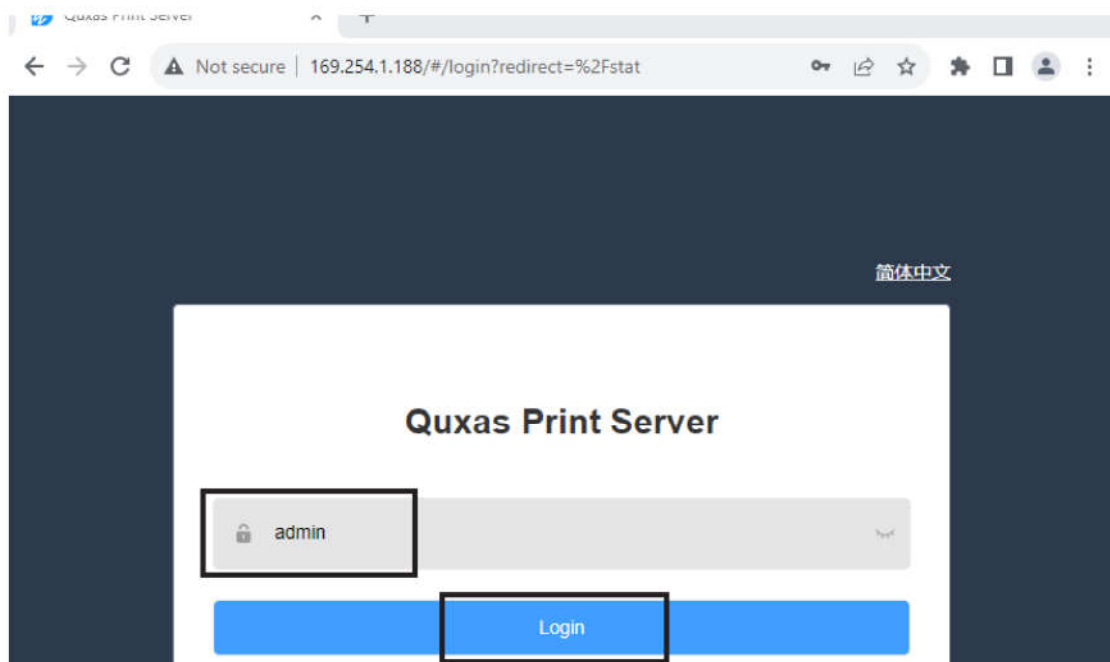
2.1. The print server can be wirelessly connected using the computer's Wi-Fi or Ethernet port.

To configure wirelessly, the computer needs to search and connect to the Wi-Fi network named "USBServer_Setup." Then ①, access the print server's management interface by visiting 192.168.188.188 using a web browser. Alternatively, connect the print server's LAN1 port to the computer's Ethernet port using an Ethernet cable and access the management interface by visiting 169.254.1.188 in the browser ②.

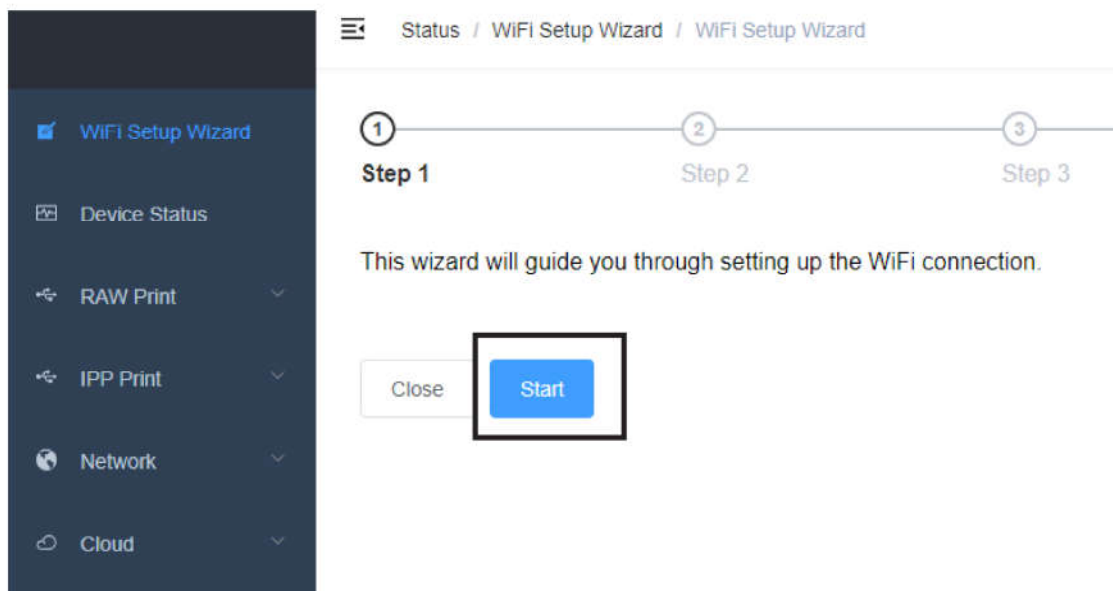




2.2. Enter the key "admin" in the key box and click "Login".



2.3. Click the Wi-Fi Setup Wizard in the navigation bar and click the "Start" button.



2.4. After clicking "Start," select the desired Wi-Fi network from the search results.

SSID	Quality	Cipher	BSSID
Wireless 2.4G	64	psk2	78:D3:8D:E5:4F:26
Lanconvey_2.4G	59	psk2	60:45:CB:CE:C2:D0

2.5. Enter the password for the selected Wi-Fi in the Wi-Fi key box and click the "Submit" button.

* SSID: Lanconvey_2.4G

* Encryption: WPA-PSK2

* Wi-Fi Key: *****

Close Search again Submit

2.6. After clicking "Submit," the print server will save, reboot, and configure the Wi-Fi parameters. Wait for 30-60 seconds. For wired configuration, the page will display the configuration result. For wireless (Wi-Fi) configuration, the page will not show the result. Instead, observe the Cloud indicator light; a steady light indicates successful network configuration, while blinking indicates a configuration failure.

Status / WiFi Setup Wizard / WiFi Setup Wizard

Configuring WiFi for the Print Server

The Print Server will try to connect to your router

Please wait 30-60 seconds until this page inform you success or not

Please notice if you are using a mobile phone to setup:

1. The WiFi connection will be lost when the Print Server is configuring the WiFi
2. Please reconnect the WiFi to "USBServer_Setup"
3. Then come back to this page and wait for the configure result

VIII.Add Printer to Computer

For Windows computers, you can quickly add the printer using Quxas' installation tool or manually through the following steps. For macOS systems, manual addition is required (no quick add tool available).

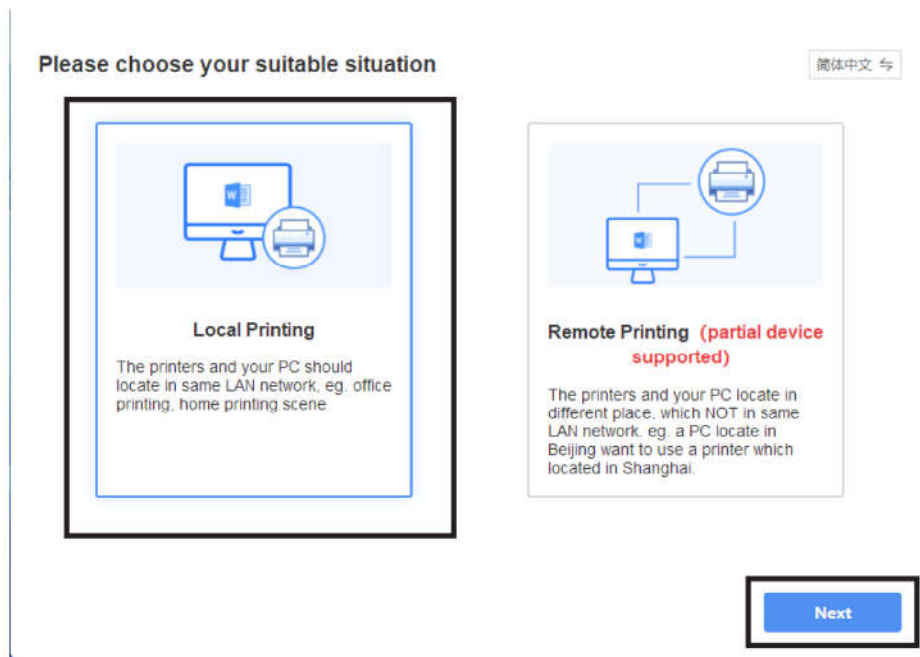
1. Add Printer on Windows Computer Using the Installation Tool

Note: Using the installation tool is not the only method to add a printer. If unsuccessful with the installation tool, try adding the printer manually.

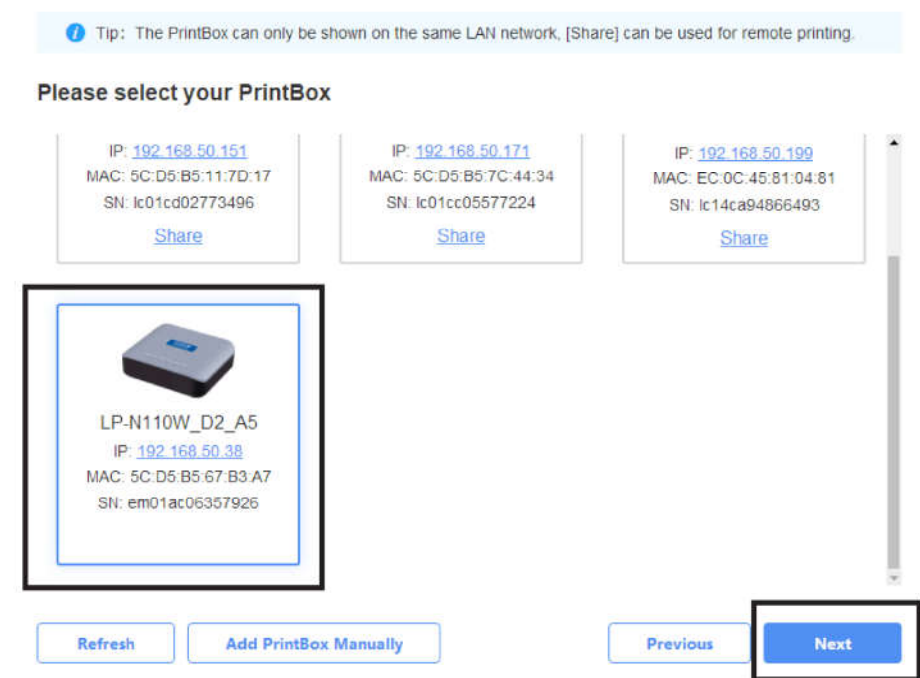
1.1.Download and open the installation tool from the Quxas official website.

Official website: www.quxas.com

1.2.Open the installation tool,Select "Local Print" and click "Next."

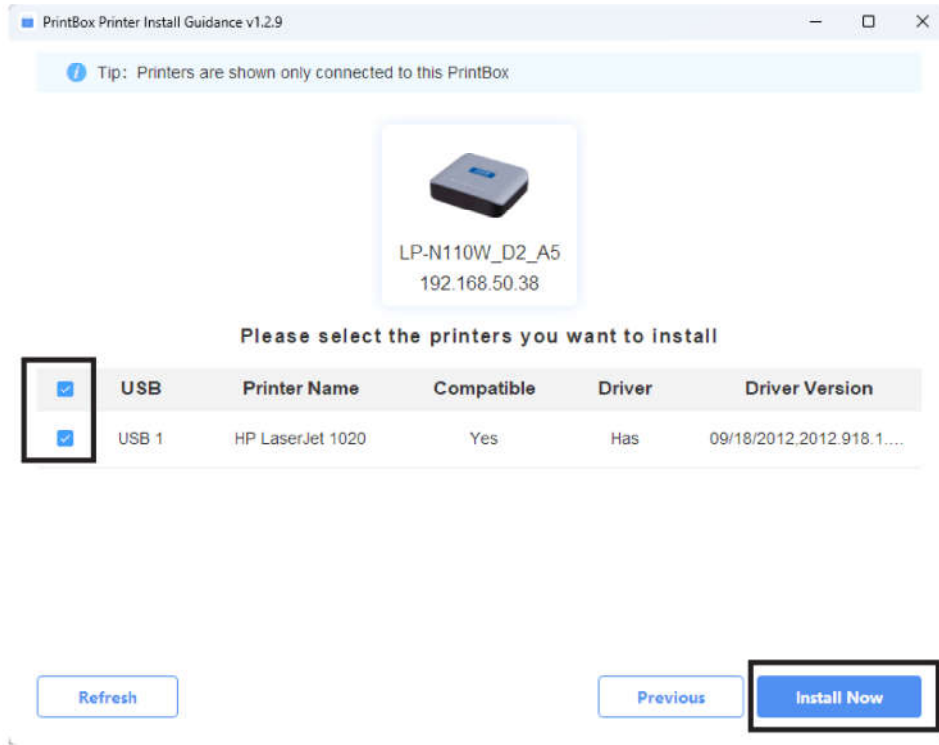


1.3.The installation tool will search for Quxas print servers in the local network. Choose the print server from the search results and click "Next."



1.4. The installation tool automatically prints the printer model of the server, detects and matches the corresponding driver for the identified model, selects the printers to be installed, and then clicks "Install Now" for immediate installation.

Note: If the installation tool cannot match the printer driver corresponding to the printer model, you will need to download the printer driver manually and then proceed with the installation using the "Add Printer" option.



1.5. The tool automatically creates a TCP/IP port for adding printers, downloads the printer driver, and then proceeds to automatically install the printer driver.



1.6. Once the tool completes the printer addition, perform a test print. If the test page prints successfully, the printer setup is complete.

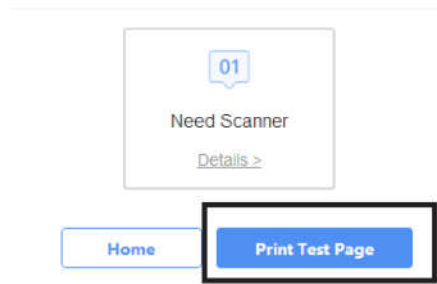


Printer installed successfully! You can click the button below to send the test page

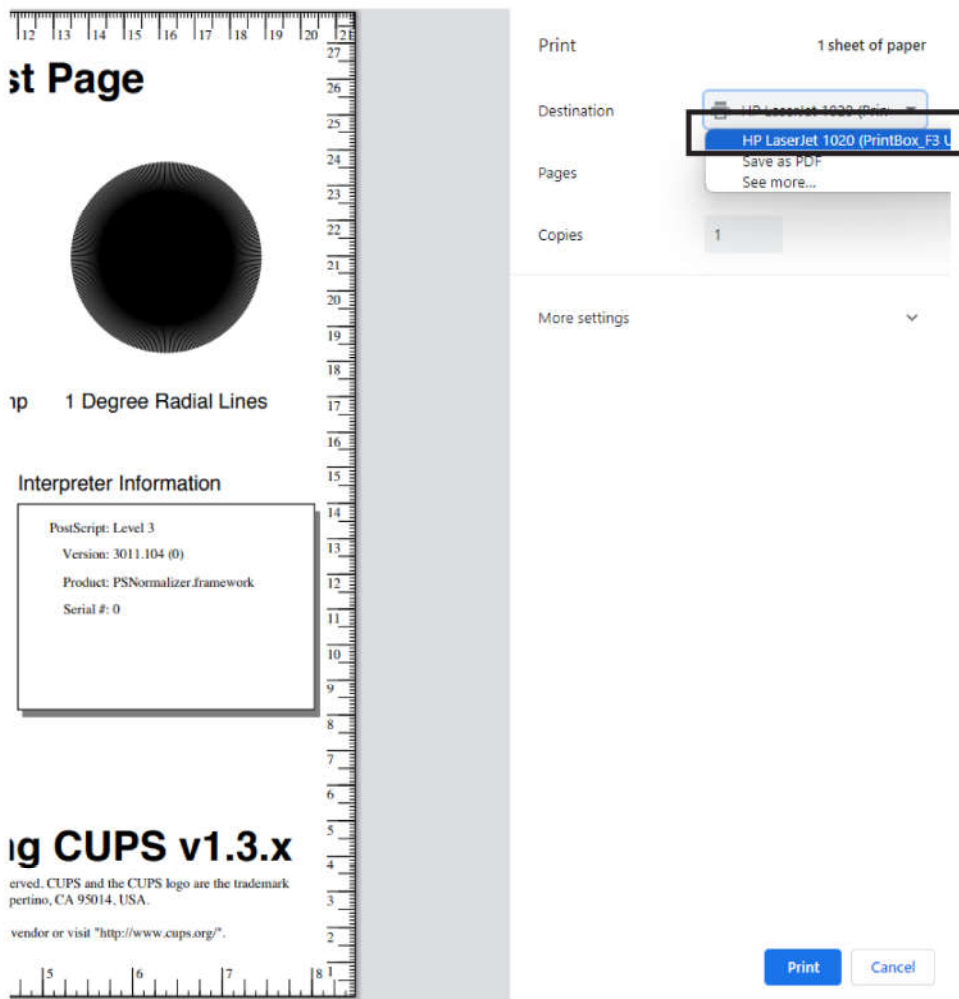
Default printer has been set to: HP LaserJet 1020 (PrintBox_A5 USB1)

Following printers are available to print on this PC now

[\[HP LaserJet 1020 \(PrintBox_A5 USB1\)\]](#)



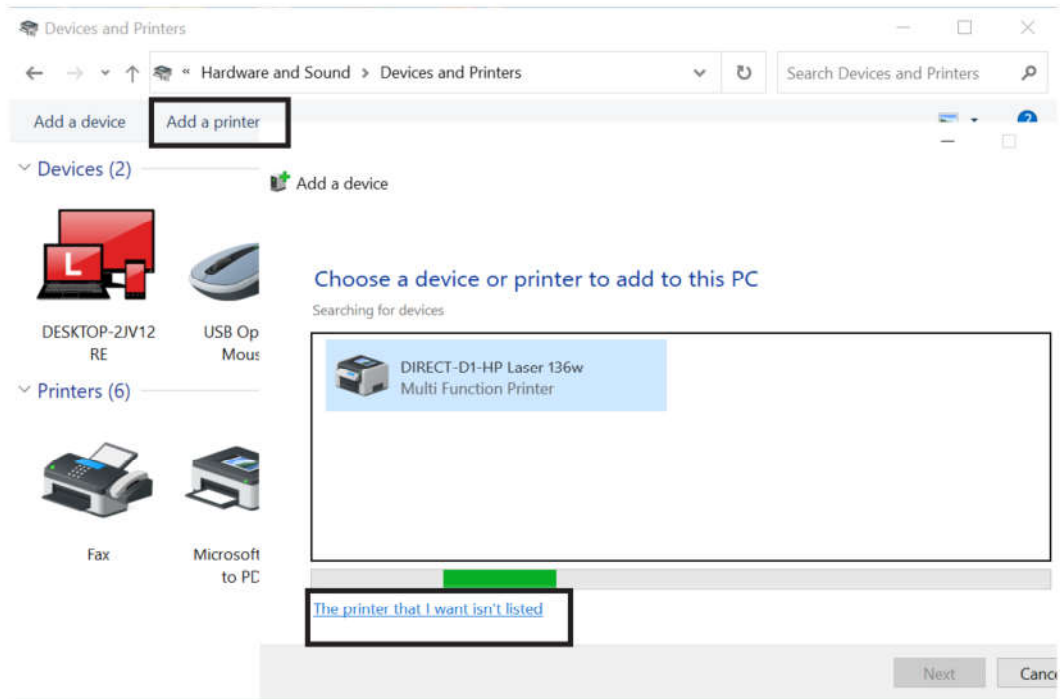
1.7. The usage of connecting the printer directly to the computer is the same as connecting through the printer. After opening the document to be printed, click on print, select the new printer added through the installation tool in the printer options, and then print.



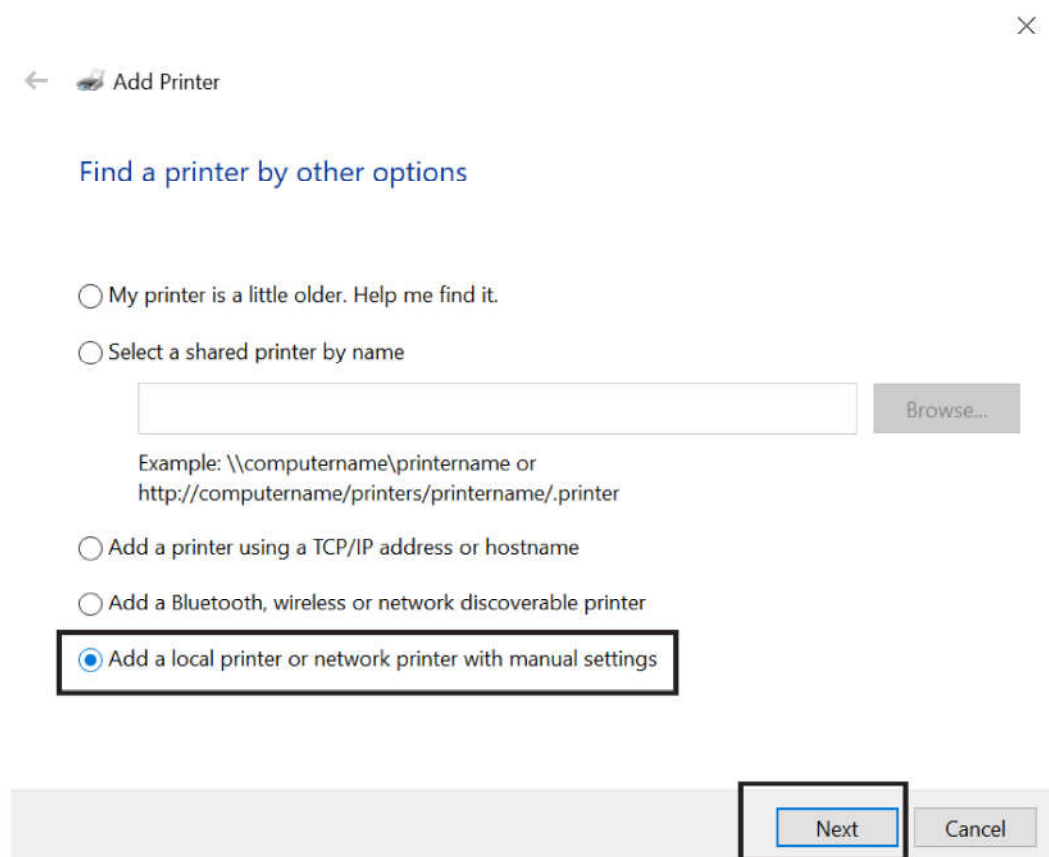
2.Manual Addition of Printer on Windows

2.1.For Windows 10 and earlier systems, open the control panel, navigate to "Devices and Printers," click "Add a printer," and then click "The printer I want isn't listed."

Note: For Windows 11, go to the system "Settings," click "Bluetooth & devices," then select "Printers & scanners," click "Add device," choose "The printer I want isn't listed," and then click "Add a printer manually."



2.2.Choose to manually add a local printer or network printer, and click "Next."



2.3. Select to create a new port, choose Standard TCP/IP Port, and click "Next."

← Add Printer

Choose a printer port

A printer port is a type of connection that allows your computer to exchange information with a printer.

Use an existing port: LPT1: (Printer Port)

Create a new port:
Type of port: Local Port
Local Port
Standard TCP/IP Port

Next Cancel

2.4. Input the IP address of the print server in the Hostname or IP address box, customize the port name (optional), uncheck "Query the printer and automatically select the driver to use," and then click "Next."

Note: The print server's IP address is provided during wireless (Wi-Fi) configuration or can be found using the installation tool.

← Add Printer

Type a printer hostname or IP address

Device type: TCP/IP Device

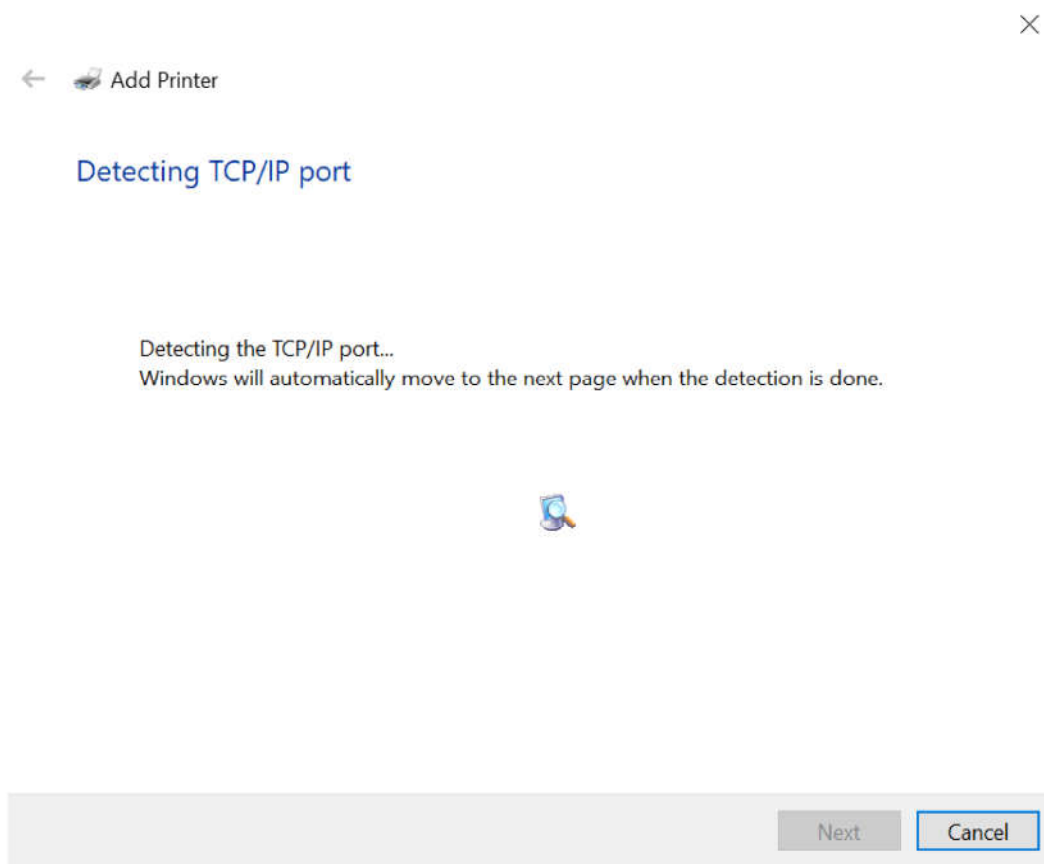
Hostname or IP address: 192.168.50.38

Port name: 192.168.50.38

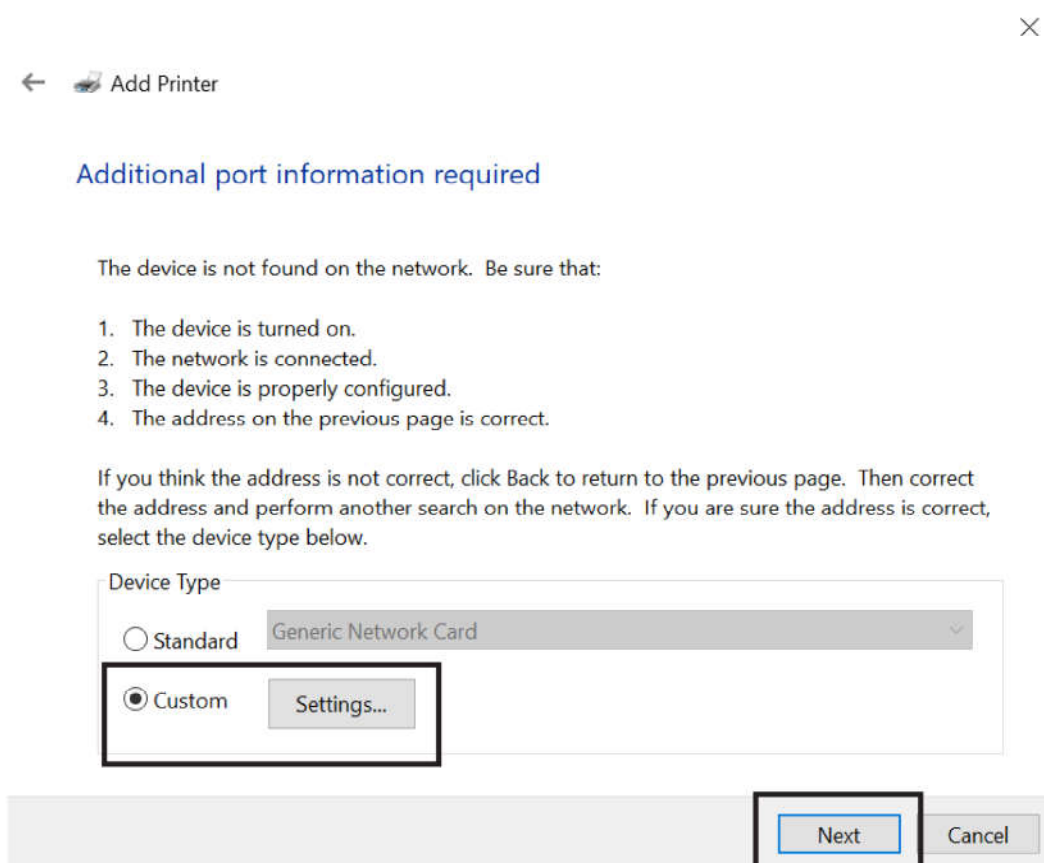
Query the printer and automatically select the driver to use

Next Cancel

2.5. Wait for the detection of the TCP/IP port, approximately 30 seconds.

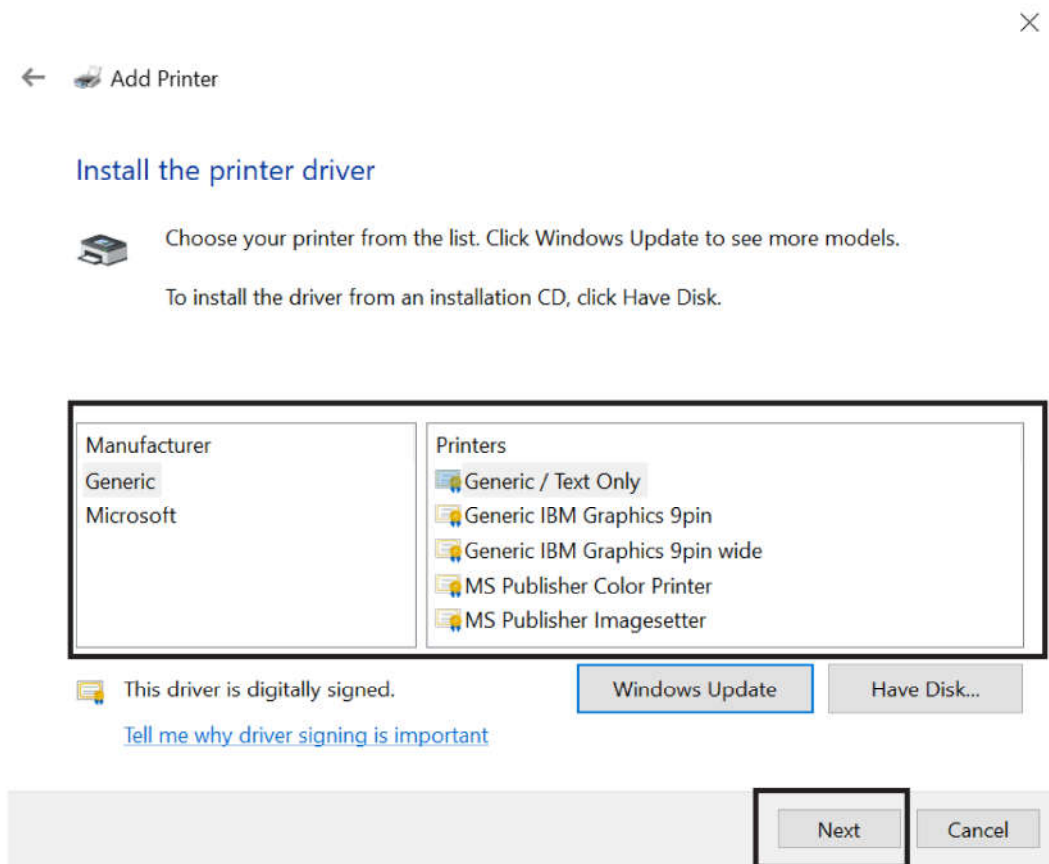


2.6 Choose "Custom," and click "Next" (no need to configure the parameters in "Settings").

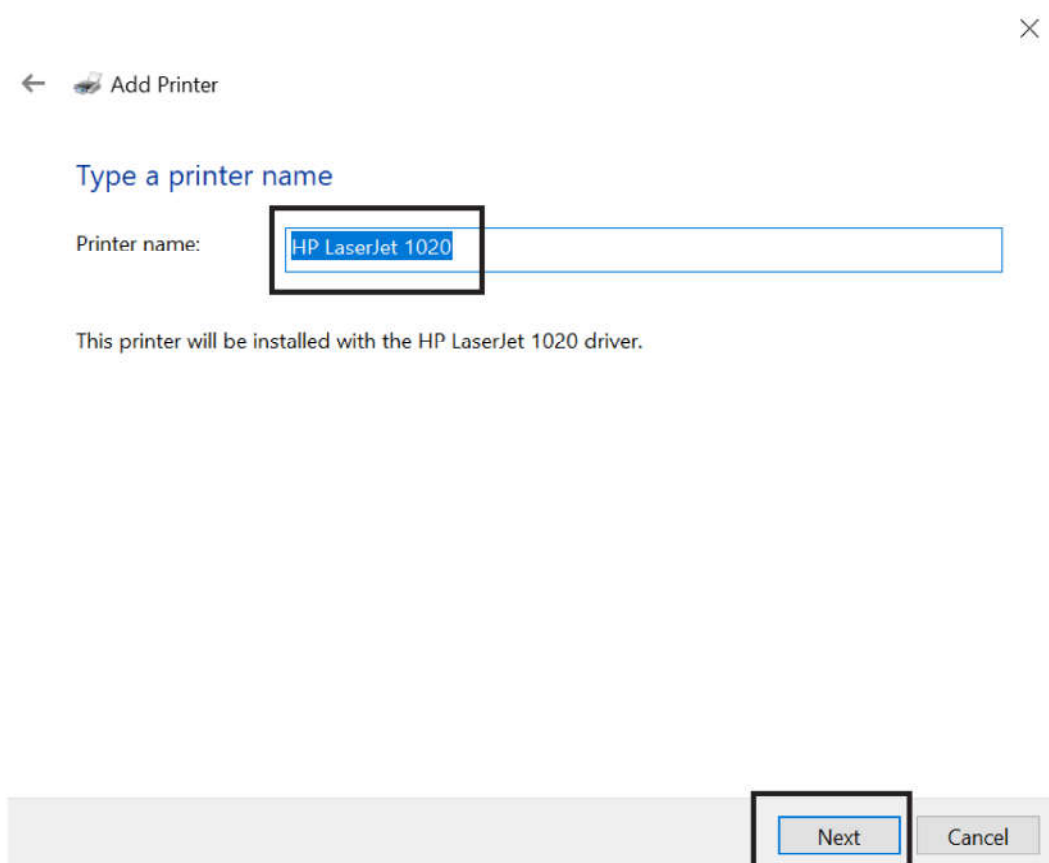


2.7.If the computer previously installed the printer driver, select the brand and model of the printer from the list, and click "Next."

Note: If the computer has not installed the printer driver before, refer to steps 2.10 and beyond for further instructions.



2.8.Optionally, customize the name of the printer, and click "Next."

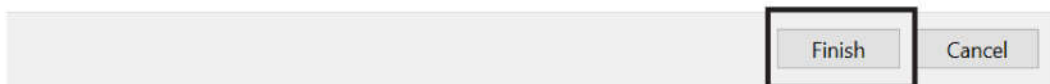
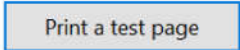


2.9. After completing the addition, print a test page to verify the settings. If the test page prints successfully, click "Finish," indicating successful addition of the printer.

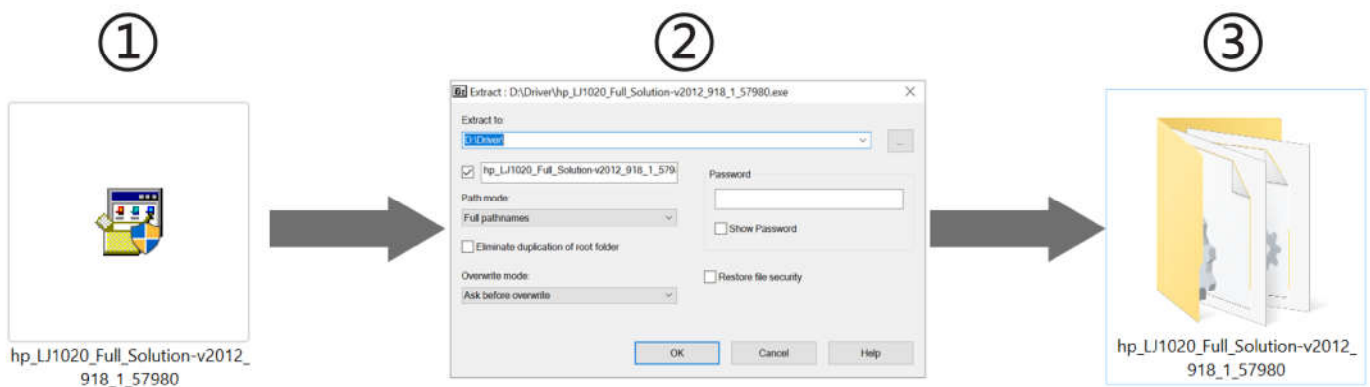


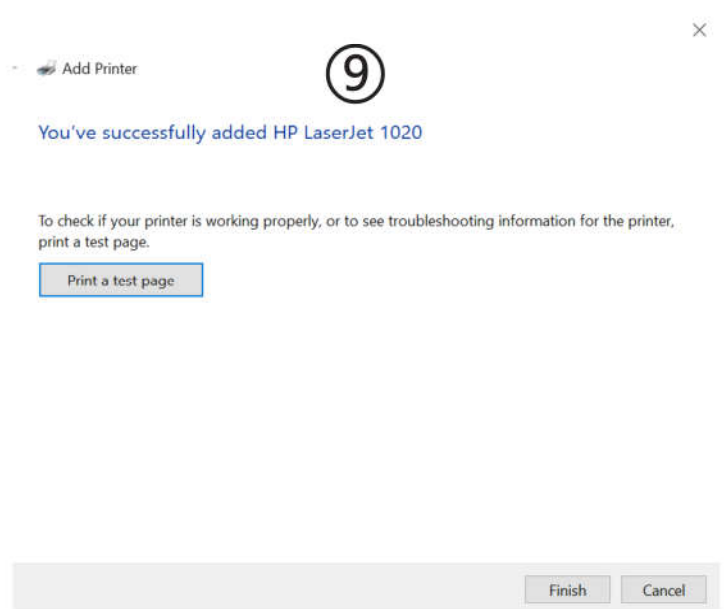
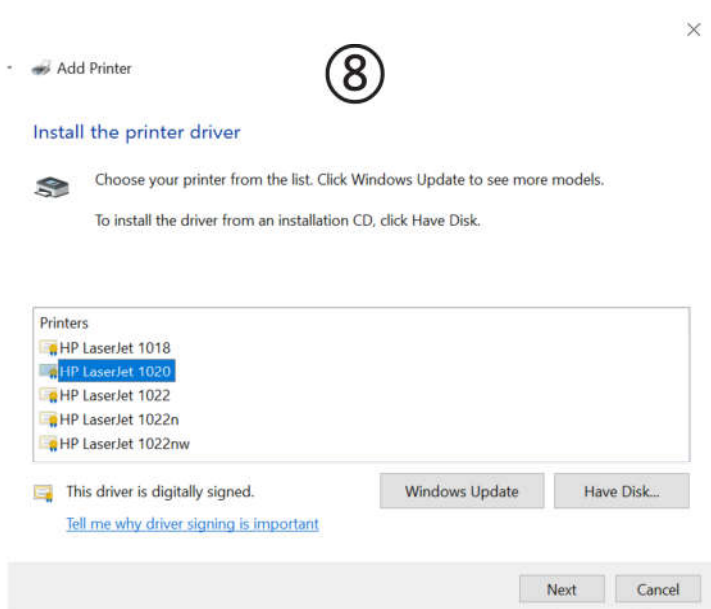
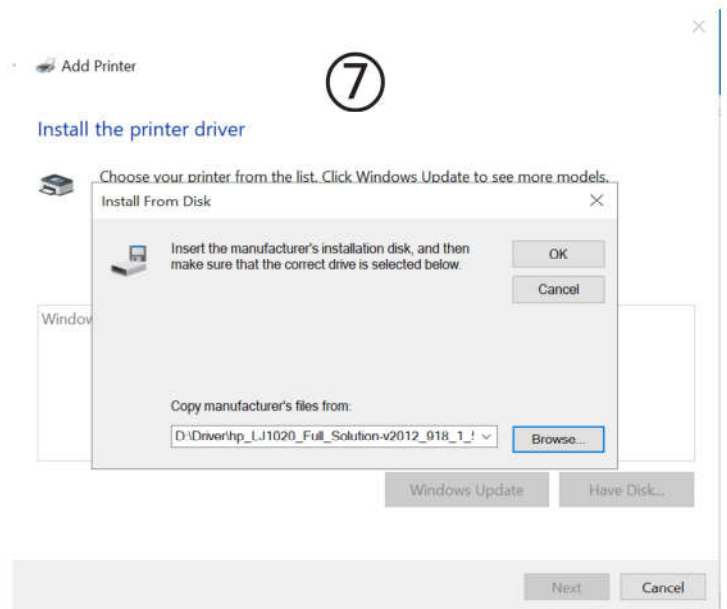
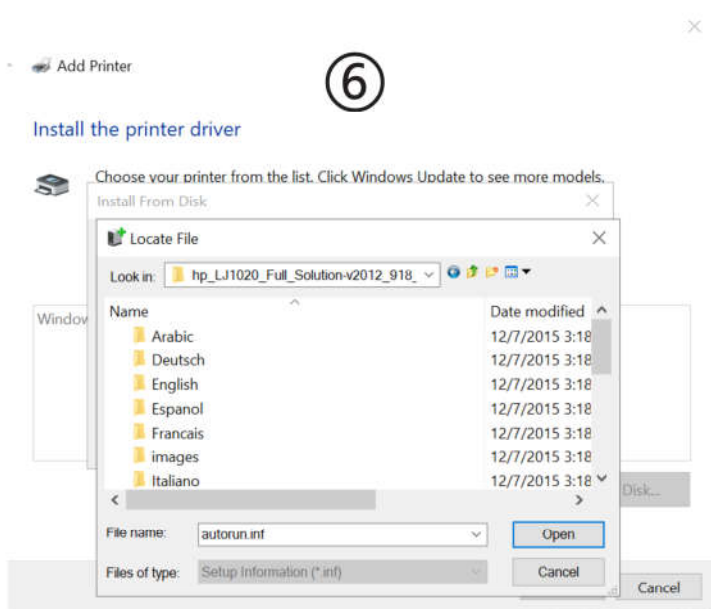
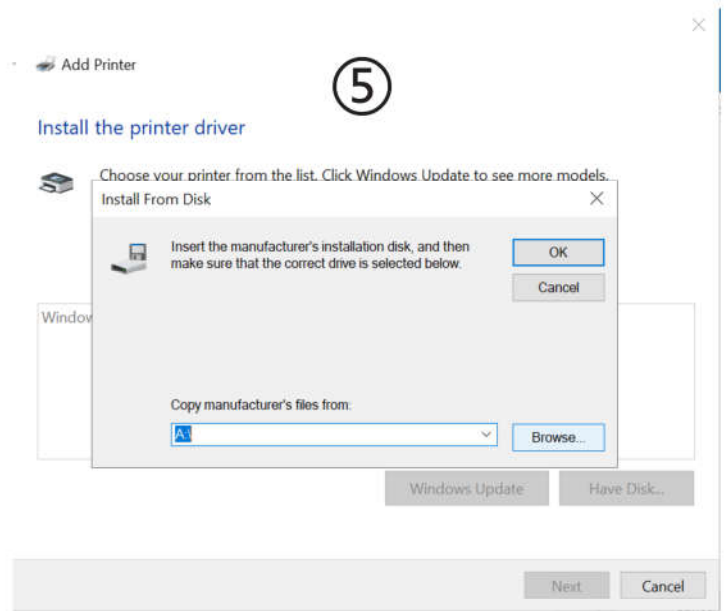
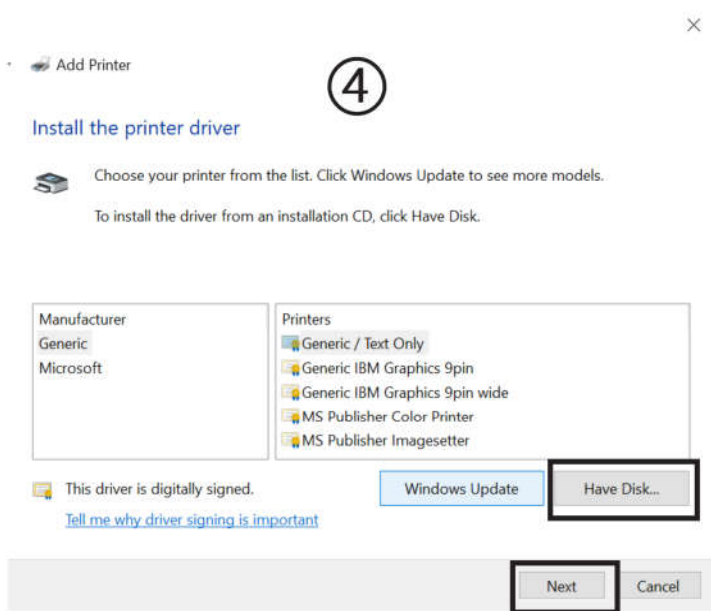
You've successfully added HP LaserJet 1020

To check if your printer is working properly, or to see troubleshooting information for the printer, print a test page.



2.10. If the computer lacks the printer driver, download and install the printer driver on the computer before adding the printer. Alternatively, unzip the printer's .exe format driver to obtain the .inf file for driver installation. The steps are as follows:

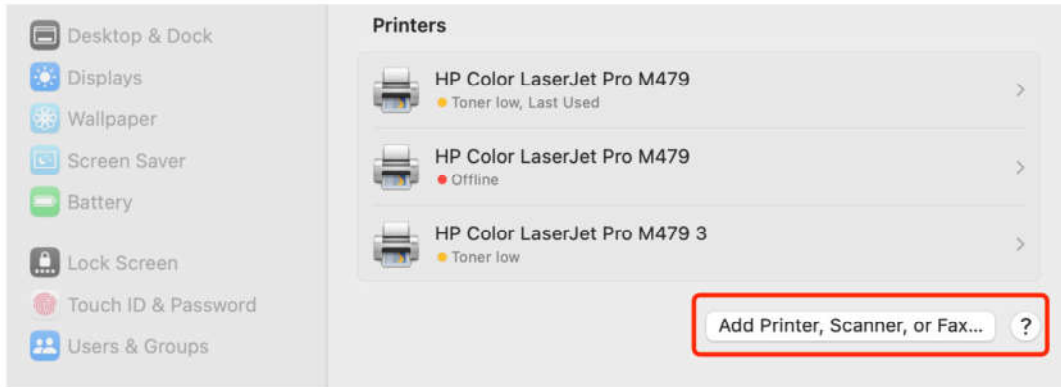




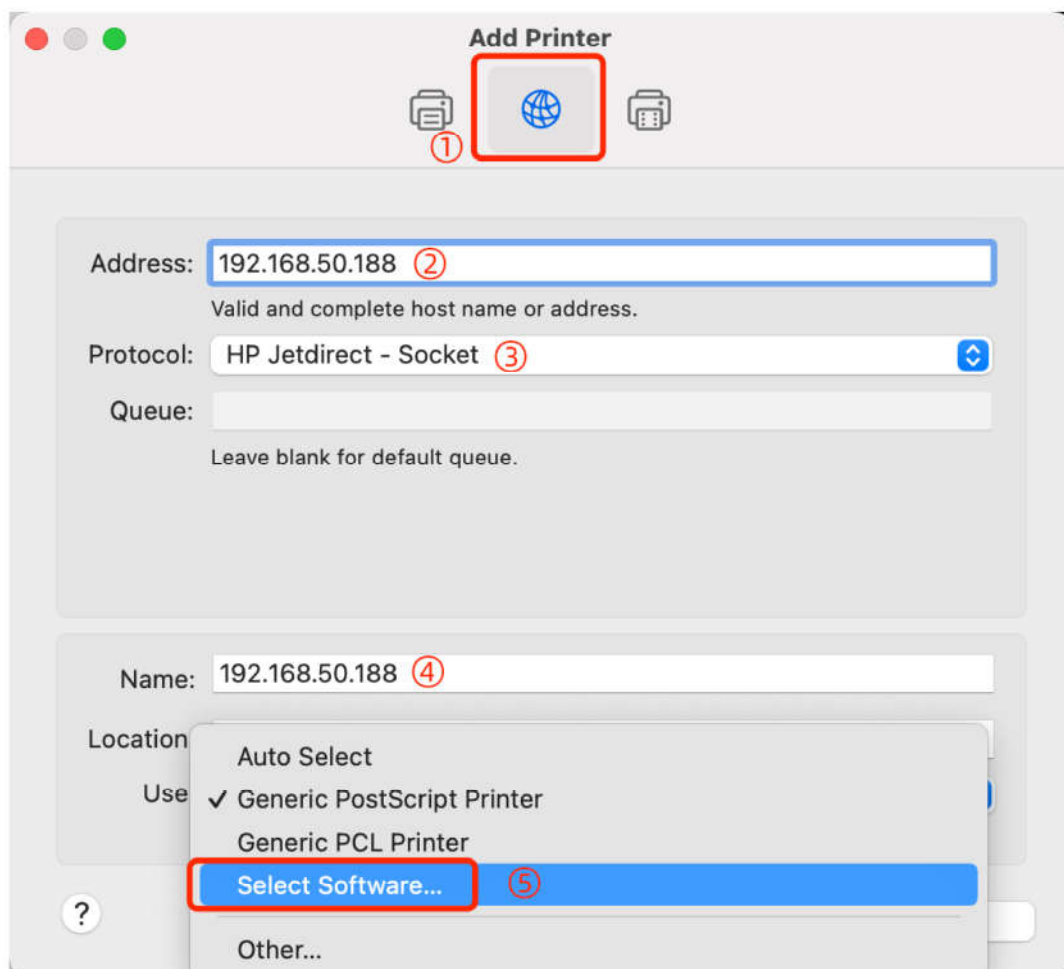
3.Add a printer to a macOS computer

3.1.It is necessary to confirm whether the printer has drivers compatible with the macOS system. If the printer lacks macOS system drivers, it cannot be added. Printer drivers can be downloaded and installed from the official website of the printer or from the Apple website.

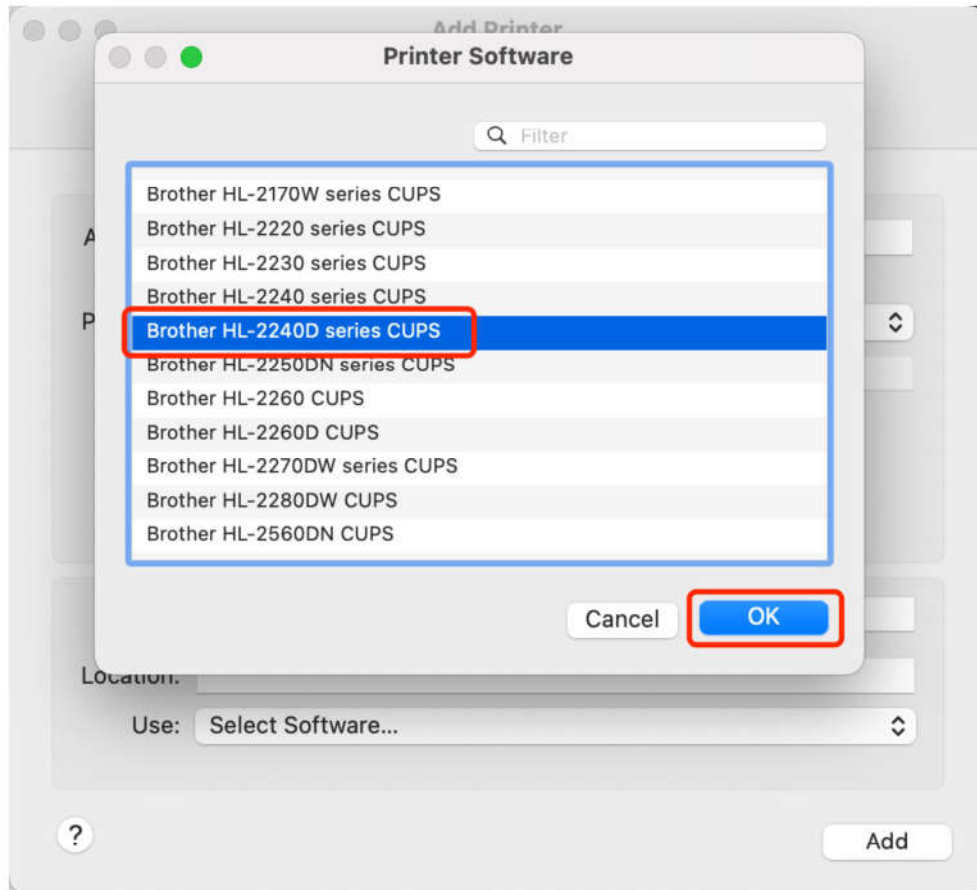
3.2.Open the "Printers & Scanners" settings in the System Preferences on your Mac and click the "Add Printer, Scanner, or Fax" button.



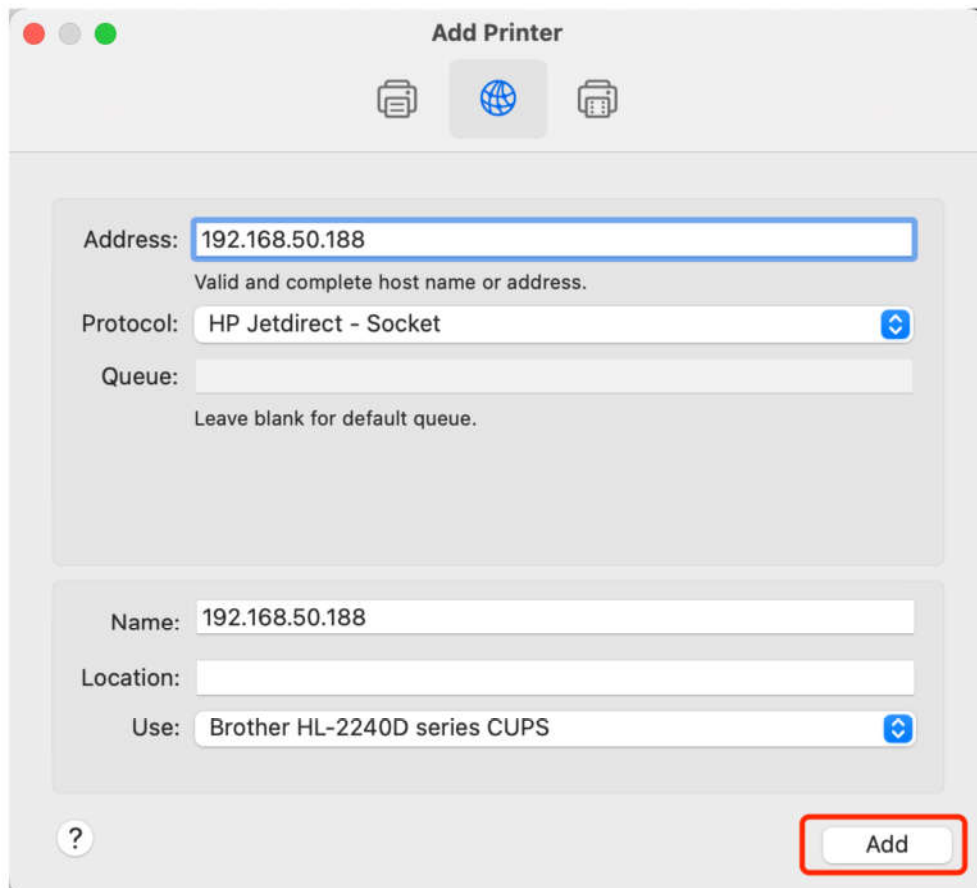
3.3.Select "Add IP Printer" option ① ,In the address field, enter the IP address obtained after the Quxas print server is connected to the network ② .Choose the protocol as "HP Jetdirect-Socket" ③ .You can customize the name ④ . Click on "Use" and then click on "Select Software" ⑤ .



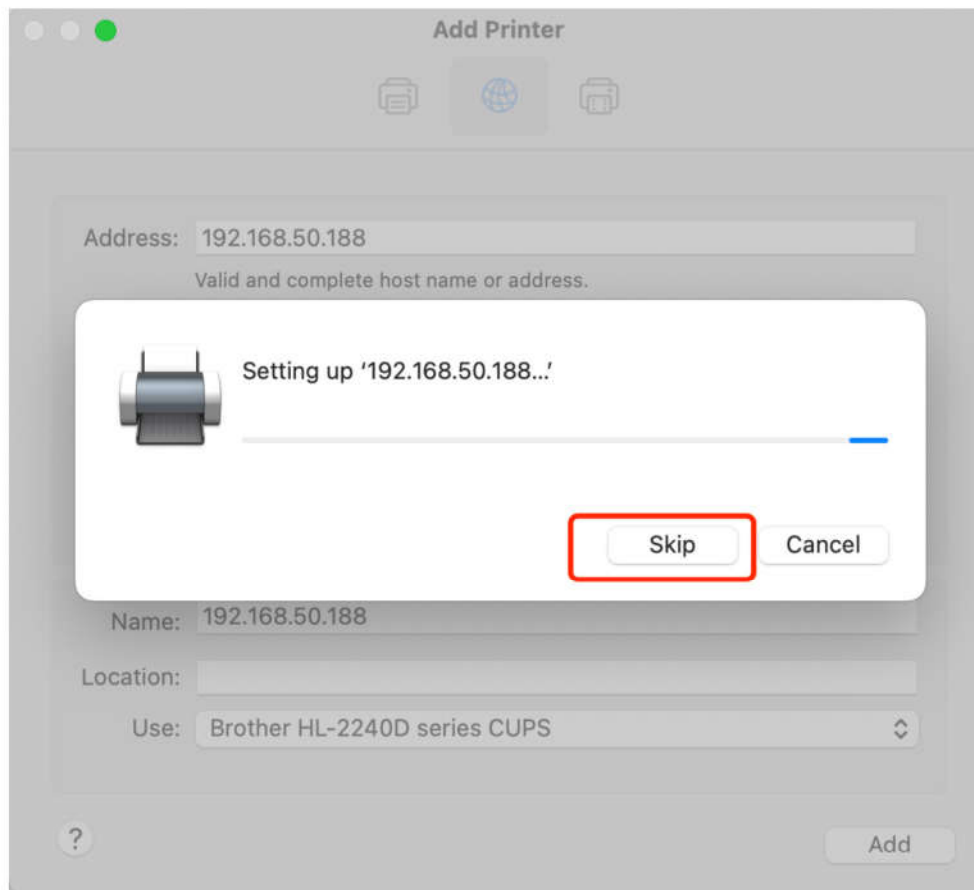
3.4. Select the printer model you want to install from the list, and then click the "OK" button.



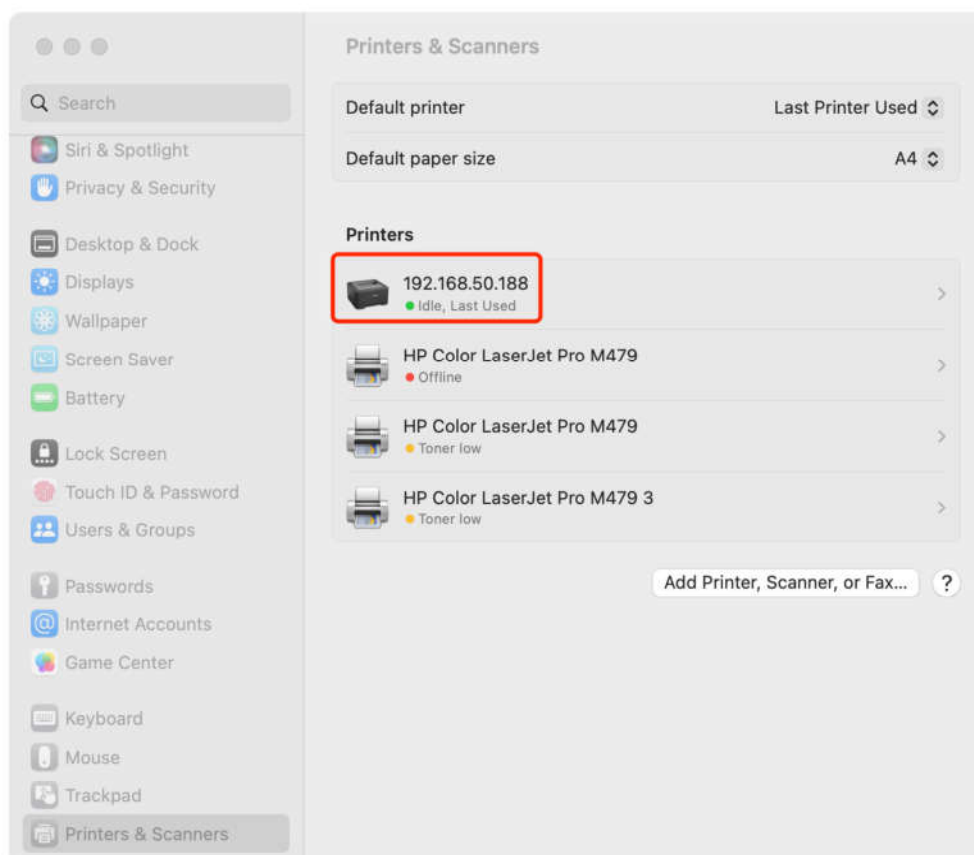
3.5. Click on "Add" again.



3.6. For configuration, simply click on the "Skip" button.



3.7. Printer added successfully, Printer addition is complete. When printing is needed, open the document, click print, select the newly added printer, then click print. The printing process is consistent with directly connecting the printer to the computer for printing.



FCC Caution:

This device complies with part 15 of the FCC Rules. Operation is subject to the following two conditions: (1) this device may not cause harmful interference, and (2) this device must accept any interference received, including interference that may cause undesired operation.

Any changes or modifications not expressly approved by the party responsible for compliance could void the user's authority to operate the equipment.

NOTE: This equipment has been tested and found to comply with the limits for a Class B digital device, pursuant to Part 15 of the FCC Rules. These limits are designed to provide reasonable protection against harmful interference in a residential installation. This equipment generates, uses and can radiate radio frequency energy and, if not installed and used in accordance with the instructions, may cause harmful interference to radio communications. However, there is no guarantee that interference will not occur in a particular installation.

If this equipment does cause harmful interference to radio or television reception, which can be determined by turning the equipment off and on, the user is encouraged to try to correct the interference by one or more of the following measures:

- Reorient or relocate the receiving antenna.
- Increase the separation between the equipment and receiver.
- Connect the equipment into an outlet on a circuit different from that to which the receiver is connected.
- Consult the dealer or an experienced radio/TV technician for help.

To maintain compliance with FCC's RF Exposure guidelines, This equipment should be installed and operated with minimum distance between 20cm the radiator your body: Use only the supplied antenna.