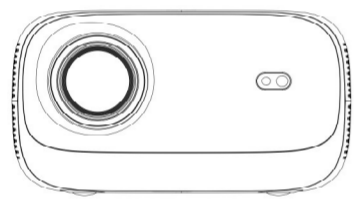


157g铜版纸

76x130mm

折页 分割线无需印刷



L009BQ User Manual

Safety Instructions

Read all instructions before you use this device. Do not make any changes or create settings that are not described in this manual. If physical damage, loss of data or damage is caused by failure to follow instructions, the warranty does not apply.

1. To reduce the risk of fire or electric shock, do not expose the device to rain or moisture. Objects filled with liquids, such as vases, should not be placed on this device.
2. Do not place this device on soft surfaces such as tablecloths or carpets, otherwise the device could be a fire hazard.
3. Do not place this device in areas susceptible to excessive dust and dirt or near any appliance generating a strong magnetic field.
4. To prevent overheating, do not block or clog the ventilation holes.
5. Never place this device in a confined space. Always leave enough space around this device for ventilation.
6. Protect this device from overexposure to direct sunlight, heat, large temperature fluctuations and moisture. Avoid extreme temperatures.
7. When this device is running for a long period of time, the surface may become hot. Shut it down immediately and unplug the charger. Resume operation after this device has cooled down.
8. Always handle this device with care. Avoid touching the lens. Do not allow children to handle the device without supervision.
9. Use attachments or accessories specified by the manufacturer only.
10. Avoid extreme vibration as it may damage the internal components.

FCC Statement

This equipment has been tested and found to comply with the limits for a Class B digital device, pursuant to part 15 of the FCC Rules. These limits are designed to provide reasonable protection against harmful interference in a residential installation. This equipment generates, uses and can radiate radio frequency energy and, if not installed and used in accordance with the instructions, may cause harmful interference to radio communications. However, there is no guarantee that interference will not occur in a particular installation. If this equipment does cause harmful interference to radio or television reception, which can be determined by turning the equipment off and on, the user is encouraged to try to correct the interference by one or more of the following measures:

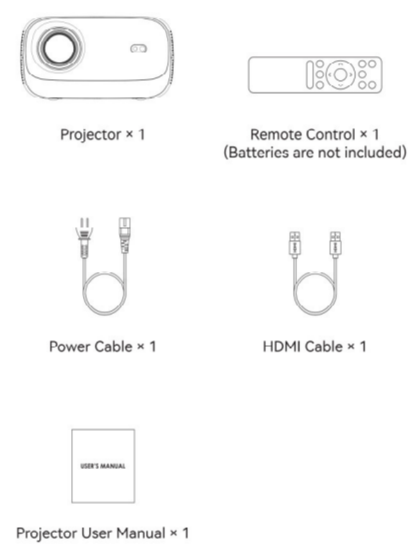
- Reorient or relocate the receiving antenna.
- Increase the separation between the equipment and receiver.
- Connect the equipment into an outlet on a circuit different from that to which the receiver is connected.
- Consult the dealer or an experienced radio/TV technician for help.

Caution: Any changes or modifications to this device not explicitly approved by manufacturer could void your authority to operate this equipment. This device complies with part 15 of the FCC Rules. Operation is subject to the following two conditions:

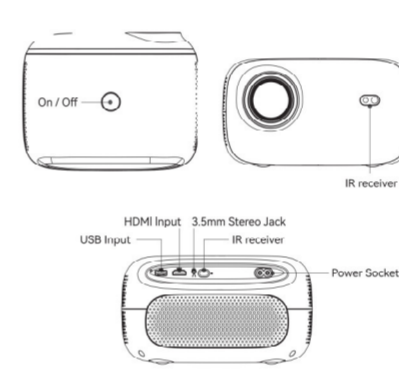
- (1) This device may not cause harmful interference, and
- (2) this device must accept any interference received, including interference that may cause undesired operation.

RF Exposure Information
This equipment complies with FCC radiation exposure limits set forth for an uncontrolled environment. This equipment should be installed and operated with minimum distance 20cm between the radiator and your body.

Package List



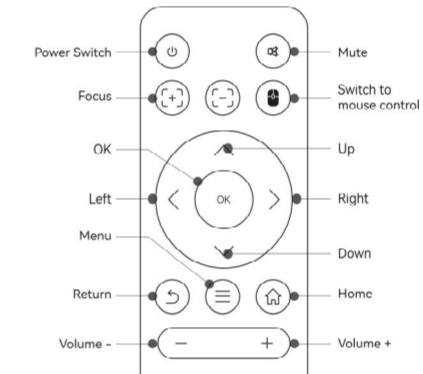
Overview



Tips:

- 1. Blurry Image**
Go to Settings - Display - Auto Keystone Correction - Turn on the Auto Keystone Correction or enter Manual Keystone to adjust the image. Press the focus button on remote control to get the best clarity.
- 2. Mounting Hole**
Adopting a single mounting hole dual-use design, the projector is compatible with the standard camera tripod and 1/4 inch screw projector tripod stand.

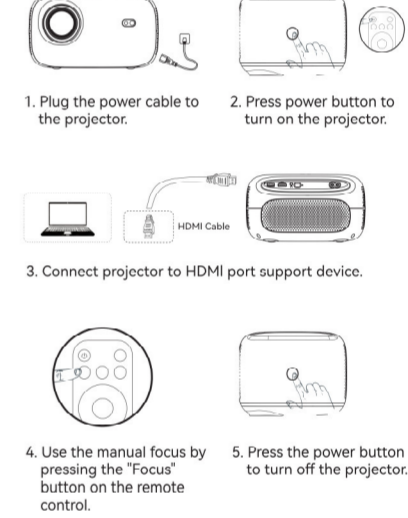
Remote Control



Attention:

1. Do not submerge the remote control in the water.
2. Do not put the remote control near fire or in wet or hot places.
3. Do not use old and new batteries together in the remote control.
4. Please take the batteries out if not using the remote control for a long time to avoid battery leakage.
5. Please point the remote control toward the IR receiver.
6. Please use the remote control within 6 meters distance and 30 degree angle.

Getting Started



Tips:
Make sure the projector is horizontal to the projector screen.

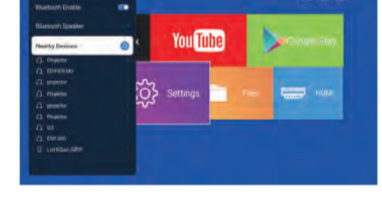
Network Setting

Settings - Network - Wifi Enable > Turn on Wifi Enable. Choose the network and type the password that you want to connect to.



Bluetooth Setting

Settings - Bluetooth- Bluetooth Enable > Select Refresh to search and pair the device that you want to connect to.



Projection Mode

Settings - Display - Projection Mode > Select different mode according to your application scenario. Four modes are available < Front Projection, Rear Front Projection, Front Ceiling Projection, Rear Ceiling Projection >.



Display Setting

Settings - Display > Set the brightness & color, keystone correction, initial angle correction, screen scaling, projection mode.



System Setting

Settings - System > Set the system information, language, input method, date & time, system upgrade and factory reset.



Screen Scaling

Settings - Display - Screen Scaling > Support to adjust the aspect ratio according to your application scenario.



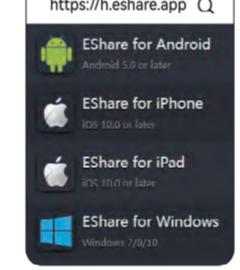
File Management

Insert the U disk, click the File icon on the homepage. The content of U disk could be read, such as video, audio, picture, etc.



How to download screen mirroring App

Please visit <https://h.eshare.com> only to download. Follow tips on the screen to install it.



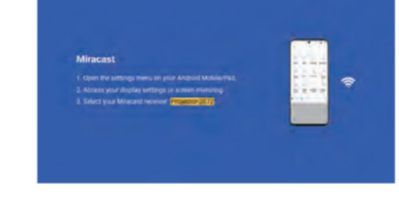
Eshare Mirroring

Make sure your device and projector are connected with same network. Open the Eshare app, and click the Eshare name.



Miracast Mirroring

Make sure your Android device and the projector are connected with same network. Open the settings menu and access your display settings or screen mirroring. Select the searched projector for the wireless screen transfer function.



Airplay mirroring

Make sure your phone and the projector are connected with same network. Open settings menu and click Screen Mirroring. Select the searched projector for the wireless screen transfer function.



HDMI

Homepage - HDMI > Enter the HDMI signal source to display the video.

