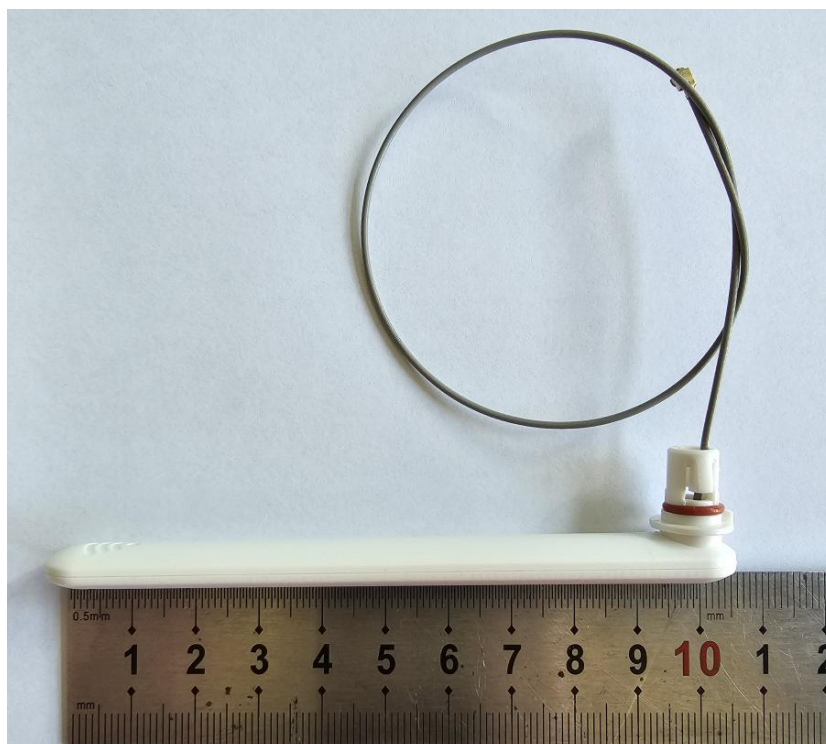


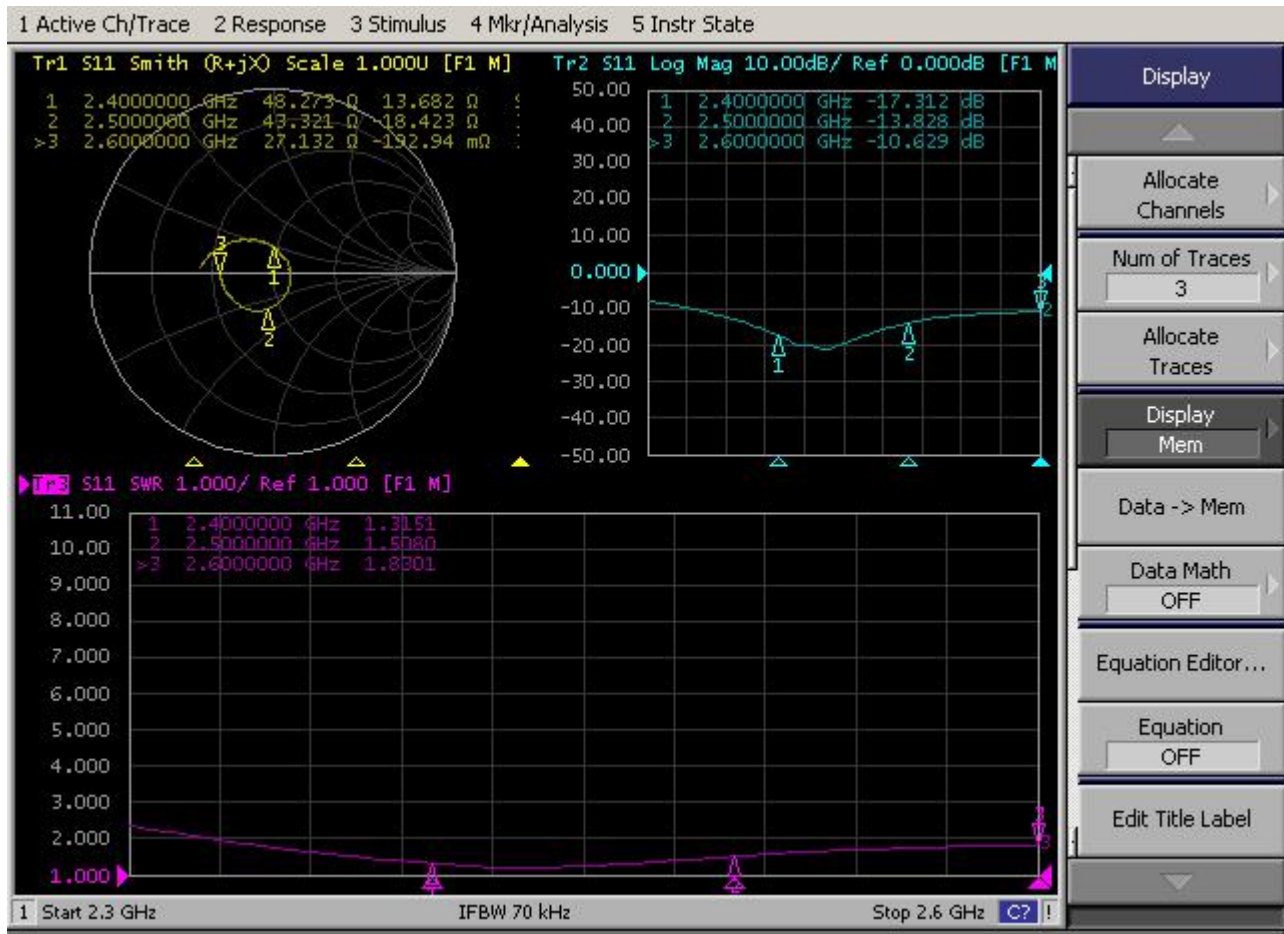
一、product picture

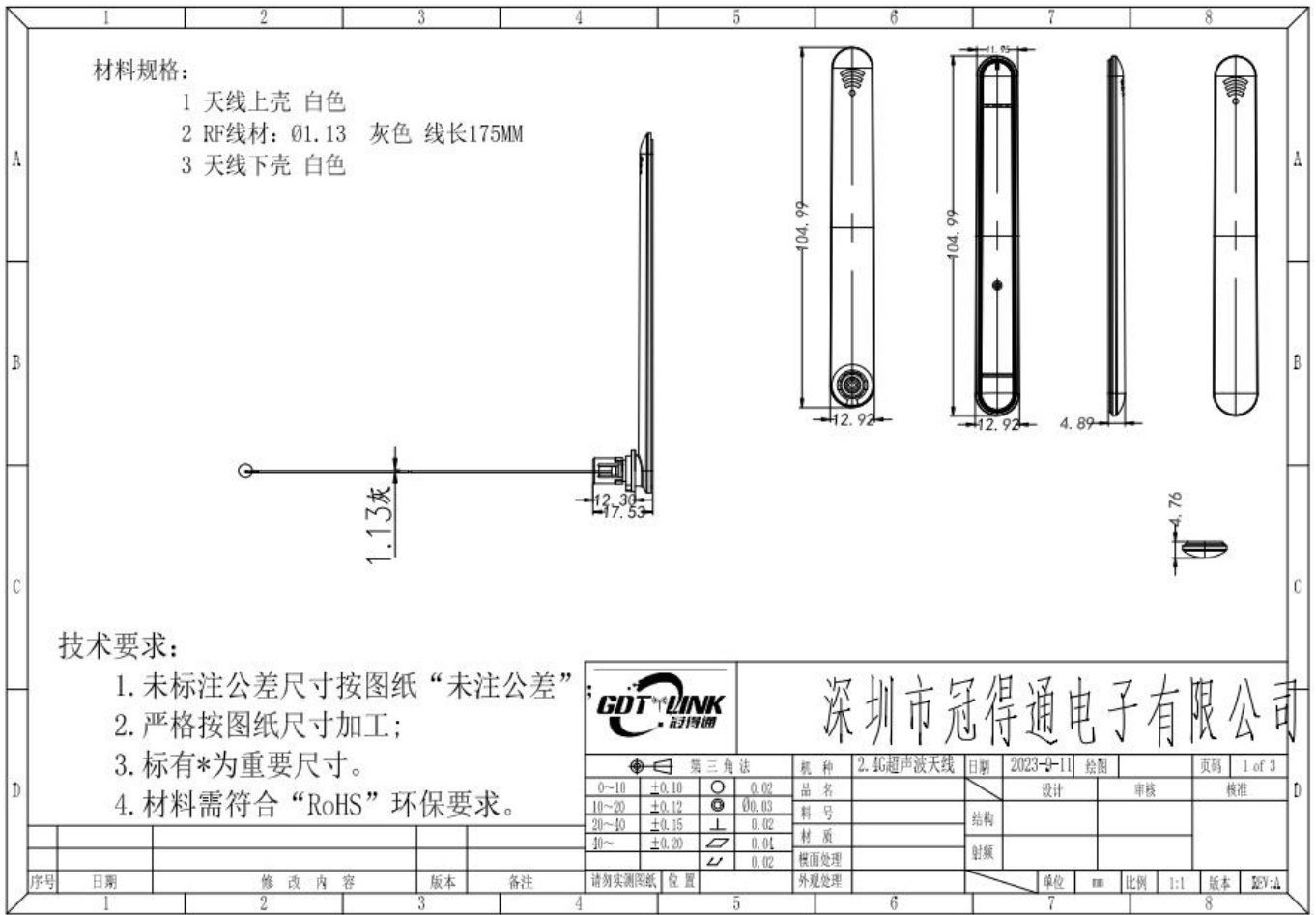


二、Product Parameter

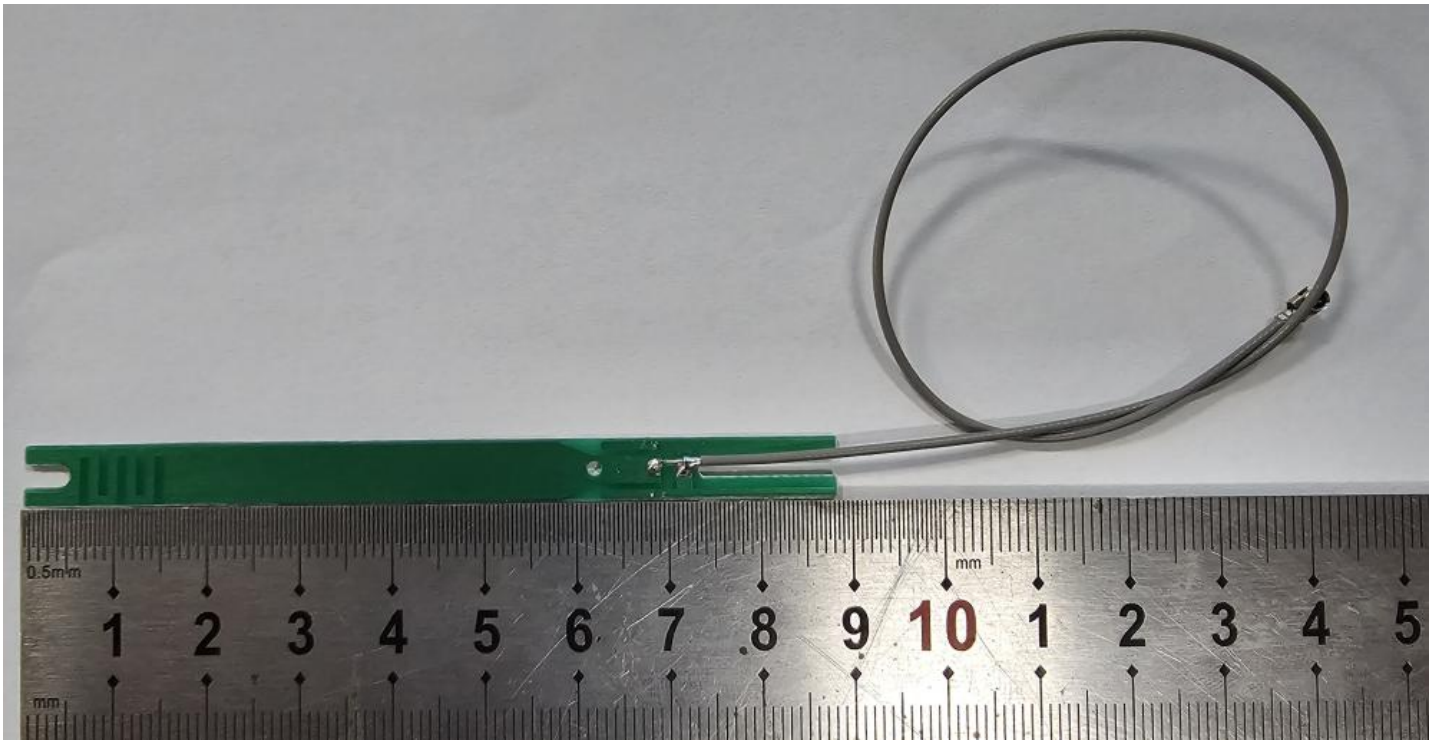
Product test parameters			
产品名称(Name)	2.4G antenna	产品型号(Model Type)	
电性能指标 (Electrical Specifications)			
频率范围 (Frequency Range)	2400MHz-2500MHz	极化方式 (Polarization)	vertical
输入阻抗(Impedance)	50 Ω	Direction of radiation	omnidirectional
驻波比 (VSWR)	≤ 2.0	功率容量(Power)	50W
增益(Gain)	3dBi	带宽 (Bandwidth)	100MHz
机械指标 (Mechanical Specifications)			
尺寸 (Dimensions)	104.99*11.95-+0.3mm	外壳颜色(Radome Color)	white
连接器型号 (Connector)	IPEX 一代	引线长度(Cable Length)	175-+3mm
外壳材料 Radome Material	ABS		
工作温度 (Working Temperature)	-40 $^{\circ}$ C-+85 $^{\circ}$ C	存放温度 (Limit Temperature)	-40 $^{\circ}$ C-+85 $^{\circ}$ C

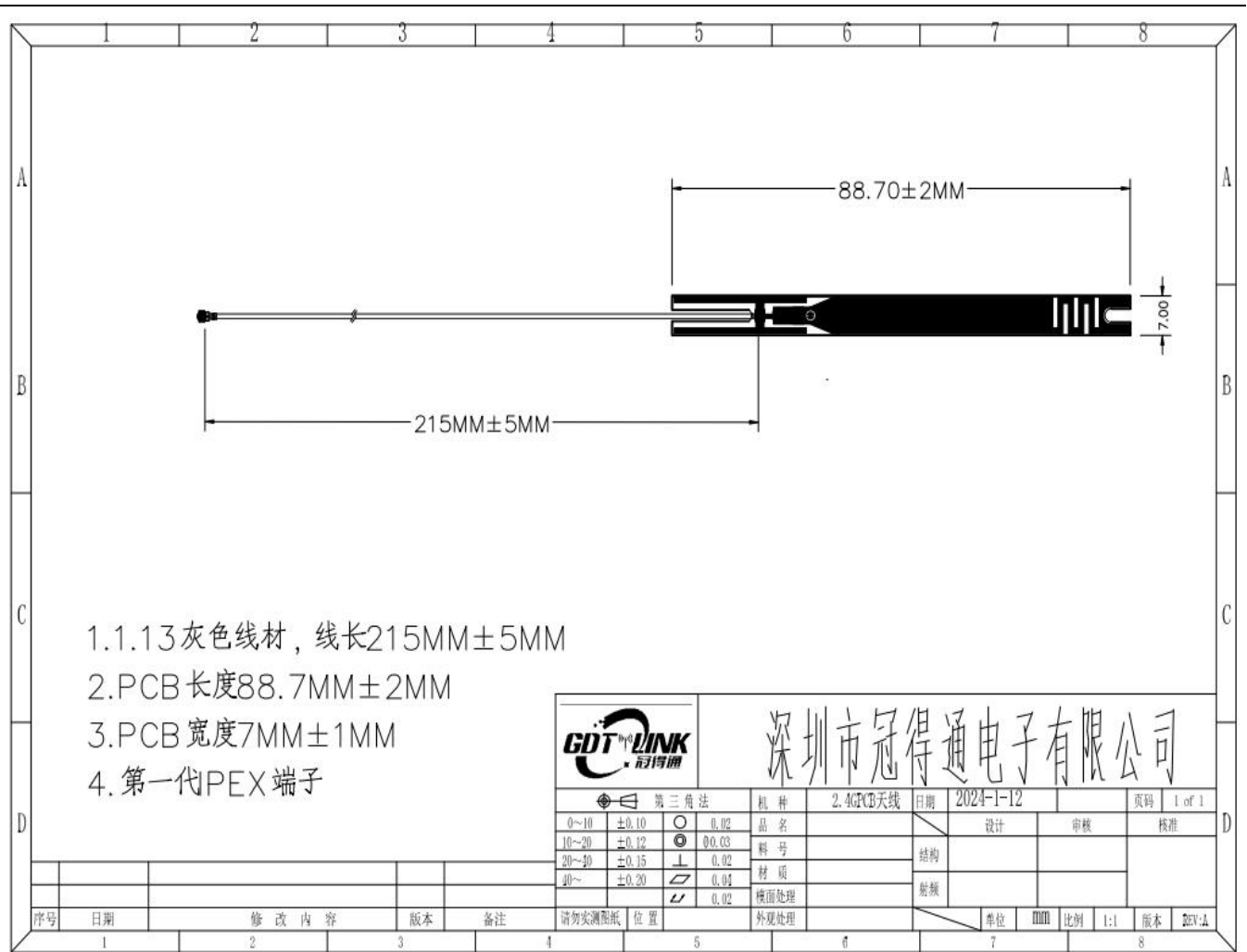
三、VSWR、Return loss、Smith





四、Pictures and drawings of antenna internal structure





五、Antenna gain and efficiency

Test Point ID	Freq. (MHz)	TRP (dBm)	Gain (dBi)	Directivity (dBi)	Efficiency (%)
<u>1</u>	2400.0	2400.00	2.34	5.51	56.0%
<u>2</u>	2410.0	2410.00	2.55	5.82	54.0%
<u>3</u>	2420.0	2420.00	2.54	6.12	53.9%
<u>4</u>	2430.0	2430.00	3.08	6.30	60.6%
<u>5</u>	2440.0	2440.00	3.15	6.27	58.7%
<u>6</u>	2450.0	2450.00	3.23	6.34	57.1%
<u>7</u>	2460.0	2460.00	2.15	6.41	52.2%
<u>8</u>	2470.0	2470.00	2.96	6.29	52.1%
<u>9</u>	2480.0	2480.00	2.72	6.00	51.9%
<u>10</u>	2490.0	2490.00	2.64	6.05	49.7%
<u>11</u>	2500.0	2500.00	2.63	6.02	47.3%

