

项目简介

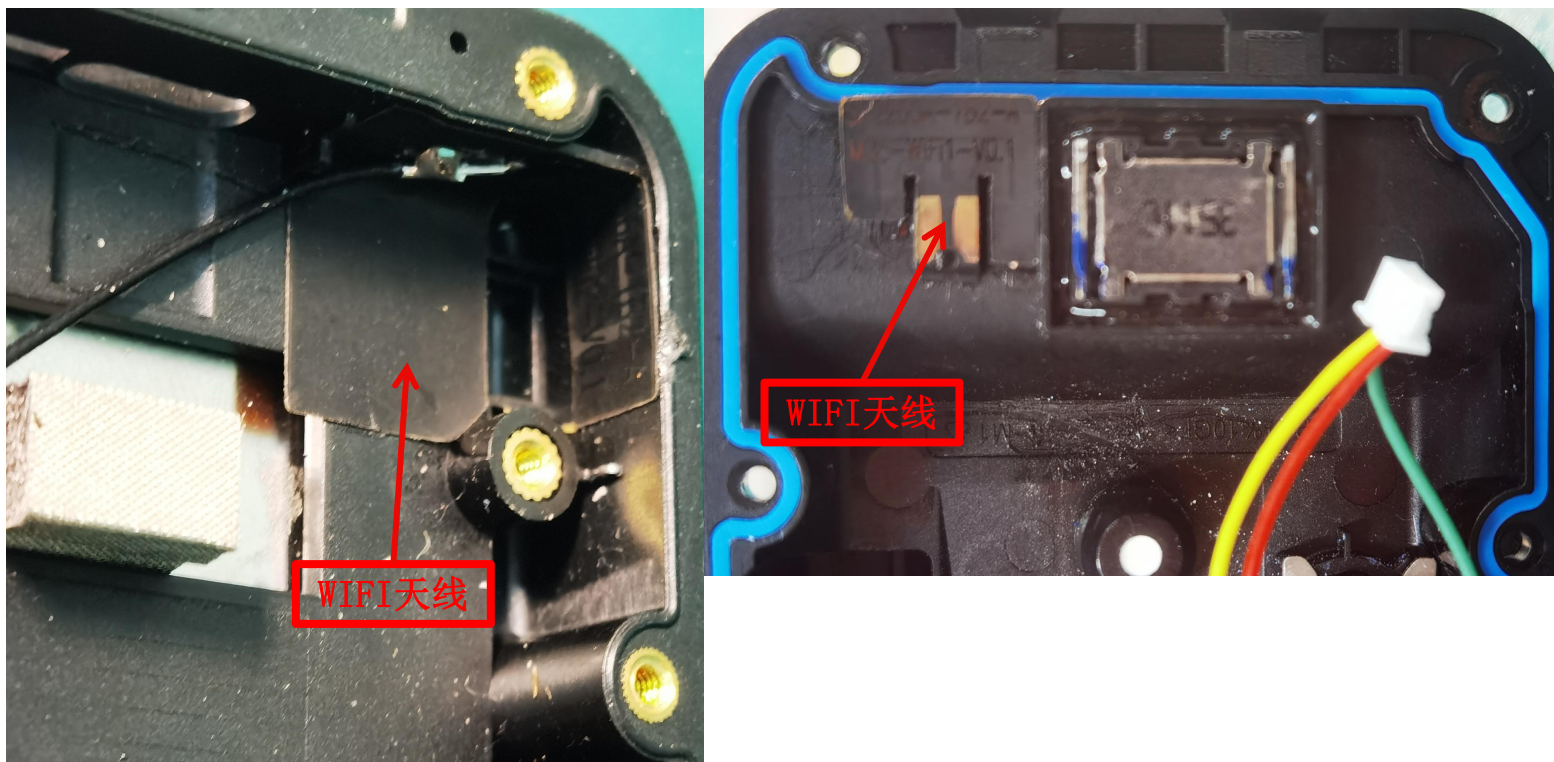
1. 项目简述

项目天线数目	机子类型
3	摩托车记录仪
整机外壳材质：塑胶壳私模	

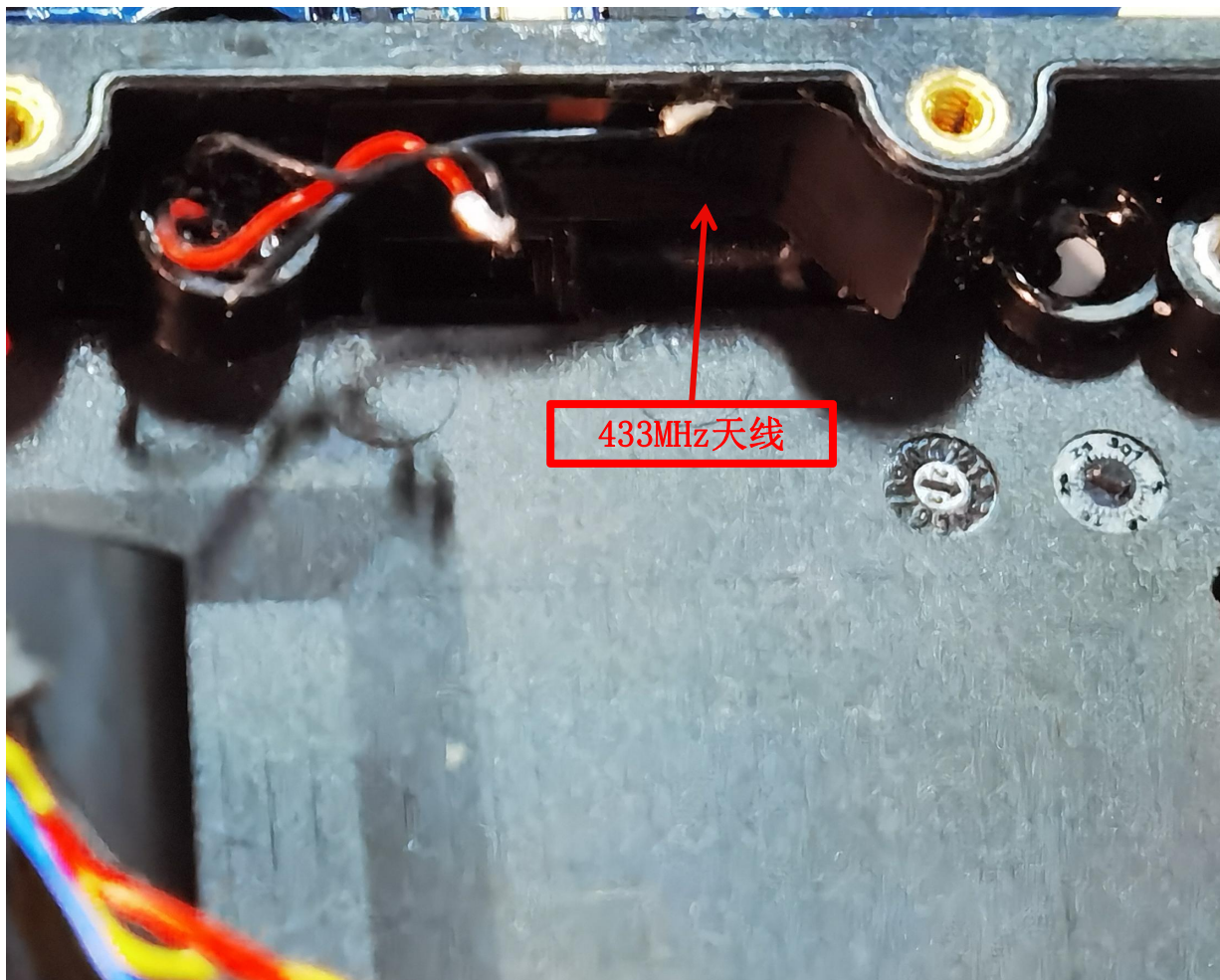
2. 天线简述

天线编号	名称	工作频段/MHZ	材质/结构
1	WIFI&5Gwifi	2400-2500MHZ/5180-5880MHZ	FPC
2	WIFI&5Gwifi	2400-2500MHZ/5180-5880MHZ	FPC

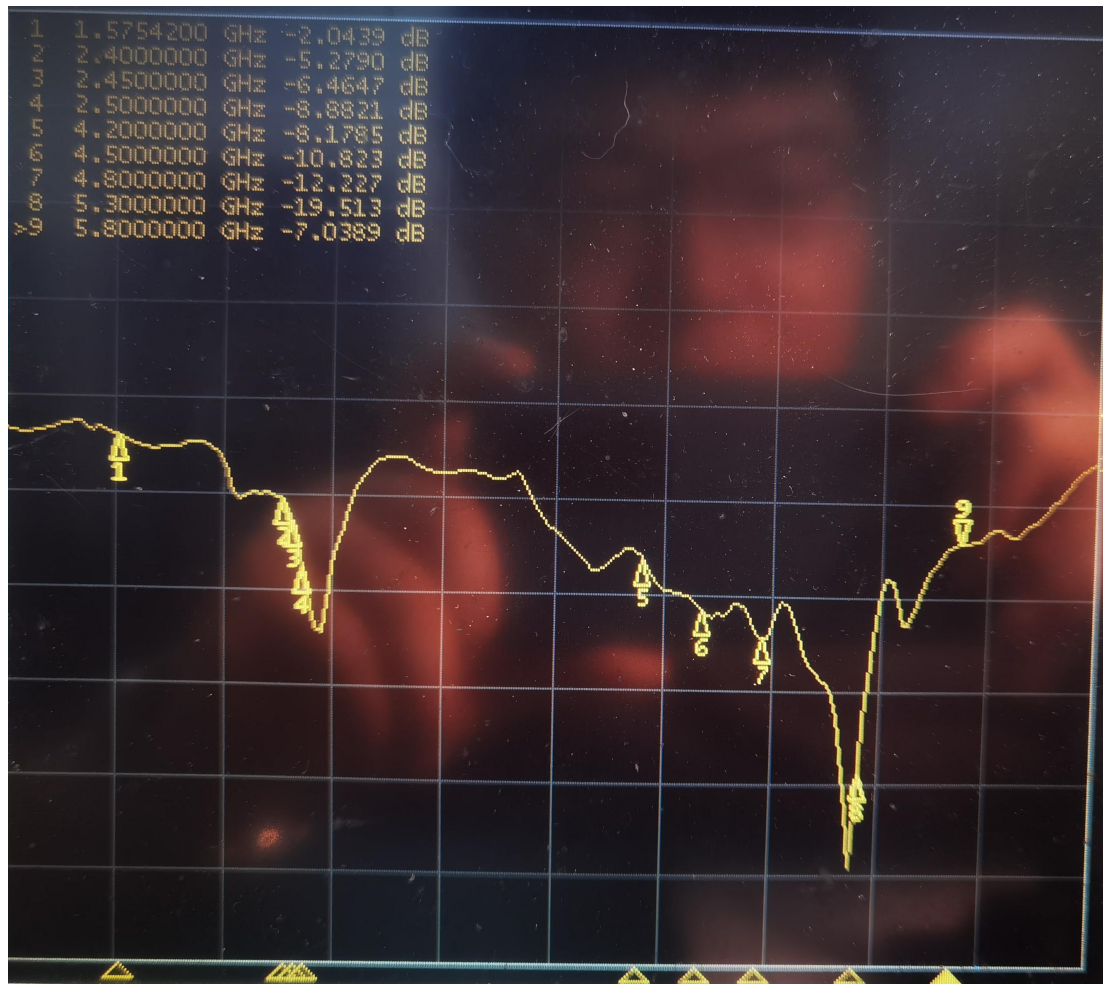
天线布局



天线布局



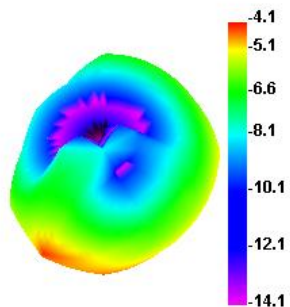
WIFI天线 (弹脚接触式) S11



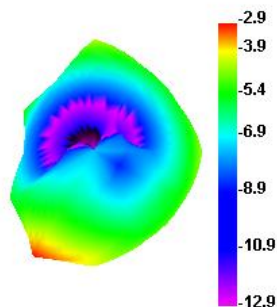
WIFI (弹脚接触式) 效率

Passive Test For 2.4G												
Freq (MHz)	Effi (%)	Effi (dB)	Gain (dBi)	Gain (dBd)	UHS (%)	DHIS (%)	Max (dB)	Min (dB)	Directivity (dBi)	Beamwidth (3dB)	AttH (dB)	AttV (dB)
2400	18.15	-7.41	-4.09	-6.24	7.223	10.922	-4.09	-16.8	3.32	60	46.77	47.04
2410	18.4	-7.35	-4	-6.15	7.258	11.142	-4	-17.86	3.35	60	46.94	47.16
2420	21.5	-6.68	-3.3	-5.45	8.41	13.091	-3.3	-17.2	3.38	0	47.02	47.39
2430	24.05	-6.19	-2.63	-4.78	9.429	14.625	-2.63	-16.01	3.56	0	47.31	47.67
2440	22.36	-6.51	-2.9	-5.05	8.81	13.548	-2.9	-14.71	3.6	0	47.68	47.91
2450	21.51	-6.67	-2.9	-5.05	8.584	12.928	-2.9	-15.1	3.77	0	47.98	48.27
2460	22.14	-6.55	-2.92	-5.07	8.896	13.245	-2.92	-15.09	3.63	60	47.79	48.02
2470	23.08	-6.37	-2.81	-4.96	9.457	13.625	-2.81	-15.27	3.56	60	47.6	47.7
2480	25.71	-5.9	-2.73	-4.88	10.653	15.055	-2.73	-14.25	3.16	30	47.93	48.05
2490	28.37	-5.47	-2.15	-4.3	11.824	16.543	-2.15	-13.32	3.32	30	48.1	47.95
2500	30.25	-5.19	-1.89	-4.04	12.613	17.634	-1.89	-12.66	3.3	30	48.13	48.09

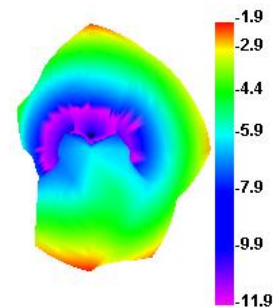
2400.000MHz



2450.000MHz



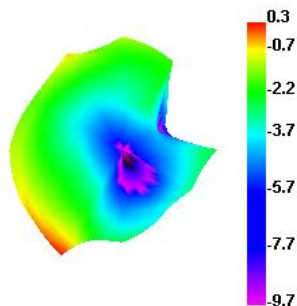
2500.000MHz



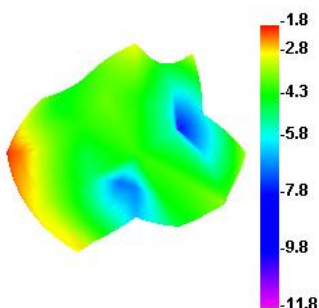
WIFI (弹脚接触式) 效率

Passive Test For 5G-WIFI												
Freq (MHz)	Effi (%)	Effi (dB)	Gain (dBi)	Gain (dBd)	UHS (%)	DHIS (%)	Max (dB)	Min (dB)	Directivity (dBi)	Beamwidth (3dB)	AttH (dB)	AttV (dB)
5000	31.22	-5.06	0.33	-1.82	18.19	13.028	0.33	-16.67	5.39	60	57.34	57.35
5100	35.39	-4.51	0.37	-1.78	21.558	13.836	0.37	-23.32	4.88	30	57.81	57.76
5200	42.03	-3.76	0.78	-1.37	25.245	16.782	0.78	-14.39	4.55	30	56.99	56.81
5300	41.27	-3.84	0.58	-1.57	24.823	16.444	0.58	-20.13	4.43	30	56.76	56.86
5400	32.36	-4.9	-0.27	-2.42	21.108	11.252	-0.27	-20.01	4.63	30	56.69	56.95
5500	21.33	-6.71	-1.76	-3.91	13.305	8.021	-1.76	-18.38	4.95	30	57.35	58.31
5600	27.55	-5.6	-0.81	-2.96	13.451	14.104	-0.81	-18.9	4.79	0	58.6	59.56
5700	29.35	-5.32	-0.27	-2.42	14.43	14.921	-0.27	-17.95	5.05	0	59.11	59.81
5800	32.31	-4.91	0.02	-2.13	17.725	14.586	0.02	-21.29	4.93	30	59.62	60.26
5900	28.69	-5.42	-1.52	-3.67	16.674	12.015	-1.52	-14.51	3.9	60	60.04	61.12

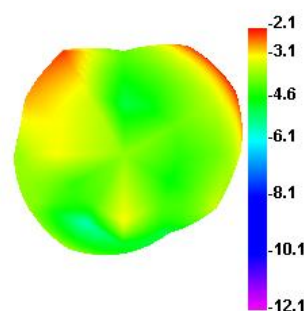
5000.000MHz



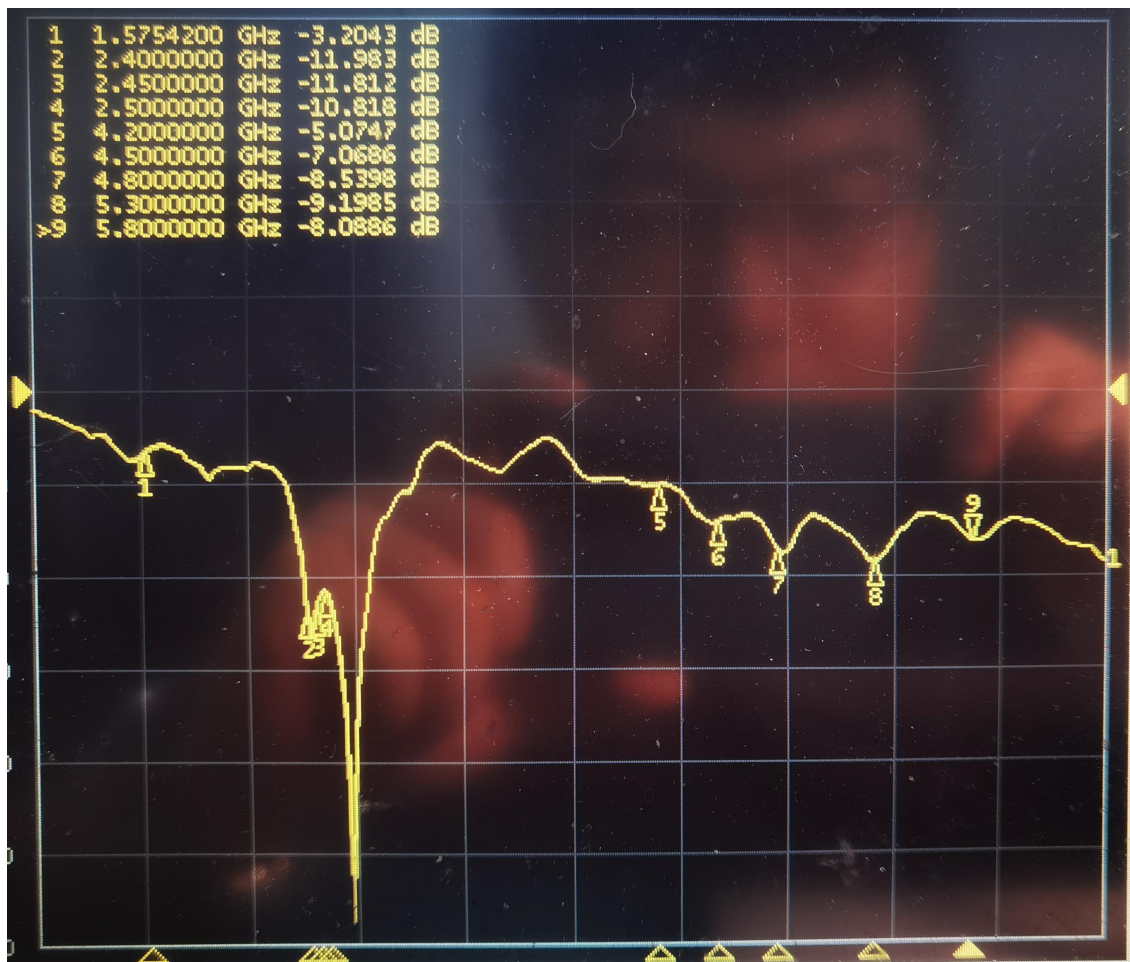
5500.000MHz



6000.000MHz



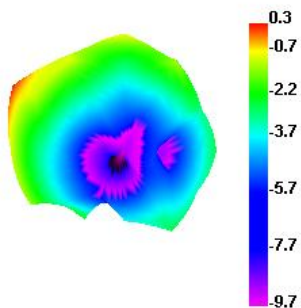
WIFI天线（同轴线式）S11



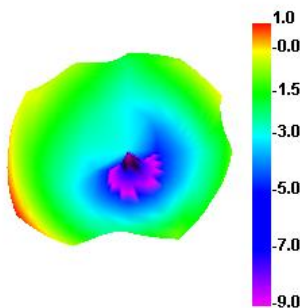
WIFI (同轴线式) 效率

Passive Test For 2.4G												
Freq (MHz)	Effi (%)	Effi (dB)	Gain (dBi)	Gain (dBd)	UHS (%)	DHIS (%)	Max (dB)	Min (dB)	Directivity (dBi)	Beamwidth (3dB)	AttH (dB)	AttV (dB)
2400	35.51	-4.5	0.33	-1.82	17.301	18.21	0.33	-13.43	4.82	30	46.77	47.04
2410	35.22	-4.53	-0.25	-2.4	17.49	17.727	-0.25	-12.31	4.29	30	46.94	47.16
2420	37.88	-4.22	-0.39	-2.54	19.22	18.663	-0.39	-12.31	3.83	60	47.02	47.39
2430	39.28	-4.06	-0.07	-2.22	20.38	18.898	-0.07	-12.69	3.99	30	47.31	47.67
2440	45.18	-3.45	0.65	-1.5	23.875	21.303	0.65	-11.94	4.1	30	47.68	47.91
2450	49.68	-3.04	0.95	-1.2	26.728	22.948	0.95	-11.89	3.99	30	47.98	48.27
2460	51.16	-2.91	0.94	-1.21	27.862	23.302	0.94	-14.44	3.85	30	47.79	48.02
2470	49.04	-3.09	0.52	-1.63	26.986	22.056	0.52	-16.44	3.62	30	47.6	47.7
2480	48.28	-3.16	0.75	-1.4	26.503	21.779	0.75	-18.07	3.91	30	47.93	48.05
2490	48.18	-3.17	0.96	-1.19	26.317	21.861	0.96	-19.23	4.13	30	48.1	47.95
2500	49.62	-3.04	1.09	-1.06	26.776	22.841	1.09	-18.66	4.13	30	48.13	48.09

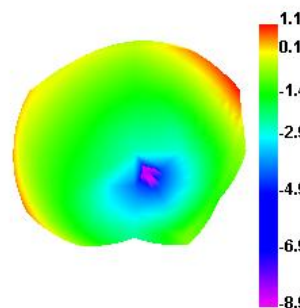
2400.000MHz



2450.000MHz



2500.000MHz

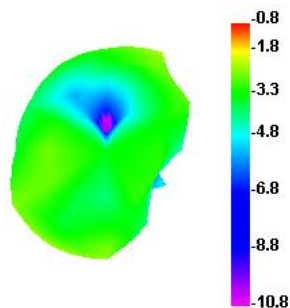


WIFI (同轴线式) 效率

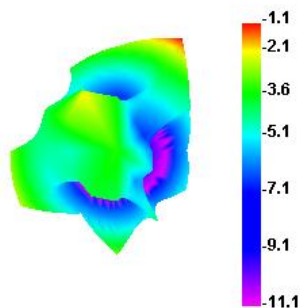
Passive Test For 5G-WIFI

Freq (MHz)	Effi (%)	Effi (dB)	Gain (dBi)	Gain (dBd)	UHIS (%)	DHIS (%)	Max (dB)	Min (dB)	Directivity (dBi)	Beamwidth (3dB)	AttH (dB)	AttV (dB)
5000	25.1	-6	-0.81	-2.96	13.697	11.406	-0.81	-18.02	5.19	0	57.34	57.35
5100	25.21	-5.98	-3.02	-5.17	15.354	9.852	-3.02	-15.62	2.96	180	57.81	57.76
5200	38.49	-4.15	-0.12	-2.27	23.338	15.151	-0.12	-14.41	4.03	60	56.99	56.81
5300	41.65	-3.8	0.66	-1.49	22.02	19.63	0.66	-8.98	4.47	0	56.76	56.86
5400	33.64	-4.73	0.11	-2.04	15.227	18.411	0.11	-12.34	4.84	0	56.69	56.95
5500	29.02	-5.37	-1.15	-3.3	13.401	15.618	-1.15	-13.21	4.23	60	57.35	58.31
5600	21.54	-6.67	-1.91	-4.06	11.113	10.423	-1.91	-16.97	4.76	0	58.6	59.56
5700	28.93	-5.39	-0.85	-3	17.496	11.436	-0.85	-14.15	4.53	0	59.11	59.81
5800	27.53	-5.6	-1.47	-3.62	16.315	11.211	-1.47	-15.15	4.13	30	59.62	60.26
5900	25.95	-5.86	-2.62	-4.77	13.128	12.824	-2.62	-16.84	3.23	30	60.04	61.12
6000	38.14	-4.19	-0.87	-3.02	18.455	19.686	-0.87	-13.65	3.31	0	61.72	62.72

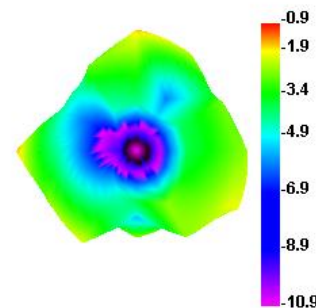
5000.000MHz



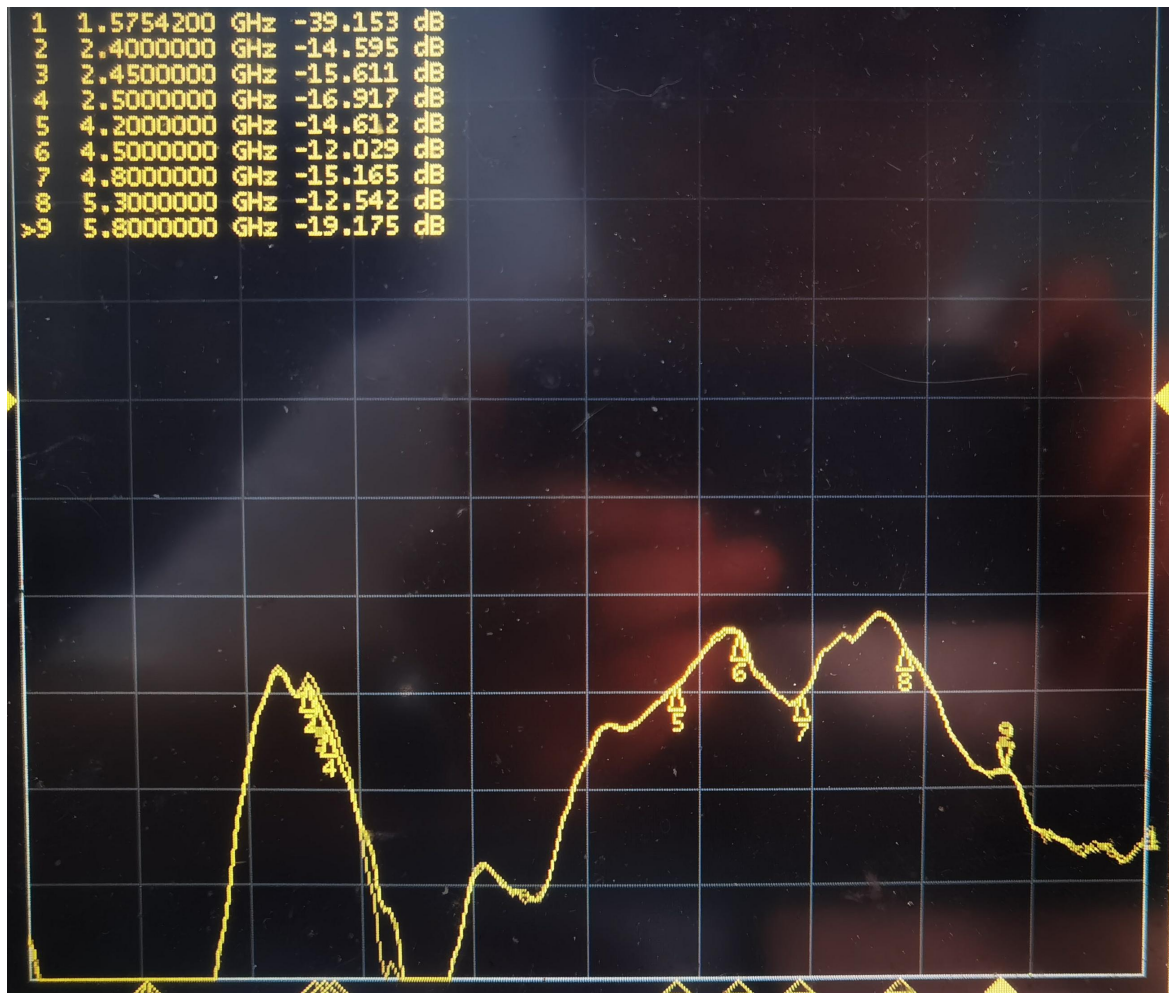
5500.000MHz



6000.000MHz



两wifi天线间隔离度



深圳市宝安区前进二路135号河西航城工业区B栋6楼

Building B, Hexi Hangcheng Industrial Zone, No. 135 Qianjin No. 2 Road, Baoan District, Shenzhen