

FCC Statement

This device complies with part 15 of the FCC Rules. Operation is subject to the following two conditions: (1) This device may not cause harmful interference, and (2) this device must accept any interference received, including interference that may cause undesired operation.

Note: This equipment has been tested and found to comply with the limits for a Class B digital device, pursuant to part 15 of the FCC Rules. These limits are designed to provide reasonable protection against harmful interference in a residential installation. This equipment generates, uses and can radiate radio frequency energy and, if not installed and used in accordance with the instructions, may cause harmful interference to radio communications. However, there is no guarantee that interference will not occur in a particular installation. If this equipment does cause harmful interference to radio or television reception, which can be determined by turning the equipment off and on, the user is encouraged to try to correct the interference by one or more of the following measures:

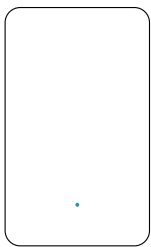
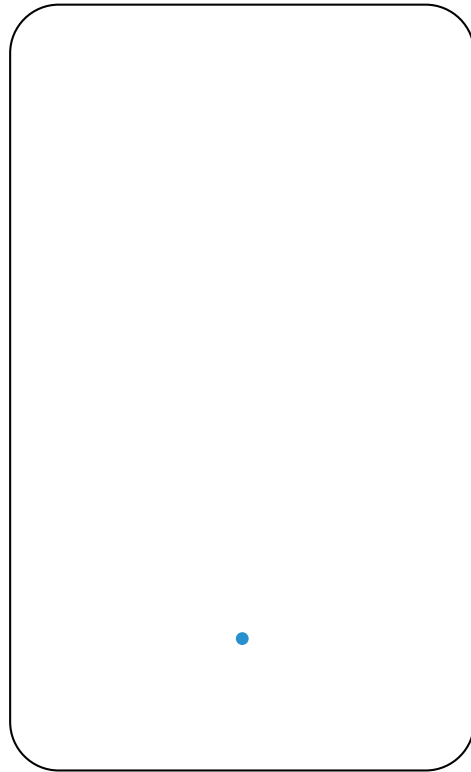
- Reorient or relocate the receiving antenna.
- Increase the separation between the equipment and receiver.
- Connect the equipment into an outlet on a circuit different from that to which the receiver is connected.
- Consult the dealer or an experienced radio/TV technician for help.

Note: The Grantee is not responsible for any changes or modifications not expressly approved by the party responsible for compliance. such modifications could void the user's authority to operate the equipment.

The device has been evaluated to meet general RF exposure requirement.

To maintain compliance with FCC's RF exposure guidelines, the distance must be at least 20 cm between the radiator and your body, and fully supported by the operating and installation configurations of the transmitter and its antenna(s).

User Guide



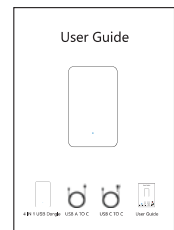
4 IN 1 USB Dongle



USB A TO C



USB C TO C



User Guide

Product Introduction

The 4 IN 1 USB Dongle is designed to seamlessly convert the original wired Carplay to wireless Carplay and wireless Android Auto. Having CarPlay in your vehicle enables you to link your Phone/Android phone and effortlessly interact with it through the car's integrated display and controls, or through Siri control.

Users can effortlessly and securely make phone calls, enjoy music, send and receive messages, access navigation, cast their cell phone screen, and much more.

Product Features

1. Enjoy the convenience of wireless CarPlay connectivity with our support for wired-to-wireless connection. Simply connect your phone and go!
2. Choose between wired and wireless Android Auto connections to suit your preferences and needs.
3. Cast your screen with ease using AirPlay support.
4. MirrorCast screen casting is also supported, giving you even more options for sharing your device's display.

Conditions of use

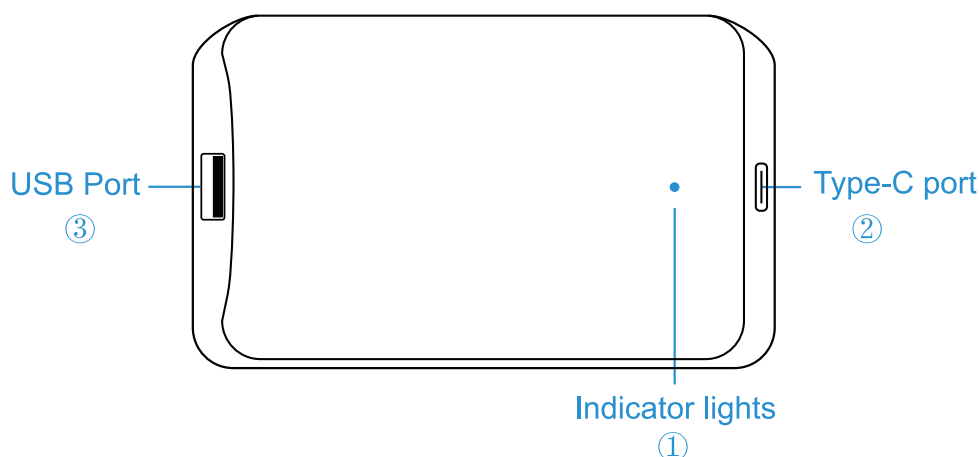
The 4 IN 1 USB Dongle is specifically designed to work with wired car hosts manufactured after 2016, and is compatible with iOS 10+ and Android 11+ for wireless phone connections.

Tip: In the event that the product cannot be paired with your car, please don't hesitate to contact us with your car model for further assistance.

Packing List

1. 4 IN 1 USB Dongle
2. USB A to C cable
3. USB C to C cable
4. Instruction manual

Product Show

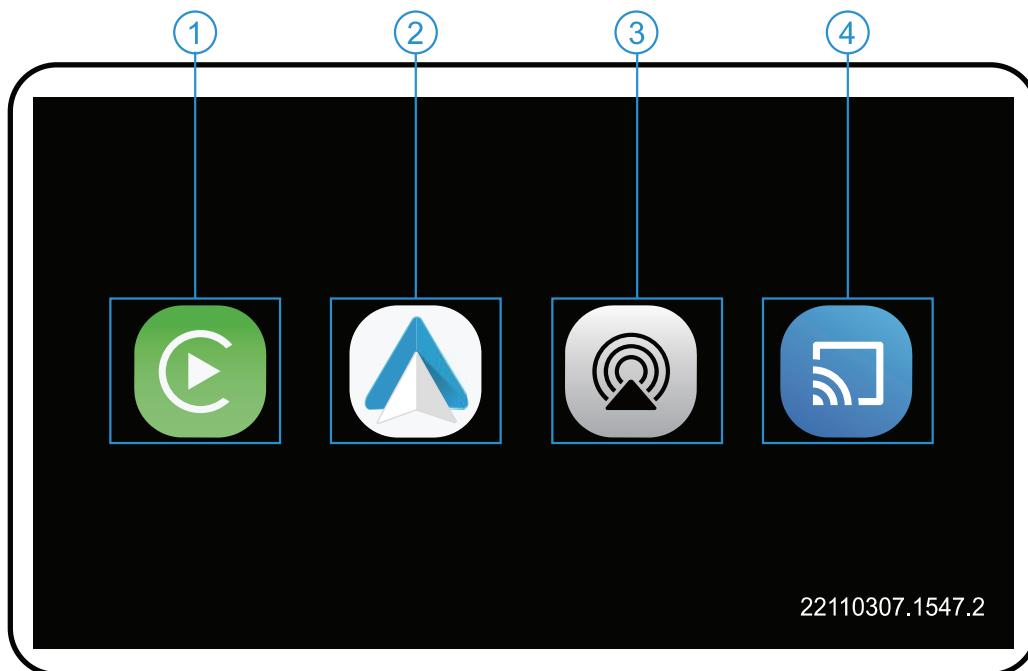


- (1) Status indicator: When not connected to the phone, the blue light remains continuously on. When the phone is connected, the blue light flashes intermittently.
- (2) TypeC port: connect to Carplay port of car.
- (3) USB port: connect to cell phone (wired Android Auto.)

Product hardware parameters

- 1. working temperature: $-20^{\circ}\text{C} - +70^{\circ}\text{C}$
- 2. Input voltage: $5\text{V} \text{---} 1\text{A}$

Home page



① CarPlay

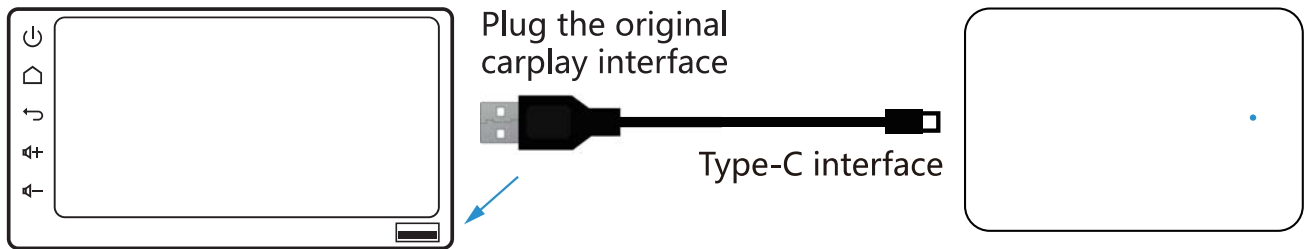
② Android Auto

③ AirPlay

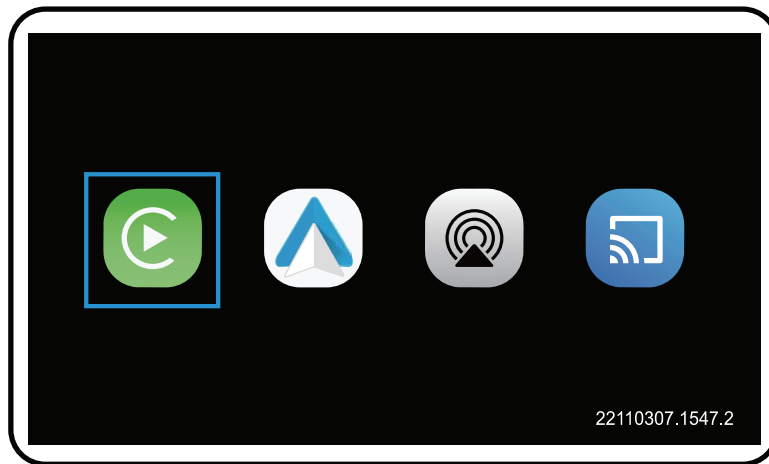
④ MirrorCast

Wireless CarPlay/Android Auto connection

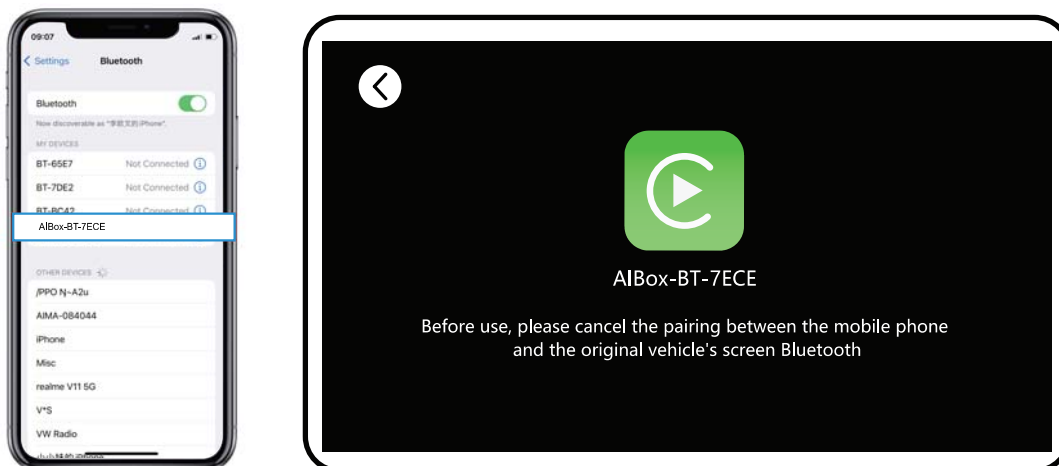
Step 1: Simply plug it into the original CarPlay interface and wait for the box interface to appear.



Step 2: Click the CarPlay icon to enter the connection page.



Step 3: Simply pair the Bluetooth connection with the name: "AIBox-BT-XXXX".



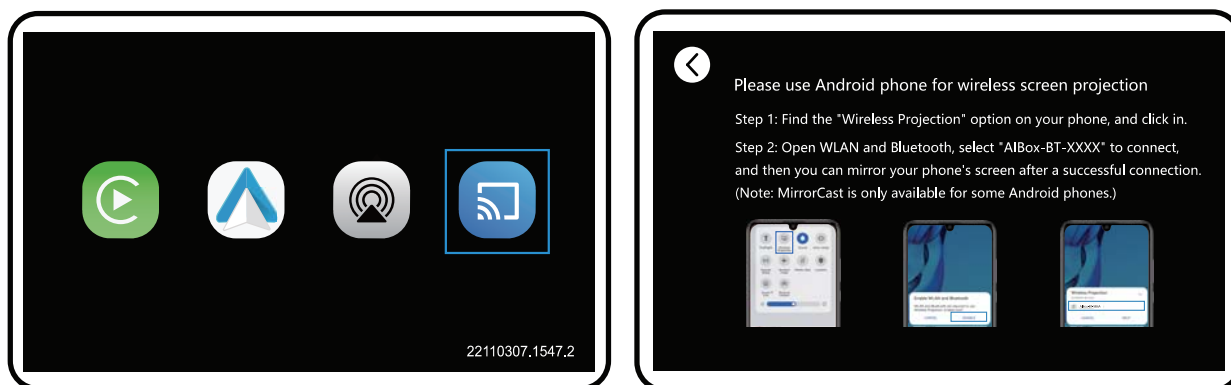
Step 4: Once successfully connected, a CarPlay window will pop up on your phone. Click "Use CarPlay" to enter the CarPlay interface.



Wireless Android Auto connection process as above

MirrorCast connection

Step 1: Click MirrorCast icon to enter the connection page.



Step 2: Find the "Wireless Screen Casting" option on your phone, click to open WLAN and Bluetooth, select "AIBox-BT-XXXX" to connect, and then you can mirror your phone's screen after a successful connection. (Note: MirrorCast is only available for some Android phones.)

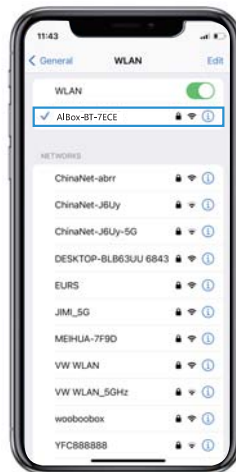
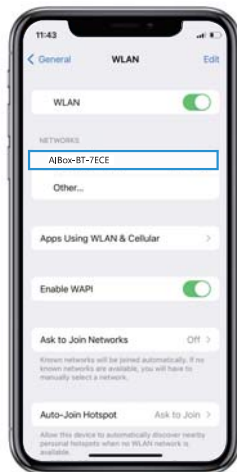


AirPlay connection

Step 1: Click AirPlay icon to enter the connection page.



Step 2: Connect WIFI: AIBox-BT-XXXX, password: 88888888.



Step 3: To mirror your phone's screen, click on the screen mirroring option on your phone, select "AIBox-BT-XXXX", and once you have successfully connected, you can start mirroring.



Issue submission and device upgrade

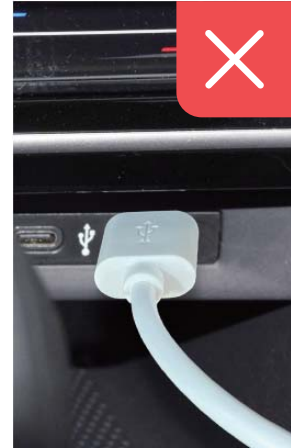
Plug the product into the USB 5V power supply (as shown in the figure below). After the device is powered on, use the mobile phone to connect to the device WIFI. WIFI name: AIBox-BT-XXXX , password 88888888, and enter <http://192.168.1.101> in the browser to enter the background system.



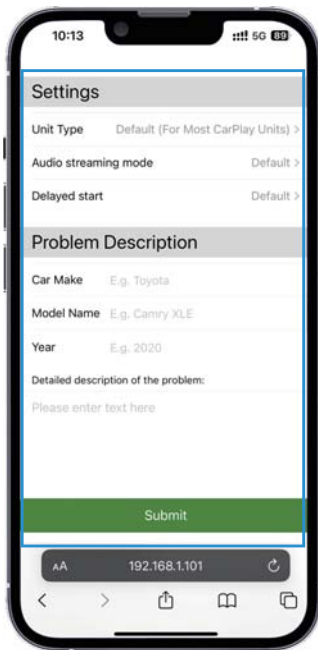
use a cigarette lighter



Using a mobile phone charger

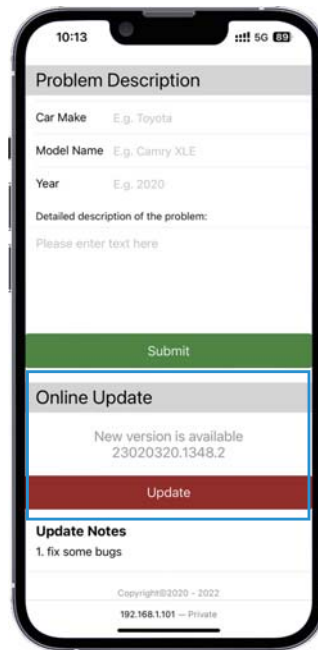


Use the original Carplay port (not recommended)



Issue submission

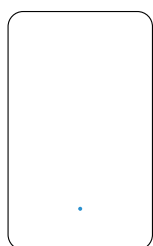
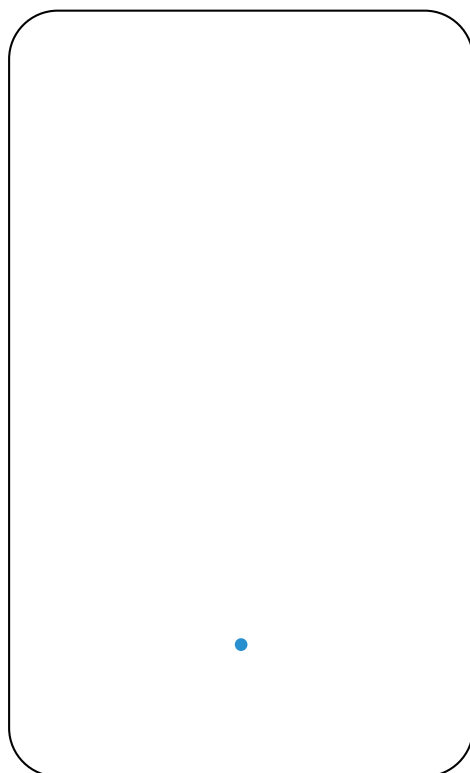
Enter the background system to fill in the problem description, click "Submit" and take a screenshot of the mobile phone to contact the dealer.



Device Upgrade

Enter the backstage system and click "Update" to realize the software upgrade.

取扱説明書



4IN1USBドングル



USB A TO C



USB C TO C



取扱説明書

製品紹介

4IN1USB Dongleは、元の有線CarplayをワイヤレスCarplayとワイヤレスAndroid Autoに自動的に変換し、利用者はCarPlayでPhone/アンドロイド電話などのデバイスに接続し、車の内蔵ディスプレイとコントロール、Siriでコントロールできます

利用者は、簡単かつ安全に通話、音楽鑑賞、メッセージの送受信、ナビゲーションの使用、携帯電話のスクリーンキャストなどを楽しめる

製品特徴

1. 有線と無線のCarPlayをサポートし、車に乗るたびに、お使いの携帯電話に直接接続できる
2. 有線およびワイヤレスのAndroidAutoをサポートし、2つの接続方法はランダムに選択する
3. AirPlayのスクリーンキャストに対応
4. MirrorCastのスクリーンキャストに対応

利用条件

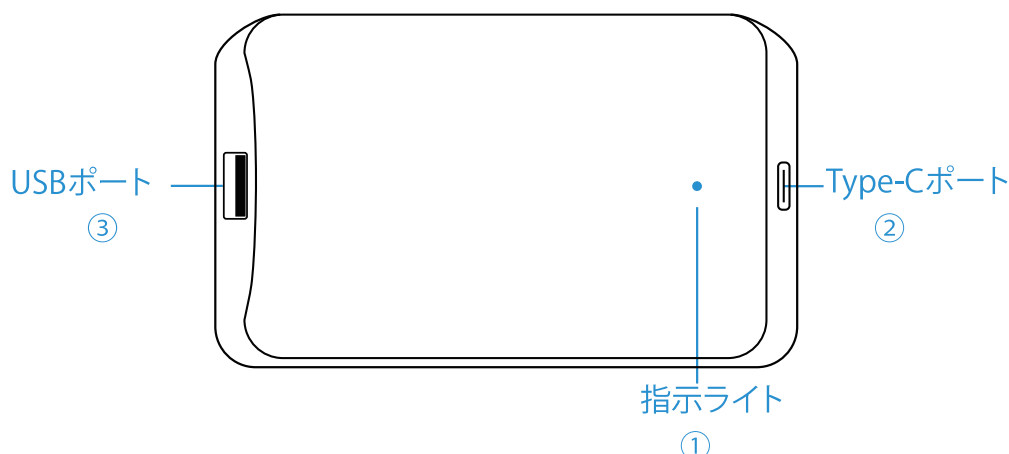
4IN1USB Dongleは、2016年以降の有線車載ホストにのみ使用可能である。スマホを使ったワイヤレス接続はiOS10+ & Android 11+である必要がある

ヒント：本製品がおお客様の車とペアリングしない場合、お客様の車種について弊社に連絡してください

製品リスト

1. 4IN1USB Dongle
2. USB-A からCケーブル
3. USB-C からCケーブル
4. 取扱説明書

製品展示

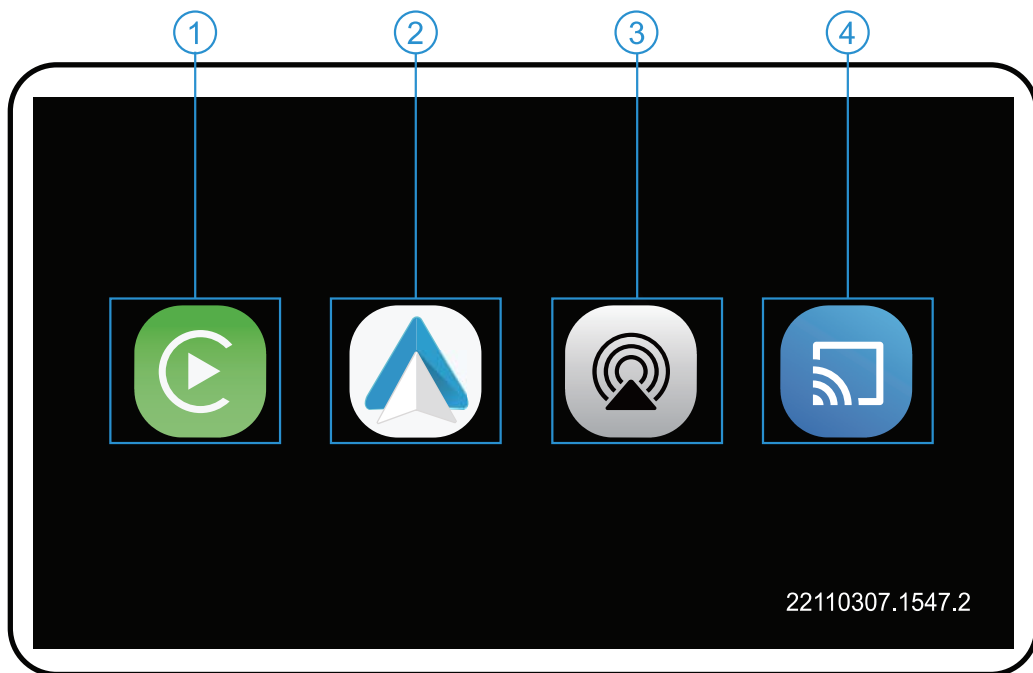


- (1) 状態指示ライト: スマホに接続されないと、青いライトが常に点灯、スマホに接続されると、青いライトが点滅する
- (2) Type-Cポート: 車のCarplayポートに接続する
- (3) USBポート: スマホ(有線AndroidAuto)に接続する

製品パラメータ

- 1. 動作温度: -20°C~+70°C
- 2. 出力電圧: 5V = 1A

メインページ紹介



① CarPlay

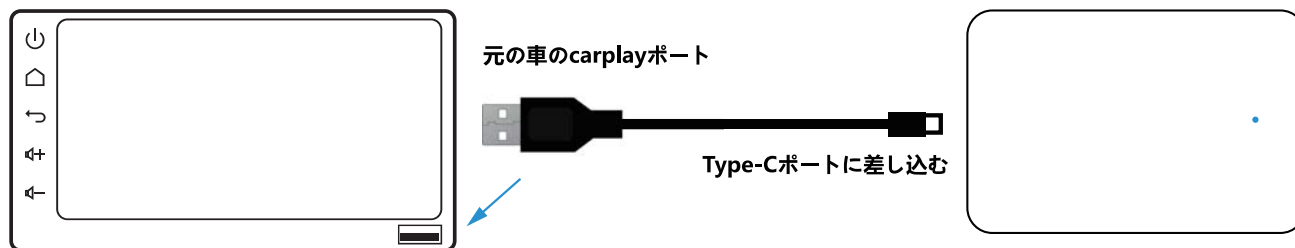
② Android Auto

③ AirPlayキャストスクリーン

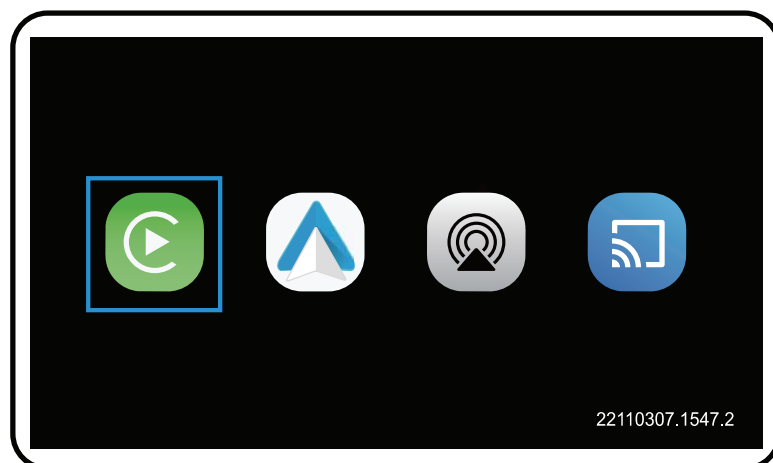
④ MirrorCastキャストスクリーン

ワイヤレスCarPlay/AndroidAuto

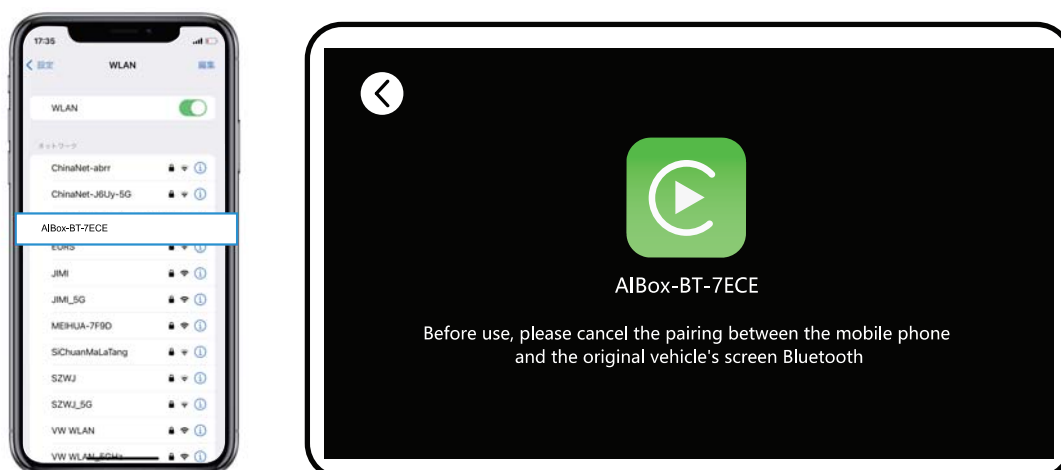
手順一：ボックスを元のCarPlayポートに差し込み、ボックスのインターフェイスを入力するのを待つ



手順二：CarPlayのアイコンをクリックすると接続画面に入る



手順三：スマホでブルートゥースにマッチし、ブルートゥースの名称は：AIBox-BT-XXXX



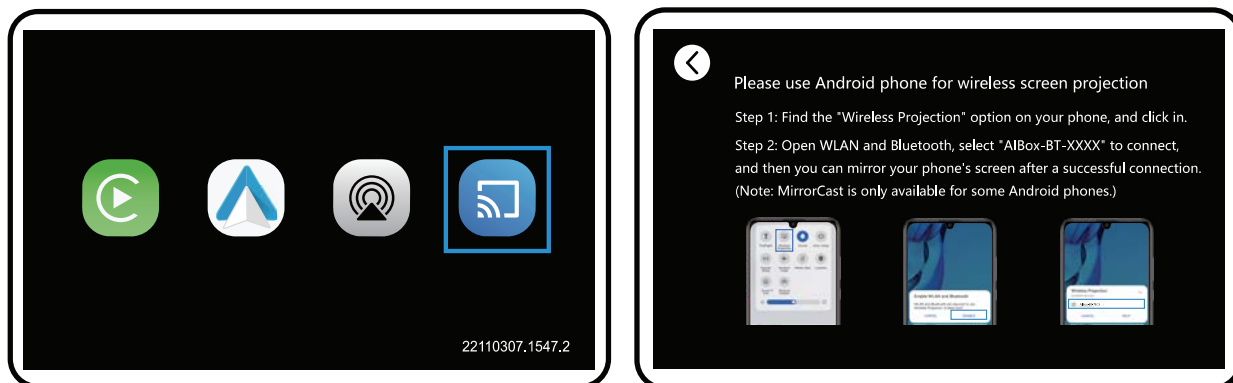
手順四：接続に成功した後、CarPlay車載ウィンドウがスマホにポップアップし、それをクリックしてCarPlayインターフェースに入る



ワイヤレスAndroidAuto接続方法は上記と同様

MirrorCast接続

手順一：MirrorCastのアイコンをクリックすると、接続画面に入る



手順二：スマホ<ワイヤレススクリーンキャスト>を探し、クリックしてWLANとブルートゥースを開き、AIBox-BT-XXXXを選択して接続し、接続成功後にミラーリングできます（一部のアンドロイド端末でMirrorCastが利用可能）

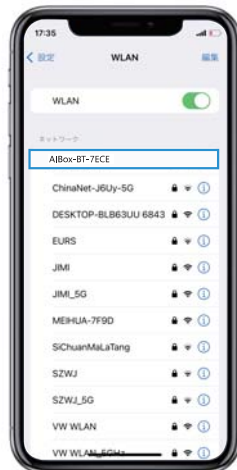


AirPlay接続

手順一：AirPlayのアイコンをクリックすると、接続画面に入る



手順二：WIFI接続：AIBox-BT-XXXX，パスワード：88888888



手順三：スマホ画面ミラーリングをクリックし、AIBox-BT-XXXXを選択し、接続に成功するとミラーリングになる



不具合提出と本体アップグレード

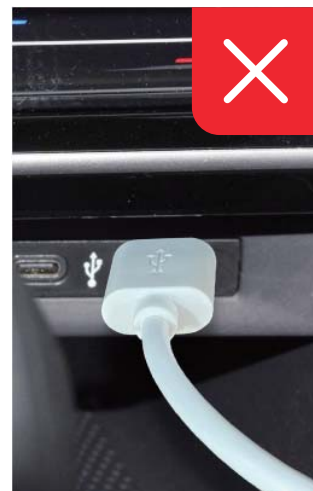
本製品をUSB 5V 電源に接続し（下図）、本体に電源が入った後、スマホで本製品のWIFIを接続し、WIFI名：AlBox-BT-XXXX、パスワード88888888、ブラウザで <http://192.168.1.101> を入力してバックオフィスシステムにアクセスできる。



シガーソケットを使う



スマホ充電器を使う



オリジナル車の Android Auto
インターフェースを使う(非推奨)



不具合提出

バックオフィスシステムにアクセスをして、不具合内容を記入して「送信」をクリックし、スマホのスクリーンショットを添付して販売店に連絡する。



本体アップグレード

バックオフィスシステムに入り、「アップデート」をクリックすると、ソフトウェアのバージョンアップができる。