

(此页不是说明书的一部分)

说明书(型号:HIP-C201L英文版)

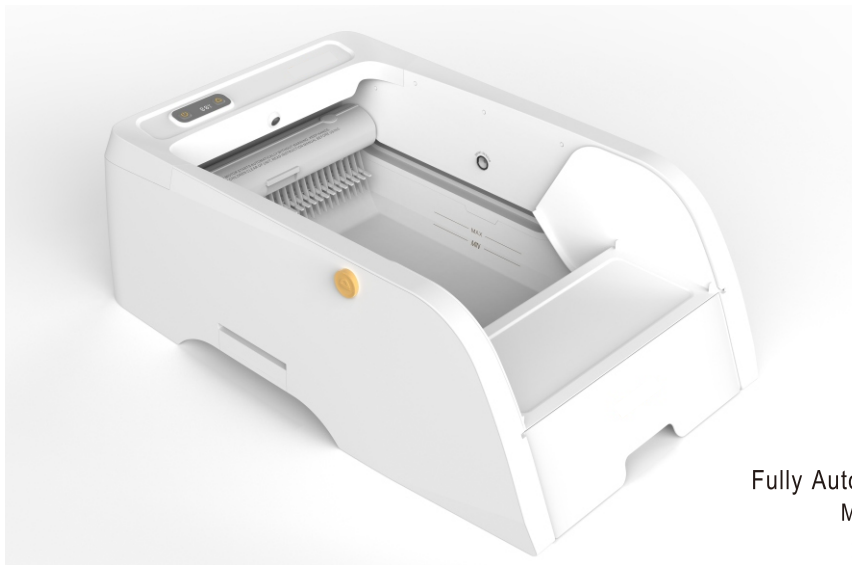
成品尺寸:148*105mm

材质工艺:封面内页均为70g双胶纸

印 刷:单色

结合方式:骑马钉

Product User Manual



Fully Automatic Cat Toilet
MODEL:HIP-C201L

Please read this user manual carefully before using the product

Images are for reference only, please refer to the actual product

Catalogue

I	Precautions	1
II	Product Features and Characteristics	1
III	Packing List	1
IV	Main Technical Indicators	2
V	Instructions for Use	3
VI	Use of the App	7
VII	Cleaning and Maintenance	10
VIII	Common Problems and troubleshooting	10
IX	Certificates of Conformity	11

I. Precautions

- This product should be placed indoors or in a similar indoor environment for use.
- If the height of the cat is below 170mm (weight below 1kg), the machine needs to be switched to manual mode (i.e., turn off the machine before the cat uses it, turn it on after use, and turn off after manually cleaning).
- Please turn on the machine after pouring the cat litter and arranging the collection bucket.
- When adding cat litter, remember it should be below the indicated MAX line and above the MIN line, otherwise, the machine will not work or will be ineffective.
- This product is only suitable for granular bentonite cat litter, it is recommended to purchase Soikoi brand cat litter.
- When this product is in use, the motor will start automatically without warning. Keep hands, clothes, and children away from the machine and read the instructions before use; when storing the product, also prevent infants, toddlers, and those with mental illness from touching it.



II. Product Features and Characteristics

- Intelligent sensing sensor. The machine is on standby when the cat is in the cleaning cabin, and it automatically cleans up after the cat leaves.
- Anti-pinch mechanism, no need to worry about being pinched; the machine rake automatically stops when it is blocked during operation, making it safer.
- WIFI remote APP, multi-cat management, video camera, barrel full reminder, gritting reminder, ultraviolet sterilization, etc.
- Some parts are detachable for cleaning.
- Lower operating noise.

III. Packing List

Mainframe × 1 Power Adapter × 1 Special Garbage Bag (giveaway) × 1 Instructions × 1
Certificate (with instructions) × 1 Telescopic Cloth Tent (when equipped) × 1

-When unboxing, please check if the appearance of the cardboard box or other packaging is in good condition, and verify all accessories. If there is any damage or missing parts, please contact the dealer or manufacturer in a timely manner.

IV. Main Technical Indicators

Product Name: Fully Automatic Cat Toilet

Product Model: HIP-C201L

Power Adapter: Input AC100-240V Output DC12V/2A

Rated Power: $\leq 10VA$

Standby Power: $\leq 0.5VA$

WIFI band: 2.4G /5G

Camera pixels: HD 1080P, night vision is available

Weighing range: 0.5-20kg(MAX)

Barrel full tips, add sand tips

Ultraviolet wavelength: 270nm, synchronized with the machine rake

Countdown Adjustment for 5-stage work: 1 minute, 5 minutes, 10 minutes, 15 minutes, 20 minutes

Cat litter Loading Capacity: 5L

Collection Bucket Capacity: 5L

Operating Noise: $\leq 45dB$ (A weighted)

Electrical Classification: Class II equipment

Product Size: 738mm x 460mm x 250mm

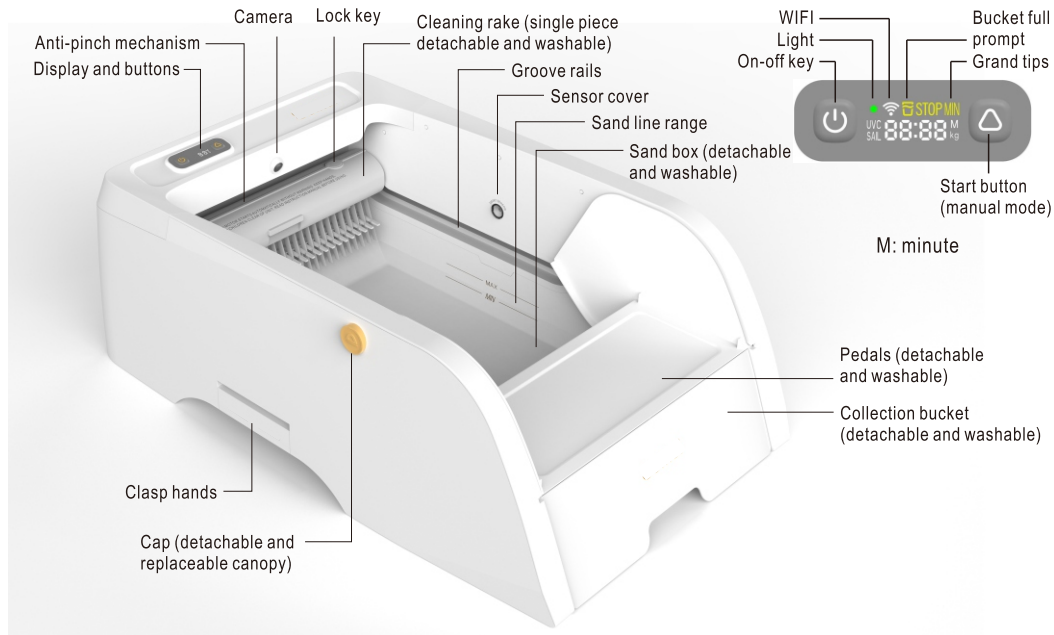
Net Weight: 6.4kg

Normal Working Environment: Ambient temperature 5~40℃, relative humidity $\leq 93\%$, and no condensation phenomenon.

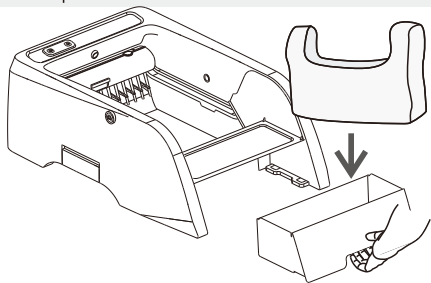
Storage and Transportation Environment: Ambient temperature -20~60℃, relative humidity $\leq 93\%$, and no condensation phenomenon.

Implementation Standard: GB4706.1-2005 Q-HIP002-2022

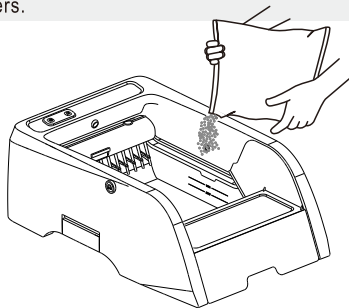
V. Instructions for Use Product Sketch



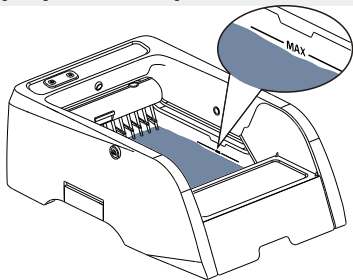
- 1** The machine is placed on the level ground, the collection bucket is pulled out, and the garbage bag is set. Put it back in place.



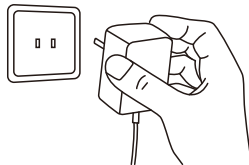
- 2** Pour cat litter (granular cat litter) with a capacity of about 3-5 liters.



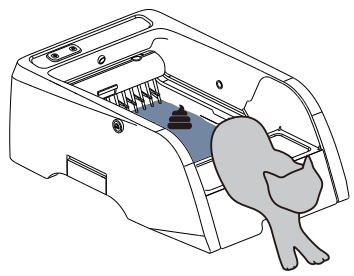
- 3** Flatten the cat litter (you can disassemble the cleaning rake, use the cleaning rake to scrape the cat litter), and never go higher than the highest sand line.



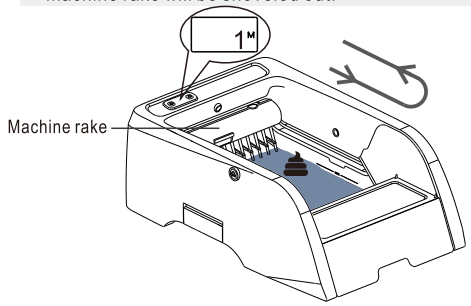
- 4** Connect the power adapter and the machine will self-test and reset to standby mode.



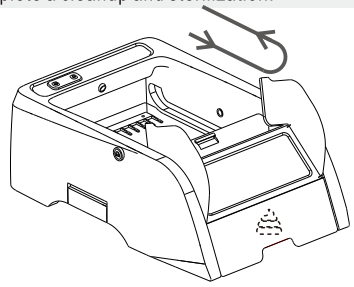
5 After the cat leaves after going to the toilet, the machine automatically enters the work countdown.



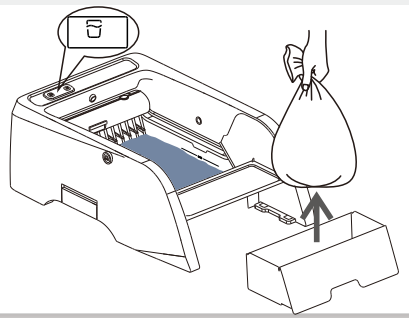
6 When the countdown arrives (factory set to 1 minute), the machine rake will be shoved out.



7 The machine rake shovels the clumped cat litter to the collection bucket, and then returns to reset, that is, to complete a cleanup and sterilization.

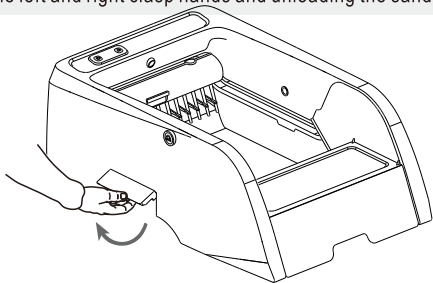


8 When the bucket is full, clean up the garbage bag.



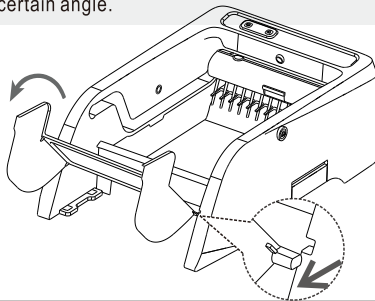
Dismantling of the sand box

As shown in the figure, the machine can be lifted by pulling the left and right clasp hands and unloading the sand box.



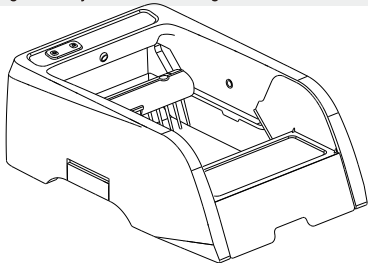
Removal of the pedals

As shown in the figure, the pedal can be removed by rotating it to a certain angle.



Cleaning rake disassembly

In standby, press the start button to let the machine rake out, and then pause, as shown below; Press the two locks with your fingers to eject the cleaning rake.



Other Notes

One-click cleanup (start key)

When the machine is standby, press the start button once, the machine works, and then press pause. Press the start button for 5 seconds in standby to enter the work countdo -wn time selection (1 minute, 5 minutes, 10 minutes, 15 minutes, 20 minutes), and save it after 3 seconds of no operation.

WIFI code(Connect with mobile phone)

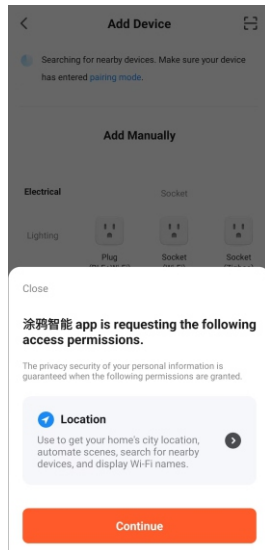
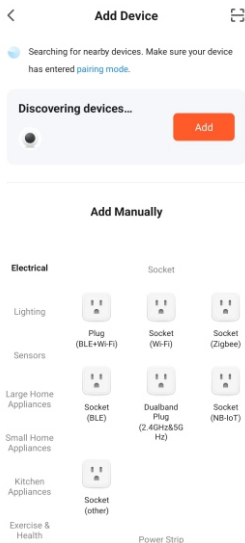
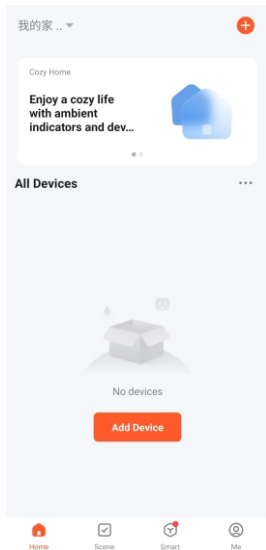
After powering on, press and hold the switch key for 5 seconds to enter the WIFI code matching.

STOP

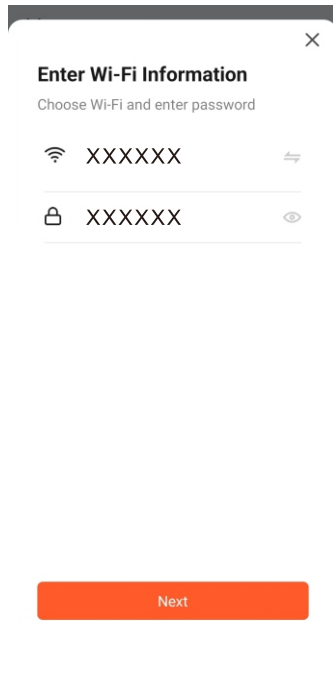
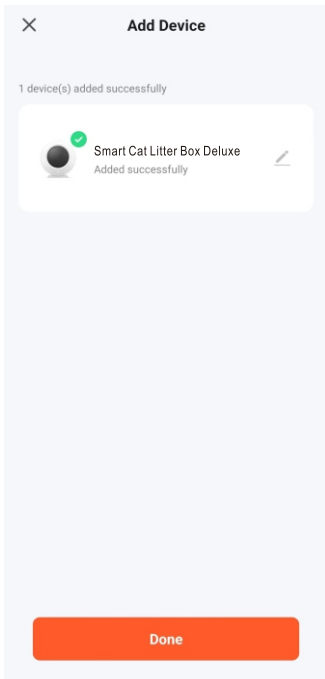
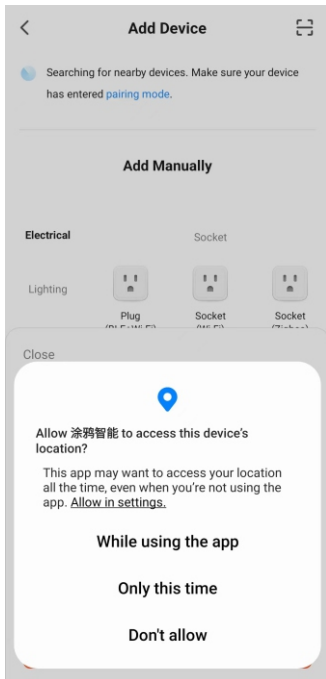
The machine rake pauses the continuous display when it is working, and the machine rake flashes when the work stops abnormally.

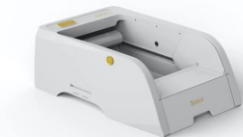
VI. Use of the App

1. The machine is placed within the effective distance of WIFI, and the machine is in standby;
2. When the mobile phone is connected to WIFI (and Bluetooth is turned on), scan the QR code at the product label of the machine (or the back cover of the manual) and install the APP;
3. Open the APP, click "Add Device" on the home page, then press and hold the machine button (see product sketch for details) for 5 seconds, the WIFI icon flashes, and let go after hearing the "boom" sound, it will automatically search for the device;



4. Search for "Smart Cat Litter Box Deluxe" and click "Add". Enter the WIFI password and click "Next".





cat weight
0g



Toilet times
0times



One-click c...



Video Surv...



 Trash full



Cat Litter Kind Setting

Bentonite >



Timed sleep



Health Management



Description of the options

- Smart litter box luxury version: you can click the right icon to edit the name;
- Cat weight: Real-time cat weight;
- Number of toilet visits: real-time feedback on the number of toilet visits throughout the day (24 hours) (including the number of plays);
- One-click cleanup: click to run the cleaning when the machine is in standby, and then click pause;
- Video surveillance: Click to connect to real-time surveillance video;
- Trash Can Full: When the bin is full, it will be highlighted and a message will be displayed;
- Cat litter breed settings: Select the type of cat litter to use, which is related to the accuracy of the trash can full prompt;
- Timed hibernation: Click to add a timer, you can not work for a set time;
- Health management: Click to enter to see the number of toilet visits throughout the day (24 hours), the duration of each excretion and other data;
- Delay Cleanup Settings: Click to enter to set the countdown time for work.

VII. Cleaning and maintenance

- Clean the enclosure and surfaces

The transparent cover of the sensor should be wiped frequently to avoid dust and dirt covering the sensor head and not working, and the groove rail should be blocked by debris. Outside the machine When the case and other surfaces need to be cleaned, unplug the power adapter and wipe with a clean, soft, slightly damp cloth soaked in detergent to prevent liquid from seeping into the inside of the machine.

※Note: There is a circuit board inside the product, so it is forbidden for liquid to penetrate.

- Washable parts (see product diagram)

In order to maintain the hygiene of the environment and the machine, the collection buckets, pedals, sand boxes and cleaning rakes should be dismantled and washed frequently, and should be wiped or dried before being put back into use.

VIII. Common faults and troubleshooting

No.	Symptoms	Cause Analysis	Exclusion Method
1	Not working	<ol style="list-style-type: none">1. The power indicator does not light up;2. The power indicator is on;3. The sensor is blocked by the transparent cover;4. Malfunction	<ol style="list-style-type: none">1. Plug in the power adapter;2. Excessive cat litter; check whether the chute and sand tray are blocked by clumps. After removing any obstructions, unplug the adapter and wait until the display is off before plugging it back in;3. Clean the transparent cover or remove any obstructions;4. Please consult customer service.
2	Do not reset, rotate back and forth or stop	<ol style="list-style-type: none">1. The anti-pinch mechanism is stuck;2. Malfunctions.	<ol style="list-style-type: none">1. Turn the machine upside down to clean any debris from the anti-pinch board;2. Please consult customer service.

3	Abnormal noise during work	There is debris on the rail.	Clean up debris from the grooves.
4	The sand box, inner wall and cleaning rake are bonded	1. Cat litter is not easy to clump; 2. The countdown to work may be too short.	1. Replace with higher quality cat litter for faster and better clumping; 2. Extend the countdown time for operation.

IX. Certificate fo qualification

Product certificate

product name: Fully Automatic Cat Toilet

model:HIP-C201L

Inspection date:

Inspector:

Manufacturer:

FCC Statement

This device complies with part 15 of the FCC Rules. Operation is subject to the following two conditions:

- (1) This device may not cause harmful interference, and
- (2) this device must accept any interference received, including interference that may cause undesired operation.

This equipment has been tested and found to comply with the limits for a Class B digital device, pursuant to part 15 of the FCC Rules. These limits are designed to provide reasonable protection against harmful interference in a residential installation. This equipment generates, uses and can radiate radio frequency energy and, if not installed and used in accordance with the instructions, may cause harmful interference to radio communications. However, there is no guarantee that interference will not occur in a particular installation. If this equipment does cause harmful interference to radio or television reception, which can be determined by turning the equipment off and on, the user is encouraged to try to correct the interference by one or more of the following measures:

- Reorient or relocate the receiving antenna.
- Increase the separation between the equipment and receiver.
- Connect the equipment into an outlet on a circuit different from that to which the receiver is connected.
- Consult the dealer or an experienced radio/TV technician for help.

FCC Caution: Any changes or modifications not expressly approved by the party responsible for compliance could void the user's authority to operate the equipment. This transmitter must not be co-located or operating in conjunction with any other antenna or transmitter.

RF Exposure Considerations

This device complies with FCC radiation exposure limits set forth for an uncontrolled environment. This equipment should be installed and operated with minimum distance 20cm between the radiator & your body.



Scan QR code to
download APP

