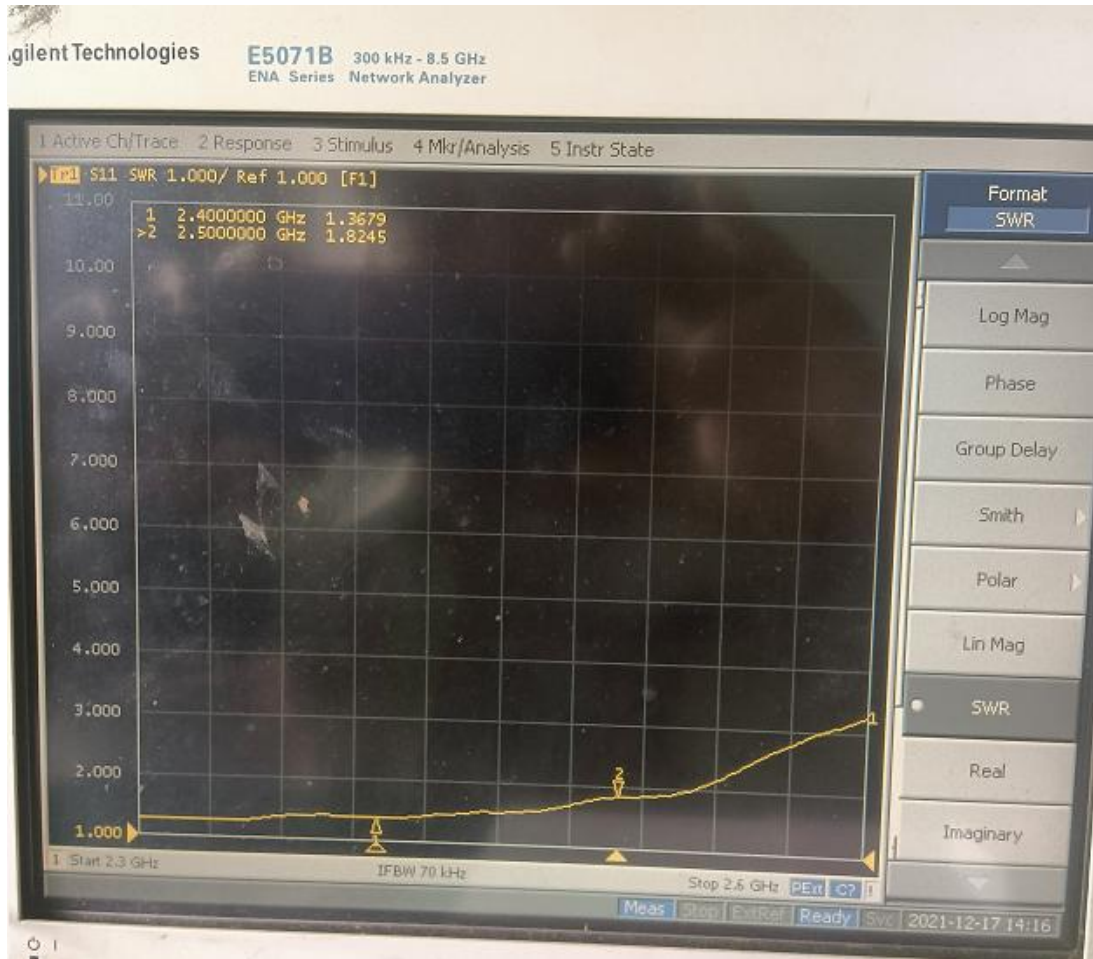

一、 Product pictures



二、 Product parameters

Product testing parameters			
Product name	FPC	(Model Type)	GDT-P2.4--L90
(Electrical Specifications)			
(Frequency Range)	2400-2500MHz	(Polarization)	perpendicular
(Impedance)	50 Ω	Radiation	QXCOMM
(VSWR)	≅ 2.0	(Power)	50W
(Gain)	3dBi	(Bandwidth)	100M
(Mechanical Specifications)			
(Dimensions)	50±1mm*8±0.5mm	(Chassis Color)	black
(Connector)	IPEX	(Cable Length)	90±5MM
(Chassis Material)	FPC		
(Working Temperature)	-40℃--+85℃	(Limit Temperature)	-40℃--+85℃

三、S11(VSWR、Return、Smith)

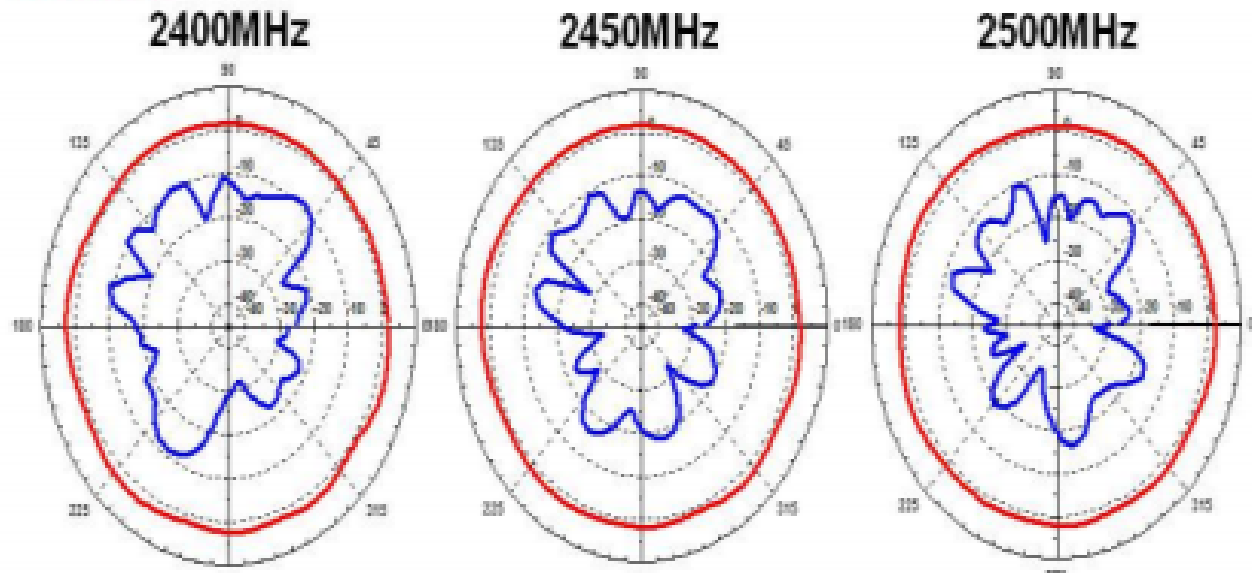


四、Antenna gain and efficiency

Test Point ID	Freq. (MHz)	TRP (dBm)	Gain (dBi)	Directivity (dBi)	Efficiency (%)
1	2400.0	2400.00	2.34	5.51	56.0%
2	2410.0	2410.00	2.55	5.82	54.0%
3	2420.0	2420.00	2.54	6.12	53.9%
4	2430.0	2430.00	3.08	6.30	60.6%
5	2440.0	2440.00	3.15	6.27	58.7%
6	2450.0	2450.00	3.23	6.34	57.1%
7	2460.0	2460.00	2.15	6.41	52.2%
8	2470.0	2470.00	2.96	6.29	52.1%
9	2480.0	2480.00	2.72	6.00	51.9%
10	2490.0	2490.00	2.64	6.05	49.7%
11	2500.0	2500.00	2.63	6.02	47.3%

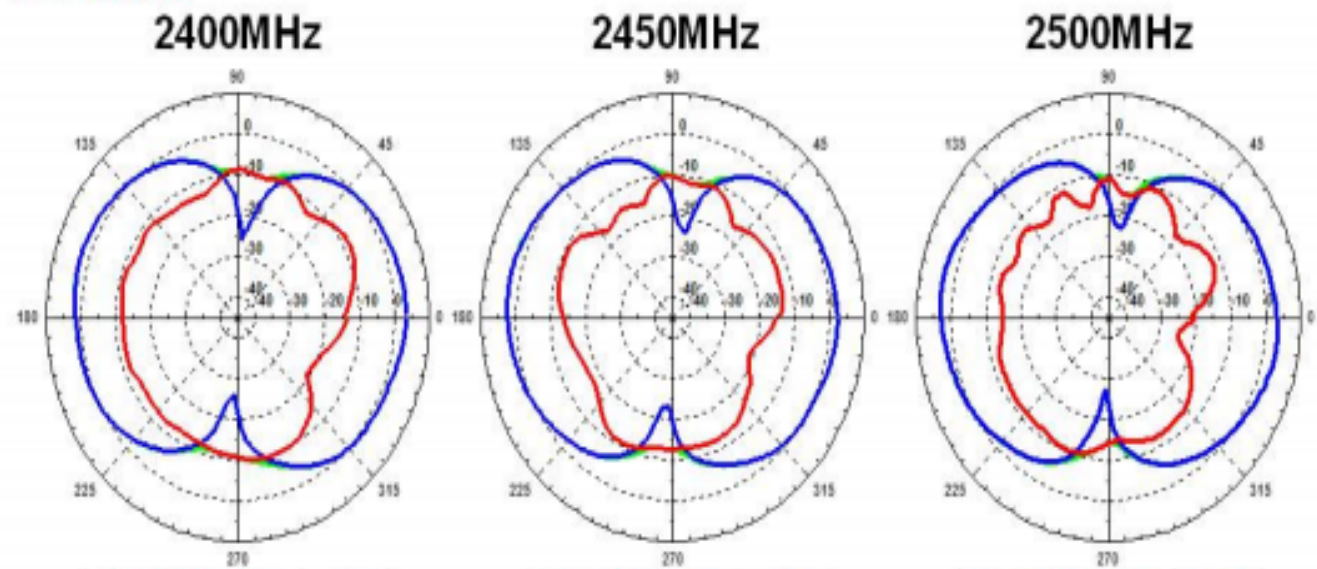
Electrical Performance-Radiation Pattern and Gain

H-Plane

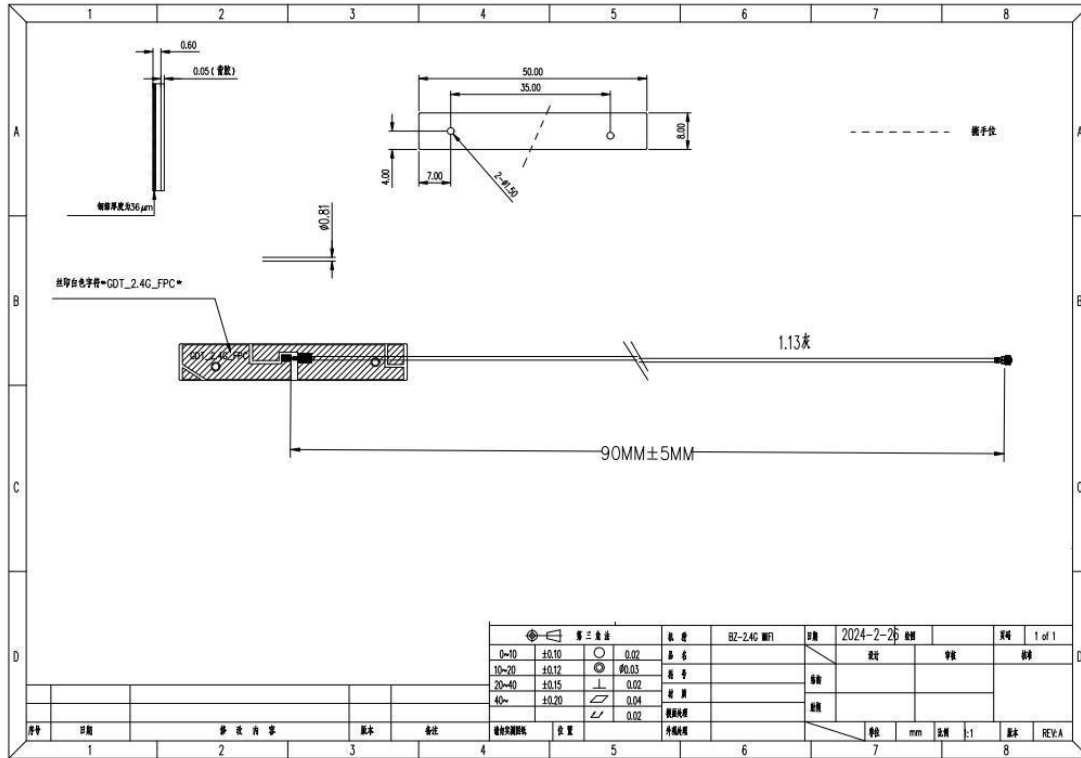


Electrical Performance-Radiation Pattern and Gain

E-Plane



五、Structural drawings



六、Environmental performance test

project	Project test conditions	Specifications
Storage environment	<p>The test temperature, humidity and air pressure are as follows when there is no specific condition:</p> <ol style="list-style-type: none"> The temperature is - 30 °C~+80 °C Relative humidity: 45% - 85% The air pressure is 86kpa-106kpa 	Normal electrical and mechanical performance
High and low temperature test	5 cycles between 70 ° C and 40 ° C, then under normal conditions 1-2H, check the appearance quality.	The size shall meet the requirements and Mechanical and electrical performance

Constant damp heat resistance test	<p>Relative humidity: $95 \pm 3\%$, test temperature: $40\text{ }^{\circ}\text{C}$. After lasting for 2h,</p> <p>The electrical performance shall be measured within 5 minutes after the test object is taken out, and the test object shall be within the normal range</p> <p>Part 1-2H, check the appearance quality</p>	<p>The size shall meet the requirements and</p> <p>Mechanical and electrical performance</p>
vibration test	<p>Vibration frequency range: 10-55HZ, displacement amplitude: 0.35MM, acceleration amplitude:</p> <p>50.0M/s, frequency sweep cycles: 30 times</p>	<p>Normal electrical and mechanical performance</p>
Drop test	<p>Free fall for 3 times in the direction of mutually perpendicular axes at a height of 1M</p>	<p>Normal electrical and mechanical performance</p>