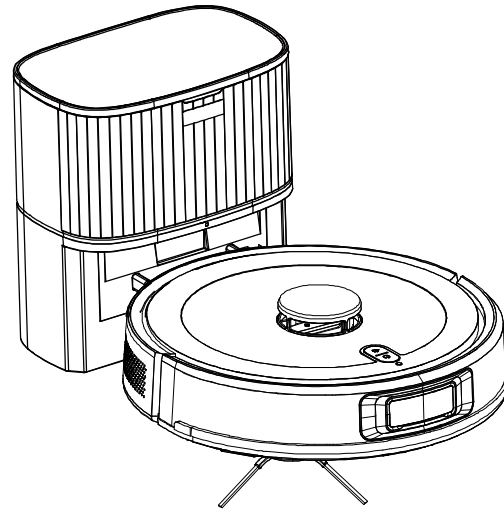


# Manual of Laser sweep and mop integrated robot



Please read this Manual carefully before use and keep it properly; the Product applies to the areas with an altitude below 2,000m only

## | Maintenance prompts

The Product should be maintained by professional maintenance personnel who have passed the training with the corresponding qualification only.

It is forbidden to repair the Product arbitrarily, in order to avoid serious consequences such as electric shock.

For any fault of the Product, please refer to the Common Faults and Troubleshooting before contacting the customer service personnel.

If the fault still exists, please unplug the power plug to cut off power supply and contact us.

Please read the Manual carefully in order to use the Product correctly.

## | Environmental Impact Report for User

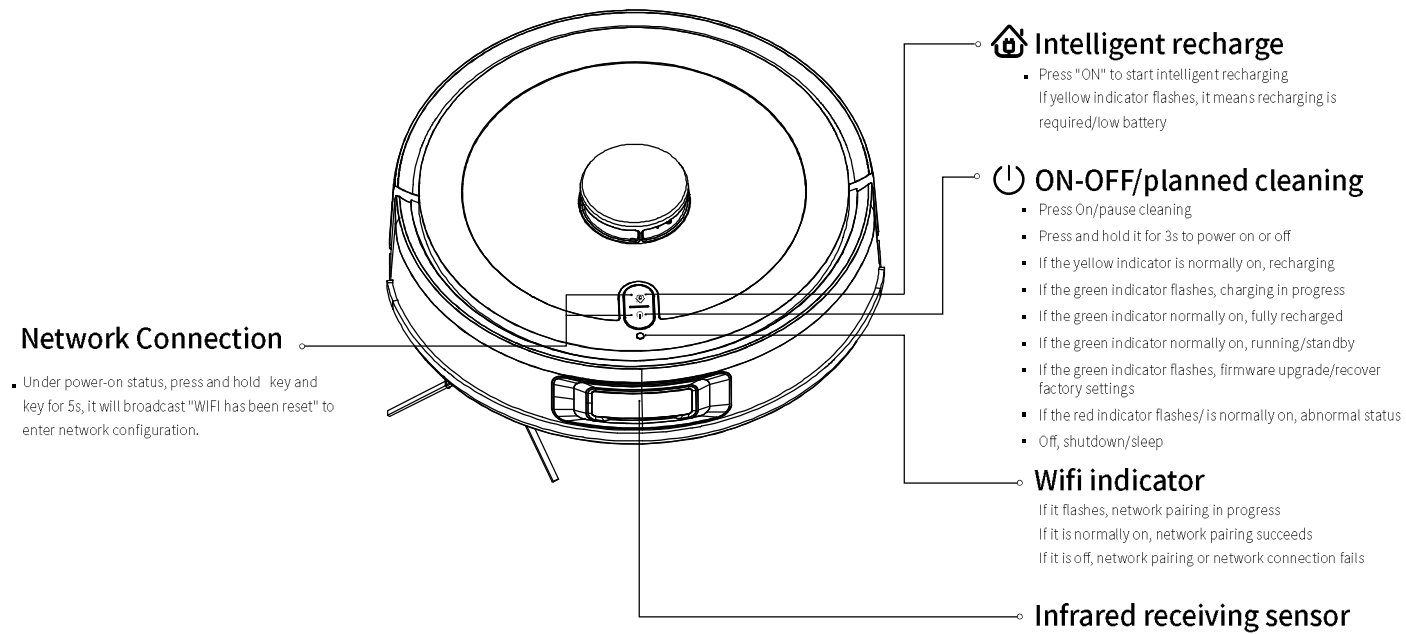
1. All packages are eco-friendly and recyclable. Please handle these packages on an environmentally-friendly manner, in order to protect the environment.
2. Do not let children play with the plastic film and package box for fear of suffocation. The package is not a toy, keep it beyond children's reach.
3. Please handle the Product until it cannot be used any longer before scrapping it. The product to be scrapped contains recyclable materials. Please handle them properly or recycle them, in order to protect our environment.

## | Contents

Product Introduction .....	1
Installation .....	4
Use .....	5
Wi-Fi Connection .....	6
Daily Maintenance .....	7
Basic Parameters .....	11
Names and Concentrations of Hazardous Substances in the Product .....	11
Troubleshooting .....	12
Precautions .....	13

Please read the Manual carefully in order to use the Product correctly.

## Product Introduction



### Network Connection

- Under power-on status, press and hold key and key for 5s, it will broadcast "WIFI has been reset" to enter network configuration.

### Intelligent recharge

- Press "ON" to start intelligent recharging
- If yellow indicator flashes, it means recharging is required/low battery

### ON-OFF/planned cleaning

- Press On/pause cleaning
- Press and hold it for 3s to power on or off
- If the yellow indicator is normally on, recharging
- If the green indicator flashes, charging in progress
- If the green indicator normally on, fully recharged
- If the green indicator normally on, running/standby
- If the green indicator flashes, firmware upgrade/recover factory settings
- If the red indicator flashes/is normally on, abnormal status
- Off, shutdown/sleep

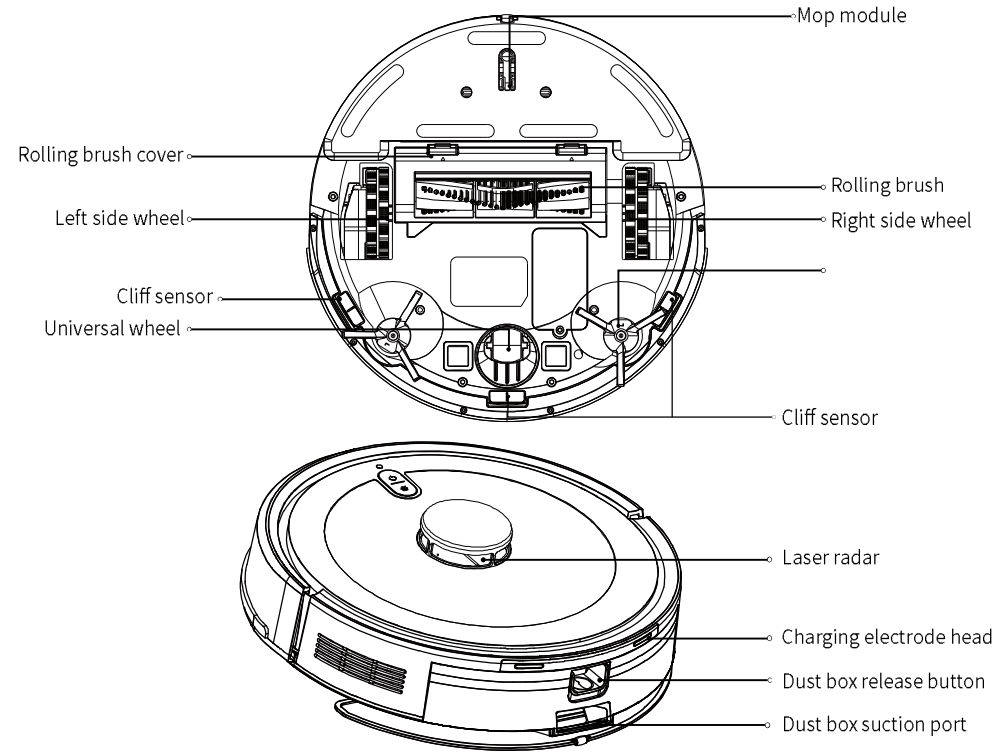
### Wifi indicator

- If it flashes, network pairing in progress
- If it is normally on, network pairing succeeds
- If it is off, network pairing or network connection fails

### Infrared receiving sensor

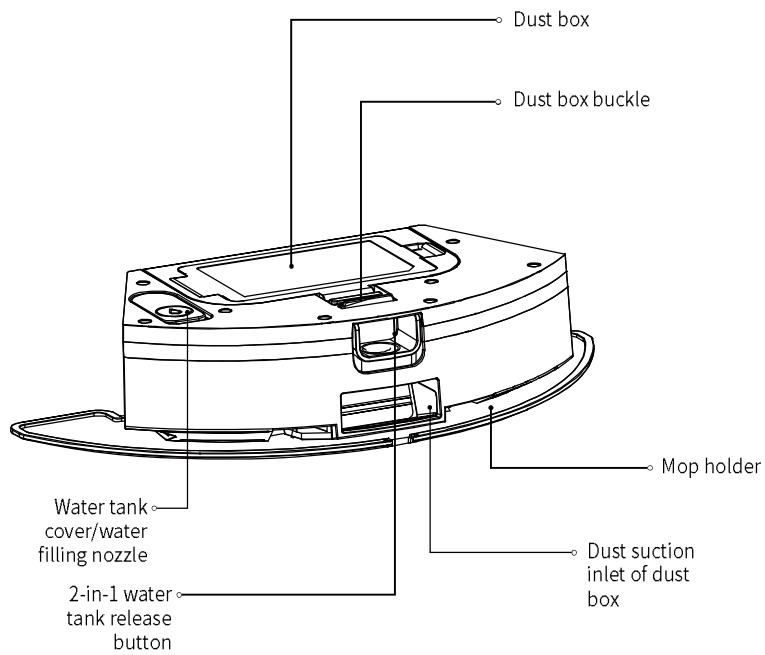
# Product Introduction

Unit

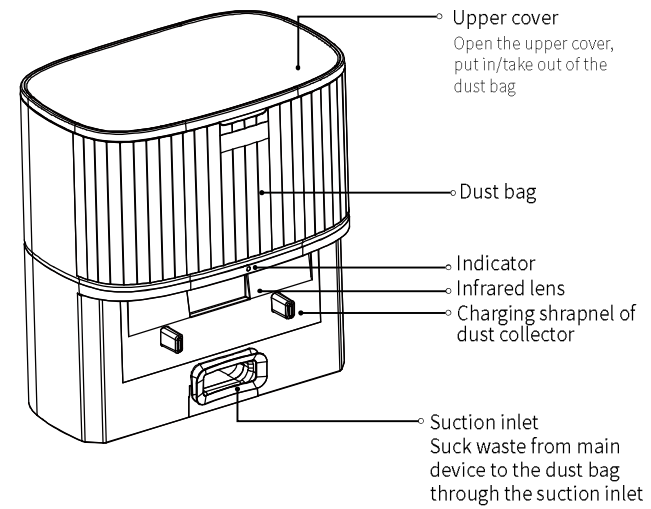


## Product Introduction

### 2-in-1 water tank



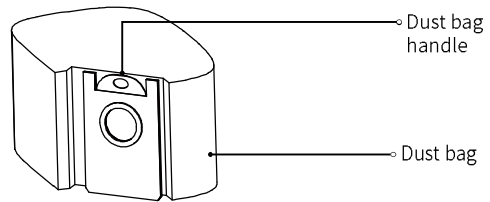
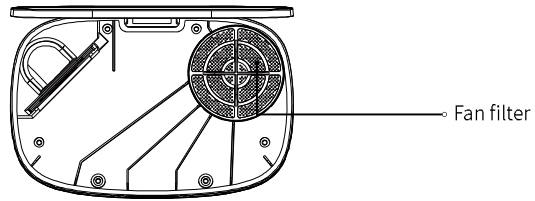
### Dust collector (for dust collection and recharging)



#### Status descriptions of indicator lamps for dust collection charging pile

Indicator	Red	White	Off
Introduction	If the red indicator flashes: The dust bag is full or not installed properly	If the white indicator normally on: Power supply is connected If the white indicator flashes slowly: Charging in progress If the white indicator flashes quickly: Dust collection in progress	Indicator will be off after power-off.
Remarks:	*Red indicator flashes/ is normally on when the dust collector has a fault		

## | Product Introduction

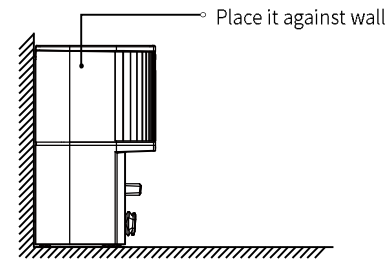


Dust bag (dust collector is mounted with 1 dust bag)  
Prompt: Dust bag is consumable and is not recyclable. Please replace it regularly.

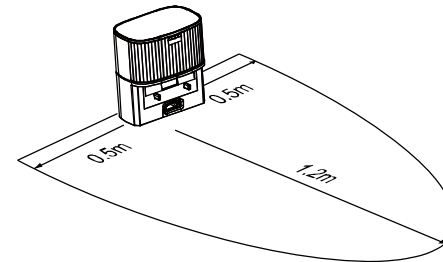
## | Installation

Dust collector

1. Put the dust collector flat, insert the power plug into the socket that meets the requirements, and connect the power supply.



2. Make sure there are no obstacles within 1.2m at front, or within 0.5m at both sides of the dust collector. Note: Do not put it on the carpet to avoid affecting the functions



## Instructions for Use

### 1. On/off

Press and hold "⏻" key for 3s: The power indicator will flash slowly in green for 4s until it is normally on in green, then the Product will enter standby status. When the Product is static, press and hold "⏻" key for 3s to power off, and the power indicator will be off.

The Product will enter sleep status when it is idled for 10min; under this status, press any key to wake it up.

Prompt: The Product can't be powered off or enter sleep status during charging.

### 2. Cleaning

Under startup status, press "⏻" key and it will give out a voice prompt "Start cleaning". During cleaning, press "⏻" key to pause cleaning. Prompt: Cleaning function will be disabled when battery is low.

### 3. Auto/manual recharging

After finishing cleaning, it will give out a voice prompt "Cleaning completes, start recharging" and the Product will start auto recharging automatically. When battery is low during cleaning, the Product will enable auto recharging.

### 4. Fill water to the water tank or clean mop during operation

Press "⏻" key to pause the Robot, remove the mop module/2-in-1 water tank, fill water or clean the mop, install back the mop module, press the key again to continue operation or mopping.

### 5. Network pairing and firmware upgrade

Scan the QR code to download APP, reset Wi-Fi according to APP prompts of mobile phone (for details, please refer to Page 6 "WiFi Connection". You can query and update device firmware directly through APP. Make sure the Product is under charging status and battery level is not below 30% during update. For details of update, see the guidance in APP. After download succeeds, configure the network according to APP prompts. After the main device is connected to the network, the functions such as remote cleaning and appointment cleaning can be enabled through APP.

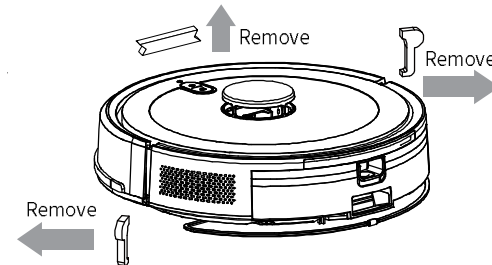
### 6. Fault status

In case of a fault, the Product will give out a voice prompt and the power indicator will flash quickly in red. Please refer to "Troubleshooting" for the solution.

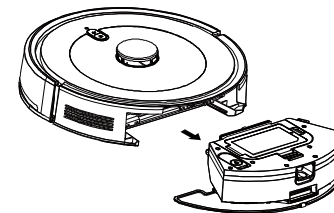
The Product will enter sleep status automatically if it is idled for 10min under fault status.

### Use

1. Lay the Product flat, remove the stop bar at both sides of the front bumper, as well as the stop bar at front end position of switch.

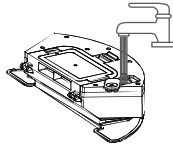


2. Press release button on dust box, take out the 2-in-1 dust box and water tank. When using the 2-in-1 water tank for the very first time, it may contain small amount of water, which is left after production test and normal phenomenon. Please feel relieved to use it.

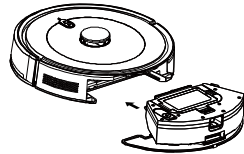


## Instructions for Use

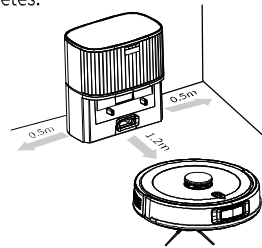
3. Fill the water tank with water, then insert the water inlet firmly.



4. Install the 2-in-1 water tank/mop holder into the main device in turns.



5. Press and hold "⏻" key for 3s to start the Product, then press "🏠" key to start auto recharging of the Product. The Product will enter ready status after recharging completes.



Note:

1. When the sweeper works for more than 1 minute and returns to the dust collection station, it will start the automatic dust collection to clean the dust box garbage.
2. The Product may fail to start when battery is low. Please fully recharge the Product firstly.
3. When battery is low during cleaning, the Product will return to the dust collector for recharging; after recharging is done, it will return to the interruption position to continue cleaning. (It should be turned on in APP)

## APP connection

Scan QR code to download and install APP. For users who have installed APP, it will enter the device connection page directly. You can also search "Tuya" APP in application store for download and installation.

Open the homepage of APP, click "+" at the upper right corner, add the device according to prompt of APP.



Note: Due to the upgrade and update of the APP, the actual operation may slightly differ from the description above. Please follow the instructions in the current APP for operation.

## Reset Wi-Fi

Press and hold "⏻" key and "🏠" key at the same time for 5s; when you hear "WIFI has been reset", the blue indicator will flash slowly and the sweeping robot will wait for connection.

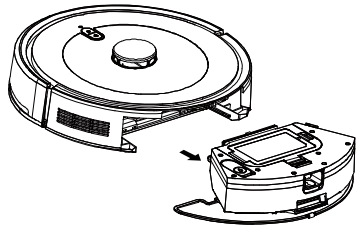
Prompt: Only WIFI network of 2.4GHz frequency band is supported.



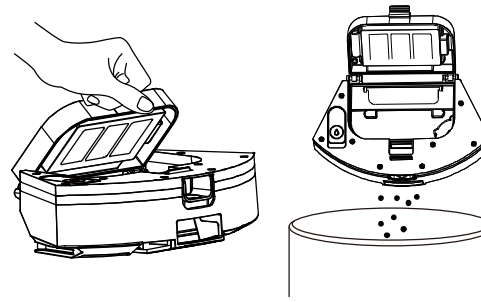
## | Routine Maintenance

Cleaning of 2-in-1 water tank

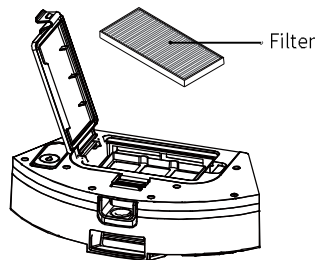
1. Press and hold 2-in-1 release button, and pull out the 2-in-1 water tank at the same time.



2. Pull the buckle of 2-in-1 water tank and dust box, and pour the waste



3. Take out the filter.

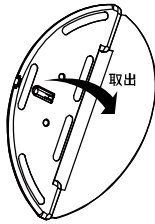


4. Remove the foreign matters on filter and filter card with a cleaning brush.

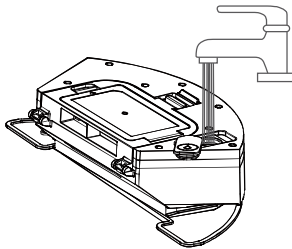


## | Routine Maintenance

5. Invert the mop module, take down the mop for replacement or cleaning.



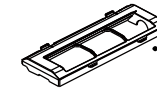
6. Open the cover of water tank, fill a proper amount of water and fasten the water filling nozzle.



Prompt:

1. Please clean the mop in time, for the mopping effects will be weakened if mop has much dirt.
2. Remove the mop for cleaning and installation. It is forbidden to clean it on the 2-in-1 water tank; otherwise, the water can be damaged easily.
3. It is advised to replace the mop once every 6-12 months, in order to ensure good cleaning effects.

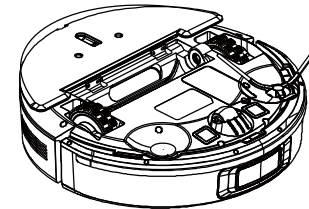
Clean the side brush



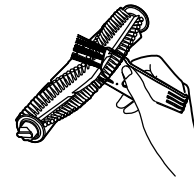
Rolling brush cover



Rolling brush



2. Cut the hair that is twined on rolling brush with a cleaning knife, then clean the rolling brush by using the cleaning brush at the other side of cleaning knife.

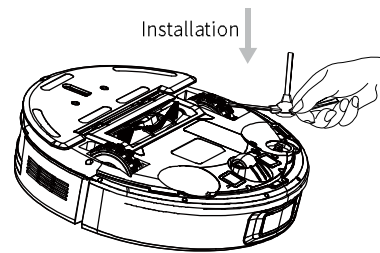


3. Install back the rolling brush and rolling brush cover, fasten the fastening buckle.

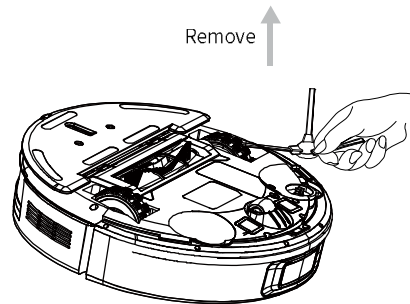
## Routine Maintenance

### Clean/Replace Side Brush

1. Install side brush, insert it into slot until hearing a "click" sound to complete installation.



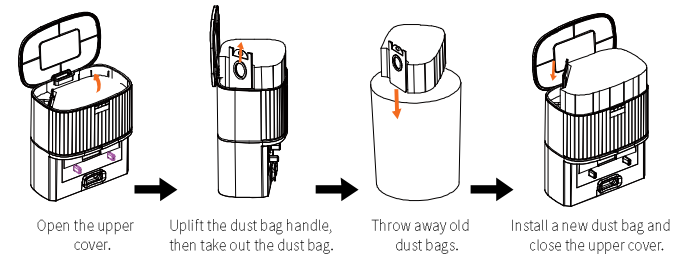
2. To clean or install the new side brush, take down the side brush manually and then install it back.



Prompt: It is advised to replace the side brush once every 3-6 months, in order to guarantee the cleaning effects.

### Replace Dust Bag

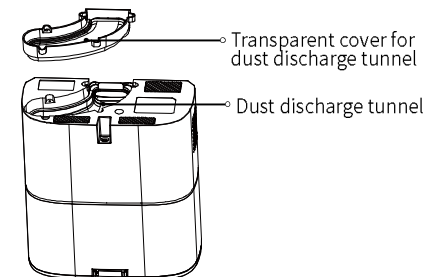
1. When the dust bag is full, the dust collector's Red indicator will flash or send out notice via APP. Please replace the dust bag in time. White indicator is normally on when dust bag is in normal use.



### Clean Dust Discharge Tunnel

1. When the Red indicator of dust collection station flashes after replacement of dust bag, it is advised to unplug the power socket, invert the charging pile of dust collector, and check if the dust discharge tunnel is blocked by foreign matters. When dust discharge tunnel is blocked, dismantle its transparent cover with a screwdriver and remove the foreign matters by referring to the diagram below:

Attention: Do not dismantle it by force. Restore it after cleaning is done.



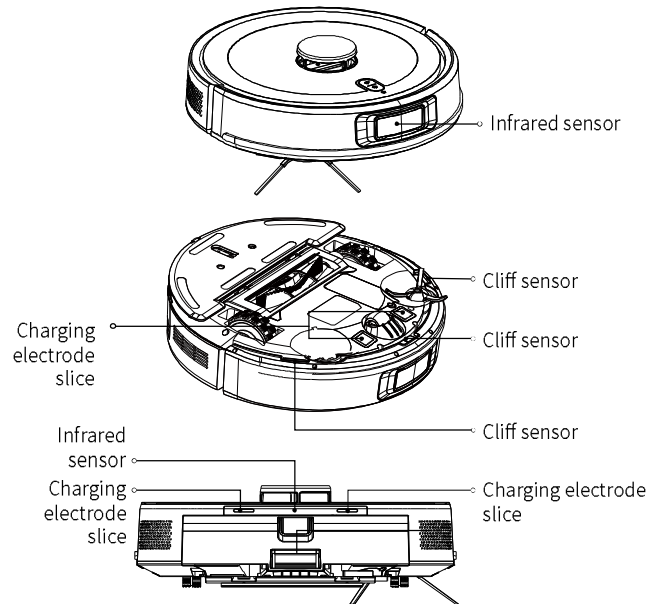
## Routine Maintenance

### Clean Sensor

1. It is advised to gently wipe each sensor with clean and soft cloth once a week, in order to ensure normal functioning of the product.

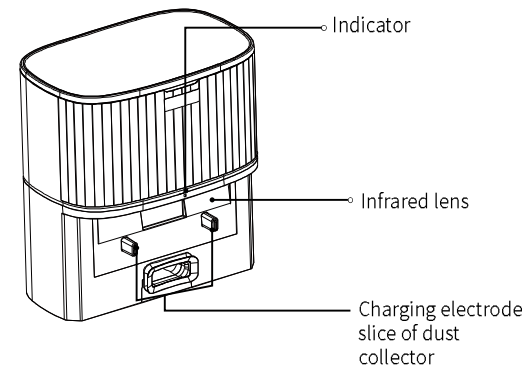
### Sweeping robot:

Cliff sensor ×3      Charging electrode slice ×4  
Infrared sensor ×2



### Dust collection charging pile:

Indicator ×1  
Infrared lens ×1  
Charging shrapnel of dust collector ×2



### Battery maintenance

1. The Product is provided with built-in high-performance rechargeable lithium battery. Please keep it under charged status in order to maintain its performance.
2. When the Product will be long idled, please power it off for storage, recharge it once a month to avoid damages due to overdischarge.

## Basic Parameters

---

### Sweeping robot

---

Product name:	Laser sweeping robot
Product model:	L100
Product dimensions	310 x 316 x 80mm
Rated voltage	14.4V
Rated voltage of main device	50W
Battery type	Lithium ion battery pack
Battery capacity	2600mAh
Wireless connection	Wi-Fi IEEE 802.11 b/g/n 2.4GHz

---

### Dust collector

---

Rated input	220V~50/60Hz
Rated output	19V ---1.2A
Rated power	700W
Product dimensions	

---

### Entire device

---

Net weight of product	4.1kg
Executive Standard	GB 4706.1-2005, GB 4706.7-2014, GB4343.1-2018, GB 17625.1-2012

---

## Troubleshooting

Faults	Solution
Fault 1: Confirm that laser radar is not blocked	Please inspect or remove the foreign matters around the laser radar, or move the main device to a new position and restart it
Fault 2: Please wipe the cliff sensor, move it to a new position and restart it	Please wipe the cliff sensor of main device and then restart it (please refer to manual for sensor position) or move the main device to a new position and restart it
Fault 3: Intensive magnetic field detected, please move it to a new position and try again	Please move the main device to a new position and try again
Fault 4: Please inspect and remove the foreign matters of collision sensor	Please try to touch the collision bar, remove the foreign matters and then restart it
Fault 5: Main device temperature error, please wait until temperature is normal	Main device temperature is too high or too low. Please wait until temperature is normal before use
Fault 6: Charging error, please clean the charging contact area	Check if the original power adapter is used and the charging base is laid flat: Please power off main device and charging base and then wipe its metal contact plate

## Common problems

Problem type	Solution
Startup failure	Low battery, please recharge it on charging base before use; the ambient temperature is too low (below 0°C) or too high (above 50°C)
Cleaning failure	Low battery, please recharge it on charging base before use
Recharge failure	There are too many obstacles near the charging base, please put it in an open place. The main device is too far away from charging base. Please put the main device near the charging base and try again.

Problem type	Solution
Abnormal behavior	Restart after power-off
Abnormal sound during cleaning	The rolling brush, side brush or left/right wheel may be twined with foreign matters. Please power off and clean them
Decreased cleaning ability or dust loss	2-in-1 water tank is full, please clean it; the HEPA is blocked, please clean it; the rolling brush is twined with foreign matters, please clean the main brush
Wi-Fi connection failure	Poor Wi-Fi signal, make sure the main device is in the area with good Wi-Fi signals; Wi-Fi connection error, please reset Wi-Fi, download the latest APP and try again.
Not execute continuous sweeping after breakpoint recharging	Confirm that the main device is not under DND mode, for it will not continue sweeping after manual recharging or after main device is put back to charging base for recharging
Fail to return to charging base after fixed point sweeping or relocation	The main device will regenerate the map after fixed point sweeping or long distance movement. When auto recharging fails due to long distance to charging base, please put the main device to charging base manually for charging.
Failure to charge	Make sure there are enough space around the charging base, the charging base electrode surface has no dust and obstacles
Scheduled cleaning does not work	Confirm that equipment is networked; otherwise, the equipment may fail to synchronize or execute scheduled sweeping
The main device is always offline	Make sure the equipment is networked successfully and always within the coverage range of Wi-Fi
Mobile phone has failed pairing with equipment	Make sure the charging base and main device are within the coverage range of Wi-Fi and the model is good. Reset Wi-Fi and conduct pairing by instructions

## | Precautions

- . The Product applies to floor cleaning of household environment. Do not use it for outdoor (such as outdoor balcony), non-floor (such as sofa), commercial or industrial environment;
- . Do not use the Product in suspended environment (such as duplex floor, open balcony, roof) which have no barriers;
- . Do not use the Product when temperature is above 45°C or below 0°C or the ground has liquid and viscous substances; please pack up the wires in house before use, to prevent them from being dragged by the main device;
- . Please clean the fragile objects and sundries (such as vase and plastic bag) to avoid resistance or slight collision of main device and resulting in damages of valuables in your house;
- . The Product is not designed for use by people with physical, spiritual, or mental disabilities (including children);
- . The main device is not a toy for children. The children and pets should be supervised and be away from the main device while it is running;
- . Do not put any object (including children and pet) on the idled or running main device; do not clean any object that is on fire (such as burning cigarette end);
- . Do not use the Product for cleaning the shag carpet (some dark color carpet may have abnormal cleaning);
- . Do not use the main device for suction of hard or sharp objects (such as decoration waste, glass and iron nail); do not use the protective cover of laser radar as handle to lift the machine;
- . Do not clean nor maintain the main device and charging base under shutdown or power-off status;
- . Do not splash any liquid into the Product (the dust box can be put back after cleaning and wiping); do not invert the main device (do not place the laser radar on the ground);
- . Please use the Product according to the manual or quick guidance. Any loss or damage due to improper use should be undertaken by the user;

## Battery and charging

- . Do not use any third-party battery, power adapter and charging base; do not use the non-rechargeable battery;
- . Do not dismantle, repair nor transform the battery or charging base without permission;
- . Do not put the charging base near the heat source (such as finned radiator);
- . Do not wipe any position of the Product with wet cloth or any liquid;
- . Do not throw the scrapped batteries randomly. You are advised to send them to professional institute for treatment;
- . Please ensure that the main device is turned off before transporting the product, and it is recommended to use the original packaging box for packaging;
- . If you do not use the product for a long time, please turn off the main device after a full charge and place it in a cool and dry place. Please charge it at least once a month to avoid battery damage;
- . Use proper tool to take out the battery. Firstly, unfasten the screws on bottom cover, then open the bottom cover of product, unplug the battery connection terminal and then take out battery from the battery box;
- . Make sure to take out battery from the device before scrapping; the device must be powered off when taking out the battery.

#### FCC Statement

This equipment has been tested and found to comply with the limits for a Class B digital device, pursuant to part 15 of the FCC Rules. These limits are designed to provide reasonable protection against harmful interference in a residential installation. This equipment generates, uses and can radiate radio frequency energy and, if not installed and used in accordance with the instructions, may cause harmful interference to radio communications. However, there is no guarantee that interference will not occur in a particular installation. If this equipment does cause harmful interference to radio or television reception, which can be determined by turning the equipment off and on, the user is encouraged to try to correct the interference by one or more of the following measures:

- Reorient or relocate the receiving antenna.
- Increase the separation between the equipment and receiver.
- Connect the equipment into an outlet on a circuit different from that to which the receiver is connected.
- Consult the dealer or an experienced radio/TV technician for help.

Caution: Any changes or modifications to this device not explicitly approved by manufacturer could void your authority to operate this equipment.

This device complies with part 15 of the FCC Rules. Operation is subject to the following two conditions: (1) This device may not cause harmful interference, and (2) this device must accept any interference received, including interference that may cause undesired operation.

#### RF Exposure Information

This equipment complies with FCC radiation exposure limits set forth for an uncontrolled environment. This equipment should be installed and operated with minimum distance 20cm between the radiator and your body.

#### ISED Statement

English: This device contains licence-exempt transmitter(s)/receiver(s) that comply with Innovation, Science and Economic Development Canada's licence-exempt RSS(s).

Operation is subject to the following two conditions:

- (1) This device may not cause interference.
- (2) This device must accept any interference, including interference that may cause undesired operation of the device.

The digital apparatus complies with Canadian CAN ICES-3 (B)/NMB-3(B).

French: Cet appareil contient des émetteurs/récepteurs exempts de licence qui sont conformes aux RSS exempts de licence d'Innovation, Sciences et Développement économique Canada.

L'exploitation est soumise aux deux conditions suivantes :

- (1) Cet appareil ne doit pas provoquer d'interférences.
  - (2) Cet appareil doit accepter toute interférence, y compris les interférences susceptibles de provoquer un fonctionnement indésirable de l'appareil.
- L'appareil numérique conforme canadien peut - 3 (b) / nmb - 3 (b).  
This device meets the exemption from the routine evaluation limits in section 2.5 of RSS 102 and compliance with RSS 102 RF exposure, users can obtain Canadian information on RF exposure and compliance.  
cet appareil est conforme à l'exemption des limites d'évaluation courante dans la section 2.5 du cnr - 102 et conforme avec rss 102 de l'exposition aux rf, les utilisateurs peuvent obtenir des données canadiennes sur l'exposition aux champs rf et la conformité.

This equipment complies with Canada radiation exposure limits set forth for an uncontrolled environment.

Cet équipement est conforme aux limites d'exposition aux rayonnements du Canada établies pour un environnement non contrôlé.

This equipment should be installed and operated with minimum distance 20cm between the radiator & your body.

Cet équipement doit être installé et utilisé à une distance minimale de 20 cm entre le radiateur et votre corps.