

---

Shenzhenshi Jinlingyu Communication Technology CO.,Ltd

(CUSTOMER):

(Item description/Specification): IPEX-ROHS

( PROVIDER PART No. ) :JLY100681

(CUSTOMER): 6620-NX021180J1

(DATE): 2021-11-5

(compile)	(auditing)	(approval)

(inspect)	(auditing)	(approval)

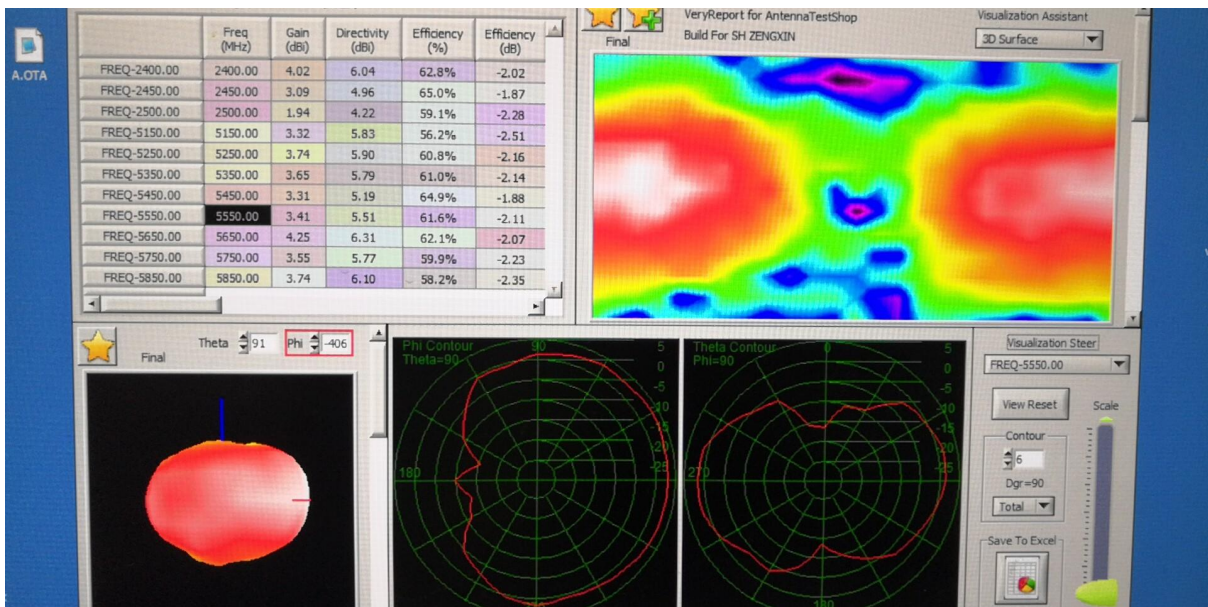
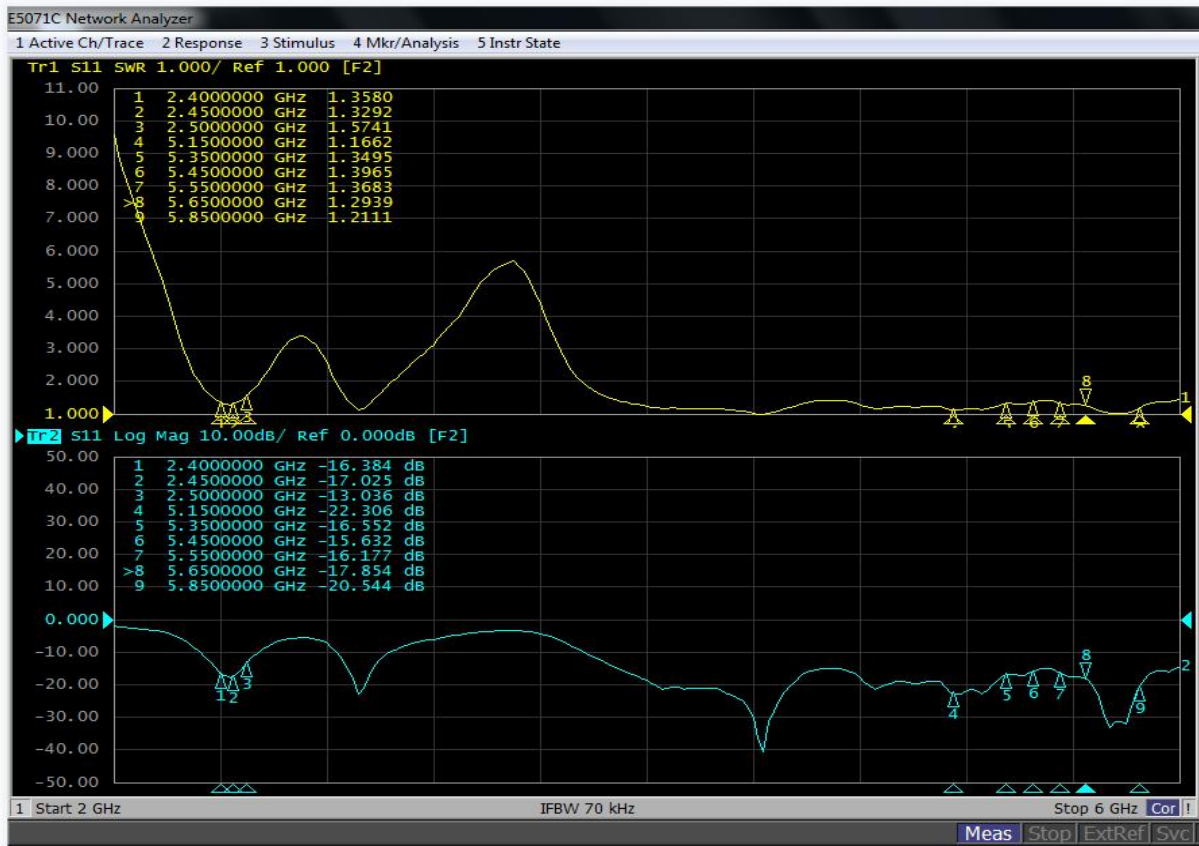
---

**(Performance index)**

Frequency range	2400-2483MHZ 5000-5850MHZ
Polarization	Linear
Gain (dBi)	3
Impedance ( $\Omega$ )	50
Max Power (MW)	50
VSWR	$\leq 1.8$
Efficiency	$\geq 50\%$

Connector	一代 IPEX
Height (mm)	41.6×16.9mm
Material	FPC
Operation Temperature (°C)	-40~85
Humidity (%)	5~95
Cable(mm)	OD:1.13 Grey
Installation mode	3M
Packing method	200PCS

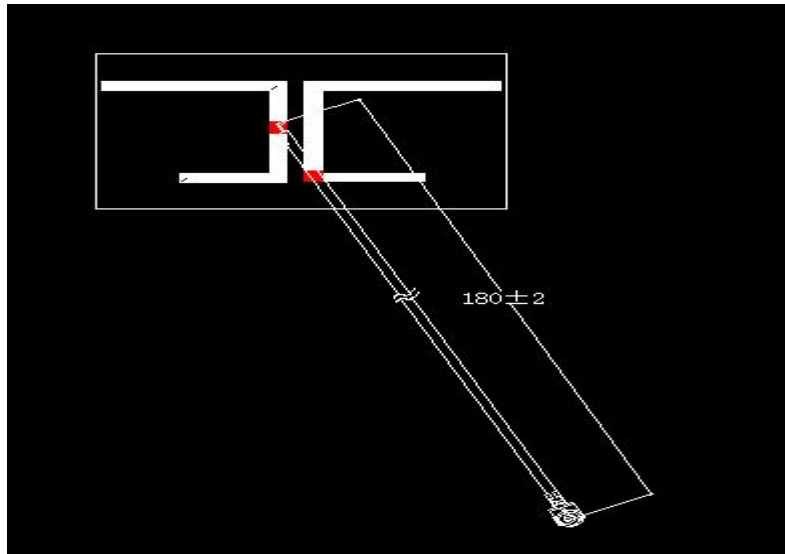
# VSWR



(Product outline drawing)

Tel:86-755-84560885 Fax:86-755-84560885

Addr:



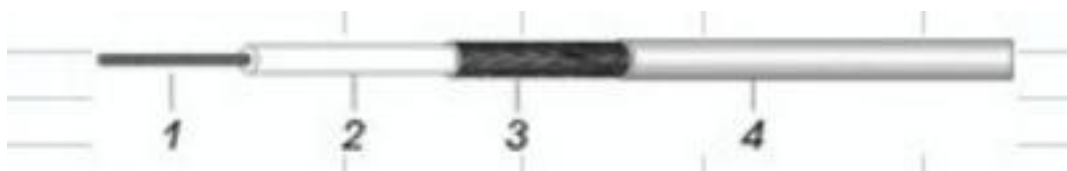
FPC, 灰色单银 1.13 线长 180MM 带 IPEX 端子



**(enclosure):**

**1.**

ITEM/		Unit	Details/
Inner Conductor	Material/	-	Silver Plated copper
	Composition/	No/mm	AWG32or7/0.08 ± 0.008
	Nominal O.D./	mm	0.15
Dielectric Core	Material/	-	Extruded FEP
	Nominal O.D./	mm	0.68 ± 0.05
	Color/	-	Natural
Outer Conductor	Material/	-	Tin-coated Copper Wire
	Composition/	-	AWG44 X 5ends X 8 carriers
	Nominal O.D. /	mm	16X 4/0.05 ± 0.008
Outer Jacket	Material/	-	Extruded FEP
	Outer diameter/	mm	1.13 ± 0.05
	Color/	-	Grey



IPEX(ipex structure diagram)

Tel:86-755-84560885 Fax:86-755-84560885

Addr: