



Shenzhen Yunding Communication Electronics Co.,Ltd.

# PCB onboard antenna -2.4G antenna test report

WUSHUYI  
2023-08-07

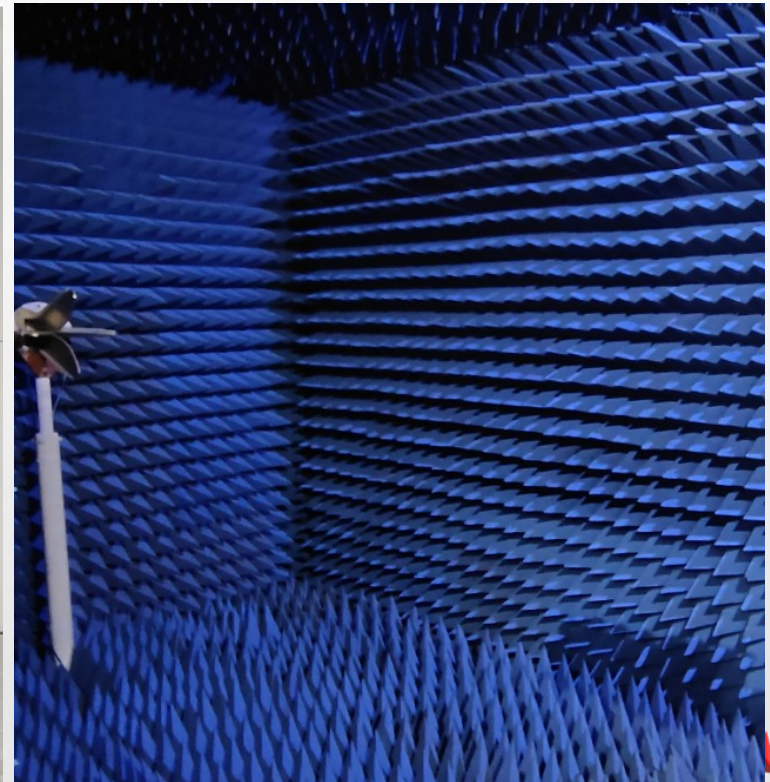
Shenzhen Yunding Communication Electronics Co.,Ltd.  
Address: 3015, 3rd Floor, Jinch Center, Hangcheng  
Street, Baoan District, Shenzhen





Shenzhen Yunding Communication Electronics Co.,Ltd.

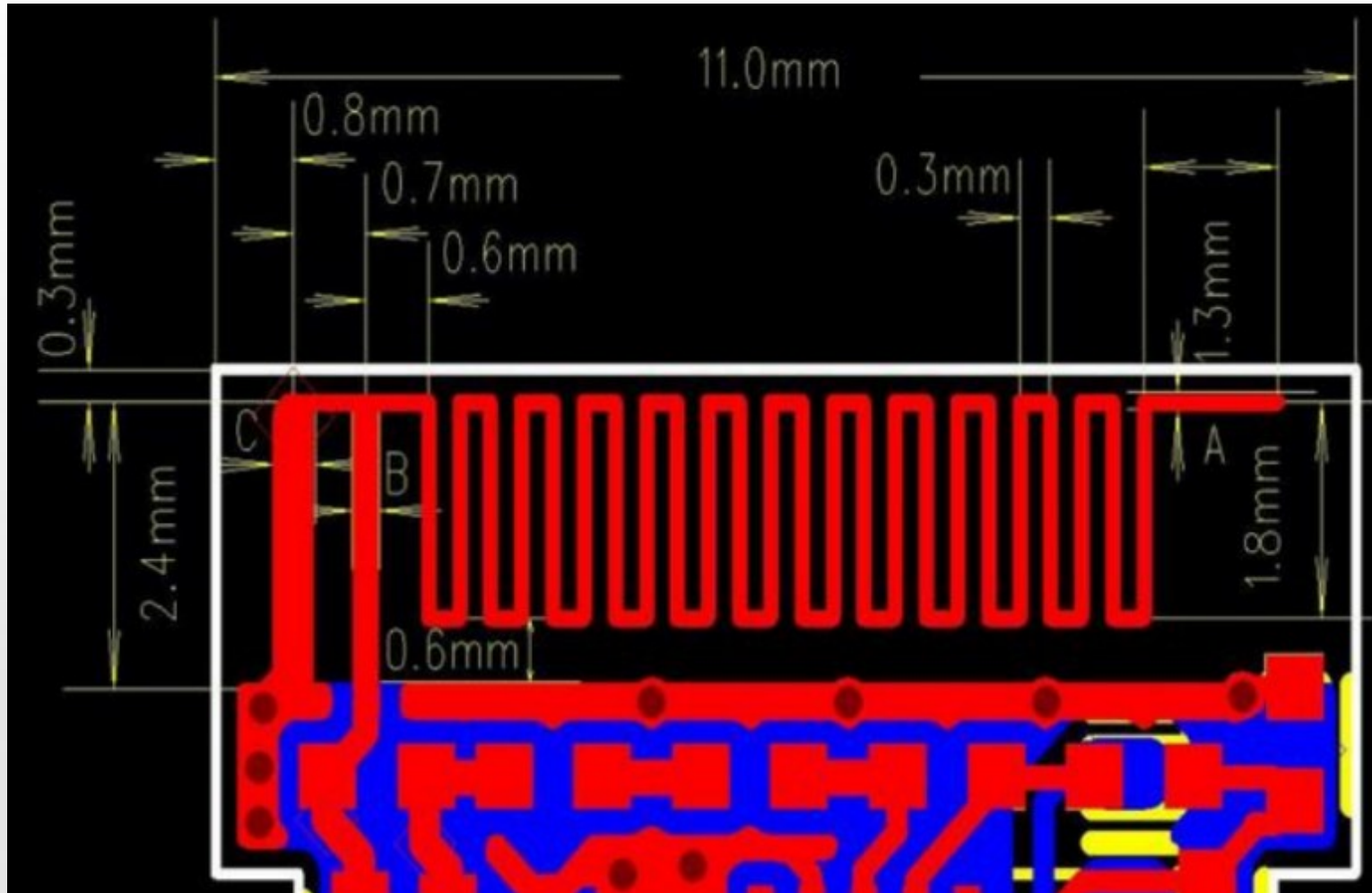
## 一、 Test environment





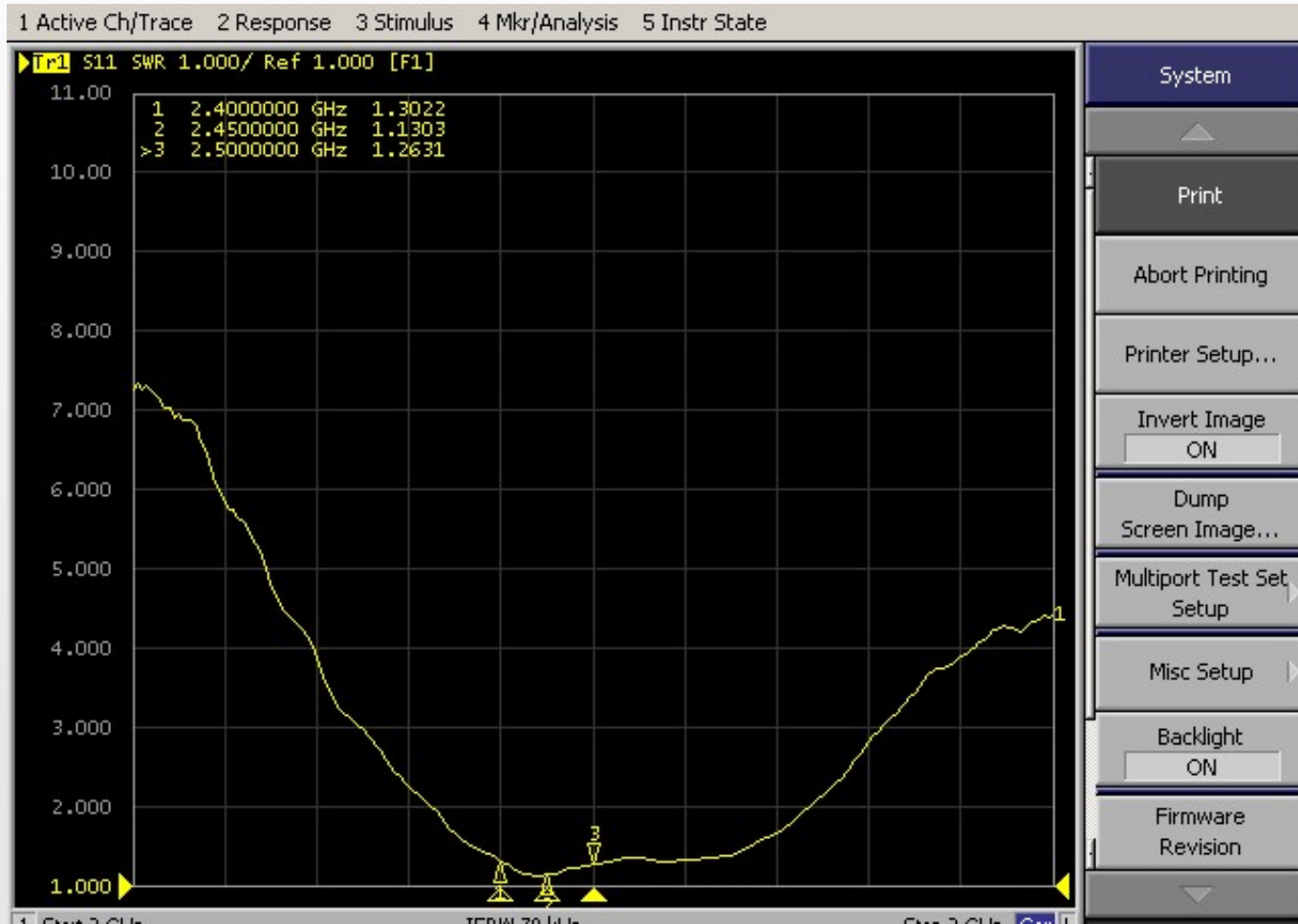
Shenzhen Yunding Communication Electronics Co.,Ltd.

## 二、 Antenna picture





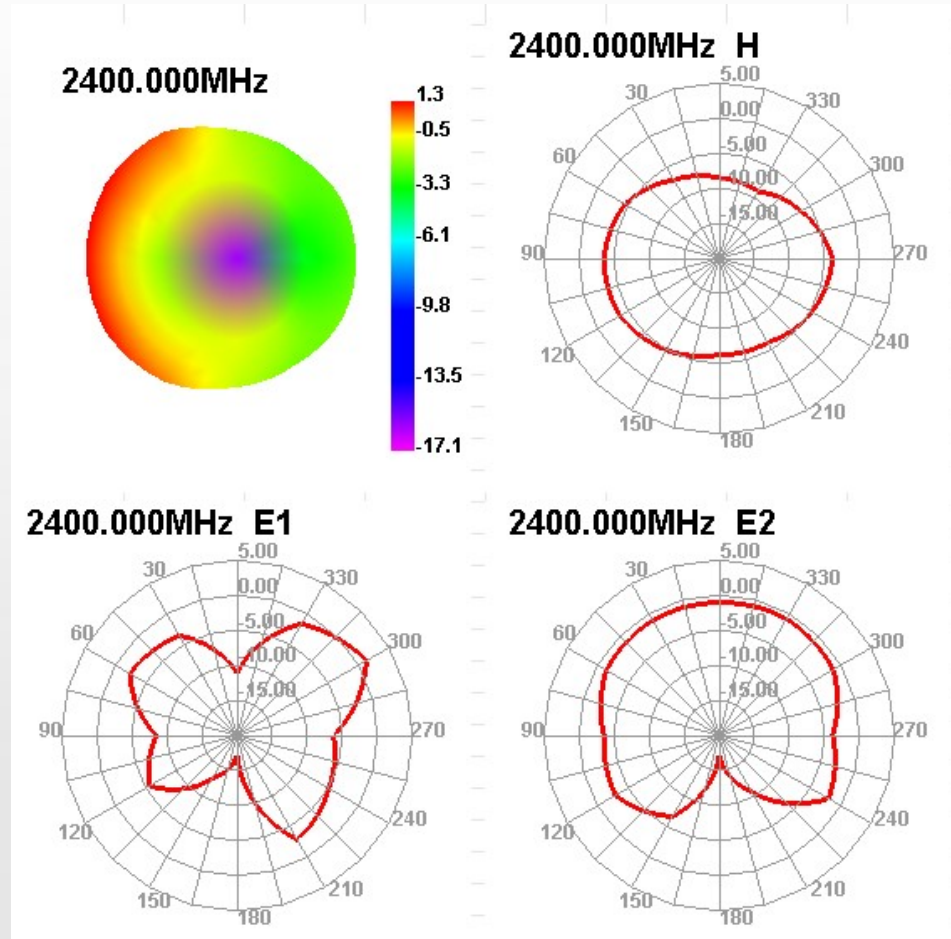
### ☰ Antenna Performance -S11-SWR





### 四、OTA test data efficiency - Gain

Passive Test For WIFI			
Freq (MHz)	Effi (%)	Effi (dB)	Gain (dBi)
2400	49.22	-3.08	1.3
2410	49.19	-3.08	1.23
2420	48.97	-3.1	1.12
2430	48	-3.19	1
2440	49.81	-3.03	1.21
2450	51.97	-2.84	1.44
2460	51.39	-2.89	1.4
2470	51.84	-2.85	1.43
2480	52.99	-2.76	1.48
2490	53.53	-2.71	1.5
2500	50.61	-2.96	1.1





# Shenzhen Yunding Communication Electronics Co.,Ltd.

## Test instrument list

Instrument name	Specificati on name	Parameter test	Test result	Remark
Network analyzer	5071B	S11-SWR	$\leq 2.0$	
Network analyzer	8753ES	Gain	1.5	
OTA laboratory	4-3-3			





Shenzhen Yunding Communication Electronics Co.,Ltd.

Thanks!

