

## Product specification

Customer name	
Product name	433MHz PCB Antenna
Product item	
Sample delivery date	

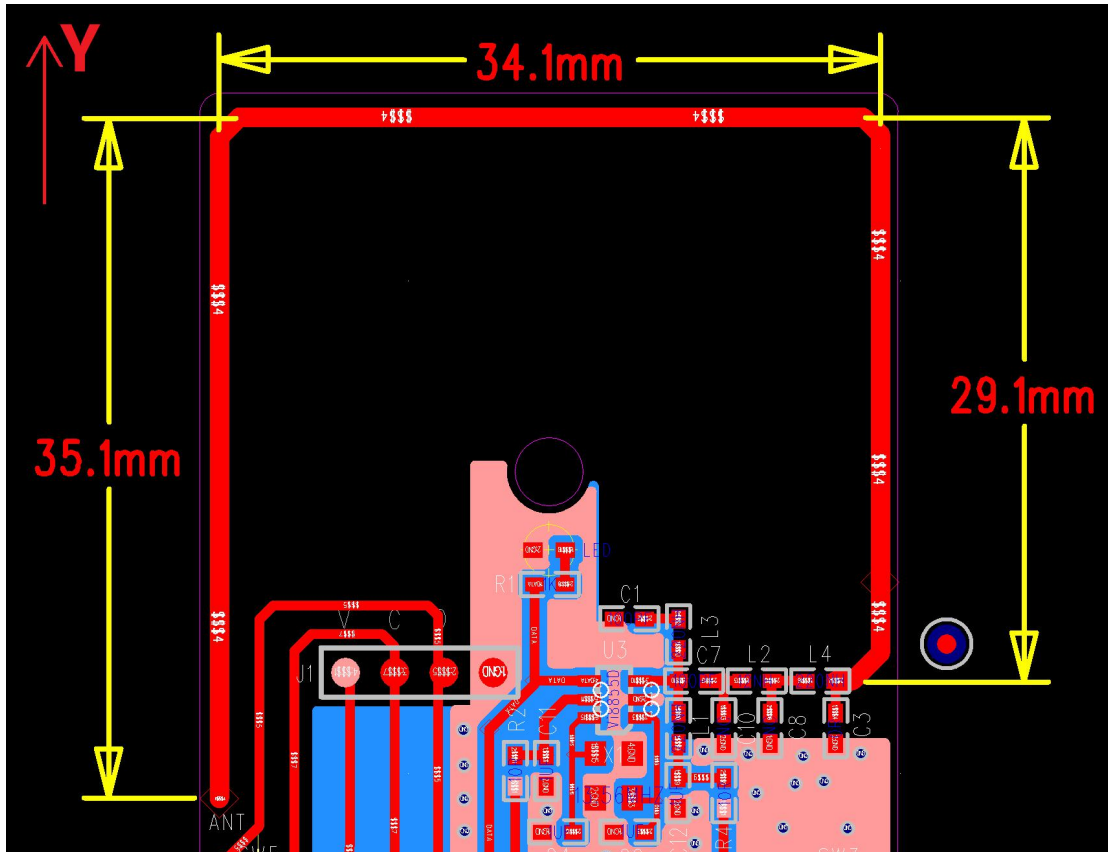
## Manufacturer Rexense

Antenna model Rex PCB\_14443

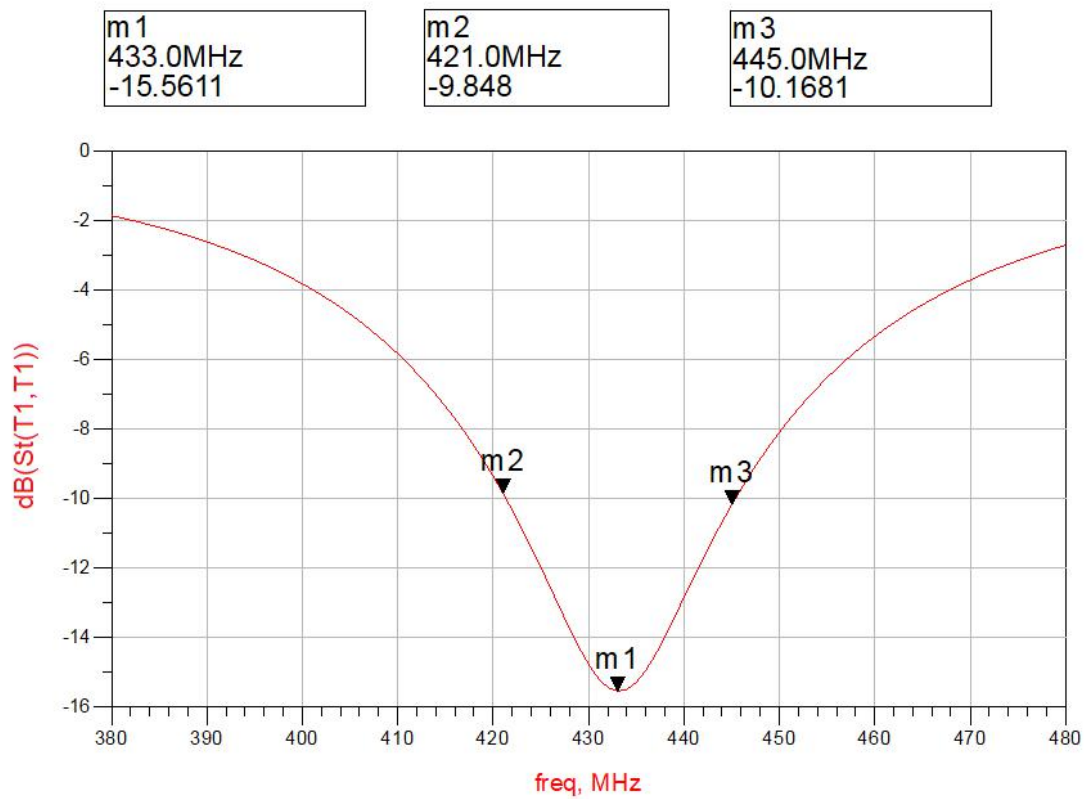
### 1. Technical indicators of products

Frequency Range(MHz)	421-445
Band Width(MHz)	24
Impedance( $\Omega$ )	50
VSWR	1.91MAX
Return Loss ( dB )	-15.6
Peak Gain(dBi)	1.78
Polarization	Linear Vertical
Antenna Material	PCB
Operating Temp ( $^{\circ}\text{C}$ )	-30~70
Storage Temp ( $^{\circ}\text{C}$ )	-40~85

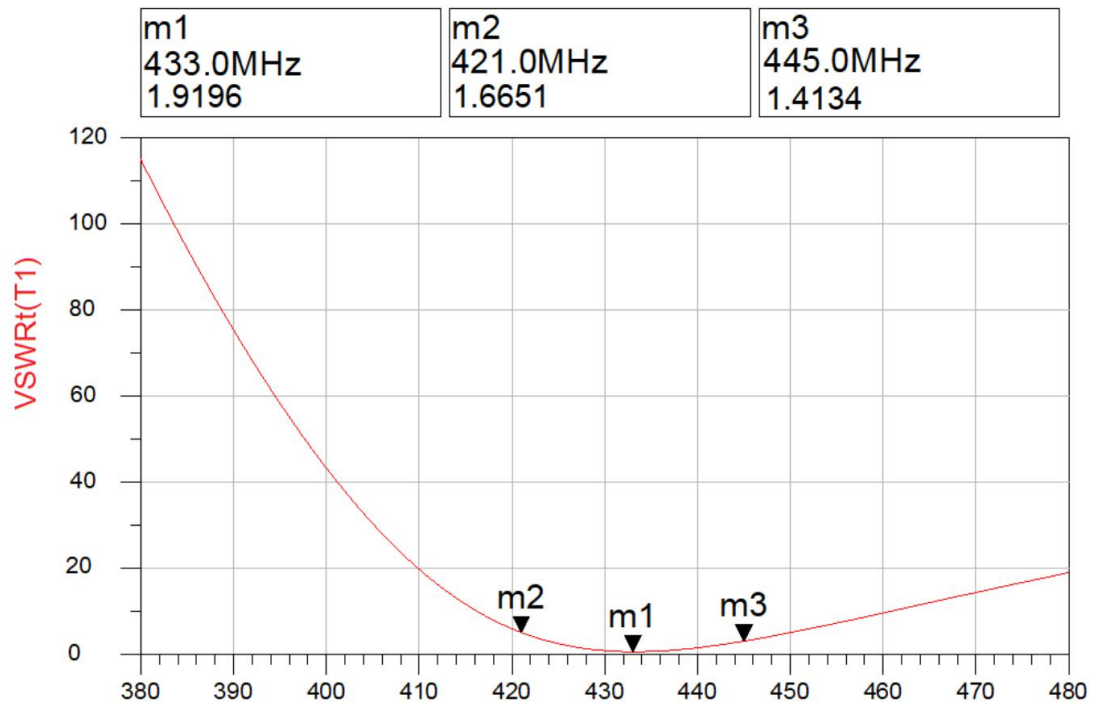
### 2. Product picture



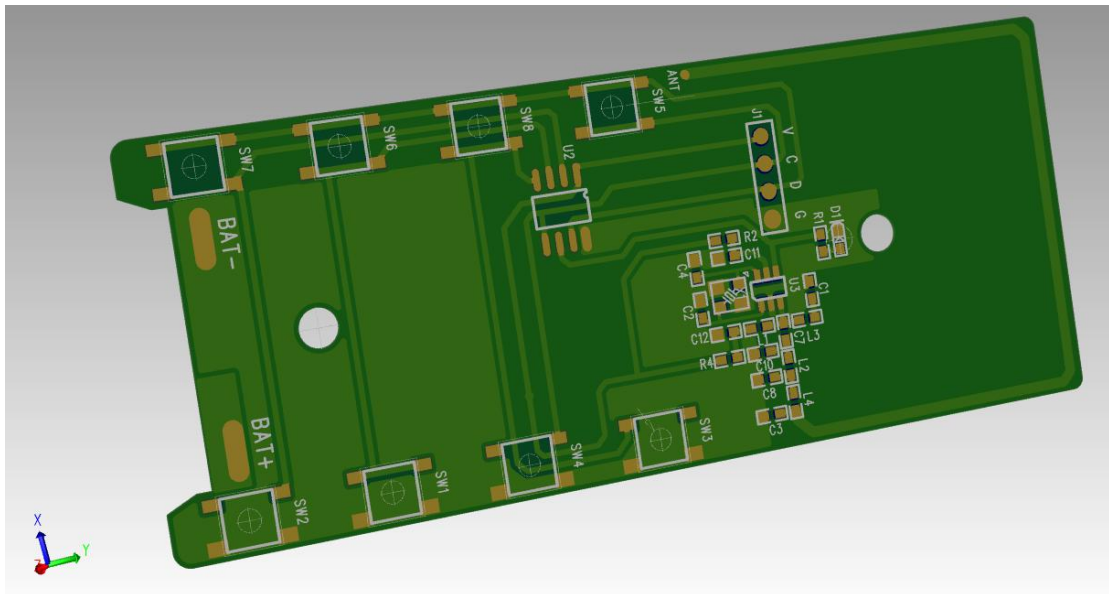
### 3. Return Loss



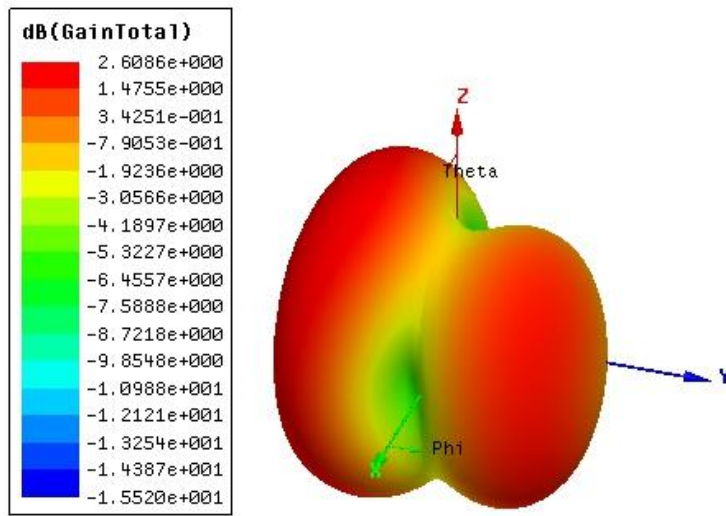
#### 4. VSWR



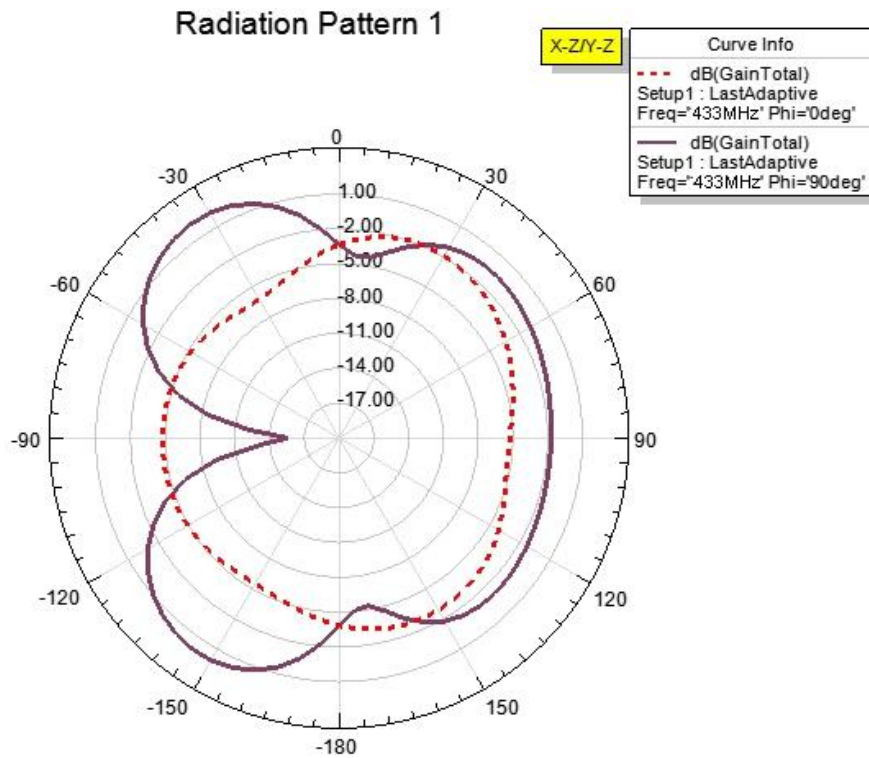
#### 5. Three-dimensional coordinates



#### 6. 3D gain pattern



## 7. E, h plan



# Radiation Pattern 2

X-Y	Curve Info
	— dB(GainTotal)
	Setup1 : LastAdaptive
	Freq='433MHz' Theta='90deg'

