

N35 operating instructions

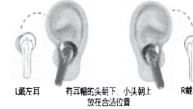


Thank you for choosing the bluetooth headphones produced by our company, in order to enable you to use this product easily and happily, Please read this manual carefully before use

catalogue

- 一. How to Wear.....
- 二. How to Pair.....
- 三. How to Operation.....
- 四. How to Charging.....
- 五. Troubleshooting.....
- 六. Technical parameters.....
- 七. Warranty Card.....
- 八. Packing List.....

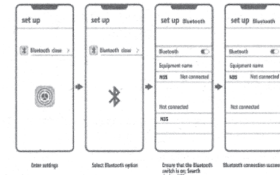
一. How to Wear



Put the "L" one in the left ear and put the "R" one in the right ear, then adjust the position until you feel comfortable.

二. How to Pair

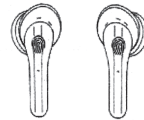
- Power On:** Take the earbuds from the charger case then it will connect to the connected device automatically (Or long press the earbuds 5 minutes)
- Power Off:** Put the earbuds back to the charger case and turn the bluetooth off on your phone. (Or long press the earbuds 5 minutes)
- Pairing connection:** when the headset is picked up in the charging box, it will start automatically, and the traffic lights of the two headphones will turn on. It will automatically enter the pairing state for the pair of ears. After pairing, only one headset red and blue light is flashing. Turn on the blue device of the mobile phone to enter the search (display N35) and click Connect, as shown in the figure below
- Automatically Pairing:** If the earbuds and phone paired before, just turn the bluetooth on your phone and take the earbuds out of the charger case, they will pair with automatically.



Note: Charging the charger and earbuds before use, keeping there are no obstacles between the earbuds and the phone or it will be disconnect between them.

三. How to Operation

- Answer:** Tap the earbud Once when is ringing.
- Reject:** Tap the earbud Twice when is ringing.
- Play/Pause Music:** Tap any earbud Once when is playing.
- Skip Songs:** Tap the left earbud Twice to play Prev song, Tap the right earbud Twice to play Next song.
- Volume Control:** Tap the left earbud 3 times to add volume, Tap the right earbud 3 times to decrease volume.
- Both earbuds can be used separately.
- Touch four times to switch between game mode and normal mode.
- Long press Sin for 1.5 seconds.



四. How to Charging

- The Earbuds Battery:** When the earbuds battery less than 10% the green light will blink twice and voice prompt low battery, each 2 minutes repeat once. Please charging soon.
- Seat charge:** when the charge of the charging box is less than 10%, the green light flashes quickly, please charge it in time.
- Headset charging state:** when the headset is put back into the charging box after use, the charging box will automatically detect the power of the headset. For automatic charging, the charging indicator (green) flashes, the green light of the headset flashes during charging, and the red light after charging. Keep on for 20 seconds and turn off the light.
- Charging status:** when the charging box is low, the blue light of charging box will flash. When the charging box is full, the red light will be on for 20 seconds and will be automatically closed.

五. Troubleshooting

- Can not power on or shut: Put the earbuds back to the charger case and charging both.
- Can't Pairing the earbuds with your device: Go to your smartphone's Bluetooth menu and delete all saved devices from the list by clicking "Forget this device". Turn Bluetooth off then turn on on your smartphone. Put the earbuds into the charger case 1 minutes then take them out. Retry to pair as the first time.
- Smartphone is connected to earbuds, but music can't be sound: Please check if the smartphone and earbuds is paired with each other. Please check if the Volume is shut off or too low.
- No sound on the left and right sides: after successful connection between the headset and the mobile phone, there is sound while there is no sound. (Note: these two headphones are not paired successfully.) 1. Clear the pairing name on the mobile phone. 2. Put the headphones back into the charging box, reset and take them out again. Wait until the two headphones flash green and enter the opposite ear Pairing status. after successful ear pairing, only one host will turn on the mobile phone when the green light flashes. Search pairing connection.

六. Technical Parameters

project	Specifications and parameters
Bluetooth Version	V5.3
Frequency Range	2.402GHz~2.480GHz ISM Band
Wireless transmission standard	CLASS 2
Signal Range	Appr. 10-15 Meters
Frequency Response	20HZ-20KHZ
SNR	95dB
Indicator	LED indication, Voice prompt
Applicable Products	All Smartphones, Tablet with Bluetooth
Battery	Rechargeable li-ion batteries 3.7V/55ma, 3.7V/300
Charger	DC 5V-500A Input
Charging Time	Appr. 1-2Hours
Working Time	Appr. 7-8 Hours
Stand-by Time	Appr. 720 Hours

七. Warranty Card

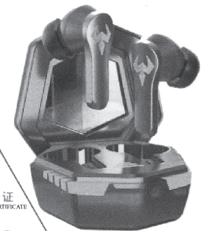
Please keep the warranty card properly

Model	
DOS	
Buy from	
Phone number	

八. Packing list

name	number
Earbuds	2
Charger	1
User Manual	1
Charging Cable	1
QC Pass Card	1
Silicone Ear Tips	Small and medium-sized

N35使用说明书

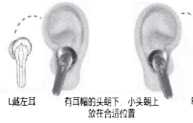


感谢您选用本公司出品的蓝牙耳机, 为了您能轻松愉快的使用本产品, 使用前请先仔细阅读本说明书

目录

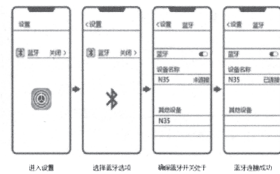
- 一. 产品配戴示意图.....
- 二. 配对连接方法及操作说明.....
- 三. 功能操作说明.....
- 四. 电池电量充放电指示.....
- 五. 常见问题处理.....
- 六. 功能参数.....
- 七. 保修卡.....
- 八. 包装清单.....

一. 产品配戴示意图



二. 配对连接方法及操作说明

- 开机操作: 耳机在关机的状态下, 在充电盒拿起自动开机自动回连已连接过的手机. (在耳机关机的状态下可以长按耳机5秒可开机)
- 关机操作: 耳机在开机的状态下, 放回充电盒会自动关机并断开手机蓝牙的连接. (在耳机关机的状态下可以长按耳机5秒可关机)
- 配对连接: 耳机在充电盒拿起自动开机, 两个耳机指示灯出现红绿灯交替闪烁自动进入对耳配对状态. 配对完成后只有一个耳机红灯在闪烁的时候, 打开手机蓝牙设备进入搜索. (显示N35) 点击连接. 如下图所示
- 自动连接: 手机蓝牙设备与蓝牙耳机配对使用过的, 在手机蓝牙设备打开的状态下, 耳机从充电盒拿出来会自动开机自动连接蓝牙设备.



温馨提示:

首次使用或长时间不用, 请务必给充电和耳机充电后再使用, 请保持在10米内无阻碍的有效环境使用, 否则可能出现卡顿和断连.

三. 功能操作说明(示意图)

- 接听来电: 来电时, 触摸一次接听电话.
- 拒接来电: 来电时, 触摸二次拒接电话.
- 音乐播放: 在播放状态下轻触一下 (左右耳机) 都可以. 暂停/播放音乐.
- 上/下曲: 触摸二下/左耳/播放上一曲, 触摸二下 (右耳); 播放下一曲.
- 音量: (左耳) 触摸三下音量加, (右耳) 触摸三下音量减.
- 主屏切换: 左右耳机可以随时切换独立使用.
- 触摸四次切换游戏模式和普通模式.
- 长按1.5秒语音Siri.



四. 电池电量, 充放电指示

- 耳机电量: 当耳机电量低于10%, 耳机每隔一段时间会快闪两次同时耳机发出低电量提示音, 每两分钟左右提示一次, 请及时充电.
- 座充电量: 当充电盒电量低于10%绿灯闪烁, 请及时充电.
- 耳机充电状态: 耳机使用完放回充电盒的时候, 充电盒会自动检测耳机电量进行自动充电. 充电指示灯绿色闪亮, 充电时耳机红灯闪亮, 充电完成后红灯长亮2秒灭灯.
- 座充充电状态: 充电盒电量时, 给充电盒 充电红灯闪亮, 充满电时红灯长亮20秒自动关闭.

五. 常见问题处理

- 不开机或自动关机: 检查电池电量或无电, 请给耳机充电.
- 不连接: 保持手机设备打开和蓝牙耳机已配对成功, 或清除已配对过的设备名称重新搜索连接.
- 耳机无声: 检查是否与手机连接成功或音量是否调到最小和关闭.
- 左右单边无声: 耳机与手机连接成功后一边有声音一边无声音. (注: 双耳两个耳罩, 没有对耳罩对应成功.) 1. 把手上的控制名称清除. 2. 把耳机放回充电盒复位重新拿出来等待两个耳机出现绿灯闪烁进入对耳配对状态. 对耳配对成功后只有一个主机出现绿灯闪烁的时候再打开手机进行搜索配对连接.

六. 功能参数

项目	规格及参数
蓝牙版本	V5.3
频率范围	2.402GHz~2.480GHz ISM Band
无线发射标准	CLASS 2
信号距离	约10-15米
频率响应	20HZ-20KHZ
信噪比	95dB
状态指示	LED指示、语音提示
适用配对产品	有蓝牙功能的手机、电脑等
电池	可充电锂离子电池 3.7V/55ma, 3.7V/300
移动快充	输入DC 5V-500A的充电器
充电时间	1-2小时左右
连续播放/通话时间	约7-8小时左右
待机时间 (待机待电)	约720小时左右

七. 保修卡

保修卡凭证请妥善保管

产品型号	
出售日期	
购买商店	
售后电话	

八. 包装清单

名称	数量
耳机	2
充电盒	1
说明书	1
充电线	1
合格证	1
硅胶耳帽	大 中 小

FCC statement

This device complies with Part 15 of the FCC Rules. Operation is subject to the following two conditions: (1) this device may not cause harmful interference, and (2) this device must accept any interference received, including interference that may cause undesired operation. Changes or modifications to this unit not expressly approved by the party responsible for compliance could void the user's authority to operate the equipment.

NOTE: This equipment has been tested and found to comply with the limits for a Class B digital device, pursuant to Part 15 of the FCC Rules. These limits are designed to provide reasonable protection against harmful interference in a residential installation. This equipment generates, uses and can radiate radio frequency energy and, if not installed and used in accordance with the instructions, may cause harmful interference to radio communications. However, there is no guarantee that interference will not occur in a particular installation.

If this equipment does cause harmful interference to radio or television reception, which can be determined by turning the equipment off and on, the user is encouraged to try to correct the interference by one or more of the following measures:

- Reorient or relocate the receiving antenna.
- Increase the separation between the equipment and receiver.
- Connect the equipment into an outlet on a circuit different from that to which the receiver is connected.
- Consult the dealer or an experienced radio/TV technician for help.

This device and its antenna(s) must not be co-located or operation in conjunction with any other antenna or transmitter.

Radiation Exposure Statement

The device has been evaluated to meet general RF exposure requirement in portable exposure condition without restriction.