

亦轩 <东莞> 电子科技有限公司

YIXUAN DongGuan DianZI KeJi YouXianGongSi

客户名称: 深圳市轩辕星电子科技有限公司

机型: S29

天线类型: WIFI 天线

天线频段: 2.4G

材质要求: PCB 板载

颜色: 黑色

天线料号: PCB 板载天线 制作日期: 2024-08-15

Version: A

承认签章			
Admit that signature			
亦轩 承认 Confirmation Signature		客户 承认 Customer Approved	
承辦人 Responsible	张立	承辦人 Responsible	
品质 QC	雷桃	主管 Chief	
核准 Approve	申中秋	核准 Approve	
日期 Date	2024/8/15	日期 Date	

目录

广东省东莞市长安镇涌头新围南路五巷二号 8 楼
电话: 13058053185

亦轩 <东莞> 电子科技有限公司

YIXUAN DongGuan DianZI KeJi YouXianGongSi

封面概述.....1

测试环境.....2

整机调试说明.....3

WIFI天线2.4G 效率：4

结构图.....5

亦轩 <东莞> 电子科技有限公司

YIXUAN DongGuan DianZI KeJi YouXianGongSi

一：概述

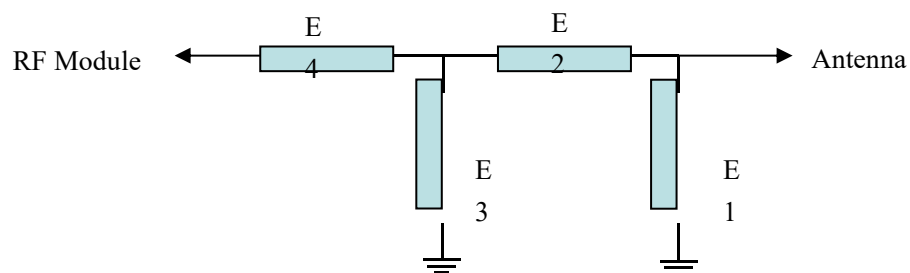
- This approval sheet supports for MID project. PCB antennas include in this project. This report is for the performance of WLAN ,4G antenna.
- Antenna shape size: Meet the requirement of MID
- Antenna band: 2400MHz~2500MHz,
- Antenna material: Antenna material meet the requirement of MID
- Antenna performance meet the spec below:

Description	2.4GHz~2.5GHz	Units
VSWR	≤ 2.0	
Average Antenna Gain	≥ 1.5	dB
Antenna Efficiency	≥ 40	%
Feed Impedance	50 ohms	
Operating Temperature	-40 to +85 deg C	
Polarization / Azimuth	Linear / Omni-directional	

● Mechanical Information

Mechanical Dimension	
Cable Length	60mm/Black
Description	WLAN+4G antenna
Material	PCB
Coaxial Cable	50Ohm/O.D.1.78mm
Environmental	
Operation Temperature	-40 to +85 deg C
Storage Temperature	-40 to +85 deg C

匹配电路图



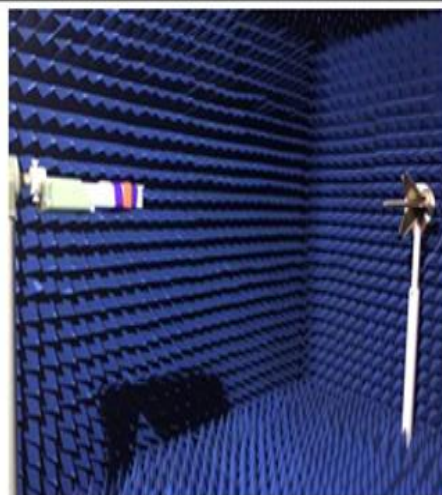
广东省东莞市长安镇涌头新围南路五巷二号 8 楼
电话：13058053185

亦轩 <东莞> 电子科技有限公司

YIXUAN DongGuan DianZI KeJi YouXianGongSi

二. 测试环境

	测试项目	设备
1. S参数 (S-parameter)	1. 回波损耗 (Return Loss) 2. 电压驻波比 (VSWR)	网络分析仪: Agilent E5071B HP 8753D
2. 有源测试 (Active)	1. 发射功率 (TRP) 2. 接收灵敏度 (TIS) 3. 频率误差 4. 屏灭、屏亮	1. 暗室: ETS 7x4x3 m (3D) Chamber ETS 5x3x3 m (3D) Chamber 2. 综合测试仪: Agilent 8960 E5515B × 2 StarPoint SP6011
3. 无源测试 (Passive)	1. 天线增益 (Gain) 2. 天线效率 (Efficiency)	1. 暗室: ETS 7x4x3 m (3D) Chamber ETS 5x3x3 m (3D) Chamber 2. 网络分析仪: Agilent E5071B HP 8753D

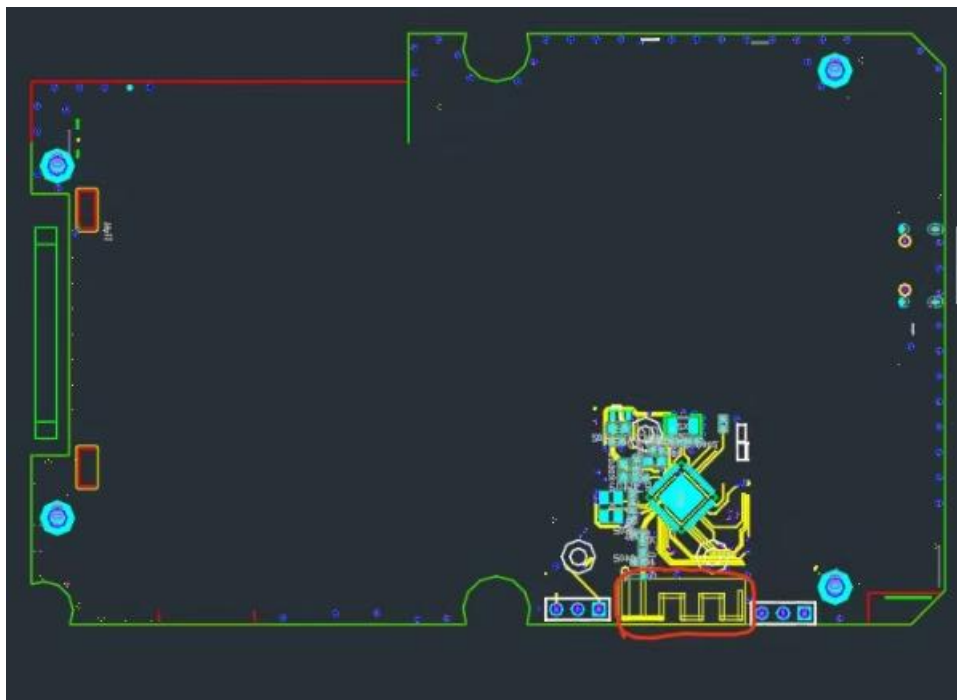
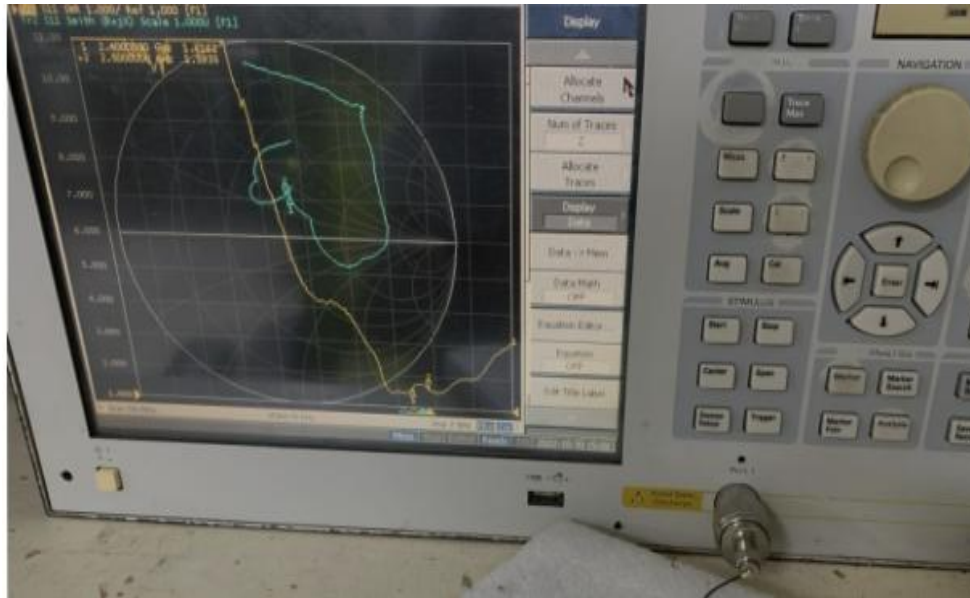


亦轩 <东莞> 电子科技有限公司

YIXUAN DongGuan DianZI KeJi YouXianGongSi

三.整机调试说明

1. 案室实测场景



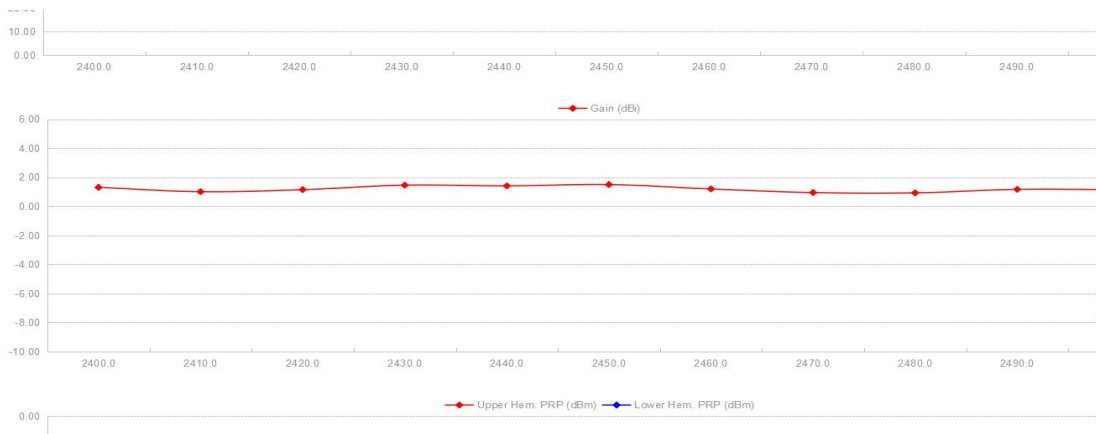
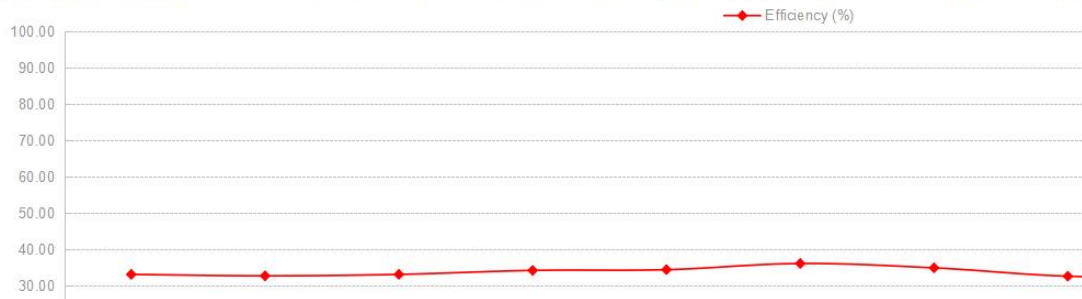
广东省东莞市长安镇涌头新围南路五巷二号 8 楼
电话：13058053185

亦轩 <东莞> 电子科技有限公司

YIXUAN DongGuan DianZI KeJi YouXianGongSi

四. WIFI天线2.4G 效率:

FEITUKEJI											
Frequency ID	1	2	3	4	5	6	7	8	9	10	11
Frequency (MHz)	2400.0	2410.0	2420.0	2430.0	2440.0	2450.0	2460.0	2470.0	2480.0	2490.0	2500.0
Point Values											
Ant. Port Input Pwr. (dBm)	0.00	0.00	0.00	0.00	0.00	0.00	0.00	0.00	0.00	0.00	0.00
Tot. Rad. Pwr. (dBm)	-4.81	-4.86	-4.80	-4.66	-4.64	-4.43	-4.57	-4.87	-4.88	-4.78	-4.81
Peak EIRP (dBm)	1.32	1.02	1.16	1.47	1.42	1.51	1.21	0.96	0.94	1.18	1.16
Directivity (dBi)	6.12	5.88	5.96	6.13	6.06	5.93	5.78	5.82	5.82	5.95	5.97
Efficiency (dB)	-4.81	-4.86	-4.80	-4.66	-4.64	-4.43	-4.57	-4.87	-4.88	-4.78	-4.81
Efficiency (%)	33.10	32.70	33.10	34.20	34.40	36.10	34.90	32.60	32.50	33.30	33.00
Gain (dBi)	1.32	1.02	1.16	1.47	1.42	1.51	1.21	0.96	0.94	1.18	1.16
NHPRP ±Pi/4 (dBm)	-5.19	-5.22	-5.14	-4.99	-4.97	-4.76	-4.91	-5.21	-5.23	-5.14	-5.18
NHPRP ±Pi/6 (dBm)	-6.00	-6.03	-5.96	-5.80	-5.77	-5.57	-5.72	-6.03	-6.04	-5.93	-5.97
NHPRP ±Pi/8 (dBm)	-6.76	-6.80	-6.72	-6.55	-6.52	-6.32	-6.48	-6.79	-6.79	-6.66	-6.69
Upper Hem. PRP (dBm)	-8.43	-8.38	-8.27	-8.10	-8.03	-7.84	-8.04	-8.44	-8.54	-8.46	-8.47
Lower Hem. PRP (dBm)	-7.27	-7.41	-7.39	-7.28	-7.30	-7.07	-7.16	-7.37	-7.33	-7.21	-7.25
Upper Hem. PRP (%)	14.34	14.52	14.89	15.50	15.75	16.46	15.71	14.31	14.01	14.26	14.22
Lower Hem. PRP (%)	18.73	18.15	18.23	18.71	18.63	19.62	19.22	18.31	18.49	19.03	18.83



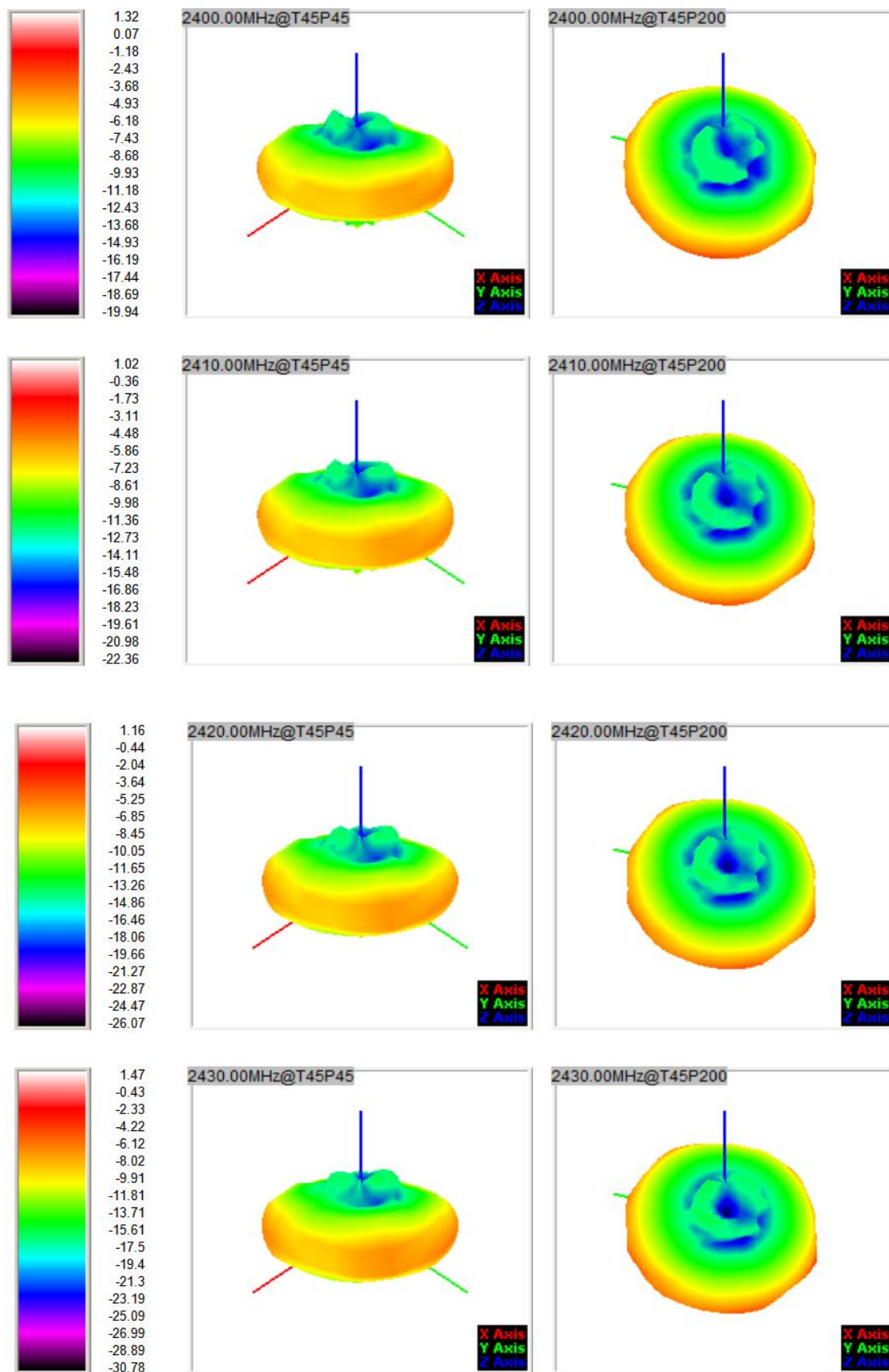
亦轩 <东莞> 电子科技有限公司

YIXUAN DongGuan DianZI KeJi YouXianGongSi



亦轩 <东莞> 电子科技有限公司

YIXUAN DongGuan DianZI KeJi YouXianGongSi

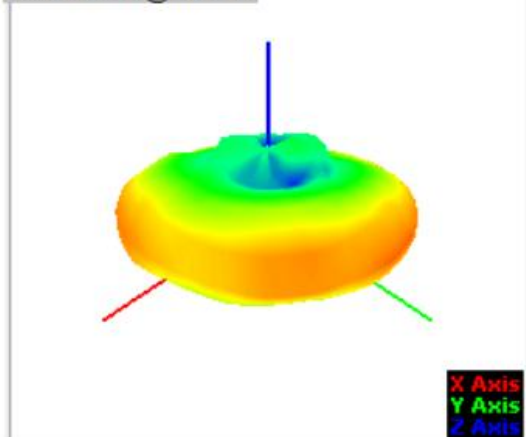


广东省东莞市长安镇涌头新围南路五巷二号 8 楼
电话：13058053185

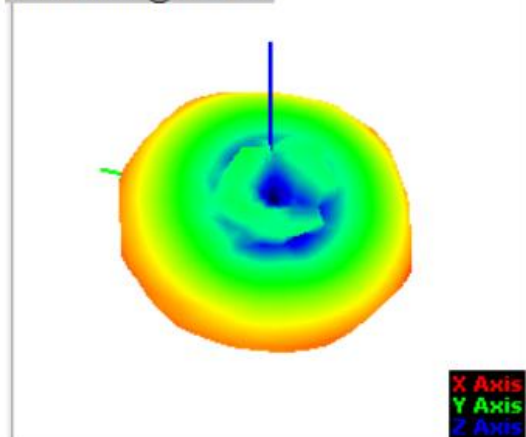
亦轩 <东莞> 电子科技有限公司

YIXUAN DongGuan DianZI KeJi YouXianGongSi

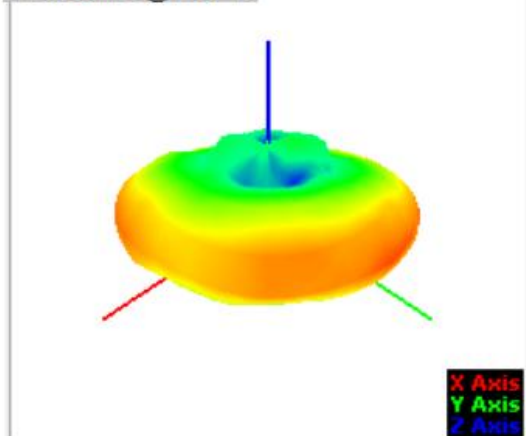
2440.00MHz@T45P45



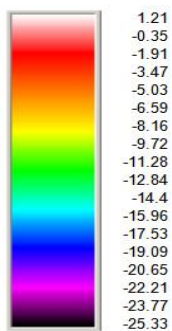
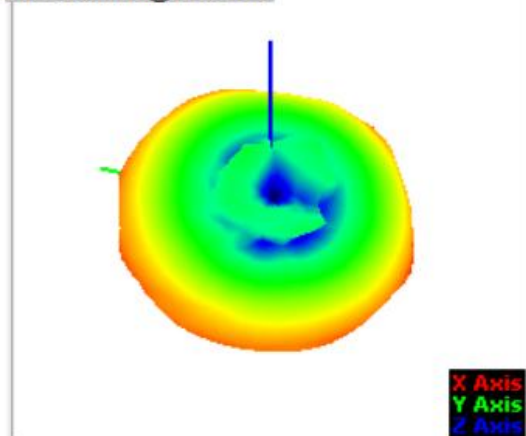
2440.00MHz@T45P200



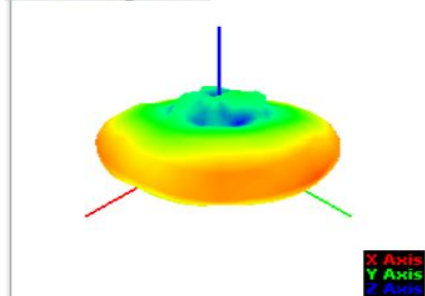
2450.00MHz@T45P45



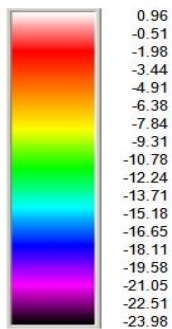
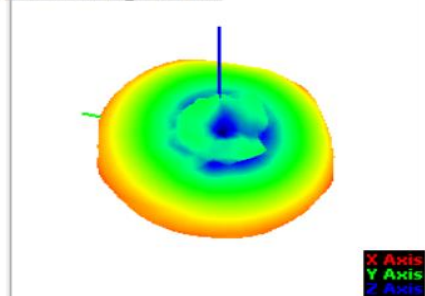
2450.00MHz@T45P200



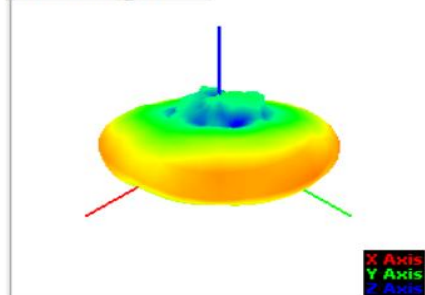
2460.00MHz@T45P45



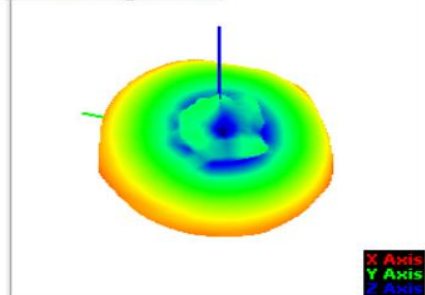
2460.00MHz@T45P200



2470.00MHz@T45P45

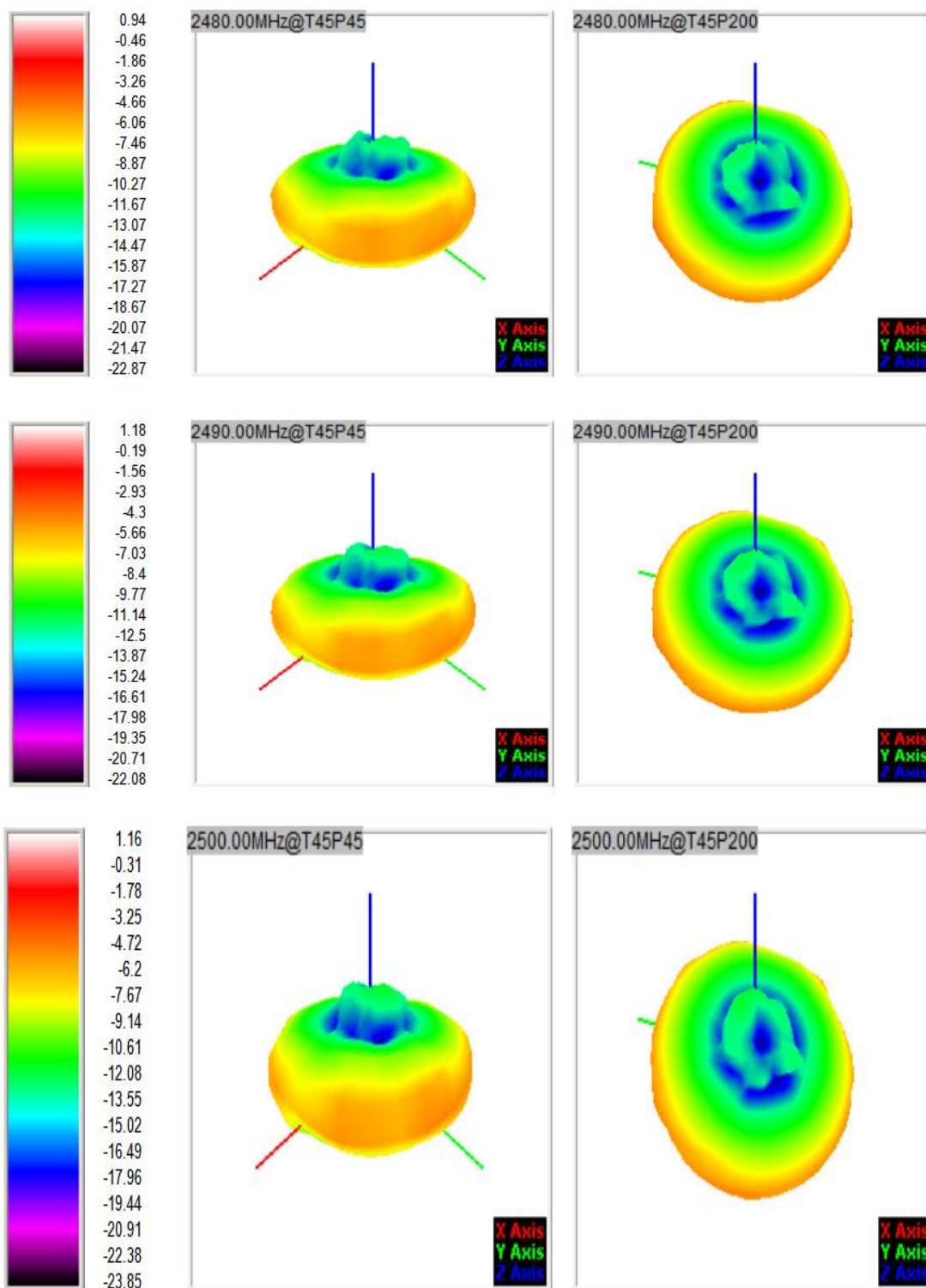


2470.00MHz@T45P200



亦轩 <东莞> 电子科技有限公司

YIXUAN DongGuan DianZI KeJi YouXianGongSi



亦轩 <东莞> 电子科技有限公司

YIXUAN DongGuan DianZI KeJi YouXianGongSi

五：结构图

