

UNPACK CONTENTS

Remove the smartwatch and charging cable from its packaging.



FULLY CHARGE THE SMARTWATCH

Before initiating the setup process, ensure that your smartwatch is fully charged.

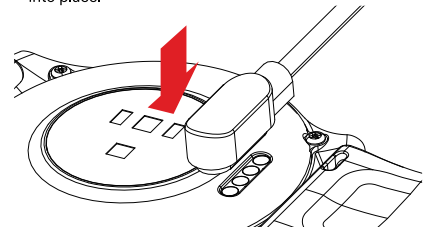


Note: Charging may take up to 2 hours.

CHARGING THE SMARTWATCH

Align the gold pins on the charging cable with the gold contacts on the back of the smartwatch; they will magnetically connect. If you encounter resistance, flip the cable around.

The magnetic charging cable will effortlessly latch into place.



CHARGING THE SMARTWATCH (CONT.)

Plug the charging cable into a UL-certified wall charger or a computer USB port.

Note: Avoid using fast chargers.

Once fully plugged in, the smartwatch screen will display "charging."

DOWNLOAD THE ARMITRON CONNECT APP

Scan the QR code using your smartphone camera to access and download our free **ARMITRON CONNECT** mobile app to set up your smartwatch.



Apple iOS (version 9.0 and above)
Android (version 5.0 and above)

PAIRING YOUR SMARTWATCH

Power on your smartwatch (press and hold the side button for 5 seconds), then open the **ARMITRON CONNECT** app. Tap the watch icon located on the bottom bar to start pairing. Select "Add Device" and choose your smartwatch. Ensure that the pairing code displayed on the app matches the one on your smartwatch screen. Pairing will synchronize the time and date on your watch.

Note: Activate Bluetooth on your phone, and only pair your watch using the mobile app.

VISIT US ONLINE

For access to the full user manual, assistance, and answers to frequently asked questions, please visit us online:

www.armitronconnect.com

Love Every Second with your new smartwatch!

FCC REGULATORY COMPLIANCE

Caution: The user is cautioned that changes or modifications not expressly approved by the party responsible for compliance could void the user's authority to operate the equipment.

Note: This equipment has been tested and found to comply with the limits for a Class B digital device, pursuant to part 15 of the FCC Rules. These limits are designed to provide reasonable protection against harmful interference in a residential installation.

This equipment generates, uses, and can radiate radio frequency energy and, if not installed and used in accordance with the instructions, may cause harmful interference to radio communications. However, there is no guarantee

FCC REGULATORY COMPLIANCE

that interference will not occur in a particular installation. If this equipment does cause harmful interference to radio or television reception, which can be determined by turning the equipment off and on, the user is encouraged to try to correct the interference by one or more of the following measures:

- Reorient or relocate the receiving antenna.
- Increase the separation between the equipment and the receiver.
- Connect the equipment into an outlet on a circuit different from that to which the receiver is connected.
- Consult the dealer or an experienced radio/TV technician for help.

FCC REGULATORY COMPLIANCE

This equipment complies with the FCC's RF radiation exposure limits for an uncontrolled environment. The end user must follow the specific operating instructions to satisfy RF exposure compliance. This transmitter must not be co-located or operated in conjunction with any other antenna or transmitter.

This device complies with Part 15 of the FCC Rules. Operation is subject to the following two conditions:

- (1) This device may not cause harmful interference, and
- (2) this device must accept any interference received, including interference that may cause undesired operation.

LIABILITY

ARMITRON CONNECT cannot be held liable for material damage or personal injury caused by incorrect handling or non-compliance with safety instructions. This device and its accompanying software are not meant for medical use, including diagnosing, treating, mitigating, or preventing diseases or conditions, or for any other medical purpose.

DISPOSAL OF GOODS

Electrical products, batteries & accumulators should not be disposed of in the household waste. If you cannot reuse or recycle your article, it should be disposed of at a civic amenity site or a local authority recycling facility. Do not dispose of your **ARMITRON CONNECT** product within household waste. Disposal of the packaging & your **ARMITRON CONNECT** product should be done in accordance with local regulations. Batteries are not to be disposed of in municipal waste & require separate collection.

PRODUCT INFORMATION

Operating temperature: 14°F to 122°F

Non-operating temperature: -4°F to 140°F

Product: Armitron Connect (Eclipse/Link/Wave/Apex/Sync/Matrix/Quantum) Smartwatch

FCC ID:

ECLIPSE: 2BFCD421001ECL

LINK: 2BFCD421001LNK

WAVE: 2BFCD421003WAV

APEX: 2BFCD421004APX

SYNC: 2BFCD421005SYN

MATRIX: 2BFCD421006MTX

QUANTUM: 2BFCD421008QTM



ARMITRON CONNECT

Quick Start Guide

ECLIPSE | LINK | WAVE | APEX | SYNC | MATRIX | QUANTUM