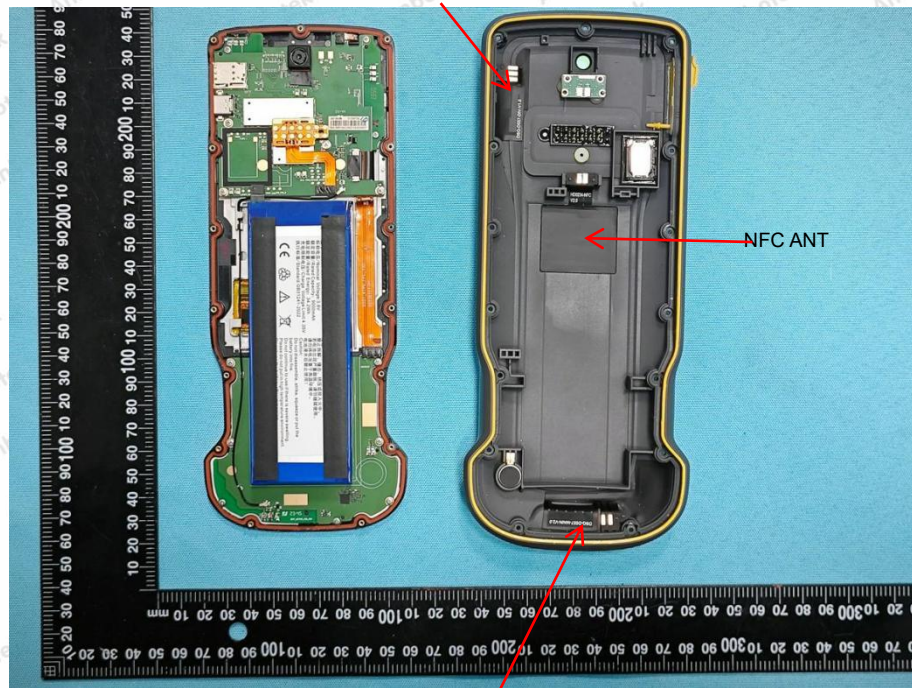
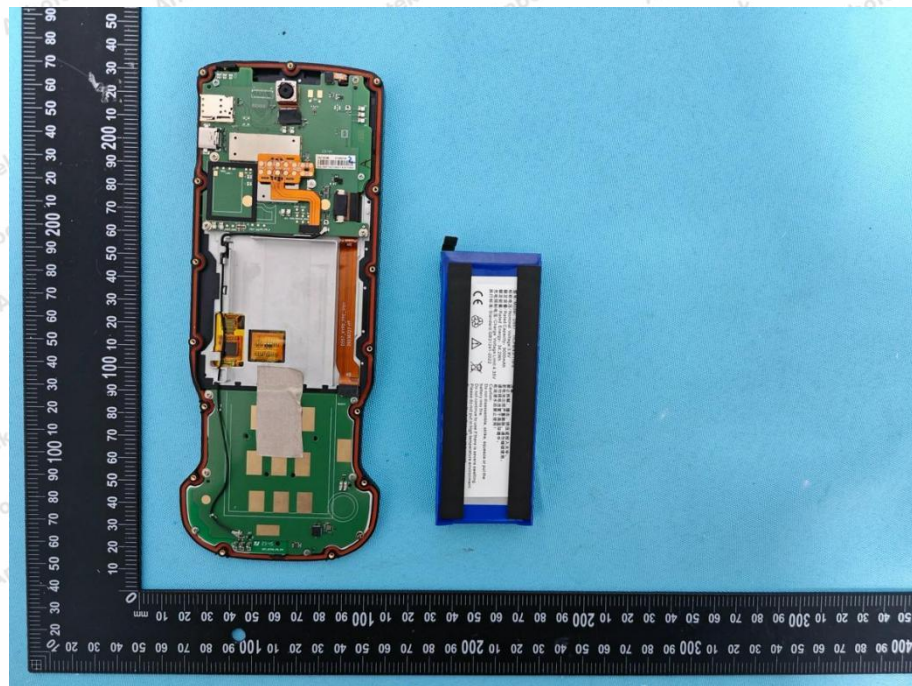


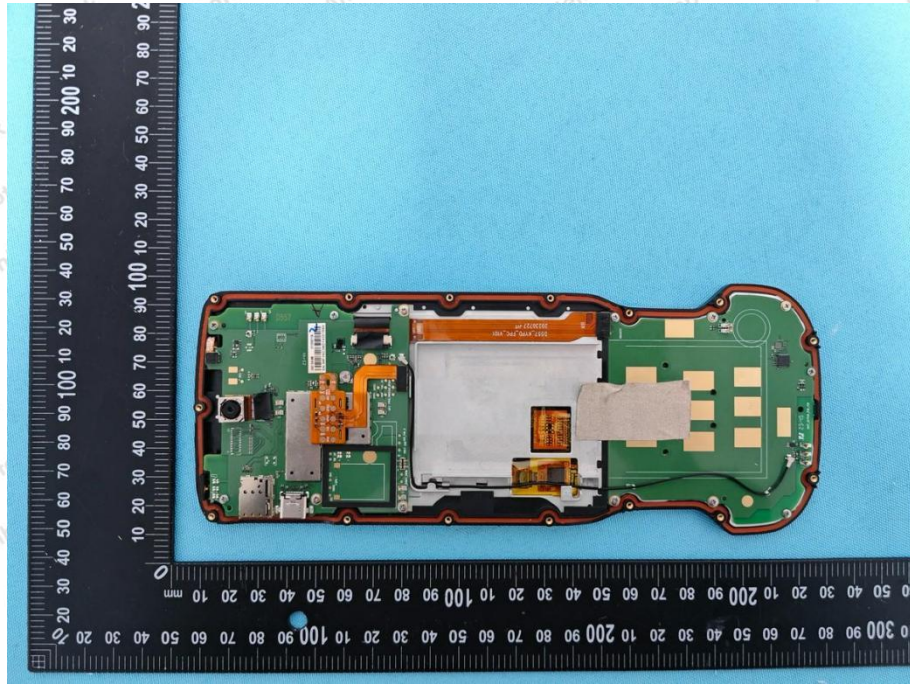
Appendix III -- Internal Photograph

LTE DIV ANT



GSM/WCDMA/LTE ANT





可充电锂离子电组
Rechargeable Li-ion Battery

型号/Model: D557 11CP6/43/116-2
标称电压/Nominal Voltage: 3.8V
额定容量/Rated Capacity: 9000mAh
额定能量/Rated Energy: 34.2Wh
充电限制电压/Charge Voltage Limit: 4.35V
执行标准/Standard: GB31241-2022

注意:
禁止拆解、撞击、挤压或投入火中。
若电池出现严重膨胀, 请勿继续使用。
请勿将电池置于高温环境中。
电池浸水后禁止使用!

Caution:
Do not disassemble, strike, squeeze or put the battery into fire.
Do not continue to use if there is severe swelling.
Please do not put in high temperature environment.
Do not use the battery after immersion

生产厂: 深圳市金麒麟电源技术有限公司
Manufacturers: Shenzhen Chollpower Technology co.,Ltd

CE, Recycle, Fire, No Fire

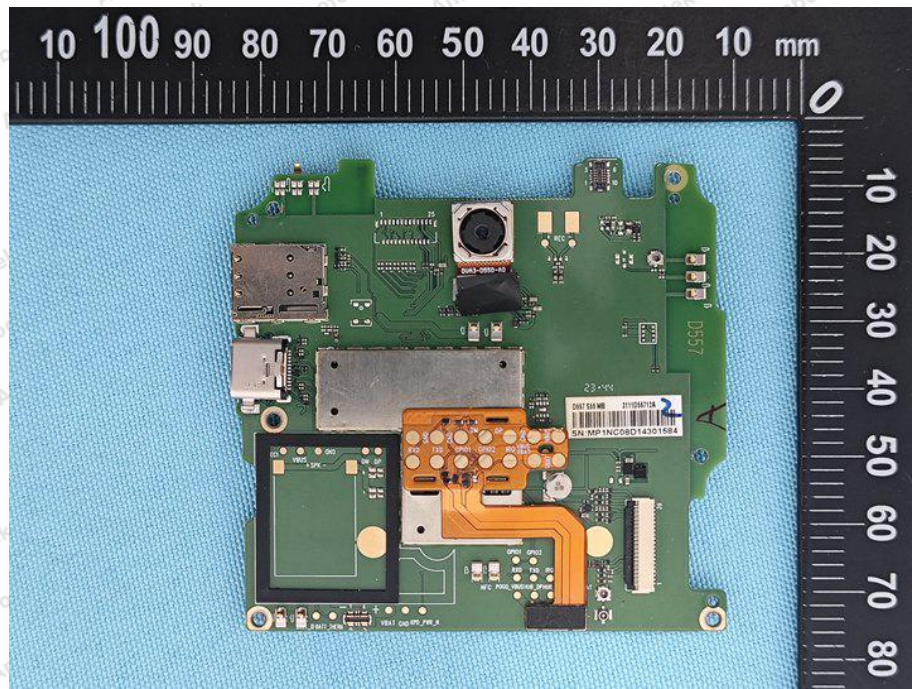
S/N: C1052A230900283

Shenzhen Anbotek Compliance Laboratory Limited

Address: 1/F., Building D, Sogood Science and Technology Park, Sanwei Community, Hangcheng Street, Bao'an District, Shenzhen, Guangdong, China.
Tel: (86) 0755-26066440 Fax: (86) 0755-26014772 Email: service@anbotek.com

Hotline
400-003-0500
www.anbotek.com.cn





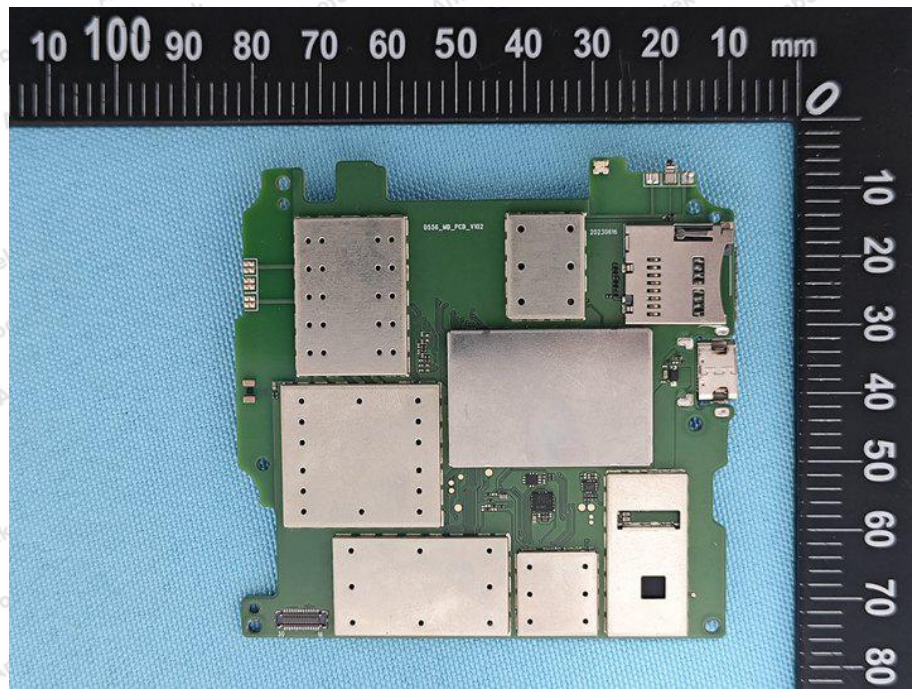
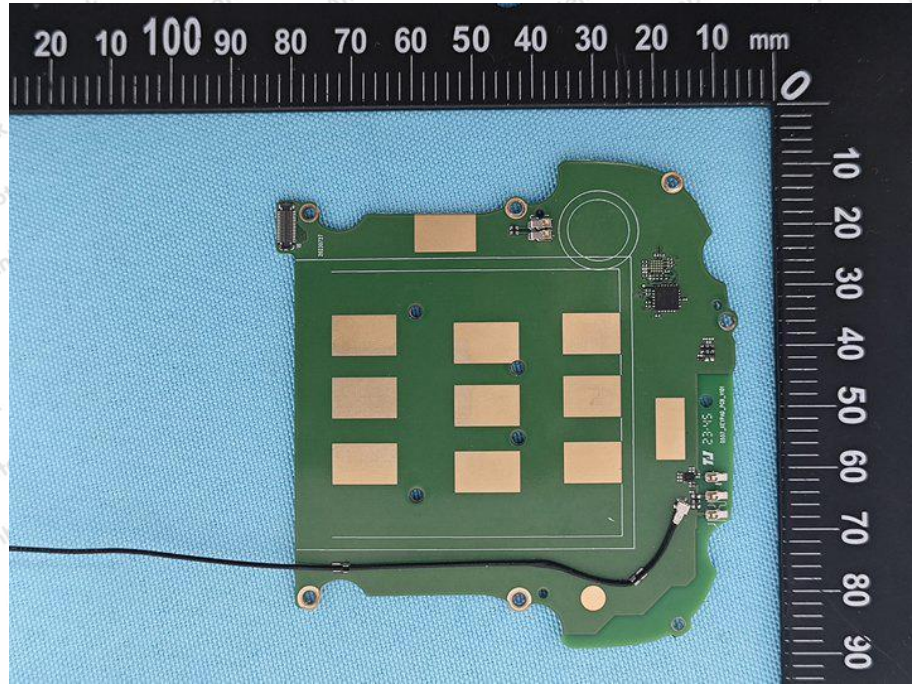
Shenzhen Anbotek Compliance Laboratory Limited

Address: 1/F., Building D, Sogood Science and Technology Park, Sanwei Community, Hangcheng Street, Bao'an District, Shenzhen, Guangdong, China.
Tel: (86) 0755-26066440 Fax: (86) 0755-26014772 Email: service@anbotek.com



Hotline
400-003-0500
www.anbotek.com.cn





Shenzhen Anbotek Compliance Laboratory Limited

Address: 1/F., Building D, Sogood Science and Technology Park, Sanwei Community, Hangcheng Street, Bao'an District, Shenzhen, Guangdong, China.
Tel: (86) 0755-26066440 Fax: (86) 0755-26014772 Email: service@anbotek.com

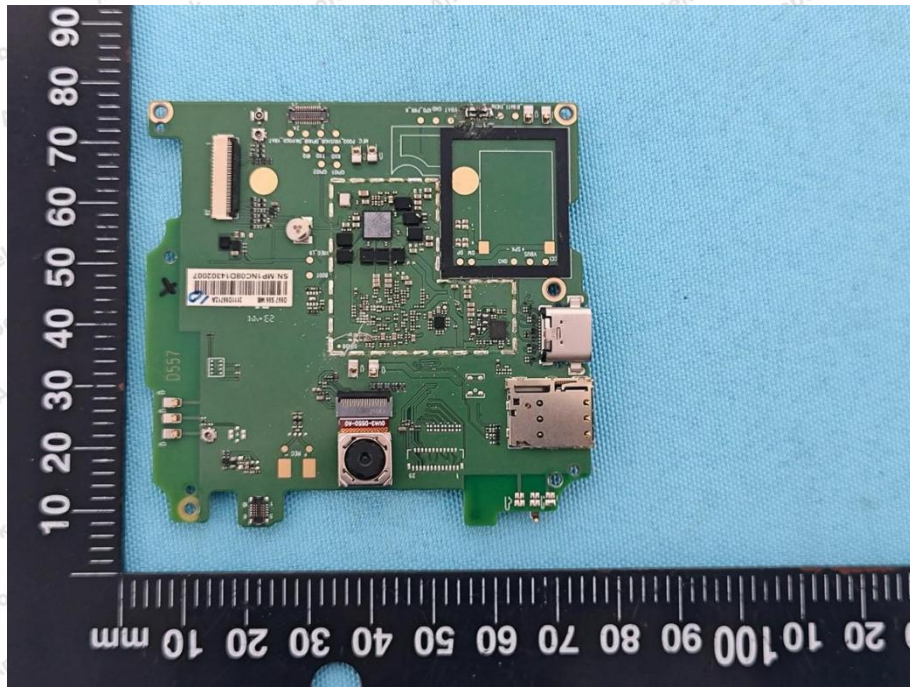
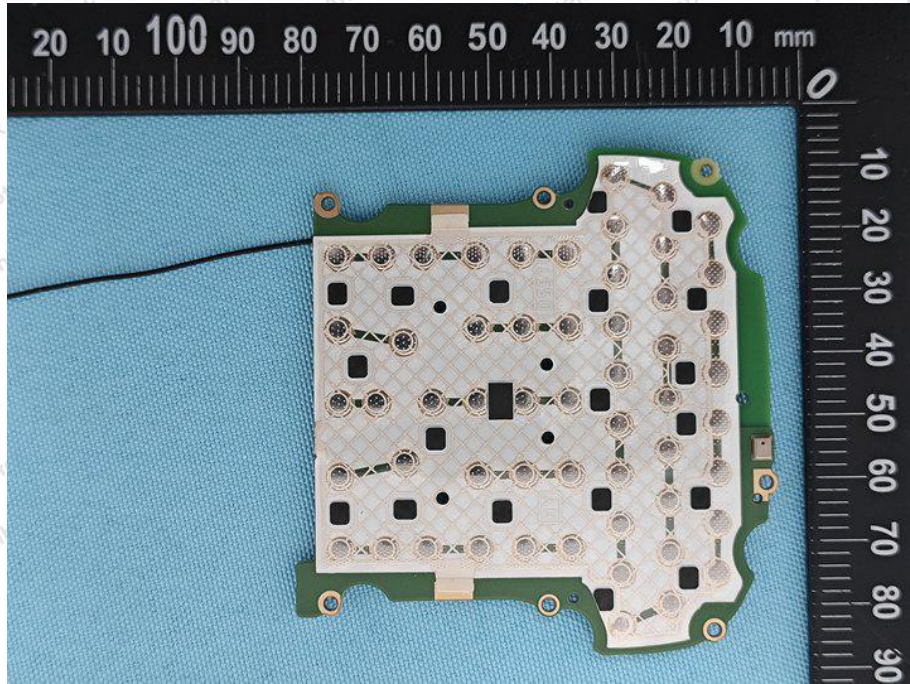


Hotline

400-003-0500

www.anbotek.com.cn



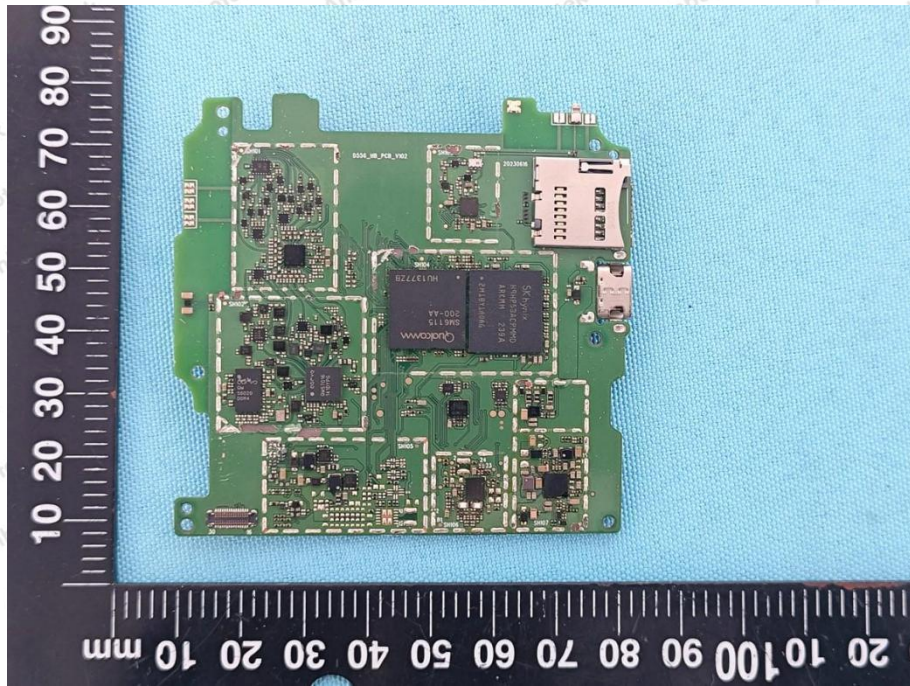


Shenzhen Anbotek Compliance Laboratory Limited

Address: 1/F., Building D, Sogood Science and Technology Park, Sanwei Community, Hangcheng Street, Bao'an District, Shenzhen, Guangdong, China.
Tel: (86) 0755-26066440 Fax: (86) 0755-26014772 Email: service@anbotek.com

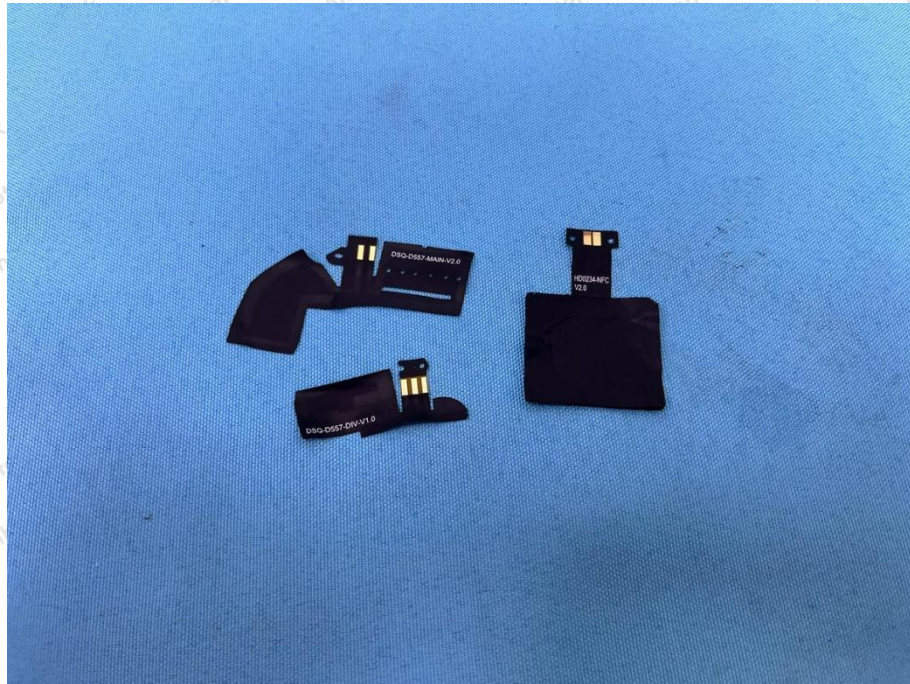
Hotline
400-003-0500
www.anbotek.com.cn

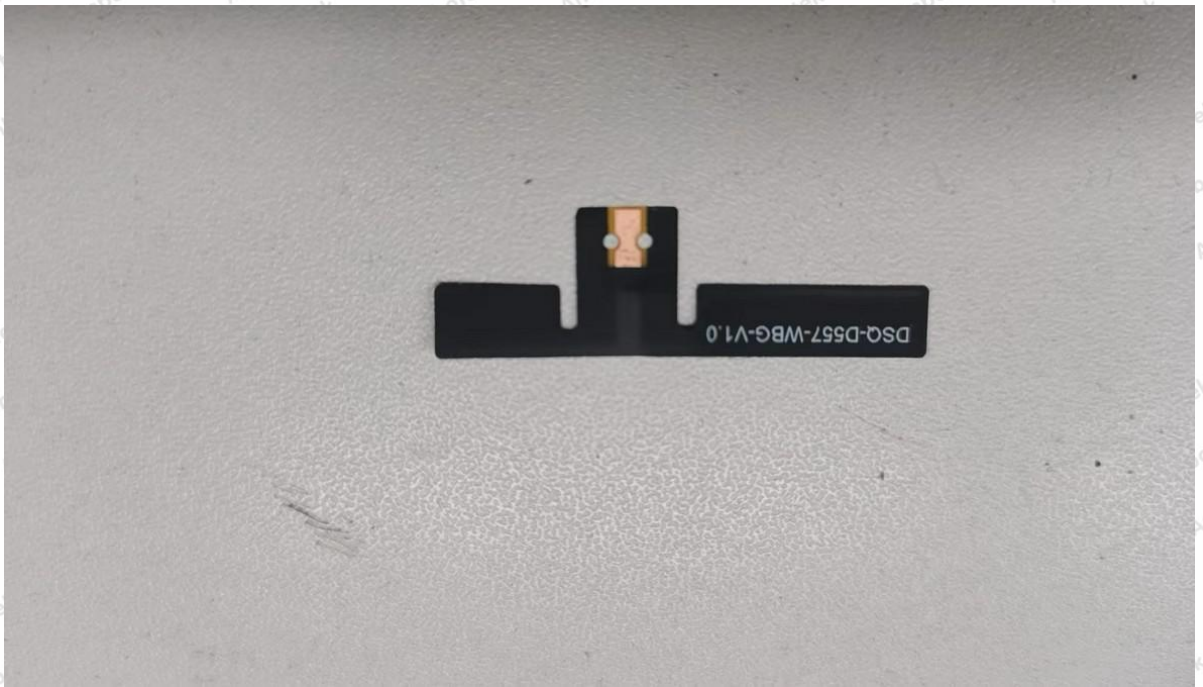




BT/WIFI/GNSS ANT







Shenzhen Anbotek Compliance Laboratory Limited

Address: 1/F., Building D, Sogood Science and Technology Park, Sanwei Community, Hangcheng Street, Bao'an District, Shenzhen, Guangdong, China.
Tel: (86) 0755-26066440 Fax: (86) 0755-26014772 Email: service@anbotek.com



Hotline
400-003-0500
www.anbotek.com.cn



