

# ***ALPINE STYLE***

## **KTX-AR01**

**ALPINE SMART AROMA AIR PURIFIER**



App Control



Negative Ion  
Air Purification



Automobile-Grade  
Ceramic Fragrance



Suitable for  
Mothers and Babies



Centennial  
Brand Fragrance



Technological Ambient  
Lighting Effects

- Please read this quick start guide before using the product.
- iPhone users, please search for "Alpine Music" in the App Store and download/install it.  
Android users can scan the QR code on the right to directly download and install it.



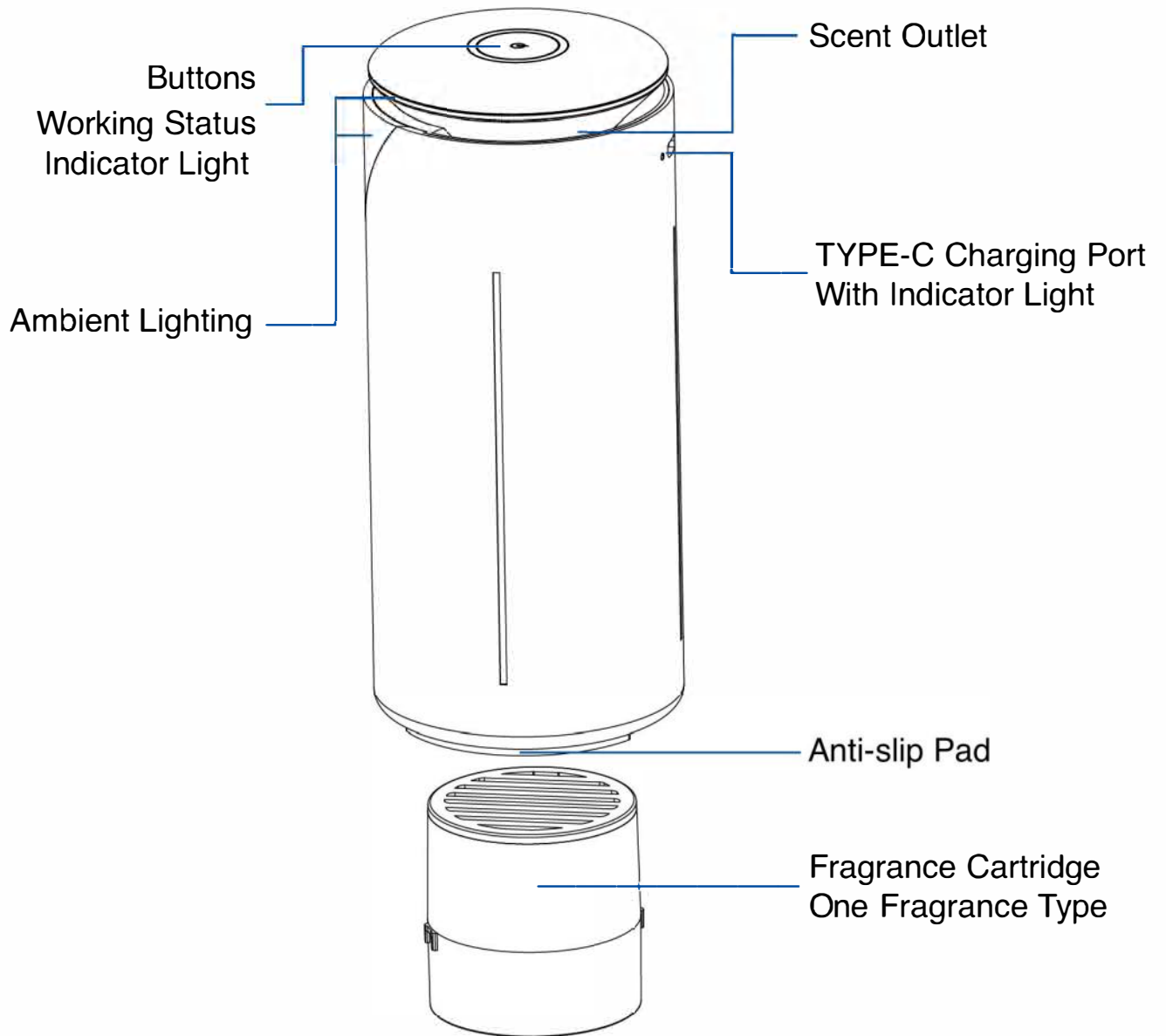


## Important Notes

**Before using Alpine Smart Aroma Air Purifier, please read and follow the following important notes.**

- When using the aroma machine for the first time after purchase or when the rechargeable battery is low, please charge it. Make sure to use a 5V/1A power source for this product. The input voltage of the electrical device should match the product's voltage. When the battery is fully charged, the indicator light will stay on. Please remove the charging to avoid overcharging.
- Do not spill liquid on the machine to prevent machine malfunction or affecting the fragrance scent.
- It is prohibited to use this product near flammable or explosive materials. Do not cover or block the air inlet and outlet during use.
- When the aroma machine's fragrance effect is poor or weak, it may indicate that the fragrance cartridge is running out. Please replace it with a new one.
- Do not let the unpackaged fragrance cartridge come into prolonged contact with plastic, leather, or painted objects to avoid damaging the object's surface.
- Keep the fragrance cartridge out of the reach of children and do not swallow it. In case of accidental ingestion, seek immediate medical attention. Do not place it above or near a safety airbag.
- Some vehicle models have different cup holder grip strengths, and the base of the aroma machine may detach when removed. This is a normal phenomenon.
- In places where the use of wireless devices is explicitly prohibited, do not use this device, as it may interfere with other electronic devices or pose other dangers.
- Disclaimer: Before use, carefully read the product's precautions and instructions. Improper operation or use may void insurance coverage.

# Product Introduction

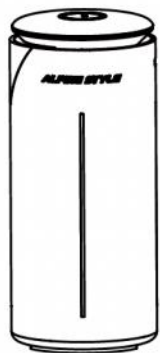


## Specifications

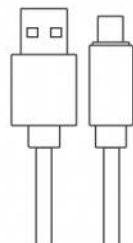
Product Name: Alpine Smart Aroma Air Purifier	
Product Model: KTX-ARO1	Rated Power: $\leq 3W$
Product Size: $\Phi 68 \times 154.7mm$	Noise: $\leq 45dB$
Battery Capacity: 1800mAh	Fragrance Cartridge Net Content: 26g
Input: 5V=1A	

· Proper recycling channels should be used for the disposal of electronic products to reduce electronic waste pollution.

# Package Contents



Main Unit \* 1



Type-C Power Cable \* 1



User Manual \* 1



Fragrance Cartridge \* 1



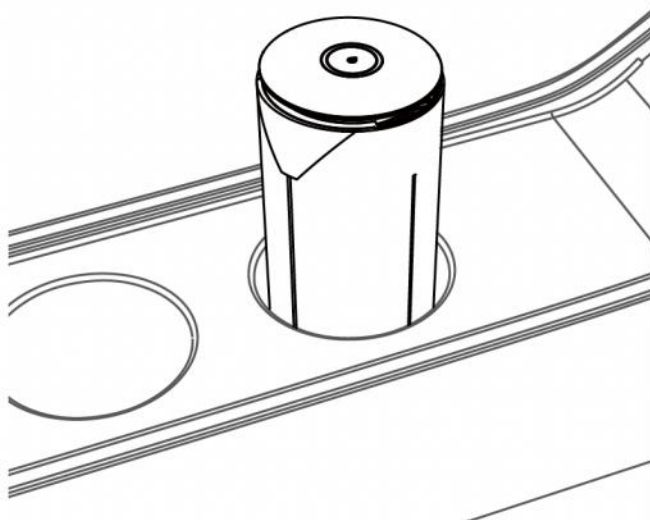
Warranty Card \* 1



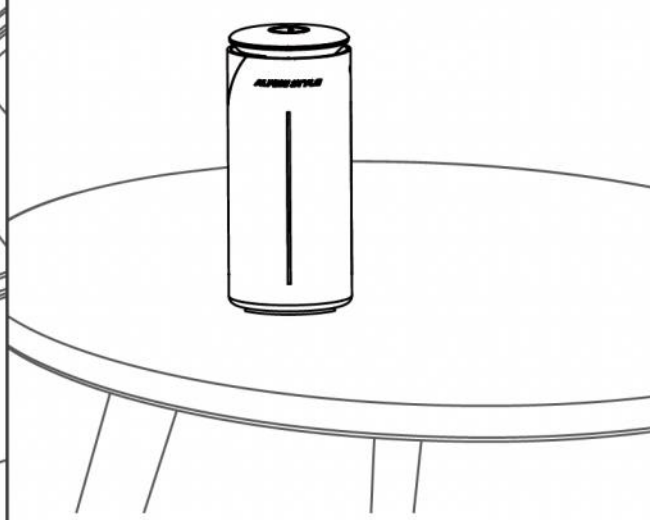
Scent Test Cards \* 2

# Use Cases

## 1 Car



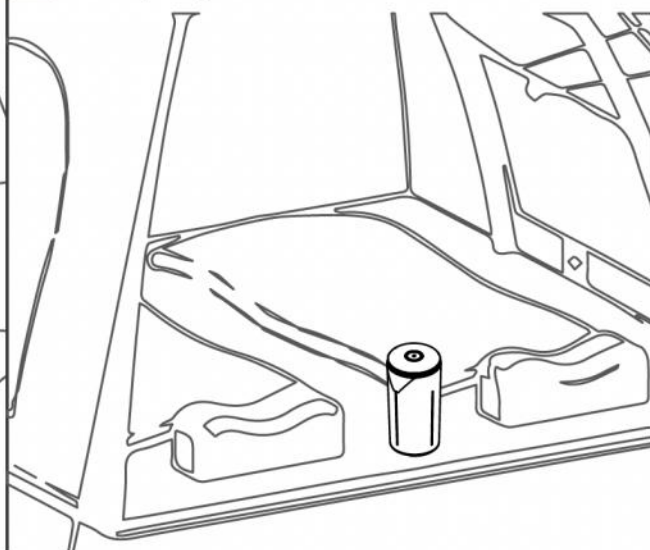
## 2 Office



## 3 Home



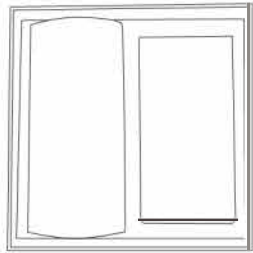
## 4 Camping



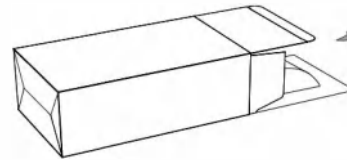
# Instructions for Use

## ● Fragrance Cartridge Installation Steps:

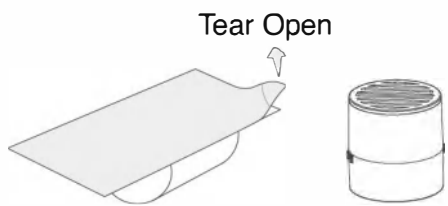
① Tear off the protective film, open the top and bottom covers, and take out the product and the fragrance cartridge inner box.



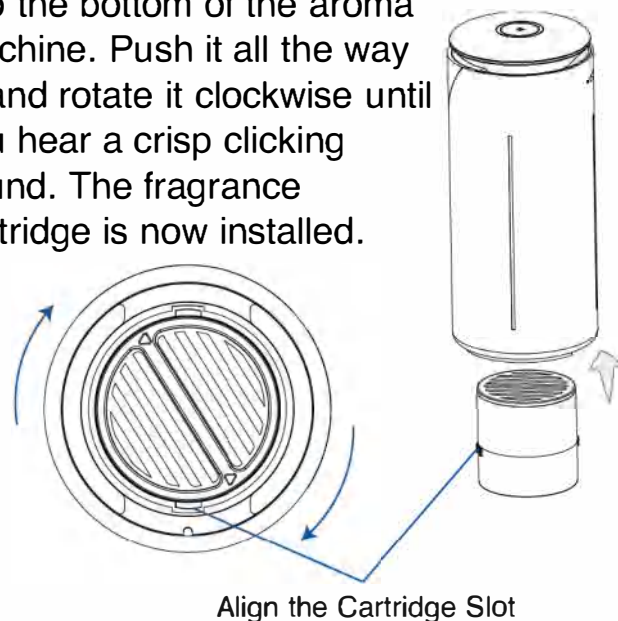
② Open the box and pull out the fragrance cartridge.



③ Along the tear line, tear open the aluminum foil and remove the fragrance cartridge.



④ Align the cartridge slot and insert the fragrance cartridge into the bottom of the aroma machine. Push it all the way in and rotate it clockwise until you hear a crisp clicking sound. The fragrance cartridge is now installed.

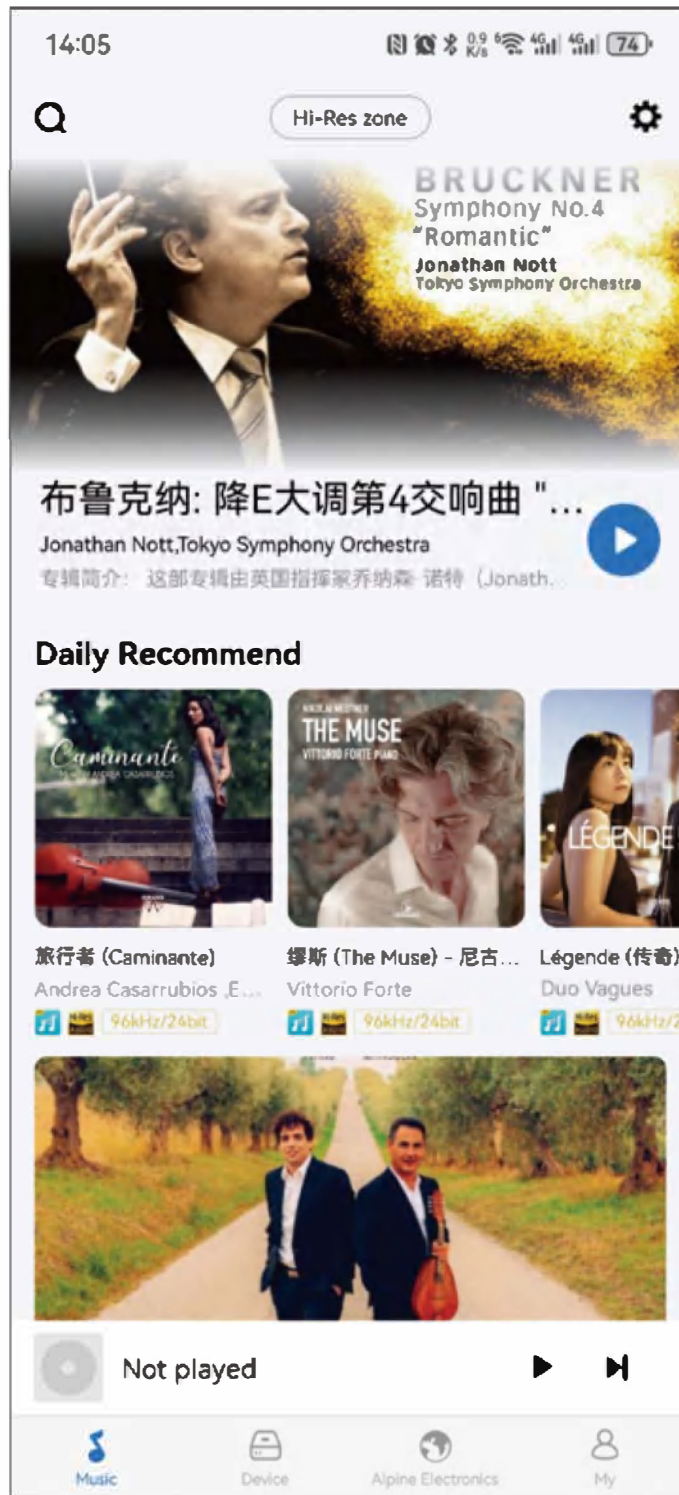


## ● APP User Guide:

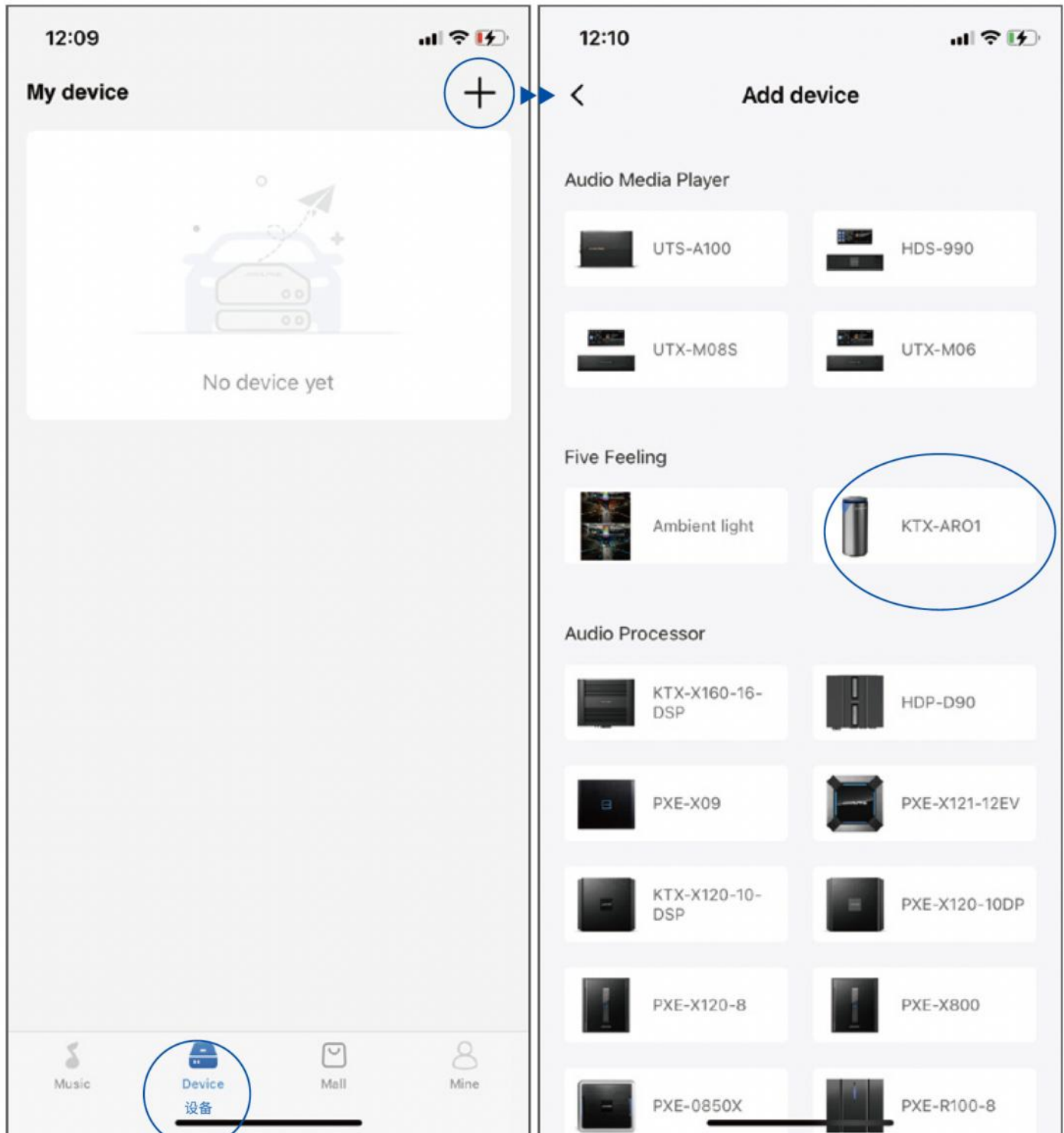
1. Open the downloaded Alpine Music app and connect to view the information of the air purifier.
2. The app and the device are connected via Bluetooth.
3. The product's buttons are located at the top of the device, and their functions are as follows:
  - a. Press the power button lightly to start the strong fragrance mode by default. Press the button again to switch to the weak fragrance mode. The button will have a white light.
  - b. Long-press the power button for 2 seconds to power off and completely shut down the device.
  - c. Double-tap the physical button to quickly enter or exit the purification mode. When the purification mode is activated, the button light will be green.

## Steps to Connect the Device via the App

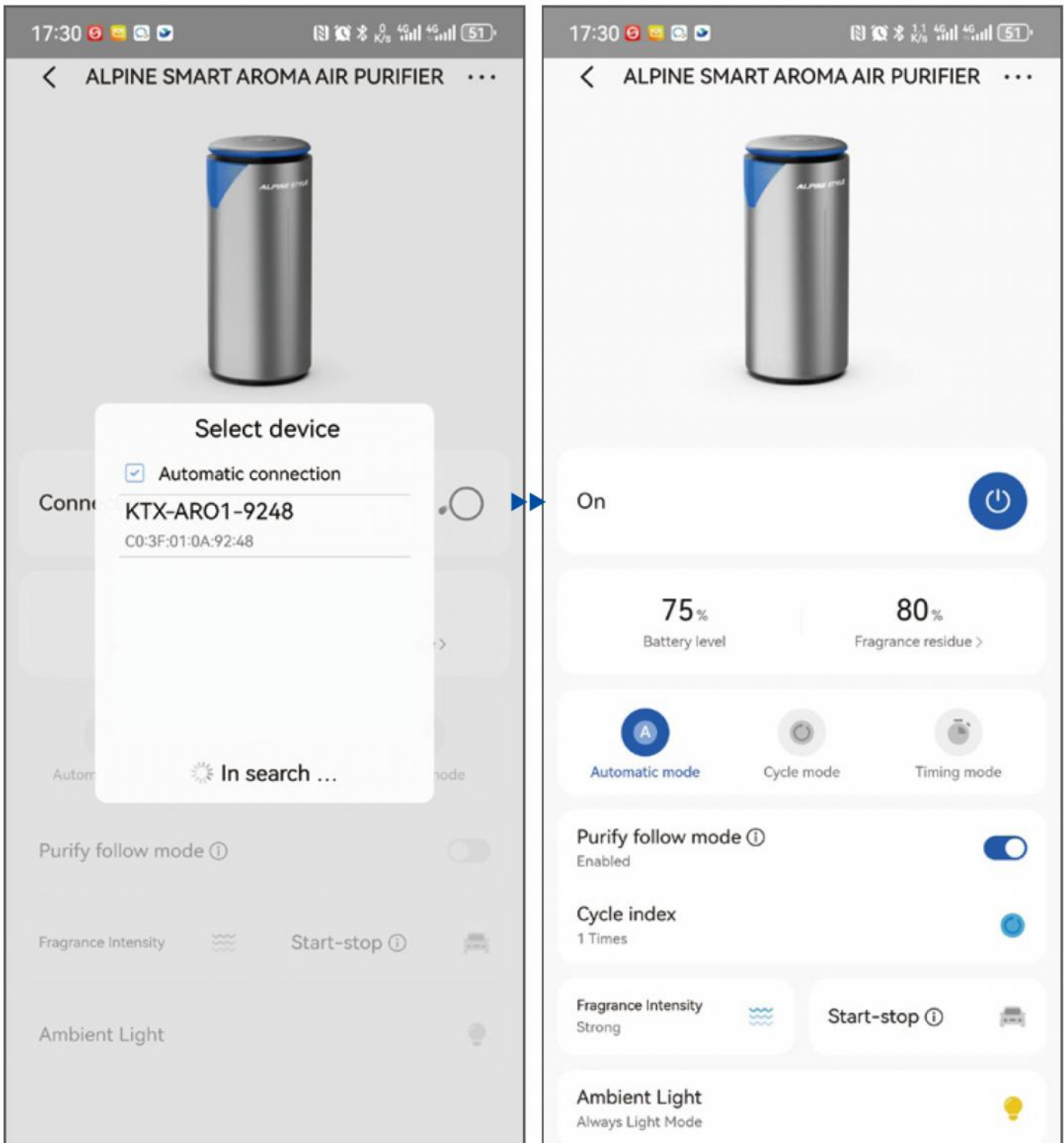
1. Make sure that your phone's Bluetooth is turned on and is in close proximity to the air purifier. Open the "Alpine Music" app.



2. Tap on the "Device" tab at the bottom of the screen to access the device page.
3. Tap the "+" button at the top right corner of the device page to enter the "Add Device" page. Select the "KTX-ARO1" category.

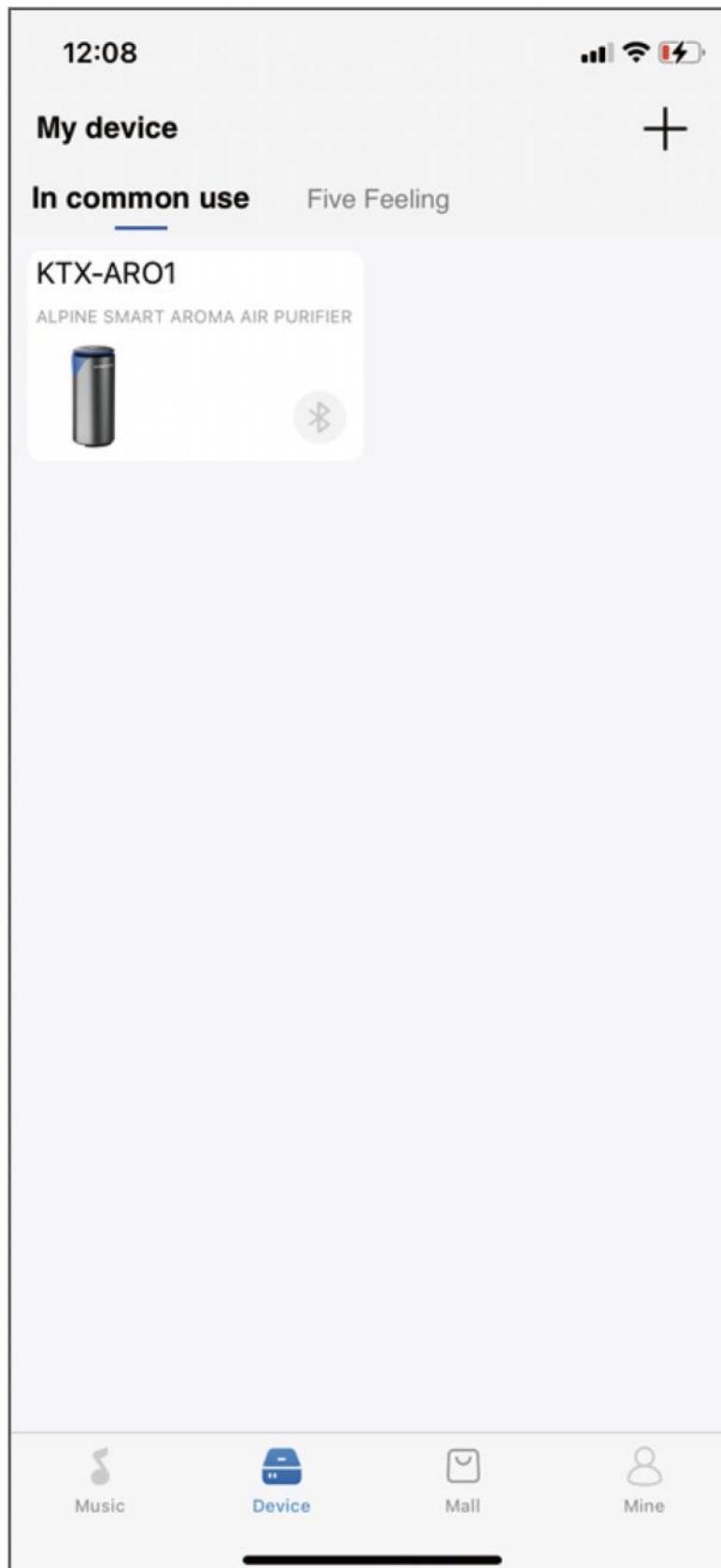


4. On the "Select Device" page, select the device "KTX-ARO1-XXXX" from the Bluetooth list that appears for connection.
5. Once the connection is established, you will be taken to the control page.





6. At this point, the device will be added to the "My Device" list. In the future, you can simply click on it to select and use.





## Function Description

1. The app allows control over the device's power on/off, fragrance diffusion intensity, and three working modes:
  - a. Auto Mode: Fragrance diffusion for 5 minutes and then stops.
  - b. Cycle Mode: Fragrance diffusion for 5 minutes followed by a 10-minute pause in a repeating cycle. This mode can be set for a maximum of 5 cycles (default is 1 cycle).
  - c. Timer Mode: Users can customize the fragrance diffusion duration with options of 5, 10, 20, 30, 40, 50, 60, 90, or 120 minutes (default is 5 minutes).
2. Battery Indicator:

When the battery level is below 20%: The top indicator light flashes red three times at a frequency of 2Hz.

When the battery level is below 5%: The top indicator light flashes red three times at a frequency of 2Hz, and the device shuts down.
3. Purification Mode:

Users can set the number of cycles, up to a maximum of 3 cycles. After running for 20 minutes, the device stops for 30 minutes. Negative ions and fragrance can be simultaneously activated. If the fragrance function is turned off, the purification mode will also be turned off.
4. Charging Indicator:

When the air purifier is charging, the indicator light next to the charging port is red. Once charging is complete, it turns green.
5. Car Start/Stop:

When the car start/stop function is enabled, the system automatically performs periodic device status checks every 10 minutes. Based on the detection results, the system intelligently controls the device's start and stop. Users can personalize the settings by selecting the preset working modes on the mobile app.

In the app, users can choose different time interval options, such as 10 minutes, 20 minutes, or 30 minutes, which determine the activation interval of the device's working mode. To ensure efficient energy usage and environmental protection, if the vehicle remains parked for more than 10 minutes, the system will automatically enter an energy-saving state and turn off the device. This design aims to achieve a perfect combination of efficient energy management and convenient user experience.
6. Resetting Remaining Quantity:

After replacing the fragrance cartridge, please go to the "Fragrance residue" section in the app and click on "Reset" to synchronize and update the remaining quantity information.

## Hazardous Substances in the Product

Hazardous Substances						
Component Name	Lead (Pb)	Mercury (Hg)	Cadmium (Cd)	Hexavalent Chromium (Cr(VI))	Polybrominated Biphenyls (PBB)	Polybrominated Diphenyl Ethers (PBDE)
PCBA	X	○	○	○	○	○
Enclosure	○	○	○	○	○	○

This table is prepared in accordance with the requirements of SJ/T 11364.

- : Indicates that the content of the hazardous substance in all homogeneous materials of the component is below the limit requirements specified in GB/T 26572.
- X: Indicates that the content of the hazardous substance in at least one homogeneous material of the component exceeds the limit requirements specified in GB/T 26572, and there is currently no mature alternative solution in the industry. It is considered an exempt component.

**Complies with the environmental requirements of the European Union ROHS directive.**



The number inside this symbol represents the environmentally friendly service life of the product under normal use conditions, which is 10 years.

### Battery Disposal

1. Before disposing of the appliance, the battery must be removed from the device. When removing the battery, make sure the device is powered off, and dispose of the battery safely.

2. When opening the product with tools and when disposing of the battery, take necessary safety precautions.

- Unplug the power cord from the product.
- If necessary, open the instrument's enclosure using the corresponding screwdriver.
- After opening the instrument's enclosure, remove the battery.

**This device contains a wireless radio transmitting module with the approved model code (CMIIT ID: 2021DP4940).**

#### FCC statement

This device complies with Part 15 of the FCC Rules. Operation is subject to the following two conditions: (1) this device may not cause harmful interference, and (2) this device must accept any interference received, including interference that may cause undesired operation.

Changes or modifications to this unit not expressly approved by the party responsible for compliance could void the user's authority to operate the equipment.

NOTE: This equipment has been tested and found to comply with the limits for a

Class B digital device, pursuant to Part 15 of the FCC Rules. These limits are designed to provide reasonable protection against harmful interference in a residential installation. This equipment generates, uses and can radiate radio frequency energy and, if not installed and used in accordance with the instructions, may cause harmful interference to radio communications. However, there is no guarantee that interference will not occur in a particular installation.

If this equipment does cause harmful interference to radio or television reception, which can be determined by turning the equipment off and on, the user is encouraged to try to correct the interference by one or more of the following measures:

- Reorient or relocate the receiving antenna.
- Increase the separation between the equipment and receiver.
- Connect the equipment into an outlet on a circuit different from that to which the receiver is connected.
- Consult the dealer or an experienced radio/TV technician for help.

This device and its antenna(s) must not be co-located or operation in conjunction with any other antenna or transmitter.

#### Radiation Exposure Statement

The device has been evaluated to meet general RF exposure requirement in portable exposure condition without restriction.

Product Model: KTX-ARO1 PMN: ALPINE SMART AROMA AIR PURIFIER

#### ISED statement

English:

This device contains licence-exempt transmitter(s)/receiver(s) that comply with Innovation, Science and Economic Development Canada's licence-exempt RSS(s). Operation is subject to the following two conditions: (1) This device may not cause interference. (2) This device must accept any interference, including interference that may cause undesired operation of the device.

French: Cet appareil contient des émetteurs/récepteurs exempts de licence qui sont conformes aux RSS exemptés de licence d'Innovation, Sciences et Développement économique Canada. L'exploitation est soumise aux deux conditions suivantes : (1) Cet appareil ne doit pas provoquer d'interférences. (2) Cet appareil doit accepter toute interférence, y compris les interférences susceptibles de provoquer un fonctionnement indésirable de l'appareil.

This device meets the exemption from the routine evaluation limits in section 2.5 of RSS 102 and compliance with RSS 102 RF exposure, users can obtain Canadian information on RF exposure and compliance.

cet appareil est conforme à l'exemption des limites d'évaluation courante dans la section 2.5 du cnr - 102 et conformité avec rss 102 de l'exposition aux rf, les utilisateurs peuvent obtenir des données canadiennes sur l'exposition aux champs rf et la conformité.

This equipment complies with Canada radiation exposure limits set forth for an uncontrolled environment.

Cet équipement est conforme aux limites d'exposition aux rayonnements du Canada établies pour un environnement non contrôlé.

The device has been evaluated to meet general RF exposure requirement. This equipment should be installed and operated with minimum distance 0mm between the radiator & your body. L'appareil a été évalué pour répondre aux exigences générales d'exposition aux RF. Cet équipement doit être installé et utilisé avec une distance minimale de 0 mm entre le radiateur et votre corps.

Company Name: Alps Alpine (China) Co., Ltd.  
Address: 28A1, No. 7 Guanghua Rd., Chaoyang District, Beijing, China  
Company Website: [www.alpine.com.cn](http://www.alpine.com.cn)