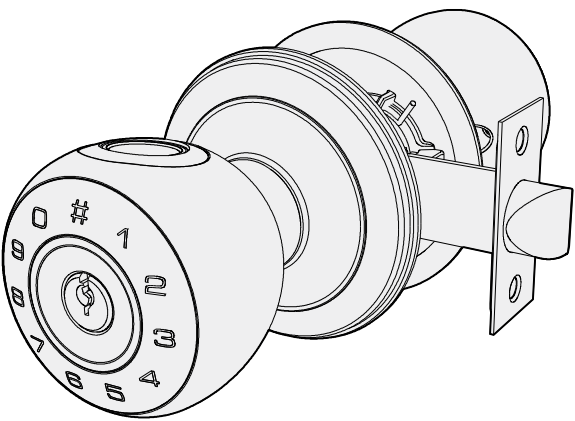
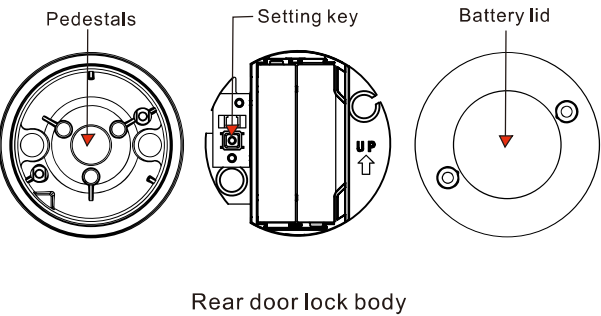
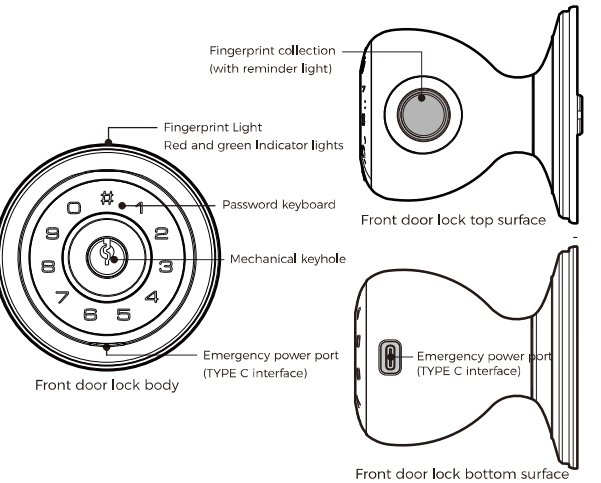


# Smart Lock Product Manual (MQ 01)



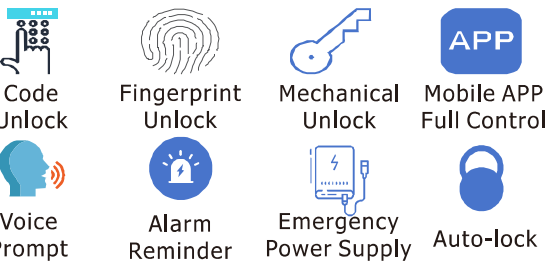
## Part1.Appearance Display



## Part2.Packing List

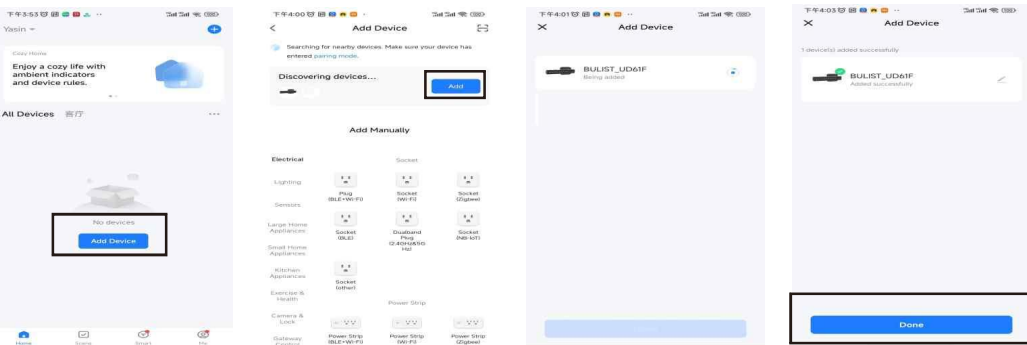
No.	Item	Number
1	Exterior Part	1
2	Interior Part	1
3	Latch	1
4	Mechanical Key	2
5	Product & Instllation Manual	2
6	Installation of auxiliary material package	1
7	Drilling Diagram	1

## Part3.Feature List

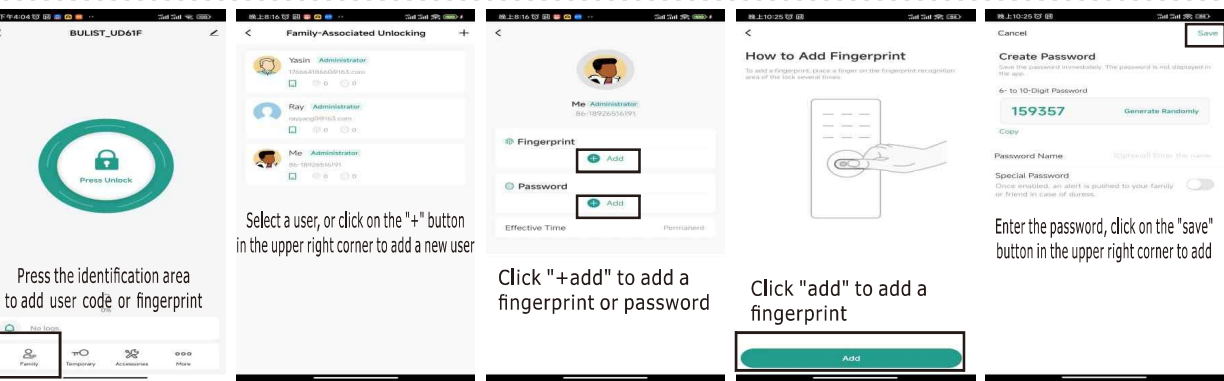


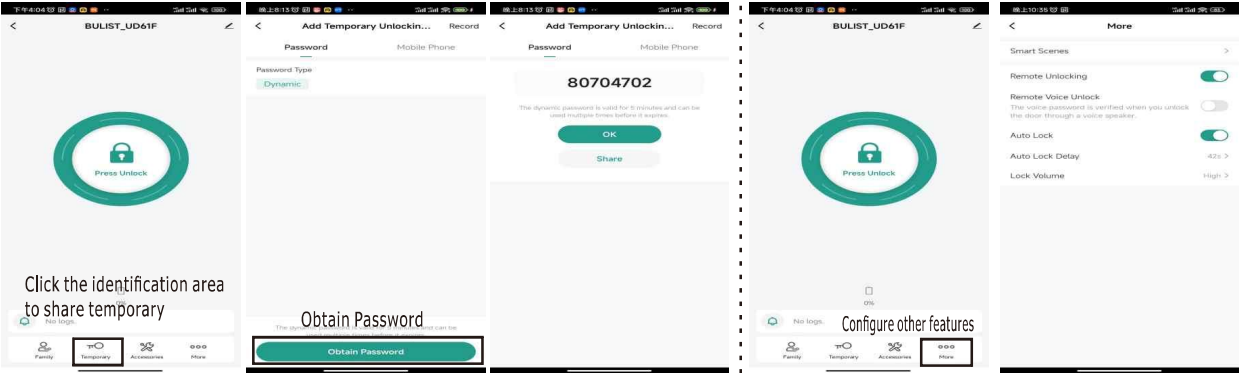
## Part4.How to programm through the APP

Step 1. Scan the QR-Code or download the smart life APP from APP store.  
Step 2. Install the smart life APP and open the APP.  
Step 3. Add device, please ensure that the door lock is in initialization mode.  
Notes: Need to turn on the Bluetooth switch on the phone and close to the door lock

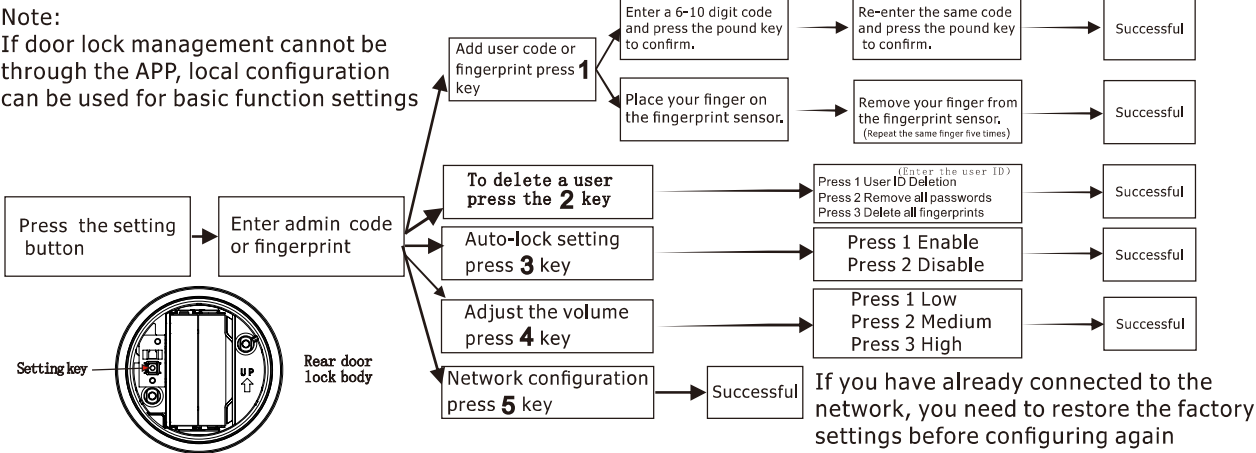


You can add the Tuya BLE/WI-FI gateway to enable remote management.



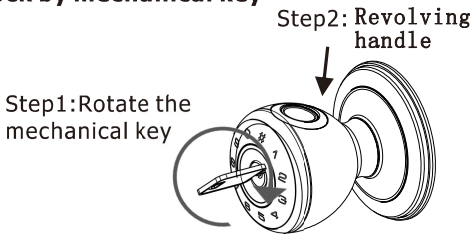


Part5.How to perform local programming

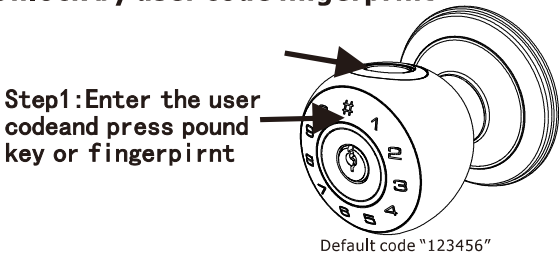


Part6.How to unlock outdoor

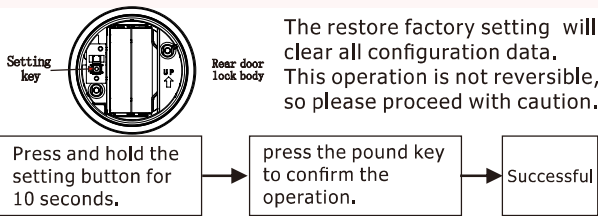
Unlock by mechanical key



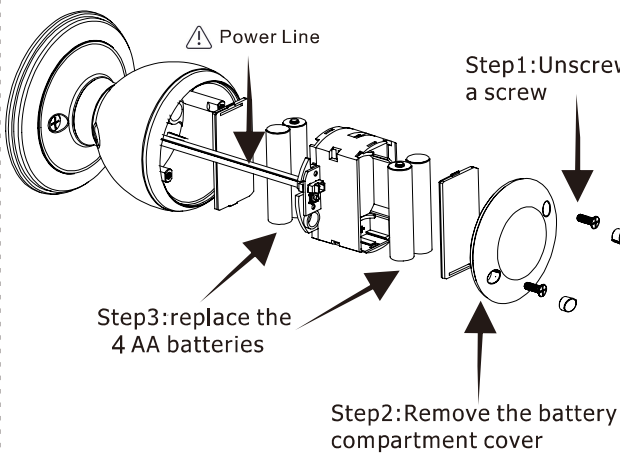
Unlock by user code fingerprint



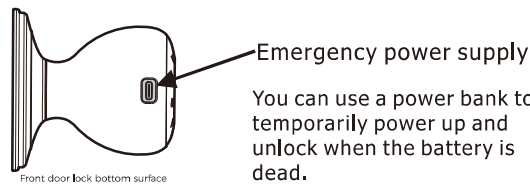
Part7.How to restore factory setting



Part8.How to supply power



! Reminders



Part10.Troubles shooting

Question	Answer
Can not add new user code	<ul style="list-style-type: none"><li>If 50 groups of normal user code have been added, you can delete the unused user code and add new user code again</li><li>The new user code is duplicate</li></ul>
Forget password	Restore the factory setting, and then add the user code or fingerprint
Can't hear the voice guidance	Increase volume through function setting
The APP can not add device	<ul style="list-style-type: none"><li>Restore the factory setting, and try again</li><li>Check the mobile Bluetooth setting is turn on</li></ul>
The keypad or fingerprint locked	<ul style="list-style-type: none"><li>Input error reached 5 times, keypad locked, enter user code in 90 seconds</li><li>Input error reached 10 times, fingerprint module locked, enter fingerprint in 90 seconds</li></ul>
The added finger-print verification	The same fingerprint can be added 2~3 times to improve the verification success rate

**QUALIFIED CERTIFICATE**

MODEL: \_\_\_\_\_

CHECKER: \_\_\_\_\_

DATE: \_\_\_\_\_

If you have any question during product using, please contact our after-sale service team, thanks.

E-mail:zhangzehongdidi@outlook.com

# FCC Warning

This device complies with part 15 of the FCC Rules. Operation is subject to the following two conditions: (1) This device may not cause harmful interference, and (2) this device must accept any interference received, including interference that may cause undesired operation.

Any Changes or modifications not expressly approved by the party responsible for compliance could void the user's authority to operate the equipment.

**Note:** This equipment has been tested and found to comply with the limits for a Class B digital device, pursuant to part 15 of the FCC Rules. These limits are designed to provide reasonable protection against harmful interference in a residential installation. This equipment generates uses and can radiate radio frequency energy and, if not installed and used in accordance with the instructions, may cause harmful interference to radio communications. However, there is no guarantee that interference will not occur in a particular installation. If this equipment does cause harmful interference to radio or television reception, which can be determined by turning the equipment off and on, the user is encouraged to try to correct the interference by one or more of the following measures:

- Reorient or relocate the receiving antenna.
- Increase the separation between the equipment and receiver.
- Connect the equipment into an outlet on a circuit different from that to which the receiver is connected.
- Consult the dealer or an experienced radio/TV technician for help.

This equipment complies with FCC radiation exposure limits set forth for an uncontrolled environment. This equipment should be installed and operated with minimum distance 20cm between the radiator & your body.