

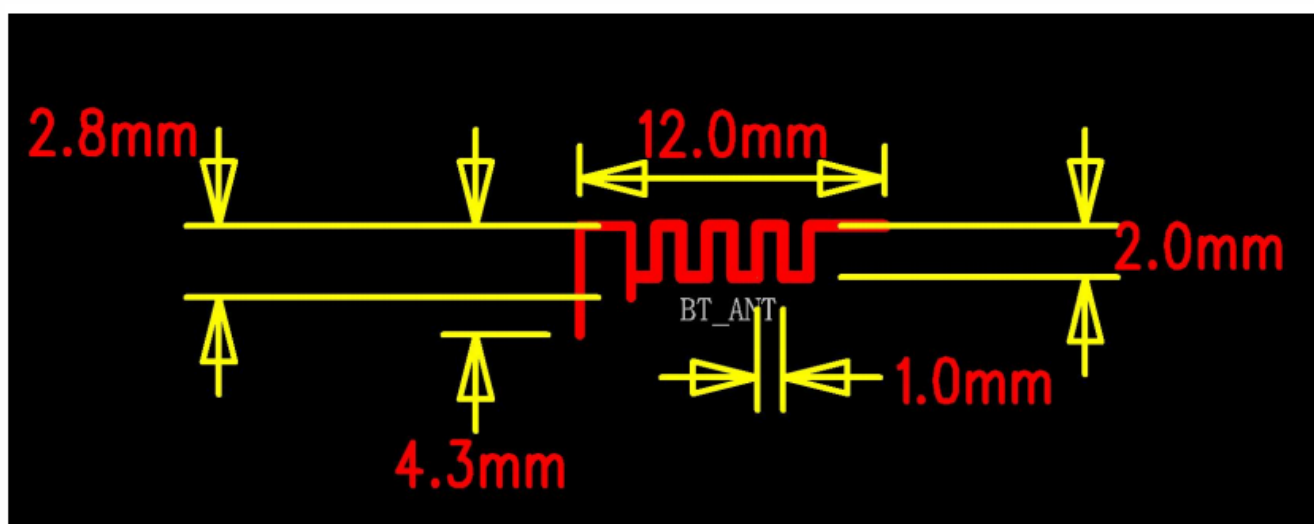
Product specification

Quick Reference Date

	Antenna module on the system board	
Frequenc Range	2400 ~ 2500MHz	
Ant. Port Input Pwr. (dBm)	0 (Typ. BT class 2 output power)	
Tot. Rad. Pwr. (dBm)	-1.2 (Input pwr – loss pwr)	
Peak EIRP(dBm)	1.2	
Directivity (dBi)	1 (all direction antenna)	
Efficiency (dB)	6 0.2 %	
Gain (dBi)	1.9 (Peak Gain XZ-plane)	
Maximum Power (dBm)	1.7 (XZ-plane)	
Minimum Power (dBm)	-4(XZ-plane)	
Avg. Power (dBm)	-0.5(XZ-plane)	
Input Impedence(ohm)	50	
Polarization Type	V ertical & Horizontal	
V . S .W .R	< 1.4	

All the technical data and information contained herein are subject to change without prior notice

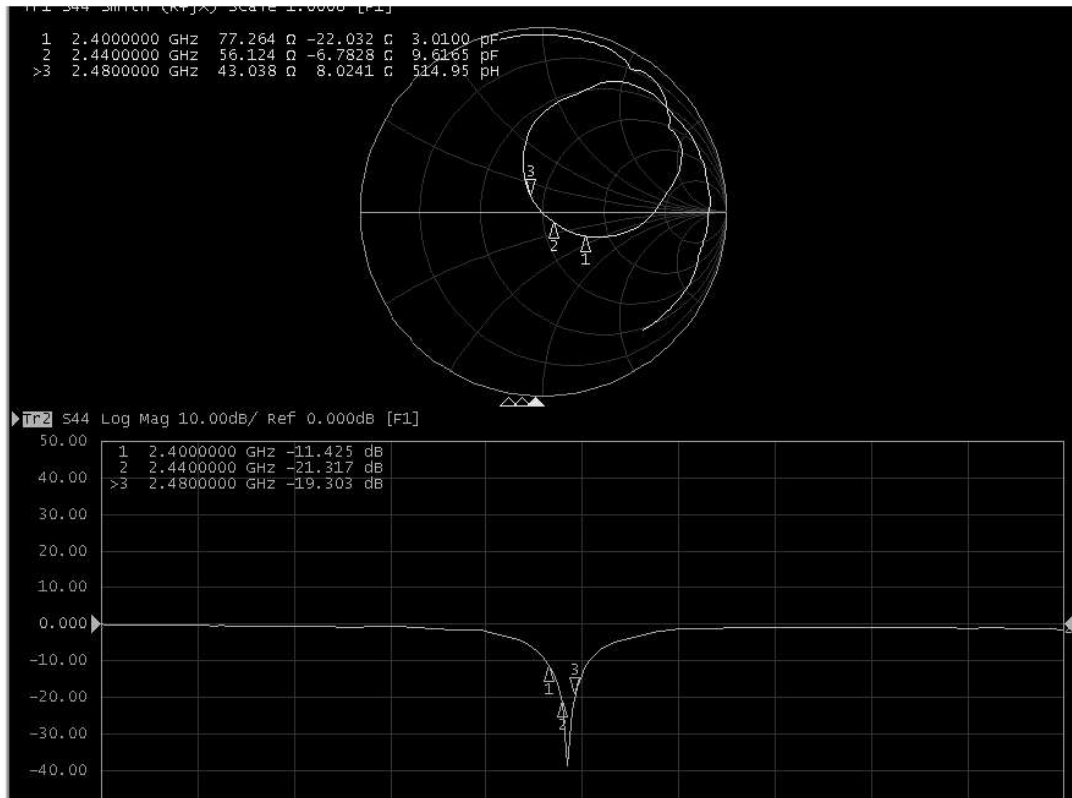
Antenna Layout & module on the system board



Gain Table

Unit in dBi @2.44GHz	XY-plane		XZ-plane		YZ-plane		Efficiency
	Peak	Avg.	Peak	Avg.	Peak	Avg.	
Module Board	-1.17	-0.21	1.9	-3.6	-0.54	-3.0	6 0.2 %

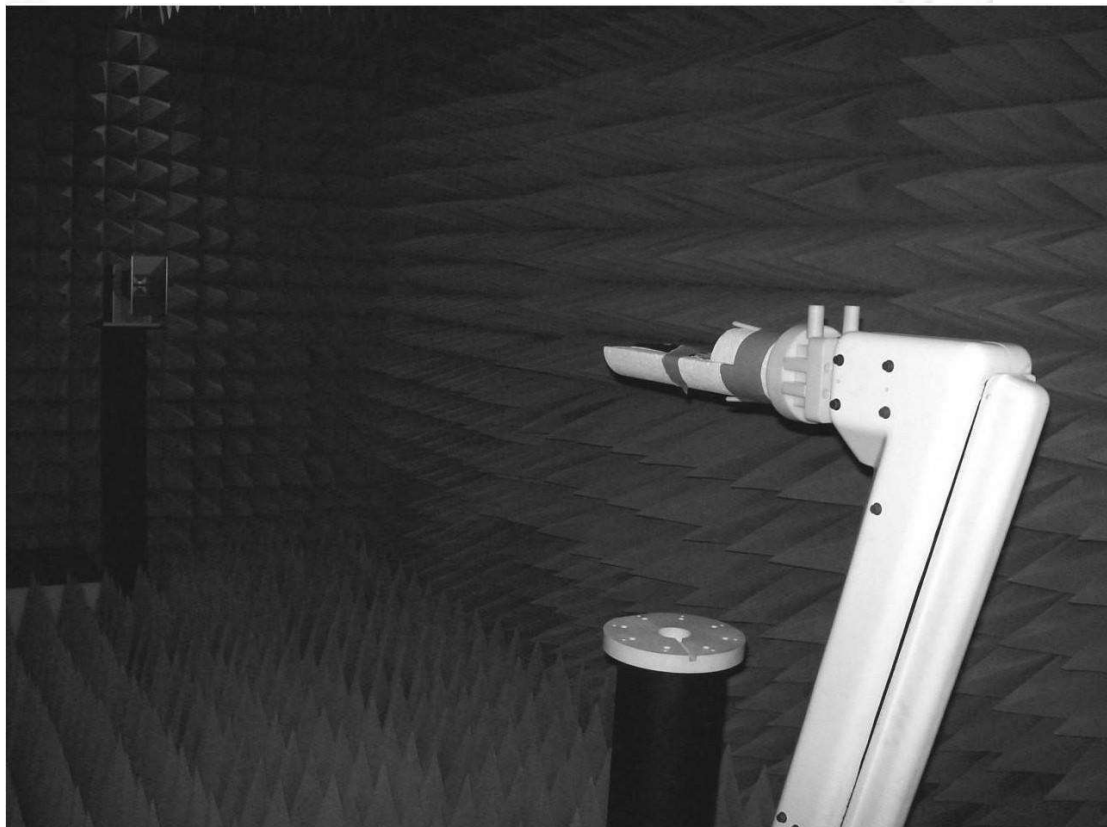
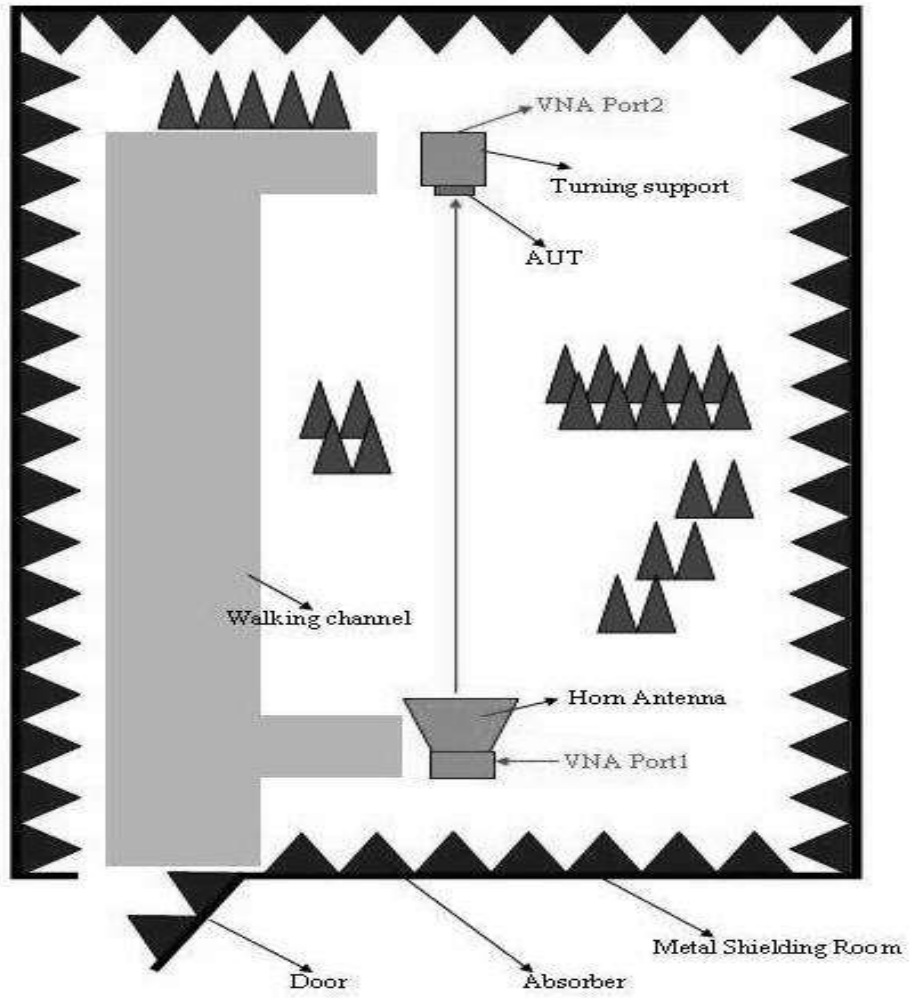
Return Loss



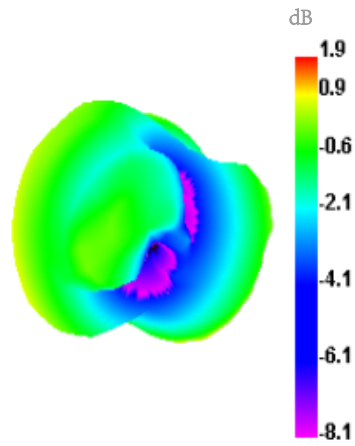
Manufacturer: Zhejiang Kuangdi Industry & Trade Co., Ltd

Address: NO.8 Jin Fu Road, Tang Xian Guan Shan Bei Industrial Zone, YongKang, China

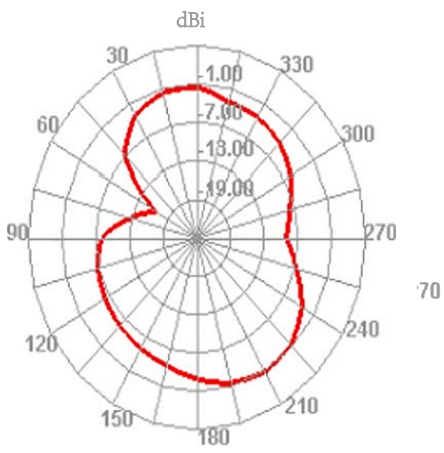
The Environment of Antenna Radiation Pattern



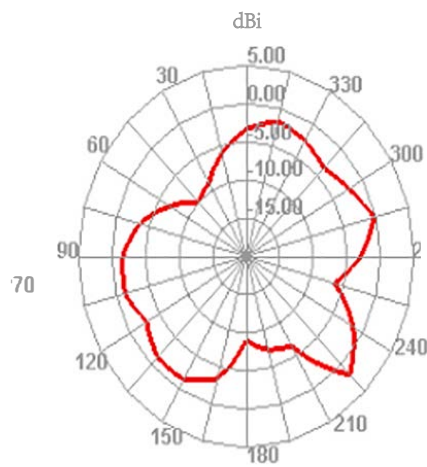
2440.000MHz



XY-plane



XZ-plane



YZ-plane

