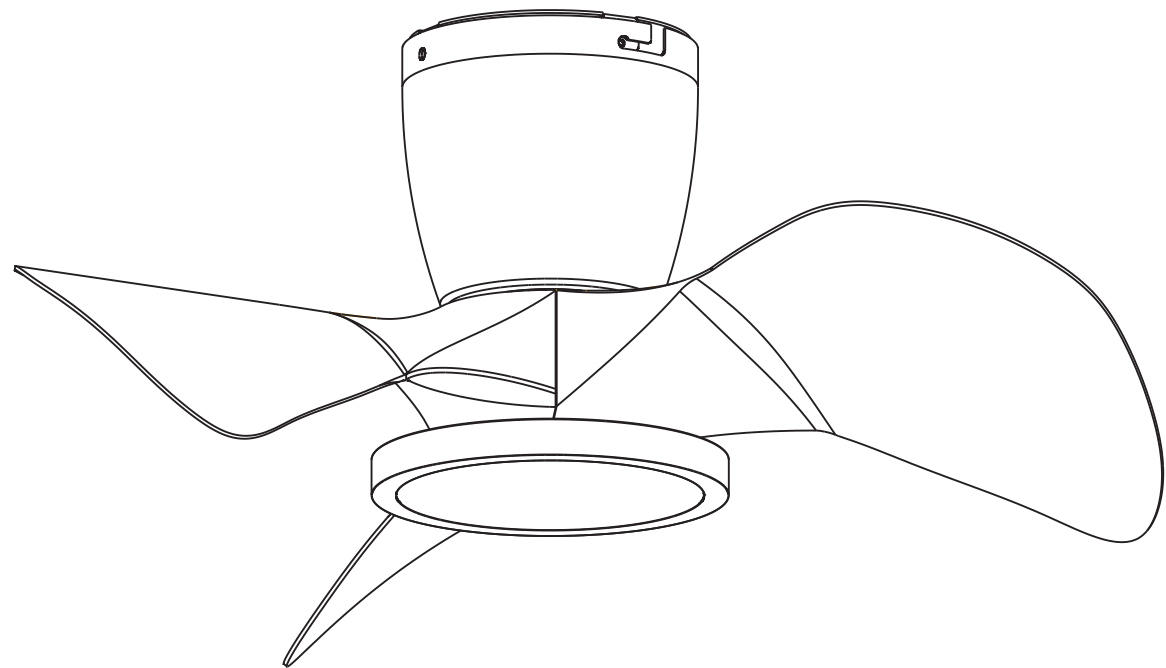


User Manual

Ceiling Fan with Light



Product Specification:

Input Voltage : 100-240V

Material : Metal + Plastic

Color Temperature :

3000/4000/5000K

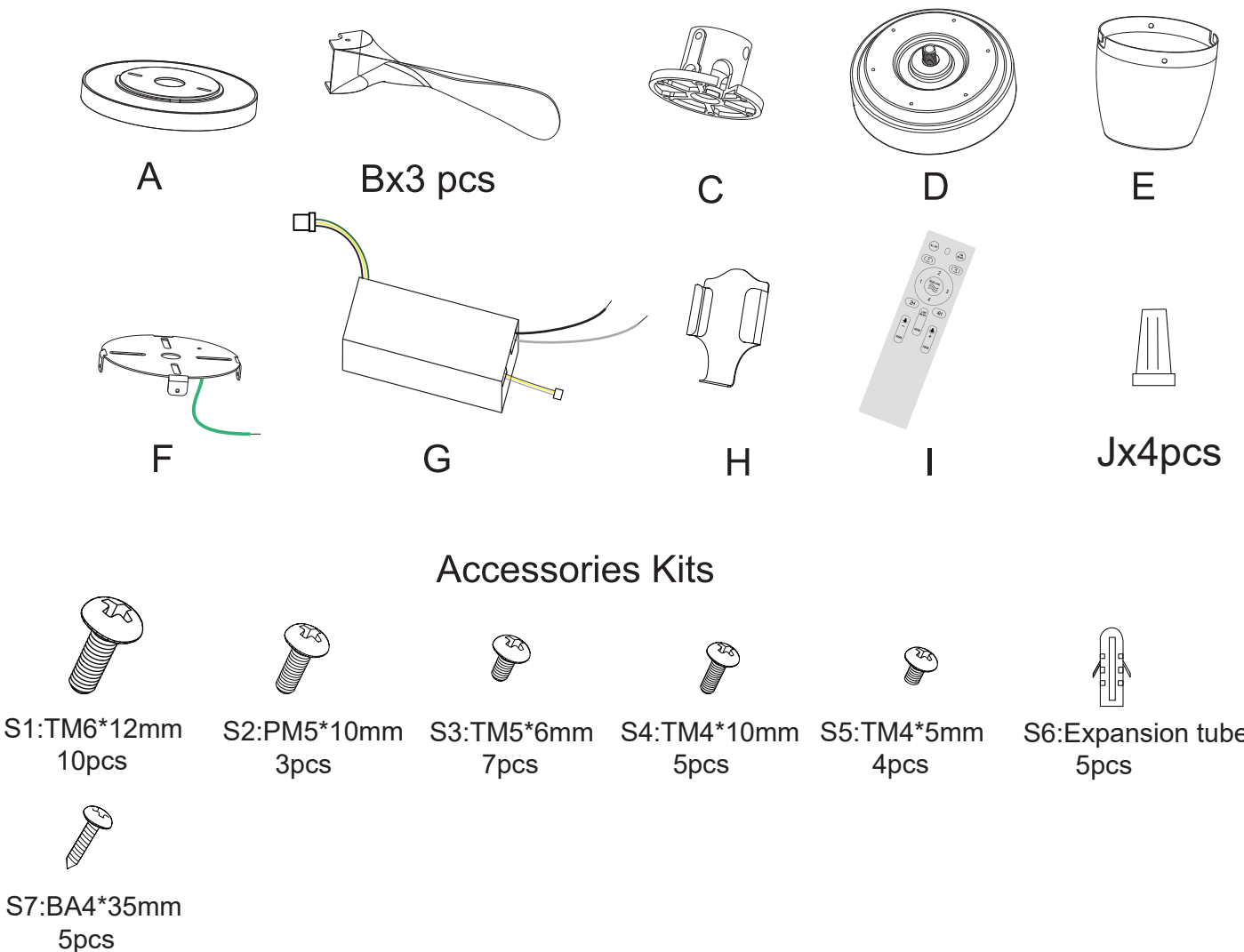
CRI : > 80

LED Lifespan : 50,000h

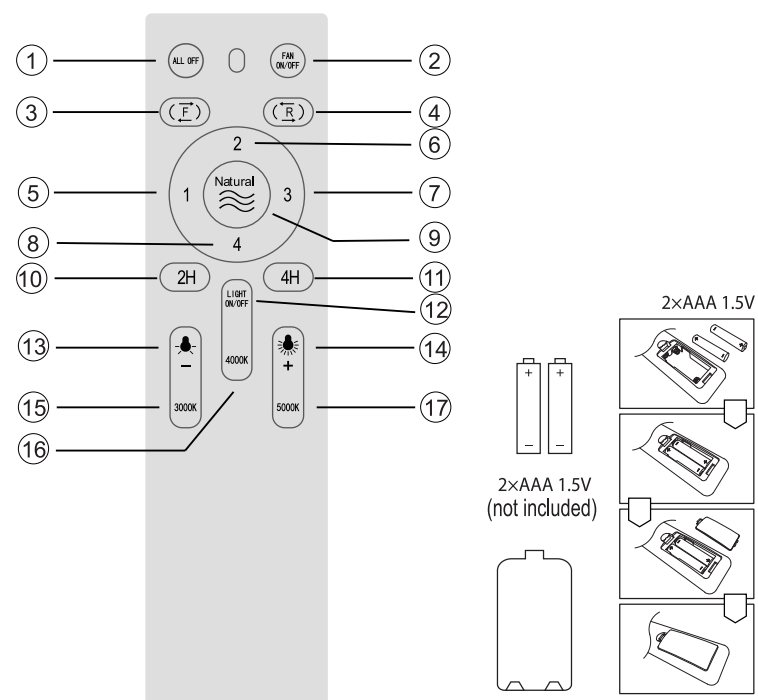
Maximum speed: 1000r/min



Package Content



Schematic diagram of remote control keys

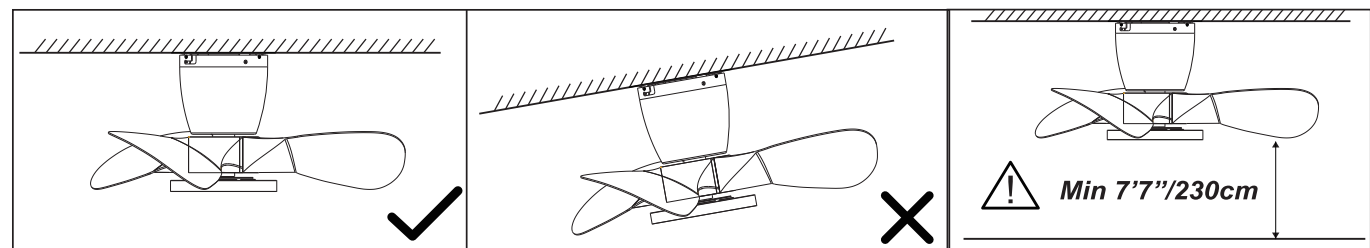


1. Turn off the main switch: turn off the lights and fans at the same time. Note that there is no turn on function, ONLY TURN OFF.
2. Turn on/off the fans.
3. The fan rotates to the right, for downward airflow.
4. The fan rotates to the left, for upward airflow.
5. The fan speed is in the 1st gear.
6. The fan speed is in the 2nd gear.
7. The fan speed is in the 3rd gear.
8. The fan speed is in the 4th gear.
9. Natural wind mode: imitating the natural wind, wind speed will automatically increase or decrease according to a certain frequency.
10. Timer 2H: turn off the fan and light after 2 hours.
11. Timer 4H: turn off the fan and light after 4 hours.
12. Turn on/off the lights.
13. Short press to decrease brightness in segments, 100%-70%-30%.
14. Short press to increase brightness in segments, 30%-70%-100%.
15. The light color temperature changes to 3000K with 100% brightness.
16. The light color temperature changes to 4000K with 100% brightness.
17. The light color temperature changes to 5000K with 100% brightness.

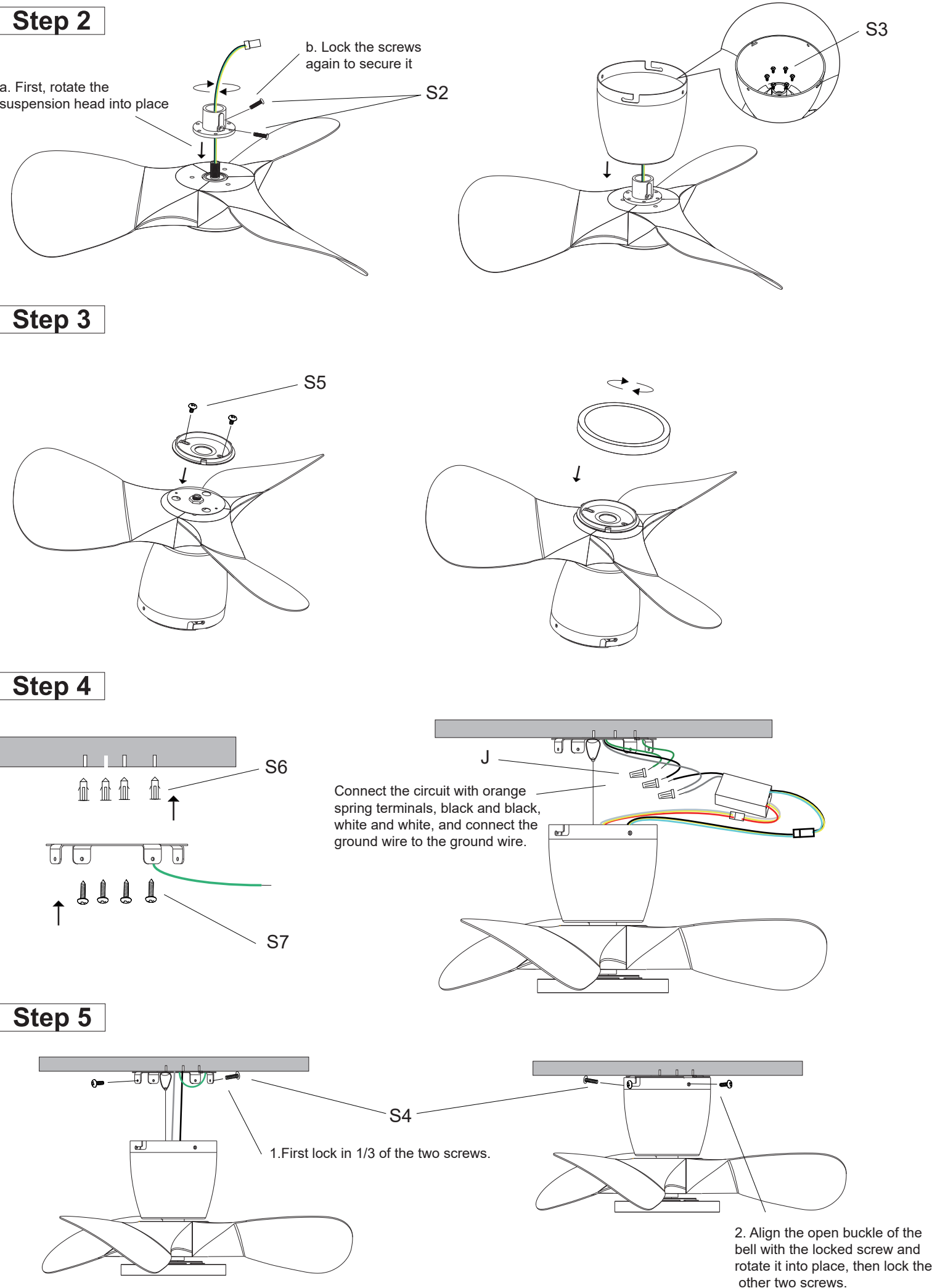
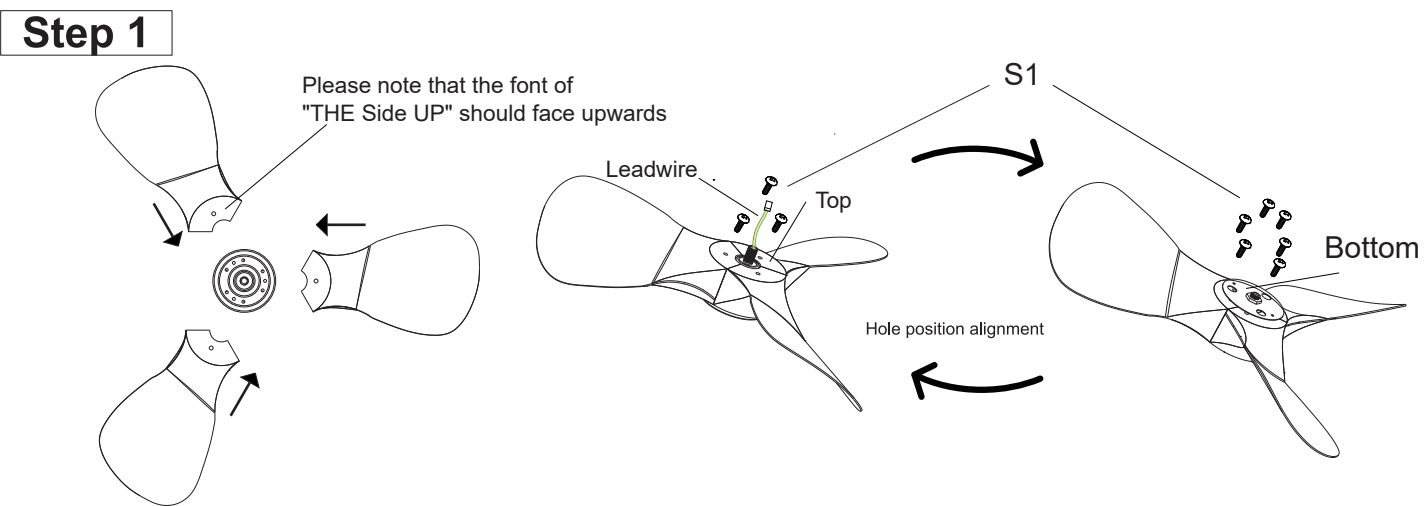
Installation Note

IMPORTANT!

1. Always shut off power to the circuit before starting installation work.
2. This appliance is not intended for use by persons (including children) with reduced physical, sensory or mental capabilities, or lack of experience and knowledge, unless they have been given supervision or instruction concerning use of the appliance by a person responsible for their safety. Children should be supervised to ensure that they do not play with the appliance. Cleaning and user maintenance shall not be made by children without supervision.
3. Before installing, make sure you have an electric drill with an M6 drill bit, a cross screwdriver, and a 10mm wrench on hand.
4. Must be installed on a solid wall surface, not on a plasterboard or a cracked wall.
5. It is not recommended to install this product on the installation box with machine screws, as there is a risk of insufficient load-bearing capacity.



Installation steps



正面

反面

FCC Warning

This device complies with part 15 of the FCC Rules. Operation is subject to the following two conditions: (1) This device may not cause harmful interference, and (2) this device must accept any interference received, including interference that may cause undesired operation.

Any Changes or modifications not expressly approved by the party responsible for compliance could void the user's authority to operate the equipment.

Note: This equipment has been tested and found to comply with the limits for a Class B digital device, pursuant to part 15 of the FCC Rules. These limits are designed to provide reasonable protection against harmful interference in a residential installation. This equipment generates uses and can radiate radio frequency energy and, if not installed and used in accordance with the instructions, may cause harmful interference to radio communications. However, there is no guarantee that interference will not occur in a particular installation. If this equipment does cause harmful interference to radio or television reception, which can be determined by turning the equipment off and on, the user is encouraged to try to correct the interference by one or more of the following measures:

- Reorient or relocate the receiving antenna.
- Increase the separation between the equipment and receiver.
- Connect the equipment into an outlet on a circuit different from that to which the receiver is connected.
- Consult the dealer or an experienced radio/TV technician for help.

The device has been evaluated to meet general RF exposure requirement. The device can be used in portable exposure condition without restriction.