

# 「User Instruction」

## Rhino Smart Water Valve

Model No.:RH-WV2021

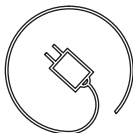


# A. INTRODUCTION

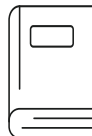
## 1. CONTENTS IN THE BOX



RHINO Water Valve\*1  
3/4" inch-NPT thread

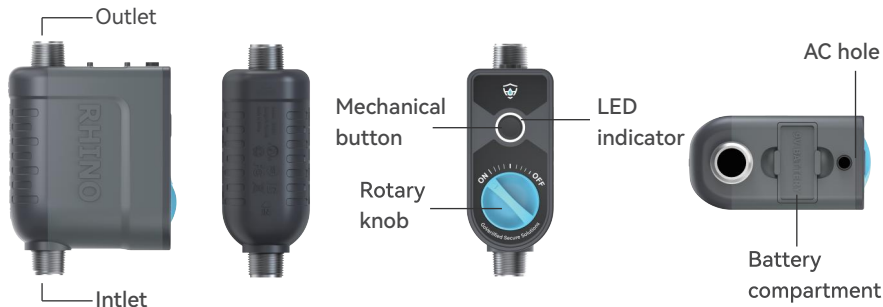


RHINO Water Valve\*1  
3/4" inch-NPT thread



User Manual\*1

## 2. PRODUCTS OVERVIEW



Description: Multi-functional Smart Home WiFi Water Valve

### **3. FUNCTIONS**

- \* Dual-mode (WiFi 2.4GHz & BLE) smart connection
- \* Remote control water valve
- \* Real-time water consumption, water temperature, flow rate, water pressure
- \* Changable-angle ball valve to flow control
- \* Built-in water meter with flow statistics function
- \* Three modes on the APP - home/away/disarm mode
- \* Trigger corresponding alarms and actions when preset conditions reached
- \* Manually open/close valve
- \* Low battery indicator
- \* External backup power
- \* Anti-scaling self-test function
- \* Water leakage alarm
- \* Water pipe leak detection

## **4. Specification Data**

- \* 3/4" NPT inlet
- \* 3/4" NPT outlet
- \* Product dimensions – L x W x H: 136X65X119.5mm (not include inlet/outlet screw)
- \* Power supply: external DC 12V, internal battery backup
- \* Operating voltage: DC 12V
- \* Battery type: 9V square laminated battery
- \* Working water pressure: 0 bar to 12 bar (0 PSI-180PSI)
- \* Flow rate: 0.5L/min to 30L/min (0.13GAL/min to 7.92GAL/min)
- \* Waterproof rating: IPX6
- \* Operating temperature: 1°C to 50°C (33.8°F to 122°F)
- \* Storage temperature: -20°C to 60°C (-4°F to 140°F)
- \* Product accuracy (%)  $\pm 10\%$

## B. INSTALLATION

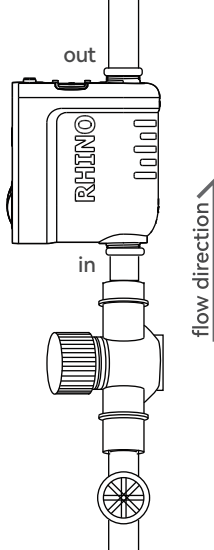


### 1. Valve Installation Notes

- \* Check the user guide before installation
- \* Install on a 0.75" mains water supply line (cold water only), Vertical installation is recommended
- \* Open main water supply and RHINO only after installation and commission.  
Opening sequence: open the main water valve first, then open the Rhino
- \* Must be installed after water meter, water shut-off , and pressure regulating valve (if applicable)
- \* Do not use the RHINO and adapter when the operating temperature is exceeded.
- \* AC power (100–240VAC–50/60 Hz) is required when connecting with WiFi
- \* **The installation requires a professional plumber to complete or have it installed under the guidance of a professional.**

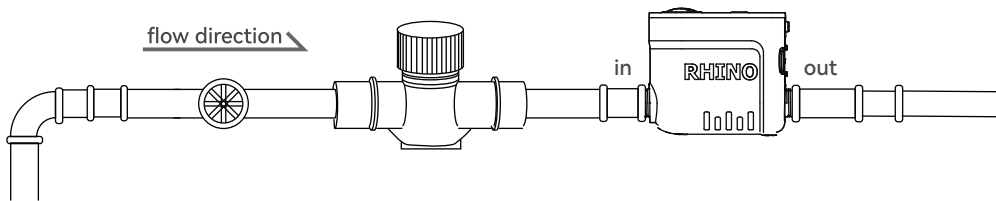
## Vertical Placement

(**Recommended**, accuracy of flow rate: 500ml/min)



## Horizontal Placement

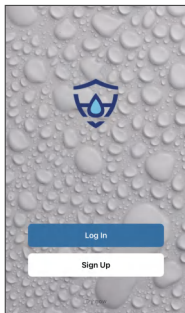
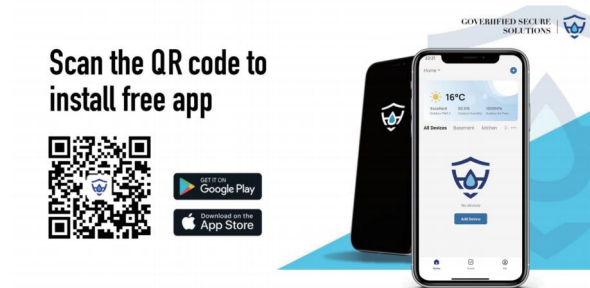
(accuracy of flow rate: 700ml/min)



## 2. App Installation

- \* Download the RhinoH App

Search for “RhinoH ” on Google Play or App Store or scan the QR code to download.



- \* Register your RhinoH account

Open the APP, select Set Up

Follow the prompts to register an account with your email .

**Note:**

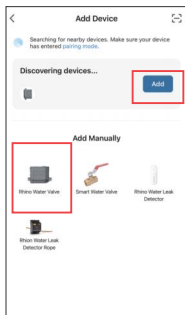
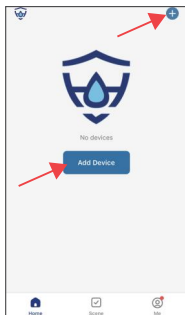
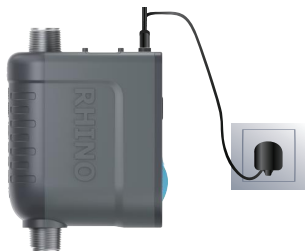
Ensure your country/region details are correct at this stage. You may be prompted to allow access your location. This allows the app to show weather information, and can still function if you choose to opt out.

### 3. Connect the RHINO

The device supports two distinct networking modes for configuration.

#### 1.EZ Mode

#### Step1: Power the Rhino

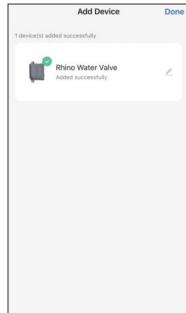
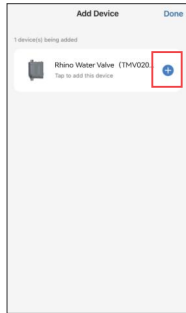


Step2: Open the App and tap "Add device" or "+" to add a new device

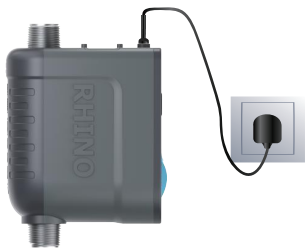
Step3: You will find a post and choose "Add"

Step4: Or tap the icon circled for connection

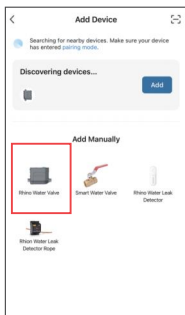
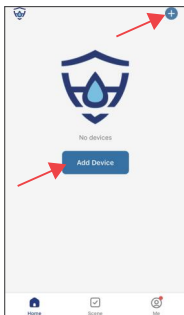
Step5: Wait few seconds when connecting, and you will get it connected.



## 2.AP Mode



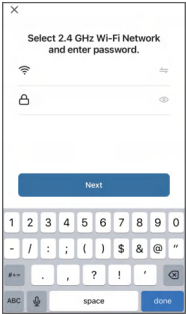
Step1: Power the Rhino



Step2: Open the App and tap "Add device" or "+" to add a new device

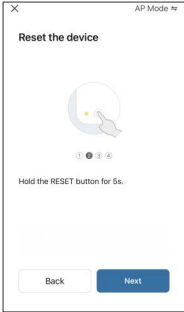
Step3: Tap the icon circled for connection

Step4: Select 2.4GHz Wi-Fi Network.

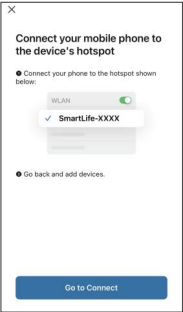


Step5: Reset the device.

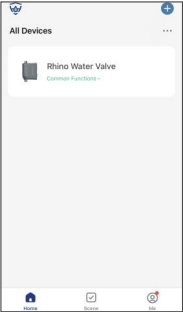
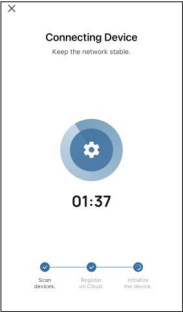
- \* Power on the device. Power off after 10s and then power on again.
- \* Hold the RESET button for 5s.
- \* Confirm that the indicator is blinking rapidly. Then take the next step.
- \* Hold the RESET button for 5s again until the indicator is blinking slowly.



Step6: Connect your mobile phone to the device's hotspot.



Step7: Wait few seconds when connecting, and you will get it connected.



## 4. Device Parameter



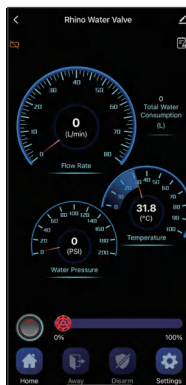
## 5. Device Programming

\* Open/close or adjust water flow

- 1) Press the button to open the valve, the button icon will switch to “ON” when it’s completed.  
Simultaneously, the indicator dial on the RHINO apparatus will also rotate to the “ON” position.
- 2) Press the button to close the valve, the button icon will switch to “OFF” when it’s completed.  
Simultaneously, the indicator dial on the RHINO apparatus will also rotate to the “OFF” position.

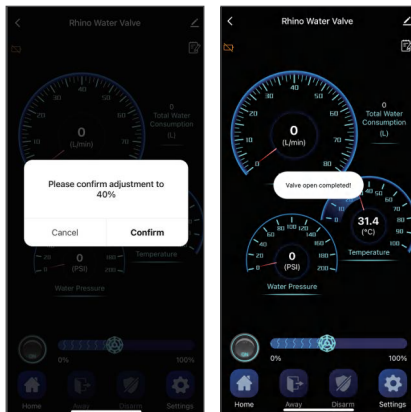


[1]





[2]

- 3) Adjust to angle of ball valve to increase or decrease the water flow. Drag the bar to any figure you want and confirm the setting. The valve will shorten to a specific value to slow down the current flow.  
e.g, drag the bar to 40% to slow down the flow.



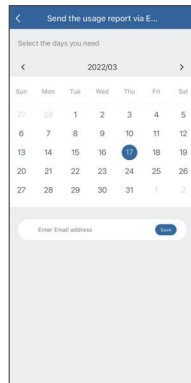
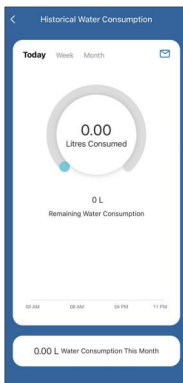
## \* Historical water consumption

- 1) Click the icon “

The home screen of the Rhino Water Valve app displays several gauges and a battery level indicator. At the top, it says "Rhino Water Valve". The gauges show:

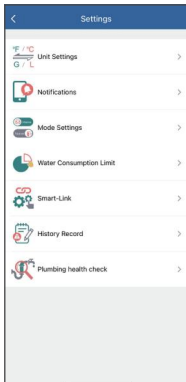
  - Flow Rate: 0 (L/min)
  - Temperature: 31.8 (°C)
  - Water Pressure: 0 (PSI)

At the bottom, there is a battery level indicator showing 79% and a row of icons for Home, Add, Delete, and Settings.



The "Send the usage report via Email" screen shows a calendar for March 2022. The date 17 is selected. Below the calendar, there is an input field for "Enter Email address" and a "Save" button.

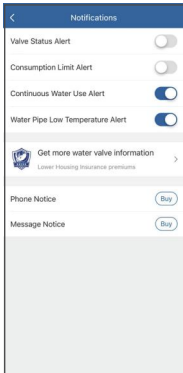
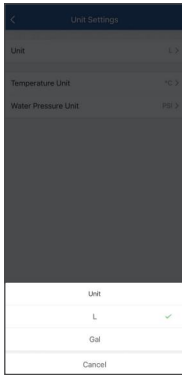
## C. SETTINGS



Press "Settings" icon to enter into the setting mode

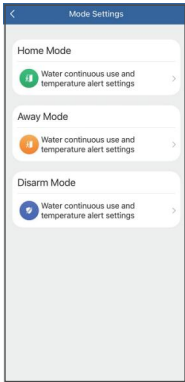
## 1) Unit Settings

You have the option to change the water measurement unit (L/GAL), temperature unit (°C/°F), and water pressure unit(KPa/PSI).



## 2) Notifications

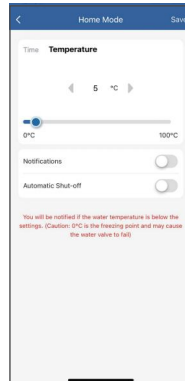
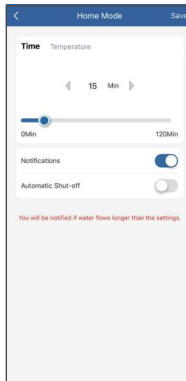
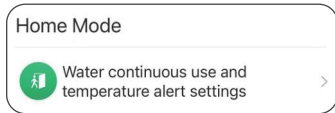
You have the option to enable/disable the notifications within the current status. (Home/Away/Disarm)



### 3) Mode Settings

There are three mode settings of RHINO – Home, Away, Disarm.

The default settings of Three modes:



## Away Mode



Water continuous use and  
temperature alert settings



**Away Mode** Save

Time Temperature

◀ 15 Min ▶

0Min 120Min

Notifications ☒

Automatic Shut-off ☒

You will be notified if water flows longer than the settings,  
the valve will shut-off automatically.

**Away Mode** Save

Time Temperature

◀ 5 °C ▶

0°C 100°C

Notifications ☐

Automatic Shut-off ☐

You will be notified if the water temperature is below the  
settings. (Caution: 0°C is the freezing point and may cause  
the water valve to fail)

## Disarm Mode



Water continuous use and  
temperature alert settings



**Disarm Mode** Save

Time Temperature

◀ 5 °C ▶

0°C 100°C

Notifications ☒

You will be notified if the water temperature is below the  
settings. (Caution: 0°C is the freezing point and may cause  
the water valve to fail)

**Disarm Mode** Save

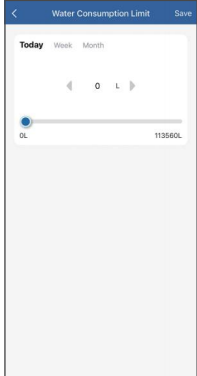
Time Temperature

◀ 15 Min ▶

0Min 120Min

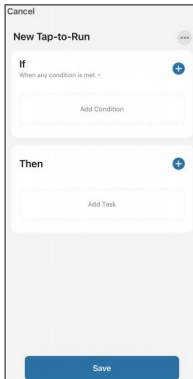
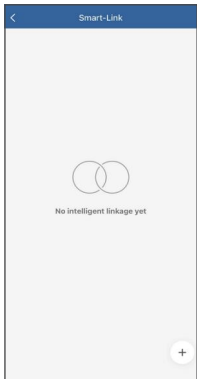
Notifications ☐

You will be notified if water flows longer than the settings.



#### 4) Water consumption limit

You may set up the water consumption limit per current day/week/month, click “save” for saving settings.



#### 5) Smart-Link

You could create a smart scenario by adding the condition, task and the effective period, click “save” for saving settings.



## 6) History Record

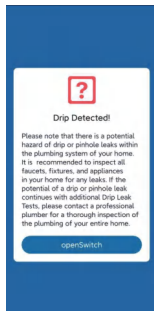
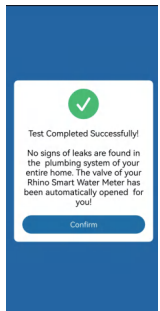
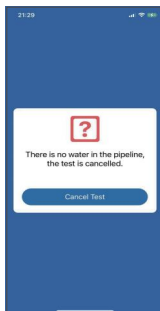
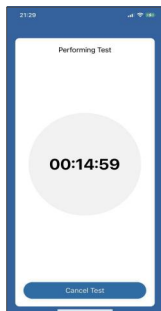
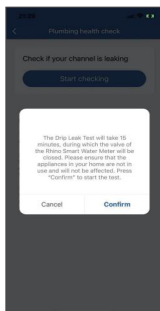
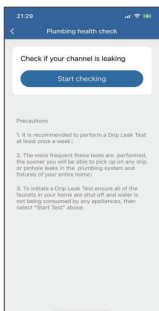
You can view the operation records, historical notifications and even the linkage records of RHINO.

## 7) Plumbing health check

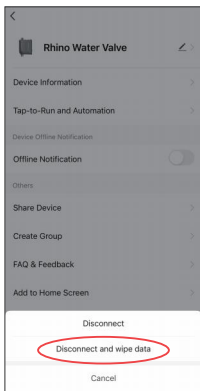
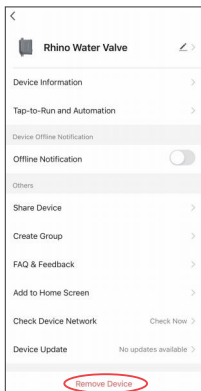
This Function is dedicated to identifying potential leaks within your household. Initiate the process by pressing “Start Checking” and confirming the test.

The Drip Leak Test will operate for a duration of 15 minutes. If there's no water in the pipeline, the test would be canceled automatically.

Upon detecting a water leak , "Drip Detected" notification will be issued.



## D. RESET THE DEVICE



### Option 1

Remove the device on the App

Press the “” icon and find the “**Remove Device**”

Select the “Disconnect and wipe data” and confirm.

Device reset to the factory default.

### Option 2

Step 1 Remove the battery compartment as well as the external power adapter

Step 2 Plug in the external power supply, press and hold the configuration button for 10s until the red and white LED lights flash alternately 3 times, then release.

Step 3 The white LED flashes rapidly which indicates that it is ready for pairing

## E. LED LIGHT INDICATION

- \* White LED light flashes quickly: ready to pair
- \* White LED light flashes slowly: Searching for connected WI-FI router
- \* White LED light is always on: the connection succeeded and valve is open
- \* Red LED light is always on: the connection succeeded and valve is closed
- \* No indicator light: built-in battery, external power supply power off
- \* Red LED light rapidly blink: water leakage alert

## F. TROUBLESHOOTING

Problem	Possible Cause	Possible Solution
Valve can not close	<ul style="list-style-type: none"><li>* anything stuck inside the pipe?</li><li>* the temperature is lower than 1°C (33.8°F) ?</li></ul>	<ul style="list-style-type: none"><li>* Clean the pipe</li><li>* Use the valve under working temperature</li></ul>
No LED indicator	<ul style="list-style-type: none"><li>* Is the external power connected?</li></ul>	<ul style="list-style-type: none"><li>* Check your electricity supply</li></ul>
White LED still blink after valve's connected	<ul style="list-style-type: none"><li>* Is the valve online and connected successfully</li></ul>	<ul style="list-style-type: none"><li>* Remove the device on App and retry the connection</li></ul>

## G. CERTIFICATE AND STANDARDS



NSF/ANSI/CAN 61

Drinking Water System Components – Health Effects.

Products certified to NSF/ANSI/CAN 61 comply with the health effects criteria in NSF/ANSI/CAN 600.

FCC Caution:

Any Changes or modifications not expressly approved by the party responsible for compliance could void the user's authority to operate the equipment.

This device complies with part 15 of the FCC Rules. Operation is subject to the following two conditions: (1) This device may not cause harmful interference, and (2) this device must accept any interference received, including interference that may cause undesired operation.

IMPORTANT NOTE:

Note: This equipment has been tested and found to comply with the limits for a Class B digital device, pursuant to part 15 of the FCC Rules. These limits are designed to provide reasonable protection against harmful interference in a residential installation. This equipment generates, uses and can radiate radio frequency energy and, if not installed and used in accordance with

the instructions, may cause harmful interference to radio communications. However, there is no guarantee that interference will not occur in a particular installation. If this equipment does cause harmful interference to radio or television reception, which can be determined by turning the equipment off and on, the user is encouraged to try to correct the interference by one or more of the following measures:

—Reorient or relocate the receiving antenna.

—Increase the separation between the equipment and receiver.

—Connect the equipment into an outlet on a circuit different from that to which the receiver is connected.

—Consult the dealer or an experienced radio/TV technician for help.

#### FCC Radiation Exposure Statement:

This equipment complies with FCC radiation exposure limits set forth for an uncontrolled environment. This equipment should be installed and operated with minimum distance 20cm between the radiator & your body.

## ISED Warning

This device complies with Innovation, Science, and Economic Development Canada licence-exempt RSS standard(s). Operation is subject to the following two conditions:

- (1) this device may not cause interference, and
- (2) this device must accept any interference, including interference that may cause undesired operation of the device.

Le présent appareil est conforme aux CNR d'Innovation, Sciences et Développement économique Canada applicables aux appareils radio exempts de licence. L'exploitation est autorisée aux deux conditions suivantes :

- (1) l'appareil ne doit pas produire de brouillage, et
- (2) l'utilisateur de l'appareil doit accepter tout brouillage radioélectrique subi, même si le brouillage est susceptible d'en compromettre le fonctionnement.

The device is compliance with RF exposure guidelines, users can obtain Canadian information on RF exposure and compliance. The minimum distance from body to use the device is 20cm.

Le présent appareil est conforme. Après examen de ce matériel aux limites d'intensité de champ RF, les utilisateurs peuvent sur l'exposition aux radiofréquences et la conformité and compliance d'acquérir les informations correspondantes. La distance minimale du corps à utiliser le dispositif est de 20cm.

## H. WARRANTY

### Rhino Smart Water Valve Limited Warranty

Rhino Smart Water Valve

Last Updated and Effective as of: January 1, 2024

LIMITED WARRANTY

GoVerified Secure Solutions

Limited Warranty

THIS LIMITED WARRANTY CONTAINS IMPORTANT INFORMATION ABOUT YOUR RIGHTS AND OBLIGATIONS, AS WELL AS LIMITATIONS AND EXCLUSIONS THAT MAY APPLY TO YOU. THE FOLLOWING IS THE COMPLETE WARRANTY FOR THE PRODUCTS AND SERVICES OF GOVERIIFIED SECURE SOLUTIONS, AND ITS SUBSIDIARIES AND AFFILIATES (COLLECTIVELY “GOVERIIFIED”), AND SUPERSEDES ALL OTHER WARRANTIES AND REPRESENTATIONS, WHETHER ORAL OR WRITTEN. EXCEPT AS EXPRESSLY SET FORTH HEREIN, NO OTHER WARRANTIES ARE MADE WITH RESPECT TO GOVERIIFIED PRODUCTS AND SERVICES AND GOVERIIFIED EXPRESSLY DISCLAIMS ALL WARRANTIES NOT STATED HEREIN, INCLUDING, TO THE EXTENT PERMITTED BY APPLICABLE LAW, ANY WARRANTY THAT MAY EXIST UNDER NATIONAL, STATE, PROVINCIAL OR LOCAL LAW INCLUDING, BUT NOT LIMITED TO, ANY IMPLIED WARRANTY OF NONINFRINGEMENT, MERCHANTABILITY OR FITNESS FOR A PARTICULAR PURPOSE. ALL WARRANTIES, WHETHER EXPRESS OR IMPLIED, ARE LIMITED TO THE PERIODS OF TIME SET FORTH HEREIN.

This Limited Warranty covers the Rhino Water Valve by GoVerified Secure Solutions (as defined below) contained in the Rhino Water Valve by GoVerified Secure Solutions. We reserve the right to change the terms of the Limited Warranty at any time, so please review the Limited Warranty each time prior to placing an order or otherwise acquiring any Rhino Water Valve by GoVerified Secure Solutions. Every time you place an order or otherwise acquire Products from GoVerified, the Limited Warranty in force at that time will apply between you and GoVerified. If you have any questions regarding this Limited Warranty, contact us at 905-604-5444 or visit [www.verified.com](http://www.verified.com)

#### 1. WHAT THIS LIMITED WARRANTY COVERS; PERIOD OF COVERAGE

GoVerified Secure Solutions, 2101 Teston Rd., Maple, ON, L6A 1R3, warrants to the owner of the enclosed Rhino Water Valve by GoVerified Secure Solutions contained in this box ("Product" or "Device") will be free from defects in materials and workmanship for a period of one (1) year from the date of delivery following the original retail purchase (collectively, the "Warranty Period"). If the Product fails to conform to this Limited Warranty during the Warranty Period, GoVerified will, at its sole discretion, either (a) repair or replace any defective Product or component; or (b) accept the return of the Product and refund the money actually paid by the original purchaser for the Product. Repair or replacement may be made with a new or refurbished product or components, at GoVerified's sole discretion. If the Product or a component incorporated within it is no longer available, GoVerified may, at GoVerified's sole discretion, replace the Product with a similar product of similar function. This is your sole and exclusive remedy for breach of this Limited Warranty. Any Product that has either been repaired or replaced under this Limited Warranty will be covered by the terms of this Limited Warranty for the longer of (a) ninety (90) days from the date of delivery of the repaired Product or replacement Product, or (b) the remaining Warranty Period. This Limited Warranty is transferable from the original purchaser to subsequent owners, but the Warranty Period will not be extended in duration or expanded in coverage for any such transfer.

## (1)TOTAL SATISFACTION RETURN POLICY

If you are the original purchaser of the Product and you are not satisfied with this Product for any reason, you may return it in its original condition within thirty (30) days of the original purchase and receive a full refund. You will be solely responsible for (and GoVeriified disclaims) any and all loss, liability, or damages, including to your wiring, plumbing, fixtures, electricity, water, Wi-Fi, home, product, product peripherals, computer, mobile device, and all other items, people, and pets in your home, resulting from the removal of the Product.

## (2)WARRANTY CONDITIONS; HOW TO GET SERVICE IF YOU WANT TO CLAIM UNDER THIS LIMITED WARRANTY

We will not provide any warranty coverage unless your claim is in compliance with all terms of this limited warranty statement and you follow proper return procedure. Before making a claim under this Limited Warranty, the owner of the Product must (a) notify GoVeriified of the intention to make a warranty claim by visiting [www.veriified.com](http://www.veriified.com) during the Warranty Period and providing a description of the alleged failure, and (b) comply with GoVeriified's return shipping instructions. GoVeriified will have no warranty obligations with respect to a returned Product if it determines, in its reasonable discretion after examination of the returned Product, that the Product is an Ineligible Product (defined below).

### (3)WHAT THIS LIMITED WARRANTY DOES NOT COVER

This Limited Warranty does not cover and is void with respect to the following (collectively "Ineligible Products"): (i) Products marked as "sample", "engineering sample" or "Not for Sale", or sold "AS IS"; (ii) Products that have been subject to: (a) modifications, alterations, tampering, or improper or lack of maintenance or repairs; (b) handling, storage, installation, testing, or use not in accordance with the User's Guide or other instructions provided by GoVeriified; (c) abuse or misuse of the Product; (d) breakdowns, fluctuations, or interruptions in electric power, water provided to the home, or the telecommunications network; (e) Acts of God, including but not limited to lightning, flood, tornado, earthquake, or hurricane; or (f) commercial use; (iii) any non- GoVeriified branded hardware products, even if packaged or sold with GoVeriified hardware; (iv) any malfunctions or damage caused by any non- GoVeriified branded products; and (v) any Products that have been self-installed or installed, maintained or repaired by any person who has not been designated a "Pro" from the "GoVeriified Network" or recommended by GoVeriified or is otherwise an unauthorized or recommended service provider. Products installed on anything other than potable water service lines shall be Ineligible Products (for example, irrigation lines, well systems or water containing metallic sediments). This Limited Warranty does not cover consumable parts, including batteries, unless damage is due to defects in materials or workmanship of the Product, or software (even if packaged or sold with the product). GoVeriified recommends that you use only authorized service providers for maintenance or repair. Unauthorized use of the Product or software can impair the Product's performance and may invalidate this Limited Warranty. This Limited Warranty does not cover data loss. PARTICULAR PURPOSE. TO THE MAXIMUM EXTENT PERMITTED BY APPLICABLE LAW, GOVERIIFIED ALSO LIMITS THE DURATION OF ANY APPLICABLE IMPLIED WARRANTIES OR CONDITIONS TO THE DURATION OF THIS LIMITED WARRANTY.

#### (4)DISCLAIMER OF WARRANTIES

EXCEPT AS STATED ABOVE IN THIS LIMITED WARRANTY, GOVERIIFIED DOES NOT EXTEND ANY EXPRESS WARRANTIES, REPRESENTATIONS, CONDITIONS OR GUARANTEES REGARDING GOVERIIFIED'S PRODUCT OR ONLINE SERVICES

("SERVICES") OR ANY RESULTS THEREOF. TO THE MAXIMUM EXTENT PERMITTED BY APPLICABLE LAW, GOVERIIFIED DISCLAIMS ALL EXPRESS, IMPLIED, AND STATUTORY WARRANTIES AND CONDITIONS WITH RESPECT TO THE PRODUCT AND SERVICES, INCLUDING THE IMPLIED WARRANTIES OF MERCHANTABILITY AND FITNESS FOR A

#### (5)LIMITATION OF DAMAGES

TO THE MAXIMUM EXTENT PERMITTED BY APPLICABLE LAW, THIS LIMITATION SHALL APPLY TO ANY AND ALL DAMAGES, REGARDLESS OF THE LEGAL THEORY ON WHICH THEY ARE ASSERTED (INCLUDING, WITHOUT LIMITATION, CONTRACT, BREACH OF CONTRACT OR TORT), AND REGARDLESS OF WHETHER GOVERIIFIED HAS BEEN ADVISED OF THE POSSIBILITY OF LOSS OR DAMAGES - UNLESS YOU PROVE THAT WE CAUSED DAMAGES TO YOU INTENTIONALLY. IN ADDITION TO THE ABOVE WARRANTY DISCLAIMERS, IN NO EVENT WILL GOVERIIFIED BE LIABLE FOR ANY CONSEQUENTIAL, INCIDENTAL, EXEMPLARY, OR SPECIAL DAMAGES, INCLUDING ANY DAMAGES FOR LOST DATA OR LOST PROFITS, ARISING FROM OR RELATING TO THIS LIMITED WARRANTY OR THE PRODUCT. TO THE MAXIMUM EXTENT PERMITTED BY APPLICABLE LAW, THE AMOUNT OF OUR TOTAL CUMULATIVE LIABILITY ARISING FROM OR RELATED TO THIS LIMITED WARRANTY OR THE PRODUCT WILL NOT EXCEED THE TOTAL PRICE ACTUALLY PAID FOR THE PRODUCT BY THE ORIGINAL PURCHASER. THIS ALLOCATION OF RISK IS REFLECTED IN THE PRICE CHARGED FOR THE PRODUCT AND SERVICES, IF ANY. YOU ACKNOWLEDGE THAT THE PRICE OF THE PRODUCT AND SERVICES WOULD BE MUCH GREATER IF WE UNDERTOOK MORE EXTENSIVE LIABILITY.

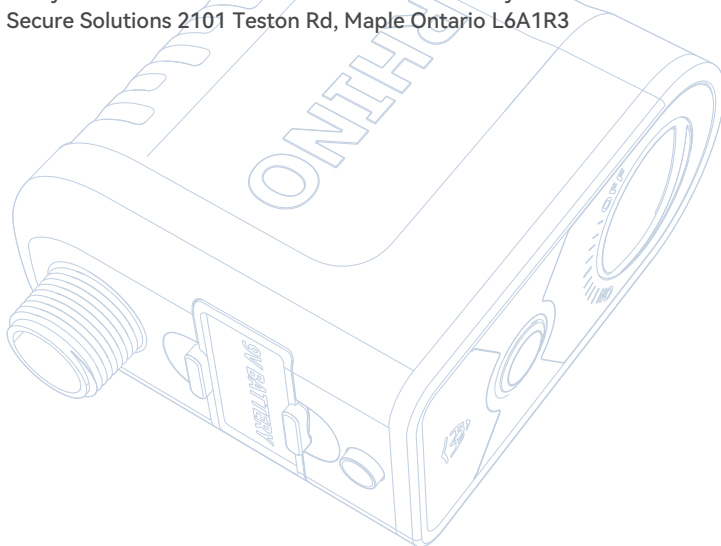
## (6)LIMITATION OF LIABILITY

THE SERVICES PROVIDE YOU INFORMATION ("PRODUCT INFORMATION") REGARDING YOUR GOVERIIFIED PRODUCTS OR OTHER PERIPHERALS CONNECTED TO YOUR PRODUCTS ("PRODUCT PERIPHERALS"). THE TYPE OF PRODUCT PERIPHERALS THAT MAY BE CONNECTED TO YOUR PRODUCT MAY CHANGE FROM TIME TO TIME. WITHOUT LIMITING THE GENERALITY OF THE DISCLAIMERS ABOVE, ALL PRODUCT INFORMATION IS PROVIDED FOR YOUR CONVENIENCE, "AS IS," AND "AS AVAILABLE." GOVERIIFIED DOES NOT REPRESENT, WARRANT, OR GUARANTEE THAT PRODUCT INFORMATION WILL BE AVAILABLE, ACCURATE, OR RELIABLE OR THAT PRODUCT INFORMATION OR USE OF THE SERVICES OR PRODUCT WILL PROVIDE PROTECTION IN OR TO YOUR HOME. YOU USE ALL PRODUCT INFORMATION, THE SERVICES, AND THE PRODUCT AT YOUR OWN DISCRETION AND RISK. YOU WILL BE SOLELY RESPONSIBLE FOR (AND GOVERIIFIED DISCLAIMS RESPONSIBILITY FOR) ANY AND ALL LOSS, LIABILITY, OR DAMAGES, INCLUDING TO YOUR WIRING, PLUMBING, WI-FI, INTERNET, FIXTURES, ELECTRICITY, WATER, HOME, PRODUCT, PRODUCT PERIPHERALS, COMPUTER, MOBILE DEVICE, AND ALL OTHER ITEMS, PEOPLE, AND PETS IN YOUR HOME, RESULTING FROM YOUR USE OF THE PRODUCT INFORMATION, SERVICES, DATA ALARMS OR PRODUCT. PRODUCT INFORMATION PROVIDED BY THE SERVICES IS NOT INTENDED AS A SUBSTITUTE FOR DIRECT MEANS OF OBTAINING THE INFORMATION OR AS A SUBSTITUTE FOR EMERGENCY SERVICES. FOR EXAMPLE, A NOTIFICATION PROVIDED THROUGH THE SERVICE IS NOT INTENDED AS A SUBSTITUTE FOR AUDIBLE AND VISIBLE INDICATIONS IN THE HOME AND ON THE PRODUCT.

## (7)YOUR RIGHTS AND THIS LIMITED WARRANTY

This Limited Warranty gives you specific legal rights. You may also have other legal rights that vary by state, province, nation or jurisdiction. Likewise, some of the limitations in this Limited Warranty may not apply in certain states, provinces, nations or jurisdictions. The terms of this Limited Warranty will apply to the extent permitted by applicable law. For a full description of your legal right's you should refer to the laws applicable in your jurisdiction and you may wish to contact a relevant consumer advisory service.

GoVerified Secure Solutions 2101 Teston Rd, Maple Ontario L6A1R3



PRESENTED BY  
**VERIFIEDH**