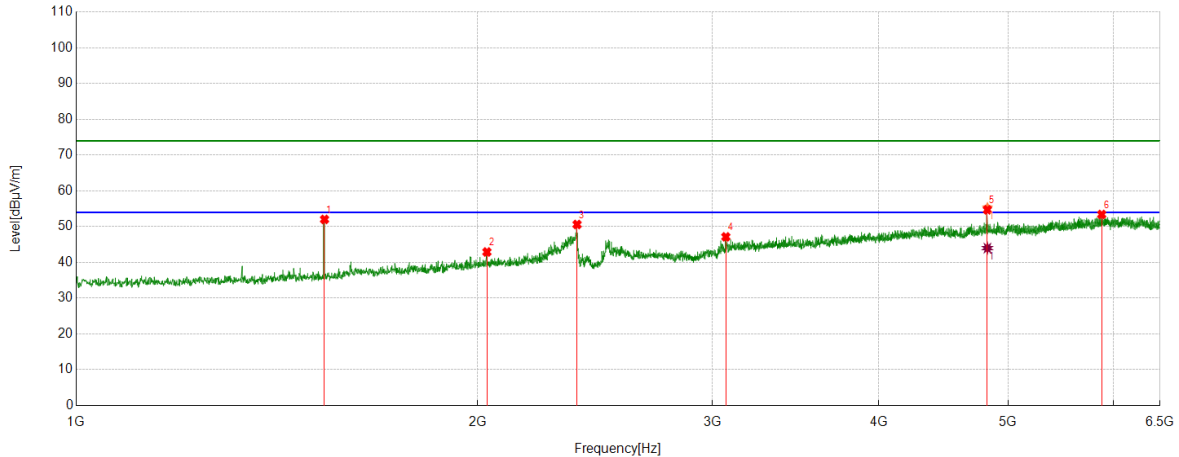


Part 1: 1GHz~6.5GHz

HARMONICS AND SPURIOUS EMISSIONS

Test Mode	Channel	Polarization	Verdict
11B	LCH	Horizontal	PASS



PK Result:

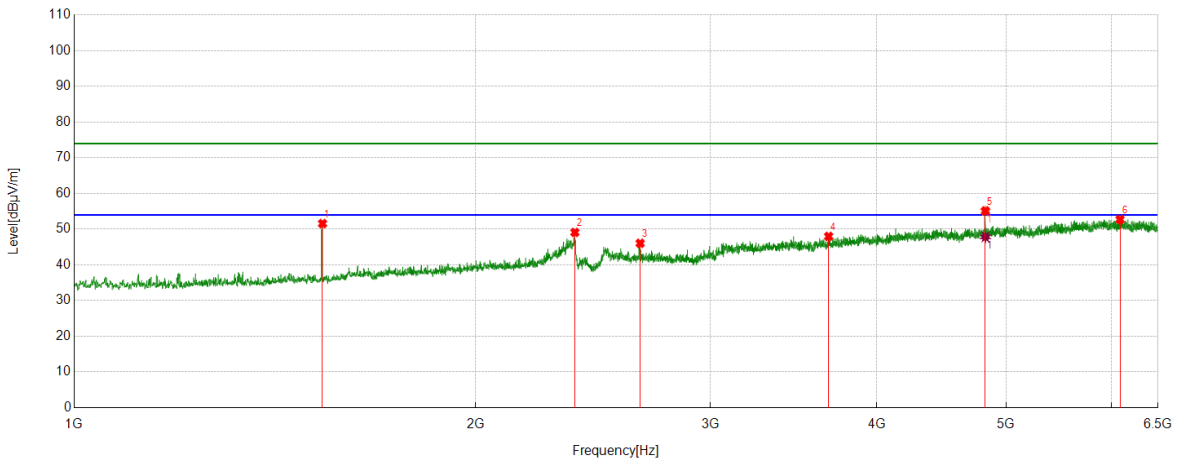
No.	Frequency	Reading Level	Correct Factor	Result	Limit	Margin	Remark
	[MHz]	[dBuV]	[dB/m]	[dBuV/m]	[dBuV/m]	[dB]	
1	1535.6295	52.65	-0.62	52.03	74.00	-21.97	Horizontal
2	2032.7541	38.73	4.19	42.92	74.00	-31.08	Horizontal
3	2375.1719	45.78	4.83	50.61	74.00	-23.39	Horizontal
4	3071.0089	37.95	9.20	47.15	74.00	-26.85	Horizontal
5	4824.3530	39.04	15.67	54.71	74.00	-19.29	Horizontal
6	5877.0471	35.68	17.73	53.41	74.00	-20.59	Horizontal

AV Result:

No.	Frequency	Reading Level	Correct Factor	Result	Limit	Margin	Remark
	[MHz]	[dBuV]	[dB/m]	[dBuV/m]	[dBuV/m]	[dB]	
1	4824.3530	28.33	15.67	44.00	54.00	-10.00	Horizontal

- Note: 1. Measurement = Reading Level + Correct Factor,
Correct Factor = Antenna Factor + Loss (Cable + Filter) – Amplifier Gain.
2. If Peak Result complies with AV limit, AV Result is deemed to comply with AV limit.
3. Test setup: RBW: 1 MHz, VBW: 3 MHz, Sweep time: auto.
4. Peak: Peak detector.
5. For below 3GHz part, filter losses were only considered in the spurious frequency bands and the authorized band was not corrected for Band Reject Filter losses.
6. Only the worst case emission was recorded, if it complies with the limit, the other emissions deemed to comply with the limit.

Test Mode	Channel	Polarization	Verdict
11B	LCH	Vertical	PASS



PK Result:

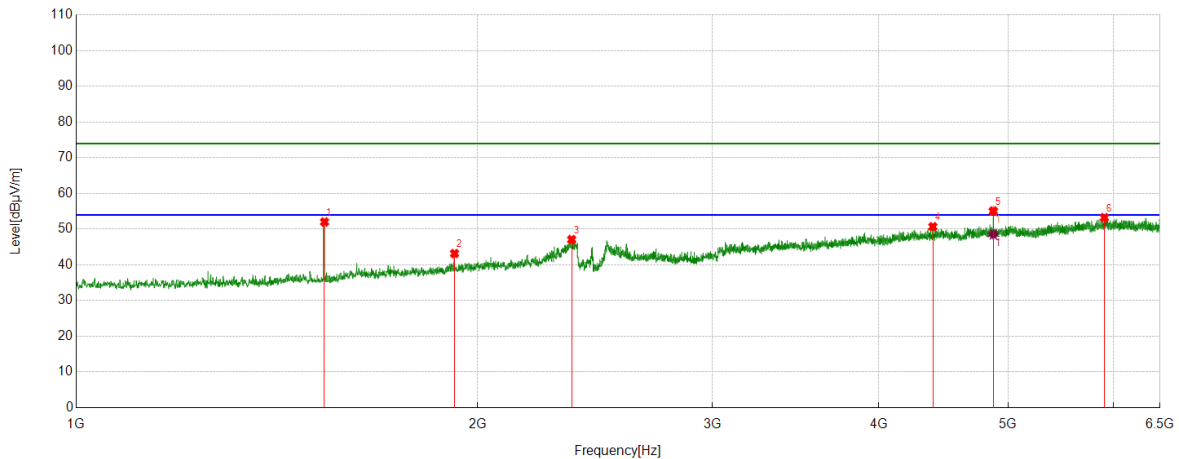
No.	Frequency	Reading Level	Correct Factor	Result	Limit	Margin	Remark
	[MHz]	[dBuV]	[dB/m]	[dBuV/m]	[dBuV/m]	[dB]	
1	1535.6295	52.19	-0.62	51.57	74.00	-22.43	Vertical
2	2374.4843	44.28	4.82	49.10	74.00	-24.90	Vertical
3	2657.7697	39.93	6.12	46.05	74.00	-27.95	Vertical
4	3680.2100	36.26	11.72	47.98	74.00	-26.02	Vertical
5	4824.3530	39.45	15.67	55.12	74.00	-18.88	Vertical
6	6086.7608	34.60	18.12	52.72	74.00	-21.28	Vertical

AV Result:

No.	Frequency	Reading Level	Correct Factor	Result	Limit	Margin	Remark
	[MHz]	[dBuV]	[dB/m]	[dBuV/m]	[dBuV/m]	[dB]	
1	4824.3530	32.16	15.67	47.83	54.00	-6.17	Vertical

- Note: 1. Measurement = Reading Level + Correct Factor,
Correct Factor = Antenna Factor + Loss (Cable + Filter) – Amplifier Gain.
2. If Peak Result complies with AV limit, AV Result is deemed to comply with AV limit.
3. Test setup: RBW: 1 MHz, VBW: 3 MHz, Sweep time: auto.
4. Peak: Peak detector.
5. For below 3GHz part, filter losses were only considered in the spurious frequency bands and the authorized band was not corrected for Band Reject Filter losses.
6. Only the worst case emission was recorded, if it complies with the limit, the other emissions deemed to comply with the limit.

Test Mode	Channel	Polarization	Verdict
11B	MCH	Horizontal	PASS



PK Result:

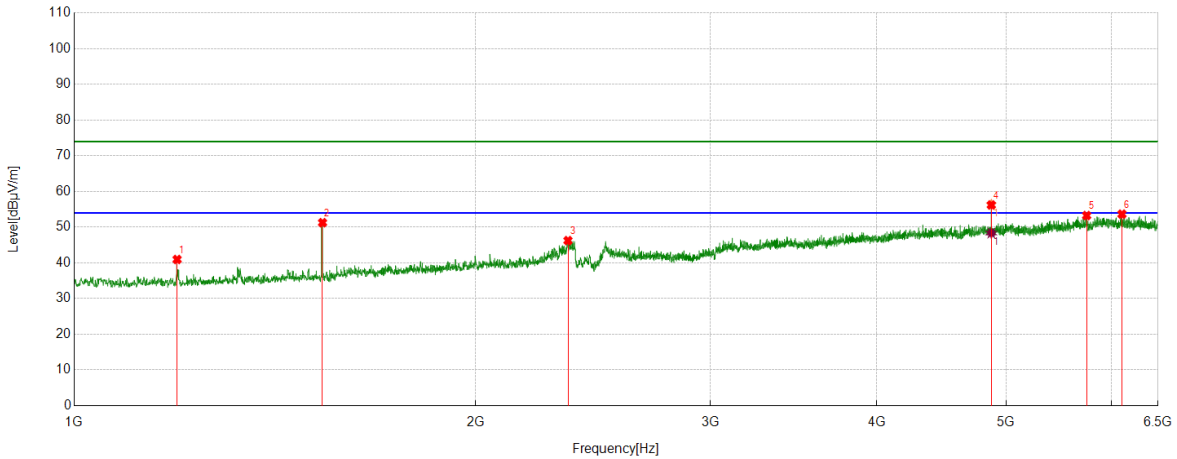
No.	Frequency	Reading Level	Correct Factor	Result	Limit	Margin	Remark
	[MHz]	[dBuV]	[dB/m]	[dBuV/m]	[dBuV/m]	[dB]	
1	1535.6295	52.65	-0.62	52.03	74.00	-21.97	Horizontal
2	1922.0528	40.12	3.06	43.18	74.00	-30.82	Horizontal
3	2353.1691	42.32	4.77	47.09	74.00	-26.91	Horizontal
4	4390.4863	36.88	13.81	50.69	74.00	-23.31	Horizontal
5	4873.8592	40.02	15.08	55.10	74.00	-18.90	Horizontal
6	5904.5506	35.21	18.04	53.25	74.00	-20.75	Horizontal

AV Result:

No.	Frequency	Reading Level	Correct Factor	Result	Limit	Margin	Remark
	[MHz]	[dBuV]	[dB/m]	[dBuV/m]	[dBuV/m]	[dB]	
1	4873.8592	33.44	15.08	48.52	54.00	-5.48	Horizontal

- Note: 1. Measurement = Reading Level + Correct Factor,
Correct Factor = Antenna Factor + Loss (Cable + Filter) – Amplifier Gain.
2. If Peak Result complies with AV limit, AV Result is deemed to comply with AV limit.
3. Test setup: RBW: 1 MHz, VBW: 3 MHz, Sweep time: auto.
4. Peak: Peak detector.
5. For below 3GHz part, filter losses were only considered in the spurious frequency bands and the authorized band was not corrected for Band Reject Filter losses.
6. Only the worst case emission was recorded, if it complies with the limit, the other emissions deemed to comply with the limit.

Test Mode	Channel	Polarization	Verdict
11B	MCH	Vertical	PASS



PK Result:

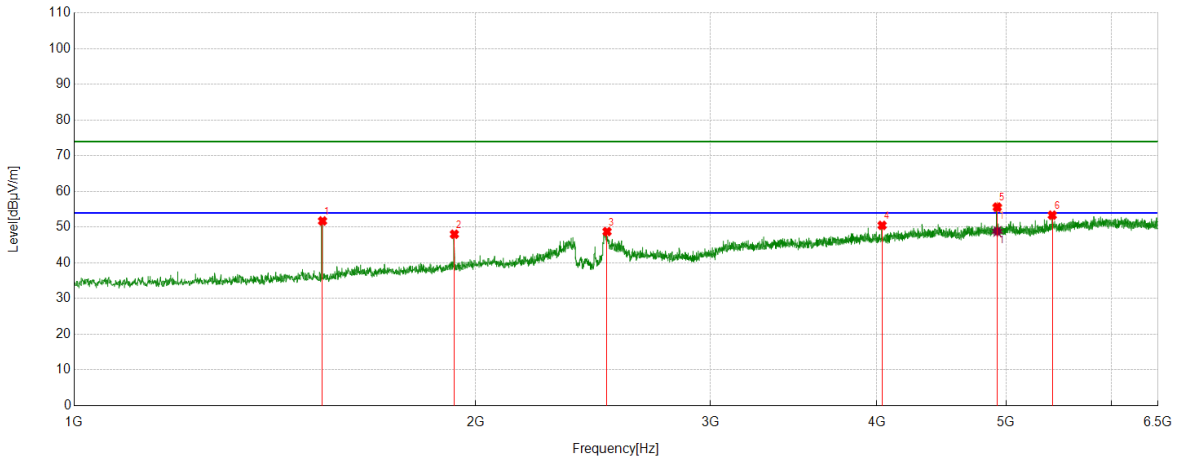
No.	Frequency	Reading Level	Correct Factor	Result	Limit	Margin	Remark
	[MHz]	[dBuV]	[dB/m]	[dBuV/m]	[dBuV/m]	[dB]	
1	1194.5868	43.17	-2.21	40.96	74.00	-33.04	Vertical
2	1535.6295	51.88	-0.62	51.26	74.00	-22.74	Vertical
3	2346.2933	41.40	4.85	46.25	74.00	-27.75	Vertical
4	4873.8592	41.14	15.08	56.22	74.00	-17.78	Vertical
5	5746.4058	35.53	17.73	53.26	74.00	-20.74	Vertical
6	6107.3884	35.59	18.06	53.65	74.00	-20.35	Vertical

AV Result:

No.	Frequency	Reading Level	Correct Factor	Result	Limit	Margin	Remark
	[MHz]	[dBuV]	[dB/m]	[dBuV/m]	[dBuV/m]	[dB]	
1	4873.8592	33.28	15.08	48.36	54.00	-5.64	Vertical

- Note: 1. Measurement = Reading Level + Correct Factor,
Correct Factor = Antenna Factor + Loss (Cable + Filter) – Amplifier Gain.
2. If Peak Result complies with AV limit, AV Result is deemed to comply with AV limit.
3. Test setup: RBW: 1 MHz, VBW: 3 MHz, Sweep time: auto.
4. Peak: Peak detector.
5. For below 3GHz part, filter losses were only considered in the spurious frequency bands and the authorized band was not corrected for Band Reject Filter losses.
6. Only the worst case emission was recorded, if it complies with the limit, the other emissions deemed to comply with the limit.

Test Mode	Channel	Polarization	Verdict
11B	HCH	Horizontal	PASS



PK Result:

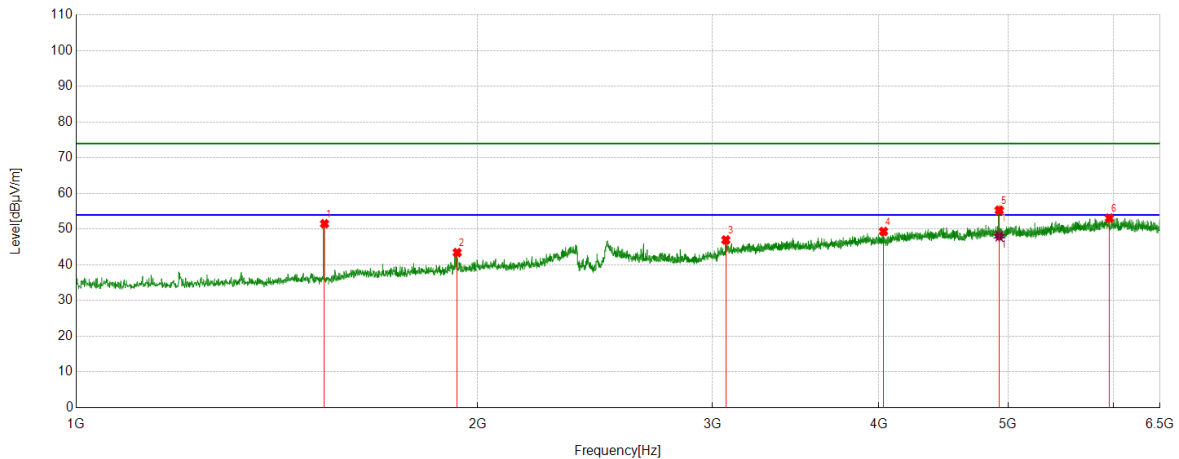
No.	Frequency	Reading Level	Correct Factor	Result	Limit	Margin	Remark
	[MHz]	[dBuV]	[dB/m]	[dBuV/m]	[dBuV/m]	[dB]	
1	1535.6295	52.36	-0.62	51.74	74.00	-22.26	Horizontal
2	1928.2410	45.11	2.92	48.03	74.00	-25.97	Horizontal
3	2509.9387	42.85	5.91	48.76	74.00	-25.24	Horizontal
4	4036.3795	38.07	12.43	50.50	74.00	-23.50	Horizontal
5	4924.0530	40.28	15.34	55.62	74.00	-18.38	Horizontal
6	5414.9894	36.33	17.03	53.36	74.00	-20.64	Horizontal

AV Result:

No.	Frequency	Reading Level	Correct Factor	Result	Limit	Margin	Remark
	[MHz]	[dBuV]	[dB/m]	[dBuV/m]	[dBuV/m]	[dB]	
1	4924.0530	33.48	15.34	48.82	54.00	-5.18	Horizontal

- Note: 1. Measurement = Reading Level + Correct Factor,
Correct Factor = Antenna Factor + Loss (Cable + Filter) – Amplifier Gain.
2. If Peak Result complies with AV limit, AV Result is deemed to comply with AV limit.
3. Test setup: RBW: 1 MHz, VBW: 3 MHz, Sweep time: auto.
4. Peak: Peak detector.
5. For below 3GHz part, filter losses were only considered in the spurious frequency bands and the authorized band was not corrected for Band Reject Filter losses.
6. Only the worst case emission was recorded, if it complies with the limit, the other emissions deemed to comply with the limit.

Test Mode	Channel	Polarization	Verdict
11B	HCH	Vertical	PASS



PK Result:

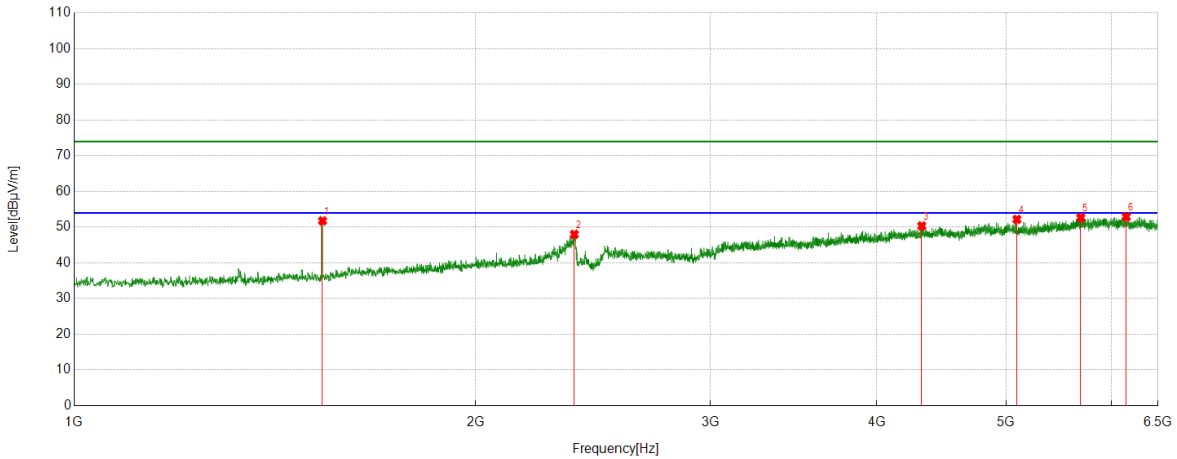
No.	Frequency	Reading Level	Correct Factor	Result	Limit	Margin	Remark
	[MHz]	[dBuV]	[dB/m]	[dBuV/m]	[dBuV/m]	[dB]	
1	1535.6295	52.15	-0.62	51.53	74.00	-22.47	Vertical
2	1930.9914	40.58	2.87	43.45	74.00	-30.55	Vertical
3	3071.0089	37.77	9.20	46.97	74.00	-27.03	Vertical
4	4032.2540	36.90	12.47	49.37	74.00	-24.63	Vertical
5	4924.0530	39.98	15.34	55.32	74.00	-18.68	Vertical
6	5955.4319	34.58	18.52	53.10	74.00	-20.90	Vertical

AV Result:

No.	Frequency	Reading Level	Correct Factor	Result	Limit	Margin	Remark
	[MHz]	[dBuV]	[dB/m]	[dBuV/m]	[dBuV/m]	[dB]	
1	4924.0530	32.66	15.34	48.00	54.00	-6.00	Vertical

- Note: 1. Measurement = Reading Level + Correct Factor,
Correct Factor = Antenna Factor + Loss (Cable + Filter) – Amplifier Gain.
2. If Peak Result complies with AV limit, AV Result is deemed to comply with AV limit.
3. Test setup: RBW: 1 MHz, VBW: 3 MHz, Sweep time: auto.
4. Peak: Peak detector.
5. For below 3GHz part, filter losses were only considered in the spurious frequency bands and the authorized band was not corrected for Band Reject Filter losses.
6. Only the worst case emission was recorded, if it complies with the limit, the other emissions deemed to comply with the limit.

Test Mode	Channel	Polarization	Verdict
11G	LCH	Horizontal	PASS

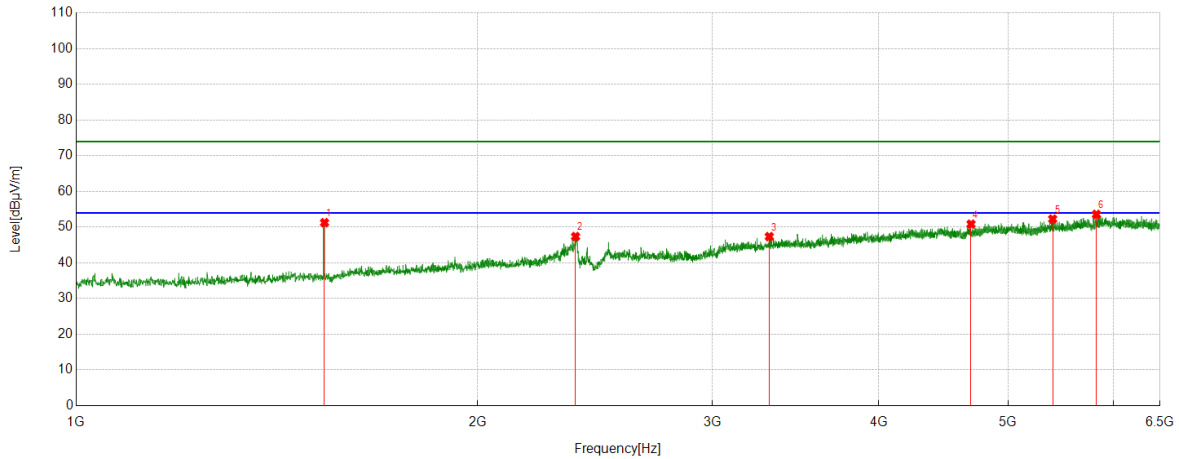


PK Result:

No.	Frequency	Reading Level	Correct Factor	Result	Limit	Margin	Remark
	[MHz]	[dBuV]	[dB/m]	[dBuV/m]	[dBuV/m]	[dB]	
1	1535.6295	52.40	-0.62	51.78	74.00	-22.22	Horizontal
2	2372.4216	43.19	4.82	48.01	74.00	-25.99	Horizontal
3	4322.4153	36.88	13.48	50.36	74.00	-23.64	Horizontal
4	5093.8867	36.62	15.57	52.19	74.00	-21.81	Horizontal
5	5687.9610	35.27	17.39	52.66	74.00	-21.34	Horizontal
6	6153.4567	34.36	18.55	52.91	74.00	-21.09	Horizontal

- Note: 1. Measurement = Reading Level + Correct Factor,
Correct Factor = Antenna Factor + Loss (Cable + Filter) – Amplifier Gain.
2. If Peak Result complies with AV limit, AV Result is deemed to comply with AV limit.
3. Test setup: RBW: 1 MHz, VBW: 3 MHz, Sweep time: auto.
4. Peak: Peak detector.
5. For below 3GHz part, filter losses were only considered in the spurious frequency bands and the authorized band was not corrected for Band Reject Filter losses.
6. Only the worst case emission was recorded, if it complies with the limit, the other emissions deemed to comply with the limit.

Test Mode	Channel	Polarization	Verdict
11G	LCH	Vertical	PASS

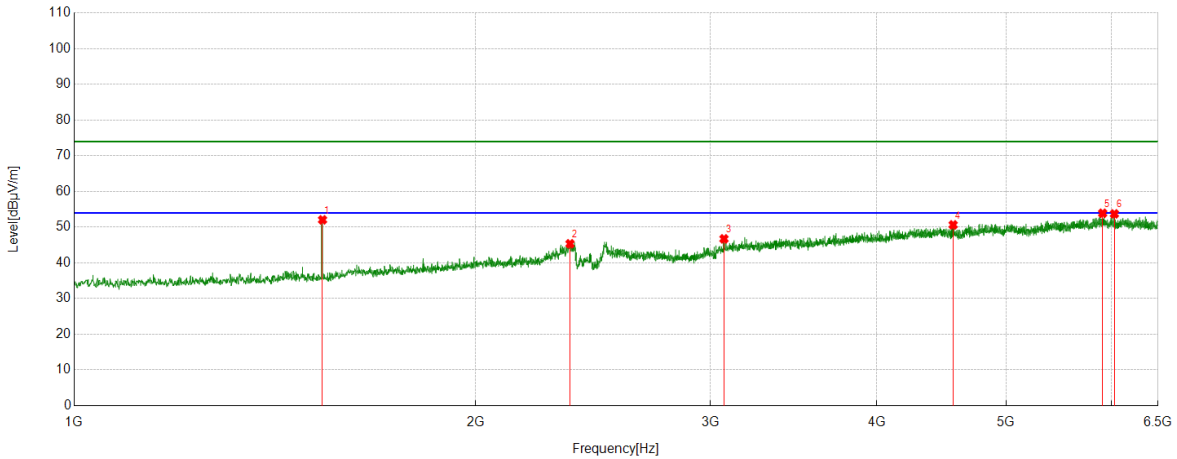


PK Result:

No.	Frequency	Reading Level	Correct Factor	Result	Limit	Margin	Remark
	[MHz]	[dBuV]	[dB/m]	[dBuV/m]	[dBuV/m]	[dB]	
1	1535.6295	51.88	-0.62	51.26	74.00	-22.74	Vertical
2	2368.9836	42.58	4.80	47.38	74.00	-26.62	Vertical
3	3310.2888	36.78	10.58	47.36	74.00	-26.64	Vertical
4	4690.2738	35.17	15.68	50.85	74.00	-23.15	Vertical
5	5399.8625	35.38	16.90	52.28	74.00	-21.72	Vertical
6	5823.4154	34.91	18.67	53.58	74.00	-20.42	Vertical

- Note: 1. Measurement = Reading Level + Correct Factor,
Correct Factor = Antenna Factor + Loss (Cable + Filter) – Amplifier Gain.
2. If Peak Result complies with AV limit, AV Result is deemed to comply with AV limit.
3. Test setup: RBW: 1 MHz, VBW: 3 MHz, Sweep time: auto.
4. Peak: Peak detector.
5. For below 3GHz part, filter losses were only considered in the spurious frequency bands and the authorized band was not corrected for Band Reject Filter losses.
6. Only the worst case emission was recorded, if it complies with the limit, the other emissions deemed to comply with the limit.

Test Mode	Channel	Polarization	Verdict
11G	MCH	Horizontal	PASS

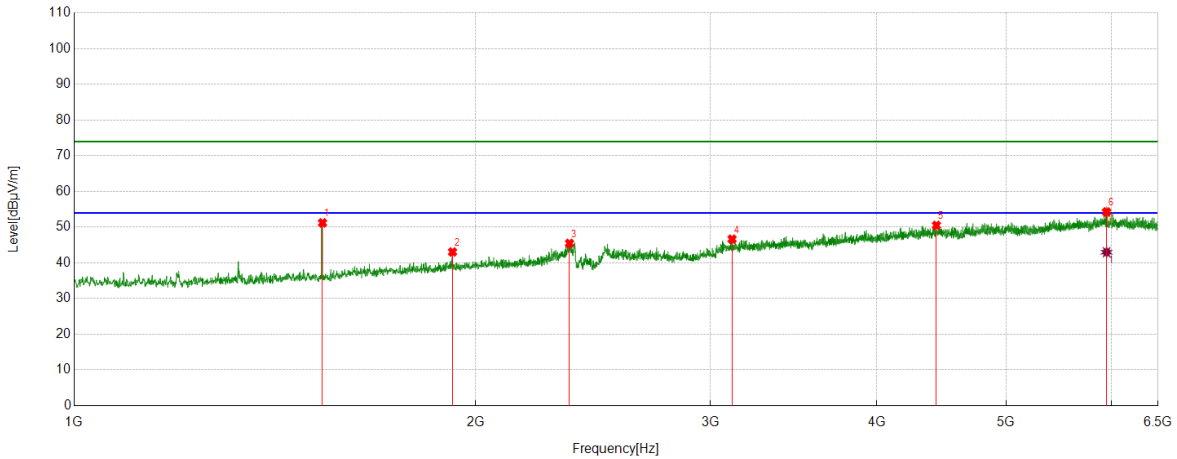


PK Result:

No.	Frequency	Reading Level	Correct Factor	Result	Limit	Margin	Remark
	[MHz]	[dBuV]	[dB/m]	[dBuV/m]	[dBuV/m]	[dB]	
1	1535.6295	52.68	-0.62	52.06	74.00	-21.94	Horizontal
2	2354.5443	40.58	4.77	45.35	74.00	-28.65	Horizontal
3	3071.6965	37.46	9.27	46.73	74.00	-27.27	Horizontal
4	4563.0704	36.58	14.07	50.65	74.00	-23.35	Horizontal
5	5907.3009	35.79	18.11	53.90	74.00	-20.10	Horizontal
6	6028.3160	35.79	17.94	53.73	74.00	-20.27	Horizontal

- Note: 1. Measurement = Reading Level + Correct Factor,
Correct Factor = Antenna Factor + Loss (Cable + Filter) – Amplifier Gain.
2. If Peak Result complies with AV limit, AV Result is deemed to comply with AV limit.
3. Test setup: RBW: 1 MHz, VBW: 3 MHz, Sweep time: auto.
4. Peak: Peak detector.
5. For below 3GHz part, filter losses were only considered in the spurious frequency bands and the authorized band was not corrected for Band Reject Filter losses.
6. Only the worst case emission was recorded, if it complies with the limit, the other emissions deemed to comply with the limit.

Test Mode	Channel	Polarization	Verdict
11G	MCH	Vertical	PASS



PK Result:

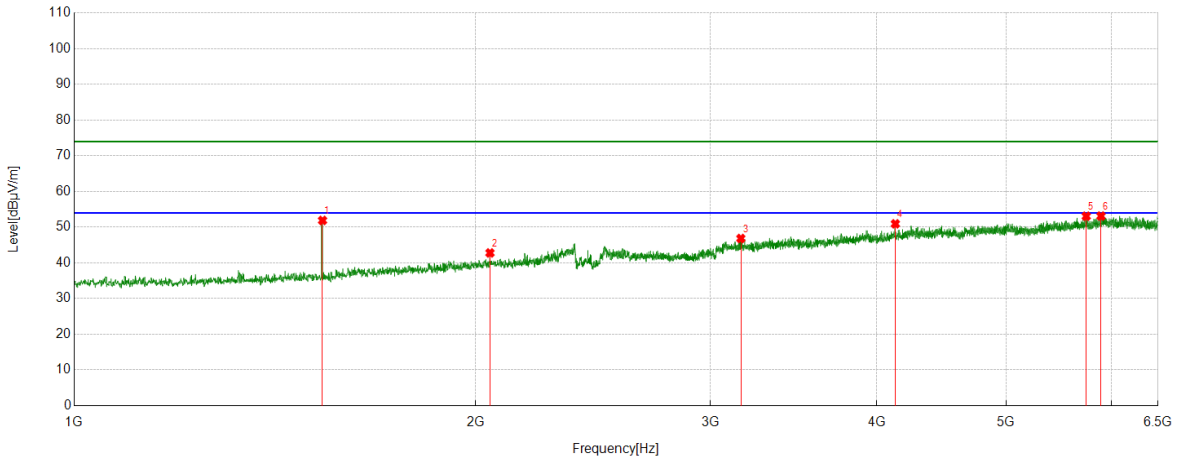
No.	Frequency	Reading Level	Correct Factor	Result	Limit	Margin	Remark
	[MHz]	[dBuV]	[dB/m]	[dBuV/m]	[dBuV/m]	[dB]	
1	1535.6295	51.83	-0.62	51.21	74.00	-22.79	Vertical
2	1922.0528	40.00	3.06	43.06	74.00	-30.94	Vertical
3	2352.4816	40.69	4.78	45.47	74.00	-28.53	Vertical
4	3115.0144	37.27	9.38	46.65	74.00	-27.35	Vertical
5	4433.1166	36.37	14.14	50.51	74.00	-23.49	Vertical
6	5947.1809	35.82	18.45	54.27	74.00	-19.73	Vertical

AV Result:

No.	Frequency	Reading Level	Correct Factor	Result	Limit	Margin	Remark
	[MHz]	[dBuV]	[dB/m]	[dBuV/m]	[dBuV/m]	[dB]	
1	5947.1809	24.54	18.45	42.99	54.00	-11.01	Vertical

- Note: 1. Measurement = Reading Level + Correct Factor,
Correct Factor = Antenna Factor + Loss (Cable + Filter) – Amplifier Gain.
2. If Peak Result complies with AV limit, AV Result is deemed to comply with AV limit.
3. Test setup: RBW: 1 MHz, VBW: 3 MHz, Sweep time: auto.
4. Peak: Peak detector.
5. For below 3GHz part, filter losses were only considered in the spurious frequency bands and the authorized band was not corrected for Band Reject Filter losses.
6. Only the worst case emission was recorded, if it complies with the limit, the other emissions deemed to comply with the limit.

Test Mode	Channel	Polarization	Verdict
11G	HCH	Horizontal	PASS

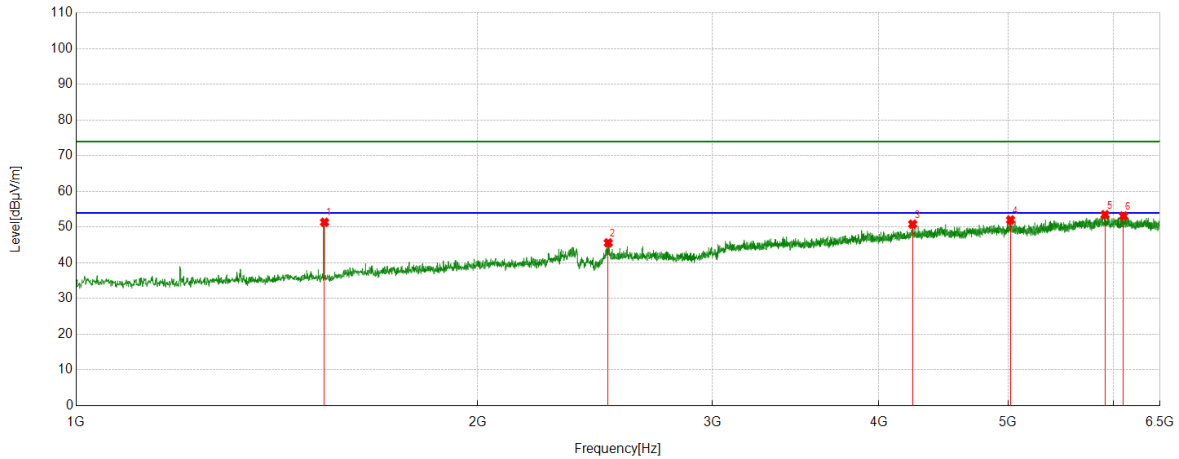


PK Result:

No.	Frequency	Reading Level	Correct Factor	Result	Limit	Margin	Remark
	[MHz]	[dBuV]	[dB/m]	[dBuV/m]	[dBuV/m]	[dB]	
1	1535.6295	52.51	-0.62	51.89	74.00	-22.11	Horizontal
2	2050.6313	38.55	4.24	42.79	74.00	-31.21	Horizontal
3	3162.4578	37.44	9.40	46.84	74.00	-27.16	Horizontal
4	4129.8912	37.65	13.29	50.94	74.00	-23.06	Horizontal
5	5742.2803	35.27	17.81	53.08	74.00	-20.92	Horizontal
6	5890.1113	35.14	17.98	53.12	74.00	-20.88	Horizontal

- Note: 1. Measurement = Reading Level + Correct Factor,
Correct Factor = Antenna Factor + Loss (Cable + Filter) – Amplifier Gain.
2. If Peak Result complies with AV limit, AV Result is deemed to comply with AV limit.
3. Test setup: RBW: 1 MHz, VBW: 3 MHz, Sweep time: auto.
4. Peak: Peak detector.
5. For below 3GHz part, filter losses were only considered in the spurious frequency bands and the authorized band was not corrected for Band Reject Filter losses.
6. Only the worst case emission was recorded, if it complies with the limit, the other emissions deemed to comply with the limit.

Test Mode	Channel	Polarization	Verdict
11G	HCH	Vertical	PASS

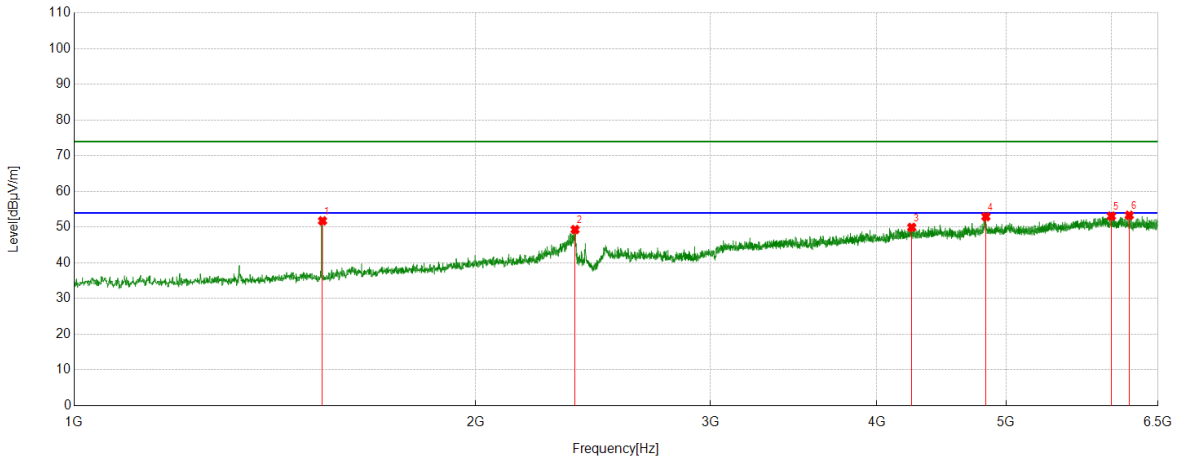


PK Result:

No.	Frequency	Reading Level	Correct Factor	Result	Limit	Margin	Remark
	[MHz]	[dBuV]	[dB/m]	[dBuV/m]	[dBuV/m]	[dB]	
1	1535.6295	52.00	-0.62	51.38	74.00	-22.62	Vertical
2	2506.5008	39.70	5.90	45.60	74.00	-28.40	Vertical
3	4239.905	36.90	13.95	50.85	74.00	-23.15	Vertical
4	5021.0026	36.50	15.53	52.03	74.00	-21.97	Vertical
5	5910.7388	35.26	18.22	53.48	74.00	-20.52	Vertical
6	6102.5753	34.87	18.27	53.14	74.00	-20.86	Vertical

- Note: 1. Measurement = Reading Level + Correct Factor,
Correct Factor = Antenna Factor + Loss (Cable + Filter) – Amplifier Gain.
2. If Peak Result complies with AV limit, AV Result is deemed to comply with AV limit.
3. Test setup: RBW: 1 MHz, VBW: 3 MHz, Sweep time: auto.
4. Peak: Peak detector.
5. For below 3GHz part, filter losses were only considered in the spurious frequency bands and the authorized band was not corrected for Band Reject Filter losses.
6. Only the worst case emission was recorded, if it complies with the limit, the other emissions deemed to comply with the limit.

Test Mode	Channel	Polarization	Verdict
11N HT20	LCH	Horizontal	PASS

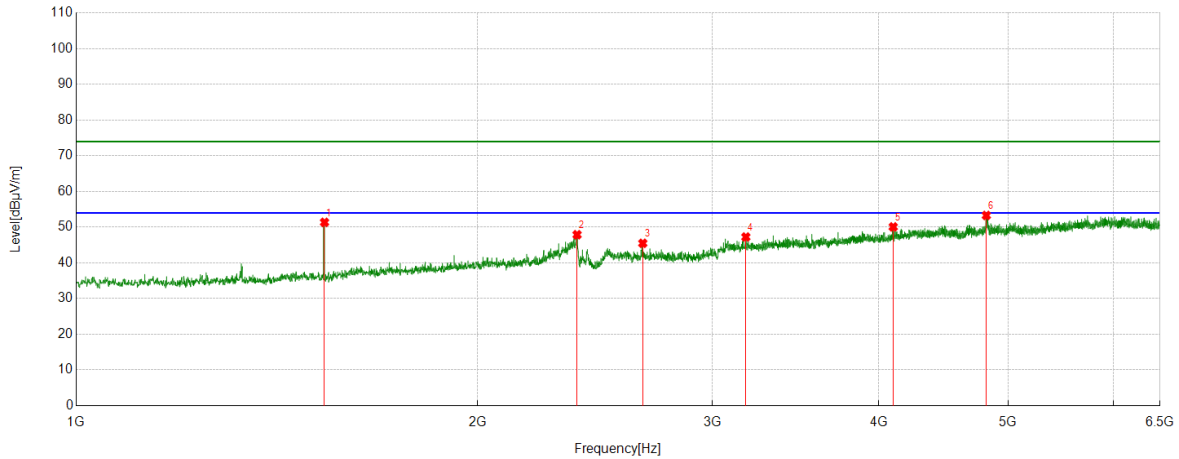


PK Result:

No.	Frequency	Reading Level	Correct Factor	Result	Limit	Margin	Remark
	[MHz]	[dBuV]	[dB/m]	[dBuV/m]	[dBuV/m]	[dB]	
1	1535.6295	52.40	-0.62	51.78	74.00	-22.22	Horizontal
2	2375.1719	44.49	4.83	49.32	74.00	-24.68	Horizontal
3	4248.1560	35.99	13.96	49.95	74.00	-24.05	Horizontal
4	4828.4786	37.54	15.42	52.96	74.00	-21.04	Horizontal
5	5997.3747	34.85	18.26	53.11	74.00	-20.89	Horizontal
6	6185.0856	34.50	18.83	53.33	74.00	-20.67	Horizontal

- Note: 1. Measurement = Reading Level + Correct Factor,
Correct Factor = Antenna Factor + Loss (Cable + Filter) – Amplifier Gain.
2. If Peak Result complies with AV limit, AV Result is deemed to comply with AV limit.
3. Test setup: RBW: 1 MHz, VBW: 3 MHz, Sweep time: auto.
4. Peak: Peak detector.
5. For below 3GHz part, filter losses were only considered in the spurious frequency bands and the authorized band was not corrected for Band Reject Filter losses.
6. Only the worst case emission was recorded, if it complies with the limit, the other emissions deemed to comply with the limit.

Test Mode	Channel	Polarization	Verdict
11N HT20	LCH	Vertical	PASS

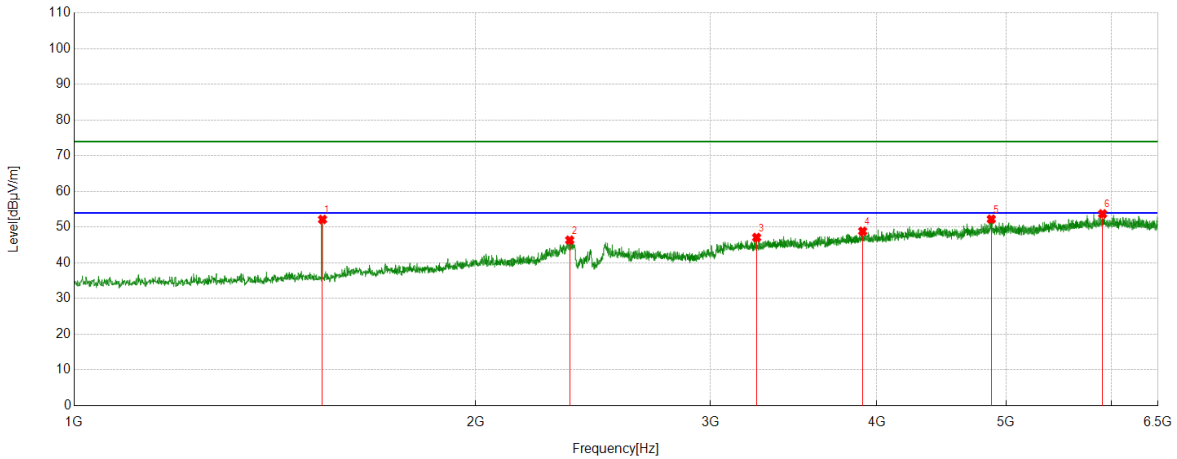


PK Result:

No.	Frequency	Reading Level	Correct Factor	Result	Limit	Margin	Remark
	[MHz]	[dBuV]	[dB/m]	[dBuV/m]	[dBuV/m]	[dB]	
1	1535.6295	51.98	-0.62	51.36	74.00	-22.64	Vertical
2	2375.1719	43.06	4.83	47.89	74.00	-26.11	Vertical
3	2660.5201	39.45	6.04	45.49	74.00	-28.51	Vertical
4	3178.9599	37.85	9.40	47.25	74.00	-26.75	Vertical
5	4100.325	36.25	13.83	50.08	74.00	-23.92	Vertical
6	4815.4144	37.67	15.62	53.29	74.00	-20.71	Vertical

- Note: 1. Measurement = Reading Level + Correct Factor,
Correct Factor = Antenna Factor + Loss (Cable + Filter) – Amplifier Gain.
2. If Peak Result complies with AV limit, AV Result is deemed to comply with AV limit.
3. Test setup: RBW: 1 MHz, VBW: 3 MHz, Sweep time: auto.
4. Peak: Peak detector.
5. For below 3GHz part, filter losses were only considered in the spurious frequency bands and the authorized band was not corrected for Band Reject Filter losses.
6. Only the worst case emission was recorded, if it complies with the limit, the other emissions deemed to comply with the limit.

Test Mode	Channel	Polarization	Verdict
11N HT20	MCH	Horizontal	PASS

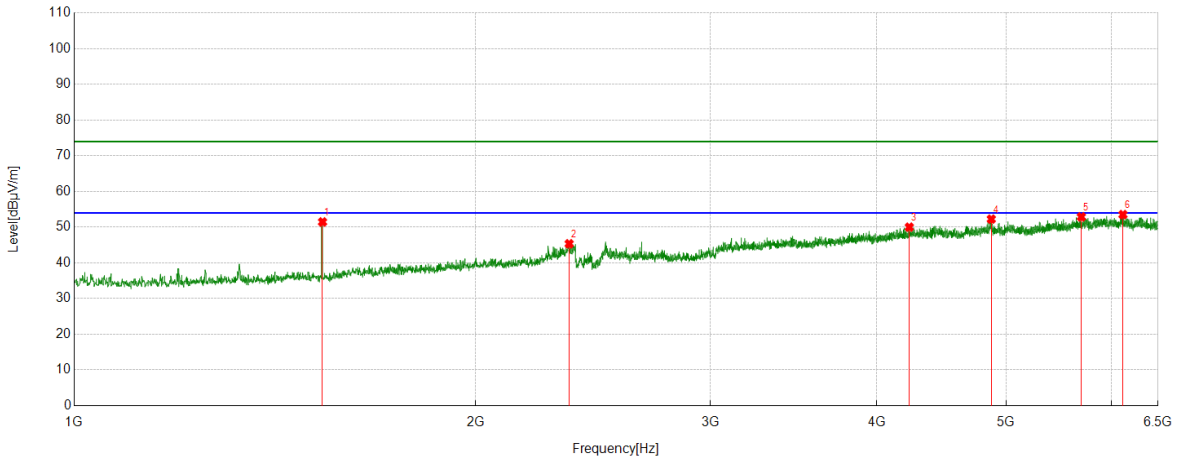


PK Result:

No.	Frequency	Reading Level	Correct Factor	Result	Limit	Margin	Remark
	[MHz]	[dBuV]	[dB/m]	[dBuV/m]	[dBuV/m]	[dB]	
1	1535.6295	52.78	-0.62	52.16	74.00	-21.84	Horizontal
2	2353.1691	41.60	4.77	46.37	74.00	-27.63	Horizontal
3	3249.7812	37.70	9.41	47.11	74.00	-26.89	Horizontal
4	3902.9879	36.35	12.52	48.87	74.00	-25.13	Horizontal
5	4873.8592	37.16	15.08	52.24	74.00	-21.76	Horizontal
6	5906.6133	35.64	18.09	53.73	74.00	-20.27	Horizontal

- Note: 1. Measurement = Reading Level + Correct Factor,
Correct Factor = Antenna Factor + Loss (Cable + Filter) – Amplifier Gain.
2. If Peak Result complies with AV limit, AV Result is deemed to comply with AV limit.
3. Test setup: RBW: 1 MHz, VBW: 3 MHz, Sweep time: auto.
4. Peak: Peak detector.
5. For below 3GHz part, filter losses were only considered in the spurious frequency bands and the authorized band was not corrected for Band Reject Filter losses.
6. Only the worst case emission was recorded, if it complies with the limit, the other emissions deemed to comply with the limit.

Test Mode	Channel	Polarization	Verdict
11N HT20	MCH	Vertical	PASS

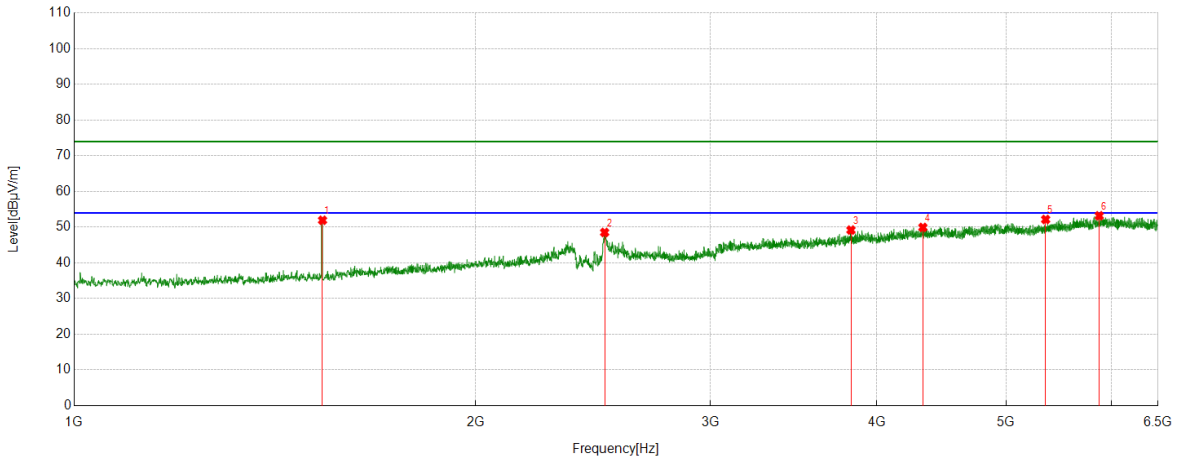


PK Result:

No.	Frequency	Reading Level	Correct Factor	Result	Limit	Margin	Remark
	[MHz]	[dBuV]	[dB/m]	[dBuV/m]	[dBuV/m]	[dB]	
1	1535.6295	52.08	-0.62	51.46	74.00	-22.54	Vertical
2	2351.1064	40.58	4.77	45.35	74.00	-28.65	Vertical
3	4230.2788	36.13	13.88	50.01	74.00	-23.99	Vertical
4	4873.8592	37.18	15.08	52.26	74.00	-21.74	Vertical
5	5693.4617	35.47	17.41	52.88	74.00	-21.12	Vertical
6	6117.7022	35.33	18.19	53.52	74.00	-20.48	Vertical

- Note: 1. Measurement = Reading Level + Correct Factor,
Correct Factor = Antenna Factor + Loss (Cable + Filter) – Amplifier Gain.
2. If Peak Result complies with AV limit, AV Result is deemed to comply with AV limit.
3. Test setup: RBW: 1 MHz, VBW: 3 MHz, Sweep time: auto.
4. Peak: Peak detector.
5. For below 3GHz part, filter losses were only considered in the spurious frequency bands and the authorized band was not corrected for Band Reject Filter losses.
6. Only the worst case emission was recorded, if it complies with the limit, the other emissions deemed to comply with the limit.

Test Mode	Channel	Polarization	Verdict
11N HT20	HCH	Horizontal	PASS

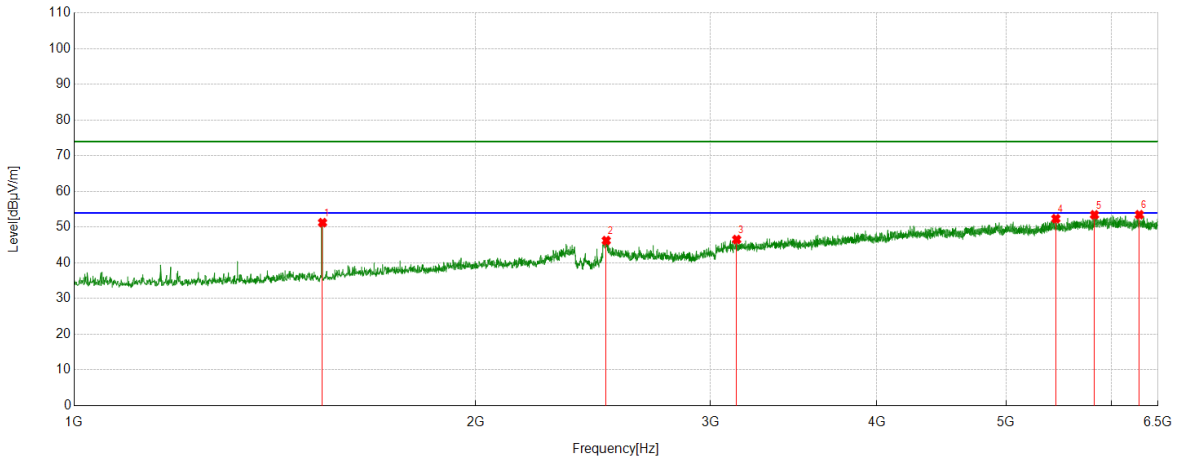


PK Result:

No.	Frequency	Reading Level	Correct Factor	Result	Limit	Margin	Remark
	[MHz]	[dBuV]	[dB/m]	[dBuV/m]	[dBuV/m]	[dB]	
1	1535.6295	52.56	-0.62	51.94	74.00	-22.06	Horizontal
2	2499.625	42.64	5.88	48.52	74.00	-25.48	Horizontal
3	3824.6031	37.03	12.16	49.19	74.00	-24.81	Horizontal
4	4330.6663	36.25	13.69	49.94	74.00	-24.06	Horizontal
5	5353.1066	36.03	16.13	52.16	74.00	-21.84	Horizontal
6	5872.234	35.33	17.86	53.19	74.00	-20.81	Horizontal

- Note: 1. Measurement = Reading Level + Correct Factor,
Correct Factor = Antenna Factor + Loss (Cable + Filter) – Amplifier Gain.
2. If Peak Result complies with AV limit, AV Result is deemed to comply with AV limit.
3. Test setup: RBW: 1 MHz, VBW: 3 MHz, Sweep time: auto.
4. Peak: Peak detector.
5. For below 3GHz part, filter losses were only considered in the spurious frequency bands and the authorized band was not corrected for Band Reject Filter losses.
6. Only the worst case emission was recorded, if it complies with the limit, the other emissions deemed to comply with the limit.

Test Mode	Channel	Polarization	Verdict
11N HT20	HCH	Vertical	PASS

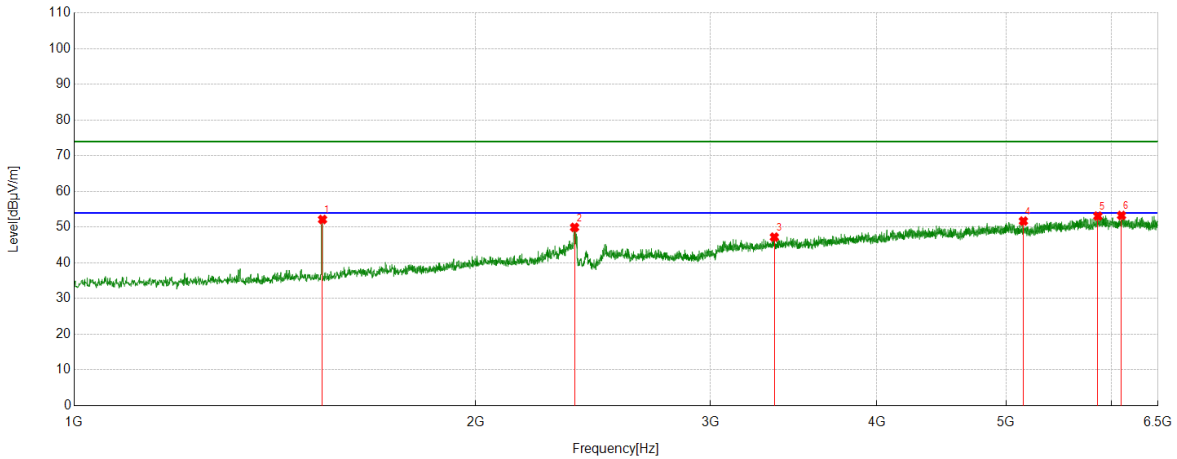


PK Result:

No.	Frequency	Reading Level	Correct Factor	Result	Limit	Margin	Remark
	[MHz]	[dBuV]	[dB/m]	[dBuV/m]	[dBuV/m]	[dB]	
1	1535.6295	51.89	-0.62	51.27	74.00	-22.73	Vertical
2	2506.5008	40.35	5.90	46.25	74.00	-27.75	Vertical
3	3139.7675	36.90	9.64	46.54	74.00	-27.46	Vertical
4	5448.6811	34.78	17.59	52.37	74.00	-21.63	Vertical
5	5824.1030	34.79	18.67	53.46	74.00	-20.54	Vertical
6	6293.7242	34.82	18.68	53.50	74.00	-20.50	Vertical

- Note: 1. Measurement = Reading Level + Correct Factor,
Correct Factor = Antenna Factor + Loss (Cable + Filter) – Amplifier Gain.
2. If Peak Result complies with AV limit, AV Result is deemed to comply with AV limit.
3. Test setup: RBW: 1 MHz, VBW: 3 MHz, Sweep time: auto.
4. Peak: Peak detector.
5. For below 3GHz part, filter losses were only considered in the spurious frequency bands and the authorized band was not corrected for Band Reject Filter losses.
6. Only the worst case emission was recorded, if it complies with the limit, the other emissions deemed to comply with the limit.

Test Mode	Channel	Polarization	Verdict
11N HT40	LCH	Horizontal	PASS

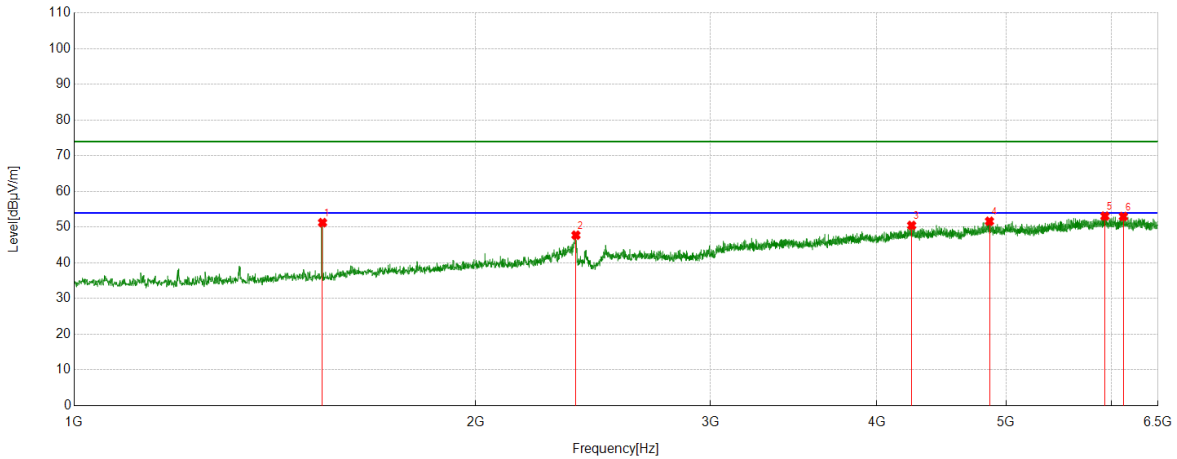


PK Result:

No.	Frequency	Reading Level	Correct Factor	Result	Limit	Margin	Remark
	[MHz]	[dBuV]	[dB/m]	[dBuV/m]	[dBuV/m]	[dB]	
1	1535.6295	52.77	-0.62	52.15	74.00	-21.85	Horizontal
2	2373.1091	45.13	4.82	49.95	74.00	-24.05	Horizontal
3	3350.8564	36.83	10.39	47.22	74.00	-26.78	Horizontal
4	5151.6440	36.55	15.16	51.71	74.00	-22.29	Horizontal
5	5858.4823	35.28	17.83	53.11	74.00	-20.89	Horizontal
6	6102.5753	35.01	18.27	53.28	74.00	-20.72	Horizontal

- Note: 1. Measurement = Reading Level + Correct Factor,
Correct Factor = Antenna Factor + Loss (Cable + Filter) – Amplifier Gain.
2. If Peak Result complies with AV limit, AV Result is deemed to comply with AV limit.
3. Test setup: RBW: 1 MHz, VBW: 3 MHz, Sweep time: auto.
4. Peak: Peak detector.
5. For below 3GHz part, filter losses were only considered in the spurious frequency bands and the authorized band was not corrected for Band Reject Filter losses.
6. Only the worst case emission was recorded, if it complies with the limit, the other emissions deemed to comply with the limit.

Test Mode	Channel	Polarization	Verdict
11N HT40	LCH	Vertical	PASS

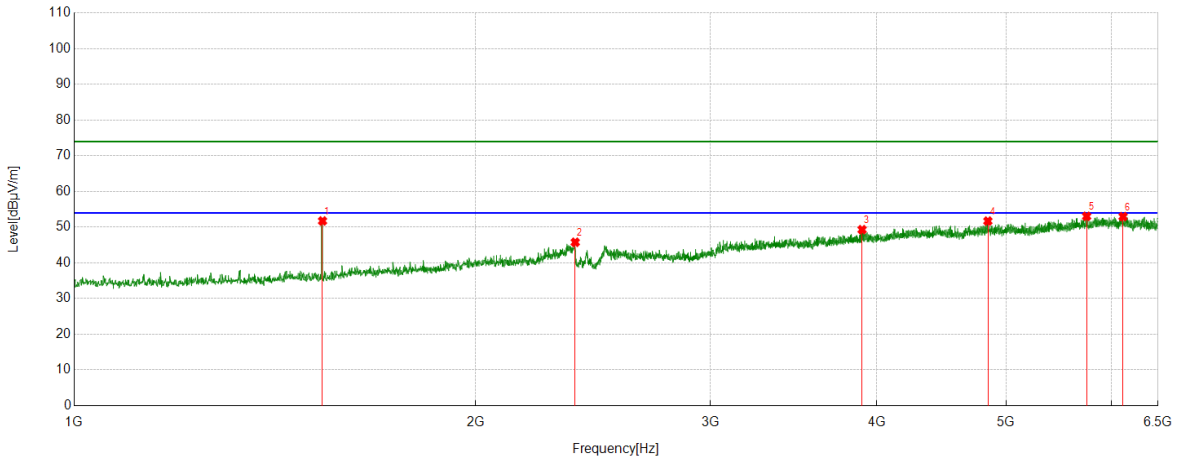


PK Result:

No.	Frequency	Reading Level	Correct Factor	Result	Limit	Margin	Remark
	[MHz]	[dBuV]	[dB/m]	[dBuV/m]	[dBuV/m]	[dB]	
1	1535.6295	51.89	-0.62	51.27	74.00	-22.73	Vertical
2	2378.6098	42.93	4.83	47.76	74.00	-26.24	Vertical
3	4247.4684	36.54	13.95	50.49	74.00	-23.51	Vertical
4	4858.7323	36.44	15.22	51.66	74.00	-22.34	Vertical
5	5930.6788	34.21	18.89	53.10	74.00	-20.90	Vertical
6	6122.5153	34.73	18.26	52.99	74.00	-21.01	Vertical

- Note: 1. Measurement = Reading Level + Correct Factor,
Correct Factor = Antenna Factor + Loss (Cable + Filter) – Amplifier Gain.
2. If Peak Result complies with AV limit, AV Result is deemed to comply with AV limit.
3. Test setup: RBW: 1 MHz, VBW: 3 MHz, Sweep time: auto.
4. Peak: Peak detector.
5. For below 3GHz part, filter losses were only considered in the spurious frequency bands and the authorized band was not corrected for Band Reject Filter losses.
6. Only the worst case emission was recorded, if it complies with the limit, the other emissions deemed to comply with the limit.

Test Mode	Channel	Polarization	Verdict
11N HT40	MCH	Horizontal	PASS

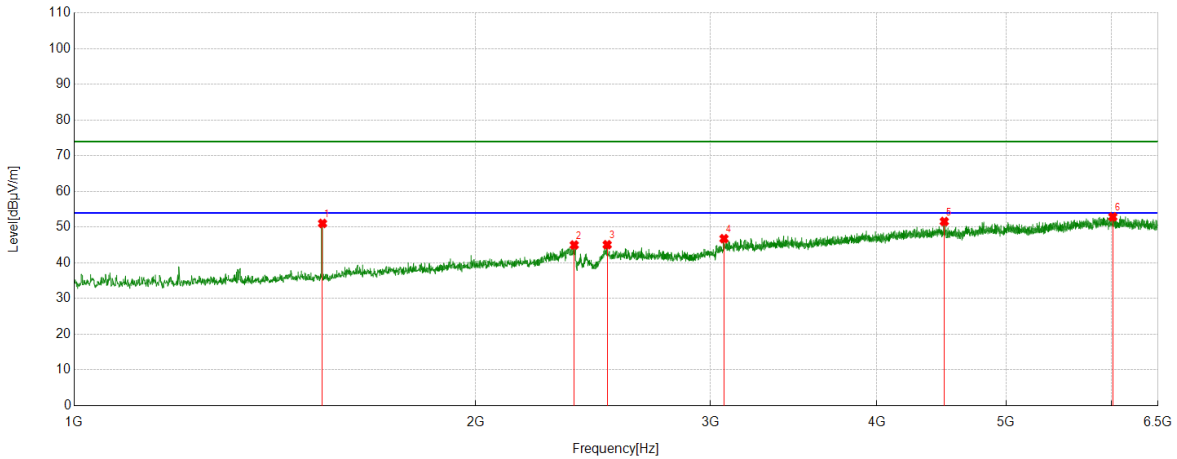


PK Result:

No.	Frequency	Reading Level	Correct Factor	Result	Limit	Margin	Remark
	[MHz]	[dBuV]	[dB/m]	[dBuV/m]	[dBuV/m]	[dB]	
1	1535.6295	52.37	-0.62	51.75	74.00	-22.25	Horizontal
2	2375.8595	40.94	4.83	45.77	74.00	-28.23	Horizontal
3	3898.8624	36.80	12.51	49.31	74.00	-24.69	Horizontal
4	4844.9806	36.40	15.31	51.71	74.00	-22.29	Horizontal
5	5746.4058	35.32	17.73	53.05	74.00	-20.95	Horizontal
6	6119.0774	34.73	18.23	52.96	74.00	-21.04	Horizontal

- Note: 1. Measurement = Reading Level + Correct Factor,
Correct Factor = Antenna Factor + Loss (Cable + Filter) – Amplifier Gain.
2. If Peak Result complies with AV limit, AV Result is deemed to comply with AV limit.
3. Test setup: RBW: 1 MHz, VBW: 3 MHz, Sweep time: auto.
4. Peak: Peak detector.
5. For below 3GHz part, filter losses were only considered in the spurious frequency bands and the authorized band was not corrected for Band Reject Filter losses.
6. Only the worst case emission was recorded, if it complies with the limit, the other emissions deemed to comply with the limit.

Test Mode	Channel	Polarization	Verdict
11N HT40	MCH	Vertical	PASS

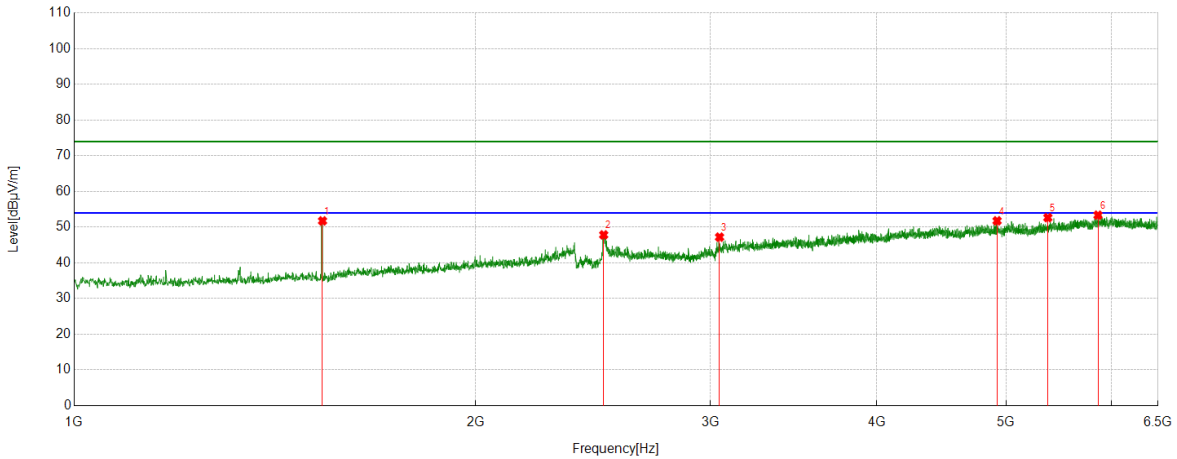


PK Result:

No.	Frequency	Reading Level	Correct Factor	Result	Limit	Margin	Remark
	[MHz]	[dBuV]	[dB/m]	[dBuV/m]	[dBuV/m]	[dB]	
1	1535.6295	51.68	-0.62	51.06	74.00	-22.94	Vertical
2	2371.7340	40.19	4.82	45.01	74.00	-28.99	Vertical
3	2510.6263	39.18	5.90	45.08	74.00	-28.92	Vertical
4	3071.6965	37.51	9.27	46.78	74.00	-27.22	Vertical
5	4493.6242	37.40	14.19	51.59	74.00	-22.41	Vertical
6	6011.8140	34.78	18.11	52.89	74.00	-21.11	Vertical

- Note: 1. Measurement = Reading Level + Correct Factor,
Correct Factor = Antenna Factor + Loss (Cable + Filter) – Amplifier Gain.
2. If Peak Result complies with AV limit, AV Result is deemed to comply with AV limit.
3. Test setup: RBW: 1 MHz, VBW: 3 MHz, Sweep time: auto.
4. Peak: Peak detector.
5. For below 3GHz part, filter losses were only considered in the spurious frequency bands and the authorized band was not corrected for Band Reject Filter losses.
6. Only the worst case emission was recorded, if it complies with the limit, the other emissions deemed to comply with the limit.

Test Mode	Channel	Polarization	Verdict
11N HT40	HCH	Horizontal	PASS

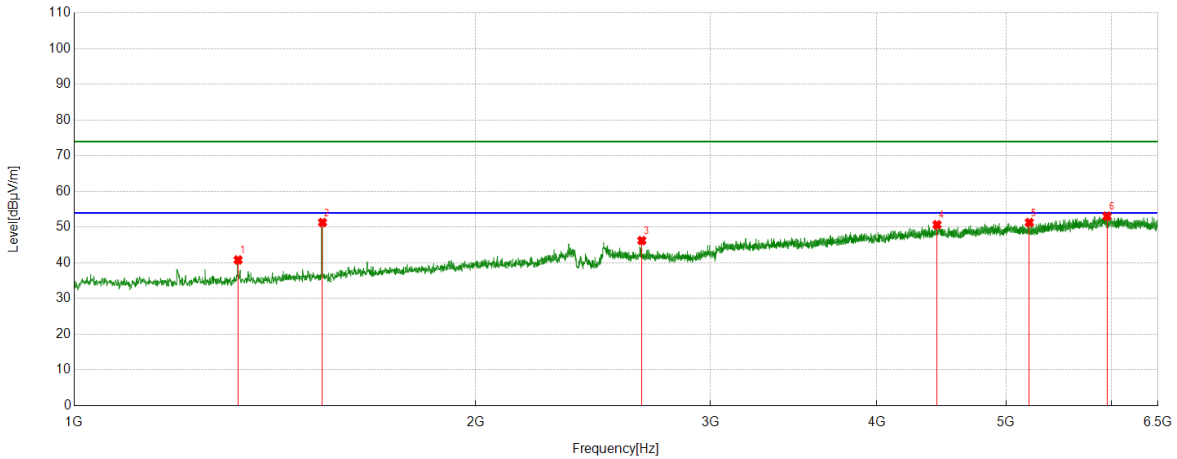


PK Result:

No.	Frequency	Reading Level	Correct Factor	Result	Limit	Margin	Remark
	[MHz]	[dBuV]	[dB/m]	[dBuV/m]	[dBuV/m]	[dB]	
1	1535.6295	52.38	-0.62	51.76	74.00	-22.24	Horizontal
2	2495.4994	42.00	5.85	47.85	74.00	-26.15	Horizontal
3	3048.3185	38.64	8.57	47.21	74.00	-26.79	Horizontal
4	4922.6778	36.44	15.34	51.78	74.00	-22.22	Horizontal
5	5373.7342	36.13	16.54	52.67	74.00	-21.33	Horizontal
6	5859.8575	35.57	17.79	53.36	74.00	-20.64	Horizontal

- Note: 1. Measurement = Reading Level + Correct Factor,
Correct Factor = Antenna Factor + Loss (Cable + Filter) – Amplifier Gain.
2. If Peak Result complies with AV limit, AV Result is deemed to comply with AV limit.
3. Test setup: RBW: 1 MHz, VBW: 3 MHz, Sweep time: auto.
4. Peak: Peak detector.
5. For below 3GHz part, filter losses were only considered in the spurious frequency bands and the authorized band was not corrected for Band Reject Filter losses.
6. Only the worst case emission was recorded, if it complies with the limit, the other emissions deemed to comply with the limit.

Test Mode	Channel	Polarization	Verdict
11N HT40	HCH	Vertical	PASS

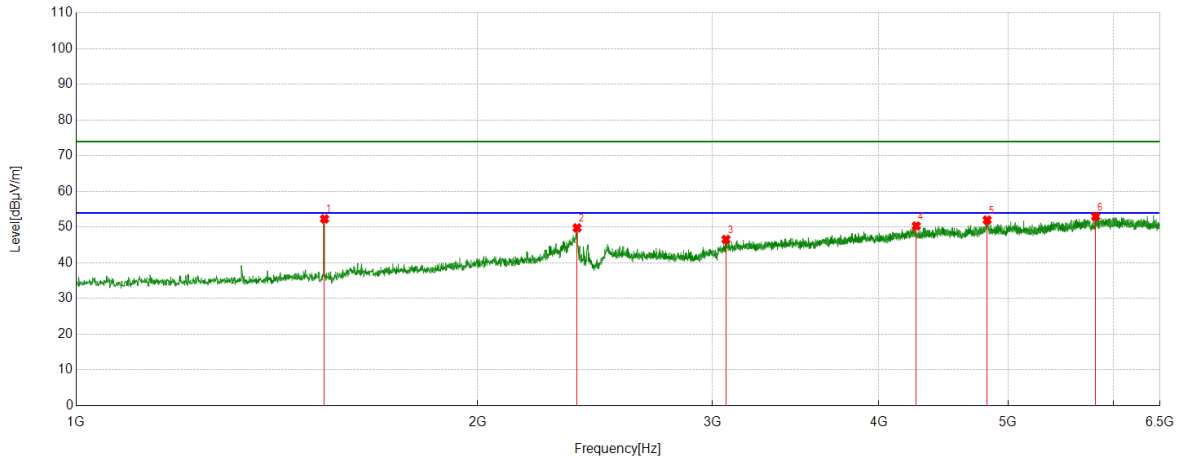


PK Result:

No.	Frequency	Reading Level	Correct Factor	Result	Limit	Margin	Remark
	[MHz]	[dBuV]	[dB/m]	[dBuV/m]	[dBuV/m]	[dB]	
1	1327.2909	41.95	-1.13	40.82	74.00	-33.18	Vertical
2	1535.6295	51.94	-0.62	51.32	74.00	-22.68	Vertical
3	2665.3332	40.11	6.13	46.24	74.00	-27.76	Vertical
4	4437.9297	36.12	14.56	50.68	74.00	-23.32	Vertical
5	5204.5881	35.86	15.45	51.31	74.00	-22.69	Vertical
6	5951.9940	34.60	18.48	53.08	74.00	-20.92	Vertical

- Note: 1. Measurement = Reading Level + Correct Factor,
Correct Factor = Antenna Factor + Loss (Cable + Filter) – Amplifier Gain.
2. If Peak Result complies with AV limit, AV Result is deemed to comply with AV limit.
3. Test setup: RBW: 1 MHz, VBW: 3 MHz, Sweep time: auto.
4. Peak: Peak detector.
5. For below 3GHz part, filter losses were only considered in the spurious frequency bands and the authorized band was not corrected for Band Reject Filter losses.
6. Only the worst case emission was recorded, if it complies with the limit, the other emissions deemed to comply with the limit.

Test Mode	Channel	Polarization	Verdict
11AX HE20	LCH	Horizontal	PASS

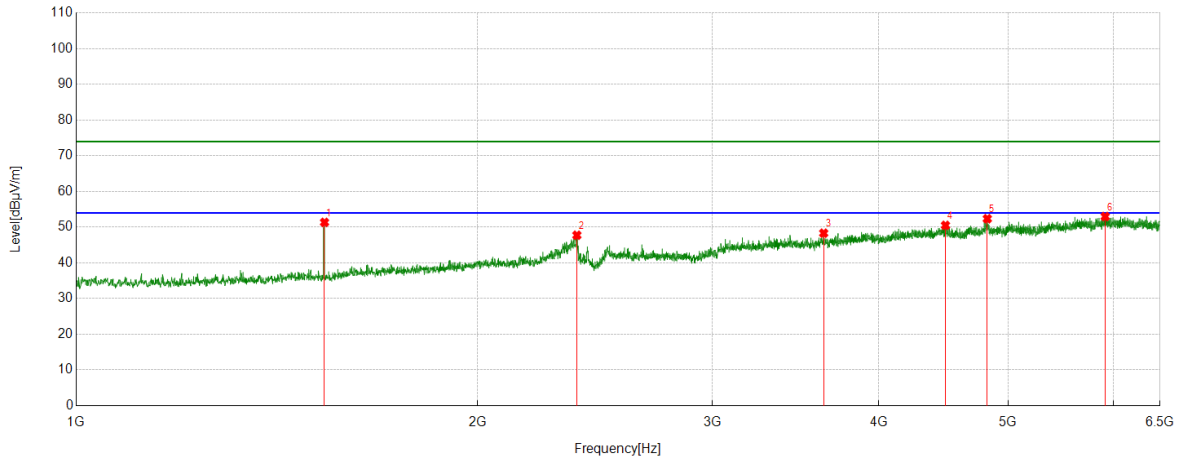


PK Result:

No.	Frequency	Reading Level	Correct Factor	Result	Limit	Margin	Remark
	[MHz]	[dBuV]	[dB/m]	[dBuV/m]	[dBuV/m]	[dB]	
1	1535.6295	52.94	-0.62	52.32	74.00	-21.68	Horizontal
2	2375.1719	44.96	4.83	49.79	74.00	-24.21	Horizontal
3	3071.6965	37.30	9.27	46.57	74.00	-27.43	Horizontal
4	4266.7208	36.36	13.98	50.34	74.00	-23.66	Horizontal
5	4822.2903	36.21	15.79	52.00	74.00	-22.00	Horizontal
6	5816.5396	34.55	18.46	53.01	74.00	-20.99	Horizontal

- Note: 1. Measurement = Reading Level + Correct Factor,
Correct Factor = Antenna Factor + Loss (Cable + Filter) – Amplifier Gain.
2. If Peak Result complies with AV limit, AV Result is deemed to comply with AV limit.
3. Test setup: RBW: 1 MHz, VBW: 3 MHz, Sweep time: auto.
4. Peak: Peak detector.
5. For below 3GHz part, filter losses were only considered in the spurious frequency bands and the authorized band was not corrected for Band Reject Filter losses.
6. Only the worst case emission was recorded, if it complies with the limit, the other emissions deemed to comply with the limit.

Test Mode	Channel	Polarization	Verdict
11AX HE20	LCH	Vertical	PASS

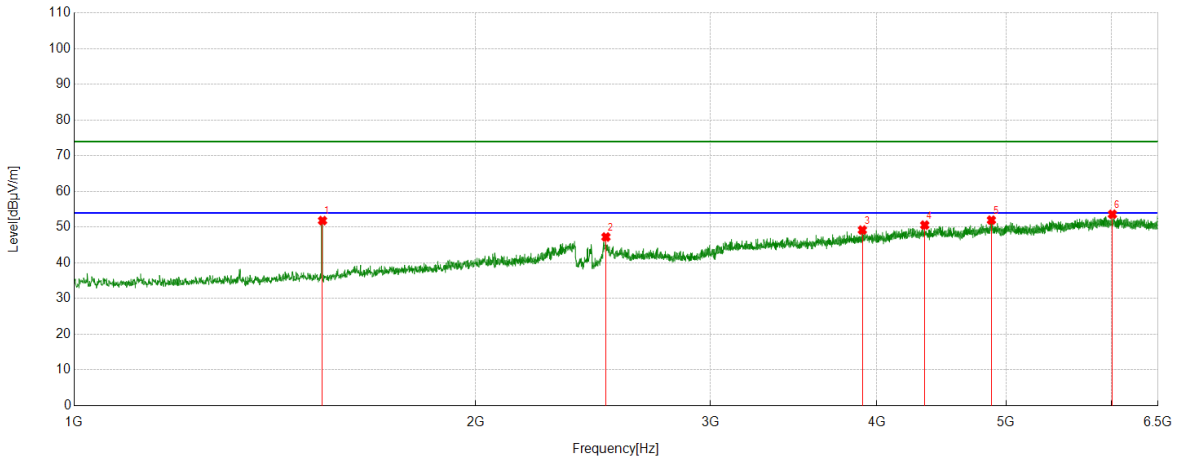


PK Result:

No.	Frequency	Reading Level	Correct Factor	Result	Limit	Margin	Remark
	[MHz]	[dBuV]	[dB/m]	[dBuV/m]	[dBuV/m]	[dB]	
1	1535.6295	51.97	-0.62	51.35	74.00	-22.65	Vertical
2	2374.4843	42.93	4.82	47.75	74.00	-26.25	Vertical
3	3636.2045	37.19	11.13	48.32	74.00	-25.68	Vertical
4	4487.4359	36.25	14.26	50.51	74.00	-23.49	Vertical
5	4823.6655	36.65	15.72	52.37	74.00	-21.63	Vertical
6	5912.8016	34.66	18.33	52.99	74.00	-21.01	Vertical

- Note: 1. Measurement = Reading Level + Correct Factor,
Correct Factor = Antenna Factor + Loss (Cable + Filter) – Amplifier Gain.
2. If Peak Result complies with AV limit, AV Result is deemed to comply with AV limit.
3. Test setup: RBW: 1 MHz, VBW: 3 MHz, Sweep time: auto.
4. Peak: Peak detector.
5. For below 3GHz part, filter losses were only considered in the spurious frequency bands and the authorized band was not corrected for Band Reject Filter losses.
6. Only the worst case emission was recorded, if it complies with the limit, the other emissions deemed to comply with the limit.

Test Mode	Channel	Polarization	Verdict
11AX HE20	MCH	Horizontal	PASS

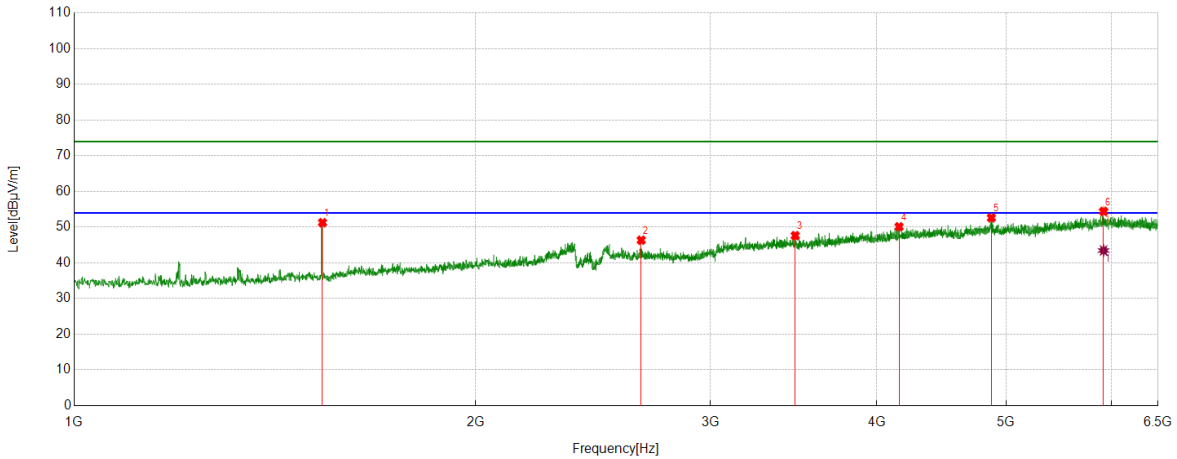


PK Result:

No.	Frequency	Reading Level	Correct Factor	Result	Limit	Margin	Remark
	[MHz]	[dBuV]	[dB/m]	[dBuV/m]	[dBuV/m]	[dB]	
1	1535.6295	52.46	-0.62	51.84	74.00	-22.16	Horizontal
2	2505.1256	41.35	5.90	47.25	74.00	-26.75	Horizontal
3	3900.9251	36.69	12.51	49.20	74.00	-24.80	Horizontal
4	4344.4181	37.00	13.58	50.58	74.00	-23.42	Horizontal
5	4874.5468	36.88	15.10	51.98	74.00	-22.02	Horizontal
6	6007.6885	35.45	18.17	53.62	74.00	-20.38	Horizontal

- Note: 1. Measurement = Reading Level + Correct Factor,
Correct Factor = Antenna Factor + Loss (Cable + Filter) – Amplifier Gain.
2. If Peak Result complies with AV limit, AV Result is deemed to comply with AV limit.
3. Test setup: RBW: 1 MHz, VBW: 3 MHz, Sweep time: auto.
4. Peak: Peak detector.
5. For below 3GHz part, filter losses were only considered in the spurious frequency bands and the authorized band was not corrected for Band Reject Filter losses.
6. Only the worst case emission was recorded, if it complies with the limit, the other emissions deemed to comply with the limit.

Test Mode	Channel	Polarization	Verdict
11AX HE20	MCH	Vertical	PASS



PK Result:

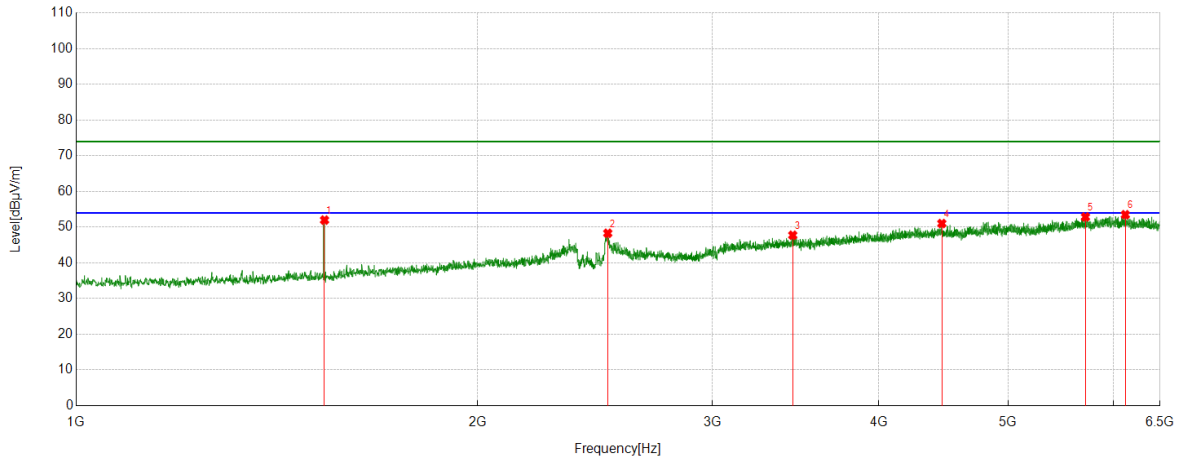
No.	Frequency	Reading Level	Correct Factor	Result	Limit	Margin	Remark
	[MHz]	[dBuV]	[dB/m]	[dBuV/m]	[dBuV/m]	[dB]	
1	1535.6295	51.90	-0.62	51.28	74.00	-22.72	Vertical
2	2662.5828	40.28	6.08	46.36	74.00	-27.64	Vertical
3	3473.9342	37.02	10.62	47.64	74.00	-26.36	Vertical
4	4156.0195	36.75	13.37	50.12	74.00	-23.88	Vertical
5	4874.5468	37.52	15.10	52.62	74.00	-21.38	Vertical
6	5916.9271	35.89	18.53	54.42	74.00	-19.58	Vertical

AV Result:

No.	Frequency	Reading Level	Correct Factor	Result	Limit	Margin	Remark
	[MHz]	[dBuV]	[dB/m]	[dBuV/m]	[dBuV/m]	[dB]	
1	5916.9271	24.93	18.53	43.46	54.00	-10.54	Vertical

- Note: 1. Measurement = Reading Level + Correct Factor,
Correct Factor = Antenna Factor + Loss (Cable + Filter) – Amplifier Gain.
2. If Peak Result complies with AV limit, AV Result is deemed to comply with AV limit.
3. Test setup: RBW: 1 MHz, VBW: 3 MHz, Sweep time: auto.
4. Peak: Peak detector.
5. For below 3GHz part, filter losses were only considered in the spurious frequency bands and the authorized band was not corrected for Band Reject Filter losses.
6. Only the worst case emission was recorded, if it complies with the limit, the other emissions deemed to comply with the limit.

Test Mode	Channel	Polarization	Verdict
11AX HE20	HCH	Horizontal	PASS

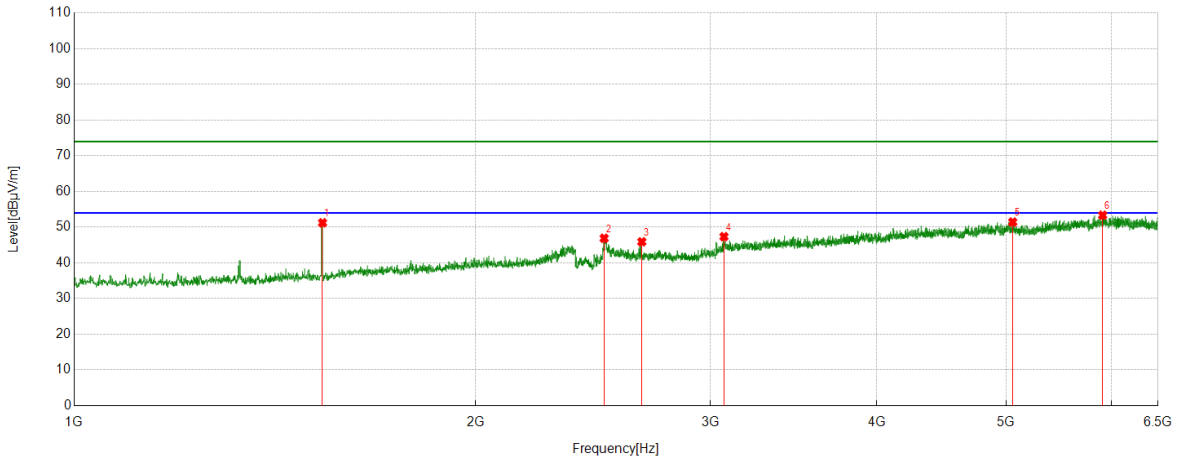


PK Result:

No.	Frequency	Reading Level	Correct Factor	Result	Limit	Margin	Remark
	[MHz]	[dBuV]	[dB/m]	[dBuV/m]	[dBuV/m]	[dB]	
1	1535.6295	52.61	-0.62	51.99	74.00	-22.01	Horizontal
2	2504.4381	42.41	5.89	48.30	74.00	-25.70	Horizontal
3	3447.1184	37.35	10.40	47.75	74.00	-26.25	Horizontal
4	4459.2449	36.14	14.89	51.03	74.00	-22.97	Horizontal
5	5714.7768	35.30	17.56	52.86	74.00	-21.14	Horizontal
6	6121.8277	35.23	18.26	53.49	74.00	-20.51	Horizontal

- Note: 1. Measurement = Reading Level + Correct Factor,
Correct Factor = Antenna Factor + Loss (Cable + Filter) – Amplifier Gain.
2. If Peak Result complies with AV limit, AV Result is deemed to comply with AV limit.
3. Test setup: RBW: 1 MHz, VBW: 3 MHz, Sweep time: auto.
4. Peak: Peak detector.
5. For below 3GHz part, filter losses were only considered in the spurious frequency bands and the authorized band was not corrected for Band Reject Filter losses.
6. Only the worst case emission was recorded, if it complies with the limit, the other emissions deemed to comply with the limit.

Test Mode	Channel	Polarization	Verdict
11AX HE20	HCH	Vertical	PASS

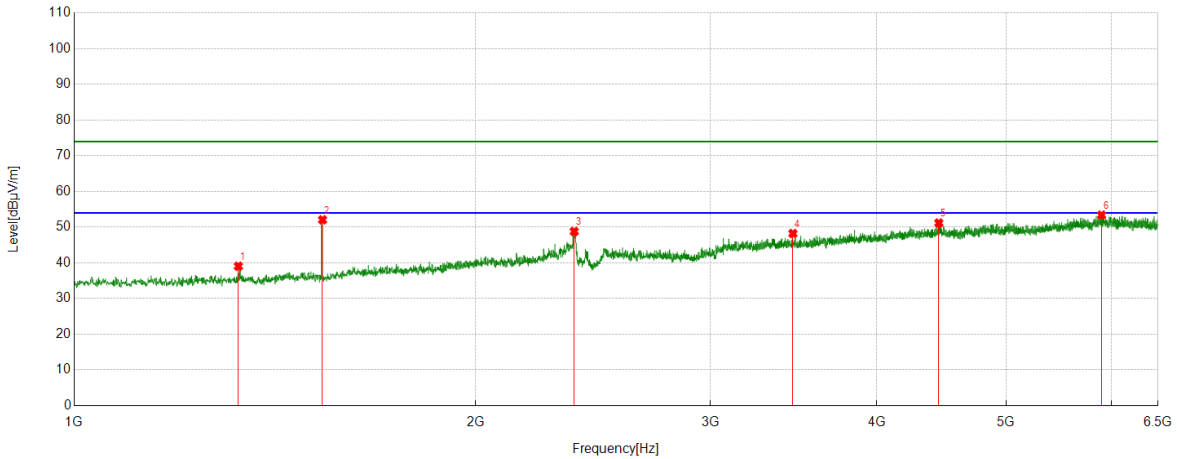


PK Result:

No.	Frequency	Reading Level	Correct Factor	Result	Limit	Margin	Remark
	[MHz]	[dBuV]	[dB/m]	[dBuV/m]	[dBuV/m]	[dB]	
1	1535.6295	51.85	-0.62	51.23	74.00	-22.77	Vertical
2	2497.5622	41.02	5.87	46.89	74.00	-27.11	Vertical
3	2665.3332	39.78	6.13	45.91	74.00	-28.09	Vertical
4	3071.6965	38.08	9.27	47.35	74.00	-26.65	Vertical
5	5057.4447	35.54	15.89	51.43	74.00	-22.57	Vertical
6	5907.3009	35.23	18.11	53.34	74.00	-20.66	Vertical

- Note: 1. Measurement = Reading Level + Correct Factor,
Correct Factor = Antenna Factor + Loss (Cable + Filter) – Amplifier Gain.
2. If Peak Result complies with AV limit, AV Result is deemed to comply with AV limit.
3. Test setup: RBW: 1 MHz, VBW: 3 MHz, Sweep time: auto.
4. Peak: Peak detector.
5. For below 3GHz part, filter losses were only considered in the spurious frequency bands and the authorized band was not corrected for Band Reject Filter losses.
6. Only the worst case emission was recorded, if it complies with the limit, the other emissions deemed to comply with the limit.

Test Mode	Channel	Polarization	Verdict
11AX HE40	LCH	Horizontal	PASS

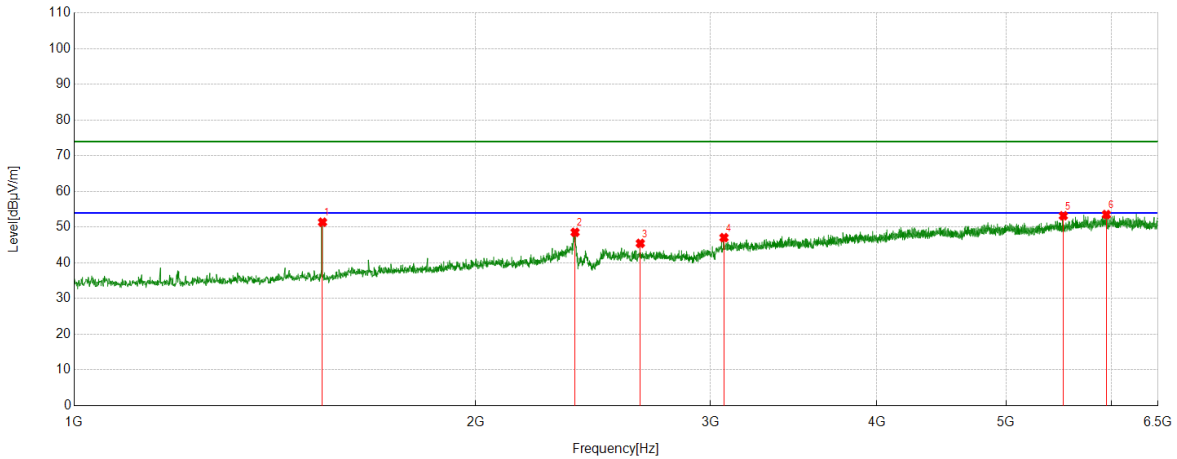


PK Result:

No.	Frequency	Reading Level	Correct Factor	Result	Limit	Margin	Remark
	[MHz]	[dBuV]	[dB/m]	[dBuV/m]	[dBuV/m]	[dB]	
1	1327.9785	40.17	-1.10	39.07	74.00	-34.93	Horizontal
2	1535.6295	52.69	-0.62	52.07	74.00	-21.93	Horizontal
3	2371.7340	43.98	4.82	48.80	74.00	-25.20	Horizontal
4	3460.1825	37.11	11.12	48.23	74.00	-25.77	Horizontal
5	4451.6815	36.81	14.36	51.17	74.00	-22.83	Horizontal
6	5895.6120	35.43	17.95	53.38	74.00	-20.62	Horizontal

- Note: 1. Measurement = Reading Level + Correct Factor,
Correct Factor = Antenna Factor + Loss (Cable + Filter) – Amplifier Gain.
2. If Peak Result complies with AV limit, AV Result is deemed to comply with AV limit.
3. Test setup: RBW: 1 MHz, VBW: 3 MHz, Sweep time: auto.
4. Peak: Peak detector.
5. For below 3GHz part, filter losses were only considered in the spurious frequency bands and the authorized band was not corrected for Band Reject Filter losses.
6. Only the worst case emission was recorded, if it complies with the limit, the other emissions deemed to comply with the limit.

Test Mode	Channel	Polarization	Verdict
11AX HE40	LCH	Vertical	PASS

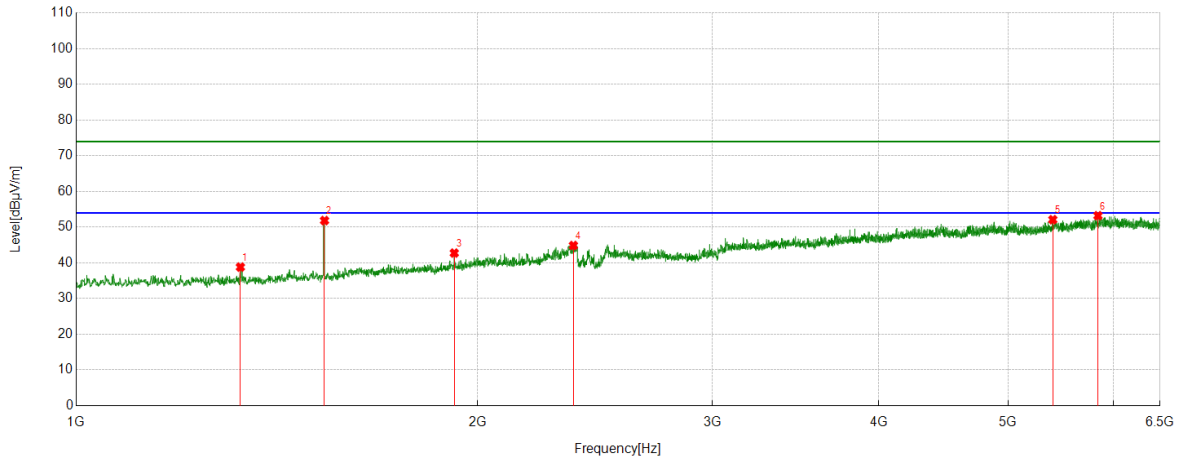


PK Result:

No.	Frequency	Reading Level	Correct Factor	Result	Limit	Margin	Remark
	[MHz]	[dBuV]	[dB/m]	[dBuV/m]	[dBuV/m]	[dB]	
1	1535.6295	52.01	-0.62	51.39	74.00	-22.61	Vertical
2	2375.1719	43.73	4.83	48.56	74.00	-25.44	Vertical
3	2658.4573	39.37	6.09	45.46	74.00	-28.54	Vertical
4	3071.6965	37.80	9.27	47.07	74.00	-26.93	Vertical
5	5519.5024	36.56	16.63	53.19	74.00	-20.81	Vertical
6	5945.1181	35.08	18.45	53.53	74.00	-20.47	Vertical

- Note: 1. Measurement = Reading Level + Correct Factor,
Correct Factor = Antenna Factor + Loss (Cable + Filter) – Amplifier Gain.
2. If Peak Result complies with AV limit, AV Result is deemed to comply with AV limit.
3. Test setup: RBW: 1 MHz, VBW: 3 MHz, Sweep time: auto.
4. Peak: Peak detector.
5. For below 3GHz part, filter losses were only considered in the spurious frequency bands and the authorized band was not corrected for Band Reject Filter losses.
6. Only the worst case emission was recorded, if it complies with the limit, the other emissions deemed to comply with the limit.

Test Mode	Channel	Polarization	Verdict
11AX HE40	MCH	Horizontal	PASS

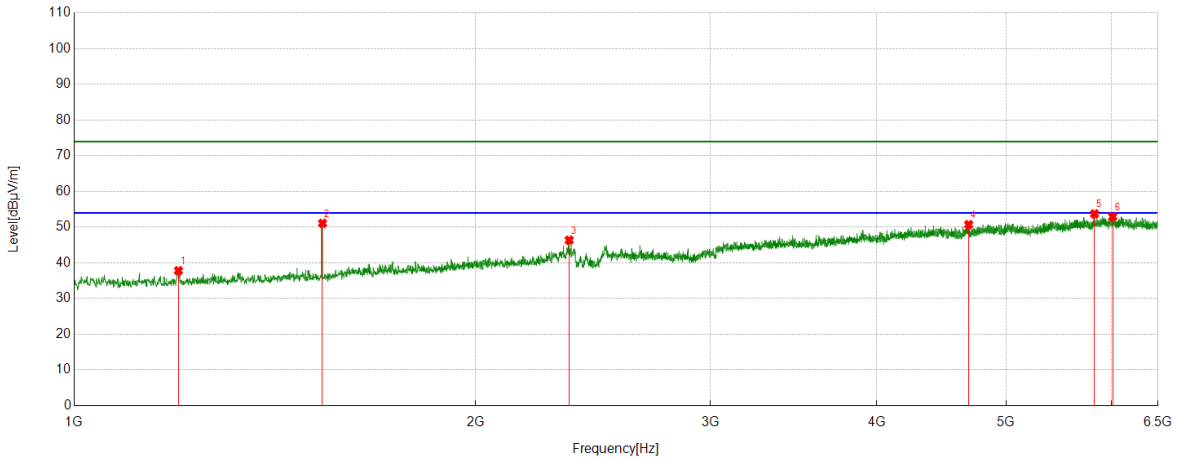


PK Result:

No.	Frequency	Reading Level	Correct Factor	Result	Limit	Margin	Remark
	[MHz]	[dBuV]	[dB/m]	[dBuV/m]	[dBuV/m]	[dB]	
1	1327.9785	39.92	-1.10	38.82	74.00	-35.18	Horizontal
2	1535.6295	52.48	-0.62	51.86	74.00	-22.14	Horizontal
3	1921.3652	39.67	3.08	42.75	74.00	-31.25	Horizontal
4	2360.0450	40.09	4.78	44.87	74.00	-29.13	Horizontal
5	5401.2377	35.20	16.91	52.11	74.00	-21.89	Horizontal
6	5839.2299	35.12	18.11	53.23	74.00	-20.77	Horizontal

- Note: 1. Measurement = Reading Level + Correct Factor,
Correct Factor = Antenna Factor + Loss (Cable + Filter) – Amplifier Gain.
2. If Peak Result complies with AV limit, AV Result is deemed to comply with AV limit.
3. Test setup: RBW: 1 MHz, VBW: 3 MHz, Sweep time: auto.
4. Peak: Peak detector.
5. For below 3GHz part, filter losses were only considered in the spurious frequency bands and the authorized band was not corrected for Band Reject Filter losses.
6. Only the worst case emission was recorded, if it complies with the limit, the other emissions deemed to comply with the limit.

Test Mode	Channel	Polarization	Verdict
11AX HE40	MCH	Vertical	PASS

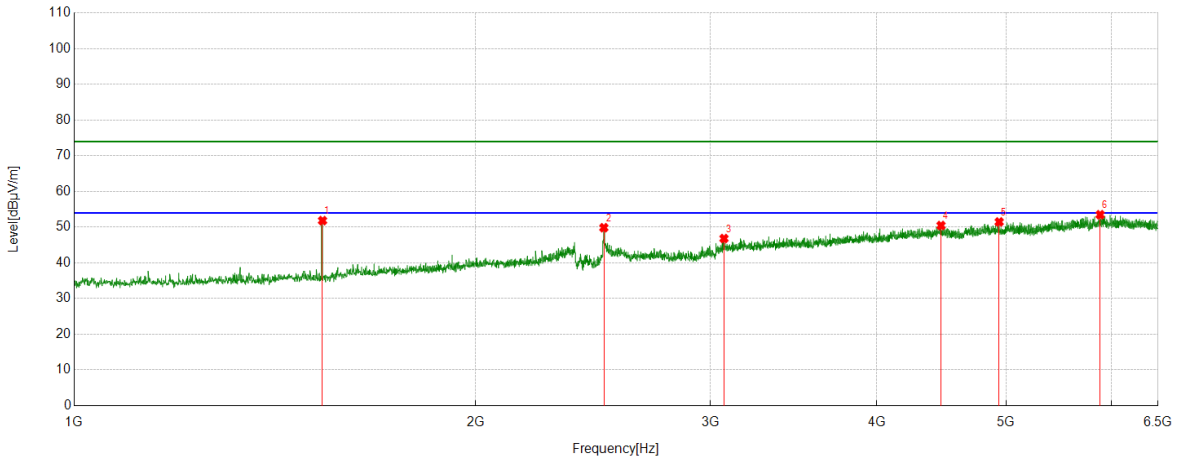


PK Result:

No.	Frequency	Reading Level	Correct Factor	Result	Limit	Margin	Remark
	[MHz]	[dBuV]	[dB/m]	[dBuV/m]	[dBuV/m]	[dB]	
1	1197.3372	40.05	-2.24	37.81	74.00	-36.19	Vertical
2	1535.6295	51.71	-0.62	51.09	74.00	-22.91	Vertical
3	2351.1064	41.59	4.77	46.36	74.00	-27.64	Vertical
4	4686.8359	35.26	15.46	50.72	74.00	-23.28	Vertical
5	5825.4782	35.07	18.67	53.74	74.00	-20.26	Vertical
6	6011.1264	34.82	18.12	52.94	74.00	-21.06	Vertical

- Note: 1. Measurement = Reading Level + Correct Factor,
Correct Factor = Antenna Factor + Loss (Cable + Filter) – Amplifier Gain.
2. If Peak Result complies with AV limit, AV Result is deemed to comply with AV limit.
3. Test setup: RBW: 1 MHz, VBW: 3 MHz, Sweep time: auto.
4. Peak: Peak detector.
5. For below 3GHz part, filter losses were only considered in the spurious frequency bands and the authorized band was not corrected for Band Reject Filter losses.
6. Only the worst case emission was recorded, if it complies with the limit, the other emissions deemed to comply with the limit.

Test Mode	Channel	Polarization	Verdict
11AX HE40	HCH	Horizontal	PASS

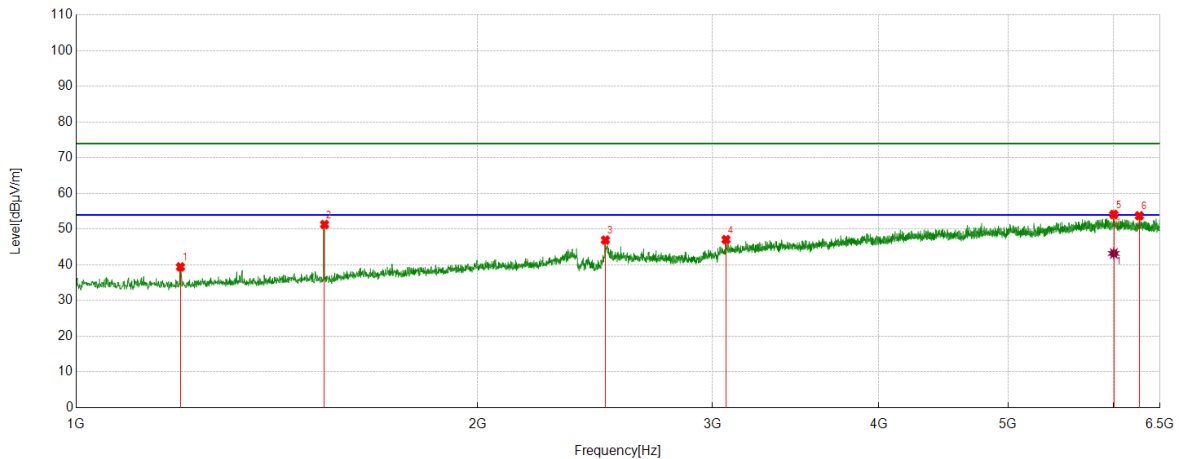


PK Result:

No.	Frequency	Reading Level	Correct Factor	Result	Limit	Margin	Remark
	[MHz]	[dBuV]	[dB/m]	[dBuV/m]	[dBuV/m]	[dB]	
1	1535.6295	52.46	-0.62	51.84	74.00	-22.16	Horizontal
2	2496.1870	44.00	5.86	49.86	74.00	-24.14	Horizontal
3	3071.6965	37.55	9.27	46.82	74.00	-27.18	Horizontal
4	4468.1835	35.89	14.58	50.47	74.00	-23.53	Horizontal
5	4940.5551	36.00	15.48	51.48	74.00	-22.52	Horizontal
6	5881.8602	35.77	17.72	53.49	74.00	-20.51	Horizontal

- Note: 1. Measurement = Reading Level + Correct Factor,
Correct Factor = Antenna Factor + Loss (Cable + Filter) – Amplifier Gain.
2. If Peak Result complies with AV limit, AV Result is deemed to comply with AV limit.
3. Test setup: RBW: 1 MHz, VBW: 3 MHz, Sweep time: auto.
4. Peak: Peak detector.
5. For below 3GHz part, filter losses were only considered in the spurious frequency bands and the authorized band was not corrected for Band Reject Filter losses.
6. Only the worst case emission was recorded, if it complies with the limit, the other emissions deemed to comply with the limit.

Test Mode	Channel	Polarization	Verdict
11AX HE40	HCH	Vertical	PASS



PK Result:

No.	Frequency	Reading Level	Correct Factor	Result	Limit	Margin	Remark
	[MHz]	[dBuV]	[dB/m]	[dBuV/m]	[dBuV/m]	[dB]	
1	1197.3372	41.68	-2.24	39.44	74.00	-34.56	Vertical
2	1535.6295	51.93	-0.62	51.31	74.00	-22.69	Vertical
3	2494.1243	41.11	5.83	46.94	74.00	-27.06	Vertical
4	3071.6965	37.82	9.27	47.09	74.00	-26.91	Vertical
5	6001.5002	35.89	18.23	54.12	74.00	-19.88	Vertical
6	6271.7215	35.06	18.70	53.76	74.00	-20.24	Vertical

AV Result:

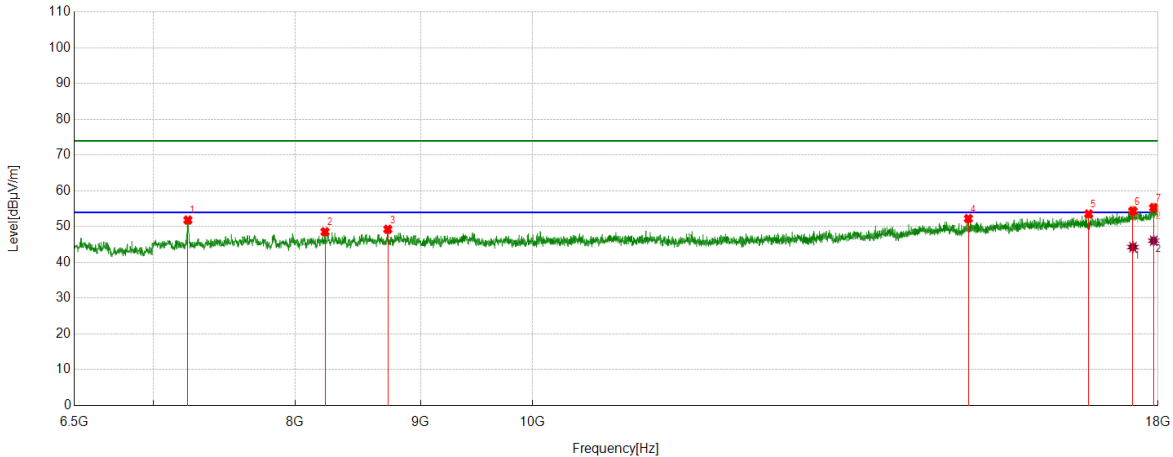
No.	Frequency	Reading Level	Correct Factor	Result	Limit	Margin	Remark
	[MHz]	[dBuV]	[dB/m]	[dBuV/m]	[dBuV/m]	[dB]	
1	6001.5002	24.97	18.23	43.20	54.00	-10.80	Horizontal

- Note: 1. Measurement = Reading Level + Correct Factor,
Correct Factor = Antenna Factor + Loss (Cable + Filter) – Amplifier Gain.
2. If Peak Result complies with AV limit, AV Result is deemed to comply with AV limit.
3. Test setup: RBW: 1 MHz, VBW: 3 MHz, Sweep time: auto.
4. Peak: Peak detector.
5. For below 3GHz part, filter losses were only considered in the spurious frequency bands and the authorized band was not corrected for Band Reject Filter losses.
6. Only the worst case emission was recorded, if it complies with the limit, the other emissions deemed to comply with the limit.

Part 2: 6.5GHz~18GHz

HARMONICS AND SPURIOUS EMISSIONS

Test Mode	Channel	Polarization	Verdict
11B	LCH	Horizontal	PASS



PK Result:

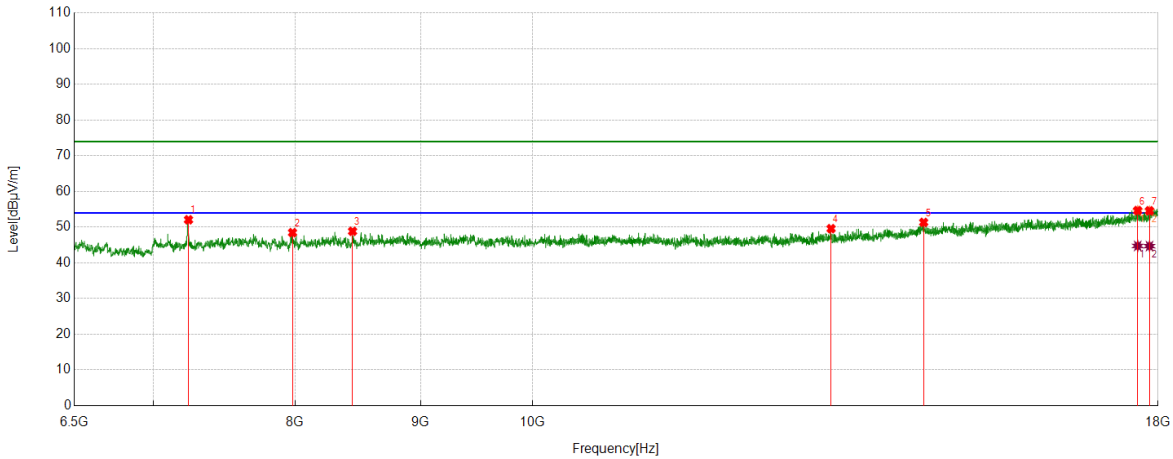
No.	Frequency	Reading Level	Correct Factor	Result	Limit	Margin	Remark
	[MHz]	[dBuV]	[dB/m]	[dBuV/m]	[dBuV/m]	[dB]	
1	7233.2167	47.98	3.86	51.84	74.00	-22.16	Horizontal
2	8228.0910	42.45	6.10	48.55	74.00	-25.45	Horizontal
3	8728.4036	43.10	6.15	49.25	74.00	-24.75	Horizontal
4	15061.3827	39.19	13.07	52.26	74.00	-21.74	Horizontal
5	16864.2330	37.28	16.25	53.53	74.00	-20.47	Horizontal
6	17580.1975	36.45	17.95	54.40	74.00	-19.60	Horizontal
7	17926.6783	35.94	19.37	55.31	74.00	-18.69	Horizontal

AV Result:

No.	Frequency	Reading Level	Correct Factor	Result	Limit	Margin	Remark
	[MHz]	[dBuV]	[dB/m]	[dBuV/m]	[dBuV/m]	[dB]	
1	17580.1975	26.32	17.95	44.27	54.00	-9.73	Horizontal
2	17926.6783	26.69	19.37	46.06	54.00	-7.94	Horizontal

- Note: 1. Measurement = Reading Level + Correct Factor,
Correct Factor = Antenna Factor + Loss (Cable + Filter) – Amplifier Gain.
2. If Peak Result complies with AV limit, AV Result is deemed to comply with AV limit.
 3. Peak detector: RBW: 1 MHz, VBW: 3 MHz.
 4. Average detector: RBW: 1 MHz, VBW: 1/T MHz(refer to clause 7.1.).
 5. For above 3GHz part, filter losses were only considered in the spurious frequency bands and the authorized band was not corrected for HPF losses.
 6. Only the worst case emission was recorded, if it complies with the limit, the other emissions deemed to comply with the limit.

Test Mode	Channel	Polarization	Verdict
11B	LCH	Vertical	PASS



PK Result:

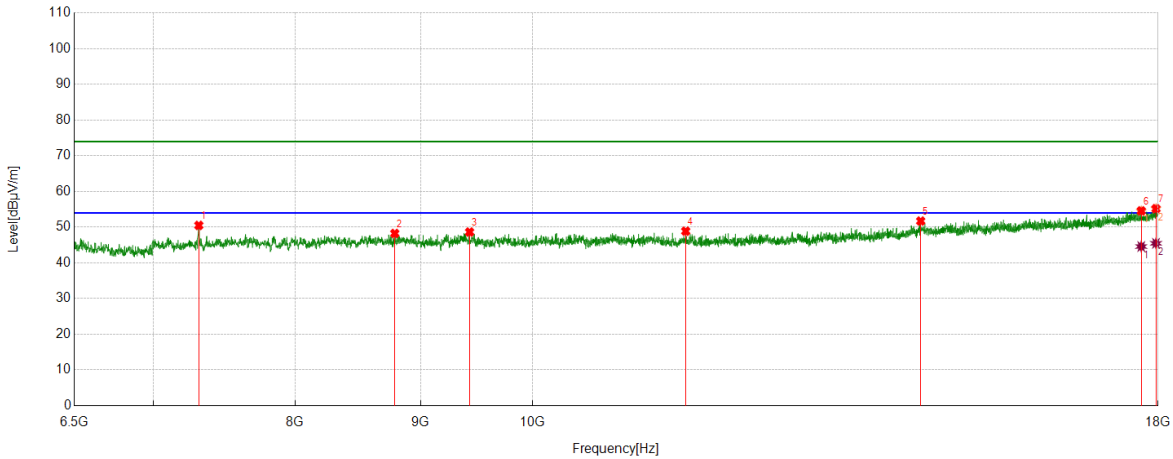
No.	Frequency	Reading Level	Correct Factor	Result	Limit	Margin	Remark
	[MHz]	[dBuV]	[dB/m]	[dBuV/m]	[dBuV/m]	[dB]	
1	7237.5297	48.30	3.78	52.08	74.00	-21.92	Vertical
2	7980.8101	43.09	5.38	48.47	74.00	-25.53	Vertical
3	8443.7430	42.82	6.03	48.85	74.00	-25.15	Vertical
4	13238.4048	39.36	10.23	49.59	74.00	-24.41	Vertical
5	14441.7427	38.46	12.88	51.34	74.00	-22.66	Vertical
6	17659.2699	36.59	18.07	54.66	74.00	-19.34	Vertical
7	17856.2320	35.38	19.22	54.60	74.00	-19.40	Vertical

AV Result:

No.	Frequency	Reading Level	Correct Factor	Result	Limit	Margin	Remark
	[MHz]	[dBuV]	[dB/m]	[dBuV/m]	[dBuV/m]	[dB]	
1	17659.2699	26.68	18.07	44.75	54.00	-9.25	Vertical
2	17856.2320	25.48	19.22	44.70	54.00	-9.30	Vertical

- Note: 1. Measurement = Reading Level + Correct Factor,
Correct Factor = Antenna Factor + Loss (Cable + Filter) – Amplifier Gain.
- If Peak Result complies with AV limit, AV Result is deemed to comply with AV limit.
 - Peak detector: RBW: 1 MHz, VBW: 3 MHz.
 - Average detector: RBW: 1 MHz, VBW: 1/T MHz(refer to clause 7.1.).
 - For above 3GHz part, filter losses were only considered in the spurious frequency bands and the authorized band was not corrected for HPF losses.
 - Only the worst case emission was recorded, if it complies with the limit, the other emissions deemed to comply with the limit.

Test Mode	Channel	Polarization	Verdict
11B	MCH	Horizontal	PASS



PK Result:

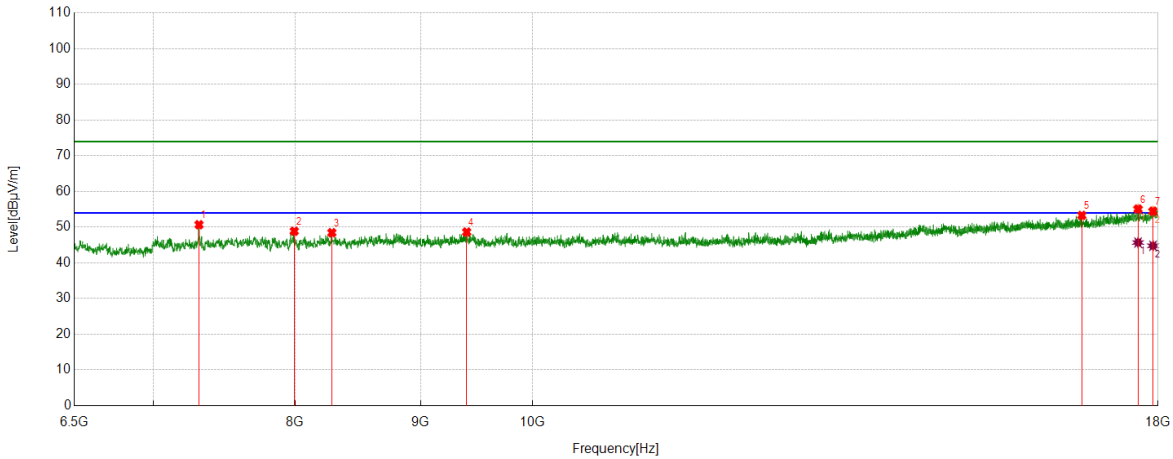
No.	Frequency	Reading Level	Correct Factor	Result	Limit	Margin	Remark
	[MHz]	[dBuV]	[dB/m]	[dBuV/m]	[dBuV/m]	[dB]	
1	7307.9760	46.68	3.82	50.50	74.00	-23.50	Horizontal
2	8785.9107	42.05	6.20	48.25	74.00	-25.75	Horizontal
3	9425.6782	42.01	6.63	48.64	74.00	-25.36	Horizontal
4	11547.6935	41.33	7.55	48.88	74.00	-25.12	Horizontal
5	14401.4877	38.97	12.75	51.72	74.00	-22.28	Horizontal
6	17718.2148	36.11	18.46	54.57	74.00	-19.43	Horizontal
7	17965.4957	35.55	19.63	55.18	74.00	-18.82	Horizontal

AV Result:

No.	Frequency	Reading Level	Correct Factor	Result	Limit	Margin	Remark
	[MHz]	[dBuV]	[dB/m]	[dBuV/m]	[dBuV/m]	[dB]	
1	17718.2148	26.12	18.46	44.58	54.00	-9.42	Horizontal
2	17965.4957	25.85	19.63	45.48	54.00	-8.52	Horizontal

- Note: 1. Measurement = Reading Level + Correct Factor,
Correct Factor = Antenna Factor + Loss (Cable + Filter) – Amplifier Gain.
- If Peak Result complies with AV limit, AV Result is deemed to comply with AV limit.
 - Peak detector: RBW: 1 MHz, VBW: 3 MHz.
 - Average detector: RBW: 1 MHz, VBW: 1/T MHz(refer to clause 7.1.).
 - For above 3GHz part, filter losses were only considered in the spurious frequency bands and the authorized band was not corrected for HPF losses.
 - Only the worst case emission was recorded, if it complies with the limit, the other emissions deemed to comply with the limit.

Test Mode	Channel	Polarization	Verdict
11B	MCH	Vertical	PASS



PK Result:

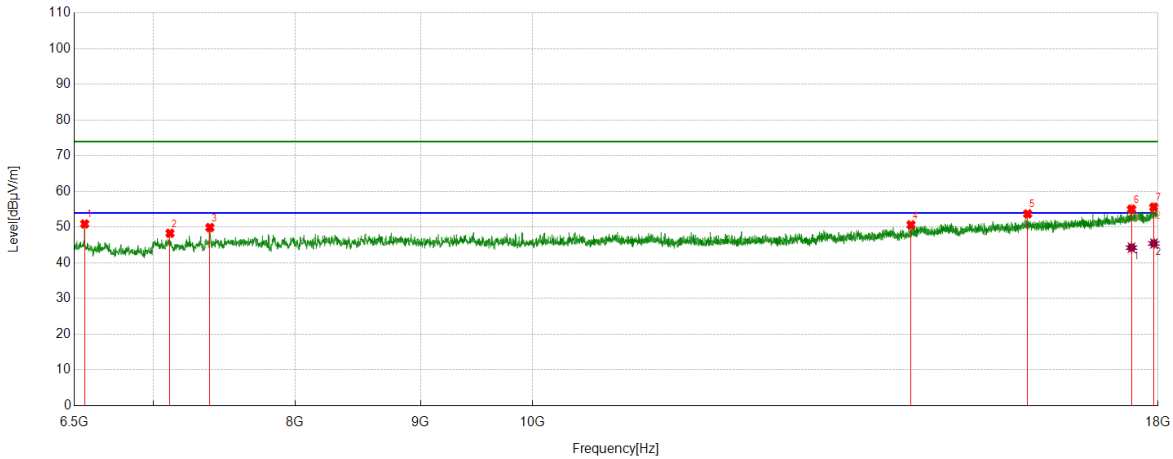
No.	Frequency	Reading Level	Correct Factor	Result	Limit	Margin	Remark
	[MHz]	[dBuV]	[dB/m]	[dBuV/m]	[dBuV/m]	[dB]	
1	7309.4137	46.85	3.85	50.70	74.00	-23.30	Vertical
2	7993.7492	43.38	5.49	48.87	74.00	-25.13	Vertical
3	8281.2852	42.06	6.39	48.45	74.00	-25.55	Vertical
4	9399.8000	42.03	6.61	48.64	74.00	-25.36	Vertical
5	16756.4071	37.12	16.18	53.30	74.00	-20.70	Vertical
6	17665.0206	37.01	18.07	55.08	74.00	-18.92	Vertical
7	17915.1769	35.17	19.31	54.48	74.00	-19.52	Vertical

AV Result:

No.	Frequency	Reading Level	Correct Factor	Result	Limit	Margin	Remark
	[MHz]	[dBuV]	[dB/m]	[dBuV/m]	[dBuV/m]	[dB]	
1	17665.0206	27.63	18.07	45.70	54.00	-8.30	Vertical
2	17915.1769	25.48	19.31	44.79	54.00	-9.21	Vertical

- Note: 1. Measurement = Reading Level + Correct Factor,
Correct Factor = Antenna Factor + Loss (Cable + Filter) – Amplifier Gain.
- If Peak Result complies with AV limit, AV Result is deemed to comply with AV limit.
 - Peak detector: RBW: 1 MHz, VBW: 3 MHz.
 - Average detector: RBW: 1 MHz, VBW: 1/T MHz(refer to clause 7.1.).
 - For above 3GHz part, filter losses were only considered in the spurious frequency bands and the authorized band was not corrected for HPF losses.
 - Only the worst case emission was recorded, if it complies with the limit, the other emissions deemed to comply with the limit.

Test Mode	Channel	Polarization	Verdict
11B	HCH	Horizontal	PASS



PK Result:

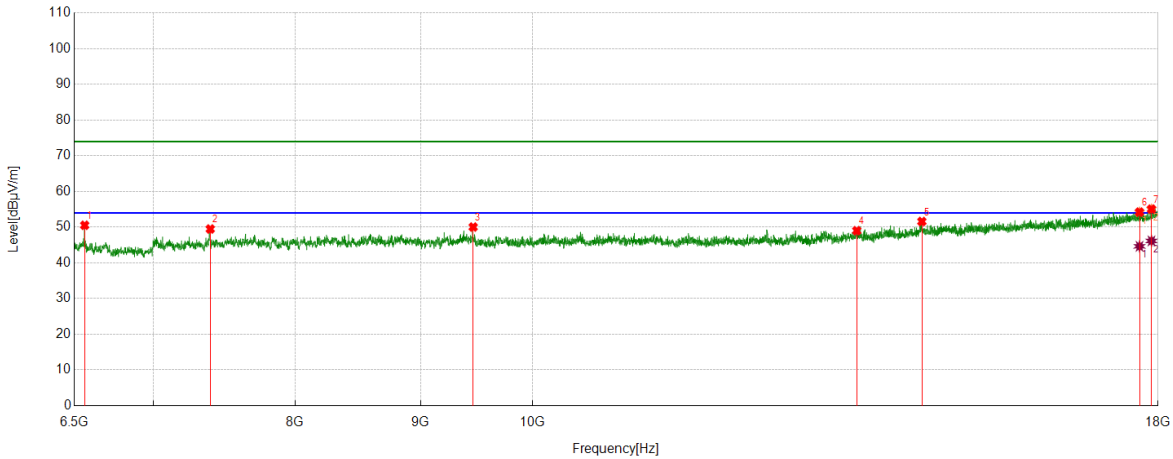
No.	Frequency	Reading Level	Correct Factor	Result	Limit	Margin	Remark
	[MHz]	[dBuV]	[dB/m]	[dBuV/m]	[dBuV/m]	[dB]	
1	6564.6956	47.55	3.37	50.92	74.00	-23.08	Horizontal
2	7112.4516	44.38	3.91	48.29	74.00	-25.71	Horizontal
3	7384.1730	45.74	4.16	49.90	74.00	-24.10	Horizontal
4	14270.6588	38.58	12.08	50.66	74.00	-23.34	Horizontal
5	15923.9905	39.21	14.52	53.73	74.00	-20.27	Horizontal
6	17557.1946	37.28	17.77	55.05	74.00	-18.95	Horizontal
7	17929.5537	36.24	19.37	55.61	74.00	-18.39	Horizontal

AV Result:

No.	Frequency	Reading Level	Correct Factor	Result	Limit	Margin	Remark
	[MHz]	[dBuV]	[dB/m]	[dBuV/m]	[dBuV/m]	[dB]	
1	17557.1946	26.50	17.77	44.27	54.00	-9.73	Horizontal
2	17929.5537	26.07	19.37	45.44	54.00	-8.56	Horizontal

- Note: 1. Measurement = Reading Level + Correct Factor,
Correct Factor = Antenna Factor + Loss (Cable + Filter) – Amplifier Gain.
- If Peak Result complies with AV limit, AV Result is deemed to comply with AV limit.
 - Peak detector: RBW: 1 MHz, VBW: 3 MHz.
 - Average detector: RBW: 1 MHz, VBW: 1/T MHz(refer to clause 7.1.).
 - For above 3GHz part, filter losses were only considered in the spurious frequency bands and the authorized band was not corrected for HPF losses.
 - Only the worst case emission was recorded, if it complies with the limit, the other emissions deemed to comply with the limit.

Test Mode	Channel	Polarization	Verdict
11B	HCH	Vertical	PASS



PK Result:

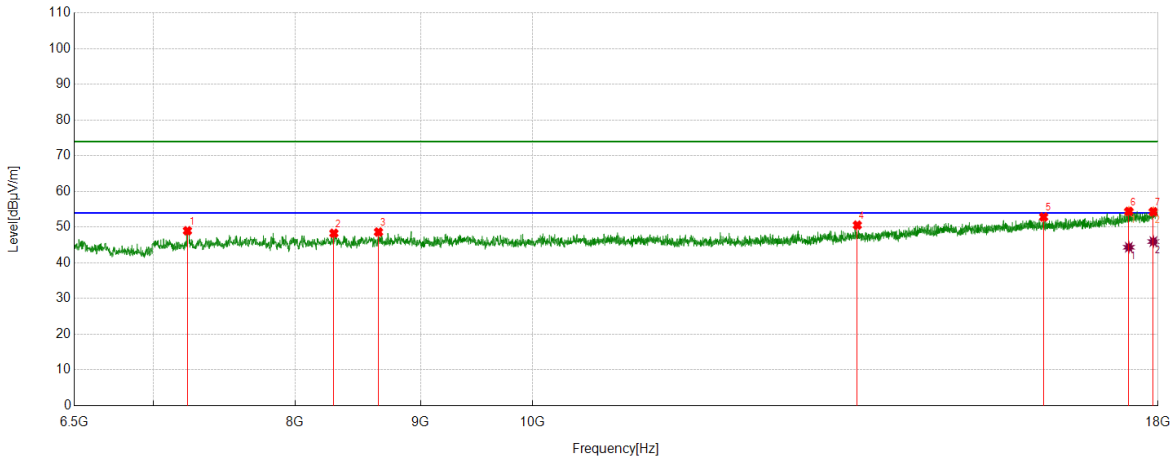
No.	Frequency	Reading Level	Correct Factor	Result	Limit	Margin	Remark
	[MHz]	[dBuV]	[dB/m]	[dBuV/m]	[dBuV/m]	[dB]	
1	6564.6956	47.17	3.37	50.54	74.00	-23.46	Vertical
2	7387.0484	45.34	4.15	49.49	74.00	-24.51	Vertical
3	9457.3072	43.47	6.57	50.04	74.00	-23.96	Vertical
4	13561.8827	38.15	10.87	49.02	74.00	-24.98	Vertical
5	14417.3022	38.68	12.91	51.59	74.00	-22.41	Vertical
6	17689.4612	36.04	18.18	54.22	74.00	-19.78	Vertical
7	17889.2987	35.76	19.30	55.06	74.00	-18.94	Vertical

AV Result:

No.	Frequency	Reading Level	Correct Factor	Result	Limit	Margin	Remark
	[MHz]	[dBuV]	[dB/m]	[dBuV/m]	[dBuV/m]	[dB]	
1	17689.4612	26.46	18.18	44.64	54.00	-9.36	Vertical
2	17889.2987	26.85	19.30	46.15	54.00	-7.85	Vertical

- Note: 1. Measurement = Reading Level + Correct Factor,
Correct Factor = Antenna Factor + Loss (Cable + Filter) – Amplifier Gain.
- If Peak Result complies with AV limit, AV Result is deemed to comply with AV limit.
 - Peak detector: RBW: 1 MHz, VBW: 3 MHz.
 - Average detector: RBW: 1 MHz, VBW: 1/T MHz(refer to clause 7.1.).
 - For above 3GHz part, filter losses were only considered in the spurious frequency bands and the authorized band was not corrected for HPF losses.
 - Only the worst case emission was recorded, if it complies with the limit, the other emissions deemed to comply with the limit.

Test Mode	Channel	Polarization	Verdict
11G	LCH	Horizontal	PASS



PK Result:

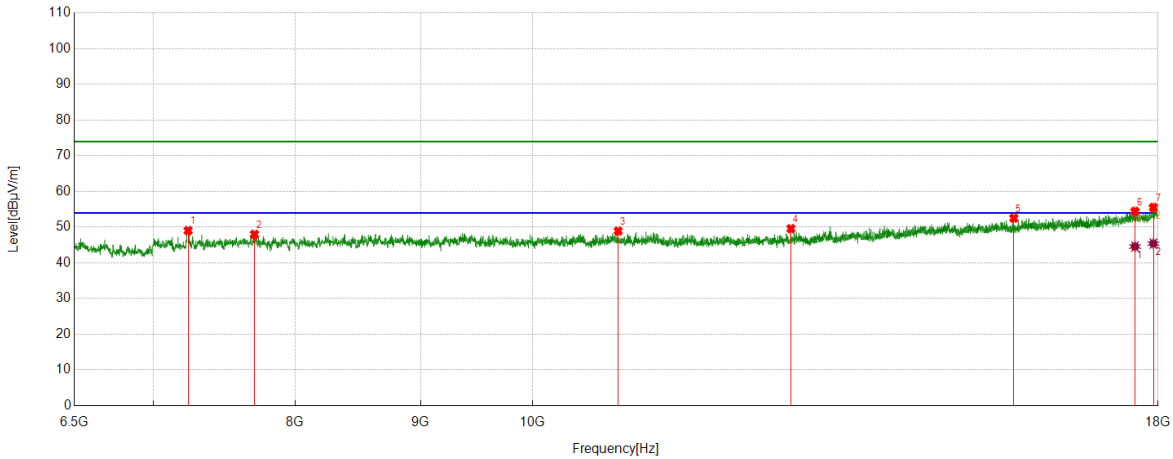
No.	Frequency	Reading Level	Correct Factor	Result	Limit	Margin	Remark
	[MHz]	[dBuV]	[dB/m]	[dBuV/m]	[dBuV/m]	[dB]	
1	7230.3413	45.09	3.91	49.00	74.00	-25.00	Horizontal
2	8297.0996	42.07	6.22	48.29	74.00	-25.71	Horizontal
3	8652.2065	42.47	6.17	48.64	74.00	-25.36	Horizontal
4	13569.0711	39.90	10.67	50.57	74.00	-23.43	Horizontal
5	16165.5207	37.77	15.08	52.85	74.00	-21.15	Horizontal
6	17512.6266	36.80	17.62	54.42	74.00	-19.58	Horizontal
7	17920.9276	34.96	19.36	54.32	74.00	-19.68	Horizontal

AV Result:

No.	Frequency	Reading Level	Correct Factor	Result	Limit	Margin	Remark
	[MHz]	[dBuV]	[dB/m]	[dBuV/m]	[dBuV/m]	[dB]	
1	17512.6266	26.75	17.62	44.37	54.00	-9.63	Horizontal
2	17920.9276	26.61	19.36	45.97	54.00	-8.03	Horizontal

- Note: 1. Measurement = Reading Level + Correct Factor,
Correct Factor = Antenna Factor + Loss (Cable + Filter) – Amplifier Gain.
- If Peak Result complies with AV limit, AV Result is deemed to comply with AV limit.
 - Peak detector: RBW: 1 MHz, VBW: 3 MHz.
 - Average detector: RBW: 1 MHz, VBW: 1/T MHz(refer to clause 7.1.).
 - For above 3GHz part, filter losses were only considered in the spurious frequency bands and the authorized band was not corrected for HPF losses.
 - Only the worst case emission was recorded, if it complies with the limit, the other emissions deemed to comply with the limit.

Test Mode	Channel	Polarization	Verdict
11G	LCH	Vertical	PASS



PK Result:

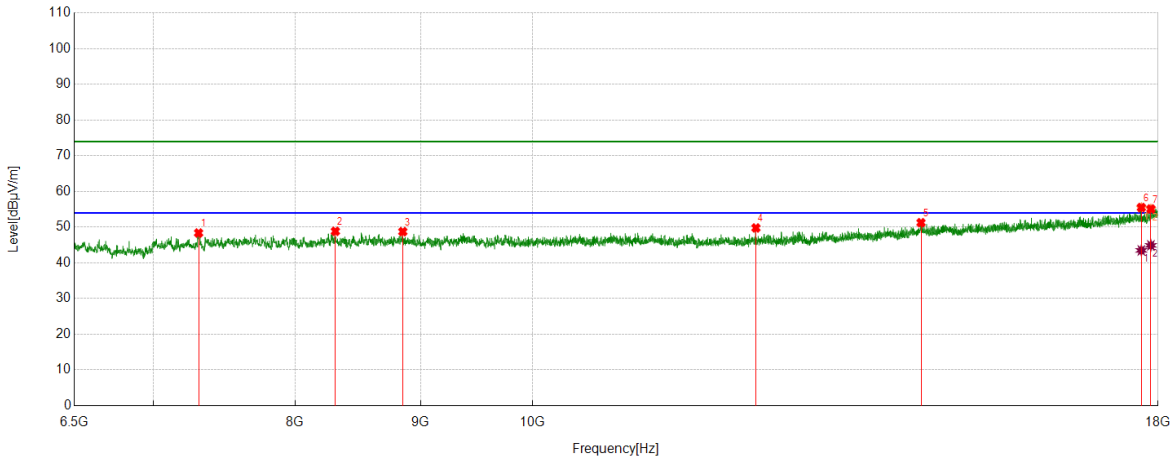
No.	Frequency	Reading Level	Correct Factor	Result	Limit	Margin	Remark
	[MHz]	[dBuV]	[dB/m]	[dBuV/m]	[dBuV/m]	[dB]	
1	7234.6543	45.21	3.84	49.05	74.00	-24.95	Vertical
2	7700.4626	42.40	5.60	48.00	74.00	-26.00	Vertical
3	10837.4797	41.88	7.05	48.93	74.00	-25.07	Vertical
4	12748.1560	40.74	8.84	49.58	74.00	-24.42	Vertical
5	15718.4023	38.48	14.04	52.52	74.00	-21.48	Vertical
6	17614.7018	36.36	18.06	54.42	74.00	-19.58	Vertical
7	17922.3653	36.15	19.37	55.52	74.00	-18.48	Vertical

AV Result:

No.	Frequency	Reading Level	Correct Factor	Result	Limit	Margin	Remark
	[MHz]	[dBuV]	[dB/m]	[dBuV/m]	[dBuV/m]	[dB]	
1	17614.7018	26.52	18.06	44.58	54.00	-9.42	Vertical
2	17922.3653	26.03	19.37	45.40	54.00	-8.60	Vertical

- Note: 1. Measurement = Reading Level + Correct Factor,
Correct Factor = Antenna Factor + Loss (Cable + Filter) – Amplifier Gain.
- If Peak Result complies with AV limit, AV Result is deemed to comply with AV limit.
 - Peak detector: RBW: 1 MHz, VBW: 3 MHz.
 - Average detector: RBW: 1 MHz, VBW: 1/T MHz(refer to clause 7.1.).
 - For above 3GHz part, filter losses were only considered in the spurious frequency bands and the authorized band was not corrected for HPF losses.
 - Only the worst case emission was recorded, if it complies with the limit, the other emissions deemed to comply with the limit.

Test Mode	Channel	Polarization	Verdict
11G	MCH	Horizontal	PASS


PK Result:

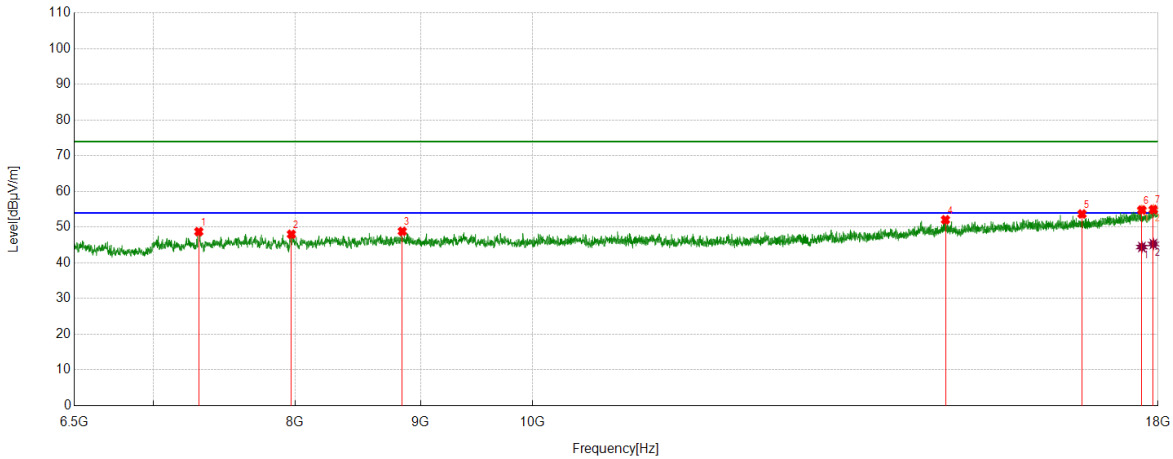
No.	Frequency	Reading Level	Correct Factor	Result	Limit	Margin	Remark
	[MHz]	[dBuV]	[dB/m]	[dBuV/m]	[dBuV/m]	[dB]	
1	7306.5383	44.57	3.80	48.37	74.00	-25.63	Horizontal
2	8308.6011	42.51	6.34	48.85	74.00	-25.15	Horizontal
3	8852.0440	42.57	6.18	48.75	74.00	-25.25	Horizontal
4	12335.5419	41.22	8.56	49.78	74.00	-24.22	Horizontal
5	14405.8007	38.43	12.83	51.26	74.00	-22.74	Horizontal
6	17719.6525	37.03	18.48	55.51	74.00	-18.49	Horizontal
7	17879.2349	35.92	19.18	55.10	74.00	-18.90	Horizontal

AV Result:

No.	Frequency	Reading Level	Correct Factor	Result	Limit	Margin	Remark
	[MHz]	[dBuV]	[dB/m]	[dBuV/m]	[dBuV/m]	[dB]	
1	17719.6525	25.02	18.48	43.50	54.00	-10.50	Horizontal
2	17879.2349	25.72	19.18	44.90	54.00	-9.10	Horizontal

- Note: 1. Measurement = Reading Level + Correct Factor,
 Correct Factor = Antenna Factor + Loss (Cable + Filter) – Amplifier Gain.
- If Peak Result complies with AV limit, AV Result is deemed to comply with AV limit.
 - Peak detector: RBW: 1 MHz, VBW: 3 MHz.
 - Average detector: RBW: 1 MHz, VBW: 1/T MHz(refer to clause 7.1.).
 - For above 3GHz part, filter losses were only considered in the spurious frequency bands and the authorized band was not corrected for HPF losses.
 - Only the worst case emission was recorded, if it complies with the limit, the other emissions deemed to comply with the limit.

Test Mode	Channel	Polarization	Verdict
11G	MCH	Vertical	PASS



PK Result:

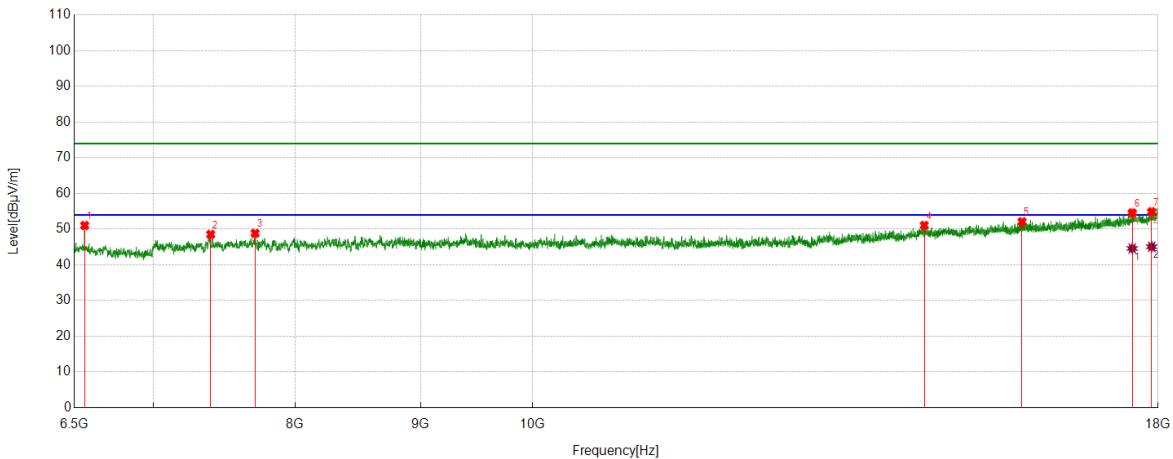
No.	Frequency	Reading Level	Correct Factor	Result	Limit	Margin	Remark
	[MHz]	[dBuV]	[dB/m]	[dBuV/m]	[dBuV/m]	[dB]	
1	7307.976	44.93	3.82	48.75	74.00	-25.25	Vertical
2	7972.1840	42.62	5.39	48.01	74.00	-25.99	Vertical
3	8847.7310	42.61	6.23	48.84	74.00	-25.16	Vertical
4	14740.7801	39.17	12.90	52.07	74.00	-21.93	Vertical
5	16759.2824	37.61	16.09	53.70	74.00	-20.30	Vertical
6	17728.2785	36.30	18.52	54.82	74.00	-19.18	Vertical
7	17920.9276	35.60	19.36	54.96	74.00	-19.04	Vertical

AV Result:

No.	Frequency	Reading Level	Correct Factor	Result	Limit	Margin	Remark
	[MHz]	[dBuV]	[dB/m]	[dBuV/m]	[dBuV/m]	[dB]	
1	17728.2785	25.93	18.52	44.45	54.00	-9.55	Vertical
2	17920.9276	25.92	19.36	45.28	54.00	-8.72	Vertical

- Note: 1. Measurement = Reading Level + Correct Factor,
Correct Factor = Antenna Factor + Loss (Cable + Filter) – Amplifier Gain.
- If Peak Result complies with AV limit, AV Result is deemed to comply with AV limit.
 - Peak detector: RBW: 1 MHz, VBW: 3 MHz.
 - Average detector: RBW: 1 MHz, VBW: 1/T MHz(refer to clause 7.1.).
 - For above 3GHz part, filter losses were only considered in the spurious frequency bands and the authorized band was not corrected for HPF losses.
 - Only the worst case emission was recorded, if it complies with the limit, the other emissions deemed to comply with the limit.

Test Mode	Channel	Polarization	Verdict
11G	HCH	Horizontal	PASS



PK Result:

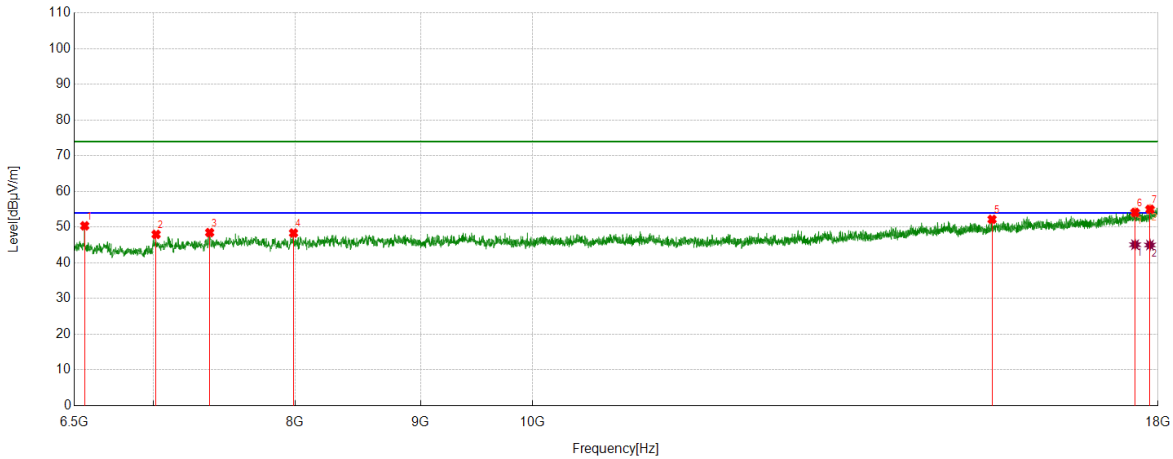
No.	Frequency	Reading Level	Correct Factor	Result	Limit	Margin	Remark
	[MHz]	[dBuV]	[dB/m]	[dBuV/m]	[dBuV/m]	[dB]	
1	6564.6956	47.67	3.37	51.04	74.00	-22.96	Horizontal
2	7389.9237	44.39	4.14	48.53	74.00	-25.47	Horizontal
3	7704.7756	43.45	5.40	48.85	74.00	-25.15	Horizontal
4	14450.3688	38.14	12.93	51.07	74.00	-22.93	Horizontal
5	15840.6051	37.55	14.54	52.09	74.00	-21.91	Horizontal
6	17568.6961	36.67	17.89	54.56	74.00	-19.44	Horizontal
7	17892.1740	35.56	19.29	54.85	74.00	-19.15	Horizontal

AV Result:

No.	Frequency	Reading Level	Correct Factor	Result	Limit	Margin	Remark
	[MHz]	[dBuV]	[dB/m]	[dBuV/m]	[dBuV/m]	[dB]	
1	17568.6961	26.71	17.89	44.60	54.00	-9.40	Horizontal
2	17892.1740	25.79	19.29	45.08	54.00	-8.92	Horizontal

- Note: 1. Measurement = Reading Level + Correct Factor,
Correct Factor = Antenna Factor + Loss (Cable + Filter) – Amplifier Gain.
- If Peak Result complies with AV limit, AV Result is deemed to comply with AV limit.
 - Peak detector: RBW: 1 MHz, VBW: 3 MHz.
 - Average detector: RBW: 1 MHz, VBW: 1/T MHz(refer to clause 7.1.).
 - For above 3GHz part, filter losses were only considered in the spurious frequency bands and the authorized band was not corrected for HPF losses.
 - Only the worst case emission was recorded, if it complies with the limit, the other emissions deemed to comply with the limit.

Test Mode	Channel	Polarization	Verdict
11G	HCH	Vertical	PASS



PK Result:

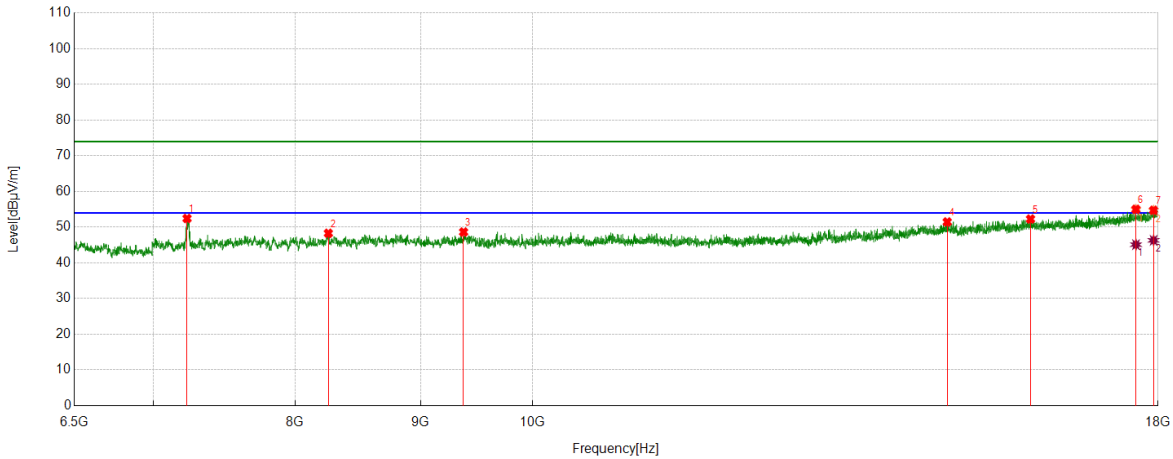
No.	Frequency	Reading Level	Correct Factor	Result	Limit	Margin	Remark
	[MHz]	[dBuV]	[dB/m]	[dBuV/m]	[dBuV/m]	[dB]	
1	6564.6956	47.01	3.37	50.38	74.00	-23.62	Vertical
2	7020.4401	44.21	3.77	47.98	74.00	-26.02	Vertical
3	7382.7353	44.31	4.17	48.48	74.00	-25.52	Vertical
4	7987.9985	42.79	5.56	48.35	74.00	-25.65	Vertical
5	15400.6751	38.52	13.67	52.19	74.00	-21.81	Vertical
6	17616.1395	36.06	18.07	54.13	74.00	-19.87	Vertical
7	17864.8581	35.78	19.23	55.01	74.00	-18.99	Vertical

AV Result:

No.	Frequency	Reading Level	Correct Factor	Result	Limit	Margin	Remark
	[MHz]	[dBuV]	[dB/m]	[dBuV/m]	[dBuV/m]	[dB]	
1	17616.1395	27.02	18.07	45.09	54.00	-8.91	Vertical
2	17864.8581	25.78	19.23	45.01	54.00	-8.99	Vertical

- Note: 1. Measurement = Reading Level + Correct Factor,
Correct Factor = Antenna Factor + Loss (Cable + Filter) – Amplifier Gain.
- If Peak Result complies with AV limit, AV Result is deemed to comply with AV limit.
 - Peak detector: RBW: 1 MHz, VBW: 3 MHz.
 - Average detector: RBW: 1 MHz, VBW: 1/T MHz(refer to clause 7.1.).
 - For above 3GHz part, filter losses were only considered in the spurious frequency bands and the authorized band was not corrected for HPF losses.
 - Only the worst case emission was recorded, if it complies with the limit, the other emissions deemed to comply with the limit.

Test Mode	Channel	Polarization	Verdict
11N HT20	LCH	Horizontal	PASS



PK Result:

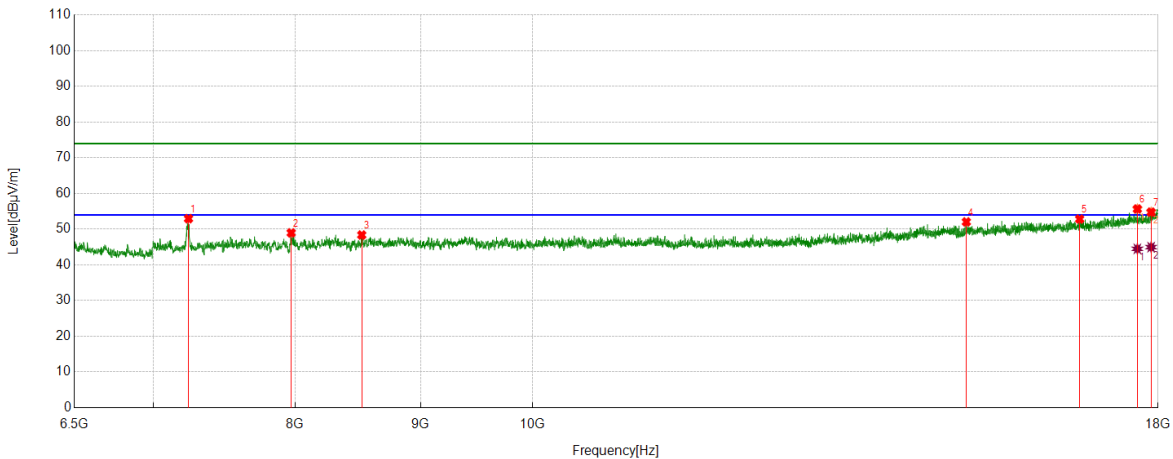
No.	Frequency	Reading Level	Correct Factor	Result	Limit	Margin	Remark
	[MHz]	[dBuV]	[dB/m]	[dBuV/m]	[dBuV/m]	[dB]	
1	7227.4659	48.57	3.87	52.44	74.00	-21.56	Horizontal
2	8253.9692	42.06	6.23	48.29	74.00	-25.71	Horizontal
3	9372.4841	42.15	6.49	48.64	74.00	-25.36	Horizontal
4	14765.2207	38.52	12.94	51.46	74.00	-22.54	Horizontal
5	15967.1209	37.79	14.49	52.28	74.00	-21.72	Horizontal
6	17630.5163	36.96	18.05	55.01	74.00	-18.99	Horizontal
7	17925.2407	35.37	19.37	54.74	74.00	-19.26	Horizontal

AV Result:

No.	Frequency	Reading Level	Correct Factor	Result	Limit	Margin	Remark
	[MHz]	[dBuV]	[dB/m]	[dBuV/m]	[dBuV/m]	[dB]	
1	17630.5163	27.06	18.05	45.11	54.00	-8.89	Horizontal
2	17925.2407	26.94	19.37	46.31	54.00	-7.69	Horizontal

- Note: 1. Measurement = Reading Level + Correct Factor,
Correct Factor = Antenna Factor + Loss (Cable + Filter) – Amplifier Gain.
- If Peak Result complies with AV limit, AV Result is deemed to comply with AV limit.
 - Peak detector: RBW: 1 MHz, VBW: 3 MHz.
 - Average detector: RBW: 1 MHz, VBW: 1/T MHz(refer to clause 7.1.).
 - For above 3GHz part, filter losses were only considered in the spurious frequency bands and the authorized band was not corrected for HPF losses.
 - Only the worst case emission was recorded, if it complies with the limit, the other emissions deemed to comply with the limit.

Test Mode	Channel	Polarization	Verdict
11N HT20	LCH	Vertical	PASS



PK Result:

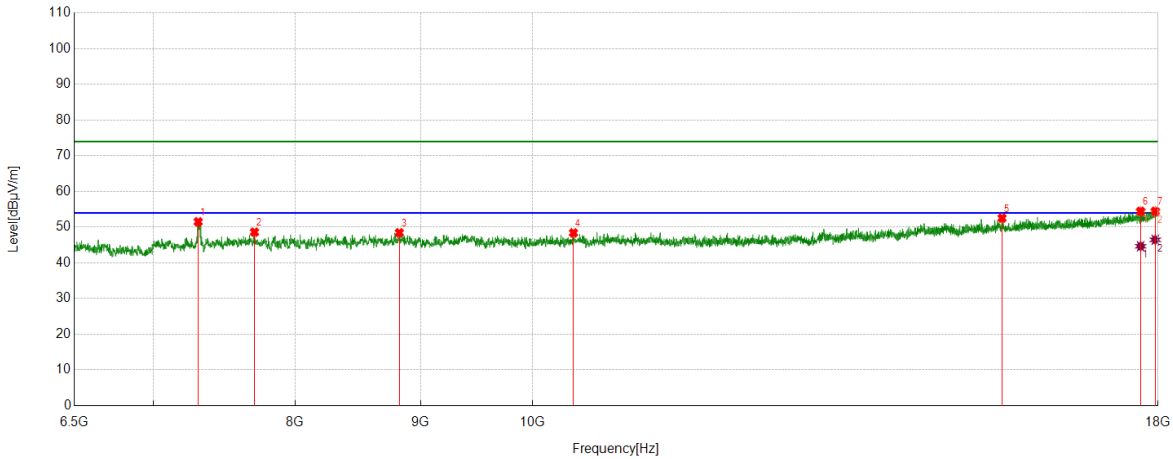
No.	Frequency	Reading Level	Correct Factor	Result	Limit	Margin	Remark
	[MHz]	[dBuV]	[dB/m]	[dBuV/m]	[dBuV/m]	[dB]	
1	7237.5297	49.16	3.78	52.94	74.00	-21.06	Vertical
2	7970.7463	43.56	5.40	48.96	74.00	-25.04	Vertical
3	8517.0646	42.04	6.33	48.37	74.00	-25.63	Vertical
4	15032.6291	39.04	13.00	52.04	74.00	-21.96	Vertical
5	16721.9027	36.53	16.30	52.83	74.00	-21.17	Vertical
6	17653.5192	37.62	18.04	55.66	74.00	-18.34	Vertical
7	17883.5479	35.54	19.23	54.77	74.00	-19.23	Vertical

AV Result:

No.	Frequency	Reading Level	Correct Factor	Result	Limit	Margin	Remark
	[MHz]	[dBuV]	[dB/m]	[dBuV/m]	[dBuV/m]	[dB]	
1	17653.5192	26.45	18.04	44.49	54.00	-9.51	Vertical
2	17883.5479	25.74	19.23	44.97	54.00	-9.03	Vertical

- Note: 1. Measurement = Reading Level + Correct Factor,
Correct Factor = Antenna Factor + Loss (Cable + Filter) – Amplifier Gain.
- If Peak Result complies with AV limit, AV Result is deemed to comply with AV limit.
 - Peak detector: RBW: 1 MHz, VBW: 3 MHz.
 - Average detector: RBW: 1 MHz, VBW: 1/T MHz(refer to clause 7.1.).
 - For above 3GHz part, filter losses were only considered in the spurious frequency bands and the authorized band was not corrected for HPF losses.
 - Only the worst case emission was recorded, if it complies with the limit, the other emissions deemed to comply with the limit.

Test Mode	Channel	Polarization	Verdict
11N HT20	MCH	Horizontal	PASS



PK Result:

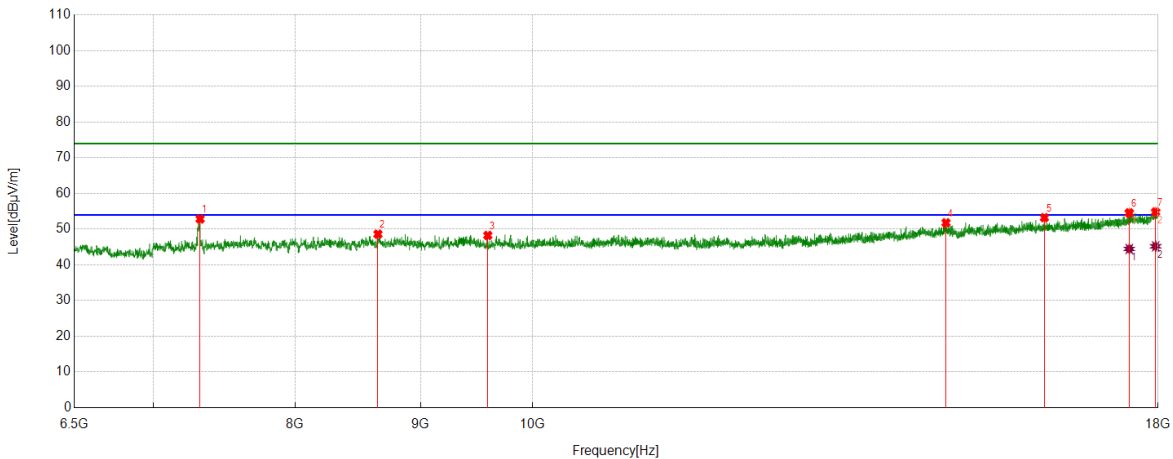
No.	Frequency	Reading Level	Correct Factor	Result	Limit	Margin	Remark
	[MHz]	[dBuV]	[dB/m]	[dBuV/m]	[dBuV/m]	[dB]	
1	7303.6630	47.77	3.74	51.51	74.00	-22.49	Horizontal
2	7700.4626	43.02	5.60	48.62	74.00	-25.38	Horizontal
3	8823.2904	42.19	6.25	48.44	74.00	-25.56	Horizontal
4	10391.799	41.76	6.64	48.40	74.00	-25.60	Horizontal
5	15545.8807	38.76	13.78	52.54	74.00	-21.46	Horizontal
6	17708.1510	36.10	18.35	54.45	74.00	-19.55	Horizontal
7	17953.9942	34.91	19.54	54.45	74.00	-19.55	Horizontal

AV Result:

No.	Frequency	Reading Level	Correct Factor	Result	Limit	Margin	Remark
	[MHz]	[dBuV]	[dB/m]	[dBuV/m]	[dBuV/m]	[dB]	
1	17708.1510	26.30	18.35	44.65	54.00	-9.35	Horizontal
2	17953.9942	26.92	19.54	46.46	54.00	-7.54	Horizontal

- Note: 1. Measurement = Reading Level + Correct Factor,
Correct Factor = Antenna Factor + Loss (Cable + Filter) – Amplifier Gain.
- If Peak Result complies with AV limit, AV Result is deemed to comply with AV limit.
 - Peak detector: RBW: 1 MHz, VBW: 3 MHz.
 - Average detector: RBW: 1 MHz, VBW: 1/T MHz(refer to clause 7.1.).
 - For above 3GHz part, filter losses were only considered in the spurious frequency bands and the authorized band was not corrected for HPF losses.
 - Only the worst case emission was recorded, if it complies with the limit, the other emissions deemed to comply with the limit.

Test Mode	Channel	Polarization	Verdict
11N HT20	MCH	Vertical	PASS



PK Result:

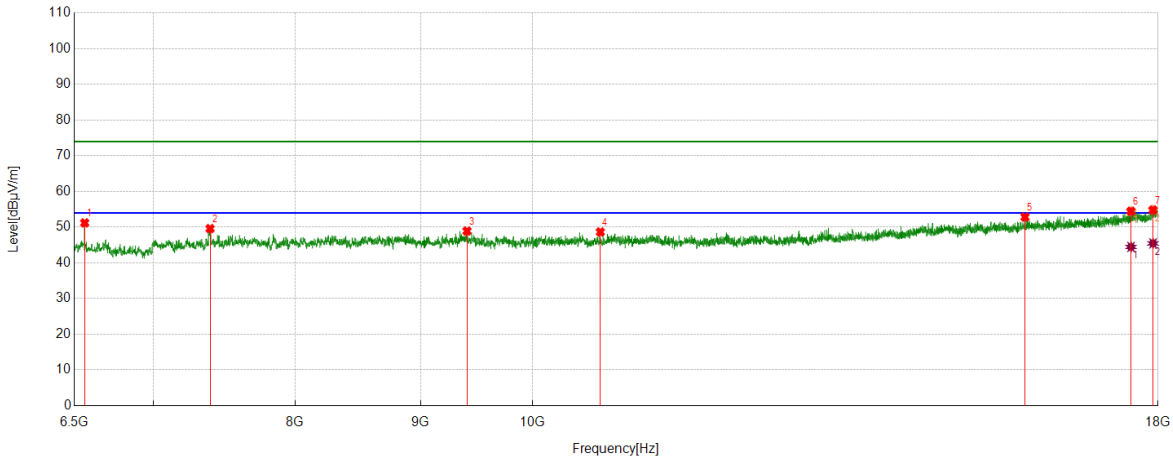
No.	Frequency	Reading Level	Correct Factor	Result	Limit	Margin	Remark
	[MHz]	[dBuV]	[dB/m]	[dBuV/m]	[dBuV/m]	[dB]	
1	7316.6021	49.04	3.82	52.86	74.00	-21.14	Vertical
2	8647.8935	42.51	6.10	48.61	74.00	-25.39	Vertical
3	9588.1360	42.02	6.23	48.25	74.00	-25.75	Vertical
4	14747.9685	38.93	12.87	51.80	74.00	-22.20	Vertical
5	16177.0221	38.17	15.06	53.23	74.00	-20.77	Vertical
6	17519.8150	36.96	17.62	54.58	74.00	-19.42	Vertical
7	17959.7450	35.20	19.63	54.83	74.00	-19.17	Vertical

AV Result:

No.	Frequency	Reading Level	Correct Factor	Result	Limit	Margin	Remark
	[MHz]	[dBuV]	[dB/m]	[dBuV/m]	[dBuV/m]	[dB]	
1	17519.8150	26.85	17.62	44.47	54.00	-9.53	Vertical
2	17959.7450	25.57	19.63	45.20	54.00	-8.80	Vertical

- Note: 1. Measurement = Reading Level + Correct Factor,
Correct Factor = Antenna Factor + Loss (Cable + Filter) – Amplifier Gain.
- If Peak Result complies with AV limit, AV Result is deemed to comply with AV limit.
 - Peak detector: RBW: 1 MHz, VBW: 3 MHz.
 - Average detector: RBW: 1 MHz, VBW: 1/T MHz(refer to clause 7.1.).
 - For above 3GHz part, filter losses were only considered in the spurious frequency bands and the authorized band was not corrected for HPF losses.
 - Only the worst case emission was recorded, if it complies with the limit, the other emissions deemed to comply with the limit.

Test Mode	Channel	Polarization	Verdict
11N HT20	HCH	Horizontal	PASS



PK Result:

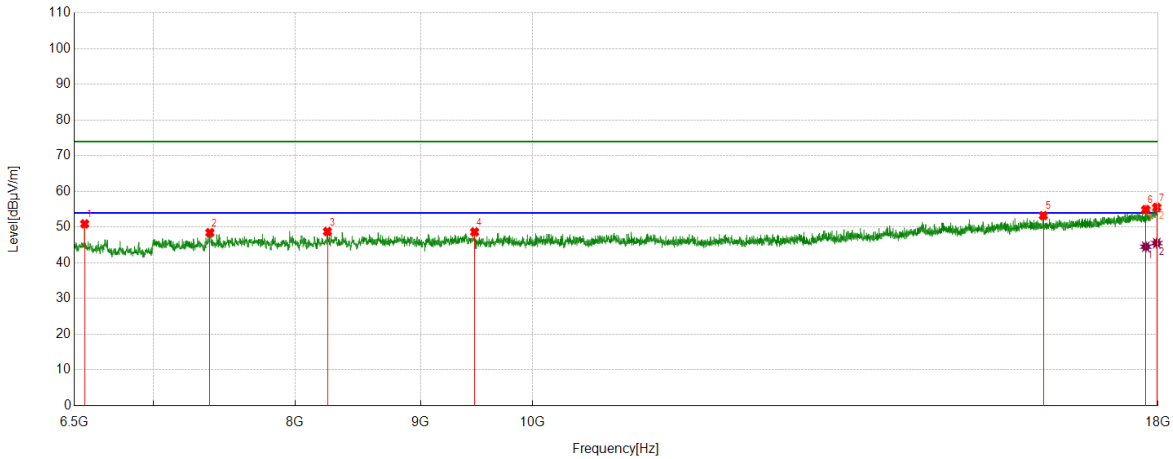
No.	Frequency	Reading Level	Correct Factor	Result	Limit	Margin	Remark
	[MHz]	[dBuV]	[dB/m]	[dBuV/m]	[dBuV/m]	[dB]	
1	6564.6956	47.83	3.37	51.20	74.00	-22.80	Horizontal
2	7385.6107	45.43	4.16	49.59	74.00	-24.41	Horizontal
3	9402.6753	42.33	6.58	48.91	74.00	-25.09	Horizontal
4	10657.7697	41.62	7.03	48.65	74.00	-25.35	Horizontal
5	15885.1731	38.18	14.64	52.82	74.00	-21.18	Horizontal
6	17548.5686	36.73	17.74	54.47	74.00	-19.53	Horizontal
7	17915.1769	35.50	19.31	54.81	74.00	-19.19	Horizontal

AV Result:

No.	Frequency	Reading Level	Correct Factor	Result	Limit	Margin	Remark
	[MHz]	[dBuV]	[dB/m]	[dBuV/m]	[dBuV/m]	[dB]	
1	17548.5686	26.73	17.74	44.47	54.00	-9.53	Horizontal
2	17915.1769	26.15	19.31	45.46	54.00	-8.54	Horizontal

- Note: 1. Measurement = Reading Level + Correct Factor,
Correct Factor = Antenna Factor + Loss (Cable + Filter) – Amplifier Gain.
- If Peak Result complies with AV limit, AV Result is deemed to comply with AV limit.
 - Peak detector: RBW: 1 MHz, VBW: 3 MHz.
 - Average detector: RBW: 1 MHz, VBW: 1/T MHz(refer to clause 7.1.).
 - For above 3GHz part, filter losses were only considered in the spurious frequency bands and the authorized band was not corrected for HPF losses.
 - Only the worst case emission was recorded, if it complies with the limit, the other emissions deemed to comply with the limit.

Test Mode	Channel	Polarization	Verdict
11N HT20	HCH	Vertical	PASS



PK Result:

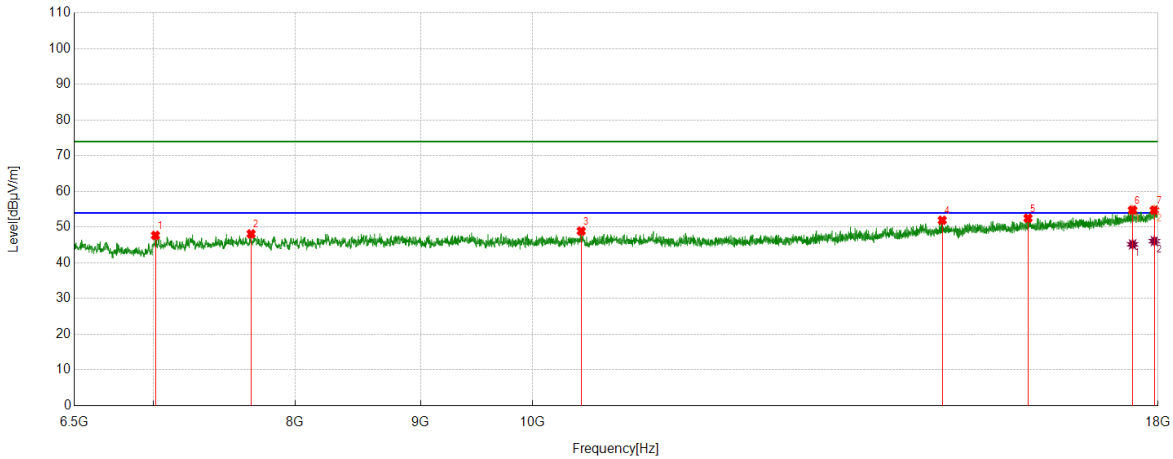
No.	Frequency	Reading Level	Correct Factor	Result	Limit	Margin	Remark
	[MHz]	[dBuV]	[dB/m]	[dBuV/m]	[dBuV/m]	[dB]	
1	6564.6956	47.56	3.37	50.93	74.00	-23.07	Vertical
2	7384.1730	44.30	4.16	48.46	74.00	-25.54	Vertical
3	8246.7808	42.61	6.17	48.78	74.00	-25.22	Vertical
4	9470.2463	42.21	6.45	48.66	74.00	-25.34	Vertical
5	16161.2077	38.31	14.95	53.26	74.00	-20.74	Vertical
6	17794.4118	36.17	18.76	54.93	74.00	-19.07	Vertical
7	17978.4348	35.76	19.79	55.55	74.00	-18.45	Vertical

AV Result:

No.	Frequency	Reading Level	Correct Factor	Result	Limit	Margin	Remark
	[MHz]	[dBuV]	[dB/m]	[dBuV/m]	[dBuV/m]	[dB]	
1	17794.4118	25.77	18.76	44.53	54.00	-9.47	Vertical
2	17978.4348	25.75	19.79	45.54	54.00	-8.46	Vertical

- Note: 1. Measurement = Reading Level + Correct Factor,
Correct Factor = Antenna Factor + Loss (Cable + Filter) – Amplifier Gain.
- If Peak Result complies with AV limit, AV Result is deemed to comply with AV limit.
 - Peak detector: RBW: 1 MHz, VBW: 3 MHz.
 - Average detector: RBW: 1 MHz, VBW: 1/T MHz(refer to clause 7.1.).
 - For above 3GHz part, filter losses were only considered in the spurious frequency bands and the authorized band was not corrected for HPF losses.
 - Only the worst case emission was recorded, if it complies with the limit, the other emissions deemed to comply with the limit.

Test Mode	Channel	Polarization	Verdict
11N HT40	LCH	Horizontal	PASS



PK Result:

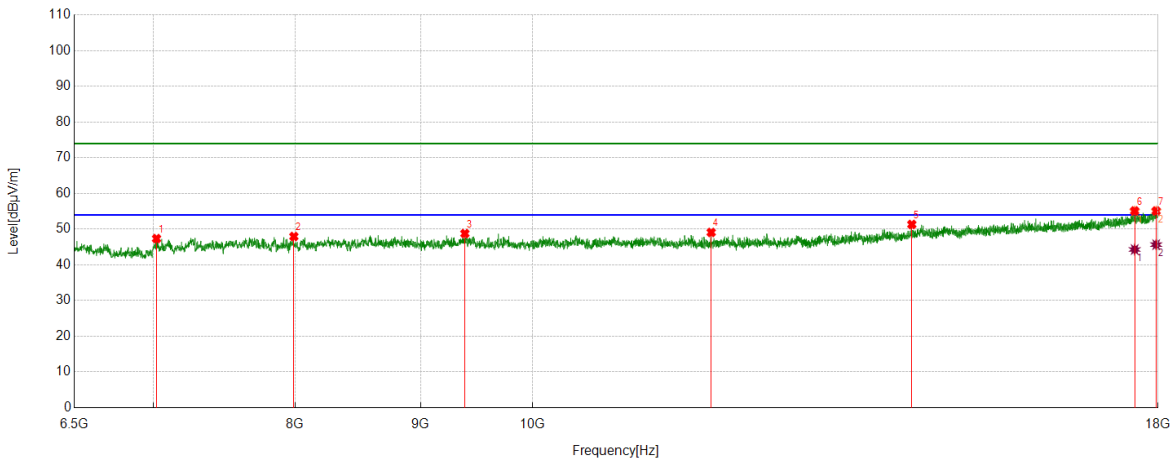
No.	Frequency	Reading Level	Correct Factor	Result	Limit	Margin	Remark
	[MHz]	[dBuV]	[dB/m]	[dBuV/m]	[dBuV/m]	[dB]	
1	7016.1270	44.02	3.67	47.69	74.00	-26.31	Horizontal
2	7676.0220	42.83	5.29	48.12	74.00	-25.88	Horizontal
3	10467.9960	42.27	6.65	48.92	74.00	-25.08	Horizontal
4	14696.2120	39.18	12.76	51.94	74.00	-22.06	Horizontal
5	15929.7412	37.87	14.64	52.51	74.00	-21.49	Horizontal
6	17574.4468	36.88	17.92	54.80	74.00	-19.20	Horizontal
7	17938.1798	35.35	19.43	54.78	74.00	-19.22	Horizontal

AV Result:

No.	Frequency	Reading Level	Correct Factor	Result	Limit	Margin	Remark
	[MHz]	[dBuV]	[dB/m]	[dBuV/m]	[dBuV/m]	[dB]	
1	17574.4468	27.27	17.92	45.19	54.00	-8.81	Horizontal
2	17938.1798	26.66	19.43	46.09	54.00	-7.91	Horizontal

- Note: 1. Measurement = Reading Level + Correct Factor,
Correct Factor = Antenna Factor + Loss (Cable + Filter) – Amplifier Gain.
- If Peak Result complies with AV limit, AV Result is deemed to comply with AV limit.
 - Peak detector: RBW: 1 MHz, VBW: 3 MHz.
 - Average detector: RBW: 1 MHz, VBW: 1/T MHz(refer to clause 7.1.).
 - For above 3GHz part, filter losses were only considered in the spurious frequency bands and the authorized band was not corrected for HPF losses.
 - Only the worst case emission was recorded, if it complies with the limit, the other emissions deemed to comply with the limit.

Test Mode	Channel	Polarization	Verdict
11N HT40	LCH	Vertical	PASS



PK Result:

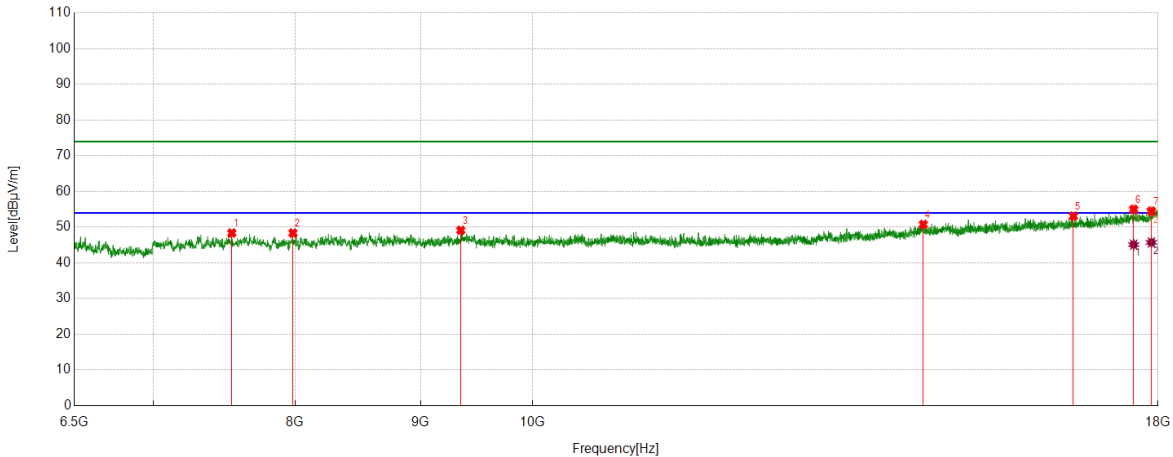
No.	Frequency	Reading Level	Correct Factor	Result	Limit	Margin	Remark
	[MHz]	[dBuV]	[dB/m]	[dBuV/m]	[dBuV/m]	[dB]	
1	7023.3154	43.64	3.72	47.36	74.00	-26.64	Vertical
2	7990.8739	42.37	5.58	47.95	74.00	-26.05	Vertical
3	9383.9855	42.27	6.50	48.77	74.00	-25.23	Vertical
4	11828.0410	41.20	7.89	49.09	74.00	-24.91	Vertical
5	14282.1603	39.17	12.16	51.33	74.00	-22.67	Vertical
6	17608.9511	37.05	18.06	55.11	74.00	-18.89	Vertical
7	17968.3710	35.47	19.63	55.10	74.00	-18.90	Vertical

AV Result:

No.	Frequency	Reading Level	Correct Factor	Result	Limit	Margin	Remark
	[MHz]	[dBuV]	[dB/m]	[dBuV/m]	[dBuV/m]	[dB]	
1	17608.9511	26.24	18.06	44.30	54.00	-9.70	Vertical
2	17968.3710	26.04	19.63	45.67	54.00	-8.33	Vertical

- Note: 1. Measurement = Reading Level + Correct Factor,
Correct Factor = Antenna Factor + Loss (Cable + Filter) – Amplifier Gain.
2. If Peak Result complies with AV limit, AV Result is deemed to comply with AV limit.
3. Peak detector: RBW: 1 MHz, VBW: 3 MHz.
4. Average detector: RBW: 1 MHz, VBW: 1/T MHz(refer to clause 7.1.).
5. For above 3GHz part, filter losses were only considered in the spurious frequency bands and the authorized band was not corrected for HPF losses.
6. Only the worst case emission was recorded, if it complies with the limit, the other emissions deemed to comply with the limit.

Test Mode	Channel	Polarization	Verdict
11N HT40	MCH	Horizontal	PASS


PK Result:

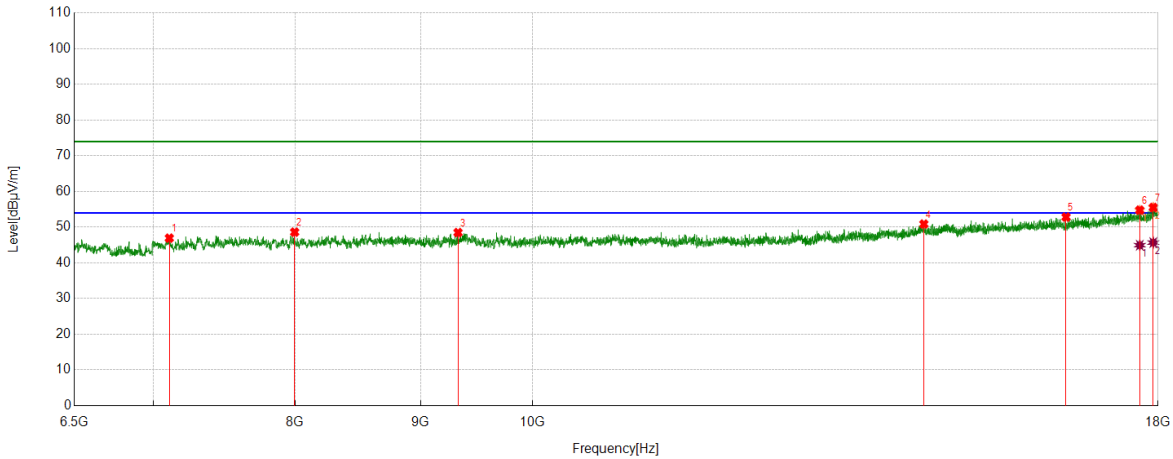
No.	Frequency	Reading Level	Correct Factor	Result	Limit	Margin	Remark
	[MHz]	[dBuV]	[dB/m]	[dBuV/m]	[dBuV/m]	[dB]	
1	7538.0048	43.82	4.54	48.36	74.00	-25.64	Horizontal
2	7983.6855	42.91	5.45	48.36	74.00	-25.64	Horizontal
3	9348.0435	42.69	6.43	49.12	74.00	-24.88	Horizontal
4	14437.4297	37.90	12.87	50.77	74.00	-23.23	Horizontal
5	16624.1405	37.25	15.85	53.10	74.00	-20.90	Horizontal
6	17593.1366	36.94	18.04	54.98	74.00	-19.02	Horizontal
7	17887.8610	35.21	19.28	54.49	74.00	-19.51	Horizontal

AV Result:

No.	Frequency	Reading Level	Correct Factor	Result	Limit	Margin	Remark
	[MHz]	[dBuV]	[dB/m]	[dBuV/m]	[dBuV/m]	[dB]	
1	17593.1366	27.08	18.04	45.12	54.00	-8.88	Horizontal
2	17887.8610	26.45	19.28	45.73	54.00	-8.27	Horizontal

- Note: 1. Measurement = Reading Level + Correct Factor,
 Correct Factor = Antenna Factor + Loss (Cable + Filter) – Amplifier Gain.
- If Peak Result complies with AV limit, AV Result is deemed to comply with AV limit.
 - Peak detector: RBW: 1 MHz, VBW: 3 MHz.
 - Average detector: RBW: 1 MHz, VBW: 1/T MHz(refer to clause 7.1.).
 - For above 3GHz part, filter losses were only considered in the spurious frequency bands and the authorized band was not corrected for HPF losses.
 - Only the worst case emission was recorded, if it complies with the limit, the other emissions deemed to comply with the limit.

Test Mode	Channel	Polarization	Verdict
11N HT40	MCH	Vertical	PASS



PK Result:

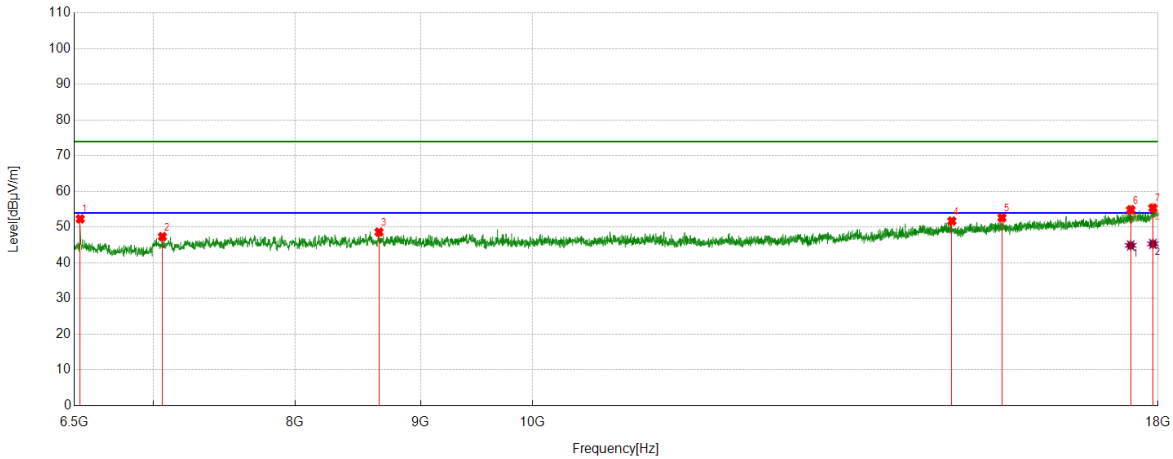
No.	Frequency	Reading Level	Correct Factor	Result	Limit	Margin	Remark
	[MHz]	[dBuV]	[dB/m]	[dBuV/m]	[dBuV/m]	[dB]	
1	7108.1385	43.04	3.89	46.93	74.00	-27.07	Vertical
2	7996.6246	43.22	5.39	48.61	74.00	-25.39	Vertical
3	9323.6030	42.17	6.32	48.49	74.00	-25.51	Vertical
4	14444.6181	37.98	12.89	50.87	74.00	-23.13	Vertical
5	16509.1261	36.88	15.94	52.82	74.00	-21.18	Vertical
6	17693.7742	36.56	18.21	54.77	74.00	-19.23	Vertical
7	17919.4899	36.16	19.36	55.52	74.00	-18.48	Vertical

AV Result:

No.	Frequency	Reading Level	Correct Factor	Result	Limit	Margin	Remark
	[MHz]	[dBuV]	[dB/m]	[dBuV/m]	[dBuV/m]	[dB]	
1	17693.7742	26.74	18.21	44.95	54.00	-9.05	Vertical
2	17919.4899	26.32	19.36	45.68	54.00	-8.32	Vertical

- Note: 1. Measurement = Reading Level + Correct Factor,
Correct Factor = Antenna Factor + Loss (Cable + Filter) – Amplifier Gain.
- If Peak Result complies with AV limit, AV Result is deemed to comply with AV limit.
 - Peak detector: RBW: 1 MHz, VBW: 3 MHz.
 - Average detector: RBW: 1 MHz, VBW: 1/T MHz(refer to clause 7.1.).
 - For above 3GHz part, filter losses were only considered in the spurious frequency bands and the authorized band was not corrected for HPF losses.
 - Only the worst case emission was recorded, if it complies with the limit, the other emissions deemed to comply with the limit.

Test Mode	Channel	Polarization	Verdict
11N HT40	HCH	Horizontal	PASS



PK Result:

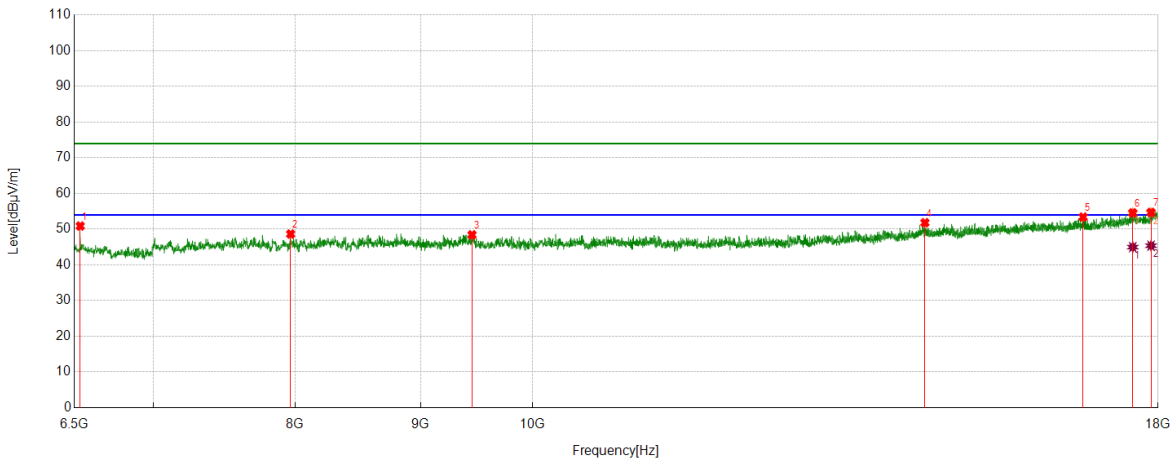
No.	Frequency	Reading Level	Correct Factor	Result	Limit	Margin	Remark
	[MHz]	[dBuV]	[dB/m]	[dBuV/m]	[dBuV/m]	[dB]	
1	6537.3797	49.08	3.25	52.33	74.00	-21.67	Horizontal
2	7062.1328	43.56	3.79	47.35	74.00	-26.65	Horizontal
3	8656.5196	42.29	6.34	48.63	74.00	-25.37	Horizontal
4	14829.9162	38.84	12.88	51.72	74.00	-22.28	Horizontal
5	15544.4431	38.86	13.78	52.64	74.00	-21.36	Horizontal
6	17544.2555	37.17	17.71	54.88	74.00	-19.12	Horizontal
7	17913.7392	36.09	19.29	55.38	74.00	-18.62	Horizontal

AV Result:

No.	Frequency	Reading Level	Correct Factor	Result	Limit	Margin	Remark
	[MHz]	[dBuV]	[dB/m]	[dBuV/m]	[dBuV/m]	[dB]	
1	17544.2555	27.18	17.71	44.89	54.00	-9.11	Horizontal
2	17913.7392	26.03	19.29	45.32	54.00	-8.68	Horizontal

- Note: 1. Measurement = Reading Level + Correct Factor,
Correct Factor = Antenna Factor + Loss (Cable + Filter) – Amplifier Gain.
- If Peak Result complies with AV limit, AV Result is deemed to comply with AV limit.
 - Peak detector: RBW: 1 MHz, VBW: 3 MHz.
 - Average detector: RBW: 1 MHz, VBW: 1/T MHz(refer to clause 7.1.).
 - For above 3GHz part, filter losses were only considered in the spurious frequency bands and the authorized band was not corrected for HPF losses.
 - Only the worst case emission was recorded, if it complies with the limit, the other emissions deemed to comply with the limit.

Test Mode	Channel	Polarization	Verdict
11N HT40	HCH	Vertical	PASS



PK Result:

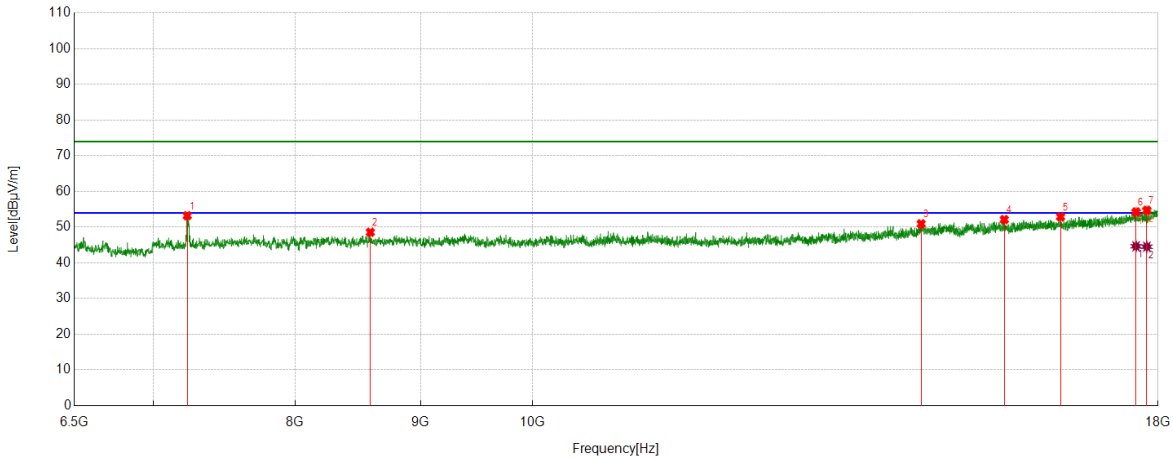
No.	Frequency	Reading Level	Correct Factor	Result	Limit	Margin	Remark
	[MHz]	[dBuV]	[dB/m]	[dBuV/m]	[dBuV/m]	[dB]	
1	6537.3797	47.64	3.25	50.89	74.00	-23.11	Vertical
2	7966.4333	43.06	5.59	48.65	74.00	-25.35	Vertical
3	9447.2434	41.81	6.60	48.41	74.00	-25.59	Vertical
4	14458.9949	38.98	12.83	51.81	74.00	-22.19	Vertical
5	16776.5346	37.19	16.21	53.40	74.00	-20.60	Vertical
6	17577.3222	36.65	17.93	54.58	74.00	-19.42	Vertical
7	17882.1103	35.49	19.21	54.70	74.00	-19.30	Vertical

AV Result:

No.	Frequency	Reading Level	Correct Factor	Result	Limit	Margin	Remark
	[MHz]	[dBuV]	[dB/m]	[dBuV/m]	[dBuV/m]	[dB]	
1	17577.3222	27.05	17.93	44.98	54.00	-9.02	Vertical
2	17882.1103	26.17	19.21	45.38	54.00	-8.62	Vertical

- Note: 1. Measurement = Reading Level + Correct Factor,
Correct Factor = Antenna Factor + Loss (Cable + Filter) – Amplifier Gain.
- If Peak Result complies with AV limit, AV Result is deemed to comply with AV limit.
 - Peak detector: RBW: 1 MHz, VBW: 3 MHz.
 - Average detector: RBW: 1 MHz, VBW: 1/T MHz(refer to clause 7.1.).
 - For above 3GHz part, filter losses were only considered in the spurious frequency bands and the authorized band was not corrected for HPF losses.
 - Only the worst case emission was recorded, if it complies with the limit, the other emissions deemed to comply with the limit.

Test Mode	Channel	Polarization	Verdict
11AX HE20	LCH	Horizontal	PASS



PK Result:

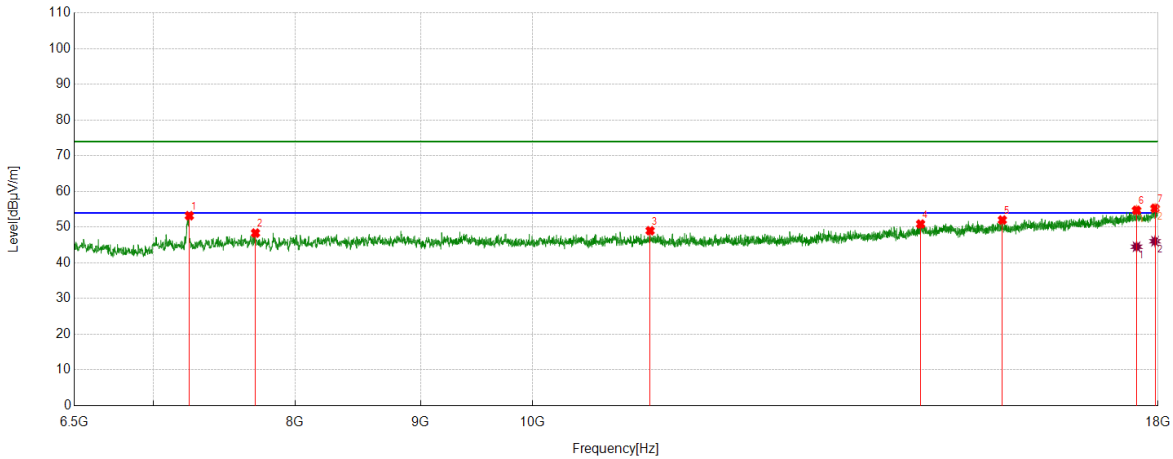
No.	Frequency	Reading Level	Correct Factor	Result	Limit	Margin	Remark
	[MHz]	[dBuV]	[dB/m]	[dBuV/m]	[dBuV/m]	[dB]	
1	7228.9036	49.32	3.90	53.22	74.00	-20.78	Horizontal
2	8586.0733	42.45	6.12	48.57	74.00	-25.43	Horizontal
3	14407.2384	38.09	12.85	50.94	74.00	-23.06	Horizontal
4	15578.9474	38.44	13.68	52.12	74.00	-21.88	Horizontal
5	16424.3030	37.64	15.28	52.92	74.00	-21.08	Horizontal
6	17631.9540	36.22	18.04	54.26	74.00	-19.74	Horizontal
7	17811.6640	35.80	18.93	54.73	74.00	-19.27	Horizontal

AV Result:

No.	Frequency	Reading Level	Correct Factor	Result	Limit	Margin	Remark
	[MHz]	[dBuV]	[dB/m]	[dBuV/m]	[dBuV/m]	[dB]	
1	17631.9540	26.61	18.04	44.65	54.00	-9.35	Horizontal
2	17811.6640	25.59	18.93	44.52	54.00	-9.48	Horizontal

- Note: 1. Measurement = Reading Level + Correct Factor,
Correct Factor = Antenna Factor + Loss (Cable + Filter) – Amplifier Gain.
- If Peak Result complies with AV limit, AV Result is deemed to comply with AV limit.
 - Peak detector: RBW: 1 MHz, VBW: 3 MHz.
 - Average detector: RBW: 1 MHz, VBW: 1/T MHz(refer to clause 7.1.).
 - For above 3GHz part, filter losses were only considered in the spurious frequency bands and the authorized band was not corrected for HPF losses.
 - Only the worst case emission was recorded, if it complies with the limit, the other emissions deemed to comply with the limit.

Test Mode	Channel	Polarization	Verdict
11AX HE20	LCH	Vertical	PASS



PK Result:

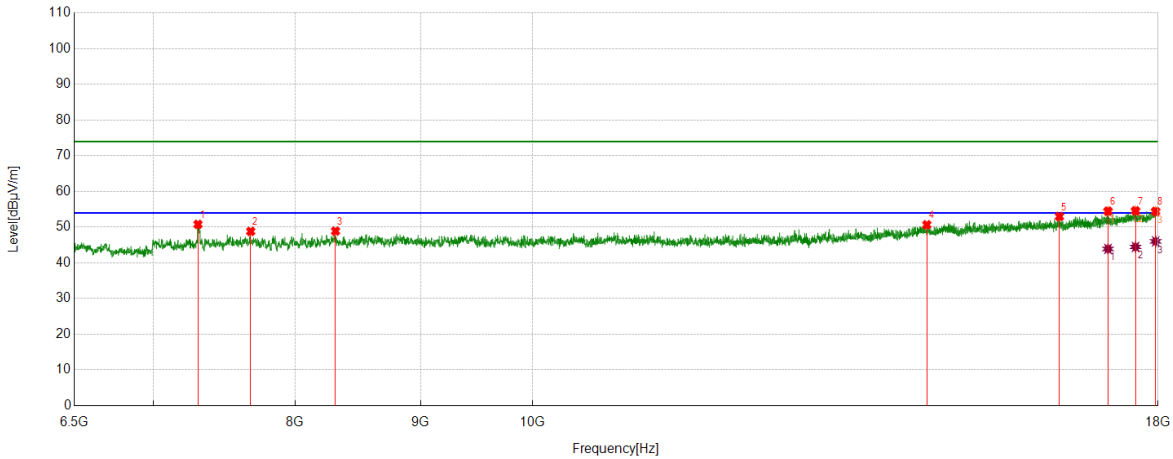
No.	Frequency	Reading Level	Correct Factor	Result	Limit	Margin	Remark
	[MHz]	[dBuV]	[dB/m]	[dBuV/m]	[dBuV/m]	[dB]	
1	7243.2804	49.40	3.81	53.21	74.00	-20.79	Vertical
2	7707.6510	43.08	5.27	48.35	74.00	-25.65	Vertical
3	11168.1460	41.74	7.27	49.01	74.00	-24.99	Vertical
4	14400.0500	38.15	12.73	50.88	74.00	-23.12	Vertical
5	15550.1938	38.26	13.75	52.01	74.00	-21.99	Vertical
6	17640.5801	36.73	18.00	54.73	74.00	-19.27	Vertical
7	17949.6812	35.80	19.49	55.29	74.00	-18.71	Vertical

AV Result:

No.	Frequency	Reading Level	Correct Factor	Result	Limit	Margin	Remark
	[MHz]	[dBuV]	[dB/m]	[dBuV/m]	[dBuV/m]	[dB]	
1	17640.5801	26.52	18.00	44.52	54.00	-9.48	Vertical
2	17949.6812	26.57	19.49	46.06	54.00	-7.94	Vertical

- Note: 1. Measurement = Reading Level + Correct Factor,
Correct Factor = Antenna Factor + Loss (Cable + Filter) – Amplifier Gain.
- If Peak Result complies with AV limit, AV Result is deemed to comply with AV limit.
 - Peak detector: RBW: 1 MHz, VBW: 3 MHz.
 - Average detector: RBW: 1 MHz, VBW: 1/T MHz(refer to clause 7.1.).
 - For above 3GHz part, filter losses were only considered in the spurious frequency bands and the authorized band was not corrected for HPF losses.
 - Only the worst case emission was recorded, if it complies with the limit, the other emissions deemed to comply with the limit.

Test Mode	Channel	Polarization	Verdict
11AX HE20	MCH	Horizontal	PASS



PK Result:

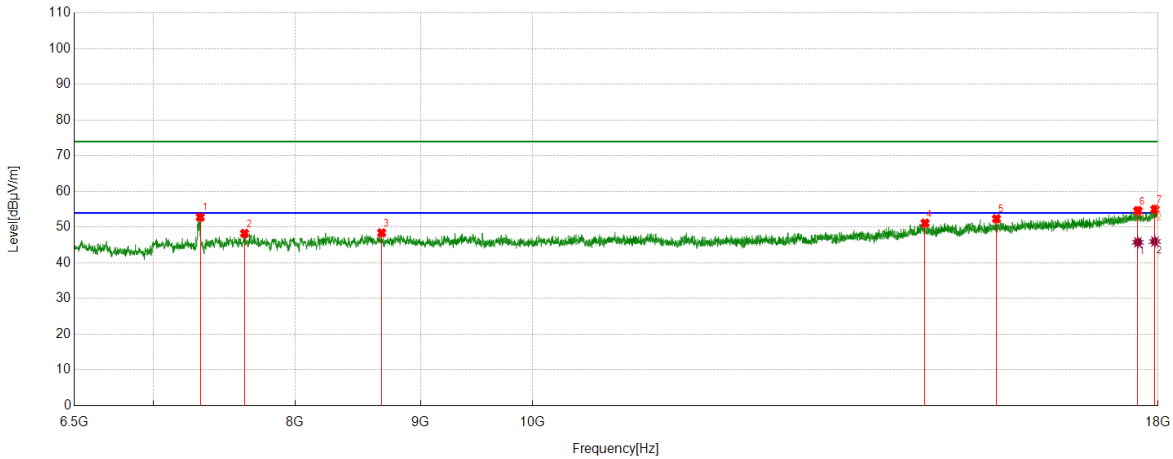
No.	Frequency	Reading Level	Correct Factor	Result	Limit	Margin	Remark
	[MHz]	[dBuV]	[dB/m]	[dBuV/m]	[dBuV/m]	[dB]	
1	7302.2253	47.07	3.72	50.79	74.00	-23.21	Horizontal
2	7673.1466	43.58	5.25	48.83	74.00	-25.17	Horizontal
3	8310.0388	42.57	6.34	48.91	74.00	-25.09	Horizontal
4	14484.8731	37.83	12.84	50.67	74.00	-23.33	Horizontal
5	16407.0509	37.94	15.06	53.00	74.00	-21.00	Horizontal
6	17173.3342	37.99	16.50	54.49	74.00	-19.51	Horizontal
7	17623.3279	36.53	18.06	54.59	74.00	-19.41	Horizontal
8	17959.7450	34.80	19.63	54.43	74.00	-19.57	Horizontal

AV Result:

No.	Frequency	Reading Level	Correct Factor	Result	Limit	Margin	Remark
	[MHz]	[dBuV]	[dB/m]	[dBuV/m]	[dBuV/m]	[dB]	
1	17173.3342	27.41	16.50	43.91	54.00	-10.09	Horizontal
2	17623.3279	26.41	18.06	44.47	54.00	-9.53	Horizontal
3	17959.7450	26.39	19.63	46.02	54.00	-7.98	Horizontal

- Note: 1. Measurement = Reading Level + Correct Factor,
Correct Factor = Antenna Factor + Loss (Cable + Filter) – Amplifier Gain.
- If Peak Result complies with AV limit, AV Result is deemed to comply with AV limit.
 - Peak detector: RBW: 1 MHz, VBW: 3 MHz.
 - Average detector: RBW: 1 MHz, VBW: 1/T MHz(refer to clause 7.1.).
 - For above 3GHz part, filter losses were only considered in the spurious frequency bands and the authorized band was not corrected for HPF losses.
 - Only the worst case emission was recorded, if it complies with the limit, the other emissions deemed to comply with the limit.

Test Mode	Channel	Polarization	Verdict
11AX HE20	MCH	Vertical	PASS



PK Result:

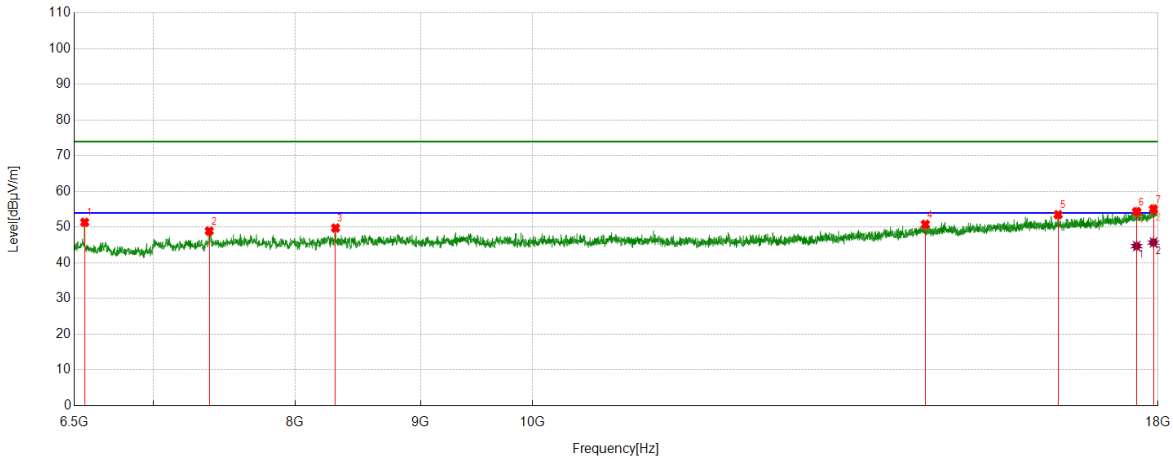
No.	Frequency	Reading Level	Correct Factor	Result	Limit	Margin	Remark
	[MHz]	[dBuV]	[dB/m]	[dBuV/m]	[dBuV/m]	[dB]	
1	7318.0398	49.01	3.81	52.82	74.00	-21.18	Vertical
2	7628.5786	43.08	5.17	48.25	74.00	-25.75	Vertical
3	8678.0848	42.29	6.11	48.40	74.00	-25.60	Vertical
4	14460.4326	38.31	12.82	51.13	74.00	-22.87	Vertical
5	15463.9330	38.37	13.98	52.35	74.00	-21.65	Vertical
6	17662.1453	36.57	18.07	54.64	74.00	-19.36	Vertical
7	17948.2435	35.54	19.48	55.02	74.00	-18.98	Vertical

AV Result:

No.	Frequency	Reading Level	Correct Factor	Result	Limit	Margin	Remark
	[MHz]	[dBuV]	[dB/m]	[dBuV/m]	[dBuV/m]	[dB]	
1	17662.1453	27.69	18.07	45.76	54.00	-8.24	Vertical
2	17948.2435	26.51	19.48	45.99	54.00	-8.01	Vertical

- Note: 1. Measurement = Reading Level + Correct Factor,
Correct Factor = Antenna Factor + Loss (Cable + Filter) – Amplifier Gain.
- If Peak Result complies with AV limit, AV Result is deemed to comply with AV limit.
 - Peak detector: RBW: 1 MHz, VBW: 3 MHz.
 - Average detector: RBW: 1 MHz, VBW: 1/T MHz(refer to clause 7.1.).
 - For above 3GHz part, filter losses were only considered in the spurious frequency bands and the authorized band was not corrected for HPF losses.
 - Only the worst case emission was recorded, if it complies with the limit, the other emissions deemed to comply with the limit.

Test Mode	Channel	Polarization	Verdict
11AX HE20	HCH	Horizontal	PASS



PK Result:

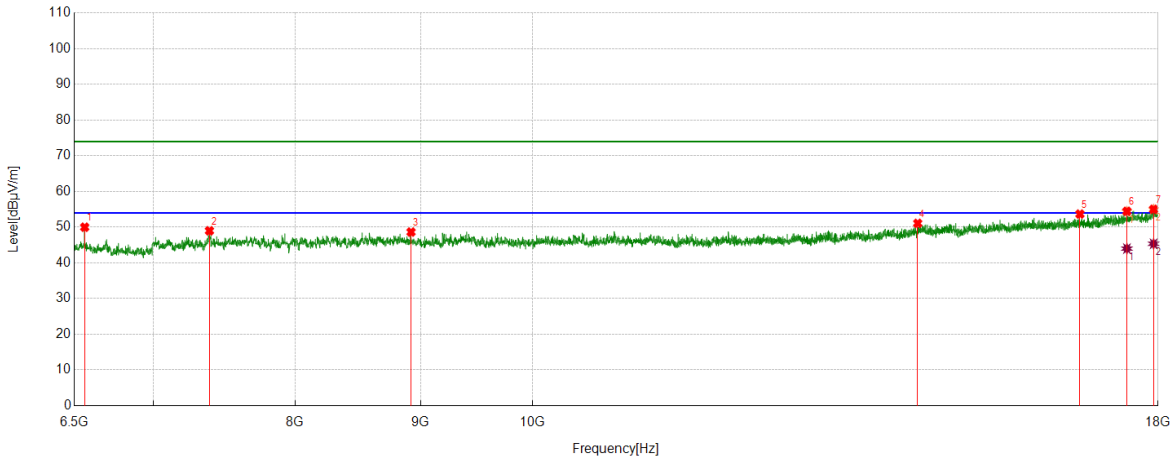
No.	Frequency	Reading Level	Correct Factor	Result	Limit	Margin	Remark
	[MHz]	[dBuV]	[dB/m]	[dBuV/m]	[dBuV/m]	[dB]	
1	6564.6956	48.00	3.37	51.37	74.00	-22.63	Horizontal
2	7379.8600	44.75	4.18	48.93	74.00	-25.07	Horizontal
3	8310.0388	43.42	6.34	49.76	74.00	-24.24	Horizontal
4	14464.7456	37.97	12.83	50.80	74.00	-23.20	Horizontal
5	16386.9234	38.49	15.01	53.50	74.00	-20.50	Horizontal
6	17642.0178	36.36	18.00	54.36	74.00	-19.64	Horizontal
7	17923.8030	35.73	19.36	55.09	74.00	-18.91	Horizontal

AV Result:

No.	Frequency	Reading Level	Correct Factor	Result	Limit	Margin	Remark
	[MHz]	[dBuV]	[dB/m]	[dBuV/m]	[dBuV/m]	[dB]	
1	17642.0178	26.70	18.00	44.70	54.00	-9.30	Horizontal
2	17923.8030	26.34	19.36	45.70	54.00	-8.30	Horizontal

- Note: 1. Measurement = Reading Level + Correct Factor,
Correct Factor = Antenna Factor + Loss (Cable + Filter) – Amplifier Gain.
- If Peak Result complies with AV limit, AV Result is deemed to comply with AV limit.
 - Peak detector: RBW: 1 MHz, VBW: 3 MHz.
 - Average detector: RBW: 1 MHz, VBW: 1/T MHz(refer to clause 7.1.).
 - For above 3GHz part, filter losses were only considered in the spurious frequency bands and the authorized band was not corrected for HPF losses.
 - Only the worst case emission was recorded, if it complies with the limit, the other emissions deemed to comply with the limit.

Test Mode	Channel	Polarization	Verdict
11AX HE20	HCH	Vertical	PASS



PK Result:

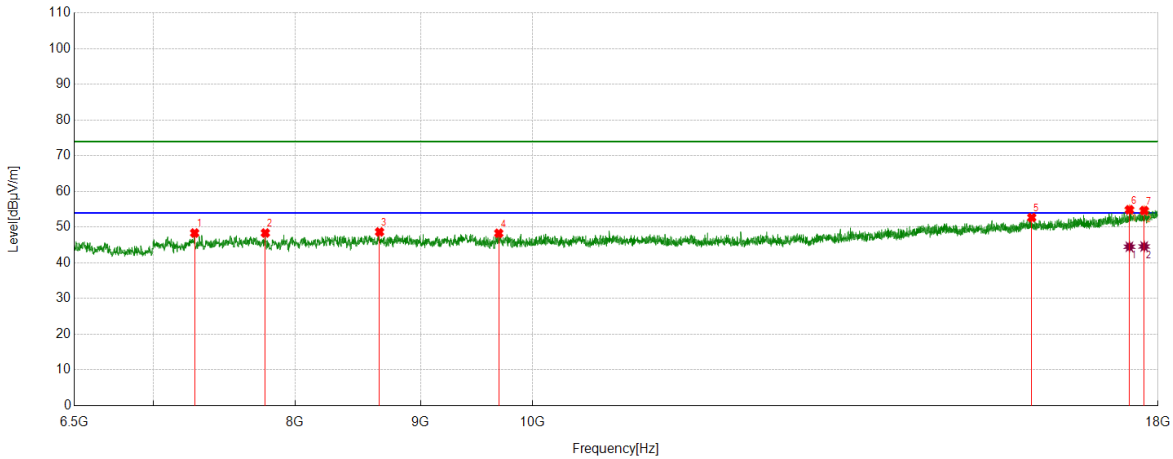
No.	Frequency	Reading Level	Correct Factor	Result	Limit	Margin	Remark
	[MHz]	[dBuV]	[dB/m]	[dBuV/m]	[dBuV/m]	[dB]	
1	6564.6956	46.62	3.37	49.99	74.00	-24.01	Vertical
2	7381.2977	44.82	4.17	48.99	74.00	-25.01	Vertical
3	8921.0526	42.40	6.24	48.64	74.00	-25.36	Vertical
4	14361.2327	38.42	12.66	51.08	74.00	-22.92	Vertical
5	16726.2158	37.45	16.22	53.67	74.00	-20.33	Vertical
6	17480.9976	36.80	17.65	54.45	74.00	-19.55	Vertical
7	17925.2407	35.64	19.37	55.01	74.00	-18.99	Vertical

AV Result:

No.	Frequency	Reading Level	Correct Factor	Result	Limit	Margin	Remark
	[MHz]	[dBuV]	[dB/m]	[dBuV/m]	[dBuV/m]	[dB]	
1	17480.9976	26.35	17.65	44.00	54.00	-10.00	Vertical
2	17925.2407	25.98	19.37	45.35	54.00	-8.65	Vertical

- Note: 1. Measurement = Reading Level + Correct Factor,
Correct Factor = Antenna Factor + Loss (Cable + Filter) – Amplifier Gain.
- If Peak Result complies with AV limit, AV Result is deemed to comply with AV limit.
 - Peak detector: RBW: 1 MHz, VBW: 3 MHz.
 - Average detector: RBW: 1 MHz, VBW: 1/T MHz(refer to clause 7.1.).
 - For above 3GHz part, filter losses were only considered in the spurious frequency bands and the authorized band was not corrected for HPF losses.
 - Only the worst case emission was recorded, if it complies with the limit, the other emissions deemed to comply with the limit.

Test Mode	Channel	Polarization	Verdict
11AX HE40	LCH	Horizontal	PASS



PK Result:

No.	Frequency	Reading Level	Correct Factor	Result	Limit	Margin	Remark
	[MHz]	[dBuV]	[dB/m]	[dBuV/m]	[dBuV/m]	[dB]	
1	7279.2224	44.37	3.99	48.36	74.00	-25.64	Horizontal
2	7779.5349	43.31	5.06	48.37	74.00	-25.63	Horizontal
3	8660.8326	42.24	6.43	48.67	74.00	-25.33	Horizontal
4	9687.3359	41.78	6.51	48.29	74.00	-25.71	Horizontal
5	15985.8107	38.13	14.56	52.69	74.00	-21.31	Horizontal
6	17522.6903	37.27	17.61	54.88	74.00	-19.12	Horizontal
7	17767.0959	36.06	18.60	54.66	74.00	-19.34	Horizontal

AV Result:

No.	Frequency	Reading Level	Correct Factor	Result	Limit	Margin	Remark
	[MHz]	[dBuV]	[dB/m]	[dBuV/m]	[dBuV/m]	[dB]	
1	17522.6903	26.91	17.61	44.52	54.00	-9.48	Horizontal
2	17767.0959	25.99	18.60	44.59	54.00	-9.41	Horizontal

- Note: 1. Measurement = Reading Level + Correct Factor,
Correct Factor = Antenna Factor + Loss (Cable + Filter) – Amplifier Gain.
- If Peak Result complies with AV limit, AV Result is deemed to comply with AV limit.
 - Peak detector: RBW: 1 MHz, VBW: 3 MHz.
 - Average detector: RBW: 1 MHz, VBW: 1/T MHz(refer to clause 7.1.).
 - For above 3GHz part, filter losses were only considered in the spurious frequency bands and the authorized band was not corrected for HPF losses.
 - Only the worst case emission was recorded, if it complies with the limit, the other emissions deemed to comply with the limit.