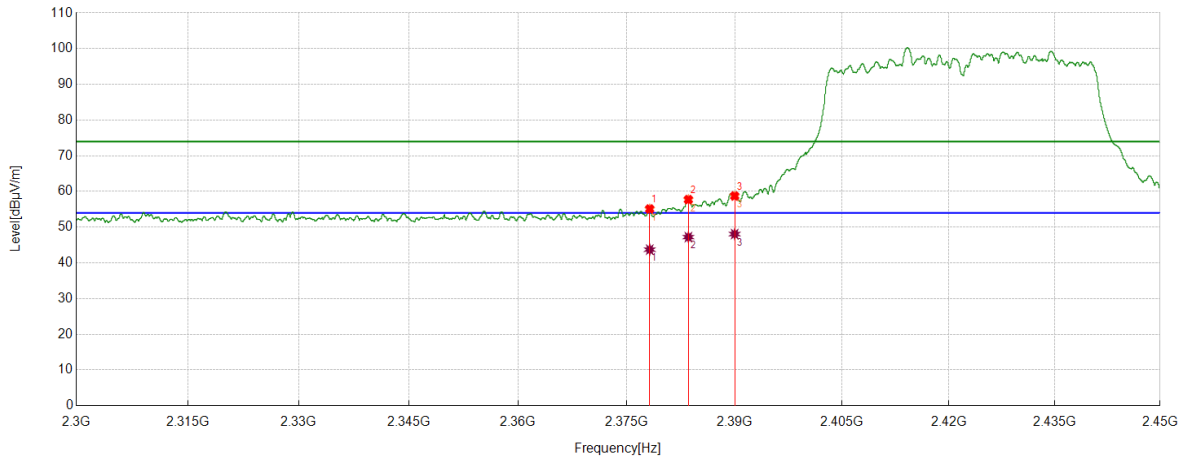


Test Mode	Channel	Polarization	Verdict
11AX HE40	LCH	Vertical	PASS



PK Result:

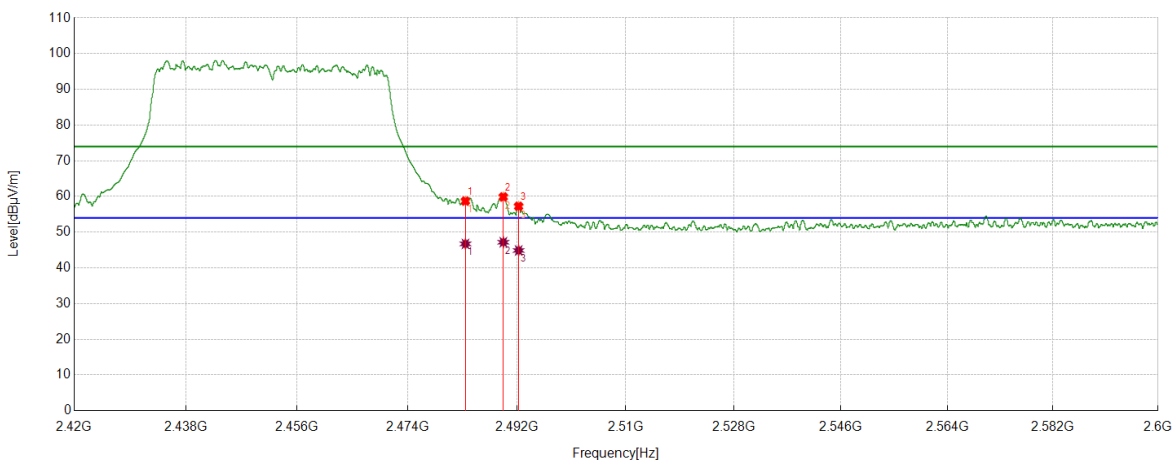
No.	Frequency	Reading Level	Correct Factor	Result	Limit	Margin	Remark
	[MHz]	[dBuV]	[dB/m]	[dBuV/m]	[dBuV/m]	[dB]	
1	2378.1973	41.44	13.59	55.03	74.00	-18.97	Vertical
2	2383.5604	44.14	13.55	57.69	74.00	-16.31	Vertical
3	2390.0000	45.21	13.48	58.69	74.00	-15.31	Vertical

AV Result:

No.	Frequency	Reading Level	Correct Factor	Result	Limit	Margin	Remark
	[MHz]	[dBuV]	[dB/m]	[dBuV/m]	[dBuV/m]	[dB]	
1	2378.1973	30.12	13.59	43.71	54.00	-10.29	Vertical
2	2383.5604	33.67	13.55	47.22	54.00	-6.78	Vertical
3	2390.0000	34.59	13.48	48.07	54.00	-5.93	Vertical

- Note: 1. Peak detector: RBW: 1 MHz, VBW: 3 MHz.
 2. Average detector: RBW: 1 MHz, VBW: 1/T MHz(refer to clause 7.1.).
 3. Measurement = Reading Level + Correct Factor,
 Correct Factor = Antenna Factor + Loss (Cable + Attenuator) – Amplifier Gain.
 4. Only the worst case emission was recorded, if it complies with the limit, the other emissions deemed to comply with the limit.

Test Mode	Channel	Polarization	Verdict
11AX HE40	HCH	Horizontal	PASS



PK Result:

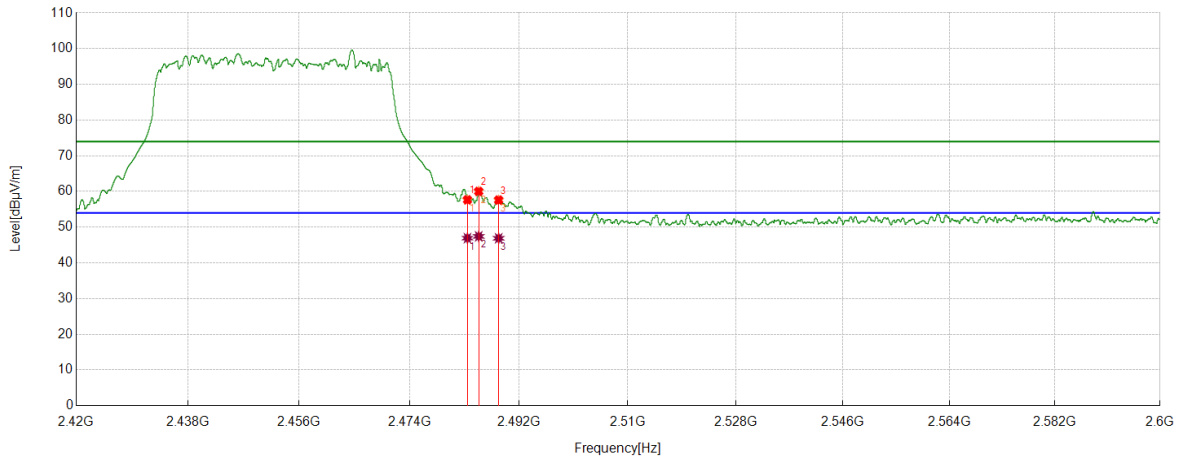
No.	Frequency	Reading Level	Correct Factor	Result	Limit	Margin	Remark
	[MHz]	[dBuV]	[dB/m]	[dBuV/m]	[dBuV/m]	[dB]	
1	2483.5000	44.39	14.25	58.64	74.00	-15.36	Horizontal
2	2489.7362	45.43	14.37	59.80	74.00	-14.20	Horizontal
3	2492.2565	42.87	14.35	57.22	74.00	-16.78	Horizontal

AV Result:

No.	Frequency	Reading Level	Correct Factor	Result	Limit	Margin	Remark
	[MHz]	[dBuV]	[dB/m]	[dBuV/m]	[dBuV/m]	[dB]	
1	2483.5000	32.47	14.25	46.72	54.00	-7.28	Horizontal
2	2489.7362	32.81	14.37	47.18	54.00	-6.82	Horizontal
3	2492.2565	30.53	14.35	44.88	54.00	-9.12	Horizontal

- Note: 1. Peak detector: RBW: 1 MHz, VBW: 3 MHz.
 2. Average detector: RBW: 1 MHz, VBW: 1/T MHz(refer to clause 7.1.).
 3. Measurement = Reading Level + Correct Factor,
 Correct Factor = Antenna Factor + Loss (Cable + Attenuator) – Amplifier Gain.
 4. Only the worst case emission was recorded, if it complies with the limit, the other emissions deemed to comply with the limit.

Test Mode	Channel	Polarization	Verdict
11AX HE40	HCH	Vertical	PASS



PK Result:

No.	Frequency	Reading Level	Correct Factor	Result	Limit	Margin	Remark
	[MHz]	[dBuV]	[dB/m]	[dBuV/m]	[dBuV/m]	[dB]	
1	2483.5000	43.35	14.25	57.60	74.00	-16.40	Vertical
2	2485.3482	45.72	14.28	60.00	74.00	-14.00	Vertical
3	2488.6336	43.18	14.34	57.52	74.00	-16.48	Vertical

AV Result:

No.	Frequency	Reading Level	Correct Factor	Result	Limit	Margin	Remark
	[MHz]	[dBuV]	[dB/m]	[dBuV/m]	[dBuV/m]	[dB]	
1	2483.5000	32.68	14.25	46.93	54.00	-7.07	Vertical
2	2485.3482	33.15	14.28	47.43	54.00	-6.57	Vertical
3	2488.6336	32.55	14.34	46.89	54.00	-7.11	Vertical

- Note: 1. Peak detector: RBW: 1 MHz, VBW: 3 MHz.
 2. Average detector: RBW: 1 MHz, VBW: 1/T MHz(refer to clause 7.1.).
 3. Measurement = Reading Level + Correct Factor,
 Correct Factor = Antenna Factor + Loss (Cable + Attenuator) – Amplifier Gain.
 4. Only the worst case emission was recorded, if it complies with the limit, the other emissions deemed to comply with the limit.

8.4. SPURIOUS EMISSIONS

TEST RESULTS TABLE

1) For 1GHz~18GHz

Test Mode	Channel	Puw(dBm)	Verdict
11B	LCH	<Limit	PASS
	MCH	<Limit	PASS
	HCH	<Limit	PASS
11G	LCH	<Limit	PASS
	MCH	<Limit	PASS
	HCH	<Limit	PASS
11N HT20	LCH	<Limit	PASS
	MCH	<Limit	PASS
	HCH	<Limit	PASS
11N HT40	LCH	<Limit	PASS
	MCH	<Limit	PASS
	HCH	<Limit	PASS
11AX HE20	LCH	<Limit	PASS
	MCH	<Limit	PASS
	HCH	<Limit	PASS
11AX HE40	LCH	<Limit	PASS
	MCH	<Limit	PASS
	HCH	<Limit	PASS

2) For 9kHz~30MHz

Test Mode	Channel	Puw(dBm)	Verdict
11B	HCH	<Limit	PASS

Remark:

1) Through pre-testing all the test modes and test channels, but only the data of the worst case is included in this test report.

3) For 30MHz~1GHz

Test Mode	Channel	Puw(dBm)	Verdict
11B	HCH	<Limit	PASS

Remark:

1) Through pre-testing all the test modes and test channels, but only the data of the worst case is included in this test report.

4) For 18GHz~26.5GHz

Test Mode	Channel	Puw(dBm)	Verdict
11B	HCH	<Limit	PASS

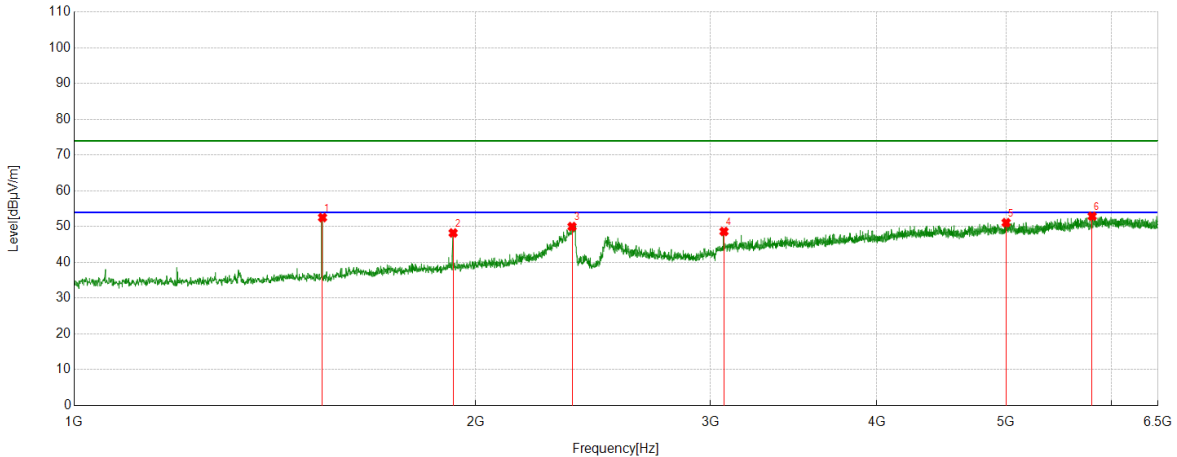
Remark:

1) Through pre-testing all the test modes and test channels, but only the data of the worst case is included in this test report.

Part 1: 1GHz~6.5GHz

HARMONICS AND SPURIOUS EMISSIONS

Test Mode	Channel	Polarization	Verdict
11B	LCH	Horizontal	PASS

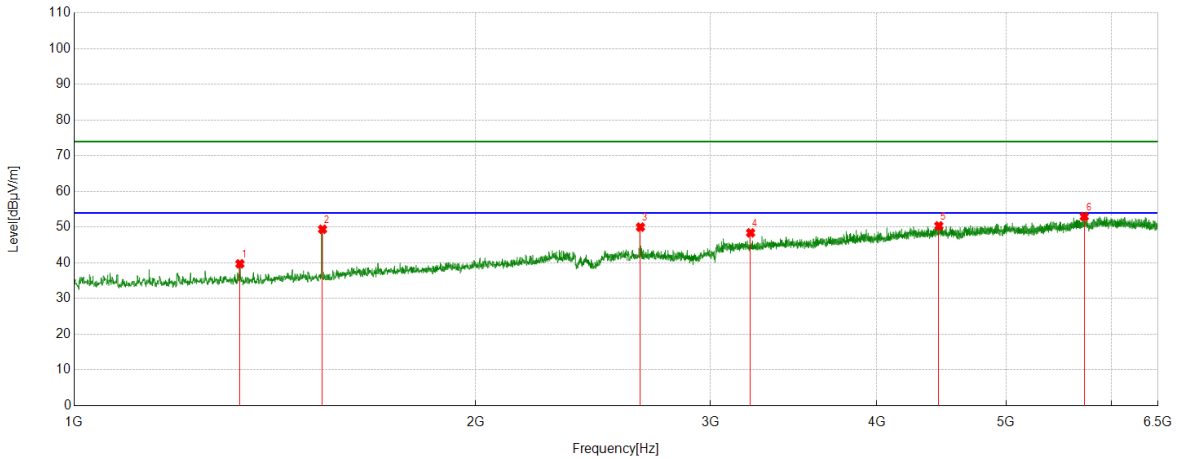


PK Result:

No.	Frequency	Reading Level	Correct Factor	Result	Limit	Margin	Remark
	[MHz]	[dBuV]	[dB/m]	[dBuV/m]	[dBuV/m]	[dB]	
1	1535.6295	53.16	-0.62	52.54	74.00	-21.46	Horizontal
2	1924.1155	45.21	3.02	48.23	74.00	-25.77	Horizontal
3	2362.7953	45.24	4.78	50.02	74.00	-23.98	Horizontal
4	3071.6965	39.38	9.27	48.65	74.00	-25.35	Horizontal
5	5000.3750	35.81	15.30	51.11	74.00	-22.89	Horizontal
6	5801.4127	35.16	17.76	52.92	74.00	-21.08	Horizontal

- Note: 1. Measurement = Reading Level + Correct Factor,
Correct Factor = Antenna Factor + Loss (Cable + Filter) – Amplifier Gain.
2. If Peak Result complies with AV limit, AV Result is deemed to comply with AV limit.
3. Test setup: RBW: 1 MHz, VBW: 3 MHz, Sweep time: auto.
4. Peak: Peak detector.
5. For below 3GHz part, filter losses were only considered in the spurious frequency bands and the authorized band was not corrected for Band Reject Filter losses.
6. Only the worst case emission was recorded, if it complies with the limit, the other emissions deemed to comply with the limit.

Test Mode	Channel	Polarization	Verdict
11B	LCH	Vertical	PASS

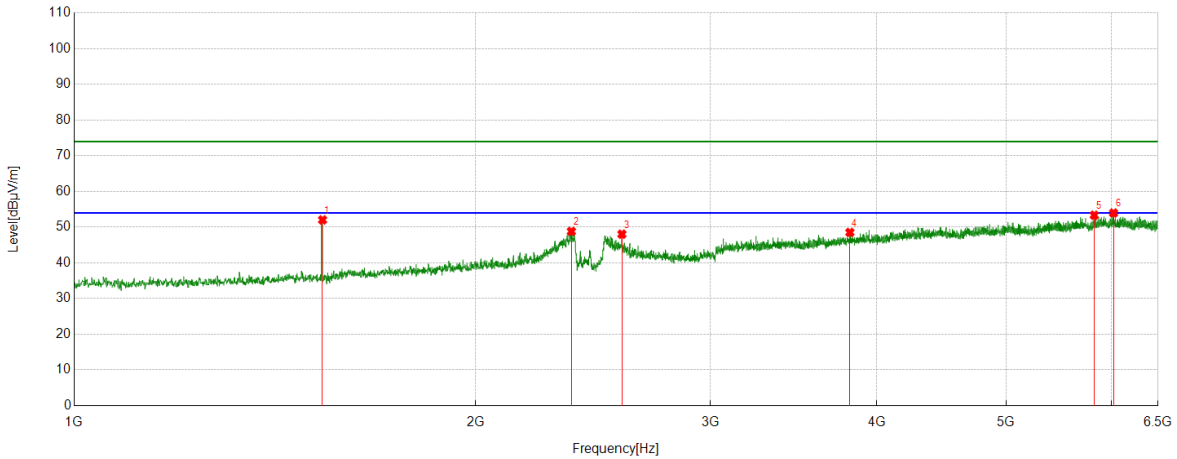


PK Result:

No.	Frequency	Reading Level	Correct Factor	Result	Limit	Margin	Remark
	[MHz]	[dBuV]	[dB/m]	[dBuV/m]	[dBuV/m]	[dB]	
1	1331.4164	40.83	-1.09	39.74	74.00	-34.26	Vertical
2	1535.6295	50.04	-0.62	49.42	74.00	-24.58	Vertical
3	2659.1449	43.95	6.07	50.02	74.00	-23.98	Vertical
4	3216.0895	38.98	9.42	48.40	74.00	-25.60	Vertical
5	4451.6815	36.01	14.36	50.37	74.00	-23.63	Vertical
6	5722.3403	35.39	17.59	52.98	74.00	-21.02	Vertical

- Note: 1. Measurement = Reading Level + Correct Factor,
Correct Factor = Antenna Factor + Loss (Cable + Filter) – Amplifier Gain.
2. If Peak Result complies with AV limit, AV Result is deemed to comply with AV limit.
3. Test setup: RBW: 1 MHz, VBW: 3 MHz, Sweep time: auto.
4. Peak: Peak detector.
5. For below 3GHz part, filter losses were only considered in the spurious frequency bands and the authorized band was not corrected for Band Reject Filter losses.
6. Only the worst case emission was recorded, if it complies with the limit, the other emissions deemed to comply with the limit.

Test Mode	Channel	Polarization	Verdict
11B	MCH	Horizontal	PASS

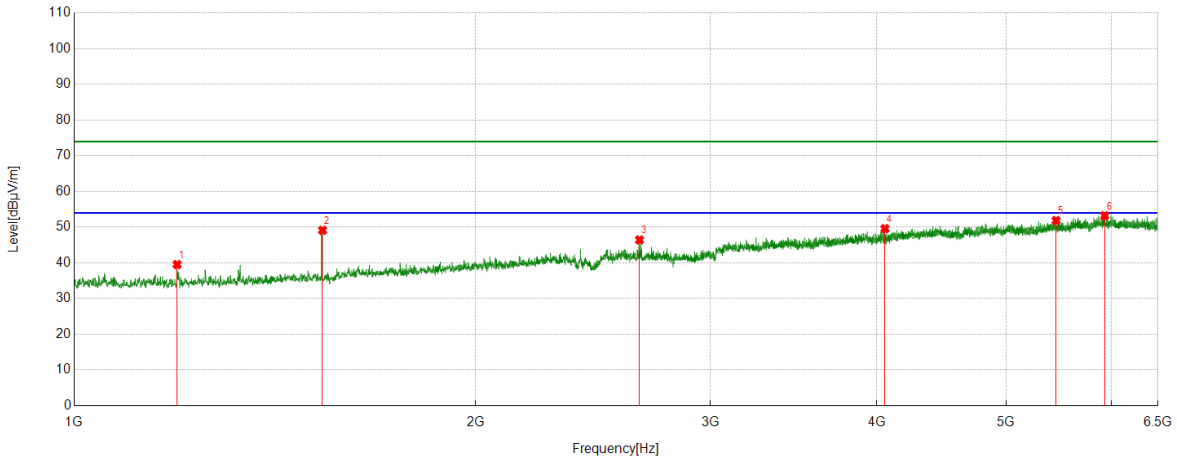


PK Result:

No.	Frequency	Reading Level	Correct Factor	Result	Limit	Margin	Remark
	[MHz]	[dBuV]	[dB/m]	[dBuV/m]	[dBuV/m]	[dB]	
1	1535.6295	52.66	-0.62	52.04	74.00	-21.96	Horizontal
2	2360.0450	44.04	4.78	48.82	74.00	-25.18	Horizontal
3	2575.2594	42.18	5.86	48.04	74.00	-25.96	Horizontal
4	3817.7272	36.27	12.25	48.52	74.00	-25.48	Horizontal
5	5822.0403	34.69	18.66	53.35	74.00	-20.65	Horizontal
6	6019.3774	36.01	17.97	53.98	74.00	-20.02	Horizontal

- Note: 1. Measurement = Reading Level + Correct Factor,
Correct Factor = Antenna Factor + Loss (Cable + Filter) – Amplifier Gain.
2. If Peak Result complies with AV limit, AV Result is deemed to comply with AV limit.
3. Test setup: RBW: 1 MHz, VBW: 3 MHz, Sweep time: auto.
4. Peak: Peak detector.
5. For below 3GHz part, filter losses were only considered in the spurious frequency bands and the authorized band was not corrected for Band Reject Filter losses.
6. Only the worst case emission was recorded, if it complies with the limit, the other emissions deemed to comply with the limit.

Test Mode	Channel	Polarization	Verdict
11B	MCH	Vertical	PASS

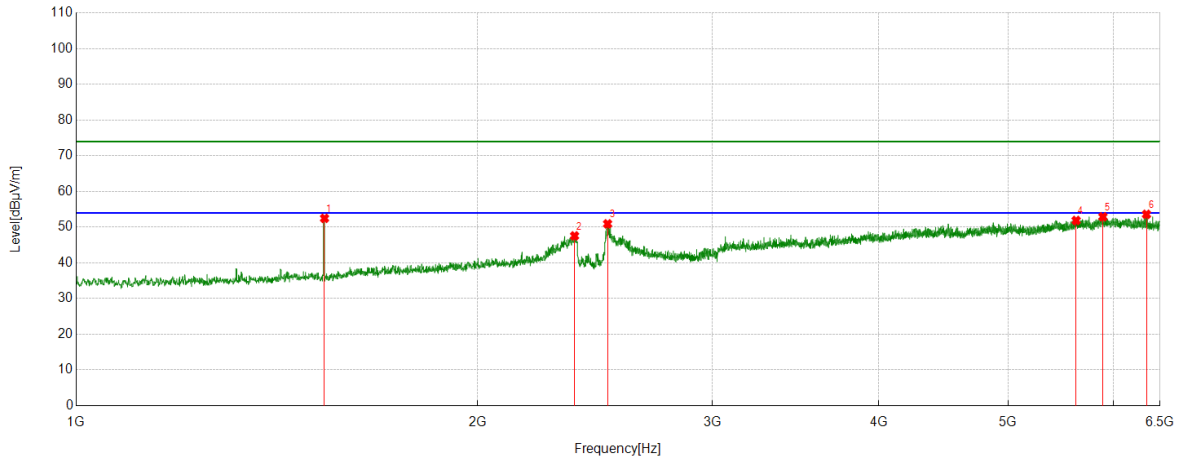


PK Result:

No.	Frequency	Reading Level	Correct Factor	Result	Limit	Margin	Remark
	[MHz]	[dBuV]	[dB/m]	[dBuV/m]	[dBuV/m]	[dB]	
1	1194.5868	41.74	-2.21	39.53	74.00	-34.47	Vertical
2	1535.6295	49.75	-0.62	49.13	74.00	-24.87	Vertical
3	2655.0194	40.20	6.24	46.44	74.00	-27.56	Vertical
4	4055.6320	37.17	12.40	49.57	74.00	-24.43	Vertical
5	5450.7438	34.26	17.60	51.86	74.00	-22.14	Vertical
6	5927.9285	34.34	18.88	53.22	74.00	-20.78	Vertical

- Note: 1. Measurement = Reading Level + Correct Factor,
Correct Factor = Antenna Factor + Loss (Cable + Filter) – Amplifier Gain.
2. If Peak Result complies with AV limit, AV Result is deemed to comply with AV limit.
3. Test setup: RBW: 1 MHz, VBW: 3 MHz, Sweep time: auto.
4. Peak: Peak detector.
5. For below 3GHz part, filter losses were only considered in the spurious frequency bands and the authorized band was not corrected for Band Reject Filter losses.
6. Only the worst case emission was recorded, if it complies with the limit, the other emissions deemed to comply with the limit.

Test Mode	Channel	Polarization	Verdict
11B	HCH	Horizontal	PASS

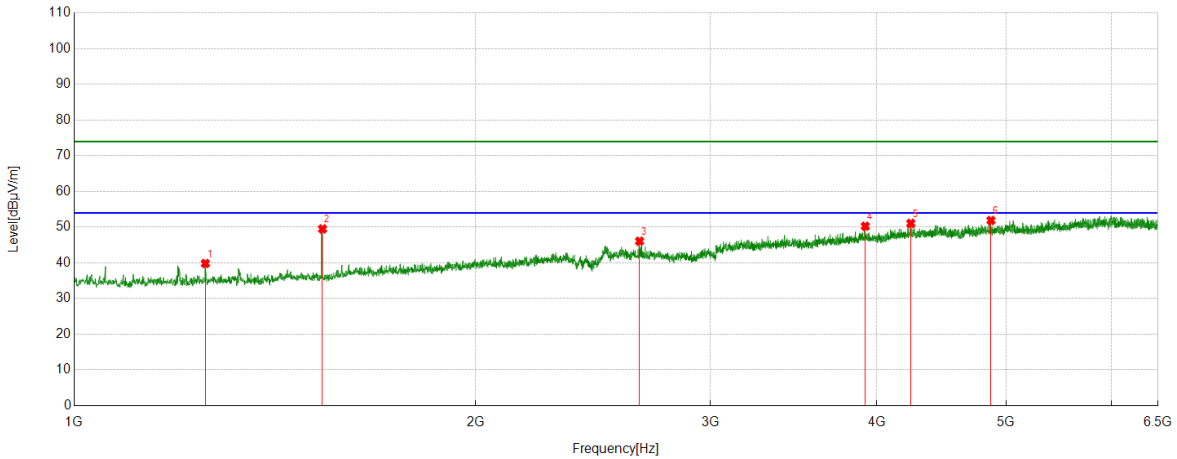


PK Result:

No.	Frequency	Reading Level	Correct Factor	Result	Limit	Margin	Remark
	[MHz]	[dBuV]	[dB/m]	[dBuV/m]	[dBuV/m]	[dB]	
1	1535.6295	53.10	-0.62	52.48	74.00	-21.52	Horizontal
2	2364.8581	42.77	4.79	47.56	74.00	-26.44	Horizontal
3	2503.7505	45.04	5.89	50.93	74.00	-23.07	Horizontal
4	5623.3279	34.39	17.48	51.87	74.00	-22.13	Horizontal
5	5889.4237	34.93	17.97	52.90	74.00	-21.10	Horizontal
6	6349.4187	34.40	19.20	53.60	74.00	-20.40	Horizontal

- Note: 1. Measurement = Reading Level + Correct Factor,
Correct Factor = Antenna Factor + Loss (Cable + Filter) – Amplifier Gain.
2. If Peak Result complies with AV limit, AV Result is deemed to comply with AV limit.
3. Test setup: RBW: 1 MHz, VBW: 3 MHz, Sweep time: auto.
4. Peak: Peak detector.
5. For below 3GHz part, filter losses were only considered in the spurious frequency bands and the authorized band was not corrected for Band Reject Filter losses.
6. Only the worst case emission was recorded, if it complies with the limit, the other emissions deemed to comply with the limit.

Test Mode	Channel	Polarization	Verdict
11B	HCH	Vertical	PASS

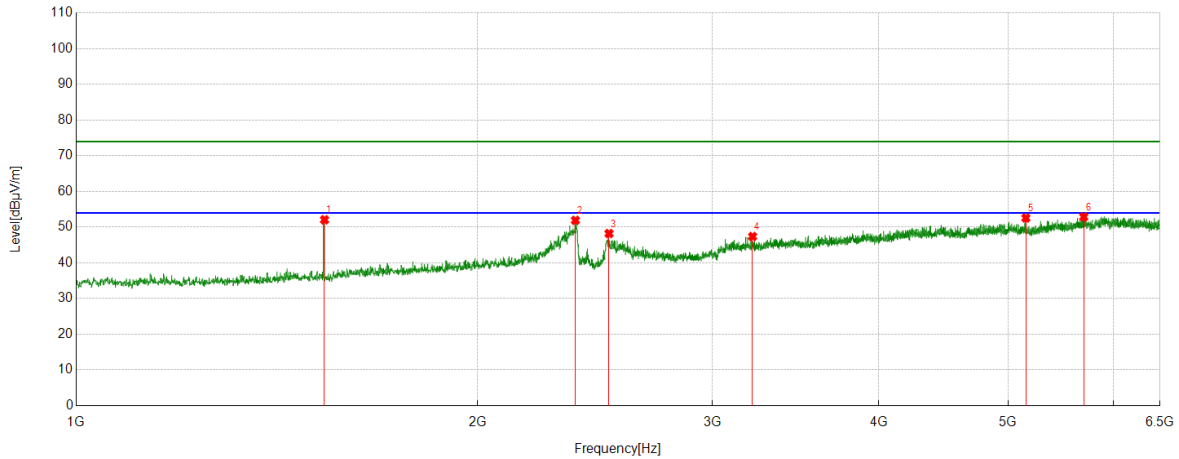


PK Result:

No.	Frequency	Reading Level	Correct Factor	Result	Limit	Margin	Remark
	[MHz]	[dBuV]	[dB/m]	[dBuV/m]	[dBuV/m]	[dB]	
1	1254.4068	41.39	-1.56	39.83	74.00	-34.17	Vertical
2	1535.6295	50.13	-0.62	49.51	74.00	-24.49	Vertical
3	2655.0194	39.84	6.24	46.08	74.00	-27.92	Vertical
4	3920.8651	37.90	12.37	50.27	74.00	-23.73	Vertical
5	4241.2802	37.14	13.95	51.09	74.00	-22.91	Vertical
6	4871.1089	36.86	15.03	51.89	74.00	-22.11	Vertical

- Note: 1. Measurement = Reading Level + Correct Factor,
Correct Factor = Antenna Factor + Loss (Cable + Filter) – Amplifier Gain.
2. If Peak Result complies with AV limit, AV Result is deemed to comply with AV limit.
3. Test setup: RBW: 1 MHz, VBW: 3 MHz, Sweep time: auto.
4. Peak: Peak detector.
5. For below 3GHz part, filter losses were only considered in the spurious frequency bands and the authorized band was not corrected for Band Reject Filter losses.
6. Only the worst case emission was recorded, if it complies with the limit, the other emissions deemed to comply with the limit.

Test Mode	Channel	Polarization	Verdict
11G	LCH	Horizontal	PASS

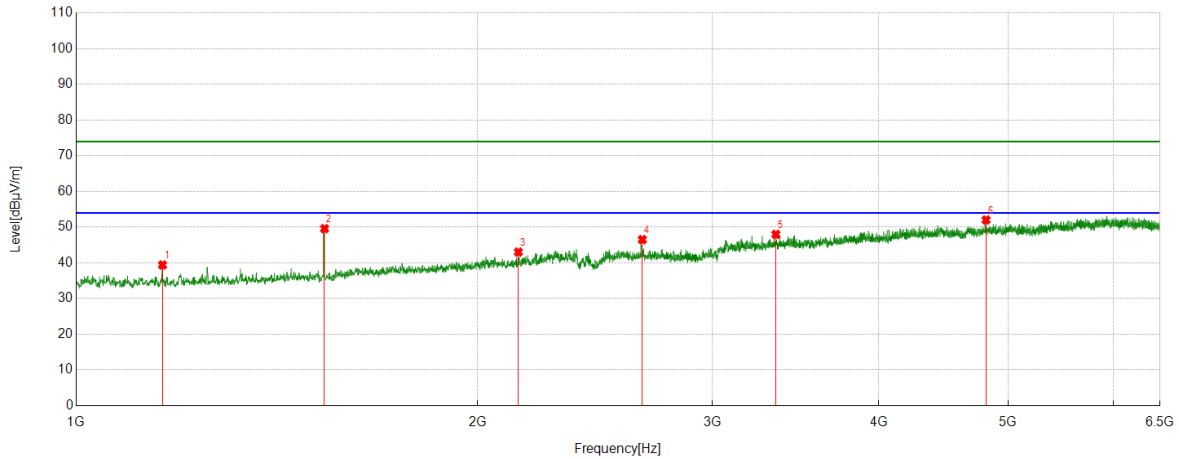


PK Result:

No.	Frequency	Reading Level	Correct Factor	Result	Limit	Margin	Remark
	[MHz]	[dBuV]	[dB/m]	[dBuV/m]	[dBuV/m]	[dB]	
1	1535.6295	52.70	-0.62	52.08	74.00	-21.92	Horizontal
2	2368.2960	47.11	4.80	51.91	74.00	-22.09	Horizontal
3	2509.9387	42.32	5.91	48.23	74.00	-25.77	Horizontal
4	3216.0895	37.96	9.42	47.38	74.00	-26.62	Horizontal
5	5155.7695	37.33	15.24	52.57	74.00	-21.43	Horizontal
6	5697.5872	35.44	17.44	52.88	74.00	-21.12	Horizontal

- Note: 1. Measurement = Reading Level + Correct Factor,
Correct Factor = Antenna Factor + Loss (Cable + Filter) – Amplifier Gain.
2. If Peak Result complies with AV limit, AV Result is deemed to comply with AV limit.
3. Test setup: RBW: 1 MHz, VBW: 3 MHz, Sweep time: auto.
4. Peak: Peak detector.
5. For below 3GHz part, filter losses were only considered in the spurious frequency bands and the authorized band was not corrected for Band Reject Filter losses.
6. Only the worst case emission was recorded, if it complies with the limit, the other emissions deemed to comply with the limit.

Test Mode	Channel	Polarization	Verdict
11G	LCH	Vertical	PASS

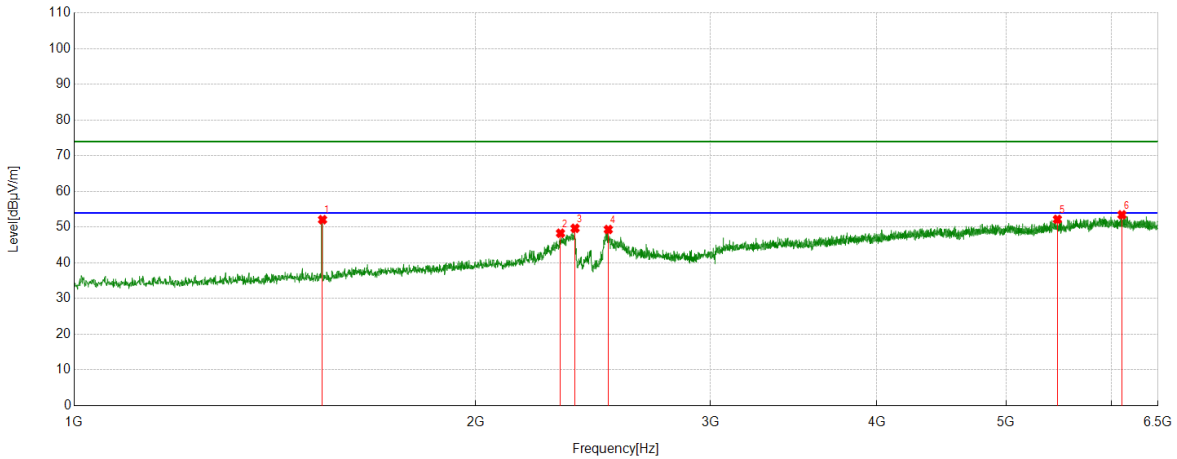


PK Result:

No.	Frequency	Reading Level	Correct Factor	Result	Limit	Margin	Remark
	[MHz]	[dBuV]	[dB/m]	[dBuV/m]	[dBuV/m]	[dB]	
1	1160.8951	41.13	-1.71	39.42	74.00	-34.58	Vertical
2	1535.6295	50.22	-0.62	49.60	74.00	-24.40	Vertical
3	2146.2058	39.22	3.81	43.03	74.00	-30.97	Vertical
4	2658.4573	40.44	6.09	46.53	74.00	-27.47	Vertical
5	3348.1060	37.61	10.37	47.98	74.00	-26.02	Vertical
6	4813.3517	36.55	15.48	52.03	74.00	-21.97	Vertical

- Note: 1. Measurement = Reading Level + Correct Factor,
Correct Factor = Antenna Factor + Loss (Cable + Filter) – Amplifier Gain.
2. If Peak Result complies with AV limit, AV Result is deemed to comply with AV limit.
3. Test setup: RBW: 1 MHz, VBW: 3 MHz, Sweep time: auto.
4. Peak: Peak detector.
5. For below 3GHz part, filter losses were only considered in the spurious frequency bands and the authorized band was not corrected for Band Reject Filter losses.
6. Only the worst case emission was recorded, if it complies with the limit, the other emissions deemed to comply with the limit.

Test Mode	Channel	Polarization	Verdict
11G	MCH	Horizontal	PASS

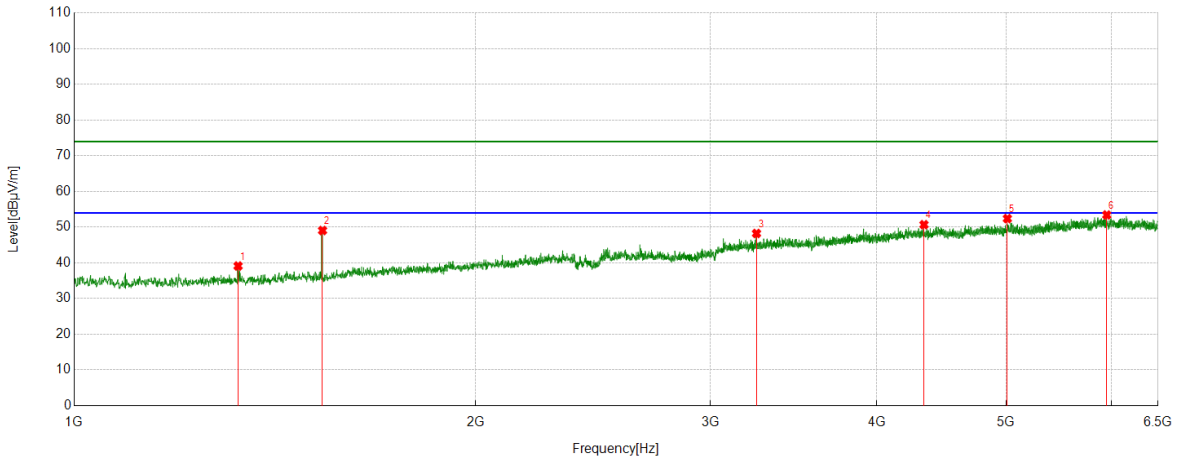


PK Result:

No.	Frequency	Reading Level	Correct Factor	Result	Limit	Margin	Remark
	[MHz]	[dBuV]	[dB/m]	[dBuV/m]	[dBuV/m]	[dB]	
1	1535.6295	52.72	-0.62	52.10	74.00	-21.90	Horizontal
2	2316.0395	43.70	4.60	48.30	74.00	-25.70	Horizontal
3	2375.1719	44.85	4.83	49.68	74.00	-24.32	Horizontal
4	2515.4394	43.56	5.79	49.35	74.00	-24.65	Horizontal
5	5463.1204	35.13	17.06	52.19	74.00	-21.81	Horizontal
6	6107.3884	35.41	18.06	53.47	74.00	-20.53	Horizontal

- Note: 1. Measurement = Reading Level + Correct Factor,
Correct Factor = Antenna Factor + Loss (Cable + Filter) – Amplifier Gain.
2. If Peak Result complies with AV limit, AV Result is deemed to comply with AV limit.
3. Test setup: RBW: 1 MHz, VBW: 3 MHz, Sweep time: auto.
4. Peak: Peak detector.
5. For below 3GHz part, filter losses were only considered in the spurious frequency bands and the authorized band was not corrected for Band Reject Filter losses.
6. Only the worst case emission was recorded, if it complies with the limit, the other emissions deemed to comply with the limit.

Test Mode	Channel	Polarization	Verdict
11G	MCH	Vertical	PASS

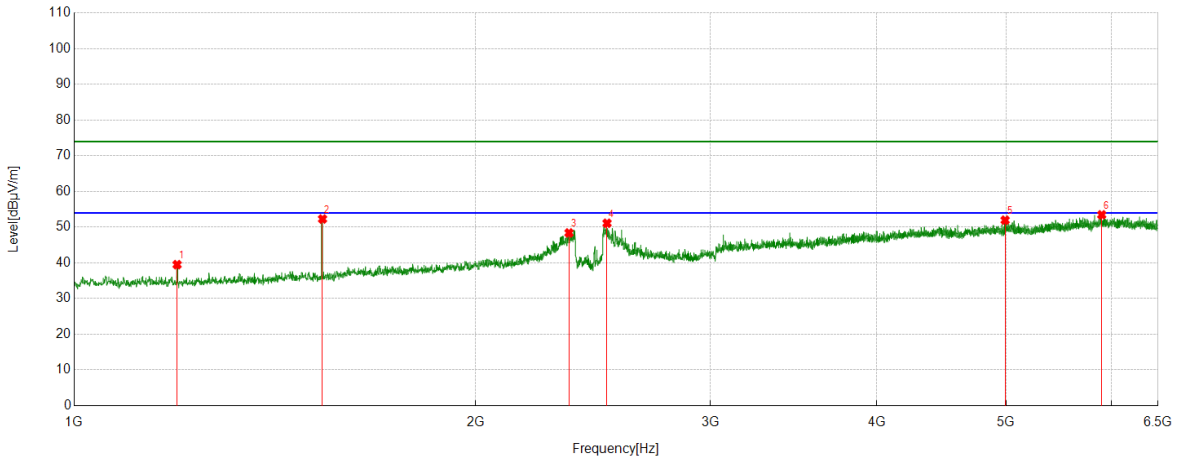


PK Result:

No.	Frequency	Reading Level	Correct Factor	Result	Limit	Margin	Remark
	[MHz]	[dBuV]	[dB/m]	[dBuV/m]	[dBuV/m]	[dB]	
1	1327.2909	40.26	-1.13	39.13	74.00	-34.87	Vertical
2	1535.6295	49.69	-0.62	49.07	74.00	-24.93	Vertical
3	3249.0936	38.85	9.39	48.24	74.00	-25.76	Vertical
4	4338.9174	37.28	13.42	50.70	74.00	-23.30	Vertical
5	5010.6888	37.02	15.39	52.41	74.00	-21.59	Vertical
6	5949.2437	34.95	18.47	53.42	74.00	-20.58	Vertical

- Note: 1. Measurement = Reading Level + Correct Factor,
Correct Factor = Antenna Factor + Loss (Cable + Filter) – Amplifier Gain.
2. If Peak Result complies with AV limit, AV Result is deemed to comply with AV limit.
3. Test setup: RBW: 1 MHz, VBW: 3 MHz, Sweep time: auto.
4. Peak: Peak detector.
5. For below 3GHz part, filter losses were only considered in the spurious frequency bands and the authorized band was not corrected for Band Reject Filter losses.
6. Only the worst case emission was recorded, if it complies with the limit, the other emissions deemed to comply with the limit.

Test Mode	Channel	Polarization	Verdict
11G	HCH	Horizontal	PASS

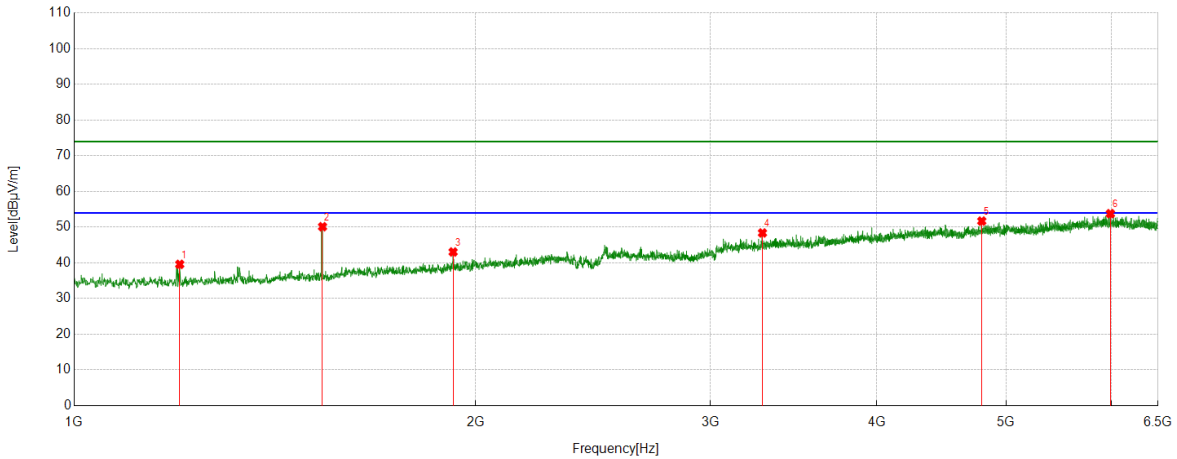


PK Result:

No.	Frequency	Reading Level	Correct Factor	Result	Limit	Margin	Remark
	[MHz]	[dBuV]	[dB/m]	[dBuV/m]	[dBuV/m]	[dB]	
1	1194.5868	41.72	-2.21	39.51	74.00	-34.49	Horizontal
2	1535.6295	52.92	-0.62	52.30	74.00	-21.70	Horizontal
3	2350.4188	43.62	4.77	48.39	74.00	-25.61	Horizontal
4	2509.9387	45.20	5.91	51.11	74.00	-22.89	Horizontal
5	4991.4364	36.82	15.14	51.96	74.00	-22.04	Horizontal
6	5897.6747	35.52	17.95	53.47	74.00	-20.53	Horizontal

- Note: 1. Measurement = Reading Level + Correct Factor,
Correct Factor = Antenna Factor + Loss (Cable + Filter) – Amplifier Gain.
2. If Peak Result complies with AV limit, AV Result is deemed to comply with AV limit.
3. Test setup: RBW: 1 MHz, VBW: 3 MHz, Sweep time: auto.
4. Peak: Peak detector.
5. For below 3GHz part, filter losses were only considered in the spurious frequency bands and the authorized band was not corrected for Band Reject Filter losses.
6. Only the worst case emission was recorded, if it complies with the limit, the other emissions deemed to comply with the limit.

Test Mode	Channel	Polarization	Verdict
11G	HCH	Vertical	PASS

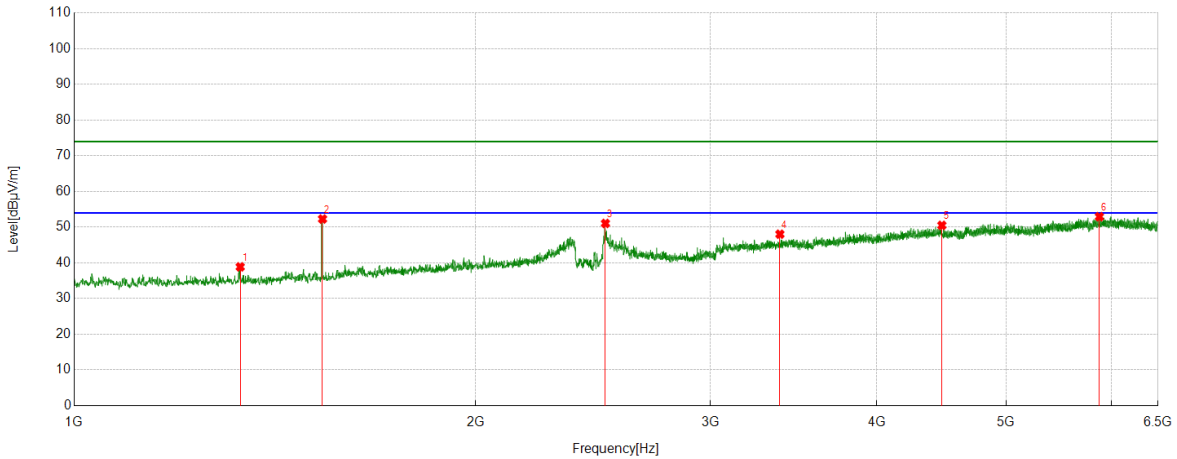


PK Result:

No.	Frequency	Reading Level	Correct Factor	Result	Limit	Margin	Remark
	[MHz]	[dBuV]	[dB/m]	[dBuV/m]	[dBuV/m]	[dB]	
1	1200.0875	41.88	-2.28	39.60	74.00	-34.40	Vertical
2	1535.6295	50.75	-0.62	50.13	74.00	-23.87	Vertical
3	1924.1155	40.03	3.02	43.05	74.00	-30.95	Vertical
4	3282.7853	38.72	9.66	48.38	74.00	-25.62	Vertical
5	4794.0993	36.51	15.20	51.71	74.00	-22.29	Vertical
6	5986.3733	35.42	18.37	53.79	74.00	-20.21	Vertical

- Note: 1. Measurement = Reading Level + Correct Factor,
Correct Factor = Antenna Factor + Loss (Cable + Filter) – Amplifier Gain.
2. If Peak Result complies with AV limit, AV Result is deemed to comply with AV limit.
3. Test setup: RBW: 1 MHz, VBW: 3 MHz, Sweep time: auto.
4. Peak: Peak detector.
5. For below 3GHz part, filter losses were only considered in the spurious frequency bands and the authorized band was not corrected for Band Reject Filter losses.
6. Only the worst case emission was recorded, if it complies with the limit, the other emissions deemed to comply with the limit.

Test Mode	Channel	Polarization	Verdict
11N HT20	LCH	Horizontal	PASS

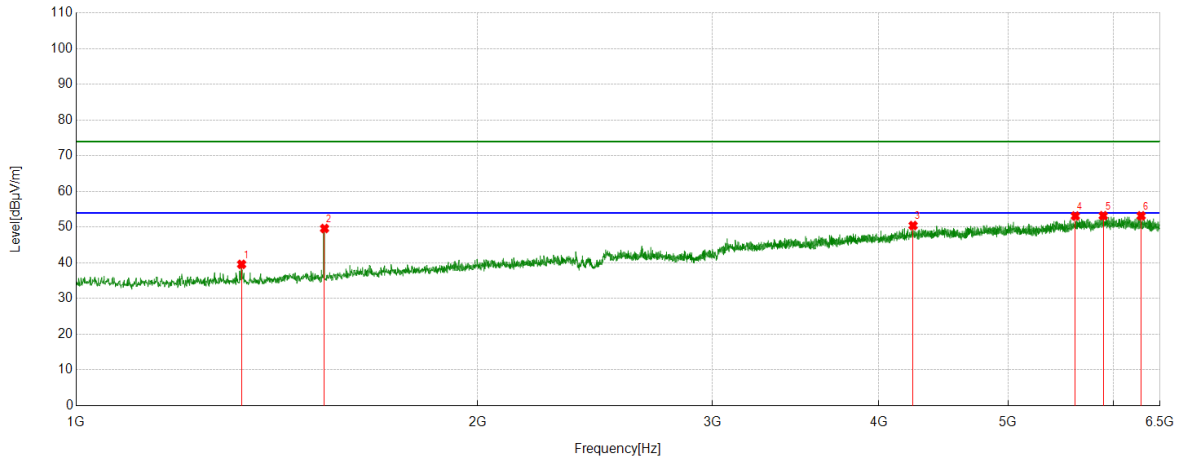


PK Result:

No.	Frequency	Reading Level	Correct Factor	Result	Limit	Margin	Remark
	[MHz]	[dBuV]	[dB/m]	[dBuV/m]	[dBuV/m]	[dB]	
1	1332.1040	39.99	-1.11	38.88	74.00	-35.12	Horizontal
2	1535.6295	52.92	-0.62	52.30	74.00	-21.70	Horizontal
3	2503.0629	45.17	5.89	51.06	74.00	-22.94	Horizontal
4	3383.1729	38.15	9.89	48.04	74.00	-25.96	Horizontal
5	4475.0594	36.03	14.48	50.51	74.00	-23.49	Horizontal
6	5874.2968	35.13	17.81	52.94	74.00	-21.06	Horizontal

- Note: 1. Measurement = Reading Level + Correct Factor,
Correct Factor = Antenna Factor + Loss (Cable + Filter) – Amplifier Gain.
2. If Peak Result complies with AV limit, AV Result is deemed to comply with AV limit.
3. Test setup: RBW: 1 MHz, VBW: 3 MHz, Sweep time: auto.
4. Peak: Peak detector.
5. For below 3GHz part, filter losses were only considered in the spurious frequency bands and the authorized band was not corrected for Band Reject Filter losses.
6. Only the worst case emission was recorded, if it complies with the limit, the other emissions deemed to comply with the limit.

Test Mode	Channel	Polarization	Verdict
11N HT20	LCH	Vertical	PASS

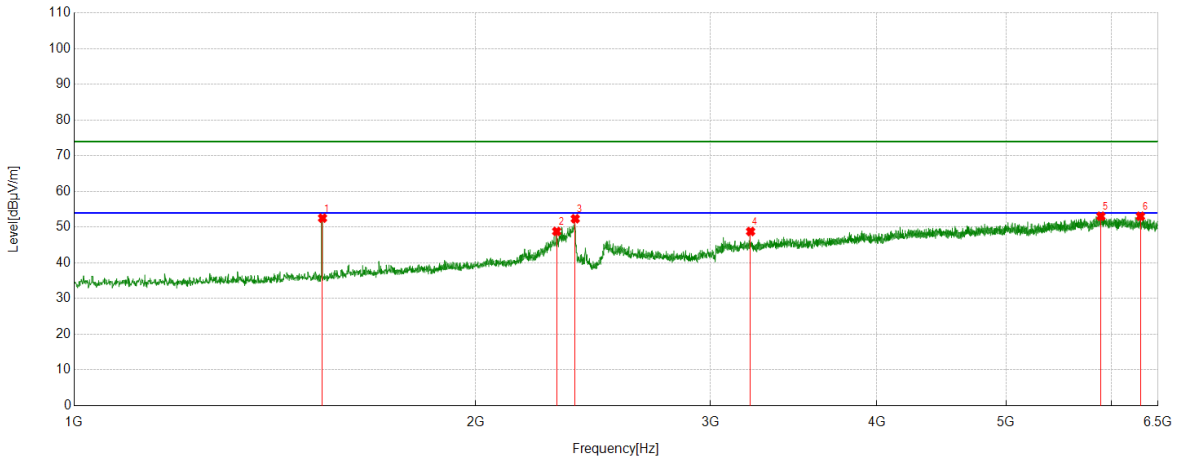


PK Result:

No.	Frequency	Reading Level	Correct Factor	Result	Limit	Margin	Remark
	[MHz]	[dBuV]	[dB/m]	[dBuV/m]	[dBuV/m]	[dB]	
1	1330.7288	40.68	-1.08	39.60	74.00	-34.40	Vertical
2	1535.6295	50.25	-0.62	49.63	74.00	-24.37	Vertical
3	4243.3429	36.50	13.96	50.46	74.00	-23.54	Vertical
4	5615.7645	35.68	17.46	53.14	74.00	-20.86	Vertical
5	5892.8616	35.24	17.97	53.21	74.00	-20.79	Vertical
6	6291.6615	34.54	18.64	53.18	74.00	-20.82	Vertical

- Note: 1. Measurement = Reading Level + Correct Factor,
Correct Factor = Antenna Factor + Loss (Cable + Filter) – Amplifier Gain.
- If Peak Result complies with AV limit, AV Result is deemed to comply with AV limit.
 - Test setup: RBW: 1 MHz, VBW: 3 MHz, Sweep time: auto.
 - Peak: Peak detector.
 - For below 3GHz part, filter losses were only considered in the spurious frequency bands and the authorized band was not corrected for Band Reject Filter losses.
 - Only the worst case emission was recorded, if it complies with the limit, the other emissions deemed to comply with the limit.

Test Mode	Channel	Polarization	Verdict
11N HT20	MCH	Horizontal	PASS

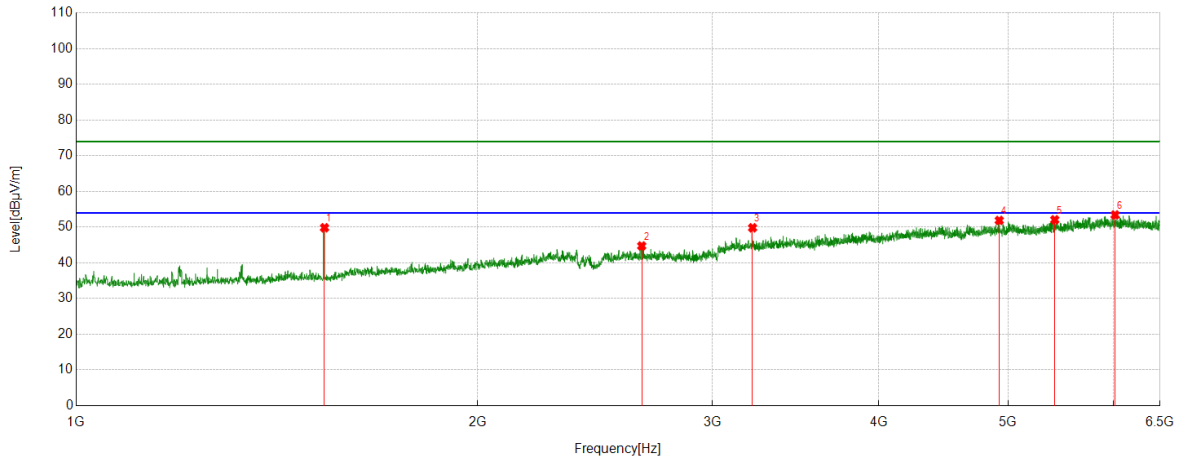


PK Result:

No.	Frequency	Reading Level	Correct Factor	Result	Limit	Margin	Remark
	[MHz]	[dBuV]	[dB/m]	[dBuV/m]	[dBuV/m]	[dB]	
1	1535.6295	53.16	-0.62	52.54	74.00	-21.46	Horizontal
2	2300.9126	44.71	4.11	48.82	74.00	-25.18	Horizontal
3	2375.8595	47.53	4.83	52.36	74.00	-21.64	Horizontal
4	3216.0895	39.37	9.42	48.79	74.00	-25.21	Horizontal
5	5888.7361	35.13	17.94	53.07	74.00	-20.93	Horizontal
6	6305.4132	34.27	18.79	53.06	74.00	-20.94	Horizontal

- Note: 1. Measurement = Reading Level + Correct Factor,
Correct Factor = Antenna Factor + Loss (Cable + Filter) – Amplifier Gain.
2. If Peak Result complies with AV limit, AV Result is deemed to comply with AV limit.
3. Test setup: RBW: 1 MHz, VBW: 3 MHz, Sweep time: auto.
4. Peak: Peak detector.
5. For below 3GHz part, filter losses were only considered in the spurious frequency bands and the authorized band was not corrected for Band Reject Filter losses.
6. Only the worst case emission was recorded, if it complies with the limit, the other emissions deemed to comply with the limit.

Test Mode	Channel	Polarization	Verdict
11N HT20	MCH	Vertical	PASS

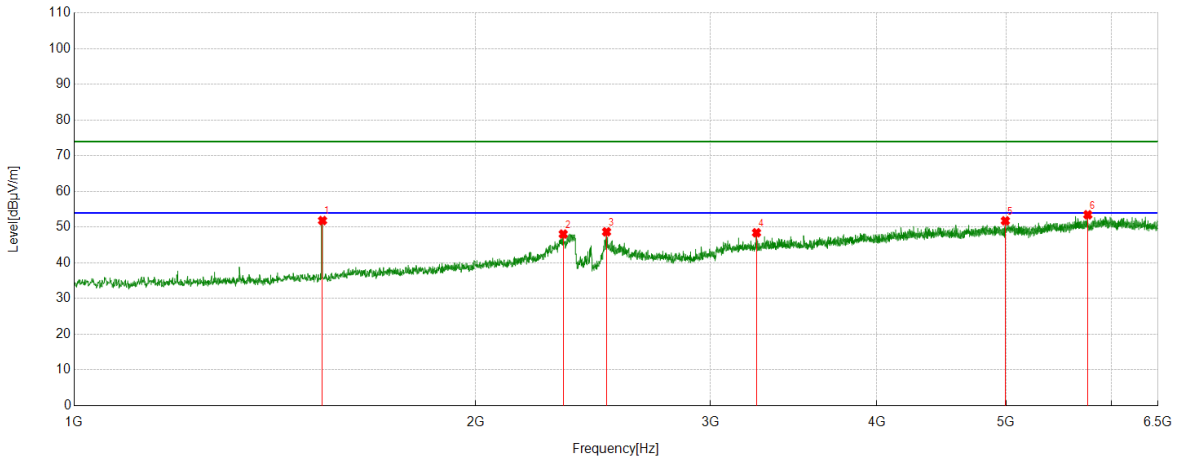


PK Result:

No.	Frequency	Reading Level	Correct Factor	Result	Limit	Margin	Remark
	[MHz]	[dBuV]	[dB/m]	[dBuV/m]	[dBuV/m]	[dB]	
1	1535.6295	50.46	-0.62	49.84	74.00	-24.16	Vertical
2	2655.7070	38.53	6.21	44.74	74.00	-29.26	Vertical
3	3216.0895	40.40	9.42	49.82	74.00	-24.18	Vertical
4	4924.0530	36.55	15.34	51.89	74.00	-22.11	Vertical
5	5419.8025	34.96	17.11	52.07	74.00	-21.93	Vertical
6	6014.5643	35.37	18.06	53.43	74.00	-20.57	Vertical

- Note: 1. Measurement = Reading Level + Correct Factor,
Correct Factor = Antenna Factor + Loss (Cable + Filter) – Amplifier Gain.
2. If Peak Result complies with AV limit, AV Result is deemed to comply with AV limit.
3. Test setup: RBW: 1 MHz, VBW: 3 MHz, Sweep time: auto.
4. Peak: Peak detector.
5. For below 3GHz part, filter losses were only considered in the spurious frequency bands and the authorized band was not corrected for Band Reject Filter losses.
6. Only the worst case emission was recorded, if it complies with the limit, the other emissions deemed to comply with the limit.

Test Mode	Channel	Polarization	Verdict
11N HT20	HCH	Horizontal	PASS

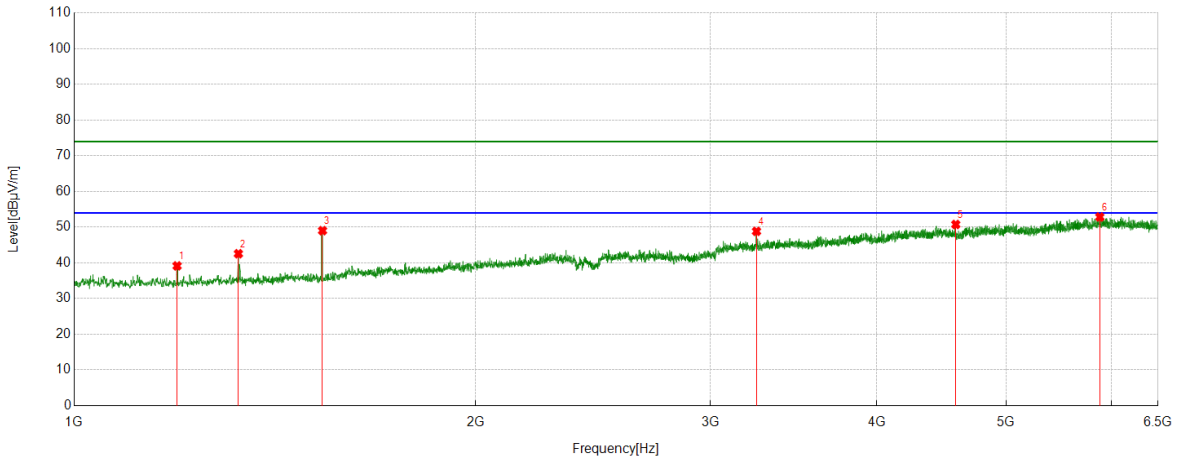


PK Result:

No.	Frequency	Reading Level	Correct Factor	Result	Limit	Margin	Remark
	[MHz]	[dBuV]	[dB/m]	[dBuV/m]	[dBuV/m]	[dB]	
1	1535.6295	52.47	-0.62	51.85	74.00	-22.15	Horizontal
2	2327.0409	43.10	4.97	48.07	74.00	-25.93	Horizontal
3	2507.8760	42.79	5.91	48.70	74.00	-25.30	Horizontal
4	3249.0936	39.05	9.39	48.44	74.00	-25.56	Horizontal
5	4993.4992	36.60	15.19	51.79	74.00	-22.21	Horizontal
6	5757.4072	35.55	17.93	53.48	74.00	-20.52	Horizontal

- Note: 1. Measurement = Reading Level + Correct Factor,
Correct Factor = Antenna Factor + Loss (Cable + Filter) – Amplifier Gain.
2. If Peak Result complies with AV limit, AV Result is deemed to comply with AV limit.
3. Test setup: RBW: 1 MHz, VBW: 3 MHz, Sweep time: auto.
4. Peak: Peak detector.
5. For below 3GHz part, filter losses were only considered in the spurious frequency bands and the authorized band was not corrected for Band Reject Filter losses.
6. Only the worst case emission was recorded, if it complies with the limit, the other emissions deemed to comply with the limit.

Test Mode	Channel	Polarization	Verdict
11N HT20	HCH	Vertical	PASS

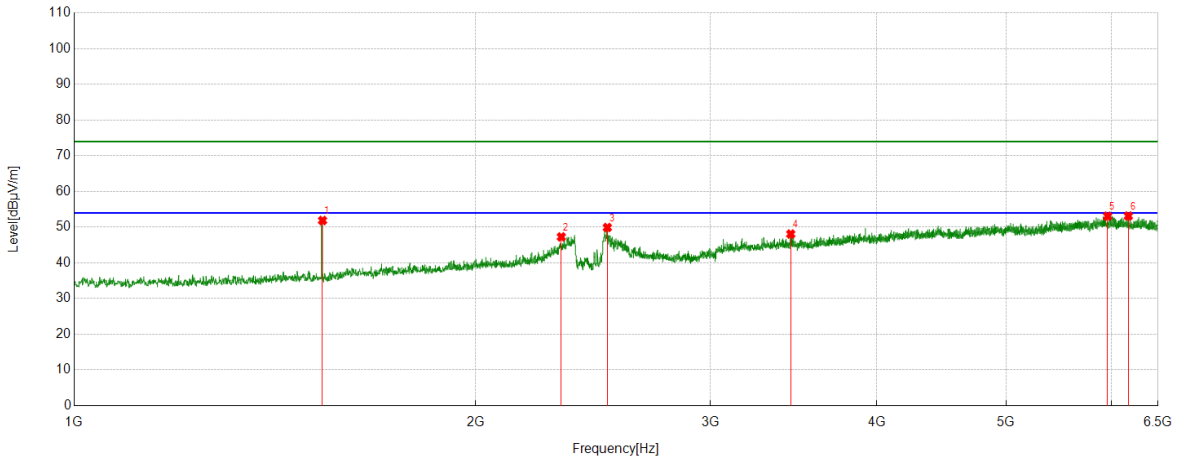


PK Result:

No.	Frequency	Reading Level	Correct Factor	Result	Limit	Margin	Remark
	[MHz]	[dBuV]	[dB/m]	[dBuV/m]	[dBuV/m]	[dB]	
1	1194.5868	41.37	-2.21	39.16	74.00	-34.84	Vertical
2	1327.9785	43.67	-1.10	42.57	74.00	-31.43	Vertical
3	1535.6295	49.65	-0.62	49.03	74.00	-24.97	Vertical
4	3249.0936	39.45	9.39	48.84	74.00	-25.16	Vertical
5	4583.6980	36.66	14.10	50.76	74.00	-23.24	Vertical
6	5878.4223	35.16	17.70	52.86	74.00	-21.14	Vertical

- Note: 1. Measurement = Reading Level + Correct Factor,
Correct Factor = Antenna Factor + Loss (Cable + Filter) – Amplifier Gain.
2. If Peak Result complies with AV limit, AV Result is deemed to comply with AV limit.
3. Test setup: RBW: 1 MHz, VBW: 3 MHz, Sweep time: auto.
4. Peak: Peak detector.
5. For below 3GHz part, filter losses were only considered in the spurious frequency bands and the authorized band was not corrected for Band Reject Filter losses.
6. Only the worst case emission was recorded, if it complies with the limit, the other emissions deemed to comply with the limit.

Test Mode	Channel	Polarization	Verdict
11N HT40	LCH	Horizontal	PASS

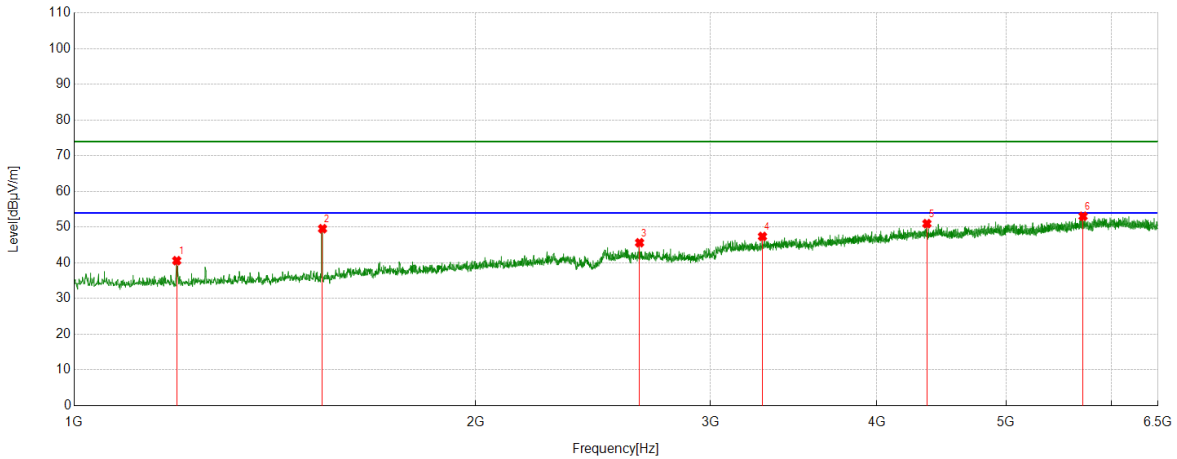


PK Result:

No.	Frequency	Reading Level	Correct Factor	Result	Limit	Margin	Remark
	[MHz]	[dBuV]	[dB/m]	[dBuV/m]	[dBuV/m]	[dB]	
1	1535.6295	52.49	-0.62	51.87	74.00	-22.13	Horizontal
2	2319.4774	42.49	4.79	47.28	74.00	-26.72	Horizontal
3	2511.3139	44.03	5.88	49.91	74.00	-24.09	Horizontal
4	3447.1184	37.68	10.40	48.08	74.00	-25.92	Horizontal
5	5958.1823	34.53	18.55	53.08	74.00	-20.92	Horizontal
6	6175.4594	34.33	18.81	53.14	74.00	-20.86	Horizontal

- Note: 1. Measurement = Reading Level + Correct Factor,
Correct Factor = Antenna Factor + Loss (Cable + Filter) – Amplifier Gain.
2. If Peak Result complies with AV limit, AV Result is deemed to comply with AV limit.
3. Test setup: RBW: 1 MHz, VBW: 3 MHz, Sweep time: auto.
4. Peak: Peak detector.
5. For below 3GHz part, filter losses were only considered in the spurious frequency bands and the authorized band was not corrected for Band Reject Filter losses.
6. Only the worst case emission was recorded, if it complies with the limit, the other emissions deemed to comply with the limit.

Test Mode	Channel	Polarization	Verdict
11N HT40	LCH	Vertical	PASS

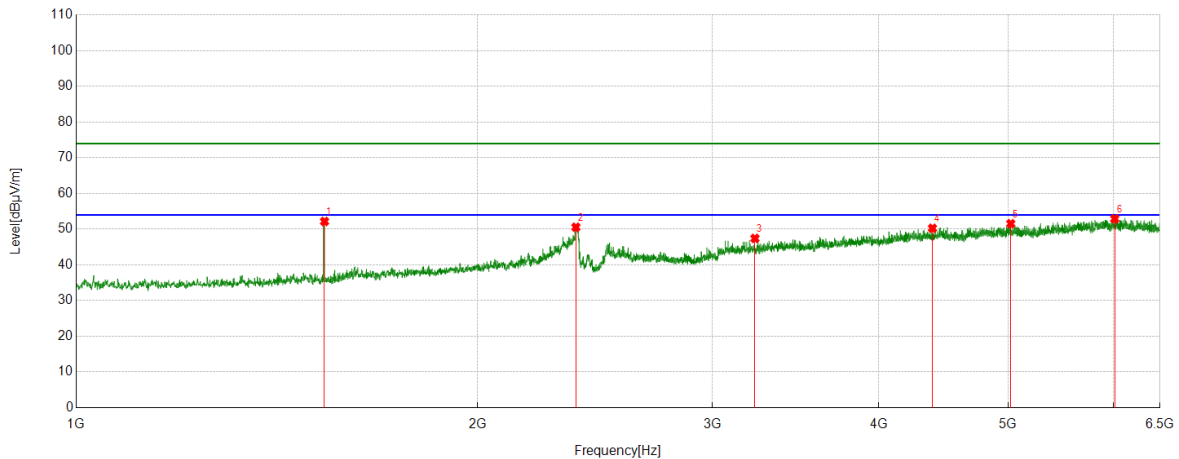


PK Result:

No.	Frequency	Reading Level	Correct Factor	Result	Limit	Margin	Remark
	[MHz]	[dBuV]	[dB/m]	[dBuV/m]	[dBuV/m]	[dB]	
1	1193.8992	42.81	-2.19	40.62	74.00	-33.38	Vertical
2	1535.6295	50.19	-0.62	49.57	74.00	-24.43	Vertical
3	2655.0194	39.40	6.24	45.64	74.00	-28.36	Vertical
4	3282.7853	37.74	9.66	47.40	74.00	-26.60	Vertical
5	4360.9201	37.47	13.52	50.99	74.00	-23.01	Vertical
6	5710.6513	35.59	17.47	53.06	74.00	-20.94	Vertical

- Note: 1. Measurement = Reading Level + Correct Factor,
Correct Factor = Antenna Factor + Loss (Cable + Filter) – Amplifier Gain.
2. If Peak Result complies with AV limit, AV Result is deemed to comply with AV limit.
3. Test setup: RBW: 1 MHz, VBW: 3 MHz, Sweep time: auto.
4. Peak: Peak detector.
5. For below 3GHz part, filter losses were only considered in the spurious frequency bands and the authorized band was not corrected for Band Reject Filter losses.
6. Only the worst case emission was recorded, if it complies with the limit, the other emissions deemed to comply with the limit.

Test Mode	Channel	Polarization	Verdict
11N HT40	MCH	Horizontal	PASS

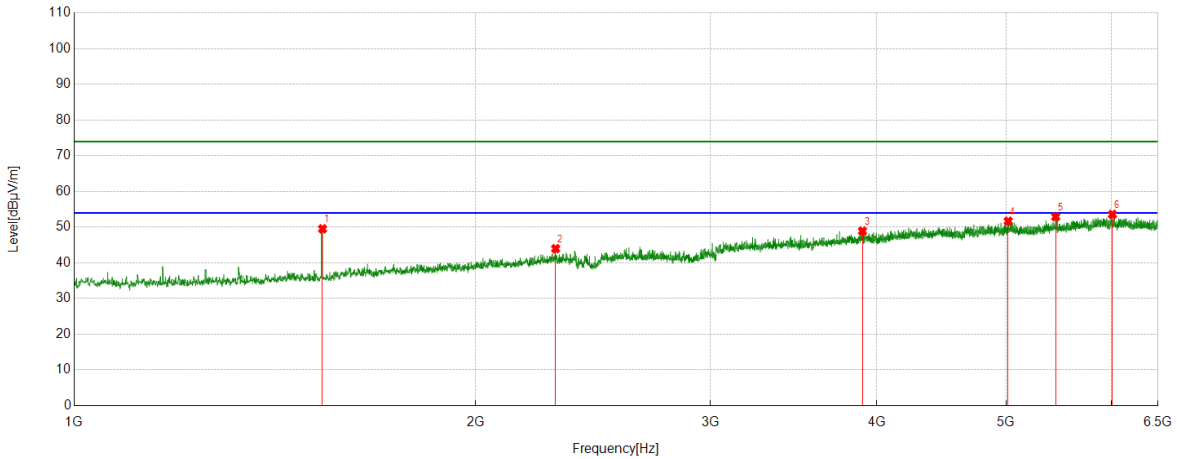


PK Result:

No.	Frequency	Reading Level	Correct Factor	Result	Limit	Margin	Remark
	[MHz]	[dBuV]	[dB/m]	[dBuV/m]	[dBuV/m]	[dB]	
1	1535.6295	52.79	-0.62	52.17	74.00	-21.83	Horizontal
2	2370.3588	45.74	4.81	50.55	74.00	-23.45	Horizontal
3	3229.1536	38.33	9.09	47.42	74.00	-26.58	Horizontal
4	4387.7360	36.48	13.78	50.26	74.00	-23.74	Horizontal
5	5023.0654	35.95	15.60	51.55	74.00	-22.45	Horizontal
6	6011.1264	34.80	18.12	52.92	74.00	-21.08	Horizontal

- Note: 1. Measurement = Reading Level + Correct Factor,
Correct Factor = Antenna Factor + Loss (Cable + Filter) – Amplifier Gain.
2. If Peak Result complies with AV limit, AV Result is deemed to comply with AV limit.
3. Test setup: RBW: 1 MHz, VBW: 3 MHz, Sweep time: auto.
4. Peak: Peak detector.
5. For below 3GHz part, filter losses were only considered in the spurious frequency bands and the authorized band was not corrected for Band Reject Filter losses.
6. Only the worst case emission was recorded, if it complies with the limit, the other emissions deemed to comply with the limit.

Test Mode	Channel	Polarization	Verdict
11N HT40	MCH	Vertical	PASS

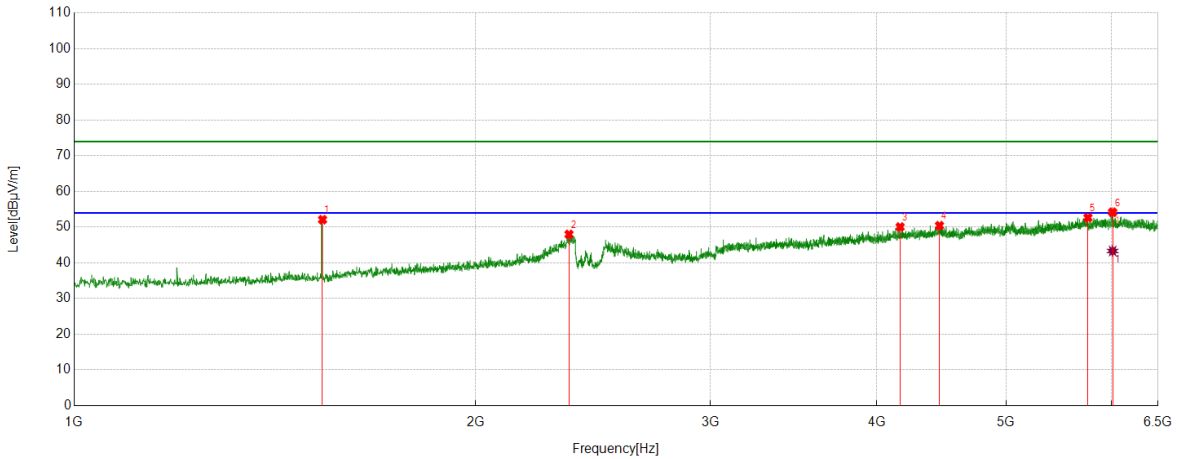


PK Result:

No.	Frequency	Reading Level	Correct Factor	Result	Limit	Margin	Remark
	[MHz]	[dBuV]	[dB/m]	[dBuV/m]	[dBuV/m]	[dB]	
1	1535.6295	50.16	-0.62	49.54	74.00	-24.46	Vertical
2	2296.7871	39.79	4.19	43.98	74.00	-30.02	Vertical
3	3901.6127	36.41	12.51	48.92	74.00	-25.08	Vertical
4	5018.2523	36.20	15.48	51.68	74.00	-22.32	Vertical
5	5447.3059	35.38	17.54	52.92	74.00	-21.08	Vertical
6	6007.0009	35.40	18.17	53.57	74.00	-20.43	Vertical

- Note: 1. Measurement = Reading Level + Correct Factor,
Correct Factor = Antenna Factor + Loss (Cable + Filter) – Amplifier Gain.
2. If Peak Result complies with AV limit, AV Result is deemed to comply with AV limit.
3. Test setup: RBW: 1 MHz, VBW: 3 MHz, Sweep time: auto.
4. Peak: Peak detector.
5. For below 3GHz part, filter losses were only considered in the spurious frequency bands and the authorized band was not corrected for Band Reject Filter losses.
6. Only the worst case emission was recorded, if it complies with the limit, the other emissions deemed to comply with the limit.

Test Mode	Channel	Polarization	Verdict
11N HT40	HCH	Horizontal	PASS



PK Result:

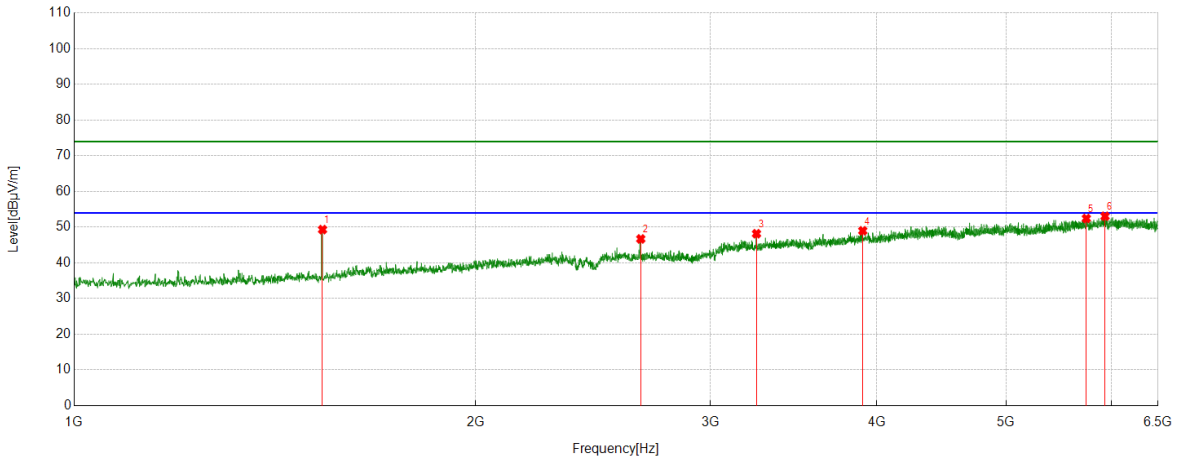
No.	Frequency	Reading Level	Correct Factor	Result	Limit	Margin	Remark
	[MHz]	[dBuV]	[dB/m]	[dBuV/m]	[dBuV/m]	[dB]	
1	1535.6295	52.73	-0.62	52.11	74.00	-21.89	Horizontal
2	2350.4188	43.23	4.77	48.00	74.00	-26.00	Horizontal
3	4163.5829	36.70	13.37	50.07	74.00	-23.93	Horizontal
4	4456.4946	35.75	14.70	50.45	74.00	-23.55	Horizontal
5	5758.7823	34.69	17.97	52.66	74.00	-21.34	Horizontal
6	6009.7512	35.99	18.14	54.13	74.00	-19.87	Horizontal

AV Result:

No.	Frequency	Reading Level	Correct Factor	Result	Limit	Margin	Remark
	[MHz]	[dBuV]	[dB/m]	[dBuV/m]	[dBuV/m]	[dB]	
1	6009.7512	25.19	18.14	43.33	54.00	-10.67	Horizontal

- Note: 1. Measurement = Reading Level + Correct Factor,
Correct Factor = Antenna Factor + Loss (Cable + Filter) – Amplifier Gain.
2. If Peak Result complies with AV limit, AV Result is deemed to comply with AV limit.
3. Test setup: RBW: 1 MHz, VBW: 3 MHz, Sweep time: auto.
4. Peak: Peak detector.
5. For below 3GHz part, filter losses were only considered in the spurious frequency bands and the authorized band was not corrected for Band Reject Filter losses.
6. Only the worst case emission was recorded, if it complies with the limit, the other emissions deemed to comply with the limit.

Test Mode	Channel	Polarization	Verdict
11N HT40	HCH	Vertical	PASS

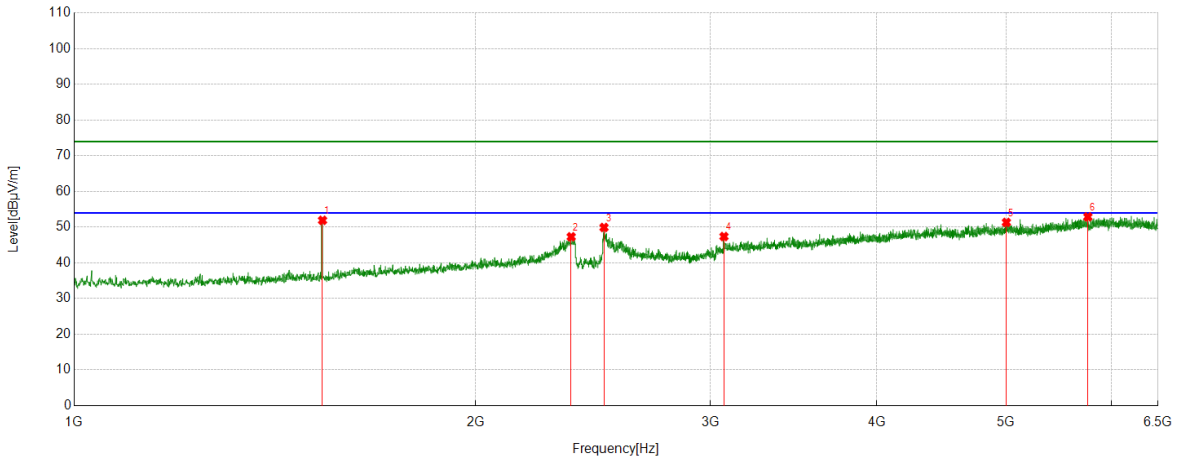


PK Result:

No.	Frequency	Reading Level	Correct Factor	Result	Limit	Margin	Remark
	[MHz]	[dBuV]	[dB/m]	[dBuV/m]	[dBuV/m]	[dB]	
1	1535.6295	49.95	-0.62	49.33	74.00	-24.67	Vertical
2	2660.5201	40.67	6.04	46.71	74.00	-27.29	Vertical
3	3249.0936	38.78	9.39	48.17	74.00	-25.83	Vertical
4	3903.6755	36.48	12.52	49.00	74.00	-25.00	Vertical
5	5742.9679	34.65	17.79	52.44	74.00	-21.56	Vertical
6	5932.0540	34.25	18.82	53.07	74.00	-20.93	Vertical

- Note: 1. Measurement = Reading Level + Correct Factor,
Correct Factor = Antenna Factor + Loss (Cable + Filter) – Amplifier Gain.
2. If Peak Result complies with AV limit, AV Result is deemed to comply with AV limit.
3. Test setup: RBW: 1 MHz, VBW: 3 MHz, Sweep time: auto.
4. Peak: Peak detector.
5. For below 3GHz part, filter losses were only considered in the spurious frequency bands and the authorized band was not corrected for Band Reject Filter losses.
6. Only the worst case emission was recorded, if it complies with the limit, the other emissions deemed to comply with the limit.

Test Mode	Channel	Polarization	Verdict
11AX HE20	LCH	Horizontal	PASS

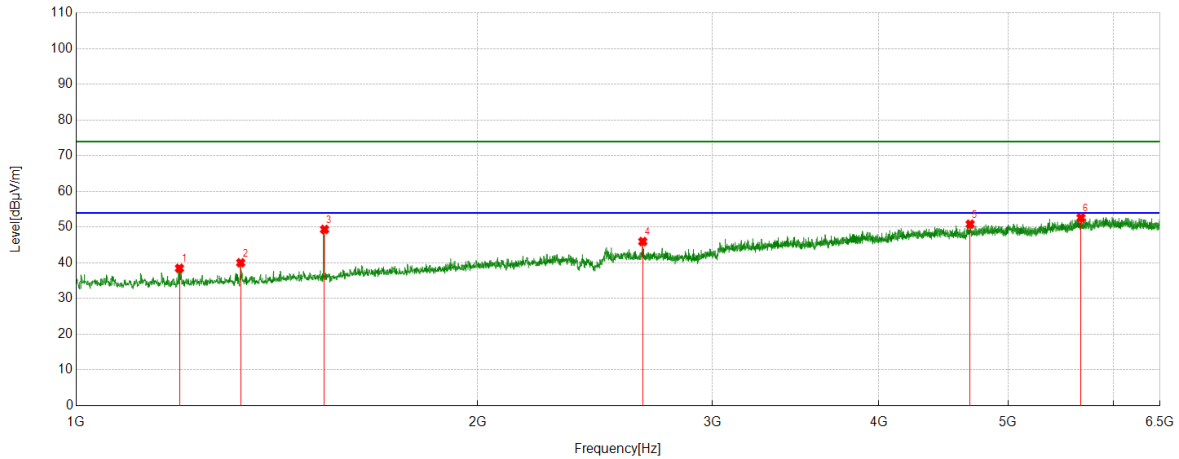


PK Result:

No.	Frequency	Reading Level	Correct Factor	Result	Limit	Margin	Remark
	[MHz]	[dBuV]	[dB/m]	[dBuV/m]	[dBuV/m]	[dB]	
1	1535.6295	52.54	-0.62	51.92	74.00	-22.08	Horizontal
2	2359.3574	42.52	4.78	47.30	74.00	-26.70	Horizontal
3	2496.8746	44.06	5.86	49.92	74.00	-24.08	Horizontal
4	3071.6965	38.11	9.27	47.38	74.00	-26.62	Horizontal
5	5002.4378	36.02	15.32	51.34	74.00	-22.66	Horizontal
6	5758.0948	34.94	17.95	52.89	74.00	-21.11	Horizontal

- Note: 1. Measurement = Reading Level + Correct Factor,
Correct Factor = Antenna Factor + Loss (Cable + Filter) – Amplifier Gain.
2. If Peak Result complies with AV limit, AV Result is deemed to comply with AV limit.
3. Test setup: RBW: 1 MHz, VBW: 3 MHz, Sweep time: auto.
4. Peak: Peak detector.
5. For below 3GHz part, filter losses were only considered in the spurious frequency bands and the authorized band was not corrected for Band Reject Filter losses.
6. Only the worst case emission was recorded, if it complies with the limit, the other emissions deemed to comply with the limit.

Test Mode	Channel	Polarization	Verdict
11AX HE20	LCH	Vertical	PASS

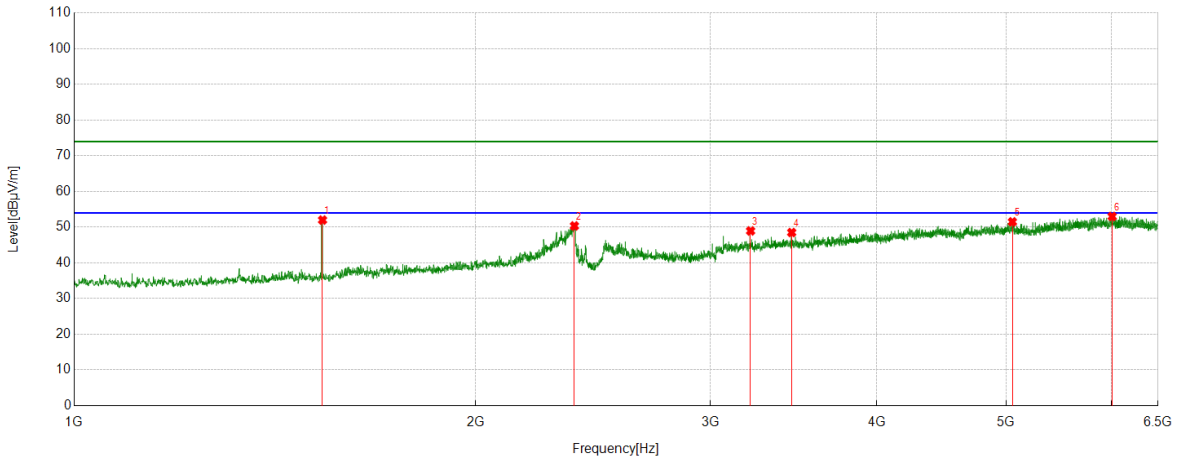


PK Result:

No.	Frequency	Reading Level	Correct Factor	Result	Limit	Margin	Remark
	[MHz]	[dBuV]	[dB/m]	[dBuV/m]	[dBuV/m]	[dB]	
1	1195.2744	40.69	-2.21	38.48	74.00	-35.52	Vertical
2	1328.6661	41.12	-1.09	40.03	74.00	-33.97	Vertical
3	1535.6295	49.99	-0.62	49.37	74.00	-24.63	Vertical
4	2660.5201	39.94	6.04	45.98	74.00	-28.02	Vertical
5	4682.7103	35.70	15.14	50.84	74.00	-23.16	Vertical
6	5670.0838	35.36	17.27	52.63	74.00	-21.37	Vertical

- Note: 1. Measurement = Reading Level + Correct Factor,
Correct Factor = Antenna Factor + Loss (Cable + Filter) – Amplifier Gain.
2. If Peak Result complies with AV limit, AV Result is deemed to comply with AV limit.
3. Test setup: RBW: 1 MHz, VBW: 3 MHz, Sweep time: auto.
4. Peak: Peak detector.
5. For below 3GHz part, filter losses were only considered in the spurious frequency bands and the authorized band was not corrected for Band Reject Filter losses.
6. Only the worst case emission was recorded, if it complies with the limit, the other emissions deemed to comply with the limit.

Test Mode	Channel	Polarization	Verdict
11AX HE20	MCH	Horizontal	PASS

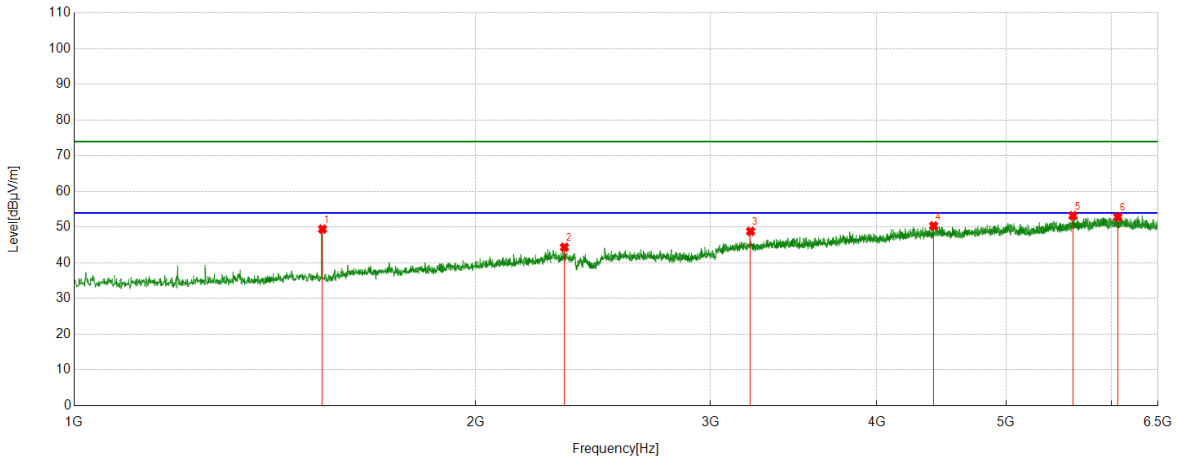


PK Result:

No.	Frequency	Reading Level	Correct Factor	Result	Limit	Margin	Remark
	[MHz]	[dBuV]	[dB/m]	[dBuV/m]	[dBuV/m]	[dB]	
1	1535.6295	52.62	-0.62	52.00	74.00	-22.00	Horizontal
2	2372.4216	45.54	4.82	50.36	74.00	-23.64	Horizontal
3	3216.0895	39.53	9.42	48.95	74.00	-25.05	Horizontal
4	3452.6191	37.96	10.55	48.51	74.00	-25.49	Horizontal
5	5054.6943	35.54	15.96	51.50	74.00	-22.50	Horizontal
6	6004.9381	34.81	18.20	53.01	74.00	-20.99	Horizontal

- Note: 1. Measurement = Reading Level + Correct Factor,
Correct Factor = Antenna Factor + Loss (Cable + Filter) – Amplifier Gain.
2. If Peak Result complies with AV limit, AV Result is deemed to comply with AV limit.
3. Test setup: RBW: 1 MHz, VBW: 3 MHz, Sweep time: auto.
4. Peak: Peak detector.
5. For below 3GHz part, filter losses were only considered in the spurious frequency bands and the authorized band was not corrected for Band Reject Filter losses.
6. Only the worst case emission was recorded, if it complies with the limit, the other emissions deemed to comply with the limit.

Test Mode	Channel	Polarization	Verdict
11AX HE20	MCH	Vertical	PASS

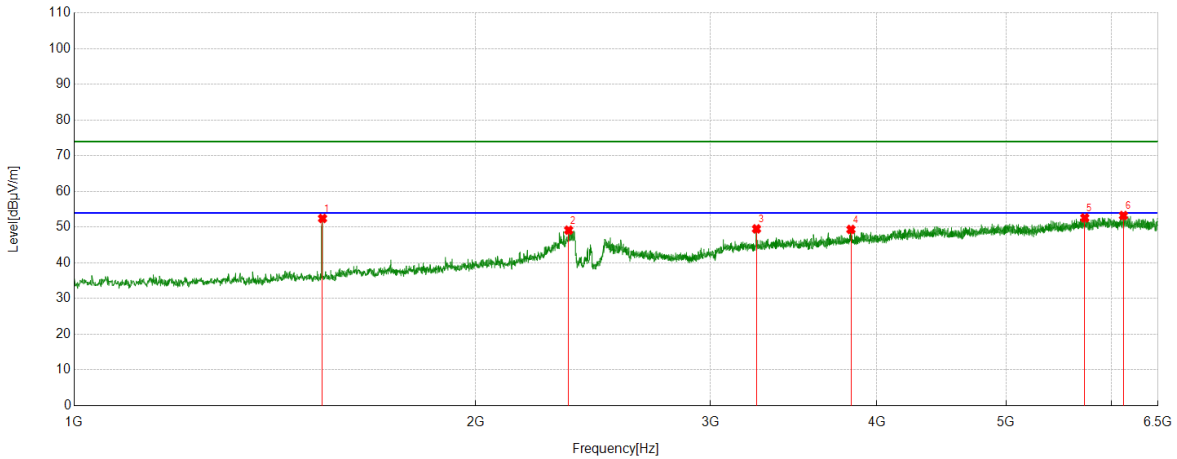


PK Result:

No.	Frequency	Reading Level	Correct Factor	Result	Limit	Margin	Remark
	[MHz]	[dBuV]	[dB/m]	[dBuV/m]	[dBuV/m]	[dB]	
1	1535.6295	50.08	-0.62	49.46	74.00	-24.54	Vertical
2	2331.854	39.35	5.03	44.38	74.00	-29.62	Vertical
3	3216.0895	39.42	9.42	48.84	74.00	-25.16	Vertical
4	4411.8015	36.59	13.78	50.37	74.00	-23.63	Vertical
5	5612.3265	35.74	17.48	53.22	74.00	-20.78	Vertical
6	6063.3829	34.93	17.96	52.89	74.00	-21.11	Vertical

- Note: 1. Measurement = Reading Level + Correct Factor,
Correct Factor = Antenna Factor + Loss (Cable + Filter) – Amplifier Gain.
2. If Peak Result complies with AV limit, AV Result is deemed to comply with AV limit.
3. Test setup: RBW: 1 MHz, VBW: 3 MHz, Sweep time: auto.
4. Peak: Peak detector.
5. For below 3GHz part, filter losses were only considered in the spurious frequency bands and the authorized band was not corrected for Band Reject Filter losses.
6. Only the worst case emission was recorded, if it complies with the limit, the other emissions deemed to comply with the limit.

Test Mode	Channel	Polarization	Verdict
11AX HE20	HCH	Horizontal	PASS

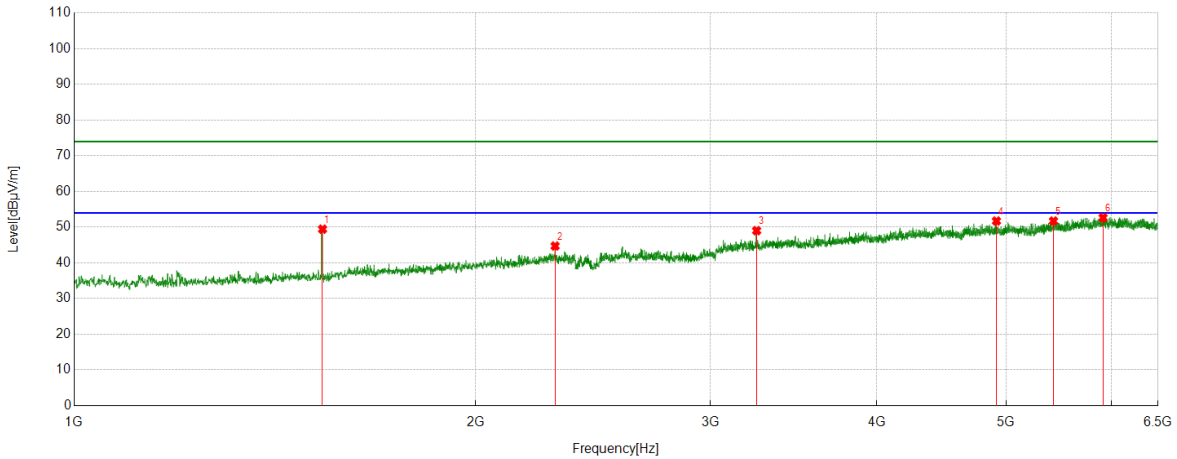


PK Result:

No.	Frequency	Reading Level	Correct Factor	Result	Limit	Margin	Remark
	[MHz]	[dBuV]	[dB/m]	[dBuV/m]	[dBuV/m]	[dB]	
1	1535.6295	53.07	-0.62	52.45	74.00	-21.55	Horizontal
2	2349.0436	44.37	4.79	49.16	74.00	-24.84	Horizontal
3	3249.0936	40.13	9.39	49.52	74.00	-24.48	Horizontal
4	3824.6031	37.20	12.16	49.36	74.00	-24.64	Horizontal
5	5727.8410	35.20	17.40	52.60	74.00	-21.40	Horizontal
6	6123.2029	35.00	18.26	53.26	74.00	-20.74	Horizontal

- Note: 1. Measurement = Reading Level + Correct Factor,
Correct Factor = Antenna Factor + Loss (Cable + Filter) – Amplifier Gain.
2. If Peak Result complies with AV limit, AV Result is deemed to comply with AV limit.
3. Test setup: RBW: 1 MHz, VBW: 3 MHz, Sweep time: auto.
4. Peak: Peak detector.
5. For below 3GHz part, filter losses were only considered in the spurious frequency bands and the authorized band was not corrected for Band Reject Filter losses.
6. Only the worst case emission was recorded, if it complies with the limit, the other emissions deemed to comply with the limit.

Test Mode	Channel	Polarization	Verdict
11AX HE20	HCH	Vertical	PASS

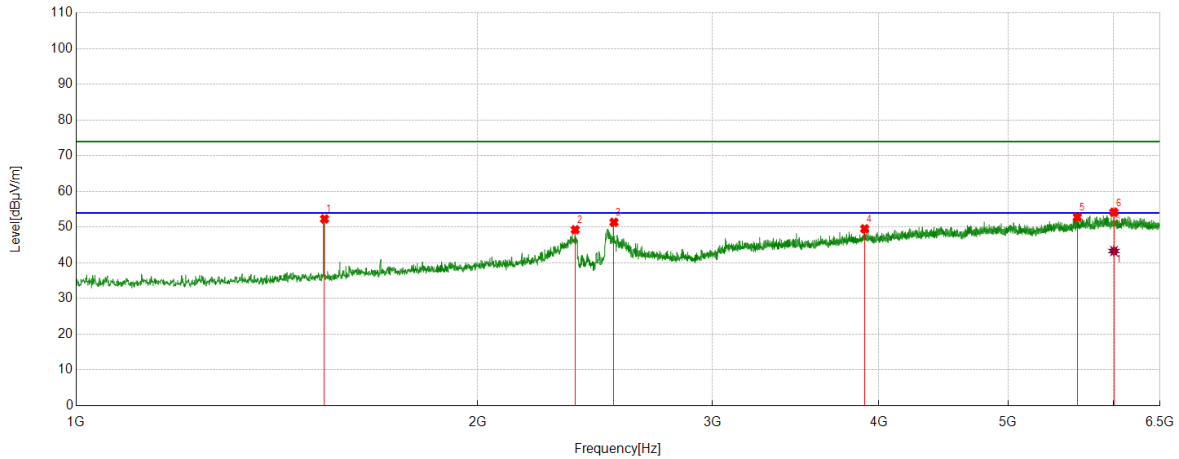


PK Result:

No.	Frequency	Reading Level	Correct Factor	Result	Limit	Margin	Remark
	[MHz]	[dBuV]	[dB/m]	[dBuV/m]	[dBuV/m]	[dB]	
1	1535.6295	50.07	-0.62	49.45	74.00	-24.55	Vertical
2	2294.7243	40.46	4.26	44.72	74.00	-29.28	Vertical
3	3249.7812	39.61	9.41	49.02	74.00	-24.98	Vertical
4	4917.1771	36.38	15.34	51.72	74.00	-22.28	Vertical
5	5425.9907	34.32	17.40	51.72	74.00	-22.28	Vertical
6	5911.4264	34.40	18.25	52.65	74.00	-21.35	Vertical

- Note: 1. Measurement = Reading Level + Correct Factor,
Correct Factor = Antenna Factor + Loss (Cable + Filter) – Amplifier Gain.
2. If Peak Result complies with AV limit, AV Result is deemed to comply with AV limit.
3. Test setup: RBW: 1 MHz, VBW: 3 MHz, Sweep time: auto.
4. Peak: Peak detector.
5. For below 3GHz part, filter losses were only considered in the spurious frequency bands and the authorized band was not corrected for Band Reject Filter losses.
6. Only the worst case emission was recorded, if it complies with the limit, the other emissions deemed to comply with the limit.

Test Mode	Channel	Polarization	Verdict
11AX HE40	LCH	Horizontal	PASS



PK Result:

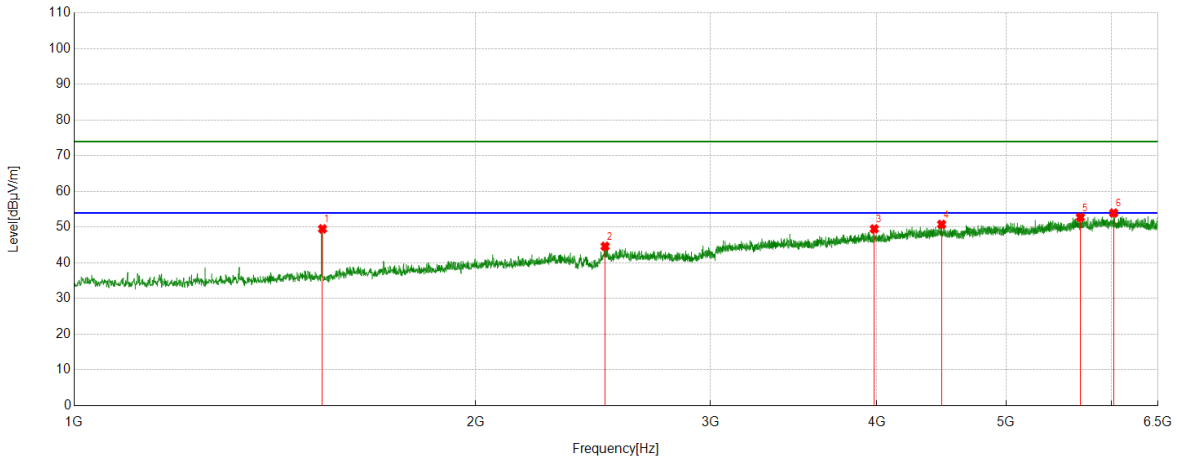
No.	Frequency	Reading Level	Correct Factor	Result	Limit	Margin	Remark
	[MHz]	[dBuV]	[dB/m]	[dBuV/m]	[dBuV/m]	[dB]	
1	1535.6295	52.93	-0.62	52.31	74.00	-21.69	Horizontal
2	2367.6085	44.49	4.80	49.29	74.00	-24.71	Horizontal
3	2531.2539	45.79	5.58	51.37	74.00	-22.63	Horizontal
4	3902.9879	37.03	12.52	49.55	74.00	-24.45	Horizontal
5	5635.0169	35.19	17.61	52.80	74.00	-21.20	Horizontal
6	6002.8754	35.96	18.22	54.18	74.00	-19.82	Horizontal

AV Result:

No.	Frequency	Reading Level	Correct Factor	Result	Limit	Margin	Remark
	[MHz]	[dBuV]	[dB/m]	[dBuV/m]	[dBuV/m]	[dB]	
1	6002.8754	25.10	18.22	43.32	54.00	-10.68	Horizontal

- Note: 1. Measurement = Reading Level + Correct Factor,
Correct Factor = Antenna Factor + Loss (Cable + Filter) – Amplifier Gain.
2. If Peak Result complies with AV limit, AV Result is deemed to comply with AV limit.
3. Test setup: RBW: 1 MHz, VBW: 3 MHz, Sweep time: auto.
4. Peak: Peak detector.
5. For below 3GHz part, filter losses were only considered in the spurious frequency bands and the authorized band was not corrected for Band Reject Filter losses.
6. Only the worst case emission was recorded, if it complies with the limit, the other emissions deemed to comply with the limit.

Test Mode	Channel	Polarization	Verdict
11AX HE40	LCH	Vertical	PASS

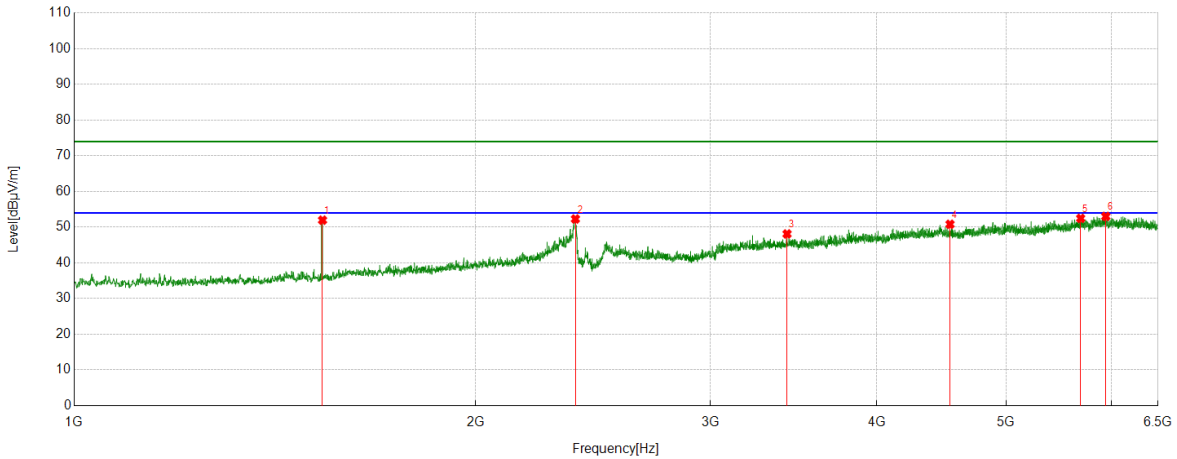


PK Result:

No.	Frequency	Reading Level	Correct Factor	Result	Limit	Margin	Remark
	[MHz]	[dBuV]	[dB/m]	[dBuV/m]	[dBuV/m]	[dB]	
1	1535.6295	50.15	-0.62	49.53	74.00	-24.47	Vertical
2	2501.6877	38.76	5.88	44.64	74.00	-29.36	Vertical
3	3982.0603	37.18	12.34	49.52	74.00	-24.48	Vertical
4	4472.9966	36.30	14.49	50.79	74.00	-23.21	Vertical
5	5684.5231	35.35	17.42	52.77	74.00	-21.23	Vertical
6	6020.7526	36.01	17.96	53.97	74.00	-20.03	Vertical

- Note: 1. Measurement = Reading Level + Correct Factor,
Correct Factor = Antenna Factor + Loss (Cable + Filter) – Amplifier Gain.
2. If Peak Result complies with AV limit, AV Result is deemed to comply with AV limit.
3. Test setup: RBW: 1 MHz, VBW: 3 MHz, Sweep time: auto.
4. Peak: Peak detector.
5. For below 3GHz part, filter losses were only considered in the spurious frequency bands and the authorized band was not corrected for Band Reject Filter losses.
6. Only the worst case emission was recorded, if it complies with the limit, the other emissions deemed to comply with the limit.

Test Mode	Channel	Polarization	Verdict
11AX HE40	MCH	Horizontal	PASS

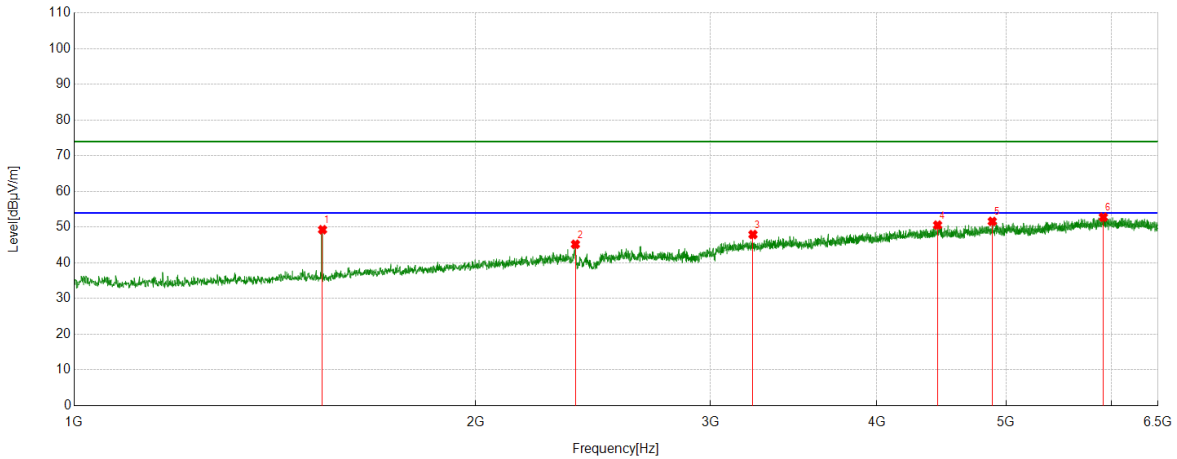


PK Result:

No.	Frequency	Reading Level	Correct Factor	Result	Limit	Margin	Remark
	[MHz]	[dBuV]	[dB/m]	[dBuV/m]	[dBuV/m]	[dB]	
1	1535.6295	52.59	-0.62	51.97	74.00	-22.03	Horizontal
2	2376.5471	47.47	4.83	52.30	74.00	-21.70	Horizontal
3	3425.1156	37.68	10.43	48.11	74.00	-25.89	Horizontal
4	4538.3173	37.08	13.73	50.81	74.00	-23.19	Horizontal
5	5687.2734	35.07	17.40	52.47	74.00	-21.53	Horizontal
6	5939.6175	34.57	18.45	53.02	74.00	-20.98	Horizontal

- Note: 1. Measurement = Reading Level + Correct Factor,
Correct Factor = Antenna Factor + Loss (Cable + Filter) – Amplifier Gain.
2. If Peak Result complies with AV limit, AV Result is deemed to comply with AV limit.
3. Test setup: RBW: 1 MHz, VBW: 3 MHz, Sweep time: auto.
4. Peak: Peak detector.
5. For below 3GHz part, filter losses were only considered in the spurious frequency bands and the authorized band was not corrected for Band Reject Filter losses.
6. Only the worst case emission was recorded, if it complies with the limit, the other emissions deemed to comply with the limit.

Test Mode	Channel	Polarization	Verdict
11AX HE40	MCH	Vertical	PASS

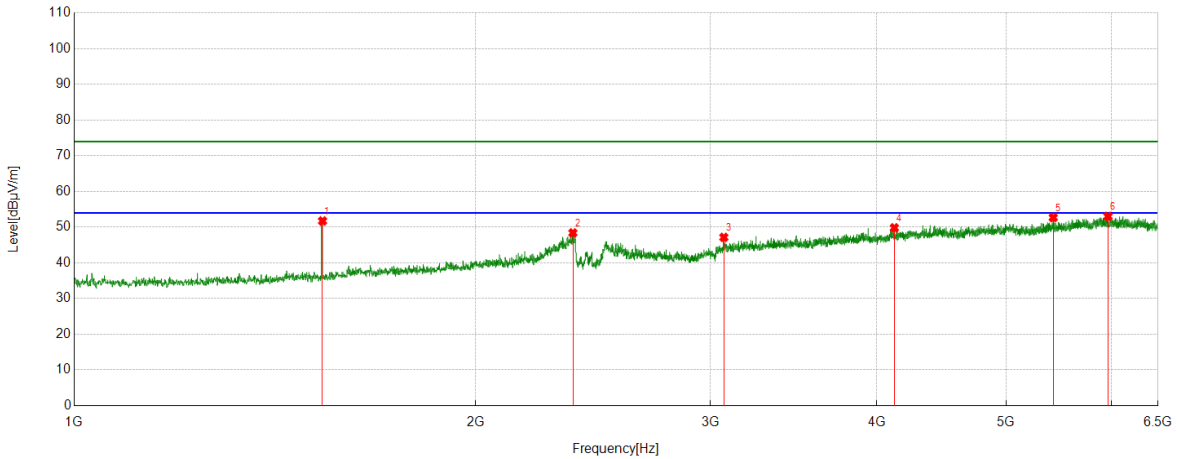


PK Result:

No.	Frequency	Reading Level	Correct Factor	Result	Limit	Margin	Remark
	[MHz]	[dBuV]	[dB/m]	[dBuV/m]	[dBuV/m]	[dB]	
1	1535.6295	49.91	-0.62	49.29	74.00	-24.71	Vertical
2	2376.5471	40.38	4.83	45.21	74.00	-28.79	Vertical
3	3229.1536	38.85	9.09	47.94	74.00	-26.06	Vertical
4	4442.0553	35.95	14.63	50.58	74.00	-23.42	Vertical
5	4882.1103	36.45	15.17	51.62	74.00	-22.38	Vertical
6	5914.1768	34.41	18.39	52.80	74.00	-21.20	Vertical

- Note: 1. Measurement = Reading Level + Correct Factor,
Correct Factor = Antenna Factor + Loss (Cable + Filter) – Amplifier Gain.
2. If Peak Result complies with AV limit, AV Result is deemed to comply with AV limit.
3. Test setup: RBW: 1 MHz, VBW: 3 MHz, Sweep time: auto.
4. Peak: Peak detector.
5. For below 3GHz part, filter losses were only considered in the spurious frequency bands and the authorized band was not corrected for Band Reject Filter losses.
6. Only the worst case emission was recorded, if it complies with the limit, the other emissions deemed to comply with the limit.

Test Mode	Channel	Polarization	Verdict
11AX HE40	HCH	Horizontal	PASS

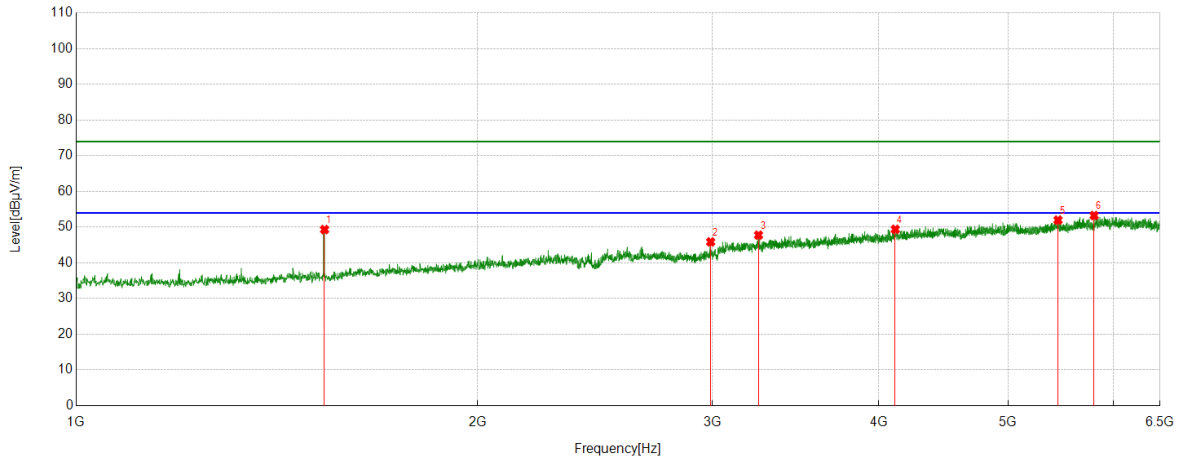


PK Result:

No.	Frequency	Reading Level	Correct Factor	Result	Limit	Margin	Remark
	[MHz]	[dBuV]	[dB/m]	[dBuV/m]	[dBuV/m]	[dB]	
1	1535.6295	52.36	-0.62	51.74	74.00	-22.26	Horizontal
2	2366.2333	43.60	4.80	48.40	74.00	-25.60	Horizontal
3	3071.0089	37.95	9.20	47.15	74.00	-26.85	Horizontal
4	4122.3278	36.03	13.79	49.82	74.00	-24.18	Horizontal
5	5423.9280	35.38	17.30	52.68	74.00	-21.32	Horizontal
6	5961.6202	34.58	18.44	53.02	74.00	-20.98	Horizontal

- Note: 1. Measurement = Reading Level + Correct Factor,
Correct Factor = Antenna Factor + Loss (Cable + Filter) – Amplifier Gain.
2. If Peak Result complies with AV limit, AV Result is deemed to comply with AV limit.
3. Test setup: RBW: 1 MHz, VBW: 3 MHz, Sweep time: auto.
4. Peak: Peak detector.
5. For below 3GHz part, filter losses were only considered in the spurious frequency bands and the authorized band was not corrected for Band Reject Filter losses.
6. Only the worst case emission was recorded, if it complies with the limit, the other emissions deemed to comply with the limit.

Test Mode	Channel	Polarization	Verdict
11AX HE40	HCH	Vertical	PASS



PK Result:

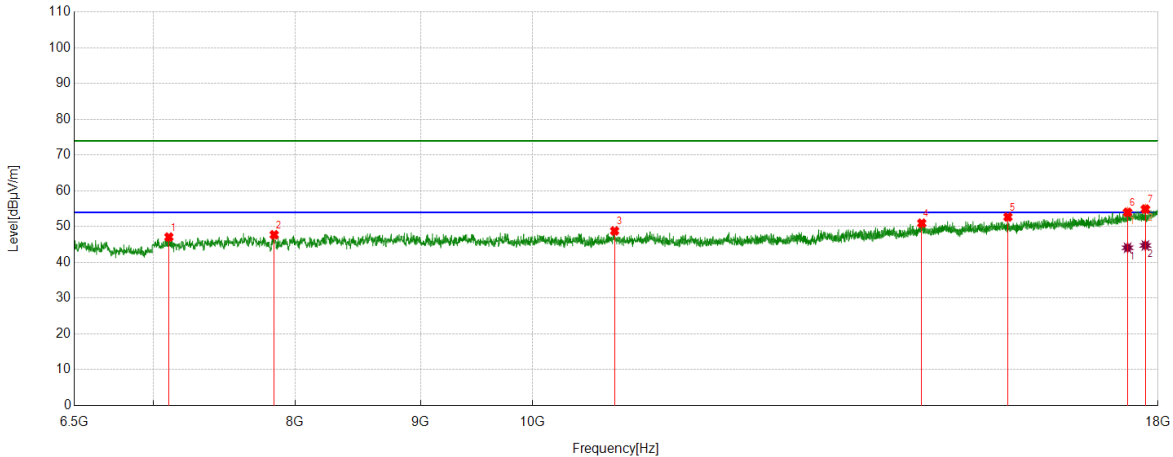
No.	Frequency	Reading Level	Correct Factor	Result	Limit	Margin	Remark
	[MHz]	[dBuV]	[dB/m]	[dBuV/m]	[dBuV/m]	[dB]	
1	1535.6295	49.95	-0.62	49.33	74.00	-24.67	Vertical
2	2991.2489	37.82	8.06	45.88	74.00	-28.12	Vertical
3	3249.0936	38.39	9.39	47.78	74.00	-26.22	Vertical
4	4114.7643	35.91	13.49	49.40	74.00	-24.60	Vertical
5	5450.0563	34.35	17.64	51.99	74.00	-22.01	Vertical
6	5800.7251	35.54	17.72	53.26	74.00	-20.74	Vertical

- Note: 1. Measurement = Reading Level + Correct Factor,
Correct Factor = Antenna Factor + Loss (Cable + Filter) – Amplifier Gain.
2. If Peak Result complies with AV limit, AV Result is deemed to comply with AV limit.
3. Test setup: RBW: 1 MHz, VBW: 3 MHz, Sweep time: auto.
4. Peak: Peak detector.
5. For below 3GHz part, filter losses were only considered in the spurious frequency bands and the authorized band was not corrected for Band Reject Filter losses.
6. Only the worst case emission was recorded, if it complies with the limit, the other emissions deemed to comply with the limit.

Part 2: 6.5GHz~18GHz

HARMONICS AND SPURIOUS EMISSIONS

Test Mode	Channel	Polarization	Verdict
11B	LCH	Horizontal	PASS



PK Result:

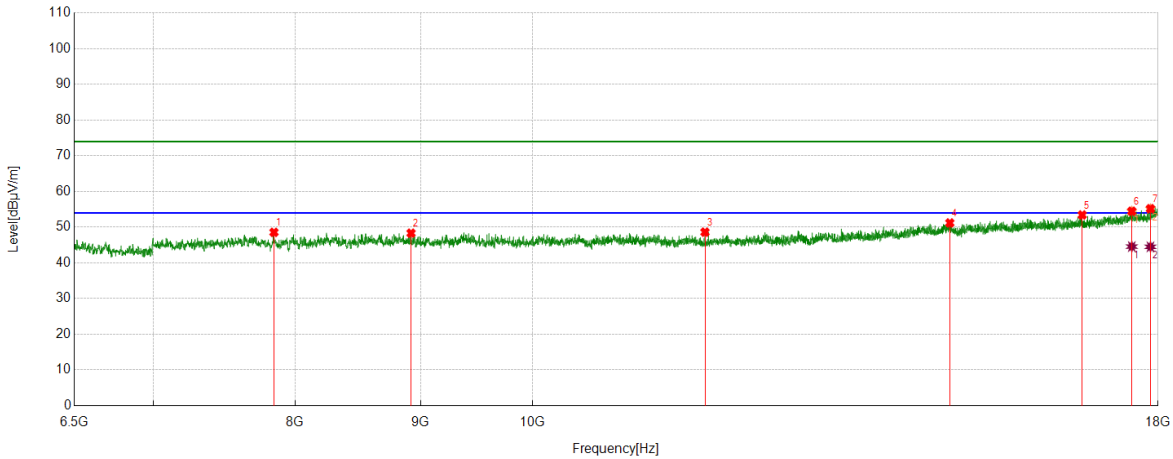
No.	Frequency	Reading Level	Correct Factor	Result	Limit	Margin	Remark
	[MHz]	[dBuV]	[dB/m]	[dBuV/m]	[dBuV/m]	[dB]	
1	7105.2632	43.20	3.89	47.09	74.00	-26.91	Horizontal
2	7844.2305	42.35	5.38	47.73	74.00	-26.27	Horizontal
3	10801.5377	41.80	7.01	48.81	74.00	-25.19	Horizontal
4	14415.8645	38.06	12.91	50.97	74.00	-23.03	Horizontal
5	15632.1415	39.03	13.67	52.70	74.00	-21.30	Horizontal
6	17492.4991	36.37	17.64	54.01	74.00	-19.99	Horizontal
7	17787.2234	36.20	18.72	54.92	74.00	-19.08	Horizontal

AV Result:

No.	Frequency	Reading Level	Correct Factor	Result	Limit	Margin	Remark
	[MHz]	[dBuV]	[dB/m]	[dBuV/m]	[dBuV/m]	[dB]	
1	17492.4991	26.46	17.64	44.10	54.00	-9.90	Horizontal
2	17787.2234	26.03	18.72	44.75	54.00	-9.25	Horizontal

- Note: 1. Measurement = Reading Level + Correct Factor,
Correct Factor = Antenna Factor + Loss (Cable + Filter) – Amplifier Gain.
2. If Peak Result complies with AV limit, AV Result is deemed to comply with AV limit.
 3. Peak detector: RBW: 1 MHz, VBW: 3 MHz.
 4. Average detector: RBW: 1 MHz, VBW: 1/T MHz(refer to clause 7.1.).
 5. For above 3GHz part, filter losses were only considered in the spurious frequency bands and the authorized band was not corrected for HPF losses.
 6. Only the worst case emission was recorded, if it complies with the limit, the other emissions deemed to comply with the limit.

Test Mode	Channel	Polarization	Verdict
11B	LCH	Vertical	PASS



PK Result:

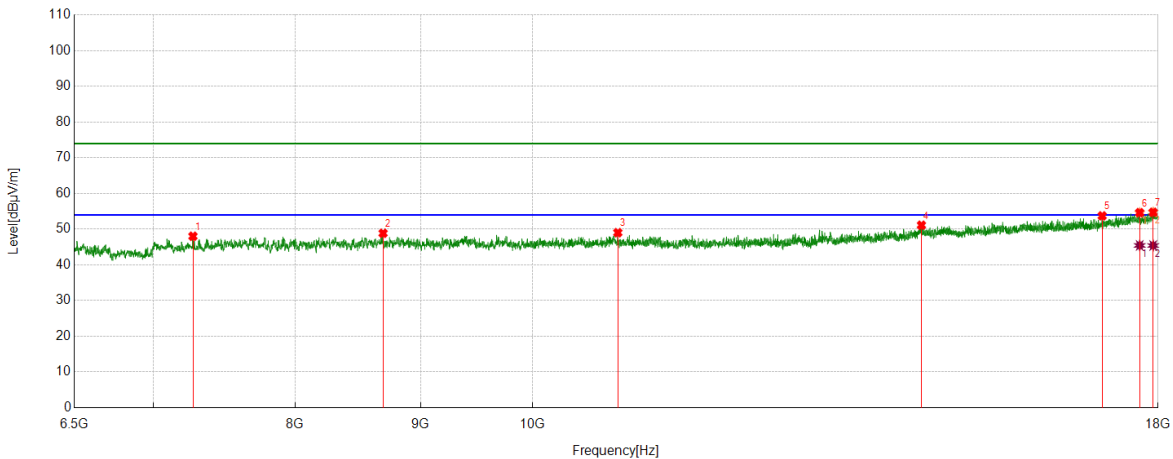
No.	Frequency	Reading Level	Correct Factor	Result	Limit	Margin	Remark
	[MHz]	[dBuV]	[dB/m]	[dBuV/m]	[dBuV/m]	[dB]	
1	7842.7928	43.20	5.36	48.56	74.00	-25.44	Vertical
2	8921.0526	42.08	6.24	48.32	74.00	-25.68	Vertical
3	11759.0324	40.83	7.78	48.61	74.00	-25.39	Vertical
4	14801.1626	38.36	12.83	51.19	74.00	-22.81	Vertical
5	16762.1578	37.37	16.05	53.42	74.00	-20.58	Vertical
6	17561.5077	36.67	17.79	54.46	74.00	-19.54	Vertical
7	17872.0465	35.98	19.20	55.18	74.00	-18.82	Vertical

AV Result:

No.	Frequency	Reading Level	Correct Factor	Result	Limit	Margin	Remark
	[MHz]	[dBuV]	[dB/m]	[dBuV/m]	[dBuV/m]	[dB]	
1	17561.5077	26.77	17.79	44.56	54.00	-9.44	Vertical
2	17872.0465	25.30	19.20	44.50	54.00	-9.50	Vertical

- Note: 1. Measurement = Reading Level + Correct Factor,
Correct Factor = Antenna Factor + Loss (Cable + Filter) – Amplifier Gain.
- If Peak Result complies with AV limit, AV Result is deemed to comply with AV limit.
 - Peak detector: RBW: 1 MHz, VBW: 3 MHz.
 - Average detector: RBW: 1 MHz, VBW: 1/T MHz(refer to clause 7.1.).
 - For above 3GHz part, filter losses were only considered in the spurious frequency bands and the authorized band was not corrected for HPF losses.
 - Only the worst case emission was recorded, if it complies with the limit, the other emissions deemed to comply with the limit.

Test Mode	Channel	Polarization	Verdict
11B	MCH	Horizontal	PASS


PK Result:

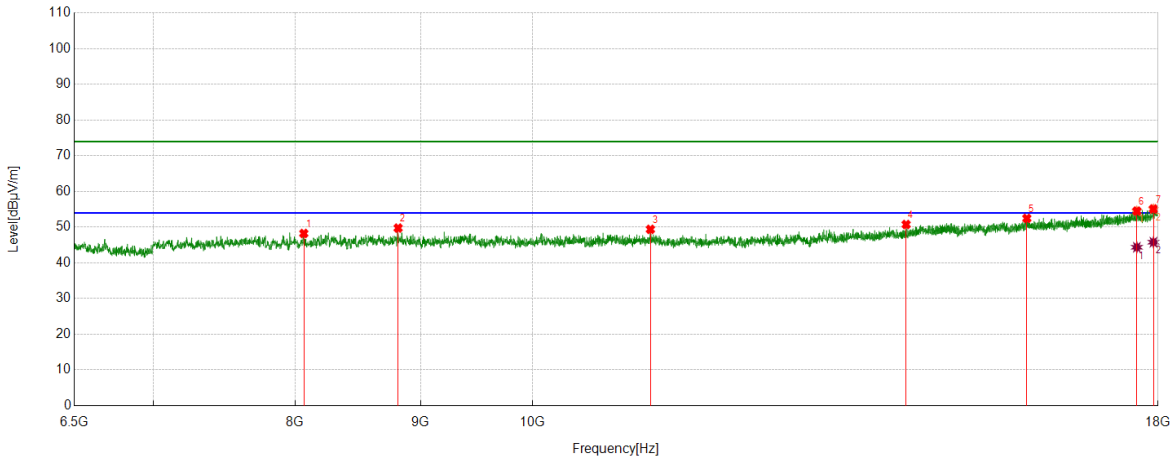
No.	Frequency	Reading Level	Correct Factor	Result	Limit	Margin	Remark
	[MHz]	[dBuV]	[dB/m]	[dBuV/m]	[dBuV/m]	[dB]	
1	7267.7210	44.25	3.77	48.02	74.00	-25.98	Horizontal
2	8689.5862	42.62	6.24	48.86	74.00	-25.14	Horizontal
3	10834.6043	41.97	7.05	49.02	74.00	-24.98	Horizontal
4	14411.5514	38.23	12.89	51.12	74.00	-22.88	Horizontal
5	17079.8850	37.37	16.36	53.73	74.00	-20.27	Horizontal
6	17692.3365	36.42	18.20	54.62	74.00	-19.38	Horizontal
7	17918.0523	35.40	19.33	54.73	74.00	-19.27	Horizontal

AV Result:

No.	Frequency	Reading Level	Correct Factor	Result	Limit	Margin	Remark
	[MHz]	[dBuV]	[dB/m]	[dBuV/m]	[dBuV/m]	[dB]	
1	17692.3365	27.25	18.20	45.45	54.00	-8.55	Horizontal
2	17918.0523	26.09	19.33	45.42	54.00	-8.58	Horizontal

- Note: 1. Measurement = Reading Level + Correct Factor,
 Correct Factor = Antenna Factor + Loss (Cable + Filter) – Amplifier Gain.
- If Peak Result complies with AV limit, AV Result is deemed to comply with AV limit.
 - Peak detector: RBW: 1 MHz, VBW: 3 MHz.
 - Average detector: RBW: 1 MHz, VBW: 1/T MHz(refer to clause 7.1.).
 - For above 3GHz part, filter losses were only considered in the spurious frequency bands and the authorized band was not corrected for HPF losses.
 - Only the worst case emission was recorded, if it complies with the limit, the other emissions deemed to comply with the limit.

Test Mode	Channel	Polarization	Verdict
11B	MCH	Vertical	PASS



PK Result:

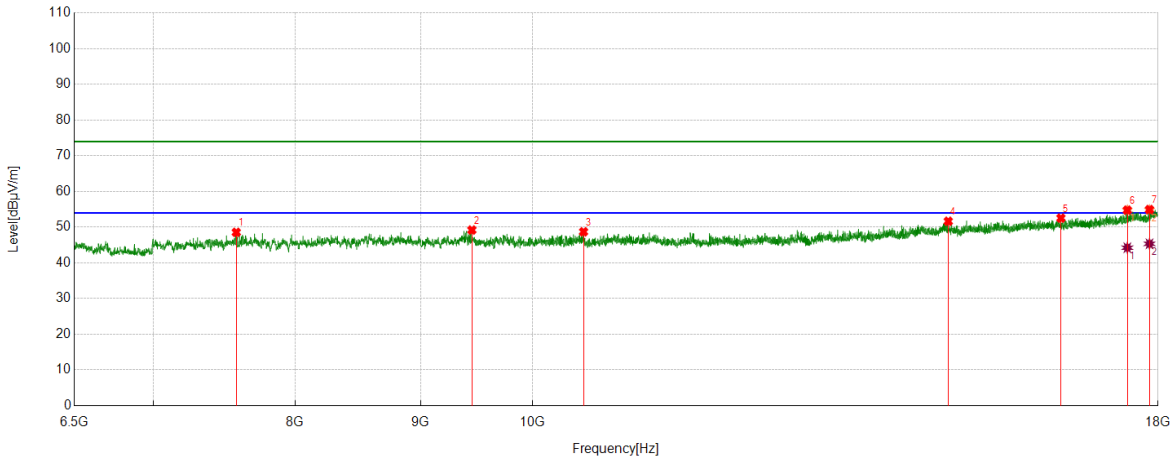
No.	Frequency	Reading Level	Correct Factor	Result	Limit	Margin	Remark
	[MHz]	[dBuV]	[dB/m]	[dBuV/m]	[dBuV/m]	[dB]	
1	8065.6332	42.69	5.55	48.24	74.00	-25.76	Vertical
2	8813.2267	43.46	6.29	49.75	74.00	-24.25	Vertical
3	11171.0214	42.11	7.29	49.40	74.00	-24.60	Vertical
4	14205.9632	38.82	11.93	50.75	74.00	-23.25	Vertical
5	15912.4891	37.90	14.57	52.47	74.00	-21.53	Vertical
6	17644.8931	36.50	18.01	54.51	74.00	-19.49	Vertical
7	17922.3653	35.74	19.37	55.11	74.00	-18.89	Vertical

AV Result:

No.	Frequency	Reading Level	Correct Factor	Result	Limit	Margin	Remark
	[MHz]	[dBuV]	[dB/m]	[dBuV/m]	[dBuV/m]	[dB]	
1	17644.8931	26.36	18.01	44.37	54.00	-9.63	Vertical
2	17922.3653	26.42	19.37	45.79	54.00	-8.21	Vertical

- Note: 1. Measurement = Reading Level + Correct Factor,
Correct Factor = Antenna Factor + Loss (Cable + Filter) – Amplifier Gain.
- If Peak Result complies with AV limit, AV Result is deemed to comply with AV limit.
 - Peak detector: RBW: 1 MHz, VBW: 3 MHz.
 - Average detector: RBW: 1 MHz, VBW: 1/T MHz(refer to clause 7.1.).
 - For above 3GHz part, filter losses were only considered in the spurious frequency bands and the authorized band was not corrected for HPF losses.
 - Only the worst case emission was recorded, if it complies with the limit, the other emissions deemed to comply with the limit.

Test Mode	Channel	Polarization	Verdict
11B	HCH	Horizontal	PASS



PK Result:

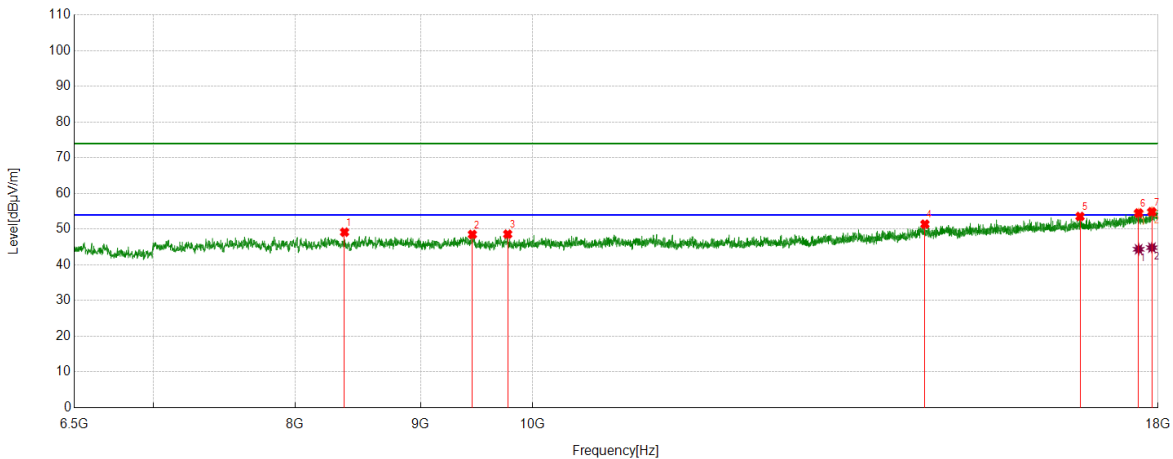
No.	Frequency	Reading Level	Correct Factor	Result	Limit	Margin	Remark
	[MHz]	[dBuV]	[dB/m]	[dBuV/m]	[dBuV/m]	[dB]	
1	7569.6337	43.70	4.86	48.56	74.00	-25.44	Horizontal
2	9445.8057	42.60	6.60	49.20	74.00	-24.80	Horizontal
3	10490.9989	41.80	6.91	48.71	74.00	-25.29	Horizontal
4	14779.5974	38.81	12.84	51.65	74.00	-22.35	Horizontal
5	16430.0538	37.11	15.43	52.54	74.00	-21.46	Horizontal
6	17488.1860	37.12	17.65	54.77	74.00	-19.23	Horizontal
7	17856.2320	35.71	19.22	54.93	74.00	-19.07	Horizontal

AV Result:

No.	Frequency	Reading Level	Correct Factor	Result	Limit	Margin	Remark
	[MHz]	[dBuV]	[dB/m]	[dBuV/m]	[dBuV/m]	[dB]	
1	17488.1860	26.60	17.65	44.25	54.00	-9.75	Horizontal
2	17856.2320	26.12	19.22	45.34	54.00	-8.66	Horizontal

- Note: 1. Measurement = Reading Level + Correct Factor,
Correct Factor = Antenna Factor + Loss (Cable + Filter) – Amplifier Gain.
- If Peak Result complies with AV limit, AV Result is deemed to comply with AV limit.
 - Peak detector: RBW: 1 MHz, VBW: 3 MHz.
 - Average detector: RBW: 1 MHz, VBW: 1/T MHz(refer to clause 7.1.).
 - For above 3GHz part, filter losses were only considered in the spurious frequency bands and the authorized band was not corrected for HPF losses.
 - Only the worst case emission was recorded, if it complies with the limit, the other emissions deemed to comply with the limit.

Test Mode	Channel	Polarization	Verdict
11B	HCH	Vertical	PASS



PK Result:

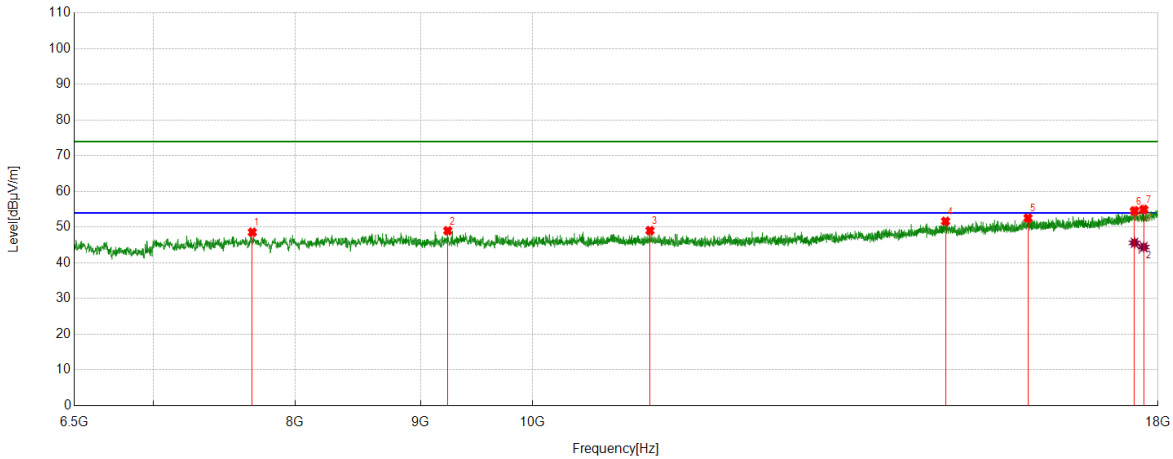
No.	Frequency	Reading Level	Correct Factor	Result	Limit	Margin	Remark
	[MHz]	[dBuV]	[dB/m]	[dBuV/m]	[dBuV/m]	[dB]	
1	8380.4851	43.41	5.75	49.16	74.00	-24.84	Vertical
2	9450.1188	41.92	6.60	48.52	74.00	-25.48	Vertical
3	9769.2837	42.15	6.45	48.60	74.00	-25.40	Vertical
4	14458.9949	38.57	12.83	51.40	74.00	-22.60	Vertical
5	16727.6535	37.37	16.19	53.56	74.00	-20.44	Vertical
6	17675.0844	36.42	18.10	54.52	74.00	-19.48	Vertical
7	17896.4871	35.64	19.23	54.87	74.00	-19.13	Vertical

AV Result:

No.	Frequency	Reading Level	Correct Factor	Result	Limit	Margin	Remark
	[MHz]	[dBuV]	[dB/m]	[dBuV/m]	[dBuV/m]	[dB]	
1	17675.0844	26.27	18.10	44.37	54.00	-9.63	Vertical
2	17896.4871	25.60	19.23	44.83	54.00	-9.17	Vertical

- Note: 1. Measurement = Reading Level + Correct Factor,
Correct Factor = Antenna Factor + Loss (Cable + Filter) – Amplifier Gain.
- If Peak Result complies with AV limit, AV Result is deemed to comply with AV limit.
 - Peak detector: RBW: 1 MHz, VBW: 3 MHz.
 - Average detector: RBW: 1 MHz, VBW: 1/T MHz(refer to clause 7.1.).
 - For above 3GHz part, filter losses were only considered in the spurious frequency bands and the authorized band was not corrected for HPF losses.
 - Only the worst case emission was recorded, if it complies with the limit, the other emissions deemed to comply with the limit.

Test Mode	Channel	Polarization	Verdict
11G	LCH	Horizontal	PASS



PK Result:

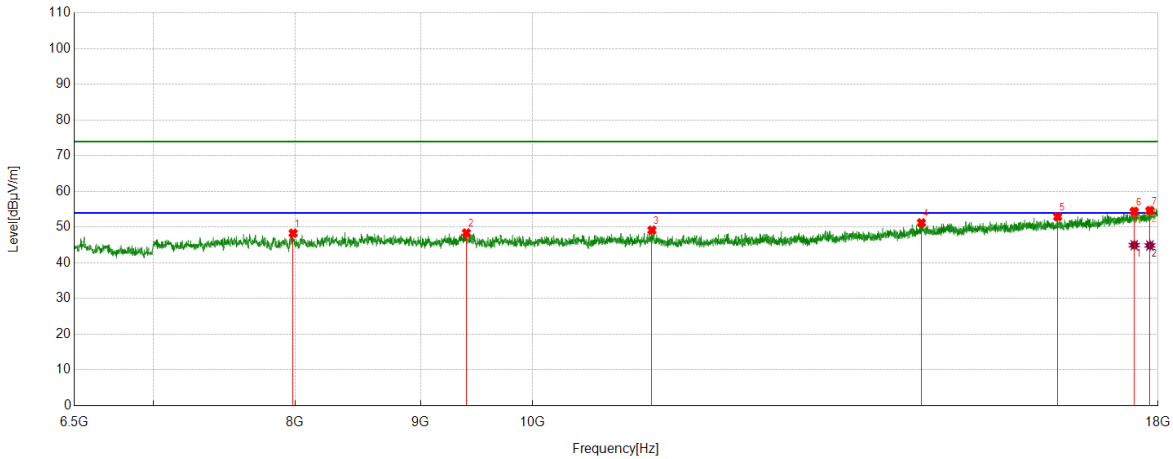
No.	Frequency	Reading Level	Correct Factor	Result	Limit	Margin	Remark
	[MHz]	[dBuV]	[dB/m]	[dBuV/m]	[dBuV/m]	[dB]	
1	7684.6481	43.34	5.24	48.58	74.00	-25.42	Horizontal
2	9234.4668	42.93	6.07	49.00	74.00	-25.00	Horizontal
3	11166.7083	41.80	7.25	49.05	74.00	-24.95	Horizontal
4	14742.2178	38.77	12.89	51.66	74.00	-22.34	Horizontal
5	15929.7412	37.91	14.64	52.55	74.00	-21.45	Horizontal
6	17606.0758	36.53	18.05	54.58	74.00	-19.42	Horizontal
7	17759.9075	36.48	18.49	54.97	74.00	-19.03	Horizontal

AV Result:

No.	Frequency	Reading Level	Correct Factor	Result	Limit	Margin	Remark
	[MHz]	[dBuV]	[dB/m]	[dBuV/m]	[dBuV/m]	[dB]	
1	17606.0758	27.56	18.05	45.61	54.00	-8.39	Horizontal
2	17759.9075	25.94	18.49	44.43	54.00	-9.57	Horizontal

- Note: 1. Measurement = Reading Level + Correct Factor,
Correct Factor = Antenna Factor + Loss (Cable + Filter) – Amplifier Gain.
- If Peak Result complies with AV limit, AV Result is deemed to comply with AV limit.
 - Peak detector: RBW: 1 MHz, VBW: 3 MHz.
 - Average detector: RBW: 1 MHz, VBW: 1/T MHz(refer to clause 7.1.).
 - For above 3GHz part, filter losses were only considered in the spurious frequency bands and the authorized band was not corrected for HPF losses.
 - Only the worst case emission was recorded, if it complies with the limit, the other emissions deemed to comply with the limit.

Test Mode	Channel	Polarization	Verdict
11G	LCH	Vertical	PASS



PK Result:

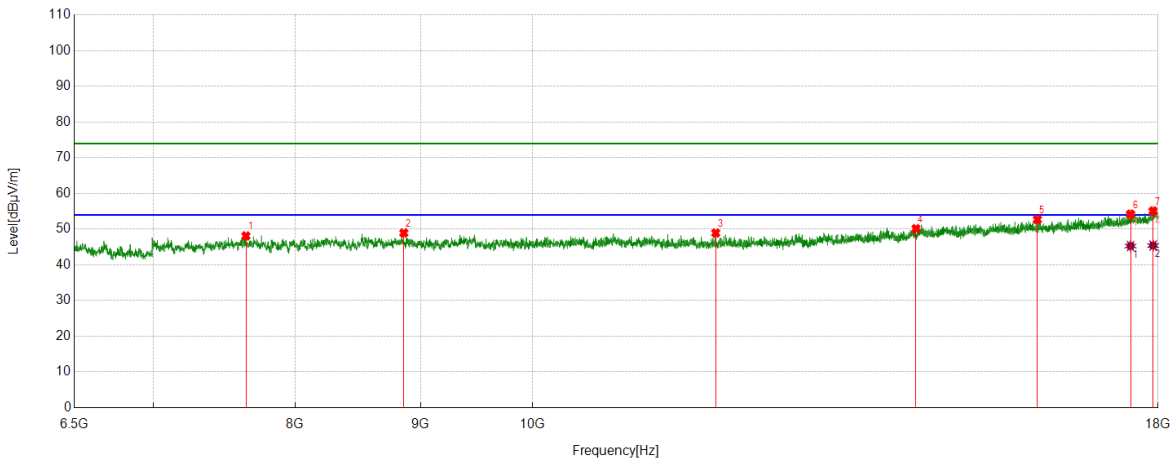
No.	Frequency	Reading Level	Correct Factor	Result	Limit	Margin	Remark
	[MHz]	[dBuV]	[dB/m]	[dBuV/m]	[dBuV/m]	[dB]	
1	7985.1231	42.81	5.49	48.30	74.00	-25.70	Vertical
2	9396.9246	41.79	6.59	48.38	74.00	-25.62	Vertical
3	11186.8359	41.88	7.28	49.16	74.00	-24.84	Vertical
4	14411.5514	38.33	12.89	51.22	74.00	-22.78	Vertical
5	16379.7350	37.86	15.09	52.95	74.00	-21.05	Vertical
6	17601.7627	36.38	18.03	54.41	74.00	-19.59	Vertical
7	17863.4204	35.40	19.25	54.65	74.00	-19.35	Vertical

AV Result:

No.	Frequency	Reading Level	Correct Factor	Result	Limit	Margin	Remark
	[MHz]	[dBuV]	[dB/m]	[dBuV/m]	[dBuV/m]	[dB]	
1	17601.7627	26.93	18.03	44.96	54.00	-9.04	Vertical
2	17863.4204	25.63	19.25	44.88	54.00	-9.12	Vertical

- Note: 1. Measurement = Reading Level + Correct Factor,
Correct Factor = Antenna Factor + Loss (Cable + Filter) – Amplifier Gain.
- If Peak Result complies with AV limit, AV Result is deemed to comply with AV limit.
 - Peak detector: RBW: 1 MHz, VBW: 3 MHz.
 - Average detector: RBW: 1 MHz, VBW: 1/T MHz(refer to clause 7.1.).
 - For above 3GHz part, filter losses were only considered in the spurious frequency bands and the authorized band was not corrected for HPF losses.
 - Only the worst case emission was recorded, if it complies with the limit, the other emissions deemed to comply with the limit.

Test Mode	Channel	Polarization	Verdict
11G	MCH	Horizontal	PASS


PK Result:

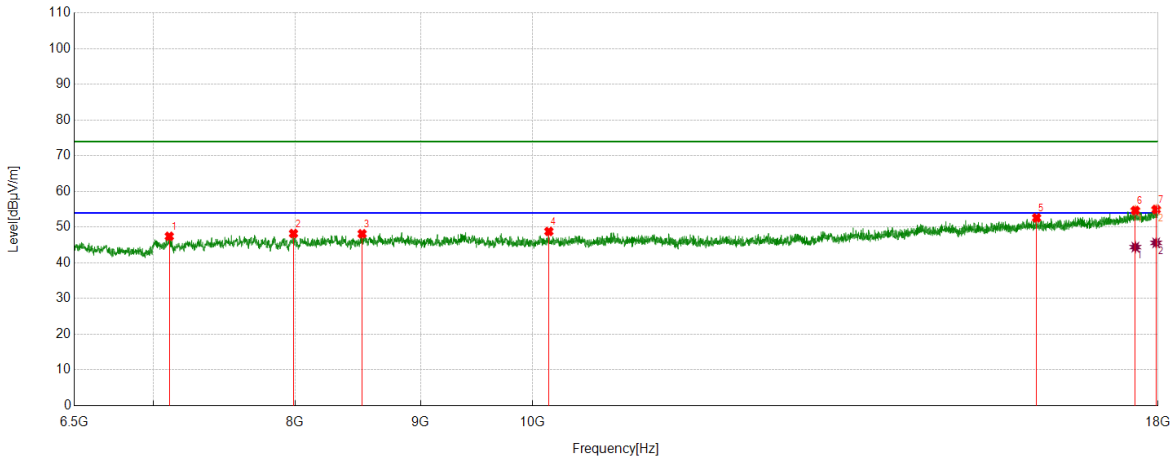
No.	Frequency	Reading Level	Correct Factor	Result	Limit	Margin	Remark
	[MHz]	[dBuV]	[dB/m]	[dBuV/m]	[dBuV/m]	[dB]	
1	7638.6423	42.94	5.17	48.11	74.00	-25.89	Horizontal
2	8860.6701	42.75	6.18	48.93	74.00	-25.07	Horizontal
3	11878.3598	41.03	7.91	48.94	74.00	-25.06	Horizontal
4	14338.2298	37.59	12.55	50.14	74.00	-23.86	Horizontal
5	16070.6338	38.14	14.57	52.71	74.00	-21.29	Horizontal
6	17541.3802	36.49	17.70	54.19	74.00	-19.81	Horizontal
7	17916.6146	35.77	19.32	55.09	74.00	-18.91	Horizontal

AV Result:

No.	Frequency	Reading Level	Correct Factor	Result	Limit	Margin	Remark
	[MHz]	[dBuV]	[dB/m]	[dBuV/m]	[dBuV/m]	[dB]	
1	17541.3802	27.59	17.70	45.29	54.00	-8.71	Horizontal
2	17916.6146	26.10	19.32	45.42	54.00	-8.58	Horizontal

- Note: 1. Measurement = Reading Level + Correct Factor,
 Correct Factor = Antenna Factor + Loss (Cable + Filter) – Amplifier Gain.
- If Peak Result complies with AV limit, AV Result is deemed to comply with AV limit.
 - Peak detector: RBW: 1 MHz, VBW: 3 MHz.
 - Average detector: RBW: 1 MHz, VBW: 1/T MHz(refer to clause 7.1.).
 - For above 3GHz part, filter losses were only considered in the spurious frequency bands and the authorized band was not corrected for HPF losses.
 - Only the worst case emission was recorded, if it complies with the limit, the other emissions deemed to comply with the limit.

Test Mode	Channel	Polarization	Verdict
11G	MCH	Vertical	PASS



PK Result:

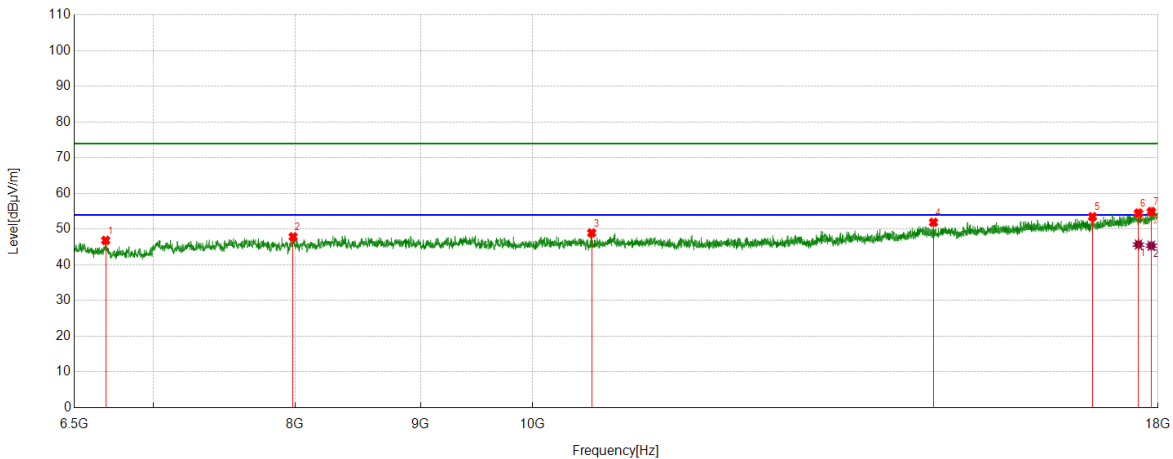
No.	Frequency	Reading Level	Correct Factor	Result	Limit	Margin	Remark
	[MHz]	[dBuV]	[dB/m]	[dBuV/m]	[dBuV/m]	[dB]	
1	7108.1385	43.55	3.89	47.44	74.00	-26.56	Vertical
2	7987.9985	42.66	5.56	48.22	74.00	-25.78	Vertical
3	8519.9400	41.61	6.54	48.15	74.00	-25.85	Vertical
4	10154.5818	42.23	6.57	48.80	74.00	-25.20	Vertical
5	16059.1324	38.08	14.53	52.61	74.00	-21.39	Vertical
6	17620.4526	36.61	18.07	54.68	74.00	-19.32	Vertical
7	17968.3710	35.33	19.63	54.96	74.00	-19.04	Vertical

AV Result:

No.	Frequency	Reading Level	Correct Factor	Result	Limit	Margin	Remark
	[MHz]	[dBuV]	[dB/m]	[dBuV/m]	[dBuV/m]	[dB]	
1	17620.4526	26.35	18.07	44.42	54.00	-9.58	Vertical
2	17968.3710	25.98	19.63	45.61	54.00	-8.39	Vertical

- Note: 1. Measurement = Reading Level + Correct Factor,
Correct Factor = Antenna Factor + Loss (Cable + Filter) – Amplifier Gain.
- If Peak Result complies with AV limit, AV Result is deemed to comply with AV limit.
 - Peak detector: RBW: 1 MHz, VBW: 3 MHz.
 - Average detector: RBW: 1 MHz, VBW: 1/T MHz(refer to clause 7.1.).
 - For above 3GHz part, filter losses were only considered in the spurious frequency bands and the authorized band was not corrected for HPF losses.
 - Only the worst case emission was recorded, if it complies with the limit, the other emissions deemed to comply with the limit.

Test Mode	Channel	Polarization	Verdict
11G	HCH	Horizontal	PASS


PK Result:

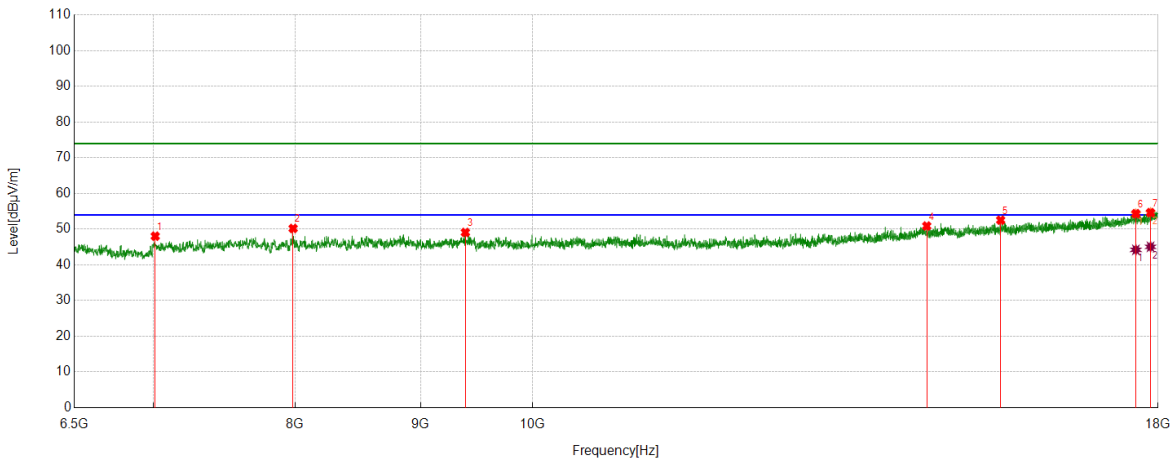
No.	Frequency	Reading Level	Correct Factor	Result	Limit	Margin	Remark
	[MHz]	[dBuV]	[dB/m]	[dBuV/m]	[dBuV/m]	[dB]	
1	6695.5244	43.37	3.49	46.86	74.00	-27.14	Horizontal
2	7985.1231	42.38	5.49	47.87	74.00	-26.13	Horizontal
3	10571.5089	41.89	7.06	48.95	74.00	-25.05	Horizontal
4	14575.4469	39.20	12.71	51.91	74.00	-22.09	Horizontal
5	16924.6156	37.40	16.09	53.49	74.00	-20.51	Horizontal
6	17672.2090	36.41	18.08	54.49	74.00	-19.51	Horizontal
7	17886.4233	35.67	19.26	54.93	74.00	-19.07	Horizontal

AV Result:

No.	Frequency	Reading Level	Correct Factor	Result	Limit	Margin	Remark
	[MHz]	[dBuV]	[dB/m]	[dBuV/m]	[dBuV/m]	[dB]	
1	17672.2090	27.62	18.08	45.70	54.00	-8.30	Horizontal
2	17886.4233	26.09	19.26	45.35	54.00	-8.65	Horizontal

- Note: 1. Measurement = Reading Level + Correct Factor,
 Correct Factor = Antenna Factor + Loss (Cable + Filter) – Amplifier Gain.
- If Peak Result complies with AV limit, AV Result is deemed to comply with AV limit.
 - Peak detector: RBW: 1 MHz, VBW: 3 MHz.
 - Average detector: RBW: 1 MHz, VBW: 1/T MHz(refer to clause 7.1.).
 - For above 3GHz part, filter losses were only considered in the spurious frequency bands and the authorized band was not corrected for HPF losses.
 - Only the worst case emission was recorded, if it complies with the limit, the other emissions deemed to comply with the limit.

Test Mode	Channel	Polarization	Verdict
11G	HCH	Vertical	PASS



PK Result:

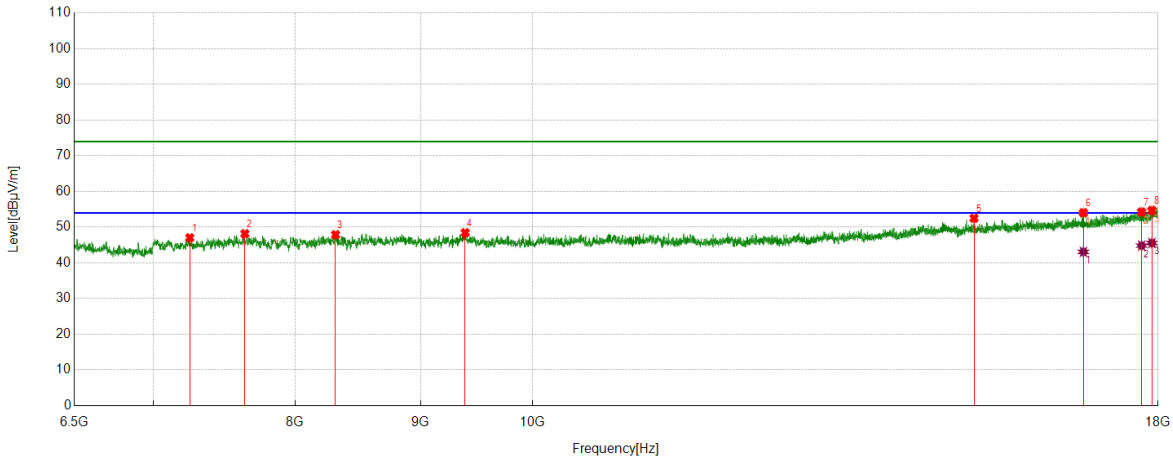
No.	Frequency	Reading Level	Correct Factor	Result	Limit	Margin	Remark
	[MHz]	[dBuV]	[dB/m]	[dBuV/m]	[dBuV/m]	[dB]	
1	7014.6893	44.40	3.64	48.04	74.00	-25.96	Vertical
2	7985.1231	44.71	5.49	50.20	74.00	-23.80	Vertical
3	9388.2985	42.55	6.54	49.09	74.00	-24.91	Vertical
4	14483.4354	38.04	12.85	50.89	74.00	-23.11	Vertical
5	15525.7532	38.72	13.81	52.53	74.00	-21.47	Vertical
6	17629.0786	36.30	18.05	54.35	74.00	-19.65	Vertical
7	17873.4842	35.45	19.19	54.64	74.00	-19.36	Vertical

AV Result:

No.	Frequency	Reading Level	Correct Factor	Result	Limit	Margin	Remark
	[MHz]	[dBuV]	[dB/m]	[dBuV/m]	[dBuV/m]	[dB]	
1	17629.0786	26.17	18.05	44.22	54.00	-9.78	Vertical
2	17873.4842	25.87	19.19	45.06	54.00	-8.94	Vertical

- Note: 1. Measurement = Reading Level + Correct Factor,
Correct Factor = Antenna Factor + Loss (Cable + Filter) – Amplifier Gain.
- If Peak Result complies with AV limit, AV Result is deemed to comply with AV limit.
 - Peak detector: RBW: 1 MHz, VBW: 3 MHz.
 - Average detector: RBW: 1 MHz, VBW: 1/T MHz(refer to clause 7.1.).
 - For above 3GHz part, filter losses were only considered in the spurious frequency bands and the authorized band was not corrected for HPF losses.
 - Only the worst case emission was recorded, if it complies with the limit, the other emissions deemed to comply with the limit.

Test Mode	Channel	Polarization	Verdict
11N HT20	LCH	Horizontal	PASS



PK Result:

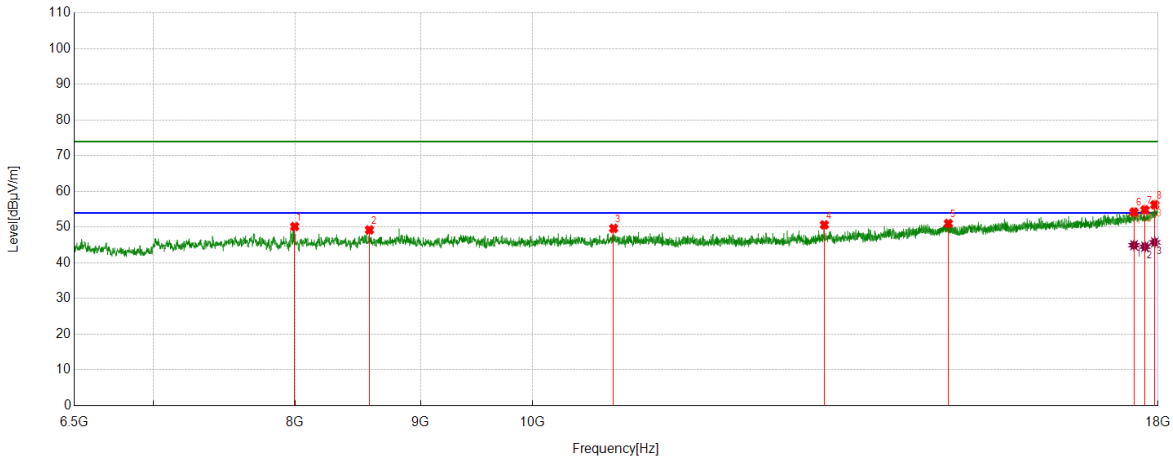
No.	Frequency	Reading Level	Correct Factor	Result	Limit	Margin	Remark
	[MHz]	[dBuV]	[dB/m]	[dBuV/m]	[dBuV/m]	[dB]	
1	7246.1558	43.16	3.87	47.03	74.00	-26.97	Horizontal
2	7631.4539	43.00	5.18	48.18	74.00	-25.82	Horizontal
3	8310.0388	41.55	6.34	47.89	74.00	-26.11	Horizontal
4	9386.8609	41.93	6.52	48.45	74.00	-25.55	Horizontal
5	15141.8927	39.26	13.24	52.50	74.00	-21.50	Horizontal
6	16780.8476	37.74	16.30	54.04	74.00	-19.96	Horizontal
7	17723.9655	35.75	18.50	54.25	74.00	-19.75	Horizontal
8	17896.4871	35.46	19.23	54.69	74.00	-19.31	Horizontal

AV Result:

No.	Frequency	Reading Level	Correct Factor	Result	Limit	Margin	Remark
	[MHz]	[dBuV]	[dB/m]	[dBuV/m]	[dBuV/m]	[dB]	
1	16780.8476	26.79	16.30	43.09	54.00	-10.91	Horizontal
2	17723.9655	26.33	18.50	44.83	54.00	-9.17	Horizontal
3	17896.4871	26.33	19.23	45.56	54.00	-8.44	Horizontal

- Note: 1. Measurement = Reading Level + Correct Factor,
Correct Factor = Antenna Factor + Loss (Cable + Filter) – Amplifier Gain.
- If Peak Result complies with AV limit, AV Result is deemed to comply with AV limit.
 - Peak detector: RBW: 1 MHz, VBW: 3 MHz.
 - Average detector: RBW: 1 MHz, VBW: 1/T MHz(refer to clause 7.1.).
 - For above 3GHz part, filter losses were only considered in the spurious frequency bands and the authorized band was not corrected for HPF losses.
 - Only the worst case emission was recorded, if it complies with the limit, the other emissions deemed to comply with the limit.

Test Mode	Channel	Polarization	Verdict
11N HT20	LCH	Vertical	PASS



PK Result:

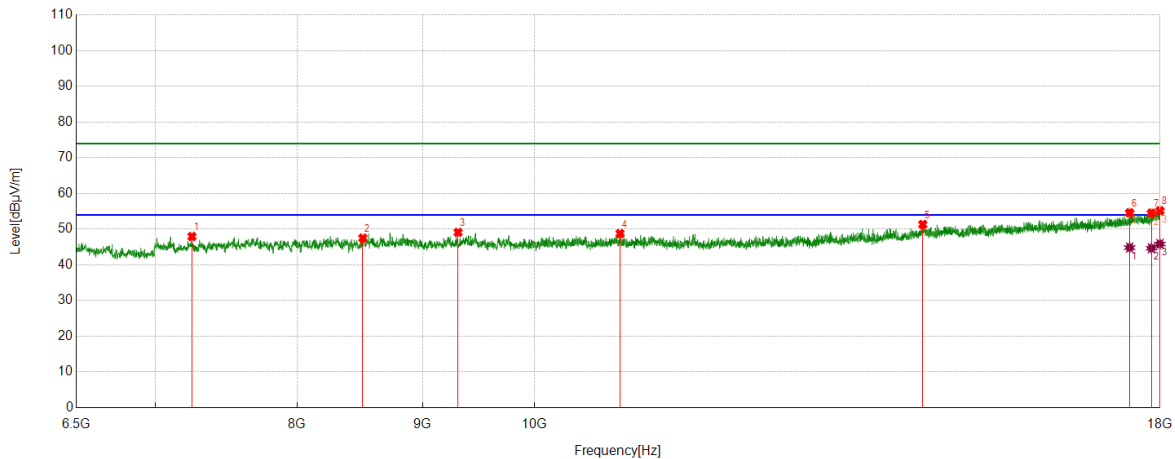
No.	Frequency	Reading Level	Correct Factor	Result	Limit	Margin	Remark
	[MHz]	[dBuV]	[dB/m]	[dBuV/m]	[dBuV/m]	[dB]	
1	7996.6246	44.78	5.39	50.17	74.00	-23.83	Vertical
2	8578.8849	42.82	6.42	49.24	74.00	-24.76	Vertical
3	10791.4739	42.73	6.93	49.66	74.00	-24.34	Vertical
4	13155.0194	40.84	9.81	50.65	74.00	-23.35	Vertical
5	14781.0351	38.20	12.84	51.04	74.00	-22.96	Vertical
6	17597.4497	36.20	18.03	54.23	74.00	-19.77	Vertical
7	17780.0350	36.07	18.79	54.86	74.00	-19.14	Vertical
8	17945.3682	36.81	19.48	56.29	74.00	-17.71	Vertical

AV Result:

No.	Frequency	Reading Level	Correct Factor	Result	Limit	Margin	Remark
	[MHz]	[dBuV]	[dB/m]	[dBuV/m]	[dBuV/m]	[dB]	
1	17597.4497	26.91	18.03	44.94	54.00	-9.06	Vertical
2	17780.0350	25.74	18.79	44.53	54.00	-9.47	Vertical
3	17945.3682	26.28	19.48	45.76	54.00	-8.24	Vertical

- Note: 1. Measurement = Reading Level + Correct Factor,
Correct Factor = Antenna Factor + Loss (Cable + Filter) – Amplifier Gain.
- If Peak Result complies with AV limit, AV Result is deemed to comply with AV limit.
 - Peak detector: RBW: 1 MHz, VBW: 3 MHz.
 - Average detector: RBW: 1 MHz, VBW: 1/T MHz(refer to clause 7.1.).
 - For above 3GHz part, filter losses were only considered in the spurious frequency bands and the authorized band was not corrected for HPF losses.
 - Only the worst case emission was recorded, if it complies with the limit, the other emissions deemed to comply with the limit.

Test Mode	Channel	Polarization	Verdict
11N HT20	MCH	Horizontal	PASS


PK Result:

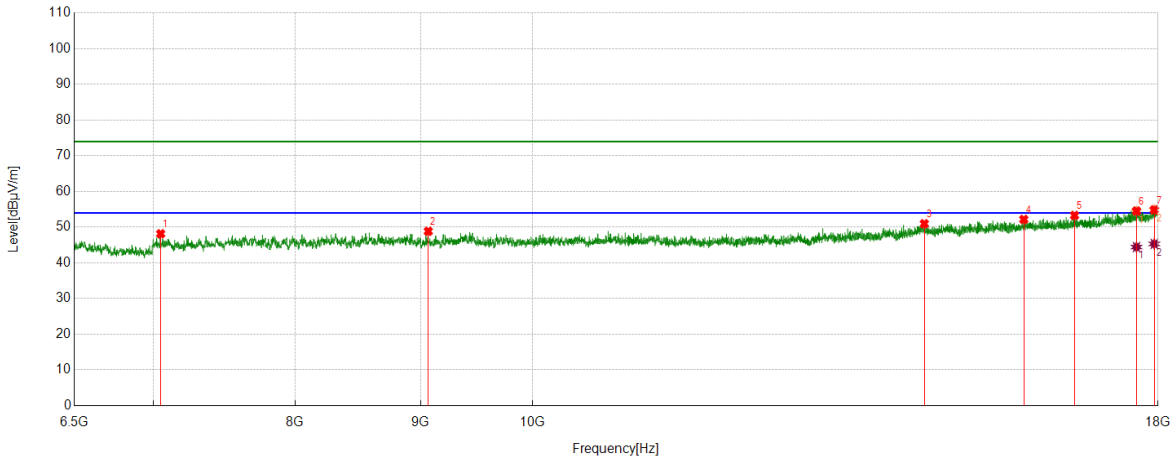
No.	Frequency	Reading Level	Correct Factor	Result	Limit	Margin	Remark
	[MHz]	[dBuV]	[dB/m]	[dBuV/m]	[dBuV/m]	[dB]	
1	7247.5934	44.05	3.90	47.95	74.00	-26.05	Horizontal
2	8509.8762	41.67	5.84	47.51	74.00	-26.49	Horizontal
3	9306.3508	42.88	6.22	49.10	74.00	-24.90	Horizontal
4	10836.042	41.73	7.05	48.78	74.00	-25.22	Horizontal
5	14402.9254	38.55	12.77	51.32	74.00	-22.68	Horizontal
6	17493.9367	36.96	17.63	54.59	74.00	-19.41	Horizontal
7	17854.7943	35.29	19.20	54.49	74.00	-19.51	Horizontal
8	17998.5623	35.41	19.75	55.16	74.00	-18.84	Horizontal

AV Result:

No.	Frequency	Reading Level	Correct Factor	Result	Limit	Margin	Remark
	[MHz]	[dBuV]	[dB/m]	[dBuV/m]	[dBuV/m]	[dB]	
1	17493.9367	27.21	17.63	44.84	54.00	-9.16	Horizontal
2	17854.7943	25.45	19.20	44.65	54.00	-9.35	Horizontal
3	17998.5623	26.10	19.75	45.85	54.00	-8.15	Horizontal

- Note: 1. Measurement = Reading Level + Correct Factor,
 Correct Factor = Antenna Factor + Loss (Cable + Filter) – Amplifier Gain.
- If Peak Result complies with AV limit, AV Result is deemed to comply with AV limit.
 - Peak detector: RBW: 1 MHz, VBW: 3 MHz.
 - Average detector: RBW: 1 MHz, VBW: 1/T MHz(refer to clause 7.1.).
 - For above 3GHz part, filter losses were only considered in the spurious frequency bands and the authorized band was not corrected for HPF losses.
 - Only the worst case emission was recorded, if it complies with the limit, the other emissions deemed to comply with the limit.

Test Mode	Channel	Polarization	Verdict
11N HT20	MCH	Vertical	PASS



PK Result:

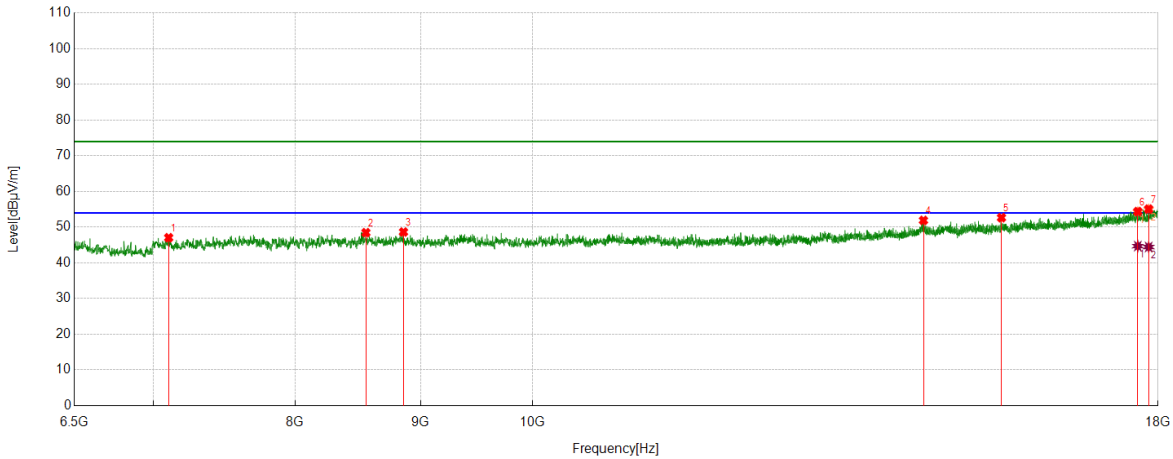
No.	Frequency	Reading Level	Correct Factor	Result	Limit	Margin	Remark
	[MHz]	[dBuV]	[dB/m]	[dBuV/m]	[dBuV/m]	[dB]	
1	7050.6313	44.36	3.79	48.15	74.00	-25.85	Vertical
2	9066.2583	42.75	6.10	48.85	74.00	-25.15	Vertical
3	14450.3688	38.04	12.93	50.97	74.00	-23.03	Vertical
4	15866.4833	37.50	14.67	52.17	74.00	-21.83	Vertical
5	16641.3927	37.45	15.84	53.29	74.00	-20.71	Vertical
6	17639.1424	36.52	18.01	54.53	74.00	-19.47	Vertical
7	17936.7421	35.44	19.42	54.86	74.00	-19.14	Vertical

AV Result:

No.	Frequency	Reading Level	Correct Factor	Result	Limit	Margin	Remark
	[MHz]	[dBuV]	[dB/m]	[dBuV/m]	[dBuV/m]	[dB]	
1	17639.1424	26.42	18.01	44.43	54.00	-9.57	Vertical
2	17936.7421	25.89	19.42	45.31	54.00	-8.69	Vertical

- Note: 1. Measurement = Reading Level + Correct Factor,
Correct Factor = Antenna Factor + Loss (Cable + Filter) – Amplifier Gain.
- If Peak Result complies with AV limit, AV Result is deemed to comply with AV limit.
 - Peak detector: RBW: 1 MHz, VBW: 3 MHz.
 - Average detector: RBW: 1 MHz, VBW: 1/T MHz(refer to clause 7.1.).
 - For above 3GHz part, filter losses were only considered in the spurious frequency bands and the authorized band was not corrected for HPF losses.
 - Only the worst case emission was recorded, if it complies with the limit, the other emissions deemed to comply with the limit.

Test Mode	Channel	Polarization	Verdict
11N HT20	HCH	Horizontal	PASS



PK Result:

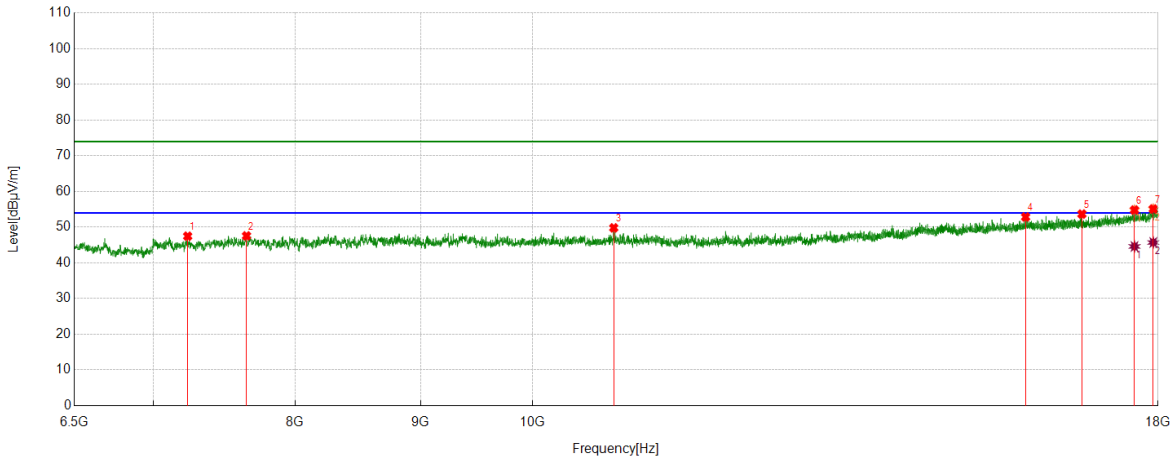
No.	Frequency	Reading Level	Correct Factor	Result	Limit	Margin	Remark
	[MHz]	[dBuV]	[dB/m]	[dBuV/m]	[dBuV/m]	[dB]	
1	7103.8255	43.15	3.90	47.05	74.00	-26.95	Horizontal
2	8550.1313	41.96	6.51	48.47	74.00	-25.53	Horizontal
3	8857.7947	42.48	6.17	48.65	74.00	-25.35	Horizontal
4	14438.8674	39.03	12.87	51.90	74.00	-22.10	Horizontal
5	15537.2547	38.85	13.81	52.66	74.00	-21.34	Horizontal
6	17660.7076	36.31	18.07	54.38	74.00	-19.62	Horizontal
7	17841.8552	35.97	19.10	55.07	74.00	-18.93	Horizontal

AV Result:

No.	Frequency	Reading Level	Correct Factor	Result	Limit	Margin	Remark
	[MHz]	[dBuV]	[dB/m]	[dBuV/m]	[dBuV/m]	[dB]	
1	17660.7076	26.63	18.07	44.70	54.00	-9.30	Horizontal
2	17841.8552	25.35	19.10	44.45	54.00	-9.55	Horizontal

- Note: 1. Measurement = Reading Level + Correct Factor,
Correct Factor = Antenna Factor + Loss (Cable + Filter) – Amplifier Gain.
- If Peak Result complies with AV limit, AV Result is deemed to comply with AV limit.
 - Peak detector: RBW: 1 MHz, VBW: 3 MHz.
 - Average detector: RBW: 1 MHz, VBW: 1/T MHz(refer to clause 7.1.).
 - For above 3GHz part, filter losses were only considered in the spurious frequency bands and the authorized band was not corrected for HPF losses.
 - Only the worst case emission was recorded, if it complies with the limit, the other emissions deemed to comply with the limit.

Test Mode	Channel	Polarization	Verdict
11N HT20	HCH	Vertical	PASS



PK Result:

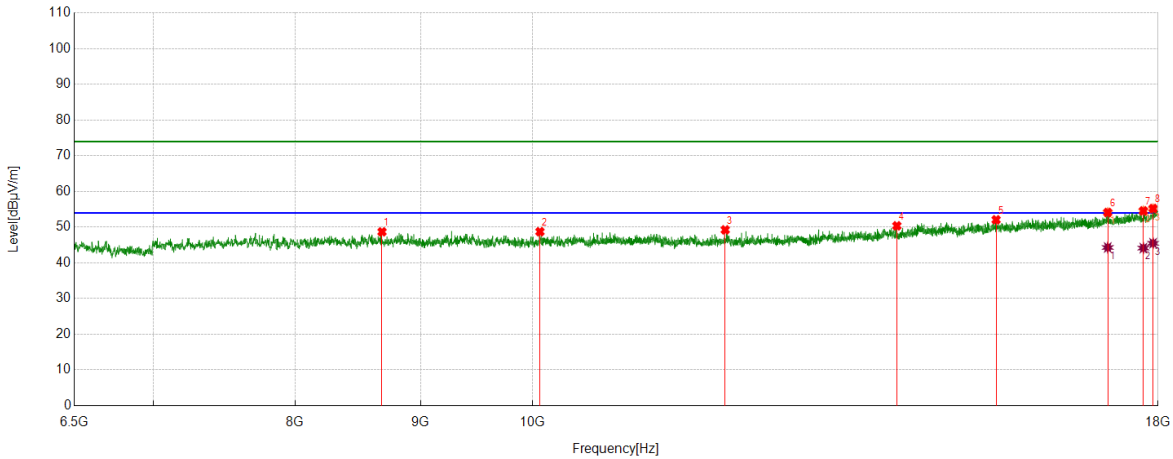
No.	Frequency	Reading Level	Correct Factor	Result	Limit	Margin	Remark
	[MHz]	[dBuV]	[dB/m]	[dBuV/m]	[dBuV/m]	[dB]	
1	7231.7790	43.59	3.89	47.48	74.00	-26.52	Vertical
2	7642.9554	42.32	5.24	47.56	74.00	-26.44	Vertical
3	10792.9116	42.87	6.94	49.81	74.00	-24.19	Vertical
4	15893.7992	38.27	14.58	52.85	74.00	-21.15	Vertical
5	16757.8447	37.54	16.14	53.68	74.00	-20.32	Vertical
6	17606.0758	36.76	18.05	54.81	74.00	-19.19	Vertical
7	17919.4899	35.75	19.36	55.11	74.00	-18.89	Vertical

AV Result:

No.	Frequency	Reading Level	Correct Factor	Result	Limit	Margin	Remark
	[MHz]	[dBuV]	[dB/m]	[dBuV/m]	[dBuV/m]	[dB]	
1	17606.0758	26.55	18.05	44.60	54.00	-9.40	Vertical
2	17919.4899	26.35	19.36	45.71	54.00	-8.29	Vertical

- Note: 1. Measurement = Reading Level + Correct Factor,
Correct Factor = Antenna Factor + Loss (Cable + Filter) – Amplifier Gain.
- If Peak Result complies with AV limit, AV Result is deemed to comply with AV limit.
 - Peak detector: RBW: 1 MHz, VBW: 3 MHz.
 - Average detector: RBW: 1 MHz, VBW: 1/T MHz(refer to clause 7.1.).
 - For above 3GHz part, filter losses were only considered in the spurious frequency bands and the authorized band was not corrected for HPF losses.
 - Only the worst case emission was recorded, if it complies with the limit, the other emissions deemed to comply with the limit.

Test Mode	Channel	Polarization	Verdict
11N HT40	LCH	Horizontal	PASS



PK Result:

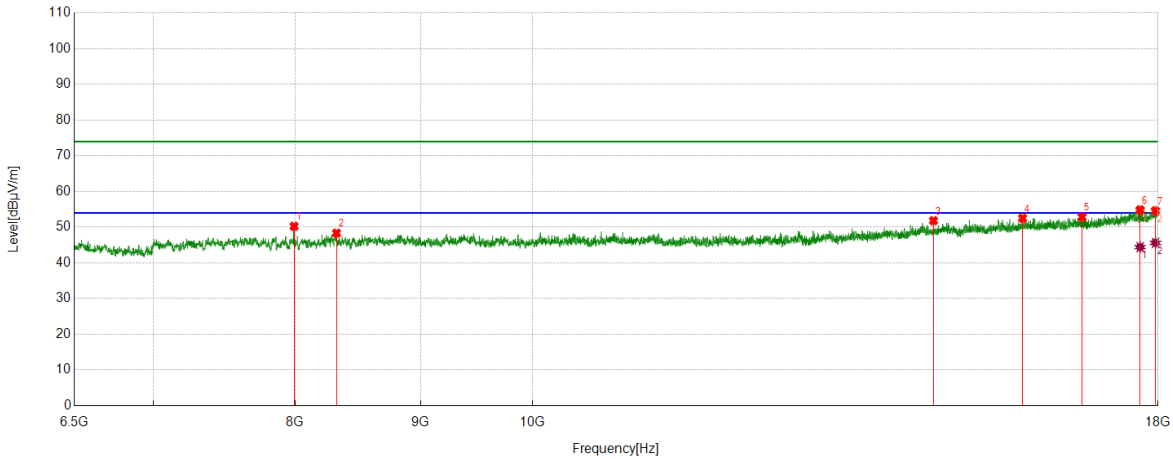
No.	Frequency	Reading Level	Correct Factor	Result	Limit	Margin	Remark
	[MHz]	[dBuV]	[dB/m]	[dBuV/m]	[dBuV/m]	[dB]	
1	8680.9601	42.56	6.14	48.70	74.00	-25.30	Horizontal
2	10069.7587	42.17	6.57	48.74	74.00	-25.26	Horizontal
3	11984.7481	41.14	8.11	49.25	74.00	-24.75	Horizontal
4	14082.3228	38.22	12.16	50.38	74.00	-23.62	Horizontal
5	15459.6200	38.11	13.96	52.07	74.00	-21.93	Horizontal
6	17169.0211	37.66	16.46	54.12	74.00	-19.88	Horizontal
7	17754.1568	36.01	18.56	54.57	74.00	-19.43	Horizontal
8	17916.6146	35.92	19.32	55.24	74.00	-18.76	Horizontal

AV Result:

No.	Frequency	Reading Level	Correct Factor	Result	Limit	Margin	Remark
	[MHz]	[dBuV]	[dB/m]	[dBuV/m]	[dBuV/m]	[dB]	
1	17169.0211	27.85	16.46	44.31	54.00	-9.69	Horizontal
2	17754.1568	25.58	18.56	44.14	54.00	-9.86	Horizontal
	17916.6146	26.19	19.32	45.51	54.00	-8.49	Horizontal

- Note: 1. Measurement = Reading Level + Correct Factor,
Correct Factor = Antenna Factor + Loss (Cable + Filter) – Amplifier Gain.
- If Peak Result complies with AV limit, AV Result is deemed to comply with AV limit.
 - Peak detector: RBW: 1 MHz, VBW: 3 MHz.
 - Average detector: RBW: 1 MHz, VBW: 1/T MHz(refer to clause 7.1.).
 - For above 3GHz part, filter losses were only considered in the spurious frequency bands and the authorized band was not corrected for HPF losses.
 - Only the worst case emission was recorded, if it complies with the limit, the other emissions deemed to comply with the limit.

Test Mode	Channel	Polarization	Verdict
11N HT40	LCH	Vertical	PASS



PK Result:

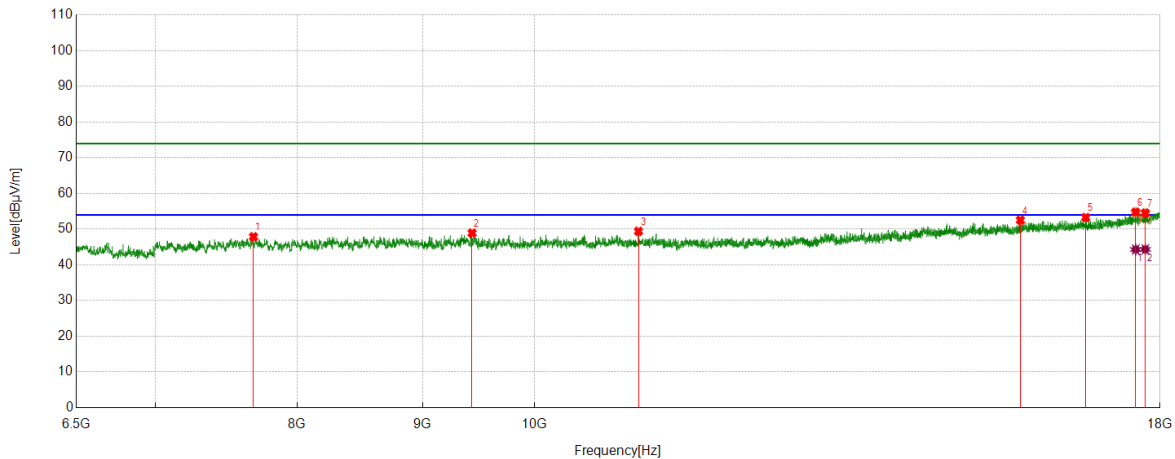
No.	Frequency	Reading Level	Correct Factor	Result	Limit	Margin	Remark
	[MHz]	[dBuV]	[dB/m]	[dBuV/m]	[dBuV/m]	[dB]	
1	7992.3115	44.72	5.53	50.25	74.00	-23.75	Vertical
2	8317.2272	42.33	6.01	48.34	74.00	-25.66	Vertical
3	14575.4469	39.12	12.71	51.83	74.00	-22.17	Vertical
4	15847.7935	37.75	14.78	52.53	74.00	-21.47	Vertical
5	16759.2824	36.77	16.09	52.86	74.00	-21.14	Vertical
6	17699.5249	36.56	18.27	54.83	74.00	-19.17	Vertical
7	17956.8696	35.00	19.59	54.59	74.00	-19.41	Vertical

AV Result:

No.	Frequency	Reading Level	Correct Factor	Result	Limit	Margin	Remark
	[MHz]	[dBuV]	[dB/m]	[dBuV/m]	[dBuV/m]	[dB]	
1	17699.5249	26.14	18.27	44.41	54.00	-9.59	Vertical
2	17956.8696	26.02	19.59	45.61	54.00	-8.39	Vertical

- Note: 1. Measurement = Reading Level + Correct Factor,
Correct Factor = Antenna Factor + Loss (Cable + Filter) – Amplifier Gain.
- If Peak Result complies with AV limit, AV Result is deemed to comply with AV limit.
 - Peak detector: RBW: 1 MHz, VBW: 3 MHz.
 - Average detector: RBW: 1 MHz, VBW: 1/T MHz(refer to clause 7.1.).
 - For above 3GHz part, filter losses were only considered in the spurious frequency bands and the authorized band was not corrected for HPF losses.
 - Only the worst case emission was recorded, if it complies with the limit, the other emissions deemed to comply with the limit.

Test Mode	Channel	Polarization	Verdict
11N HT40	MCH	Horizontal	PASS



PK Result:

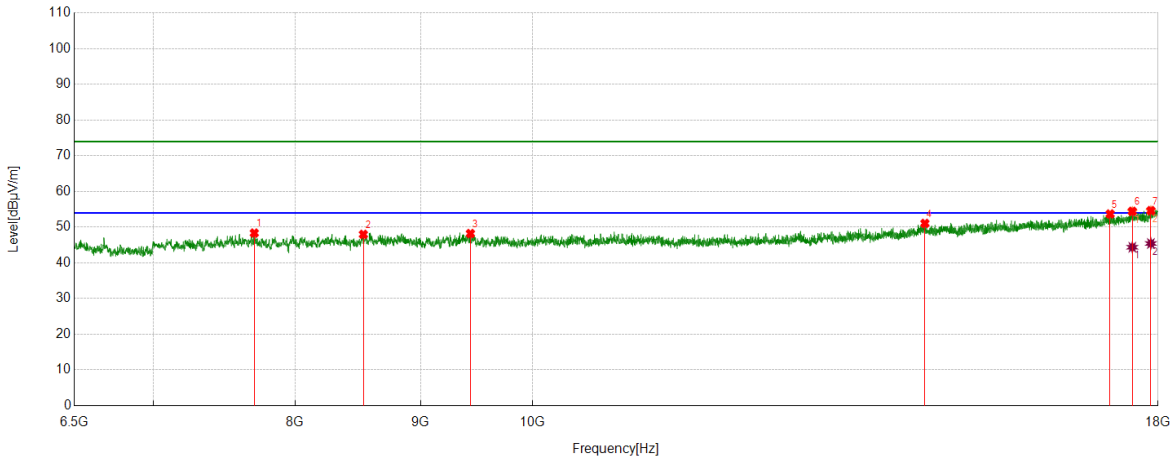
No.	Frequency	Reading Level	Correct Factor	Result	Limit	Margin	Remark
	[MHz]	[dBuV]	[dB/m]	[dBuV/m]	[dBuV/m]	[dB]	
1	7678.8974	42.55	5.33	47.88	74.00	-26.12	Horizontal
2	9429.9912	42.31	6.59	48.90	74.00	-25.10	Horizontal
3	11025.8157	42.16	7.24	49.40	74.00	-24.60	Horizontal
4	15785.9732	38.26	14.28	52.54	74.00	-21.46	Horizontal
5	16786.5983	37.14	16.13	53.27	74.00	-20.73	Horizontal
6	17593.1366	36.73	18.04	54.77	74.00	-19.23	Horizontal
7	17752.7191	35.95	18.58	54.53	74.00	-19.47	Horizontal

AV Result:

No.	Frequency	Reading Level	Correct Factor	Result	Limit	Margin	Remark
	[MHz]	[dBuV]	[dB/m]	[dBuV/m]	[dBuV/m]	[dB]	
1	17593.1366	26.26	18.04	44.30	54.00	-9.70	Horizontal
2	17752.7191	25.77	18.58	44.35	54.00	-9.65	Horizontal

- Note: 1. Measurement = Reading Level + Correct Factor,
Correct Factor = Antenna Factor + Loss (Cable + Filter) – Amplifier Gain.
- If Peak Result complies with AV limit, AV Result is deemed to comply with AV limit.
 - Peak detector: RBW: 1 MHz, VBW: 3 MHz.
 - Average detector: RBW: 1 MHz, VBW: 1/T MHz(refer to clause 7.1.).
 - For above 3GHz part, filter losses were only considered in the spurious frequency bands and the authorized band was not corrected for HPF losses.
 - Only the worst case emission was recorded, if it complies with the limit, the other emissions deemed to comply with the limit.

Test Mode	Channel	Polarization	Verdict
11N HT40	MCH	Vertical	PASS



PK Result:

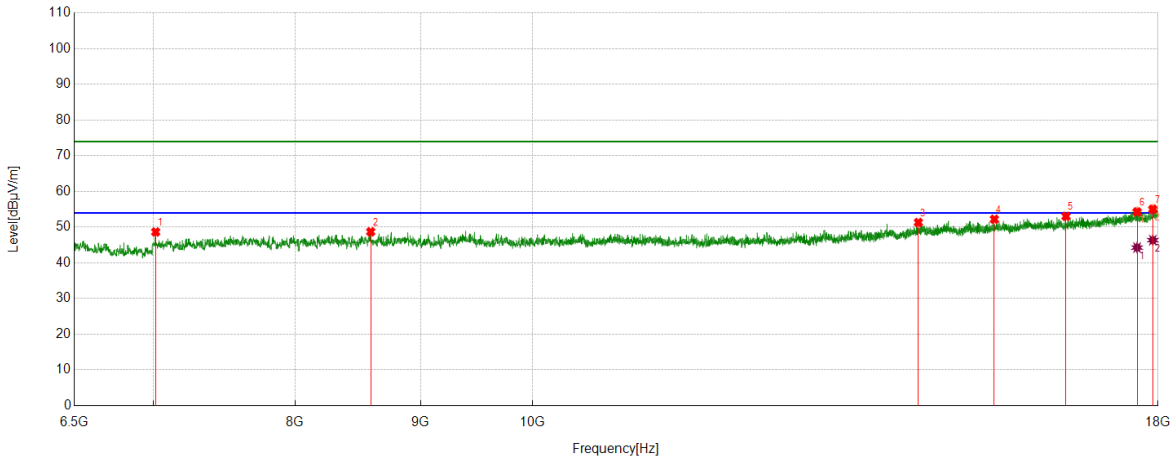
No.	Frequency	Reading Level	Correct Factor	Result	Limit	Margin	Remark
	[MHz]	[dBuV]	[dB/m]	[dBuV/m]	[dBuV/m]	[dB]	
1	7699.0249	42.78	5.57	48.35	74.00	-25.65	Vertical
2	8530.0038	41.96	6.02	47.98	74.00	-26.02	Vertical
3	9432.8666	41.61	6.60	48.21	74.00	-25.79	Vertical
4	14458.9949	38.23	12.83	51.06	74.00	-22.94	Vertical
5	17207.8385	36.96	16.74	53.70	74.00	-20.30	Vertical
6	17570.1338	36.53	17.90	54.43	74.00	-19.57	Vertical
7	17879.2349	35.45	19.18	54.63	74.00	-19.37	Vertical

AV Result:

No.	Frequency	Reading Level	Correct Factor	Result	Limit	Margin	Remark
	[MHz]	[dBuV]	[dB/m]	[dBuV/m]	[dBuV/m]	[dB]	
1	17570.1338	26.48	17.90	44.38	54.00	-9.62	Vertical
2	17879.2349	26.25	19.18	45.43	54.00	-8.57	Vertical

- Note: 1. Measurement = Reading Level + Correct Factor,
Correct Factor = Antenna Factor + Loss (Cable + Filter) – Amplifier Gain.
- If Peak Result complies with AV limit, AV Result is deemed to comply with AV limit.
 - Peak detector: RBW: 1 MHz, VBW: 3 MHz.
 - Average detector: RBW: 1 MHz, VBW: 1/T MHz(refer to clause 7.1.).
 - For above 3GHz part, filter losses were only considered in the spurious frequency bands and the authorized band was not corrected for HPF losses.
 - Only the worst case emission was recorded, if it complies with the limit, the other emissions deemed to comply with the limit.

Test Mode	Channel	Polarization	Verdict
11N HT40	HCH	Horizontal	PASS



PK Result:

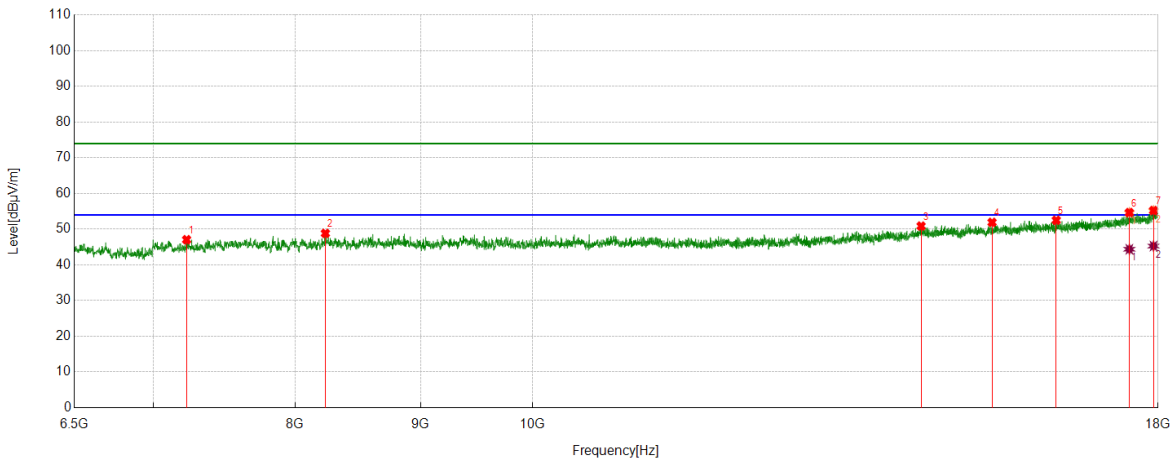
No.	Frequency	Reading Level	Correct Factor	Result	Limit	Margin	Remark
	[MHz]	[dBuV]	[dB/m]	[dBuV/m]	[dBuV/m]	[dB]	
1	7017.5647	44.94	3.72	48.66	74.00	-25.34	Horizontal
2	8588.9486	42.76	5.96	48.72	74.00	-25.28	Horizontal
3	14369.8587	38.67	12.65	51.32	74.00	-22.68	Horizontal
4	15433.7417	38.39	13.83	52.22	74.00	-21.78	Horizontal
5	16509.1261	37.11	15.94	53.05	74.00	-20.95	Horizontal
6	17649.2062	36.25	18.03	54.28	74.00	-19.72	Horizontal
7	17912.3015	35.77	19.28	55.05	74.00	-18.95	Horizontal

AV Result:

No.	Frequency	Reading Level	Correct Factor	Result	Limit	Margin	Remark
	[MHz]	[dBuV]	[dB/m]	[dBuV/m]	[dBuV/m]	[dB]	
1	17649.2062	26.26	18.03	44.29	54.00	-9.71	Horizontal
2	17912.3015	27.08	19.28	46.36	54.00	-7.64	Horizontal

- Note: 1. Measurement = Reading Level + Correct Factor,
Correct Factor = Antenna Factor + Loss (Cable + Filter) – Amplifier Gain.
- If Peak Result complies with AV limit, AV Result is deemed to comply with AV limit.
 - Peak detector: RBW: 1 MHz, VBW: 3 MHz.
 - Average detector: RBW: 1 MHz, VBW: 1/T MHz(refer to clause 7.1.).
 - For above 3GHz part, filter losses were only considered in the spurious frequency bands and the authorized band was not corrected for HPF losses.
 - Only the worst case emission was recorded, if it complies with the limit, the other emissions deemed to comply with the limit.

Test Mode	Channel	Polarization	Verdict
11N HT40	HCH	Vertical	PASS



PK Result:

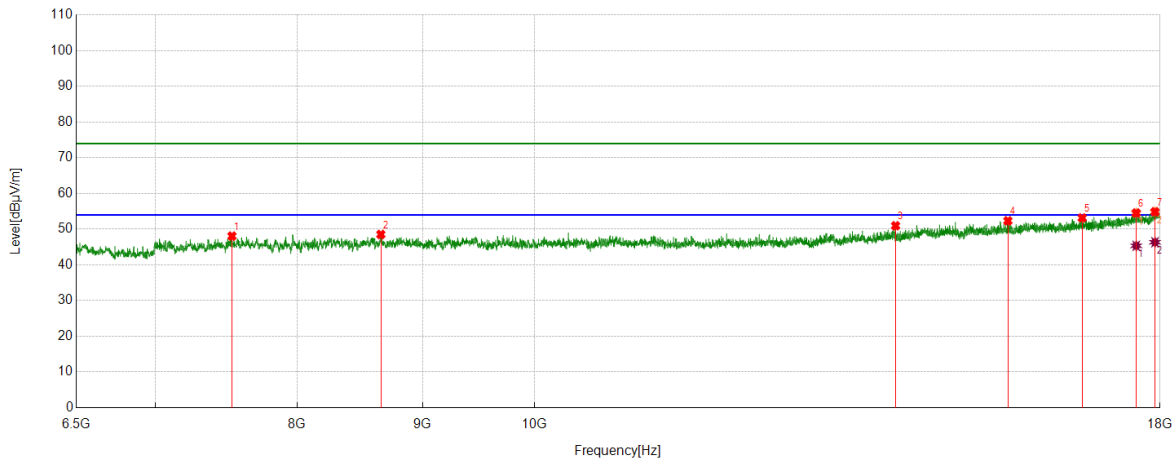
No.	Frequency	Reading Level	Correct Factor	Result	Limit	Margin	Remark
	[MHz]	[dBuV]	[dB/m]	[dBuV/m]	[dBuV/m]	[dB]	
1	7224.5906	43.24	3.81	47.05	74.00	-26.95	Vertical
2	8230.9664	42.77	6.06	48.83	74.00	-25.17	Vertical
3	14407.2384	38.02	12.85	50.87	74.00	-23.13	Vertical
4	15400.6751	38.23	13.67	51.90	74.00	-22.10	Vertical
5	16358.1698	37.48	15.02	52.50	74.00	-21.50	Vertical
6	17521.2527	37.04	17.61	54.65	74.00	-19.35	Vertical
7	17923.8030	35.87	19.36	55.23	74.00	-18.77	Vertical

AV Result:

No.	Frequency	Reading Level	Correct Factor	Result	Limit	Margin	Remark
	[MHz]	[dBuV]	[dB/m]	[dBuV/m]	[dBuV/m]	[dB]	
1	17521.2527	26.77	17.61	44.38	54.00	-9.62	Vertical
2	17923.8030	25.91	19.36	45.27	54.00	-8.73	Vertical

- Note: 1. Measurement = Reading Level + Correct Factor,
Correct Factor = Antenna Factor + Loss (Cable + Filter) – Amplifier Gain.
- If Peak Result complies with AV limit, AV Result is deemed to comply with AV limit.
 - Peak detector: RBW: 1 MHz, VBW: 3 MHz.
 - Average detector: RBW: 1 MHz, VBW: 1/T MHz(refer to clause 7.1.).
 - For above 3GHz part, filter losses were only considered in the spurious frequency bands and the authorized band was not corrected for HPF losses.
 - Only the worst case emission was recorded, if it complies with the limit, the other emissions deemed to comply with the limit.

Test Mode	Channel	Polarization	Verdict
11AX HE20	LCH	Horizontal	PASS



PK Result:

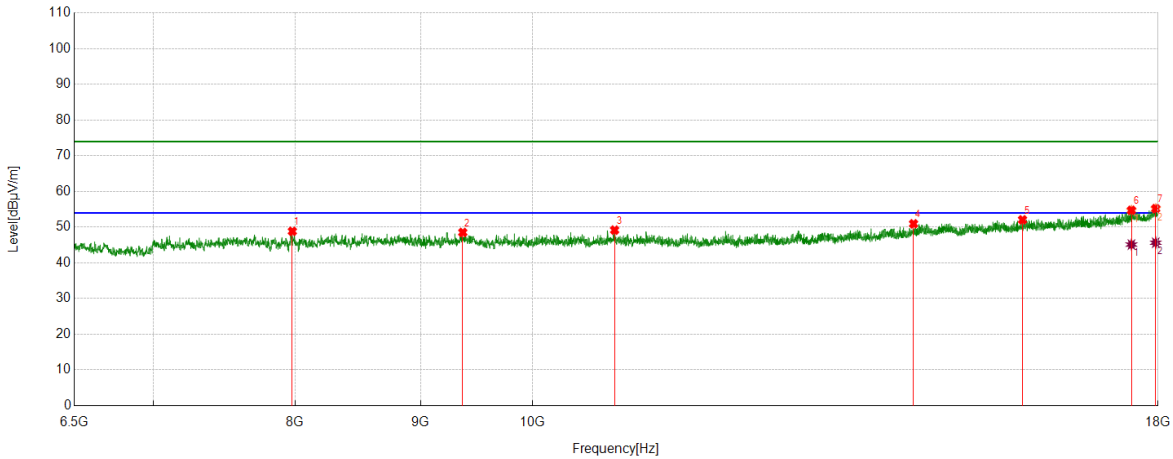
No.	Frequency	Reading Level	Correct Factor	Result	Limit	Margin	Remark
	[MHz]	[dBuV]	[dB/m]	[dBuV/m]	[dBuV/m]	[dB]	
1	7525.0656	43.60	4.47	48.07	74.00	-25.93	Horizontal
2	8655.0819	42.25	6.28	48.53	74.00	-25.47	Horizontal
3	14039.1924	39.06	11.90	50.96	74.00	-23.04	Horizontal
4	15601.9502	38.67	13.67	52.34	74.00	-21.66	Horizontal
5	16730.5288	37.02	16.14	53.16	74.00	-20.84	Horizontal
6	17601.7627	36.51	18.03	54.54	74.00	-19.46	Horizontal
7	17915.1769	35.58	19.31	54.89	74.00	-19.11	Horizontal

AV Result:

No.	Frequency	Reading Level	Correct Factor	Result	Limit	Margin	Remark
	[MHz]	[dBuV]	[dB/m]	[dBuV/m]	[dBuV/m]	[dB]	
1	17601.7627	27.31	18.03	45.34	54.00	-8.66	Horizontal
2	17915.1769	27.03	19.31	46.34	54.00	-7.66	Horizontal

- Note: 1. Measurement = Reading Level + Correct Factor,
Correct Factor = Antenna Factor + Loss (Cable + Filter) – Amplifier Gain.
- If Peak Result complies with AV limit, AV Result is deemed to comply with AV limit.
 - Peak detector: RBW: 1 MHz, VBW: 3 MHz.
 - Average detector: RBW: 1 MHz, VBW: 1/T MHz(refer to clause 7.1.).
 - For above 3GHz part, filter losses were only considered in the spurious frequency bands and the authorized band was not corrected for HPF losses.
 - Only the worst case emission was recorded, if it complies with the limit, the other emissions deemed to comply with the limit.

Test Mode	Channel	Polarization	Verdict
11AX HE20	LCH	Vertical	PASS



PK Result:

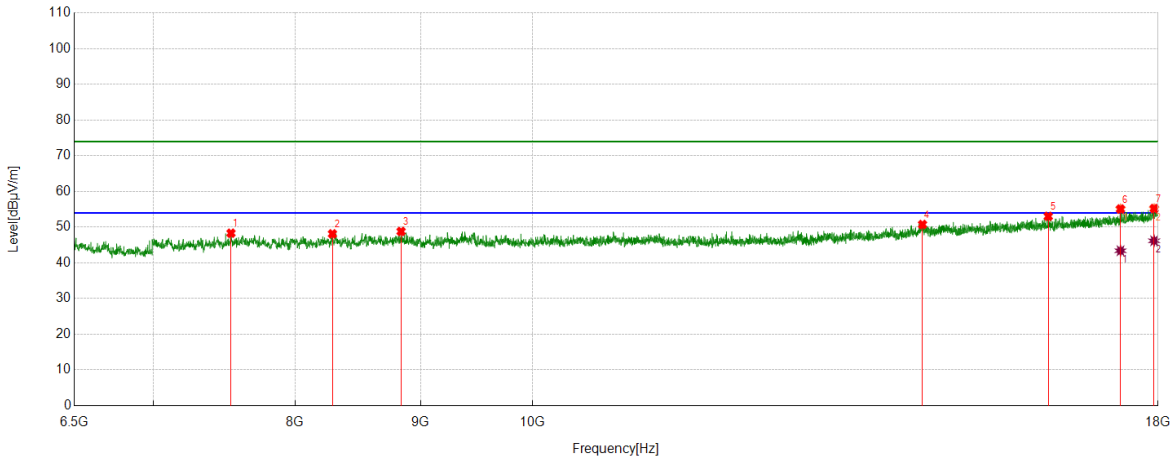
No.	Frequency	Reading Level	Correct Factor	Result	Limit	Margin	Remark
	[MHz]	[dBuV]	[dB/m]	[dBuV/m]	[dBuV/m]	[dB]	
1	7979.3724	43.49	5.36	48.85	74.00	-25.15	Vertical
2	9365.2957	42.05	6.47	48.52	74.00	-25.48	Vertical
3	10801.5377	42.17	7.01	49.18	74.00	-24.82	Vertical
4	14305.1631	38.64	12.31	50.95	74.00	-23.05	Vertical
5	15847.7935	37.29	14.78	52.07	74.00	-21.93	Vertical
6	17555.7570	36.96	17.77	54.73	74.00	-19.27	Vertical
7	17961.1826	35.58	19.63	55.21	74.00	-18.79	Vertical

AV Result:

No.	Frequency	Reading Level	Correct Factor	Result	Limit	Margin	Remark
	[MHz]	[dBuV]	[dB/m]	[dBuV/m]	[dBuV/m]	[dB]	
1	17555.7570	27.36	17.77	45.13	54.00	-8.87	Vertical
2	17961.1826	26.02	19.63	45.65	54.00	-8.35	Vertical

- Note: 1. Measurement = Reading Level + Correct Factor,
Correct Factor = Antenna Factor + Loss (Cable + Filter) – Amplifier Gain.
- If Peak Result complies with AV limit, AV Result is deemed to comply with AV limit.
 - Peak detector: RBW: 1 MHz, VBW: 3 MHz.
 - Average detector: RBW: 1 MHz, VBW: 1/T MHz(refer to clause 7.1.).
 - For above 3GHz part, filter losses were only considered in the spurious frequency bands and the authorized band was not corrected for HPF losses.
 - Only the worst case emission was recorded, if it complies with the limit, the other emissions deemed to comply with the limit.

Test Mode	Channel	Polarization	Verdict
11AX HE20	MCH	Horizontal	PASS



PK Result:

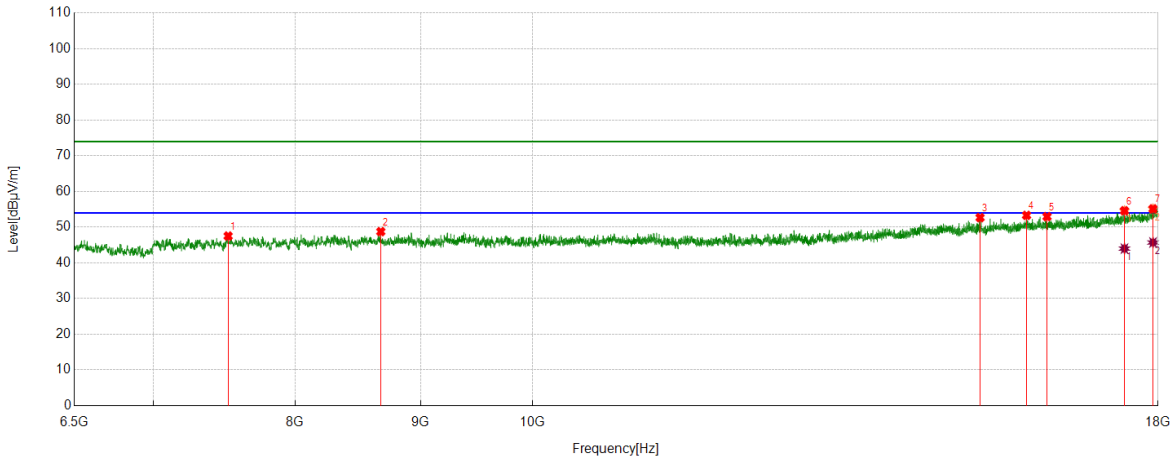
No.	Frequency	Reading Level	Correct Factor	Result	Limit	Margin	Remark
	[MHz]	[dBuV]	[dB/m]	[dBuV/m]	[dBuV/m]	[dB]	
1	7532.2540	43.92	4.40	48.32	74.00	-25.68	Horizontal
2	8285.5982	41.90	6.23	48.13	74.00	-25.87	Horizontal
3	8837.6672	42.46	6.35	48.81	74.00	-25.19	Horizontal
4	14425.9282	37.86	12.89	50.75	74.00	-23.25	Horizontal
5	16235.9670	37.80	15.23	53.03	74.00	-20.97	Horizontal
6	17376.0470	37.75	17.34	55.09	74.00	-18.91	Horizontal
7	17933.8667	35.83	19.40	55.23	74.00	-18.77	Horizontal

AV Result:

No.	Frequency	Reading Level	Correct Factor	Result	Limit	Margin	Remark
	[MHz]	[dBuV]	[dB/m]	[dBuV/m]	[dBuV/m]	[dB]	
1	17376.0470	26.06	17.34	43.40	54.00	-10.60	Horizontal
2	17933.8667	26.79	19.40	46.19	54.00	-7.81	Horizontal

- Note: 1. Measurement = Reading Level + Correct Factor,
Correct Factor = Antenna Factor + Loss (Cable + Filter) – Amplifier Gain.
- If Peak Result complies with AV limit, AV Result is deemed to comply with AV limit.
 - Peak detector: RBW: 1 MHz, VBW: 3 MHz.
 - Average detector: RBW: 1 MHz, VBW: 1/T MHz(refer to clause 7.1.).
 - For above 3GHz part, filter losses were only considered in the spurious frequency bands and the authorized band was not corrected for HPF losses.
 - Only the worst case emission was recorded, if it complies with the limit, the other emissions deemed to comply with the limit.

Test Mode	Channel	Polarization	Verdict
11AX HE20	MCH	Vertical	PASS



PK Result:

No.	Frequency	Reading Level	Correct Factor	Result	Limit	Margin	Remark
	[MHz]	[dBuV]	[dB/m]	[dBuV/m]	[dBuV/m]	[dB]	
1	7512.1265	43.07	4.45	47.52	74.00	-26.48	Vertical
2	8670.8964	42.73	6.03	48.76	74.00	-25.24	Vertical
3	15228.1535	39.27	13.41	52.68	74.00	-21.32	Vertical
4	15908.1760	38.69	14.62	53.31	74.00	-20.69	Vertical
5	16217.2772	37.59	15.36	52.95	74.00	-21.05	Vertical
6	17440.7426	37.09	17.52	54.61	74.00	-19.39	Vertical
7	17915.1769	35.83	19.31	55.14	74.00	-18.86	Vertical

AV Result:

No.	Frequency	Reading Level	Correct Factor	Result	Limit	Margin	Remark
	[MHz]	[dBuV]	[dB/m]	[dBuV/m]	[dBuV/m]	[dB]	
1	17440.7426	26.48	17.52	44.00	54.00	-10.00	Vertical
2	17915.1769	26.40	19.31	45.71	54.00	-8.29	Vertical

- Note: 1. Measurement = Reading Level + Correct Factor,
Correct Factor = Antenna Factor + Loss (Cable + Filter) – Amplifier Gain.
- If Peak Result complies with AV limit, AV Result is deemed to comply with AV limit.
 - Peak detector: RBW: 1 MHz, VBW: 3 MHz.
 - Average detector: RBW: 1 MHz, VBW: 1/T MHz(refer to clause 7.1.).
 - For above 3GHz part, filter losses were only considered in the spurious frequency bands and the authorized band was not corrected for HPF losses.
 - Only the worst case emission was recorded, if it complies with the limit, the other emissions deemed to comply with the limit.